



Item Checklist

This item checklist is only available for retail market. Completely check your package, If you discover damaged or missing items, contact your retailer.

- XT4500 series mainboard
- QDI Utility CD
- 1HD ribbon cable
- 1 FDD cable
- User's manual
- I/O shield(option)
- USB cable(option)



The information in this document is subject to change in order to improve reliability, design, or function without prior notice and does not represent a commitment on the part of this company. In no event will we be liable for direct, indirect, special, incidental, or consequential damages arising out of the use or the possibility of such damages.

All trademarks are the property of their respective owners.

If you need any further information, please visit our web-site: "www.qdigrp.com".

Certificate of Compliance



The following products have been tested by us with the listed standards and found in compliance with the council EMC directive 89/336/EEC. It is demonstrative for the compliance with this EMC Directive.

Submittor: QDITechnologyLimited
23Floor, Lincoln House, Taikoo Place 979 King's
Road, Quarry Bay, HONG KONG

Product: MotherBoard

M/N: XT4500

- EN 55022/A1:2000 Limits and methods of measurements of radio disturbance characteristics of information technology equipment
- EN 61000-3-2/A14:2000 Electromagnetic compatibility(EMC)
Part 3: Limits
Section 2: Limits for harmonic current emissions (equipment input current \leq 16A per phase)
- EN 61000-3-3/A1:2001 Electromagnetic compatibility(EMC)
Part 3: Limits
Section 3: Limits of voltage fluctuations and flicker in low-voltage supply systems for equipment with rated current \leq 16A
- EN 55024/A1:2001 Information technology equipment-Immunity characteristics limits and methods of measurement

Signature : Wang Dayong | Date : 2004.02.01

Printed Name : Wang Dayong Position: General Manager

The statement is based on a single evaluation of one sample of above mentioned products. It does not imply an assessment of the whole production and does not permit the use of the test lab.logo.

Declaration of conformity



Trade Name: QDI Computer (U . S . A .) Inc.
Model Name: **XT4500**
Responsible Party: QDI Computer (U . S . A .) Inc.
Address: 41456 Christy Street
Fremont, CA 94538
Telephone: (510)668-4933
Facsimile: (510)668-4966

Equipment Classification: FCC Class B Subassembly
Type of Product: Mainboard
Manufacturer: QDI TECHNOLOGY (HK) Inc.
Address: 23Floor, Lincoln House, Taikoo Place
979 King's Road, Quarry Bay, HONG
KONG

Supplementary Information:

This device complies with Part 15 of the FCC Rules. Operation is subject to the following two conditions : (1) this device may not cause harmful interference, and (2) this device must accept any interference received, including interference that may cause undesired operation.

Tested to comply with FCC standards.

Signature : Wang Dayong

Date : 2004

CONTENTS



Chapter 1

Introduction	1
Key Features	2

Chapter 2

Installation Instructions.....	4
External Connectors	5
PS/2 Keyboard /Mouse Connector	5
USB1, USB2 and LAN Connectors(optional)	5
Parallel Port, Serial Port Connectors(optional)	5
Line-in jack, Mic-in jack, Speaker-out jack and MIDI/Joystick Connector	6
6-Channel Audio	6
ATX 12V Power Supply Connectors & Power Switch	7
Hard Disk LED Connector (HD_LED)	7
Reset Switch (RESET)	7
Power LED Connector(PWR_LED)	8
Fan Connectors(CPU_FAN , PWR_FAN)	8
USB3, USB4 Connectors	9
Audio Connectors (CD_IN)	9
Audio Interface(F_AUDIO)	10
SPEAKER Connector	10
Jumper Settings	11
Clear CMOS(CLR_CMOS).....	11

Chapter 3

BIOS Description.....	12
AWDFLASH.EXE	13
AWARD BIOS Description.....	14

Appendix

QDI Utility CD.....	16
Using 4-/6-Channel Audio.....	25
Layout	



Caution

Be sure to unplug the AC power supply before adding or removing expansion cards, RAM or other system peripherals, otherwise your mainboard and RAM might be seriously damaged.



Caution

Be sure to add some Silicone Grease between the CPU and the heatsink to keep them fully contacted to meet the heat sink requirement.



Note:

This manual is suitable for XT4500 series of mainboards. Each mainboard is carefully designed for the PC user who wants different features.

-6A: with 6 channel Audio

-L: with onboard LAN

Chapter 1



Introduction

XT4500 series of mainboards utilize Intel® 845PE + ICH4 chipset, providing a fully compatible, high performance and cost-effective mATX platform. The new integrated technologies, together with AC'97 audio, AGP 4X, 4 USB 2.0 ports and ATA100/66/33, give customers an advanced, multi-media solution at reasonable price. It provides 400/533MHz host bus speed to support new Intel® prescott Pentium 4 and Celeron socket 478 processors and the DDR266/333 memory.

Form factor

- mATX form factor of 244mm x 190mm

Microprocessor

- Supports Intel® Pentium 4 (Willamette) socket 478 processors at 1.4/1.5/1.6/1.7/1.8/1.9/2.0GHz
- Supports Intel® Pentium 4 (Northwood) socket 478 processors at 1.6/1.8/2.0/2.2/2.4/2.6/2.8/3.06GHz
- Supports Prescott socket 478 processors of FSB 533MHz
- Supports 400/533MHz host bus speed

System memory

- Supports DDR266/333 SDRAM
- Supports 64/128/256/512Mb technology up to 2GB
- Provides two 184-pin DDR SDRAM interfaces

Onboard IDE

- Supports Independent timing of up to 4 drives
- Supports Ultra ATA 33/66/100, PIO mode
- Two fast IDE interfaces supporting four IDE devices including IDE hard disks and CD ROM drives

Onboard LAN(optional)

- 10/100 Mbit/sec Ethernet support
- 10/100M LAN interface built-in on board

USB 2.0

- USB 2.0 compliant, operates at 480Mbps, about 40X times faster than USB 1.1 which currently works at a snails pace of just 12Mbps
- Provides 4 USB 2.0 ports

Onboard I/O

- One floppy port supporting up to one 3.5" or 5.25" floppy drives with 360K/720K/1.2M/1.44M/2.88M format
- One high speed 16550 compatible COM with 16 byte send/receive FIFO
- One parallel port supports SPP/EPP/ECP mode
- Supports PS/2 mouse and PS/2 keyboard
- All I/O ports can be enabled/disabled in the BIOS setup

Onboard Audio

- AC'97 2.3 Specification Compliant
- Provides onboard Line-in Jack, Microphone-in Jack and Speaker-out Jack and MIDI/Joystick Connector

6-channel Onboard Audio

- AC'97 2.3 Specification Compliant
- Provides Front left&right, Rear left&right/Line-in Jack and Center&Woofers/Microphone-in Jack, which can be specified by software



Advanced features

- PCI 2.2 Specification Compliant
- Provides Trend ChipAwayVirus On Guard

BIOS

- Licensed advanced AWARD(Phoenix) BIOS, supports flash ROM, plug and play ready
- Supports IDE CDROM/USB boot up.

Green function

- Supports ACPI (Advanced Configuration and Power Interface) and ODPM (OS Directed Power Management)
- Supports ACPI power status: S0 (full-on), S1 (power on suspend), S4(suspend to Disk, depends on OS) and S5 (soft-off)

Main Expansion Slots and Connectors

Slot/Port (Quantity)	Description
PCI(2)	PCI slots
IDE(2)	IDE ports
FLOPPY(1)	Floppy Drive port
DDR(2)	DIMM socket
USB(4)	USB connectors
LAN(1)(optional)	LAN connector
COM(1)	COM connector
PARALLEL(1)	Parallel connector
Audio(1)	Audio connector



Chapter 2



Installation Instructions

This section covers External Connectors and Jumper Settings. Refer to the mainboard layout chart for locations of all jumpers, external connectors, slots and I/O ports. Furthermore, this section lists all necessary connector pin assignments for your reference. The particular state of the jumpers, connectors and ports are illustrated in the following figures. Before setting the jumpers or inserting these connectors, please pay attention to the direction.

External Connectors

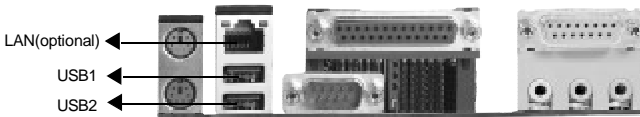
PS/2 Keyboard/Mouse Connector

PS/2 keyboard connector is for the usage of PS/2 keyboard. If using a standard AT size keyboard, an adapter should be used to fit this connector. PS/2 mouse connector is for the usage of PS/2 mouse.



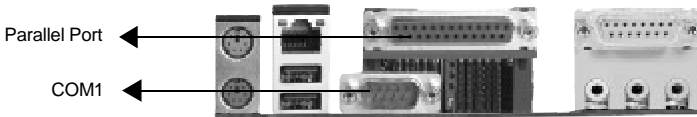
USB1, USB2 and LAN Connectors(optional)

Two USB ports are for connecting USB devices. The RJ-45 connector is for onboard LAN.



Parallel Port, Serial Port Connector (COM1)(optional)

The parallel port connector can be connected to a parallel device such as a printer. The serial port COM1 connector can be connected to a serial port device such as a serial port mouse. You can enable/disable them and choose the IRQ or I/O address in "Integrated Peripherals" from AWARD BIOS SETUP.



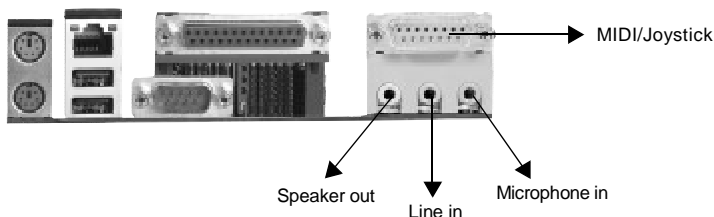
Warning:

Be sure to unplug the AC power supply before adding or removing expansion cards or other system peripherals, otherwise your mainboard and expansion cards might be seriously damaged.



Line-in jack, Microphone-in jack and Speaker-out jack and MIDI/Joystick Connector

The Line-in jack can be connected to devices such as a cassette or minidisc player to playback or record. The Microphone-in jack can be connected to a microphone for voice input. The Speaker-out jack allows you to connect speakers or headphones for audio output from the internal amplifier. The MIDI/Joystick connector allows you to connect a game joystick or a MIDI device.

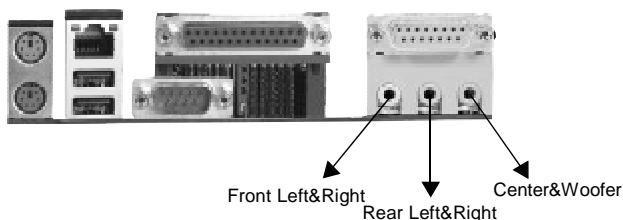


6-Channel Audio

This mainboard utilizes AD1888 chip providing 6-channel Audio, which consists of Front Left, Front Right, Rear Left, Rear Right, Center and Woofer for a complete surround sound effect. When 6-Channel audio is available, the front Left&Right jack can be connected to the Front speakers, the Back Left&Right jack can be connected to the rear speakers and the Center&Woofer jack can be connected to the center speaker and woofer.

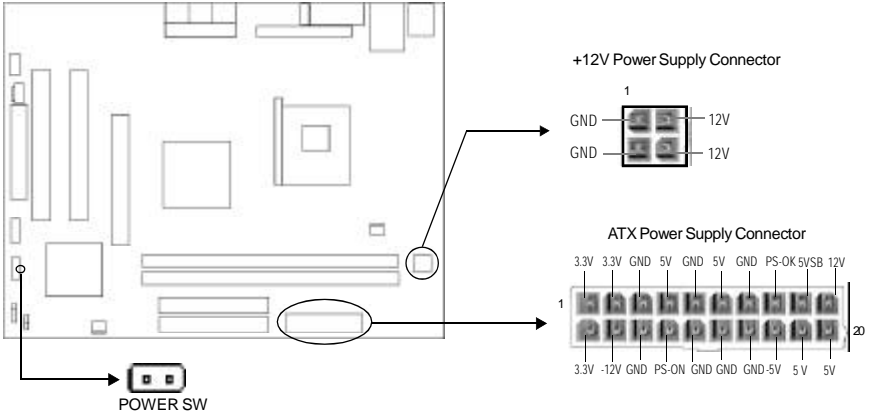
Microphone function is offered by F_AUDIO Connector on the mainboard now.

If set 2-Channel Audio mode on -6A or -6AL mainboard, you can connect two speakers to the Front Left&Right jack, at the same time use the Rear Left&Right jack as Line in jack, and use the Center&Woofer jack as Microphone in jack.



ATX 12V Power Supply Connector & Power Switch (POWER SW)

The power switch (POWER SW) should be connected to a momentary switch. When powering up your system, first turn on the mechanical switch of the power supply (if one is provided), then push once the power switch. When powering off the system, you needn't turn off the mechanical switch, just push once the power switch. XT4500 series mainboard only support ATX12V power.



Note: If you change “Soft-off by PWR-BTTN” from default “Instant-off” to “Delay 4 Sec” in the “POWER MANAGEMENT SETUP” section of the BIOS, the power switch should be pressed for more than 4 seconds before the system powers down.

Hard Disk LED Connector (HDD_LED)

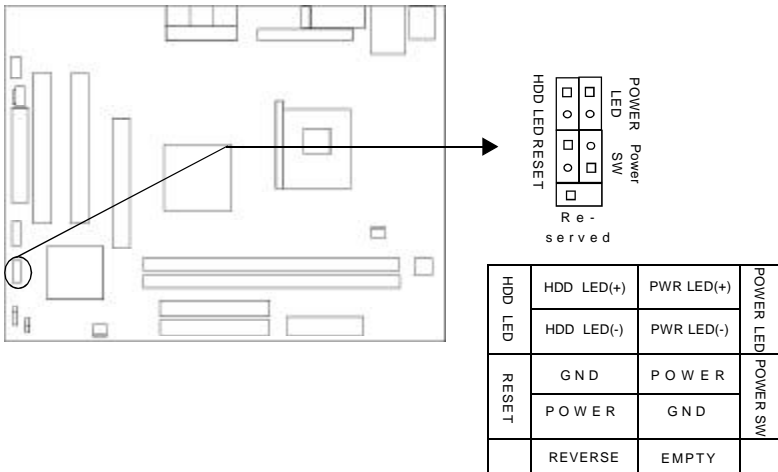
The connector connects to the case's IDE indicator LED indicating the activity status of IDE hard disk. The connector has an orientation. If one way doesn't work, try the other way.

Reset Switch (RESET)

The connector connects to the case's reset switch. Press the switch once, the system resets.

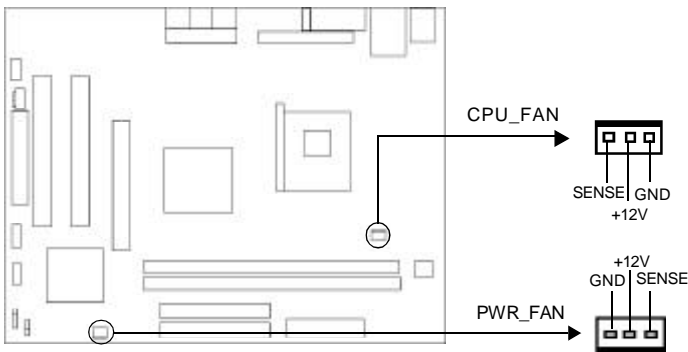
Power LED Connector (PWR_LED)

When the system is in S0 status, the LED is on. When the system is in S1 status, the LED is on; When the system is in S4, S5 status, the LED is off. The connector has an orientation.



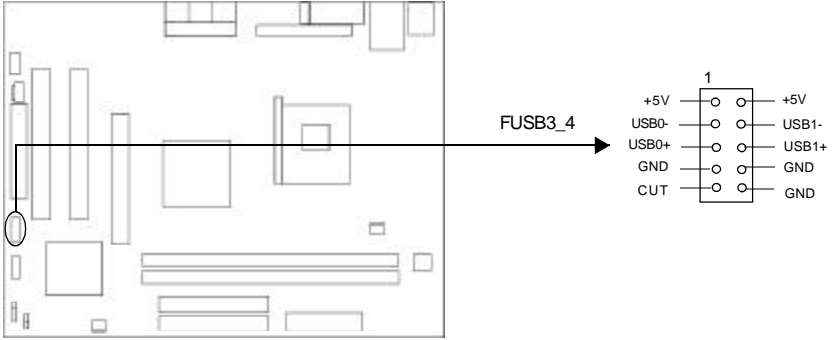
Fan Connectors (CPU_FAN, PWR_FAN)

The fan speed of these fans can be detected and viewed in "PC Health" section of the CMOS SETUP.



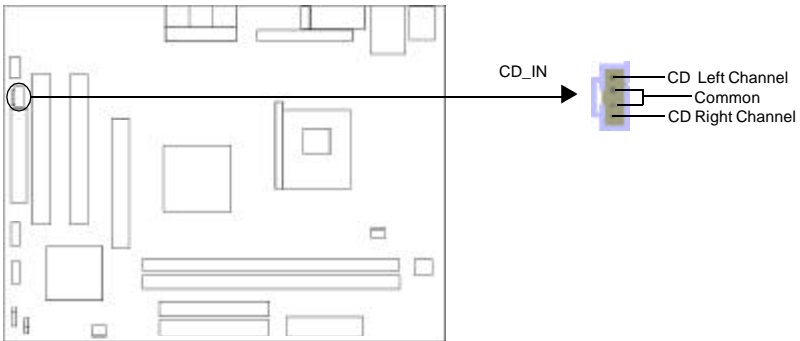
USB3, USB4 Connector(FUSB3_4)

Besides USB1,2 on the back panel, XT4500 series of mainboards also have one 10-pin headers on board which may connect to front panel USB cable(optional) to provide additional two USB ports. .



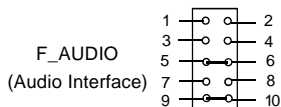
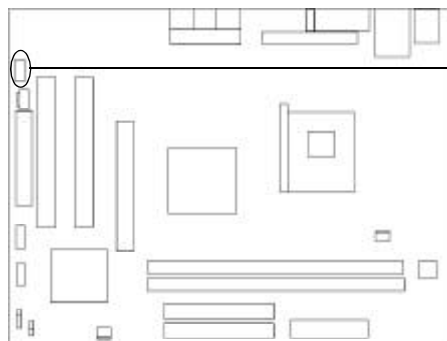
Audio Connector (CD_IN)

CD_IN is Sony standard CD audio connector, it can be connected to a CD-ROM drive through a CD audio cable.



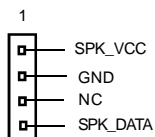
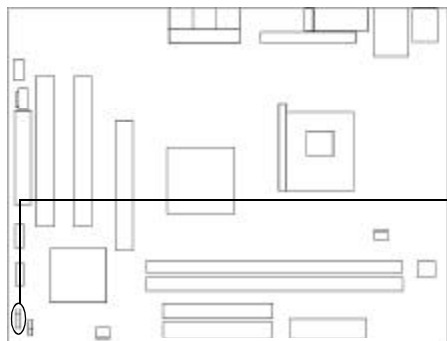
Audio Interface(F_AUDIO)

The audio interface provides two kinds of audio output choices: the FrontAudio and the RearAudio. Their priority level is as sequence. When the FrontAudio is available, the RearAudio(in-case speakers) will be cut off. An onboard amplifier is provided for the earphone. When the FrontAudio is absent, Pin5 and Pin6, Pin9 and Pin10 must be short connected.

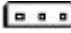






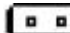

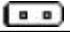
Pin No.	Symbol	Pin No.	Symbol
1	AUD_MIC	2	AUD_GND
3	AUD_MIC_BIAS	4	AUD_VCC
5	AUD_FPOUT_R	6	AUD_RET_R
7	NC	8	(Cut away)
9	AUD_FPOUT_L	10	AUD_RET_L

SPEAKER Connector



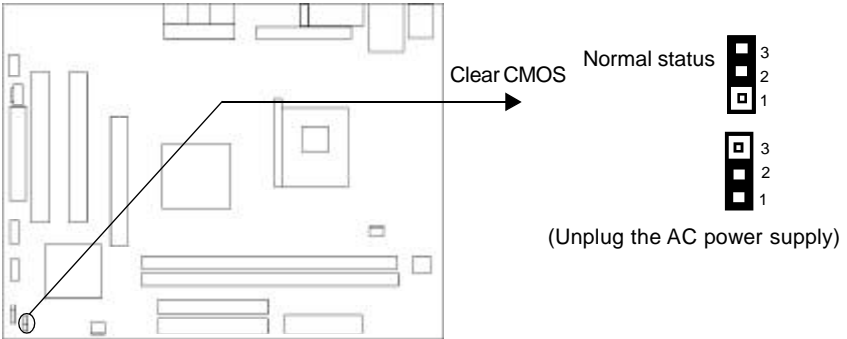
Jumper Settings

Jumpers are located on the mainboard, the clear CMOS jumper CLR_CMOS, etc. Pin 1 for all jumpers are located on the side with a thick white line (Pin1→ ), referring to the mainboard's silkscreen. Jumpers with three pins will be shown as  to represent pin1 & pin2 ("1-2") closed and  to represent pin2 & pin3 ("2-3") closed.

Jumper	Symbol	Description	Represent
		1-2	set pin1 and pin2 closed
		2-3	set pin2 and pin3 closed
		close	set the pins closed
		open	set the pins opened

Clear CMOS (CLR_CMOS)

If you want to clear CMOS, unplug the AC power supply first, close CLR_CMOS (pin1 & pin2) once, set CLR_CMOS back to the normal status with pin2 & pin3 connected, then power on the system.



Chapter 3



BIOS Description

The mainboard uses AWARD BIOS Setup program that provides a Setup utility for users to modify the basic system configuration. The information is stored in CMOS RAM so it retains the Setup information when the power is turned off. This chapter provides you with the overview of the BIOS Setup.



AWDFLASH.EXE

This is a flash memory write/read utility used for the purpose of upgrading your BIOS when necessary. Before doing so, please note:

- **We strongly recommend you only upgrade BIOS when encounter problems.**
- **Before upgrading your BIOS, review the description below to avoid making mistakes, destroying the BIOS and resulting in a non-working system.**

Follow the steps exactly for a successful upgrade.

1. Create a bootable system floppy diskette by typing Format A:/s from the DOS prompt under DOS6.xx or Windows 9x environment.
2. Copy AWDFLASH.EXE(version>=8.24) from the directory \Utility located on QDI Driver CD to your new bootable diskette.
3. Download the updated BIOS file from the Website (<http://www.qdigrp.com>). Please be sure to download the suitable BIOS file for your mainboard.
4. Decompress the file download, copy the BIOS file (xx.bin) to the bootable diskette, and note the checksum of this BIOS which is located in readme file.
5. Reboot the system from the bootable diskette created.
6. Then run the AWDFLASH utility at the A:\ prompt as shown below:

```
A:\AWDFLASH xxxx.bin
```

Follow the instruction through the process. Don't turn off power or reset the system until the BIOS upgrade has been completed.

If you require more detailed information concerning AWDFLASH Utility, for example, the different usage of parameters, please type A:\>AWDFLASH /?



Note:

Because the BIOS Software will be updated constantly, the following BIOS screens and descriptions are for reference purposes only and may not reflect your BIOS screens exactly.



AWARD BIOS Description

Entering Setup

Power on the computer, when the following message briefly appears at the bottom of the screen during the POST (Power On Self Test), press key to enter the AWARD BIOS CMOS Setup Utility.

Press to enter SETUP

When you have entered, the Main Menu appears on the screen. Use the arrow keys to select among the items and press the <Enter> key to accept or enter the sub-menu.



Main Menu

Standard CMOS Features Setup

The basic CMOS settings included in “Standard CMOS Features” are Date, Time, Hard Disk Drive Types, Floppy Disk Drive Types etc. Use the arrow keys to highlight the item, then use the <PgUp> or <PgDn> keys to select the value desired in each item.

QDI Innovation Features

This section describes QDI innovation EASY technology.

Advanced BIOS Features

This section allows you to configure your system for basic operation. You have the opportunity to select the system’s default speed, boot-up sequence, keyboard operation, shadowing and security.

Advanced Chipset Features

The chipset features setup is used to change the values of the chipset registers. The registers control most of the system options in the computer.

Power Management Setup

The power management setup menu allows you to configure system to most save energy while operating in a manner consistent with your own style of computer use.

PnP/PCI Configurations

This section describes how to configure the PCI bus system. This section covers some very technical items and it is recommended that only experienced users should make any changes to the default setting.



Integrated Peripherals

The integrated peripherals setup allows user to configure the onboard IDE controller, floppy disk controller, the printer port and the serial ports etc..

PC Health Status

The PC health status display CPU voltage, temperature and fan speed.

Set Supervisor/User Password

Changes, sets, or disables password. It allows you to limit access to the system and the setup program. When this function is selected, the following message appears at the center of the screen to assist you in creating a password.

ENTER PASSWORD

Type the password, up to eight characters, and press <Enter>. The password typed now will clear any previously entered password from CMOS memory. You will be asked to confirm the password. Type the password again and press <Enter>. You may also press <Esc> to abort the selection.

To disable password, just press <Enter> when you are prompted to enter password. A message will confirm the password being disabled. Once the password is disabled, the system will boot and you can enter BIOS Setup freely.

PASSWORD DISABLED

If you have selected "**System**" in "Security Option" of "BIOS Features Setup" menu, you will be prompted for the password every time the system reboots or any time you try to enter BIOS Setup.

If you have selected "**Setup**" at "Security Option" from "BIOS Features Setup" menu, you will be prompted for the password only when you enter BIOS Setup.

Supervisor Password has higher priority than User Password. You can use Supervisor Password when booting the system or entering BIOS Setup to modify all settings. Also you can use User Password when booting the system or entering BIOS Setup but can not modify any setting if Supervisor Password is enabled.

Load Optimized Defaults

The Optimized Defaults are common and efficient. It is recommended users load the optimized defaults first, then modify the needed configuration settings.

Save & Exit Setup

Saves value changes to CMOS and exits setup.

Exit Without Saving

Abandons all CMOS value changes and exits setup.

Note: if you need detailed information about BIOS, please view them in the CD.



Appendix

QDI Utility CD

A QDI Utility CD is supplied with this mainboard, the contents contained in it are showed as below:

1. Driver Install

Using this choice, you can install all the drivers for your mainboard . You should install the drivers in order, and you need to restart your computer until all the drivers are installed.

- A. Chipset software
- B. IAA Setup
- C. USB2.0 Driver
- D. Audio Driver
- E. Network Driver(optional)
- F. DirectX

2. Browse CD

You could read all the contents contained in this CD, including Utility and Documents.

The files included in Utility are:

- A. Awdflash.exe
- B. Cblog.exe
- C. Lf.exe

The files included in Documents are:

- A. Adobe Acrobat Reader V5.0
- B. BIOSmanual_ch
- C. BIOSmanual_en
- D. EASY_ch
- E. EASY_en



BIOS_ProtectEasy



The BIOS of the mainboard is contained inside the Flash ROM. Severe viruses such as CIH virus are so dangerous that it may overwrite the BIOS of the mainboard. If the BIOS has been damaged, the system will be unable to boot. We provide the following solution which protects the system BIOS from being attacked by such viruses.

BootEasy



BootEasy technology enormously improves the long BOOT process time of computers. Reducing the wait time every user has to suffer when starting their computer. BIOS without BootEasy has to perform many routines every time when the system starts, such as checking system core of the computer and initializing system peripherals. Now with the BootEasy, BIOS will not run these repetitive Processes any longer, PC can boot-up without any redundant waiting for the displaying of starting OS. BootEasy save all the information when PC first normally boot-up, and it restores all the parameters for the system and thus let the PC boot freely and rapidly.

Note: if you need detailed information about Easy technology, please view them in the CD or visit our web-site: www.qdigrp.com.

QDI BootEasy(German)

BootEasy ist eine Neuentwicklung von QDI, die neue Innovation der QDI Easy- Technologien. Mit der BootEasy- Technologie Technik wird der Bootvorgang nur noch vier bis fünf Sekunden in Anspruch nehmen, bis das Betriebssystem geladen wird. Der Grund für die lange Wartezeit liegt in den Routine-Abfragen, die das BIOS bei jedem Start abarbeitet. So wird beispielsweise jedes Mal die Taktfrequenz des Prozessors geprüft oder angeschlossene Geräte aktiviert. Die BootEasy-Technik prüft diese Punkte nur beim erstmaligen Start des Rechners und speichert die Ergebnisse in einem Flash ROM. Beim nächsten Start ruft das System lediglich diese Informationen aus dem Speicher ab und kann so innerhalb von wenigen Sekunden den Boot-Prozess abschließen.

Bei Änderungen am System, beispielsweise nach dem Einbau eines neuen Prozessors, muss deshalb zuvor die BootEasy-Funktion deaktiviert werden, beim nächsten Start werden die neuen Informationen dann erneut abgespeichert.

Falls Fehler im Flash ROM den Bootvorgang behindern, versucht das System drei Mal den Rechner hochzufahren, bei Misserfolg schaltet es auf die althergebrachte Art zu booten um, das heißt, es dauert wieder ebenso lang wie früher. Anschließend kann die BootEasy – Technik wieder aktiviert werden.

Falls Fehler im Flash ROM den Bootvorgang behindern, versucht das System drei Mal den Rechner hochzufahren, bei Misserfolg schaltet es auf die althergebrachte Art zu booten um, das heißt, es dauert wieder ebenso lang wie früher. Anschließend kann die BootEasy – Technik wieder aktiviert werden.



Instalación de la placa base QDI XT4500(Spanish):

1. Asegúrese que se incluyen los siguientes artículos: Placa base QDI XT4500, 1 cable de datos para el puerto IDE y 1 cable de datos para el Floppy, jumpers, 1 manual de usuario QDI XT4500y un disco compacto con los controladores de la placa base QDI XT4500.
2. Asegúrese de que el cable de la fuente de alimentación esta desconectado y asegúrese de estar en contacto a masa utilizando una pulsera antiestática. Si no dispone de dicha pulsera, toque un objeto directamente conectado a masa o una parte metálica de su equipo como puede ser la caja de este.
3. Fije la placa base en la caja de su equipo con los tornillos especiales que acompañan a su caja.
4. Los jumpers están localizados en la placa base, con ellos se configuran, por ejemplo: Clear CMOS CLR_CMOS, Habilitar BIOS ProtectEasy BIOS_WP etc..., el PIN1 para todos los jumpers esta marcado con una línea más gruesa (Consulte el apartado "Jumper Settings" en el manual de usuario de su placa QDI XT4500 en el capítulo 2).
5. Inserte el procesador en el socket y conecte el ventilador del procesador en el conector de su placa base QDI XT4500 marcado como "CPUFAN".
6. Inserte los módulos de memoria en los bancos de memoria DIMM de su placa base QDI XT4500.
7. Inserte las tarjetas PCI y/o la tarjeta AGP en las bahías de expansión de su placa base QDI XT4500.
8. Conecte los periféricos internos IDE y las disqueteras mediante los cables de datos específicos a su placa base QDI XT4500. Asegúrese que la orientación de los cables sea la correcta. (El cable rojo se corresponde con el pin 1).
9. Conecte los cables de la caja del ordenador a su placa base QDI XT4500, como el conector de la fuente de alimentación, los testigos de corriente, y lectura de disco duro, interruptores de inicio y reset (consulte el apartado "External Connectors" del manual de usuario de su placa base QDI XT4500).
10. Conecte los diferentes periféricos externos como el teclado PS/2, ratón PS/2, serie o USB, los dispositivos USB, el monitor y la impresora a la placa base QDI XT4500 (consulte el apartado "External Connectors" en el manual de su placa base QDI XT4500, en el capítulo 2).
11. Cuando haya finalizado de realizar todas las conexiones, conecte el cable de alimentación a la fuente de alimentación y encienda su PC:



Instalación del sistema:

1. Encienda su equipo mediante el interruptor de encendido de la caja.
2. Presione la tecla « Supr » para entrar en el menú de configuración de la BIOS.
3. Seleccione los valores de la Bios en concordancia con la configuración de su sistema (Nosotros le recomendamos que deje los valores establecidos por la Bios por defecto, para evitar posibles fallos que ocasionen que su sistema no funcione correctamente). Para más información las funciones de la Bios, consulte el apartado “BIOS Description” en el manual de usuario de la placa base QDI XT4500). Presione la tecla « F10 » y seleccione la opción “Save & Exit Setup” en el menú de configuración de la Bios para guardar los cambios y reiniciar el sistema.
4. Instale el sistema operativo en el disco duro, no se olvide de seleccionar la secuencia de inicio correcta para que el sistema operativo pueda iniciarse.
5. Después de la instalación del sistema operativo, asegúrese que no hay conflictos con ningún dispositivo de su sistema.
6. Entonces, después del último paso, proceda a la instalación de los controladores de los diferentes dispositivos.

Un disco compacto con controladores de QDI esta incluido en el paquete de la placa base QDI XT4500.

1. Instalación de los controladores

Usted puede instalar todos los controladores para su placa base facilmente. Tiene que instalar los controladores en el siguiente orden para un correcto funcionamiento del sistema, y es necesario reiniciar el equipo antes de finalizar la instalación de los controladores.

- | | |
|-----------------------------|---------------------------|
| A. Chipset software | B. IAA Setup |
| C. USB2.0 Driver(optional) | D. Audio Driver(optional) |
| E. Network Driver(optional) | F. DirecrX |

2. Navegue por el CD

Usted puede leer todos los documentos incluidos en este CD, incluidos Utility and Documents.

Los ficheros incluidos en **Utility** son:

- | | |
|-----------------|---------------|
| A. Awdflash.exe | B. Cblogo.exe |
| C. Lf.exe | |



Manuel d'installation des cartes mères de la série QDI XT4500 (French):

Intégration du système :

1. Vérifier la présence de chaque élément dans la boîte de la carte mère de la série QDI XT4500 :

Une carte mère de la série QDI XT4500.

- Un CD-ROM d'installation QDI.
- Un manuel d'utilisation de la carte mère QDI XT4500.
- Un sachet de cavaliers.
- Une nappe IDE compatible avec la norme ATA/66 destinée au lecteur de disque dur.

Une nappe destinée au lecteur de disquette.

- Un fond de panier métallique destiné à l'unité centrale de l'ordinateur
- (Caractéristique technique optionnelle).

Un câble d'extension destiné à permettre l'exploitation des ports USB 3 et

- USB 4 ou USB 5 et USB 6 (Caractéristique technique optionnelle).

2. Vérifier que le câble électrique relié au boîtier d'alimentation de l'unité centrale de l'ordinateur est déconnecté. Se relier à la terre grâce à un bracelet lié au poignet. A défaut de disposer d'un bracelet, maintenir un contact physique avec un objet lui-même relié à la terre, ou à une partie métallique du système comme la structure de l'unité centrale de l'ordinateur.
3. Fixer la carte mère dans l'unité centrale de l'ordinateur grâce aux vis fournies avec cette dernière lors de son achat.
4. S'assurer que la carte mère de la série QDI XT4500 est matériellement correctement configurée, pour cela vérifier que les cavaliers insérés sur les broches intégrées de cette dernière sont correctement positionnés. Dans ce but il est important de se référer à la section nommée « Configuration des cavaliers » du chapitre numéro 2 nommé « Instructions d'installation » contenu dans le manuel d'utilisation livré avec la carte mère de la série QDI XT4500 lors de son achat.
5. Connecter le processeur dans le socket intégré à la carte mère de la série QDI XT4500 et prévus à cet effet. Fixer le système de refroidissement de ce dernier et connecter son ventilateur sur les broches nommées « CPUFAN » intégrées à la carte mère de la série QDI XT4500 et prévus à cet effet.
6. Connecter les éventuelles barrettes de mémoire dans les slots intégrés à la carte mère de la série QDI XT4500 et prévus à cet effet.
7. Connecter les éventuelles cartes d'extension au format AGP, PCI dans les slots intégrés à la carte mère de la série QDI XT4500 et prévus à cet effet
8. Connecter les éventuels périphériques IDE ainsi que le lecteur de disquette à la carte mère de la série QDI XT4500 grâce aux nappes fournies avec cette dernière lors de son achat. S'assurer que l'orientation des nappes connectées est correcte en vérifiant



que le liseré rouge de ces dernières correspond à l'emplacement de la broche numéro 1 du connecteur.

9. Connecter les câbles de l'unité centrale de l'ordinateur sur les broches intégrées à la carte mère de la série QDI XT4500 et prévues à cet effet. Dans ce but il est important de se référer à la section nommée « Connecteurs externes » du chapitre numéro 2 nommé « Instructions d'installation » contenu dans le manuel d'utilisation livré avec la carte mère de la série QDI XT4500 lors de son achat.
10. Raccorder les périphériques externes sur les connecteurs de fond de panier intégrés à la carte mère de la série QDI XT4500. Dans ce but il est important de se référer à la section nommée « Connecteurs externes » du chapitre numéro 2 nommé « Instructions d'installation » contenu dans le manuel d'utilisation livré avec la carte mère de la série QDI XT4500 lors de son achat.
11. Lorsque tous les éléments du système sont correctement intégrés, il est possible de reconnecter le câble électrique au boîtier d'alimentation de l'unité centrale de l'ordinateur.

Installation du système :

1. Démarrer le système en pressant l'interrupteur de fonctionnement de l'unité centrale de l'ordinateur.
2. Presser la touche "Suppr" du clavier afin d'entrer dans le menu de BIOS.
3. Dans le menu de BIOS nommé "QDI Innovation features", ajuster la fréquence de fonctionnement du processeur. Attention, il est fortement recommandé de charger les réglages de sûreté par défaut afin d'éviter un éventuel dysfonctionnement du système. Dans ce but il est important de se référer à la section nommée « Description du BIOS Award » du chapitre numéro 3 nommé « Description du BIOS » contenu dans le manuel d'utilisation livré avec la carte mère de la série QDI XT4500 lors de son achat.
4. Procéder à l'installation du système d'exploitation sur le lecteur de disque dur intégré au système. Dans ce but il est important de vérifier que la séquence de démarrage du système paramétrable à partir du menu de BIOS permet à la procédure d'installation du système d'exploitation de s'initialiser.
5. Une fois l'installation du système d'exploitation achevée, vérifier qu'il ne subsiste aucun conflit ou périphérique inconnu au sein du système.
6. Après cette étape, procéder à l'installation des pilotes de chaque périphérique détecté par la carte mère de la série QDI XT4500.



Lors de son achat un CD-ROM d'installation QDI est livré avec la carte mère de la série QDI XT4500.

1. Driver Install :

Avec cette option, il est possible d'installer les pilotes de la carte mère de la série QDI XT4500 aisément. Il est important d'installer les pilotes en respectant l'ordre prédéfini et de redémarrer le système après avoir effectué l'installation de tous les pilotes.

Applications contenues dans le dossier :

- | | |
|-----------------------------|-----------------|
| A. Chipset software | B. IAA Setup |
| C. USB2.0 Driver | D. Audio Driver |
| E. Network Driver(optional) | F. DirecrX |

2. Browse CD :

Avec cette option, il est possible de consulter l'ensemble des données contenues sur le CD-ROM d'installation QDI

Applications contenues dans le dossier :

- | | |
|------------------|---------------|
| A. Awdflash.exe. | B. Cblog.exe. |
| C. Lf.exe. | |



QDI XT4500 installazione mainboard (Italian):

1. Assicurarsi che la scatola sia completa: QDI XT4500mainboard, cavo IDE e Floppy, jumpers, manuale dell'utente della mainboard QDI XT4500 e cd-rom drivers.
2. Controllare che il cavo alimentazione proveniente dal computer-case sia sconnesso assicurarsi inoltre di aver indossato correttamente il bracciale da polso collegato a massa. In mancanza di questo toccare un punto a massa o una parte metallica del case
3. Fissare la mainboard nel case con le speciali viti fornite con il computer-case
4. I jumper locati sulla mainboard rappresentano: CLR_CMOS azzeratore BIOS, BIOS_WP abilitatore/disabilitatore in BIOS della funzione protectEasy; per tutti i jumper il PIN 1 e' contrassegnato da un spessa linea bianca (consultare il manuale al capitolo 2 " JUMPER ANDSETTINGS")
5. Inserire il processore nell'apposito slot ; la ventola del processore deve essere collegato nello speciale connettore targato " CPUFAN ".
6. Inserire il modulo/i di memoria nell'apposito memory slots
7. Inserire le periferiche Pci negli appositi Pci slots
8. Collegare le periferiche IDE e il FLOPPY con l'apposito cavo fornito con la mainboard negli specifici connettori marcati. Assicurarsi che l'orientamento del cavo sia corretto. (La linea rossa sul cavo deve essere inserita nell'apposito connettore in corrispondenza del pin 1)
9. Conettere la mainboard con: il cavo di alimentazione proveniente dall'alimentatore, il connettore dell'interuttore di stand by, il connettore del led di segnalazione "acceso", il connettore led di funzionalita' HARD DISK, il connettore dello speaker interno al CASE..... (consultare il manuale capitolo 2. "EXTERNAL CONNECTORS". Dopo chiudere il CASE)
10. Connettere le differenti periferiche esterne come il PS/2 mouse, la PS/2 tastiera, le prese USB, il monitor e la stampante con gli specifici connettori posizionati sulla faccia esterna della mainboard.
11. Quando la vostra configurazione sara' tutta connessa, aggangiare il cavo di alimentazione.

Installazione di sistema

1. Portare in posizione di accesso l'interuttore di ACCESO
2. Usare il tasto DEL per entrare nel nel software di configurazione del BIOS
3. Regolare le funzioni del BIOS in accordo con la configurazione di sistema (Noi ti raccomandiamo di usare l'impostazione di default per evitare rischi di anomalie di funzionalita'). Per maggiori informazioni controllare il capitolo 3, sezione "BIOS DESCRIPTION". Premere F10 sulla tastiera o scegliere "SAVE and EXIT" dal menu di BIOS per salvare le impostazioni scelte ed uscire dal BIOS program.
4. Installare il sistema operativo , non dimenticando di mettere nelle giuste condizioni di partenza la sequenza di boot.
5. Dopo una giusta installazione accertarsi che non vi siano conflitti tra le periferiche in



uso

6. Dopo questo ultimo passo procedere all'installazione dei driver delle varie periferiche

IL CD CONTENENTE I DRIVER DELLA VOSTRA MAINBOARD QDI E' CONTENUTO NELLA SCATOLA

1. Installazione driver

E' possibile installare tutti i driver della Vs. mainboard in modo facile e veloce. Dovreste installare i driver nella seguente successione, finito cio' bisogna far ripartire il personal computer.

- | | |
|-----------------------------|-----------------|
| A. Chipset software | B. IAA Setup |
| C. USB2.0 Driver | D. Audio Driver |
| E. Network Driver(optional) | F. DirecrX |

2. Guardando il CD

Questo manuale di installazione e' disponibile anche nella sua versione elettronica all'interno del cd accompagnativo, insieme anche diverse utili quali:

- | | |
|-----------------|--------------|
| A. Awdflash.exe | B. Cblog.exe |
| C. Lf.exe | |



Using 4-/6-Channel Audio(4-/6- Channel Audio Interface)

The motherboard is equipped with AD1888 chip, which provides support for 6-channel audio output, including 2 Front, 2 Rear, 1 Center and 1 Subwoofer channel. AD1888 allows the board to attach 4 or 6 speakers for better surround sound effect. The section will tell you how to install and use 4/6-channel audio function on the board.

Installing the Audio Driver

The AD1888 chipset driver has to be installed before the 4-/6-Channel audio function can be used.

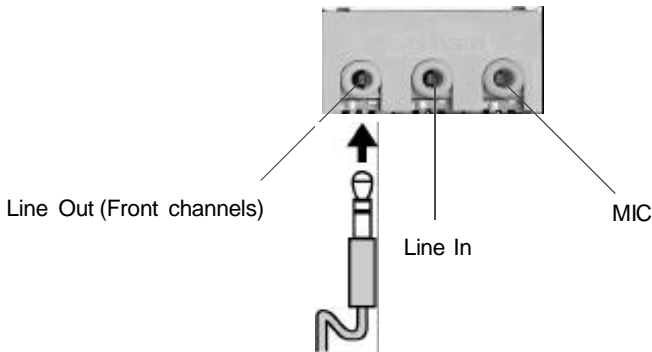
Using 4-/6-channel Audio Function

You can start to use the 4-/6-channel audio function After the driver is installed completely. The first, you can connect 4 or 6 speakers to the audio output connector. Then open utility to set the work parameter.

Attaching speakers

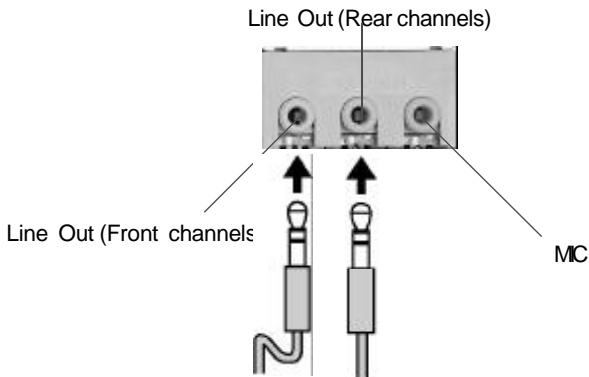
To perform multichannel audio operation, connect multiple speakers to the system. You should connect the same number of speakers as the audio channels you will select in the software utility.

2-Channel Analog Audio Output



Description: Line Out, Line In and MIC functions all exist under 2-channel configuration.

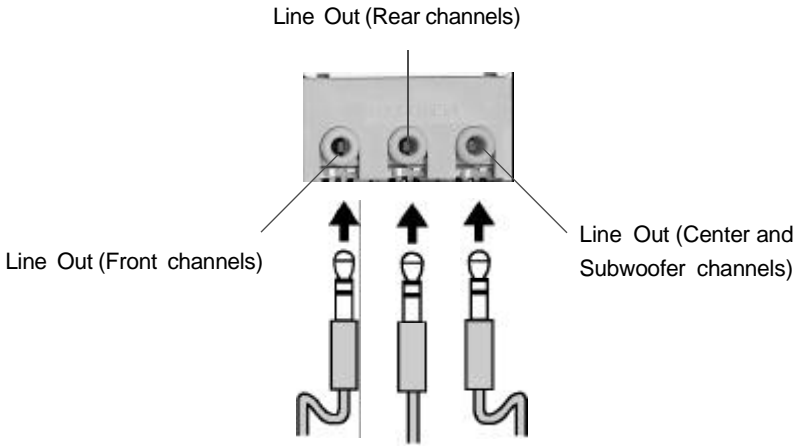
4-Channel Analog Audio Output



Description: Line In is converted to Line Out function under 4-channel configuration.




6-Channel Analog Audio Output

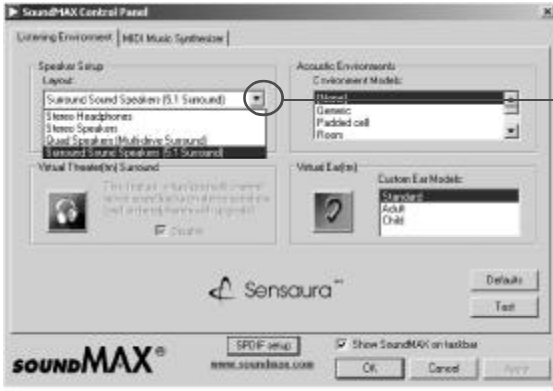


Description: Both Line In and MIC are converted to Line Out function under 6-channel configuration.



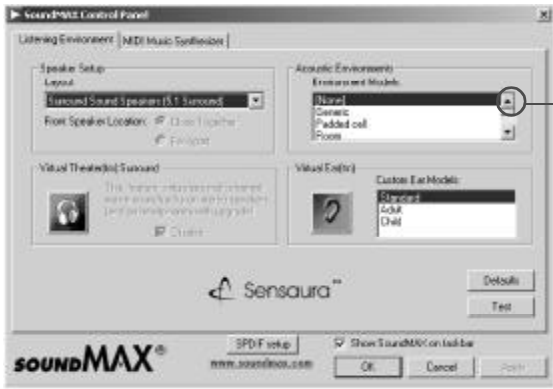
Selecting 4- or 6-Channel Setting

1. Double click the audio icon  from the window tray at the bottom of the screen.
2. Select the multi-channel operation you prefer from **Speaker Setup Layout** under the **Listening Environment** tab and Click **OK**.



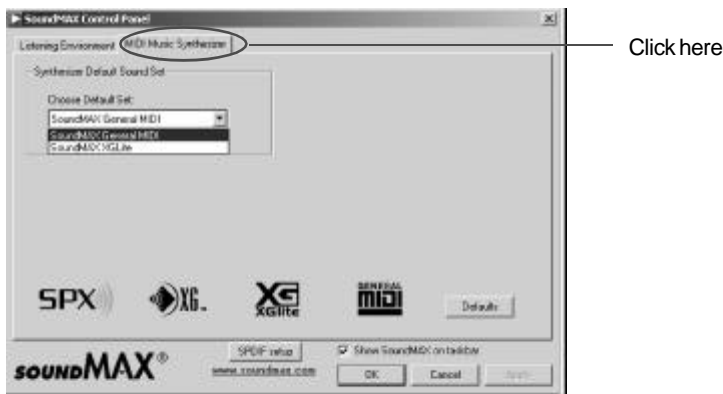
Click here and the pull-down menu will appear

3. Select any surround sound effect you prefer from the “Environment Models” pull-down menu.



Click here


4. Click the **MIDI Music Synthesizer** tab and set synthesizer default sound.



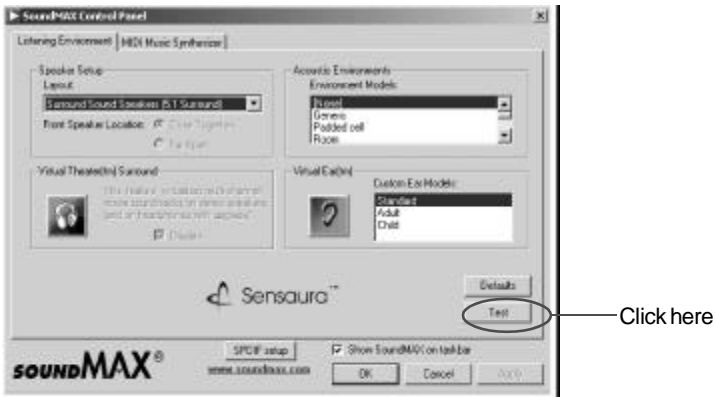
Testing the Connected Speakers

To ensure 4- or 6-channel audio operation works properly, you may need to test each connected speaker to make sure every speaker work properly. If any speaker fails to sound, then check whether the cable is inserted firmly to the connector or replace the bad speakers with good ones.

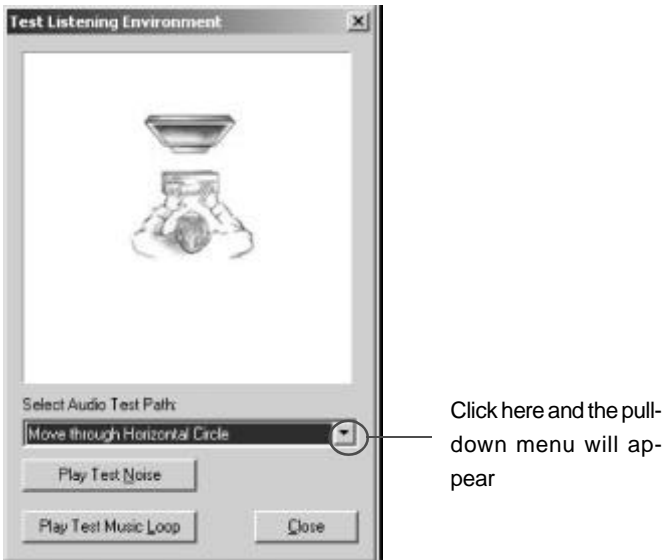
Testing Each Speaker

1. Double click the audio icon  from the window tray at the bottom of the screen.
2. Click the **Listening Environment** tab.

3. The following window appears and click Test button.



4. The following window appears and Select Audio test path from the “Audio Test Path” pull-down menu.



5. Select test noise or music loop.

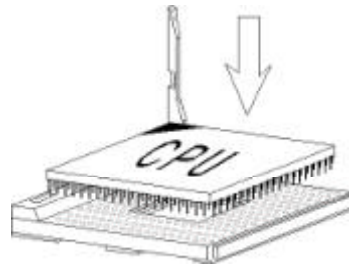


CPU Installation Procedures

1. Pull the lever sideways away from the socket. Then, raise the lever up to a 90-degree angle.



2. Look for the cut edge. The cut edge should point towards the lever pivot. The CPU will only fit in the correct orientation. If the CPU is correctly installed, the pins should be completely embedded into the socket and can not be seen.



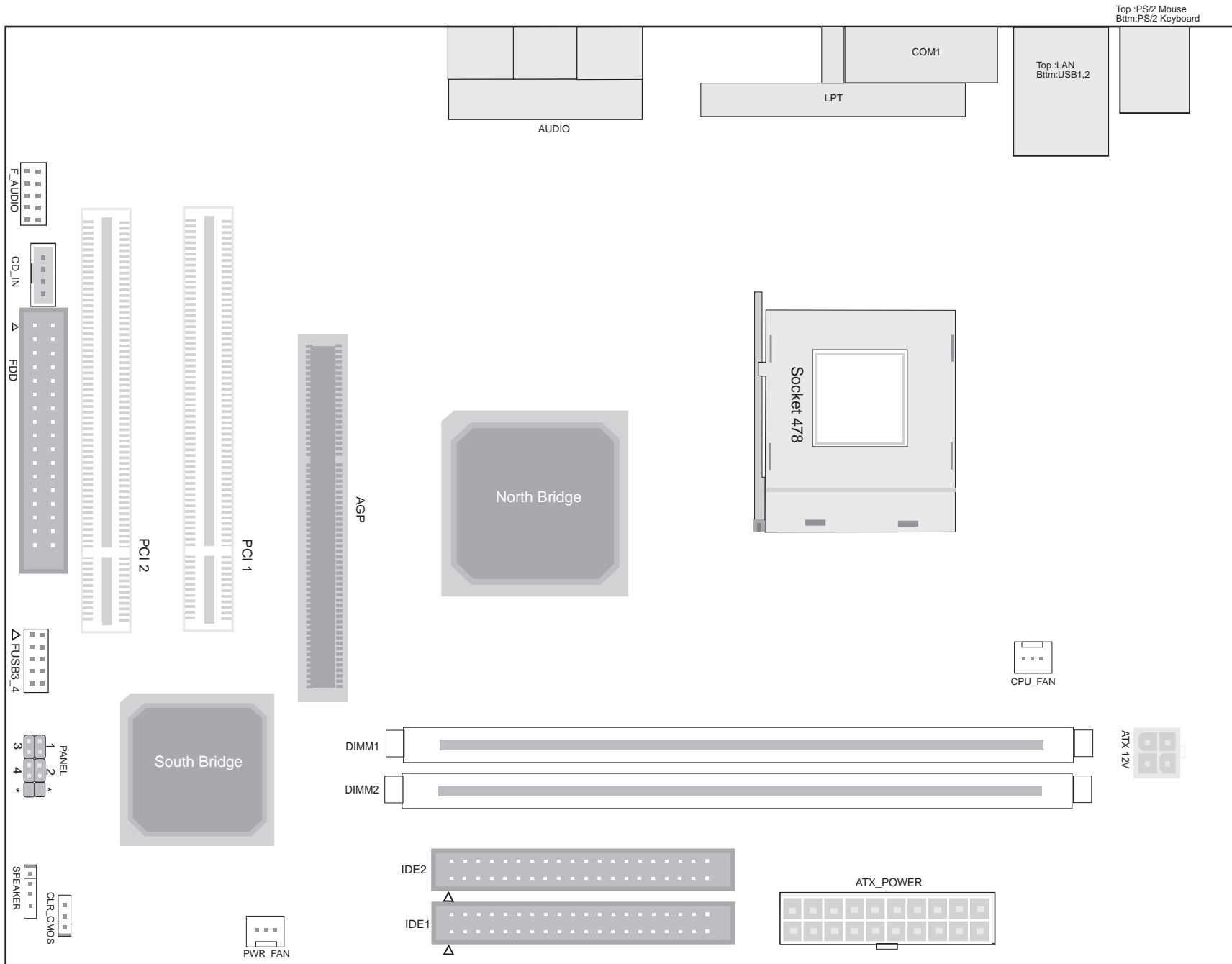
3. Hold the CPU down firmly, and then close the lever to complete installation.



Warning: *Overheating will seriously damage the CPU and system, always make sure the cooling fan can work properly to protect the CPU from overheating.*

Board Layout of XT4500

Note:
The layout includes all options.
It is for your reference only.



Note: pin1 for a jumpers are located on the side with black line.
 1. PWR_LED 2. PWR_SW * EMPTY 3. HDD_LED 4. RESET * REVERSE