

USER'S MANUAL
Of
AMD 770 & AMD SB700
Based
M/B For Socket AM2+ 64-bit Quad Core
AMD Processor

NO. G03-XBLUE77A2 -F

Rev: 1.0

Release date: Aug., 2008

Trademark:

* Specifications and information contained in this documentation are furnished for information use only, and are subject to change at any time without notice, and should not be construed as a commitment by manufacturer.

Environmental Protection Announcement

Do not dispose this electronic device into the trash while discarding. To minimize pollution and ensure environment protection of mother earth, please recycle.



TABLE OF CONTENT

USER'S NOTICE.....	iv
MANUAL REVISION INFORMATION	iv
COOLING SOLUTIONS	iv
CHAPTER 1 INTRODUCTION OF AMD 770 MOTHERBOARDS	
1-1 FEATURES OF MOTHERBOARD	1
1-1.1 SPECIAL FEATURES OF MOTHERBOARD.....	2
1-2 SPECIFICATION.....	3
1-3 PERFORMANCE LIST	4
1-4 LAYOUT DIAGRAM & JUMPER SETTING.....	5
CHAPTER 2 HARDWARE INSTALLATION	
2-1 HARDWARE INSTALLATION STEPS.....	7
2-2 CHECKING MOTHERBOARD'S JUMPER SETTING	7
2-3 INSTALL CPU.....	8
2-3-1 GLOSSARY.....	8
2-3-2 ABOUT AMD Athlon64 Socket AM2+ CPU.....	9
2-4 INSTALL MEMORY	10
2-5 EXPANSION CARDS	11
2-5-1 PROCEDURE FOR EXPANSION CARD INSTALLATION.....	11
2-5-2 ASSIGNING IRQS FOR EXPANSION CARD.....	11
2-5-3 INTERRUPT REQUEST TABLE FOR THIS MOTHERBOARD.....	11
2-5-4 PCI-EXPRESS2.0 SLOT	12
2-6 CONNECTORS, HEADERS	12
2-6-1 CONNECTORS.....	12
2-6-2 HEADERS	15
2-7 STARTING UP YOUR COMPUTER	19
CHAPTER 3 INTRODUCING BIOS	
3-1 ENTERING SETUP	20
3-2 GETTING HELP	20
3-3 THE MAIN MENU.....	21
3-4 STANDARD CMOS FEATURES	22
3-5 ADVANCED BIOS FEATURES.....	23
3-5-1 CPU Features	25
3-6 ADVANCED CHIPSET FEATURES.....	25
3-6-1 DRAM CONFIGURATION	26
3-6-2 HT LINK CONTROL	27
3-6-3 PCIE CONFIGURATION	27
3-7 INTEGRATED PERIPHERALS	28
3-7-1 SUPER IO DEVICE	28
3-7-2 ONCHIP IDE FUNTION.....	29
3-7-3 ONCHIP SATA FUNCTION.....	30
3-7-4 ONCHIP PCI DEVICE	31
3-8 POWER MANAGEMENT SETUP	31

3-9	MISCELLANEOUS CONTROL.....	32
3-10	PC HEALTH STATUS.....	33
3-11	POWER USER OVERCLOCK SETTING.....	34
3-12	CPU THERMAL THROTTLING OPTIONS.....	36
3-13	LOAD FAIL-SAFE DEFAULTS	36
3-14	LOAD OPTIMISED DEFAULTS	36
3-15	SET PASSWORD SETTINGS	36
CHAPTER 4 DRIVER & FREE PROGRAM INSTALLATION		
	MAGIC INSTALL SUPPORTS WINDOWS 9X/ME/NT4.0/2000/XP	37
4-1	ATI INSTALL ATI DRIVER PACK.....	38
4-2	SOUND INSTALL ALC 662 HD CODEC AUDIO DRIVER	38
4-3	LAN INSTALL TEALTEK LAN CONTROLLER DRIVER.....	39
4-4	RAID INSTALL ATI SATA DRIVER AND UTILITY	40
4-5	PC-CILLIN INSTALL PC-CILLIN 2007 ANTI-VIRUS PROGRAM	41
4-6	PC-HEALTH INSTALL MYGUARD HARDWARE MONITOR UTILITY	41
4-7	OVERCLOCK INSTALL OVERCLOCK UTILITY	42
4-8	HOW TO UPDATE BIOS.....	43
4-9	AMD PLATFORM RAID FUNCTION INSTALLATION	44
4-10	PRO MAGIC PLUS FUNCTION INTRODUCTION.....	48

USER'S NOTICE

COPYRIGHT OF THIS MANUAL BELONGS TO THE MANUFACTURER. NO PART OF THIS MANUAL, INCLUDING THE PRODUCTS AND SOFTWARE DESCRIBED IN IT MAY BE REPRODUCED, TRANSMITTED OR TRANSLATED INTO ANY LANGUAGE IN ANY FORM OR BY ANY MEANS WITHOUT WRITTEN PERMISSION OF THE MANUFACTURER.

THIS MANUAL CONTAINS ALL INFORMATION REQUIRED TO USE XBLUE-77A2 MOTHERBOARD AND WE DO ASSURE THIS MANUAL MEETS USER'S REQUIREMENT BUT WILL CHANGE, CORRECT ANY TIME WITHOUT NOTICE. MANUFACTURER PROVIDES THIS MANUAL "AS IS" WITHOUT WARRANTY OF ANY KIND, AND WILL NOT BE LIABLE FOR ANY INDIRECT, SPECIAL, INCIDENTAL OR CONSEQUENTIAL DAMAGES (INCLUDING DAMAGES FOR LOSS OF PROFIT, LOSS OF BUSINESS, LOSS OF USE OF DATA, INTERRUPTION OF BUSINESS AND THE LIKE).

PRODUCTS AND CORPORATE NAMES APPEARING IN THIS MANUAL MAY OR MAY NOT BE REGISTERED TRADEMARKS OR COPYRIGHTS OF THEIR RESPECTIVE COMPANIES, AND THEY ARE USED ONLY FOR IDENTIFICATION OR EXPLANATION AND TO THE OWNER'S BENEFIT, WITHOUT INTENT TO INFRINGE.

Manual Revision Information

Reversion	Revision History	Date
1.0	First Edition	Aug, 2008

Item Checklist

- XBLUE AMD 770 Chipset based motherboard
- User's Manual
- HDD Cable
- SATA Cable
- CD for Motherboard Utilities
- I/O Back Panel Shield

AMD K10 Processor Family Cooling Solutions

As processor technology pushes to faster speeds and higher performance with increasing operation clock, thermal management becomes increasingly crucial while building computer systems. Maintaining the proper computing environment without thermal increasing is the key to reliable, stable, and 24 hours system operation. The overall goal is keeping the processor below its specified maximum case temperature. Heatsinks induce improved processor heat dissipation through increasing surface area and concentrated airflow from attached active cooling fans. In addition, interface materials allow effective transfers of heat from the processor to the heatsink. For optimum heat transfer, AMD recommends the use of thermal grease and mounting clips to attach the heatsink to the processor.

Please refer to the website below for collection of heatsinks evaluated and recommended for Socket AM2+ processors by AMD. In addition, this collection is not intended to be a comprehensive listing of all heatsinks that support Socket-AM2+ processors.

Chapter 1

Introduction of AMD 770 Motherboards

1-1 Features of motherboard

The AMD 770 chipset motherboard series are based on the latest AMD 770 chipset and the SB700 chipset which supports the innovative 64-bit AMD Socket AM2+ quad core and dual core multi-tasking Socket AM2+ AMD Phenom™ processors. With an integrated low-latency high-bandwidth DDRII memory controller, AMD 770 chipset platform based motherboard series deliver the outstanding system performance and professional desktop platform solution with the advantages of 64-bit AMD Socket AM2+ and Socket AM2 AMD Phenom™, Athlon64 FX, Athlon64 X2, Athlon64 & Sempron processors.

The AMD 770 Series motherboards support new generation Socket AM2+ processors with an integrated DDRII memory controller for dual channel DDRII533 / DDRII667 / DDRII800 / DDRII1066 (AM2 Sempron processors only support up to DDRII667 memory) DDRII Module up to 4 GB. The motherboard is embedded with SB700 chipset of providing ULTRA ATA 133 connector and Serial ATA2 with RAID 0, 1, 10 and JBOD functions which support up to two IDE and six Serial ATA2 devices to accelerate hard disk drives and guarantee the data security without failure in advanced computing performance.

The AMD 770 motherboards provide 10/100/1000 LAN function with RealTek RTL8111CVC PCI-E Gigabit LAN which supports optional 10/100/1000Mbps data transfer rate. And the embedded Azalia 6-channel ALC 662 Audio CODEC is fully compatible with Sound Blaster Pro standards that offer you with the home cinema quality and satisfying software compatibility.

The AMD 770 series motherboards deliver outstanding value and performance for gamers, with a true bandwidth design for Multi-GPU configurations. This high bandwidth architecture in the AMD 770 chipset is combined with the flexibility for single or dual card configurations. The AMD 770 chipset provide two x16 PCI Express 2.0 slots to support simultaneous operation of graphics cards for astonishing performance with brilliant and intense 3D graphics.

AMD 770 series motherboard series offer two PCI-Express2.0 x16 graphics slots. One PCI-Express2.0 x16@ 16 lane slot delivers up to 8 Gbyte/sec data transfer rate at each relative direction and up to 16 Gbyte/sec concurrently while the other PCI Express 2.0@ 4 lane delivers 4Gbyte/sec concurrently. One PCI Express2.0 x1 I/O slot offers 1 Gbyte/sec concurrently, over 7 times more bandwidth than PCI at 133Mbyte/sec, tackling the most demanding multimedia tasks nowadays. The AMD 770 motherboards also carry two 32-bit PCI slots guarantee the rich connectivity for the I/O peripheral devices.

Embedded USB controllers as well as capability of expanding to 8 of USB2.0 functional ports delivering 480Mb/s bandwidth of rich connectivity, these motherboards meet the future USB demands which are also equipped with hardware monitor function on system to monitor and protect your system and maintain your non-stop business computing.

Some special features--- *CPU Thermal Throttling / CPU Smart Fan / OC-CON/G.P.I Function /Wi-Fi Technology* in this motherboard are designed for power user to use the over-clocking function in more flexible ways. But please be caution that the over-clocking maybe causes the fails in system reliabilities. This motherboard provides the guaranteed performance and meets the demands of the next generation computing. But if you insist to gain more system performance with variety possibilities of the components you choose, please be careful and make sure to read the detailed descriptions of these value added product features, please get them in the coming section.

1-1.1 Special Features of Motherboard

CPU Thermal Throttling Technology--- (The CPU Overheat Protection Technology)

To prevent the increasing heat from damage of CPU or accidental shutdown while at high workload, the CPU Thermal Throttling Technology will force CPU to enter partially idle mode from 87.5% to 12.5% according to preset CPU operating temperature in BIOS (from 40 °C to 90°C). When the system senses the CPU operating temperature reaching the preset value, the CPU operating bandwidth will be decreased to the preset idle percentage to cool down the processor. When at throttling mode the beeper sound can be optionally selected to indicate it is in working. (For detail operating please read Section 3-11 Bi-turbo Configuration)

CPU Smart Fan---(The Noise Management System)

It's never been a good idea to gain the performance of your system by sacrificing its acoustics. CPU Smart Fan Noise Management System is the answer to control the noise level needed for now-a-day's high performance computing system. The system will automatically increase the fan speed when CPU operating loading is high, after the CPU is in normal operating condition, the system will low down the fan speed for the silent operating environment. The system can provide the much longer life cycle for both CPU and the system fans for game use and business requirements.

OC-CON --- (High-polymer Solid Electrolysis Aluminum Capacitors)

The working temperature is from 55 degrees Centigrade below zero to 125 degrees Centigrade, OC-CON capacitors possess superior physical characteristics that can be while reducing the working temperature between 20 degrees Centigrade each time, intact extension 10 times of effective product operation lives, at not rising degrees Centigrade of working temperatures each time a relative one, life of product decline 10% only too.

G.P.I Function---(Green power indicator function)

The full name of G.P.I technology is Green Power Indicator technology, obviously technology utilized to low power consumption. G.P.I is a technology with remarkable power saving function.

WI-FI Technology

WIFI--Full name is wireless Fidelity. It has been used in notebook, mobile phone, PDA, digital cameras and Mobile Terminals widely. With WIFI. We do not need to worry about the speed and high spending when we are dialing long-distance calls, browsing web pages, receiving and sending E-mails, loading music, delivering digital photos.

1-2 Specification

Spec	Description
Design	* ATX form factor 4 layers PCB size:29.5cm x20.0cm
Chipset	* AMD 770 North Bridge Chipset * AMD SB700 South Bridge Chipset
CPU Socket AM2+	* Support 64bit AMD Socket AM2+ processor utilizing Flip-Chip Pin Grid Array package * Support AMD Athlon64 Athlon 64x2 processor, Athlon 64 & Sempron Processors * Support AMD Phenom™ processors * Support HT3.0
Memory Socket	* 240-pin DDRII Module socket x 2 * Support 2pcs DDRII533/DDRII667/DDRII800/DDRII1066 Modules expandable to 4 GB * Dual channel supported
Expansion Slot	* PCI-Express2.0 x16 slot 2pcs * 1pc PCI-Express2.0 x1 slot delivers up to 1GB/s concurrent bandwidth * 32-bit PCI slot x 2pcs
Integrate IDE and Serial ATA2 RAID	* One IDE controllers support PCI Bus Mastering, ATA PIO/DMA and the ULTRA DMA 33/66/100/133 functions that deliver the data transfer rate up to 133 MB/s for 2 IDE Devices and for 6 Serial ATA2 ports providing 300 MB/sec data transfer rate with RAID 0, 1, 10 and JBOD functions
Gigabit LAN	* Integrated RealTek RTL8111CVC PCI-E 10 / 100 / 1000 LAN. * Support Fast Ethernet LAN function of providing 10Mb/100Mb/1000 Mb/s data transfer rate
6 CH-Audio	* Realtek ALC662 Azalia 6-channel Audio Codec integrated * Audio driver and utility included
BIOS	* Award 8MB Flash ROM BIOS
Multi I/O	* PS/2 keyboard and PS/2 mouse connectors * Floppy disk drive connector x1/ Hard disk drive connector x1 * SPDIF Out Connector x1 * Serial Port Connector x1 * USB2.0 port x 4 and headers x 2 * RJ45 LAN Connector x1 * Audio connector x1 (Line-in, Line-out, MIC/ 8CH Audio) * HDMI-SPDIF header x1 / IR headerx1 * Wi-Fi Header x 1

1-3 Performance List

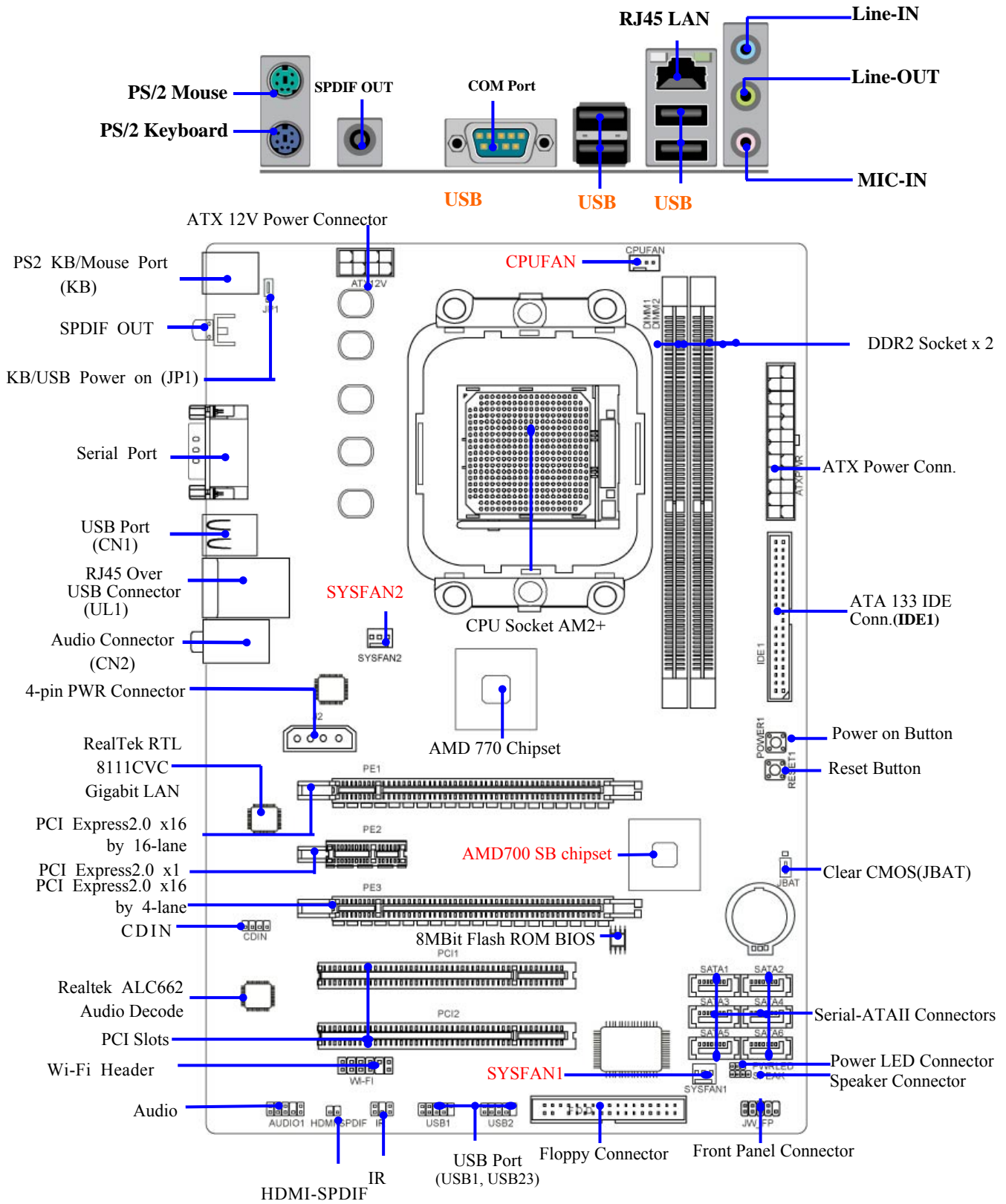
The following performance data list is the testing result of some popular benchmark testing programs. These data are just referred by users, and there is no responsibility for different testing data values gotten by users (the different Hardware & Software configuration will result in different benchmark testing results.)

Performance Test Report

CPU: AMD Athlon 5000+
DRAM: PNY DDR2-800 1G Memory x2
VGA Card : X2600XT
Hard Disk Driver: Seagate 250 GB
BIOS: A01
OS: Windows XP Professional (SERVICE PACK 2)

		AMD 770 Chipset Based Motherboard
3D Mark 2001SE		20993
3D Mark 2003		11820
3D Mark 2005		8490
PCMark2005		
System / CPU / Memory		1017/4069/2867
Graph / HDD		4884/NG
Content Creation Winstone 2004		33.7
Business Winstone 2004		22.5
Winbench 99 V2.0:		
Business/Hi-end Graphic Winmark99		243002.3
Business/Hi-end Graphic Winmark		N/A
SISMark 2004: SISMark Rating(Internet Content Creation / Office Productivity)		
SISMark 2007		269/165
3D Creation		238/331
Web publication E-learning		248
Communication/Document Creation		133/203
Data Analysis		166
SISOFT Sandra 2004 : 1.CPU Arithmetic Benchmark 2.Memory bandwidth Benchmark 3.CPU Multi-Media Benchmark		
1.Dhrystone ALU	MIPS	14506
Whetstone FPU iSSE2	FLOPS	12245
2.Int/Float Buffered iSSE2	MB/S	7102/6837
3.Integer/Floating-Point	IT/S	33475/41391
UT2003 Benchmark (flyby/botmatch)		175.667618/58.704014
Quake3 DEMO1 /DEMO2		FPS 376.6/365.8
DOOM 3		FPS N/A
Super Pi (1M)		Second 43.6211
CPUZ	System / CPU Clock	2.0GHz/200

1-4 Layout Diagram



Jumpers

Jumper	Name	Description	Page
JBAT	Clear CMOS RAM	3-pin Block	P.7
JP1	Keyboard/USB Power On Enabled/Disabled	3-pin Block	P.8

Connectors

Connector	Name	Description	Page
ATXPWR1	ATX Power Connector	24-pin Block	P.12
ATX12V1	ATX 12V Power Connector	8-pin Block	P.13
KB1	PS/2 Mouse & PS/2 Keyboard Connector	6-pin Female	P.13
USB from CN1,UL1	USB2.0 Port Connector	4-pin Connector	P.13
RJ45LAN from UL1	Gigabit LAN Port Connector	RJ-45 Connector	P.13
J1	CrossFire Power Connector	4-Pin Block	P.13
AUDIO : CN2	8-CH HD Audio Connector	6- phone jack Conn.	P.14
FDD1	Floppy Driver Connector	34-pin Block	P.14
IDE1	Primary/Secondary IDE Connector	40-pin Block	P.14
SATA1~SATA6	Serial ATAII Connectors	7-pin Connector	P.15
COM1	Serial Port Connector	9-pin Connector	P.15
SPDIF_OUT1	SPDIF Out coaxial Connectors	1- phone jack Conn.	P.15

Headers

Header	Name	Description	Page
AUDIO1	SPEAKER, MIC header	9-pin Block	P.15
USB1, USB2	USB Port Headers	9-pin Block	P.15
SPEAK1	PC Speaker connector	4-pin Block	P.16
PWR LED1/ PWR LED	Power LED	3-pin Block	P.16
JW_FP1 (Reset/HDLED/Power Button/PWR LED)	Front Panel Header (including IDE activity LED/Reset switch / Power On Button lead)	9-pin Block	P.16
SYSFAN1/2, CHAFAN	FAN Headers	3-pin Block	P.16
CPUFAN	FAN Header	4-pin Block	P.16
CDIN1	CD Audio-In Header	4-pin Block	P.17
IR	IR infrared module Headers	5-pin Block	P.17
HDMI-SPDIF	SPDIF Out header	2-pin Block	P.18
WI-FI1	Wi-Fi Header	11-pin Block	P.18

Expansion Sockets

Socket/Slot	Name	Description	Page
ZIF Socket AM2+	CPU Socket	940-pin mPGAB Athlon64 CPU Socket	P.9
DIMM1~4	DDRII Module Socket	240-pin DDRII Module Socket	P.10
PCI1~ PCI2	PCI Slots	32-bit PCI Local Bus Expansion slots	P.12
PE2	PCI-Express2.0 x1Slot	PCI-Express2.0 x1 Expansion Slots	P.12
PE1, PE3	PCI-Express2.0 x16 Slot	PCI-Express2.0 x16 Expansion Slots	P.12

Chapter 2

Hardware Installation

WARNING! Turn off your power when adding or removing expansion cards or other system components. Failure to do so may cause severe damage to both your motherboard and expansion cards.

2-1 Hardware installation Steps

Before using your computer, you had better complete the following steps:

1. Check motherboard jumper setting
2. Install CPU and Fan
3. Install System Memory (DIMM)
4. Install Expansion cards
5. Connect IDE and Front Panel /Back Panel cable
6. Connect ATX Power cable
7. Power-On and Load Standard Default
8. Reboot
9. Install Operating System
10. Install Driver and Utility

2-2 Checking Motherboard's Jumper Setting

(1) CMOS RAM Clear (3-pin): JBAT

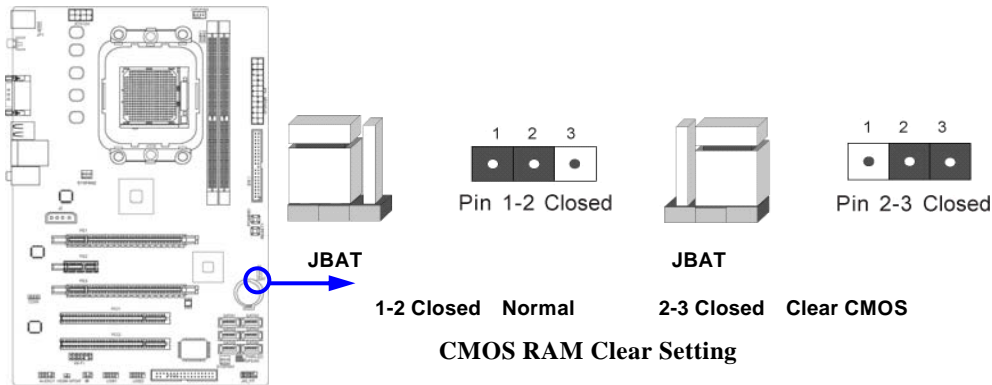
A battery must be used to retain the motherboard configuration in CMOS RAM short 1-2 pins of JBAT to store the CMOS data.

To clear the CMOS, follow the procedure below:

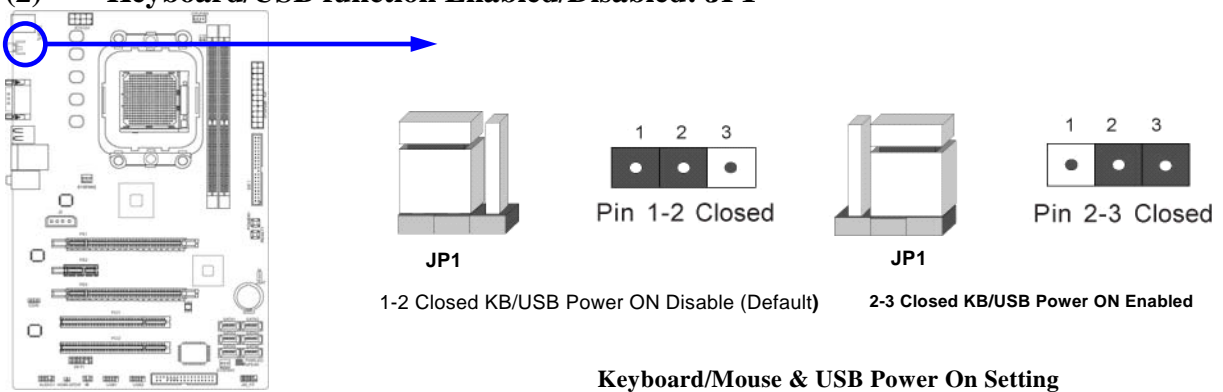
1. Turn off the system and unplug the AC power
2. Remove ATX power cable from ATX power connector
3. Locate JBAT and short pins 2-3 for a few seconds
4. Return JBAT to its normal setting by shorting pins 1-2
5. Connect ATX power cable back to ATX power connector

Note: When should clear CMOS

1. *Troubleshooting*
2. *Forget password*
3. *After over clocking system boot fail*



(2) Keyboard/USB function Enabled/Disabled: JP1



2-3 Install CPU

2-3-1 Glossary

Chipset (or core logic) - two or more integrated circuits which control the interfaces between the system processor, RAM, I/O devices, and adapter cards.

Processor slot/socket - the slot or socket used to mount the system processor on the motherboard.

Slot (PCI-E, PCI, RAM) - the slots used to mount adapter cards and system RAM.

PCI - Peripheral Component Interconnect - a high speed interface for video cards, sound cards, network interface cards, and modems; runs at 33MHz.

PCI Express- Peripheral Component Interconnect Express- a high speed interface for video cards, sound cards, network interface cards, and modems.

PCI Express2.0- Peripheral Component Interconnect Express2.0, developed in 2003, the speed of each line doubled from the previous PCI-E of 2.5Gbps to 5 Gbps.

Serial Port - a low speed interface typically used for mouse and external modems.

Parallel Port - a low speed interface typically used for printers.

PS/2 - a low speed interface used for mouse and keyboards.

USB - Universal Serial Bus - a medium speed interface typically used for mouse, keyboards, scanners, and some digital cameras.

Sound (interface) - the interface between the sound card or integrated sound connectors and speakers, MIC, game controllers, and MIDI sound devices.

LAN (interface) - Local Area Network - the interface to your local area network.

BIOS (Basic Input/Output System) - the program logic used to boot up a computer and establish the relationship between the various components.

Driver - software, which defines the characteristics of a device for use by another device or other software.

Processor - the "central processing unit" (CPU); the principal integrated circuit used for doing the "computing" in "personal computer"

Front Side Bus Frequency - the working frequency of the motherboard, which is generated by the clock generator for CPU, DRAM and PCI BUS.

CPU L2 Cache - the flash memory inside the CPU, normal it depend on CPU type.

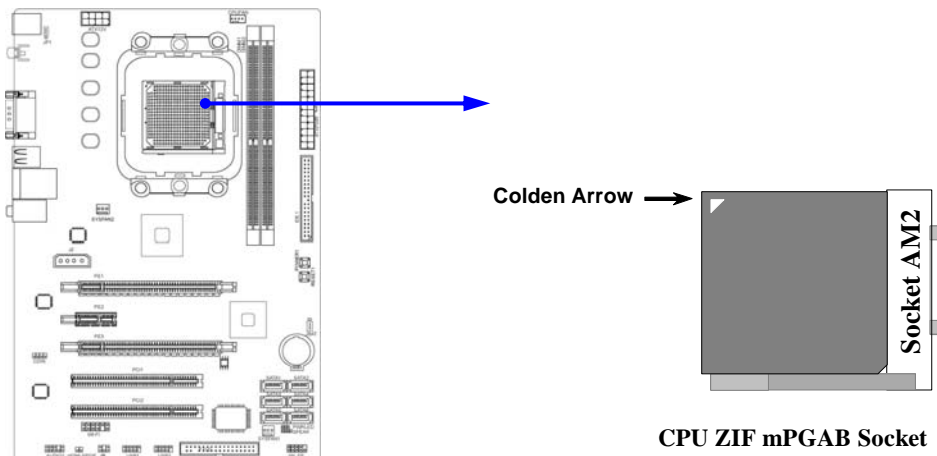
2-3-2 About AMD Athlon64 Socket AM2+ CPU

This motherboard provides a surface mount, Zero Insertion Force (ZIF) socket, referred to as the mPGA940 socket supports AMD Athlon64 processor in the package utilizes Flip-Chip Pin Grid Array package technology.

The CPU that comes with the motherboard should have a cooling FAN attached to prevent overheating. If this is not the case, then purchase a correct cooling FAN before you turn on your system.

WARNING! Be sure that there is sufficient air circulation across the processor's heatsink and CPU cooling FAN is working correctly, otherwise it may cause the processor and motherboard overheat and damage, you may install an auxiliary cooling FAN, if necessary.

To install a CPU, first turn off your system and remove its cover. Locate the ZIF socket and open it by first pulling the level sideways away from the socket then upward to a 90-degree angle. Insert the CPU with the correct orientation as shown below. The notched corner should point toward the end of the level. Because the CPU has a corner pin for two of the four corners, the CPU will only fit in the orientation as shown.



When you put the CPU into the ZIF socket, No force required to insert of the CPU, and then press the level to locate position slightly without any extra force.

2-4 Install Memory

This motherboard provides two 240-pin DDR2 DUAL INLINE MEMORY MODULES (DIMM) socket for DDR2 memory expansion available from minimum memory volume of 128MB to maximum memory volume of 4 GB DDR SDRAM.

Valid Memory Configurations

Bank	240-Pin DIMM	PCS	Total Memory
Bank 0, 1 (DIMM1)	DDR2 533/DDR2 667/DDR2 800/DDR21066	X1	128MB~2 GB
Bank 2, 3 (DIMM2)	DDR2 533/DDR2 667/DDR2 800/DDR21066	X1	128MB~2 GB
Total	System Memory (Max 4 GB)	2	128MB~4 GB

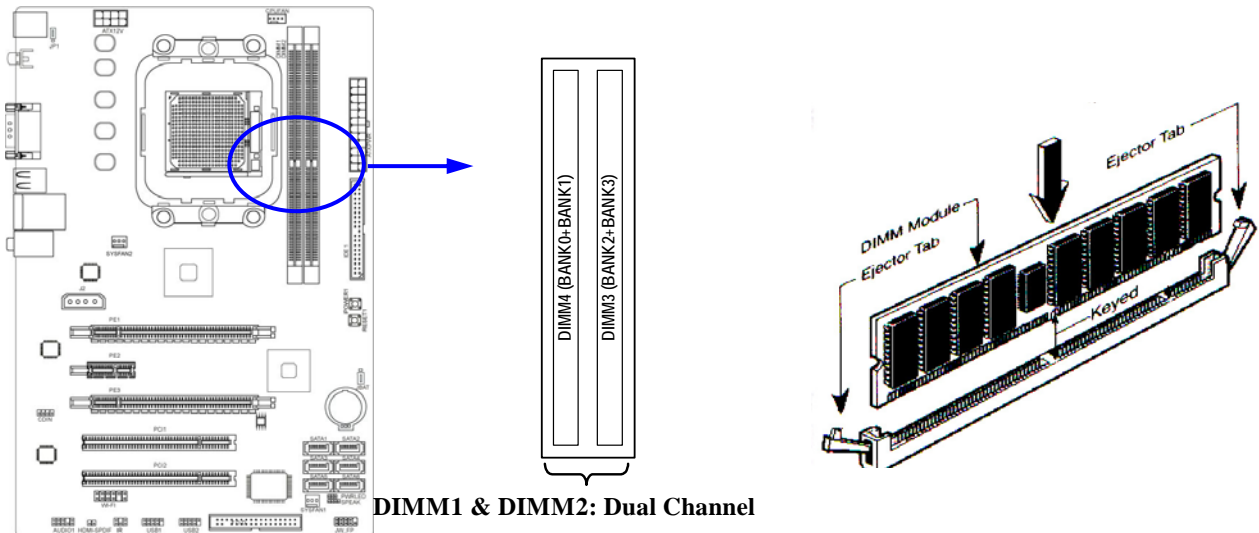
Recommend DIMM Module Combination

1. One DIMM Module ----Plug in DIMM1
2. Two DIMM Modules---Plug in DIMM1 and DIMM2 for Dual channel function

Dual channel Limited!

1. Dual channel function only supports when 2 DIMM Modules plug in both DIMM1 & DIMM2/
2. Memory modules plugged in DIMM1 & DIMM2 must be of the same type, same size, and same frequency for dual channel function.

Install DDR II modules to your motherboard is not difficult, you can refer to figure below to see how to install a 240-Pin DDR2 667/DDR2 800/DDR2 1066 module.



NOTE!

When you install DIMM module fully into the DIMM socket the eject tab should be locked into the DIMM module very firmly and fit into its indentation on both sides.

2-5 Expansion Cards

2-5-1 Procedure For Expansion Card Installation

1. Read the documentation for your expansion card and make any necessary hardware or software setting for your expansion card such as jumpers.
2. Remove your computer's cover and the bracket plate on the slot you intend to use.
3. Align the card's connectors and press firmly.
4. Secure the card on the slot with the screen you remove above.
5. Replace the computer system's cover.
6. Set up the BIOS if necessary.
7. Install the necessary software driver for your expansion card.

2-5-2 Assigning IRQs For Expansion Card

Some expansion cards need an IRQ to operate. Generally, an IRQ must exclusively assign to one use. In a standard design, there are 16 IRQs available but most of them are already in use.

Standard Interrupt Assignments

IRQ	Priority	Standard function
0	N/A	System Timer
1	N/A	Keyboard Controller
2	N/A	Programmable Interrupt
3 *	8	Communications Port (COM2)
4 *	9	Communications Port (COM1)
5 *	6	Sound Card (sometimes LPT2)
6 *	11	Floppy Disk Controller
7 *	7	Printer Port (LPT1)
8	N/A	System CMOS/Real Time Clock
9 *	10	ACPI Mode when enabled
10 *	3	IRQ Holder for PCI Steering
11 *	2	IRQ Holder for PCI Steering
12 *	4	PS/2 Compatible Mouse Port
13	N/A	Numeric Data Processor
14 *	5	Primary IDE Channel
15 *	1	Secondary IDE Channel

* These IRQs are usually available for ISA or PCI devices.

2-5-3 Interrupt Request Table For This Motherboard

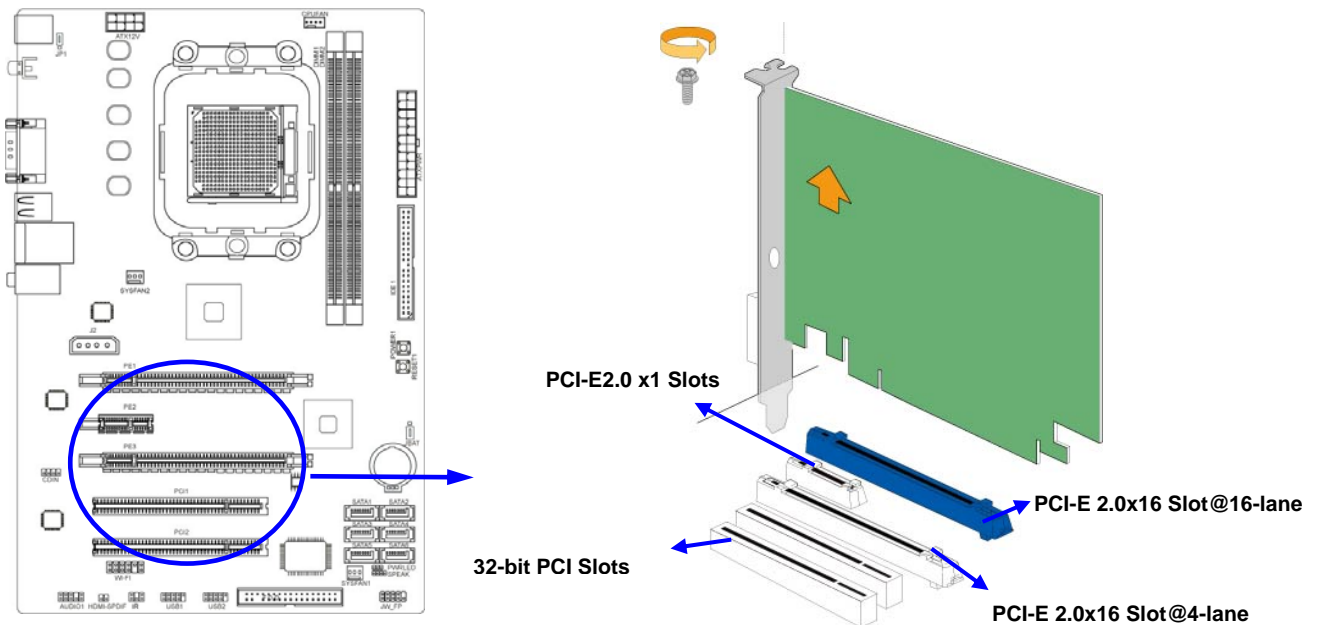
Interrupt request are shared as shown the table below:

	INT A	INT B	INT C	INT D	INT E	INT F	INT G	INT H
Slot 1		√						
Slot 2			√					
Slot 3				√				
Onboard USB 3			√					
HD Audio/MC97			√					

IMPORTANT! If using PCI cards on shared slots, make sure that the drivers support "Shared IRQ" or that the cards don't need IRQ assignments. Conflicts will arise between the two PCI groups that will make the system unstable or cards inoperable.

2-5-4 PCI Express 2.0 Slot

AMD 770 series motherboard series offer two PCI-Express2.0 x16 lane graphics slots. One PCI-Express2.0 x16@ 16 lane slot delivers up to 8 Gbyte/sec data transfer rate at each relative direction and up to 16 Gbyte/sec concurrently while the other PCI Express 2.0@ 4 lane delivers 4Gbyte/sec concurrently. This high bandwidth architecture in the AMD 770 chipset is combined with the flexibility for single or dual card configurations. One PCI Express2.0 x1 I/O slot offers 1 Gbyte/sec concurrently, over 7 times more bandwidth than PCI at 133Mbyte/sec, tackling the most demanding multimedia tasks nowadays. The AMD 770 motherboards also carry two 32-bit PCI slots guarantee the rich connectivity for the I/O peripheral devices.



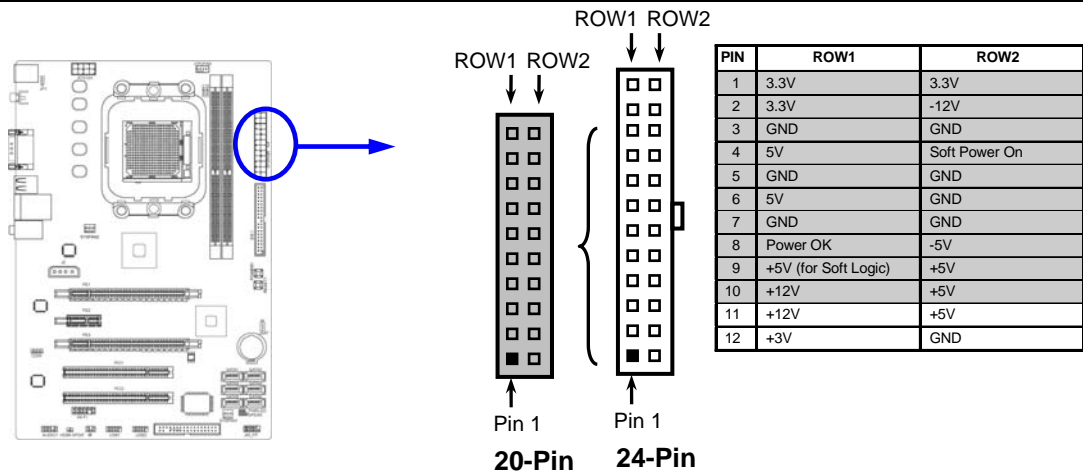
2-6 Connectors, Headers

2-6-1 Connectors

(1) Power Connector (24-pin block) : ATXPWR1

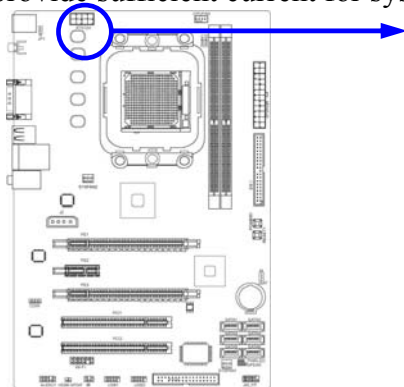
ATX Power Supply connector: This is a new defined 24-pins connector that usually comes with ATX case. The ATX Power Supply allows using soft power on momentary switch that connect from the front panel switch to 2-pins Power On jumper pole on the motherboard. When the power switch on the back of the ATX power supply turned on, the full power will not come into the system board until the front panel switch is momentarily pressed. Press this switch again will turn off the power to the system board.

- ** We recommend that you use an ATX 12V Specification 2.0-compliant power supply unit (PSU) with a minimum of 350W power rating. This type has 24-pin and 4-pin power plugs.
- ** If you intend to use a PSU with 20-pin and 4-pin power plugs, make sure that the 20-pin power plug can provide at least 15A on +12V and the power supply unit has a minimum power rating of 350W. The system may become unstable or may not boot up if the power is inadequate.



(2) ATX 12V Power Connector (8-pin block) : ATX12V1

This is a new defined 8-pins connector that usually comes with ATX Power Supply. The ATX Power Supply which fully supports Socket AM2+ processor must including this connector for support extra 12V voltage to maintain system power consumption. Without this connector might cause system unstable because the power supply can not provide sufficient current for system.



(3) PS/2 Mouse & PS/2 Keyboard Connector: KB1

The connectors are for PS/2 keyboard and PS/2 Mouse.

(4) USB Port connector: USB from CN1, UL1

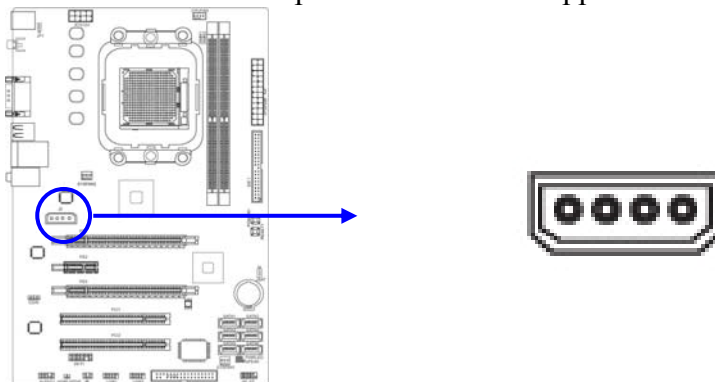
The connectors are 4-pin connector that connects USB devices to the system board.

(5) LAN Port connector: RJ45 LAN from UL1

This connector is standard RJ45 connector for Network. It supports 10M/100Mb/1000Mb s data transfer rate

(6) Large 4-Pin Power Connector: J1 Power Connector

The connectors are 4-pin connector that supports extra 12V / 5V power to your system



(7) Audio Line-In, Lin-Out, MIC: Audio from CN2

These Connectors are 3 Phone-Jack for LINE-OUT, LINE-IN, MIC audio connections.

Line-in : (BLUE)

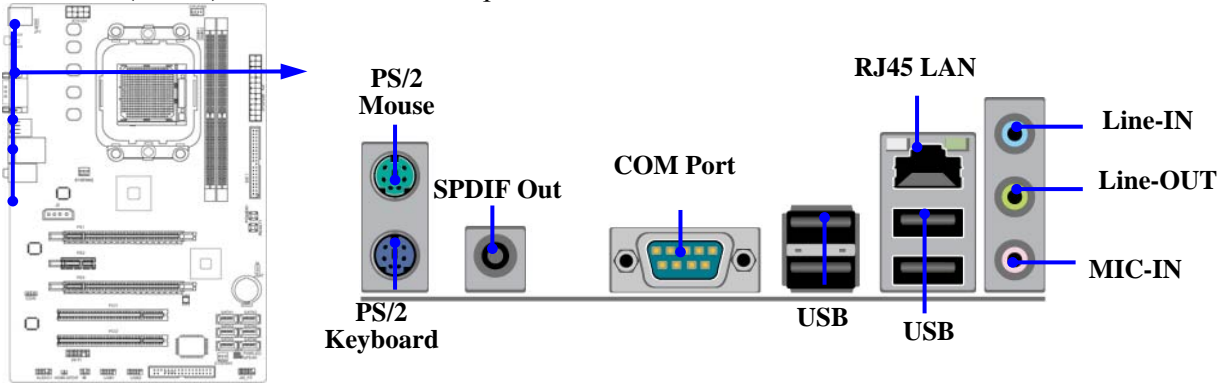
Audio input to sound chip

Line-out : (GREEN)

Audio output to speaker

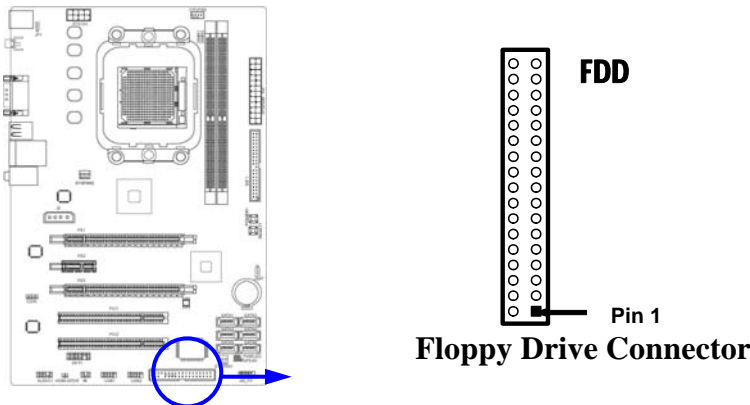
MIC : (PINK)

Microphone Connector



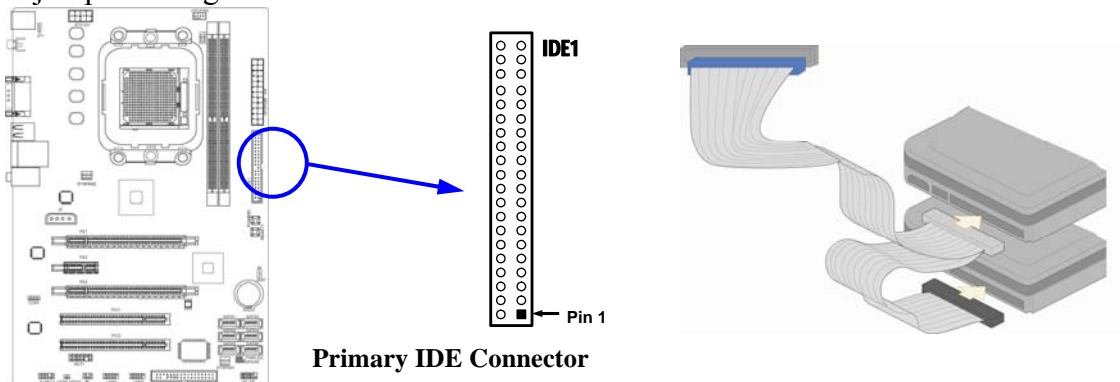
(8) Floppy drive Connector (34-pin block): FDD1

This connector supports the provided floppy drive ribbon cable. After connecting the single plug end to motherboard, connect the two plugs at other end to the floppy drives.



(9) Primary IDE Connector (40-pin block): IDE1

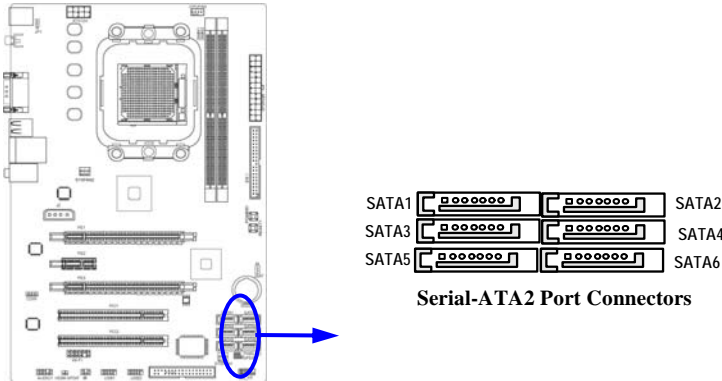
This connector supports the provided IDE hard disk ribbon cable. After connecting the single plug end to motherboard, connect the two plugs at other end to your hard disk(s). If you install two hard disks, you must configure the second drive to Slave mode by setting its jumpers accordingly. Please refer to the documentation of your hard disk for the jumper settings.



- Two hard disks can be connected to each connector. The first HDD is referred to as the “Master” and the second HDD is referred to as the “Slave”.
- For performance issues, we strongly suggest you don’t install a CD-ROM or DVD-ROM drive on the same IDE channel as a hard disk. Otherwise, the system performance on this channel may drop.

(10) Serial-ATAII Port connector: SATA 1, SATA 2, SATA 3, SATA 4, SATA 5, SATA 6

These connectors support the provided Serial ATA2 hard disk cables to connecting the motherboard with serial ATAII hard disks.



(11) Serial Port:COM1

COM1 is a 9-pin RS232 serial port connector.

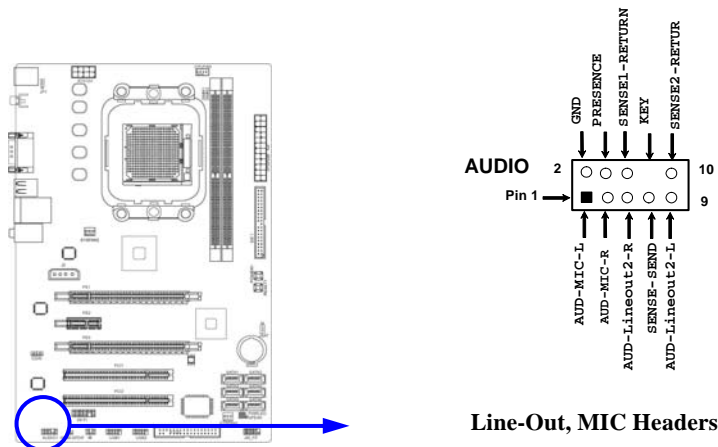
(12) SPDIF Out header: SPDIF_OUT1

The SPDIF output is capable of providing digital audio to external speakers or compressed AC3 data to an external Dolby digital decoder. Use this feature only when your stereo system has digital input function.

2-6-2 Headers

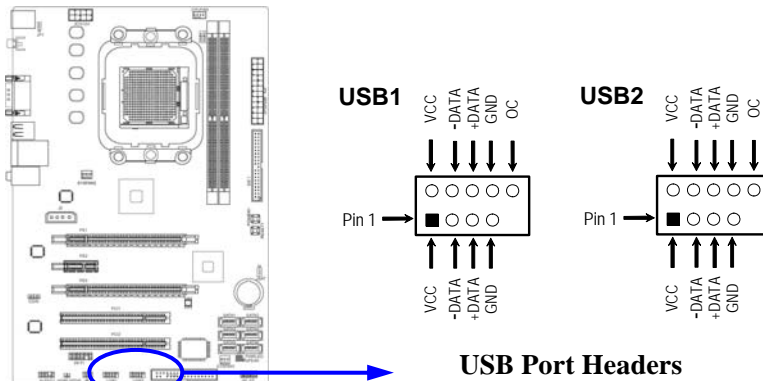
(1) Line-Out/MIC Header for Front Panel (9-pin): AUDIO1

These headers connect to Front Panel Line-out, MIC connector with cable.



(2) USB Port Headers (9-pin): USB1/USB2

These headers are used for connecting the additional USB port plug. By attaching an option USB cable, your can be provided with two additional USB plugs affixed to the back panel.



(3) Speaker connector: SPEAK1

This 4-pin connector connects to the case-mounted speaker. See the figure below.

(4) Power LED: PWR LED1/ PWR LED

The Power LED is light on while the system power is on. Connect the Power LED from the system case to this pin.

(5) IDE Activity LED: HD LED

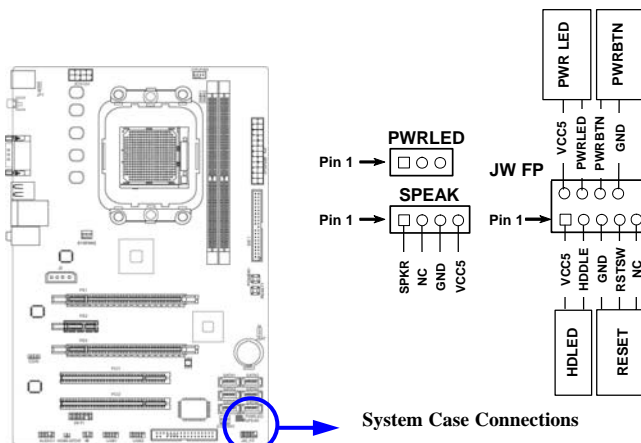
This connector connects to the hard disk activity indicator light on the case.

(6) Reset switch lead: RESET

This 2-pin connector connects to the case-mounted reset switch for rebooting your computer without having to turn off your power switch. This is a preferred method of rebooting in order to prolong the life of the system's power supply. See the figure below.

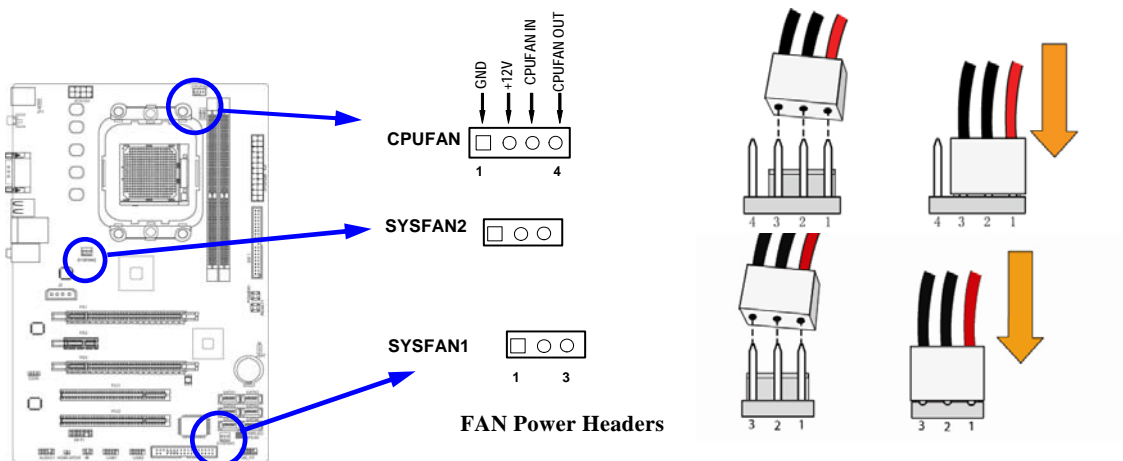
(7) Power switch: PWR BTN

This 2-pin connector connects to the case-mounted power switch to power ON/OFF the system.



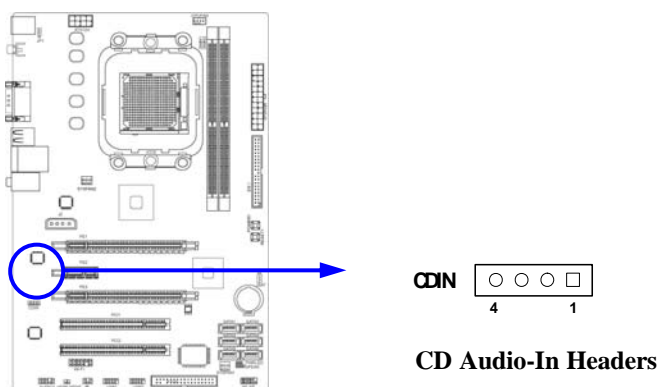
(8) FAN Power Headers: SYSFAN1/SYSFAN2 (3-pin), CPUFAN (4-pin)

These connectors support cooling fans of 350mA (4.2 Watts) or less, depending on the fan manufacturer, the wire and plug may be different. The red wire should be positive, while the black should be ground. Connect the fan's plug to the board taking into consideration the polarity of connector.



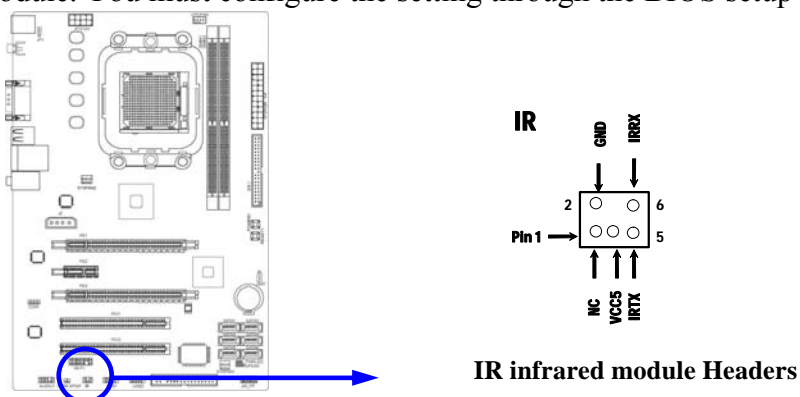
(9) CD Audio-In Headers (4-pin): CDIN1

CDIN are the connectors for CD-Audio Input signal. Please connect it to CD-ROM CD-Audio output connector.



(10) IR infrared module Headers (5-pin): IR

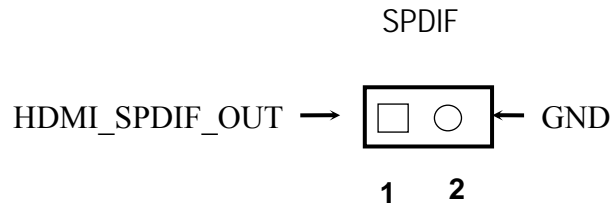
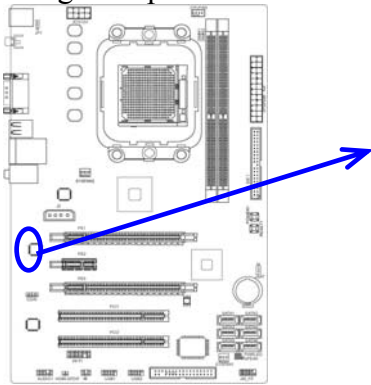
This connector supports the optional wireless transmitting and receiving infrared module. You must configure the setting through the BIOS setup to use the IR function.



(11) HDMI-SPDIF Out header: HDMI_SPDIF

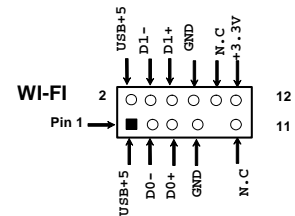
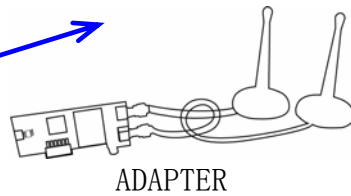
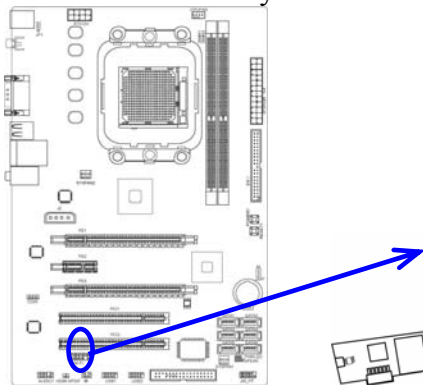
The SPDIF output is capable of providing digital audio to external speakers or compressed

AC3 data to an external Dolby digital decoder. Use this feature only when your stereo system has digital input function.



(12) WI-FI Header: WI-FI

This header supports WI-FI Function. Connect the wireless local area network adapter to this header. It allows you to create a wireless environment and enjoy the convenience of wireless network connectivity.



WI-FI Headers

2-7 Starting Up Your Computer

1. After all connection are made, close your computer case cover.
2. Be sure all the switch are off, and check that the power supply input voltage is set to proper position, usually in-put voltage is 220V~240V or 110V~120V depending on your country's voltage used.
3. Connect the power supply cord into the power supply located on the back of your system case according to your system user's manual.
4. Turn on your peripheral as following order:
 - a. Your monitor.
 - b. Other external peripheral (Printer, Scanner, External Modem etc...)
 - c. Your system power. For ATX power supplies, you need to turn on the power supply and press the ATX power switch on the front side of the case.
5. The power LED on the front panel of the system case will light. The LED on the monitor may light up or switch between orange and green after the system is on. If it complies with green standards or if it is has a power standby feature. The system will then run power-on test. While the test is running, the BIOS will alarm beeps or additional message will appear on the screen.

If you do not see any thing within 30 seconds from the time you turn on the power. The system may have failed on power-on test. Recheck your jumper settings and connections or call your retailer for assistance.

Beep	Meaning
One short beep when displaying logo	No error during POST
Long beeps in an endless loop	No DRAM install or detected
One long beep followed by three short beeps	Video card not found or video card memory bad
High frequency beeps when system is working	CPU overheated System running at a lower frequency

6. During power-on, press <Delete> key to enter BIOS setup. Follow the instructions in BIOS SETUP.
7. **Power off your computer:** You must first exit or shut down your operating system before switch off the power switch. For ATX power supply, you can press ATX power switching after exiting or shutting down your operating system. If you use Windows 9X, click "**Start**" button, click "**Shut down**" and then click "**Shut down the computer?**" The power supply should turn off after windows shut down.

Chapter 3

Introducing BIOS

The BIOS is a program located on a Flash Memory on the motherboard. This program is a bridge between motherboard and operating system. When you start the computer, the BIOS program will gain control. The BIOS first operates an auto-diagnostic test called POST (power on self test) for all the necessary hardware, it detects the entire hardware device and configures the parameters of the hardware synchronization. Only when these tasks are completed done it gives up control of the computer to operating system (OS). Since the BIOS is the only channel for hardware and software to communicate, it is the key factor for system stability, and in ensuring that your system performance as its best.

In the BIOS Setup main menu of Figure 3-1, you can see several options. We will explain these options step by step in the following pages of this chapter, but let us first see a short description of the function keys you may use here:

- Press <Esc> to quit the BIOS Setup.
- Press ↑↓←→ (up, down, left, right) to choose, in the main menu, the option you want to confirm or to modify.
- Press <F10> when you have completed the setup of BIOS parameters to save these parameters and to exit the BIOS Setup menu.
- Press Page Up/Page Down or +/- keys when you want to modify the BIOS parameters for the active option.

3-1 Entering Setup

Power on the computer and by pressing immediately allows you to enter Setup.

If the message disappears before your respond and you still wish to enter Setup, restart the system to try again by turning it OFF then ON or pressing the “RESET” button on the system case. You may also restart by simultaneously pressing <Ctrl>, <Alt> and <Delete> keys. If you do not press the keys at the correct time and the system does not boot, an error message will be displayed and you will again be asked to

Press <F1> to continue, <Ctrl-Alt-Esc> or to enter Setup

3-2 Getting Help

Main Menu

The on-line description of the highlighted setup function is displayed at the bottom of the screen.

Status Page Setup Menu/Option Page Setup Menu

Press F1 to pop up a small help window that describes the appropriate keys to use and the possible selections for the highlighted item. To exit the Help Window, press <Esc>.

3-3 The Main Menu

Once you enter Award® BIOS CMOS Setup Utility, the Main Menu (Figure 3-1) will appear on the screen. The Main Menu allows you to select from fourteen setup functions and two exit choices. Use arrow keys to select among the items and press <Enter> to accept or enter the sub-menu.

Phoenix - AwardBIOS CMOS Setup Utility

Standard CMOS Features	Thermal Throttling Option
Advanced BIOS Features	Power User Overclock Settings
Advanced Chipset Features	Password Settings
Integrated Peripherals	Load Fail-Safe Defaults
Power Management Setup	Load Optimized Defaults
Miscellaneous Control	Save & Exit Setup
PC Health Status	Exit Without Saving
Esc : Quit F9 : Menu in BIOS ↑↓→← : Select Item	
F10 : Save & Exit Setup	

Figure 3-1

Standard CMOS Features

Use this Menu for basic system configurations.

Advanced BIOS Features

Use this menu to set the Advanced Features available on your system.

Advanced Chipset Features

Use this menu to change the values in the chipset registers and optimize your system's performance.

Integrated Peripherals

Use this menu to specify your settings for integrated peripherals.

Power Management Setup

Use this menu to specify your settings for power management.

Miscellaneous Control

Use this menu to specify your settings for **Miscellaneous Control**.

PC Health Status

This entry shows your PC health status.

Power User Overclock Settings

Use this menu to specify your settings (frequency, Voltage) for overclocking demand

CPU Thermal Throttling Setting

The selection is set for activating the active CPU Thermal Protection by flexible CPU loading adjustment in the arrange of temperature you define.

Load Fail-Safe Defaults

This menu uses a minimal performance setting, but the system would run in a stable way.

Load Optimized Defaults

Use this menu to load the BIOS default values these are setting for optimal performances system operations for performance use.

Password Settings

This entry for setting Supervisor password and User password

Save & Exit Setup

Save CMOS value changes to CMOS and exit setup.

Exit Without Saving

Abandon all CMOS value changes and exit setup.

3-4 Standard CMOS Features

The items in Standard CMOS Setup Menu are divided into several categories. Each category includes no, one or more than one setup items. Use the arrow keys to highlight the item and then use the <PgUp> or <PgDn> keys to select the value you want in each item.

Phoenix - AwardBIOS CMOS Setup Utility Standard CMOS Features

Date (mm.dd.yy)	Tue* Jan 1 * 2008	Item Help
Time (hh:mm:ss)	1 : 39 : 8	
> IDE Channel 0 Master	None	Menu Level > Change the day, month, year and century
> IDE Channel 0 Slave	None	
SATA Channel 5	None	
SATA Channel 6	None	
SATA Channel 1	None	
SATA Channel 2	None	
SATA Channel 3	None	
SATA Channel 4	None	
Driver A	1.44M, 3.5 in	
Halt on	All Errors	
Base Memory	640K	
Extended Memory	523264K	
Total Memory	524288K	
↑↓→← Move Enter:Select +/-/PU/PD:Value F10:Save ESC:Exit F1:General Help F5:Previous Values F6:Optimized Defaults F7:Standard Defaults		

Date

The date format is <day><month><date><year>.

Day Day of the week, from Sun to Sat, determined by BIOS. Read-only.

Month The month from Jan. through Dec.

Date The date from 1 to 31 can be keyed by numeric function keys.

Year The year depends on the year of the BIOS.

Time

The time format is <hour><minute><second>.

IDE Channel 0 Master / Channel 0 Slave

SATA Channel 1, 2, 3, 4

Press PgUp/<+> or PgDn/<-> to select Manual, None, Auto type. Note that the specifications of your drive must match with the drive table. The hard disk will not work properly if you enter improper information for this category. If the type of hard disk drives is not matched or listed, you can use Manual to define your own drive type manually.

If you select Manual, related information is asked to be entered to the following items. Enter the information directly from the keyboard. This information should be provided in the documentation from your hard disk vendor or the system manufacturer.

If the controller of HDD interface is SCSI, the selection shall be "None".

If the controller of HDD interface is CD-ROM, the selection shall be "None"

Access Mode The settings are Auto Normal, Large, and LBA.

Cylinder number of cylinders

Head number of heads

Precomp write precomp

Landing Zone landing zone

Sector number of sectors

3-5 Advanced BIOS Features

Phoenix - AwardBIOS CMOS Setup Utility

Advanced BIOS Features

Hard Disk Boot Priority	Press Enter	Item Help
CPU Feature	Press Enter	
Virus Warning	Disabled	Menu Level >
CPU Internal Cache	Enabled	
External Cache	Enabled	
Quick Power on Self Test	Enabled	
First Boot Device	Hard Disk	
Second Boot Device	CDROM	
Third Boot Device	Floppy	
Boot other Device	Enabled	
Boot Up Floppy Seek	Enabled	
Boot Up NumLock Status	On	
Gate A20 Option	Fast	
Typematic Rate Setting	Disabled	
Typematic Rate (Chars/Sec)	6	
Typematic Delay (Msec)	250	
Security Option	Setup	
APIC Mode	Enabled	
MPS Version Control For OS	1.4	
OS Select For DRAM > 64MB	Non-OS2	
HDD S.M.A.R.T. Capability	Disabled	
Small LOGO(EPA) Show	Enabled	
↑↓→← Move Enter:Select +/-/PU/PD:Value F10:Save ESC:Exit F1:General Help F5:Previous Values F6:Optimized Defaults F7:Standard Defaults		

Hard Disk Boot Priority

The selection is for you to choose the hard disk drives priorities to boot from.

Virus Warning

The selection Allow you to choose the VIRUS Warning feature for IDE Hard Disk boot sector protection. If this function is enabled and someone attempt to write data into this area, BIOS will show a warning message on screen and alarm beep.

Disabled (default) No warning message to appear when anything attempts to access the boot sector or hard disk partition table.

Enabled Activates automatically when the system boots up causing a warning message to appear when anything attempts to access the boot sector of hard disk partition table.

CPU Internal Cache

The default value is Enabled.

Enabled (default) Enable cache

Disabled Disable cache

Note: The internal cache is built in the processor.

External Cache

Choose Enabled or Disabled. This option enables the Level 2 cache memory.

Quick Power On Self-Test

This category speeds up Power On Self Test (POST) after you power on the computer. If this is set to Enabled, BIOS will shorten or skip some check items during POST.

Enabled (default) Enable quick POST

Disabled Normal POST

First/Second/Third/Fourth Boot Device

The BIOS attempts to load the operating system from the devices in the sequence selected in these items. The settings are Floppy, LS120, HDD, CDROM, ZIP100, USB-CDROM, Legacy LAN, and Disabled.

Boot Up Floppy Seek

During POST, BIOS will determine if the floppy disk drive installed is 40 or 80 tracks. 360K type is 40 tracks while 760K, 1.2M and 1.44M are all 80 tracks.

Boot Up NumLock Status

The default value is On.

On (default) Keypad is numeric keys.

Off Keypad is arrow keys.

Gate A20 Option

Normal The A20 signal is controlled by keyboard controller or chipset hardware.

Fast (default) The A20 signal is controlled by port 92 or chipset specific method.

Typematic Rate Setting

Keystrokes repeat at a rate determined by the keyboard controller. When enabled, the typematic rate and typematic delay can be selected. The settings are: Enabled/Disabled.

Typematic Rate (Chars/Sec)

Sets the number of times a second to repeat a keystroke when you hold the key down. The settings are: 6, 8, 10, 12, 15, 20, 24, and 30.

Typematic Delay (Msec)

Sets the delay time after the key is held down before beginning to repeat the keystroke. The settings are 250, 500, 750, and 1000.

Security Option

This category allows you to limit access to the system and Setup, or just to Setup.

- System** The system will not boot and access to Setup will be denied if the correct password is not entered at the prompt.
- Setup (default)** The system will boot, but access to Setup will be denied if the correct password is not entered prompt.

HDD S.M.A.R.T Capability

This option allow you to enable the HDD S.M.A.R.T Capability (Self-Monitoring, Analysis and Reporting Technology). You can choose from Enabled and Disabled.

MPS Version Control For OS 1.4

This option is only valid for multiprocessor motherboards as it specifies the version of the Multiprocessor Specification (MPS) that the motherboard will use.

OS Select For DRAM > 64MB

Allows OS2[®] to be used with >64MB or DRAM. Settings are Non-OS/2 (default) and OS2. Set to OS/2 if using more than 64MB and running OS/2[®].

3-5-1 CPU Features

Phoenix - AwardBIOS CMOS Setup Utility

CPU Feature

Vietualization	Press Enter	Item Help
AMD K8 Cool & Quiet Control	Auto	
TLB Check	Enabled	Menu Level >
↑↓→← Move Enter:Select +/-/PU/PD:Value F10:Save ESC:Exit F1:General Help F5:Previous Values F6:Optimized Defaults F7:Standard Defaults		

3-6 Advanced Chipset Features

The Advanced Chipset Features Setup option is used to change the values of the chipset registers. These registers control most of the system options in the computer.

Phoenix - AwardBIOS CMOS Setup Utility

Advanced Chipset Features

DRAM Configuration	Press Enter	Item Help
HT Link Control	Press Enter	
PCIE Configuration	press enter	Menu Level >
Memory Hole	Disabled	
System BIOS Cacheable	Disabled	
↑↓→← Move Enter:Select +/-/PU/PD:Value F10:Save ESC:Exit F1:General Help F5:Previous Values F6:Optimized Defaults F7:Standard Defaults		

System BIOS Cacheable

Selecting Enabled allows caching of the system BIOS ROM at F0000h-FFFFFh, resulting in better system performance. However, if any program writes to this memory area, a system error may result. The settings are: Enabled and Disabled.

3-6-1 DRAM Configurations

Phoenix - AwardBIOS CMOS Setup Utility

DRAM Configuration

DRAM Latency(tcl)	Auto	Item Help	
RAS to CAS R/W Delay (Trtc)	Auto		
Row precharge Time(Trp)	Auto		
Minimum RAS Active Time(Tras)	Auto		
DRAM Command Rate	2T		
CKE base Power dowe mode	Disabled		
CKE Based Powerdown	per channel		
Memclock tri-slating	Disabled		
Memclock Hole Remapping	Enabled		
DDRII Timing Item	Disabled		
RAS Cycle Time (Trc)	26 bus clocks		
RAS to RAS Delay(Trrd)	5 clocks		
Precharge Time(Trtp)	3T or 5T		
Write Recovery Time(Twr)	6 bus clocks		
TwTr Command Delay	3 bus clock		
* Trfc 0 for DIMM1	75ns		
Trfc 1 for DIMM 2	75ns		
Trfc 2 for DIMM 3	75ns		
Trfc 2 for DIMM 4	75ns		
Auto optimize Bottom10	Enabled		Menu Level >>
Refresh Mode select	Auto		
Read to write Delay tRTW	Auto		
Read/Write Queue Bypass	Auto		
Queue Bypass Max	Auto		
Max Asynchronous Latency	Auto		
Read Delay Trd	Auto		
↑↓← Move Enter:Select +/-/PU/PD:Value F10:Save ESC:Exit F1:General Help F5:Previous Values F6:Optimized Defaults F7:Standard Defaults			

RAS TO cas R/W Delay

The settings are: Auto,3T, 4T,5T and 6T.

RAS-to-CAS Delay

This field let's you insert a timing delay between the CAS and RAS strobe signals, used when DRAM is written to, read from, or refreshed. *Fast* gives faster performance; and *Slow* gives more stable performance. This field applies only when synchronous DRAM is installed in the system.

Row Precharge Time

If an insufficient number of cycles is allowed for the RAS to accumulate its charge before DRAM refresh, the refresh may be incomplete and the DRAM may fail to retain date. *Fast* gives faster performance; and *Slow* gives more stable performance. This field applies only when synchronous DRAM is installed in the system. The settings are: Auto,3T, 4T,5T and 6T.

3-6-2 HT Link Control

Phoenix - AwardBIOS CMOS Setup Utility

HT Link Control

HT Link Width	Auto	Item Help
HT LinkFrquency	Auto	
IH Flow-Control Mold	Disable	Menu Level >
HT Link Trislate	Disabled	
2X Lclk Mold	Disabled	
↑↓→← Move Enter:Select +/-/PU/PD:Value F10:Save ESC:Exit F1:General Help F5:Previous Values F6:Optimized Defaults F7:Standard Defaults		

HT Link Width

The optional settings are :Auto, 8 Bit, and 16 Bit.

HT Link Frequency

The optional settings are: Auto, 200MHz, 4000MHz, 600 MHz and 800Mhz.

IH Flow-Control Mode:

Isochronous (ISOC) Flow Control Mode enable will make the HT Link communication have the complex ordering rules for Isochronous source to make sure it can get service from the system with deterministic worst-case latency. However, the latency time cost of ISOC flow control mode is an important consideration. Normal flow control mode will be a simpler solution for most system.

HT Link Tristate:

Disabled mode will make the link transmitter is driven but in and under fined state during the disconnect sequence. And the PHY (transmitter) is placed in LS0. LS0 state keeps all lanes active to maintain DLL and phase recovery lock.

Enabled mode will make the link transmitter is placed into high impedance states during the disconnect sequence. And the PHY (transmitter) is placed in LS1, LS2 or LS3. LS1, LS2 and LS3 are each states that shut down parts of the PHY to save power.

LS1 state: CLK running, CAD/CTL sending TxIdle.

LS2 state: CLK/CAD/CTL sending TxIdle.

LS3 state: CLK/CAD/CTL sending either HiZ or TxGndTrm.

3-6-3 PCIE Configuration

Phoenix - AwardBIOS CMOS Setup Utility

PCIE Configuration

P2p h/w Primary/Secondary	Disabled	Item Help
GFX Port 1	Press Enter	
GFX Port 2	Press Enter	Menu Level >
GPP-PE2	Press Enter	
GPP-PE3	Press Enter	
GPP-PCIELAN	Press Enter	
NB-SB Port Features	Press Enter	
↑↓→← Move Enter:Select +/-/PU/PD:Value F10:Save ESC:Exit F1:General Help F5:Previous Values F6:Optimized Defaults F7:Standard Defaults		

GFX Port 1

Use this item to set PCI E Gen2 High Speed Mold, Link ASPM and Link Width .

GPP-PE3/ GPP-PCIELAN/GPP-PE2

Use this item to set PCI E Gen2 High Speed Mold and Link ASPM.

NB-SB Port Features

Use this item to set Link ASPM, Link Width, VC1 Traffic Support.

3-7 Integrated Peripherals

Phoenix - AwardBIOS CMOS Setup Utility
Integrated Peripherals

CMIX-SB700 Revision	2.5.0	Item Help
Superio Function Setup	Press Enter	Menu Level >
onchip IDE Device	Press Enter	
Onchip SATA Device	Press Enter	
Onchip PCI Device	Press Enter	
↑↓→← Move Enter: Select +/-/PU/PD: Value F10:Save ESC: Exit F1:General Help F5:Previous Values F6:Optimized Defaults F7:Standard Defaults		

Super IO Device

Please refer to section 3-7-1

OnChip IDE Device

Please refer to section 3-7-2

OnChip SATA Device

Please refer to section 3-7-3

OnChip PCI Device

Please refer to section 3-7-4

3-7-1 Super IO Device

Phoenix - AwardBIOS CMOS Setup Utility
Super IO Function Setup

Power On By Keyboard	Disabled	Item Help
Power On By Mouse	Disabled	Menu Level >>
Onboard FDC Controller	Enabled	
Onboard Serial Port 1	3F8/IRQ4	
UART Mode Select	IrDA	
* IRDA Duplex Mode	Half	
Onboard parallel port	378/IRQ7	
Parallel port Mode	SPP	
ECP Mode USE DMA	3	
PWROM After PWR-Fail	Always Off	
↑↓→← Move Enter:Select +/-/PU/PD:Value F10:Save ESC:Exit F1:General Help F5:Previous Values F6:Optimized Defaults F7:Standard Defaults		

Onboard FDC Controller

Select Enabled if your system has a floppy disk controller (FDD) installed on the system board and you wish to use it. If you install add-on FDC or the system has no floppy drive, select Disabled in this field. The settings are: Enabled and Disabled.

Onboard Serial Port1

Select an address and corresponding interrupt for the first and the second serial ports. The settings are: 3F8/IRQ4, 2E8/IRQ3, 3E8/IRQ4, 2F8/IRQ3, Disabled, Auto.

UART Mode Select

This item allows you to determine which InfraRed(IR) function of the onboard I/O chip, this functions uses.

IrDA Duplex Mode

This field is available when UART Mode is set to either ASKIR or IrDA. This item enables you to determine the infrared function of the onboard infrared chip. The options are Full and

Half (default). Full-duplex means that you can transmit and send information simultaneously. Half-duplex is the transmission of data in both directions , but only one direction at a time.

Onboard Parallel Port

There is a built-in parallel port on the on-board Super I/O chipset that Provides Standard, ECP, and EPP features. It has the following option:

Disabled

(3BCH/IRQ7)/ Line Printer port 0

(278H/IRQ5)/ Line Printer port 2

(378H/IRQ7) Line Printer port 1

Parallel Port Mode

SPP : Standard Parallel Port

EPP : Enhanced Parallel Port

ECP : Extended Capability Port

SPP/EPP/ECP/ECP+EPP

To operate the onboard parallel port as Standard Parallel Port only, choose “SPP.” To operate the onboard parallel port in the EPP modes simultaneously, choose “EPP.” By choosing “ECP”, the onboard parallel port will operate in ECP mode only. Choosing “ECP+EPP” will allow the onboard parallel port to support both the ECP and EPP modes simultaneously. The ECP mode has to use the DMA channel, so choose the onboard parallel port with the ECP feature. After selecting it, the following message will appear: “ECP Mode Use DMA” at this time, the user can choose between DMA channels 3 to 1. The onboard parallel port is EPP Spec. compliant, so after the user chooses the onboard parallel port with the EPP function, the following message will be displayed on the screen: “EPP Mode Select.” At this time either EPP 1.7 spec. or EPP 1.9 spec. can be chosen.

Power on after Power Failure

This determines the manner when the power recovery after power failure. The setting are: Always Off, Former-Sts ,Always On.

3-7-2 Onchip IDE Function

Phoenix - AwardBIOS CMOS Setup Utility

OnChip IDE Function

IDE HDD Block Mode	Enabled	Item Help
IDE DMA transfer	Enabled	
Primary Master PIO	Auto	Menu Level >>
Primary Slave PIO	Auto	
Secondary Master PIO	Auto	
Secondary Slave PIO	Auto	
Primary Master UDMA	Auto	
Primary Slave UDMA	Auto	
Secondary Master UDMA	Auto	
Secondary Slave UDMA	Auto	
↑↓→← Move Enter:Select +/-/PU/PD:Value F10:Save ESC:Exit F1:General Help F5:Previous Values F6:Optimized Defaults F7:Standard Defaults		

Primary Secondary/ Master/Slave PIO

The two IDE PIO (Programmed Input/Output) fields let you set a PIO mode (0-2) for each of the two IDE devices that the onboard IDE interface supports. Modes 0 through 2 provide successively increased performance. In Auto mode, the system automatically determines the

best mode for each device. The settings are: Auto, Mode 0, Mode 1, Mode 2, Mode 3, Mode 4.

Primary /Secondary Master/Slave UDMA

Ultra DMA/33 implementation is possible only if your IDE hard drive supports it and the operating environment includes a DMA driver (Windows 95 OSR2 or a third-party IDE bus master driver). If your hard drive and your system software both support Ultra DMA/33 and Ultra DMA/66, select Auto to enable BIOS support. The settings are: Auto, Disabled.

3-7-3 Onchip SATA Function

Phoenix - AwardBIOS CMOS Setup Utility

OnChip SATA Device

Onchip SATA Channel	Enabled	Item Help	
Onchip SATA Type	Native IDE		
Combined Mold	Enabled	Menu Level >>	
PATA Channel Mapping	Primary		
SATA 5 bus Inteface	Enabled		
Aggressive Link PM	Enabled		
Port Multiplier	Enabled		
Slumber & Partial State	Enabled		
SATA Auto Clock Control	Disabled		
↑↓→← Move Enter:Select +/-/PU/PD:Value F10:Save ESC:Exit F1:General Help F5:Previous Values F6:Optimized Defaults F7:Standard Defaults			

Onchip SATA Mold

The optional settings are: Native IDE, raid, AHCI, Legacy IDE and IDE→AHCI.

Parallel Channel Mapping

The optional settings are: Primary, Secondary.

3-7-4 Onchip PCI Device

Phoenix - AwardBIOS CMOS Setup Utility

OnChip PCI Device

Onboard LAN Device	Enabled	Item Help
Onboard Lan BootRom	Disabled	
HD Audio	Enable	Menu Level >>
Onchip USB Controller	Enabled	
USB EHCI Controller	Enabled	
USB keyboard Support	Enabled	
USB printer compatibility	Enabled	
↑↓→← Move Enter:Select +/-/PU/PD:Value F10:Save ESC:Exit F1:General Help F5:Previous Values F6:Optimized Defaults F7:Standard Defaults		

Onboard LAN device

This option allows you to control the onboard LAN device.

HD Audio

This item allows you to decide to enable/disable the chipset family to support HD Audio. The settings are: Enabled, Disabled.

Onchip USB Controller

Select *Enabled* if your system contains a Universal Serial Bus (USB) controller and you have a USB peripherals. The settings are: Enabled, Disabled.

USB Device Support

Select *Enabled* if your system contains a Universal Serial Bus (USB) controller and you have a USB device. The settings are: Enabled, Disabled.

3-8 Power Management Setup

The Power Management Setup allows you to configure your system to most effectively save energy saving while operating in a manner consistent with your own style of computer use.

Phoenix - AwardBIOS CMOS Setup Utility

Power Management Setup

ACPI function	Enabled	Item Help	
ACPI Suspend Type	SI(POS)		
C2 Disabled /Enabled	Disabled	Menu Level >	
Power Management Option	User Define		
HDD Power Down	Disabled		
Video Off Option	suspend - off		
Video off Method	V/H SyNC + BLANK		
Modem Use IRQ	3		
Soft-OFF by PWRBTN	Instant off		
Power On by PCI Card	Disabled		
Modem Ring Resume	Disabled		
ACPI XSDT Table	Enabled		
HPET Support	Enabled		
RTC Alarm Resume	Disabled		
● Date of month	0		
● Resume Time <hh:mm:ss>	0:0:0		
↑↓←→ Move Enter:Select +/-/PU/PD:Value F10:Save ESC:Exit F1:General Help F5:Previous Values F6:Optimized Defaults F7:Standard Defaults			

ACPI Function

This item allows you to Enabled/Disabled the Advanced Configuration and Power Management (ACPI). The settings are Enabled and Disabled.

HDD Power Down (Disabled)

The IDE hard drive will spin down if it is not accessed within a specified length of time. Options are from 1 Min to 15 Min and Disable.

Video Off Method

This determines the manner in which the monitor is blanked.

DPMS (default) Initial display power management signaling.

Blank Screen This option only writes blanks to the video buffer.

V/H SYNC+Blank This selection will cause the system to turn off the vertical and horizontal synchronization ports and write blanks to the video buffer.

MODEM Use IRQ

If you want an incoming call on a modem to automatically resume the system from a power-saving mode, use this item to specify the interrupt request line (IRQ) that is used by the modem. You might have to connect the fax/modem to the motherboard Wake On Modem connector for this feature to work. The optional settings are: NA, 3, 4, 5, 7, 9, 10, 11.

Soft-Off by PWRBTN

Under ACPI (Advanced Configuration and Power management Interface) you can create a software power down. In a software power down, the system can be resumed by Wake up Alarms. This item lets you install a software power down that is controlled by the power Button on your system. If the item is set to Instant-Off, then the power button causes a software power down. If the item is set to Delay 4 Sec, then you have to hold the power button down for four seconds to cause a software power down.

RTC Alarm Resume

When set to Enabled, additional fields become available and you can set the date (day of the month), hour, minute and second to turn on your system. When set to 0 (zero) for the day of

the month, the alarm will power on your system every day at the specified time .

Date (of month)

You can choose which month the system will boot up. Set to 0, to boot every day.

Time (hh:mm:ss)

You can choose what hour, minute and second the system will boot up.

Note: If you have change the setting, you must let the system boot up until it goes to the operating system, before this function will work.

ACPI XSDT Table This table is for 64 Bits OS using, Don't use for win2k or winxp 32 bits Mode.

3-9 Miscellaneous Control

Phoenix - AwardBIOS CMOS Setup Utility

Miscellaneous Control

Init Display First	PCIEx	Item Help	
Reset Configuration Date	Disabled		
Resource Controlled by	Auto [ESCD]	Menu Level >	
* IRQ Resource	Press Enter		
PCI /VGA Palette SNOOP	Disabled		
Assign IRQ for VGA	Enabled		
Assign IRQ for USB	Enabled		
PCI Latency Timer (CLK)	[64]		
* PCI Express Relative Items			
Maximum Payload Size	4096		
↑↓→← Move Enter:Select +/-/PU/PD:Value F10:Save ESC:Exit F1:General Help F5:Previous Values F6:Optimized Defaults F7:Standard Defaults			

Reset Configuration Data

If you enable this item and restart the system, any Plug and Play configuration data stored in the BIOS Setup is cleared from memory.

Init Display First

Use this item to specify whether your graphics adapter is installed in one of the PCI E slots or is integrated on the motherboard. If a PCI E graphics card is installed, the onboard VGA will be disabled. The optional settings are: PCI Slot and PCIEx.

PCI/VGA Palette Snoop

This item is designed to overcome problems that can be caused by some non-standard VGA cards. This board includes a built-in VGA system that does not require palette snooping so you must leave this item disabled.

Assign IRQ For USB

Names the interrupt request (IRQ) line assigned to the USB on your system. Activity of the selected IRQ always awakens the system.

Resources Controlled By BIOS can automatically configure all the boot and plug and play compatible devices. If you choose Auto, you cannot select IRQ DMA and memory base address fields, since BIOS automatically assigns them.

3-10 PC Health Status

This section shows the Status of you CPU, Fan, and Warning for overall system status. This is only available if there is Hardware Monitor onboard.

Phoenix - AwardBIOS CMOS Setup Utility

PC Health Status

Show H/W Health in Post	Enabled	Item Help
Shutdown Temperature	Disabled	
Smart FAN Configuration	Press Enter	Menu Level >
VLDT	1.27V	
VDIMM	1.95V	
NBVCC	1.11V	
Vcore	1.35V	
CPU Temperature	46°C	
SYS Temperature	36°C	
CPUFAN	2525 RPM	
SYS FAN1	0 RPM	
SYS FAN2	0 RPM	
↑↓→← Move Enter:Select +/-/PU/PD:Value F10:Save ESC:Exit F1:General Help F5:Previous Values F6:Optimized Defaults F7:Standard Defaults		

Show PC Health in Post

During Enabled, it displays information list below. The choice is either Enabled or Disabled

Shutdown Temperature

This item can let users setting the Shutdown temperature, when CPU temperature over this setting the system will auto shutdown to protect CPU.

PS CPU Smart FAN Configurations

CPU Full-Speed Temp

This item allows you setting the FAN works in full speed when the temperature over the value which out set. If the temperature below the value but over the Idle Temperature, the FAN will works over 60% of full speed, and the higher temperature will gain higher FAN speed, after over the temperature which this item setting, the FAN works in full speed.

CPU Idle Temp

This item allows you setting the FAN works in 60% of full speed, when the temperature lower than the temperature which you setting.

CPU Temperature/ SYS Temperature /CPUFAN SYSFAN1, SYSFAN2 Speed/VLDT/VDIMM/Vcore/NBVCC

This will show the CPU/FAN/System voltage chart and FAN Speed.

3-11 Thermal Throttling Options

Phoenix - AwardBIOS CMOS Setup Utility

Thermal Throttling Options

CPU Thermal-Throttling	Disabled	Item Help	
CPU Thermal-Throttling Temp	70		
CPU Thermal-Throttling Duty	50%	Menu Level >	
↑↓→← Move Enter:Select +/-/PU/PD:Value F10:Save ESC:Exit F1:General Help F5:Previous Values F6:Optimized Defaults F7:Standard Defaults			

CPU Thermal Throttling Temp

This item is used to force CPU into idle state when CPU temperature is too high or CPU workload is too heavy.

3-11 Power User Overclock Setting

Phoenix - AwardBIOS CMOS Setup Utility

Power User Overclock Setting

Profile Load	Press Enter	Item Help
Profile Save	Press Enter	
CPU/HT Reference Clk	[200]	Menu Level >
PCIE Reference Clock	[100]	
SB Reference Clock	[100]	
Memory clock Mode	Auto	
*Memory clock Value	DDR533	
VDIMM Select	1.95 V	
NB Voltage Setting	Default	
↑↓→← Move Enter:Select +/-/PU/PD:Value F10:Save ESC:Exit F1:General Help F5:Previous Values F6:Optimized Defaults F7:Standard Defaults		

CPU/HT Reference Clock

Use this item to set CPU/HT reference clock in the range of 190~600.

PCIE Reference Clock

Use this item to set PCIE reference clock in the range of 90~250.

SB Reference Clock

Use this item to set SB reference clock in the range of 90~150.

VDIMM

Use this item to set memory module voltage.: 1.85V, 1.90 V,1.95V, 2.00V.

NB Voltage Setting

Use the item to set NB voltage. The optional settings are: Default, 1.15V, 1.20V, and 1.25V.

Note! The warning logo as follows shall appear . If you set certain parameters in three cases of Power User Overclock Settings item and press F10 to save the parameters.

- 1:**Setting the voltage at CPU directly over 1.500v in the CPU Voltage at Next Boot Item .
- 2:** Indirectly setting the voltage of CPU over 1.500v by adding certain percentage of voltage over the previous voltage set in the CPU Voltage at Next Boot Item.
- 3:** When the voltage of Memory is set over 2.4v.

3-12 Thermal Throttling Options

Phoenix - AwardBIOS CMOS Setup Utility

Thermal Throttling Options

CPU Thermal-Throttling	Disabled	Item Help
CPU Thermal-Throttling Temp	70	
CPU Thermal-Throttling Duty	50%	Menu Level >
↑↓→← Move Enter:Select +/-/PU/PD:Value F10:Save ESC:Exit F1:General Help F5:Previous Values F6:Optimized Defaults F7:Standard Defaults		

3-13 Load Fail-Safe Defaults

Load Fail-Safe Defaults

When you press <Enter> on this item, you get a confirmation dialog box with a message similar to:

Load Fail-Safe Defaults (Y/N)? N

Pressing <Y> loads the default values that are factory settings for stable performance system operations.

3-14 Load Optimized Defaults

Load Optimized Defaults

When you press <Enter> on this item, you get a confirmation dialog box with a message similar to:

Load Optimized Defaults (Y/N)? N

Pressing <Y> loads the default values that are factory settings for optimal performance system operations.

3-15 Password Settings

Phoenix - AwardBIOS CMOS Setup Utility

Password Settings

Set Supervisor Password	Press Enter	Item Help
Set User Password	Press Enter	
		Menu Level >
↑↓→← Move Enter:Select +/-/PU/PD:Value F10:Save ESC:Exit F1:General Help F5:Previous Values F6:Optimized Defaults F7:Standard Defaults		

You can set either supervisor or user password, or both of them. The differences are:

Supervisor password: Can enter and change the options of the setup menus.

User password: Can only enter but do not have the right to change the options of the setup menus. When you select this function, the following message will appear at the center of the screen to assist you in creating a password.

ENTER PASSWORD:

Type the password, up to eight characters in length, and press <Enter>. The password typed now will clear any previously entered password from CMOS memory. You will be asked to confirm the password. Type the password again and press <Enter>. You may also press <Esc> to abort the selection and not enter a password.

To disable a password, just press <Enter> when you are prompted to enter the password. A message will confirm that the password will be disabled. Once the password is

disabled, the system will boot and you can enter Setup freely.

PASSWORD DISABLED.

When a password has been enabled, you will be prompted to enter it every time you try to enter Setup. This prevents an unauthorized person from changing any part of your system configuration.

Additionally, when a password is enabled, you can also require the BIOS to request a password every time your system is rebooted. This would prevent unauthorized use of your computer.

You determine when the password is required within the BIOS Features Setup Menu and its Security option. If the Security option is set to "System", the password will be required both at boot and at entry to Setup. If set to "Setup", prompting only occurs when trying to enter Setup.

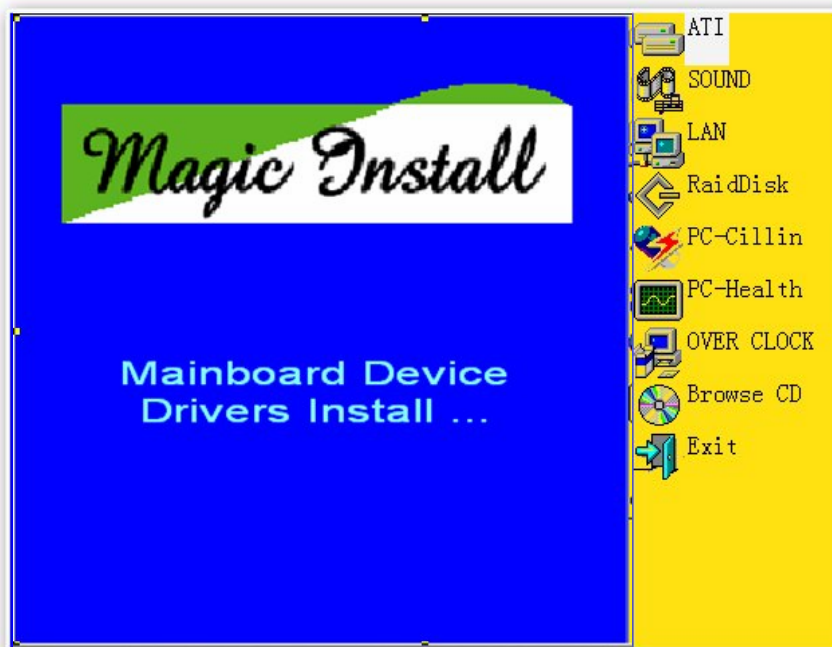
Chapter 4

DRIVER & FREE PROGRAM INSTALLATION

Check your package and there is A MAGIC INSTALL CD included. This CD consists of all DRIVERS you need and some free application programs and utility programs. In addition, this CD also include an auto detect software which can tell you which hardware is installed, and which DRIVERS needed so that your system can function properly. We call this auto detect software MAGIC INSTALL.

MAGIC INSTALL supports WINDOWS 9X/NT/2K/XP

Insert CD into your CD-ROM drive and the MAGIC INSTALL Menu should appear as below. If the menu does not appear, double-click MY COMPUTER / double-click CD-ROM drive or click START / click RUN / type X:\SETUP.EXE (assuming X is your CD-ROM drive).



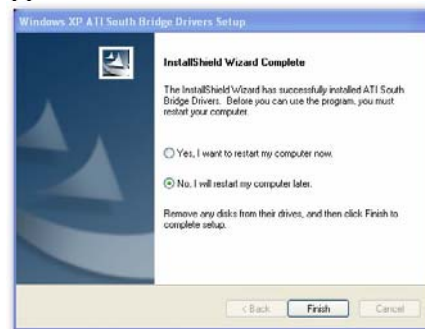
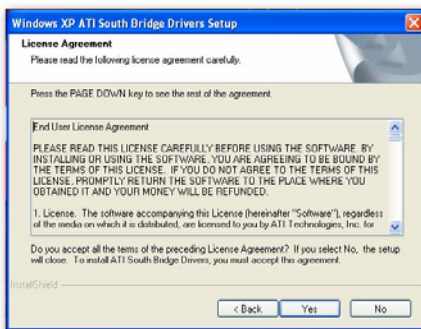
From MAGIC INSTALL MENU you may take 9 selections:

1. ATI install ATI driver pack
2. SOUND install ALC 662 HD Audio driver
3. LAN install RealTek LAN Controller Driver
4. RaidDisk install SATA RAID Driver and Utility
5. PC-CILLIN install PC-CILLIN 2007 anti-virus program
6. PC-HEALTH install My Guard hardware monitor utility
7. OVERCLOCK install overclocking utilities
8. BROWSE CD to browse the contents of the CD
9. EXIT to exit from MAGIC INSTALL menu

4-1 ATI Install ATI Driver Pack



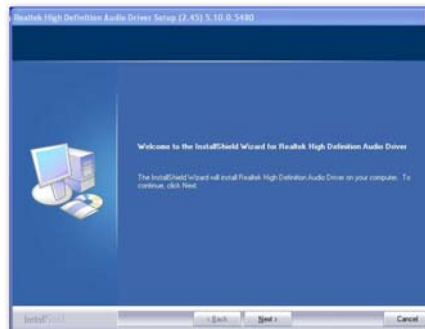
1. Click ATI appears on the MAGIC INSTALL MENU.
2. Click NEXT when ATI software driver pack appears.



3. Click "Yes" to accept the license agreement and start installation.
4. Choose whether you would like to restart and click Finish to restart your computer.

NOTE: Please upgrade your Windows XP to Service Pack 1 / Windows 2000 to Service Pack 4 or later before you install the HD Audio CODEC driver

4-2 SOUND Install ALC 662 HD Audio Driver



1. Click SOUND when MAGIC INSTALL MENU appears
2. Click NEXT When Realtek High Definition Audio driver windows appear



3. Click FINISH and restart your computer



4. Manual Sound Effect Setting



5. Devices and mixer setting



6. Audio input and output setting.



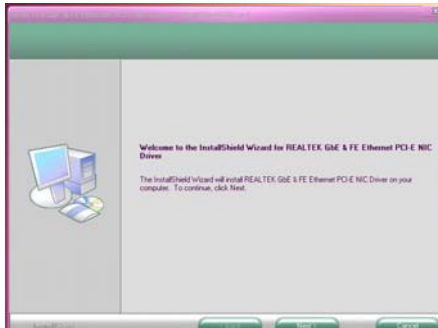
7. Microphone effect setting.



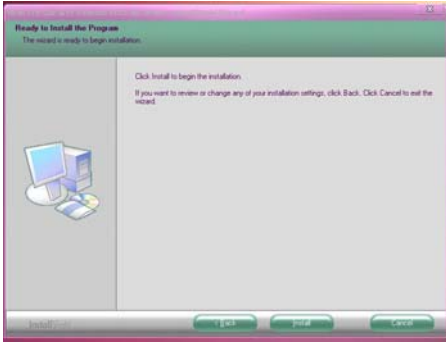
8. 3D demo setting.

NOTE: Please upgrade your Windows XP to Service Pack 1 / Windows 2000 to Service Pack 4 or later before you the HD Audio CODEC driver.

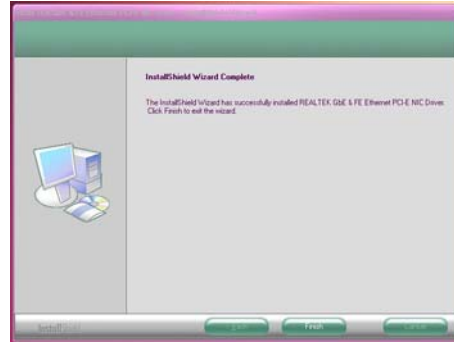
4-3 LAN Install RealTek LAN Controller Driver



1. Click LAN when Magic Install Menu appears. 2. Click Next to install RealTek LAN Driver.



3. Click Install to begin the installation.



4. After driver installation completed, Click Finish.

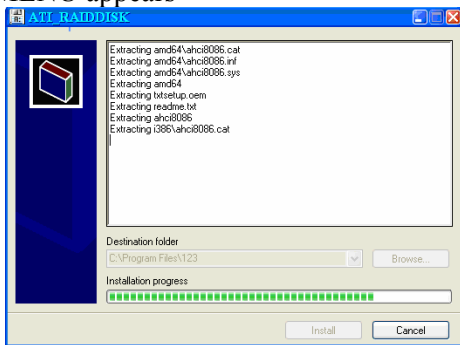
4-4 RAID Install SATA RAID Driver and Utility



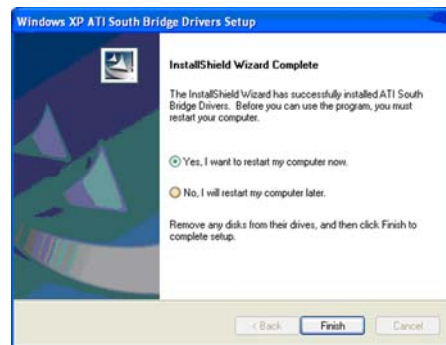
1 Click RAIDisk when MAGIC INSTALL MENU appears



2. Install RAID Disk.

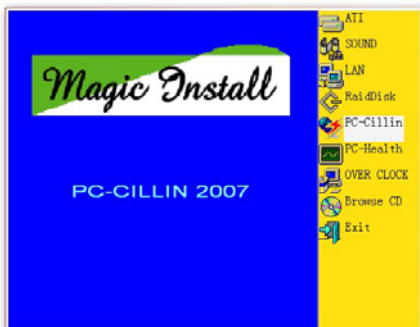


3. The installation process.

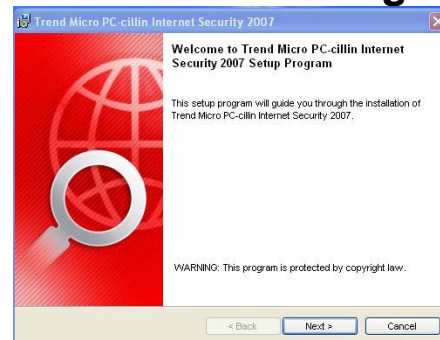


4. Click FINISH to complete the installation

4-5 PC-CILLIN Install PC-CILLIN 2007 Anti-virus Program



1 Click PC-CILLIN when MAGIC INSTALL MENU appears



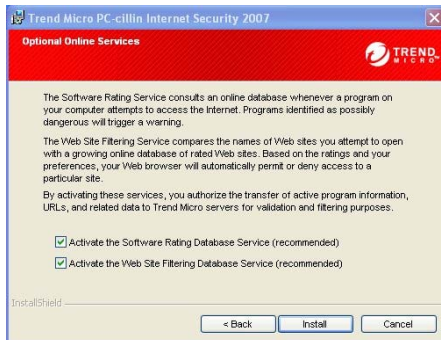
2. Please select Next when the "Trend Micro internet security" install shield wizard windows appears



3. This is license agreement, select "I accept the terms in the license agreement" and Click NEXT.



4. The preinstallation checkup process

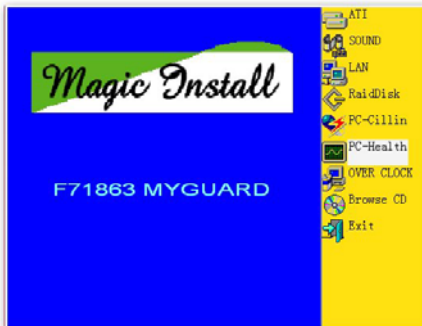


5. Click Next after you select the features you want to install and the folder to install it.



6. Click Install after you select to install the optional online services.

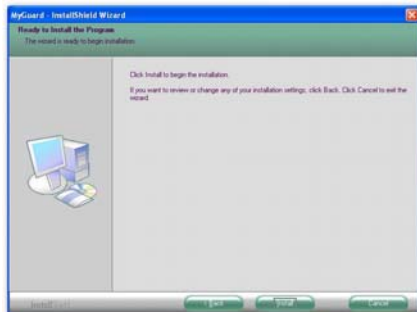
4-6 PC-HEALTH Install MyGuard Hardware Monitor Utility



1. Click PC-HEALTH when MAGIC INSTALL MENU appears



2. Click Next on Install shield wizard Window appears.



3. Click Install to begin the installation.

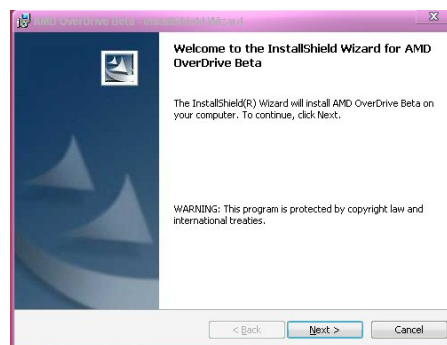


4. Click Finish to complete the installation.

4-7 OVERCLOCK Install Overclocking Utility



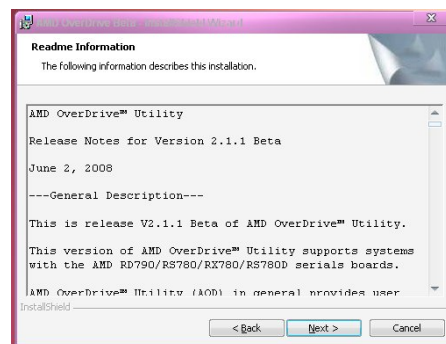
1. Click OVER CLOCK on the MAGIC INSTALL MENU appears



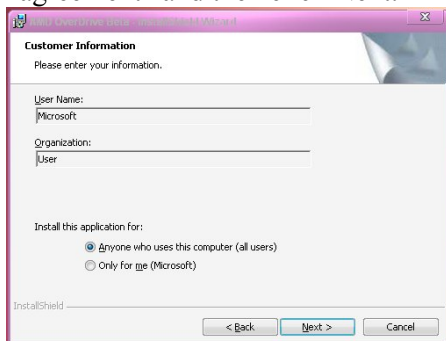
2. Click Next.



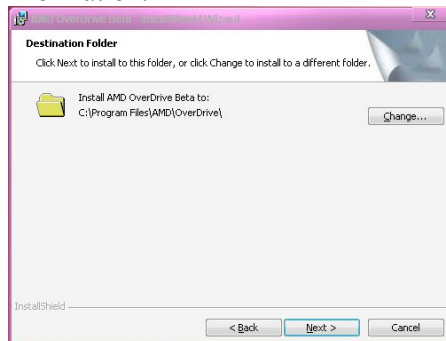
3. Select "I agree the terms in the license agreement" and then click Next.



4. Click Next after you read the Readme Information.



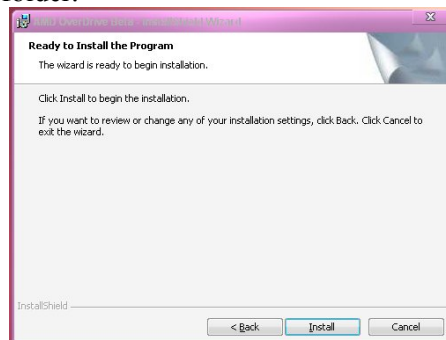
5. Click Next after you type in the customer information.



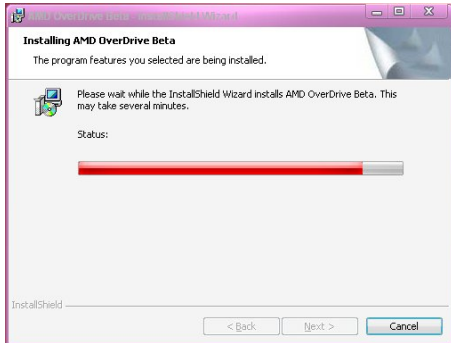
6. Click Next after you select the destination folder.



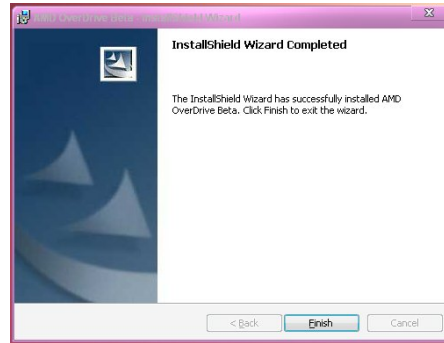
7. Click after you decide whether you would like to have a shortcut of the program on your desktop.



8. Click Install.



9. Installation process.



10. Click Finish to complete the installation process.

4-8 How to Update BIOS

Before updating the BIOS, users have to check if the “Miscellaneous Control” of BIOS SETUP has the “Flash Part Write Protect” selection. If there is one, users have to “Disable” the “Flash Part Write Protect” selection of the “Miscellaneous Control” in BIOS SETUP. Otherwise the system will not allow you to upgrade BIOS by Award Flash Utility. If there is no such selection, users can follow the 4 steps directly to update BIOS.

STEP 1. Prepare a boot disc. (You may make one by click START click RUN type SYS A: click OK)

STEP 2. Copy utility program to your boot disc. You may copy from DRIVER CD X:\FLASH\AWDFLASH.EXE or download from our web site.

STEP 3. Download and make a copy of the latest BIOS for 770 series motherboard series from the web site to your boot disc.

STEP 4. Insert your boot disc into A:

Start the computer, type “Awdflash A:\xxxxxx.BIN /SN/PY/CD/CH/WB/CC/R”

xxxxxx.BIN is the file name of latest BIOS

SN means don't save existing BIOS data

PY means renew existing BIOS data

CD means clear DMI data after programming

CH means update HOLE

WB means always programming BootBlock

CC means clear existing CMOS data

R means restart computer

STEP 5. Type Enter to update and flash the BIOS, then the system will restart automatically.

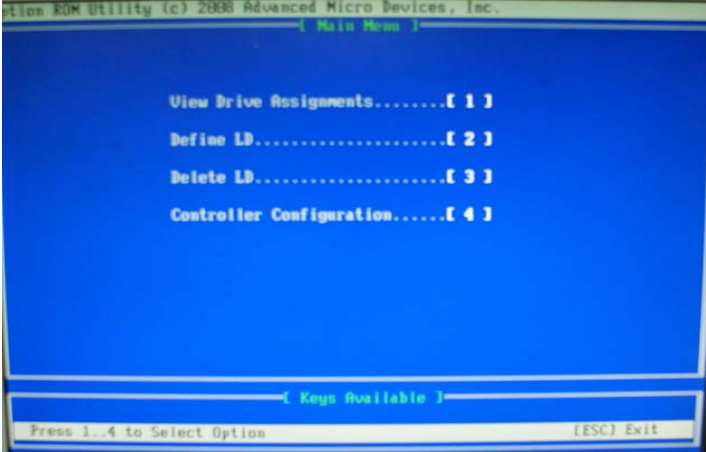
4-9 AMD Platform RAID Function Installation

Please set these choice in the BIOS as RAID : BIOS setup \Integrated Peripherals \Onchip SATA Device \ Onchip SATA Type. When the below figures appeared, please press [Ctrl-F] into figure 2



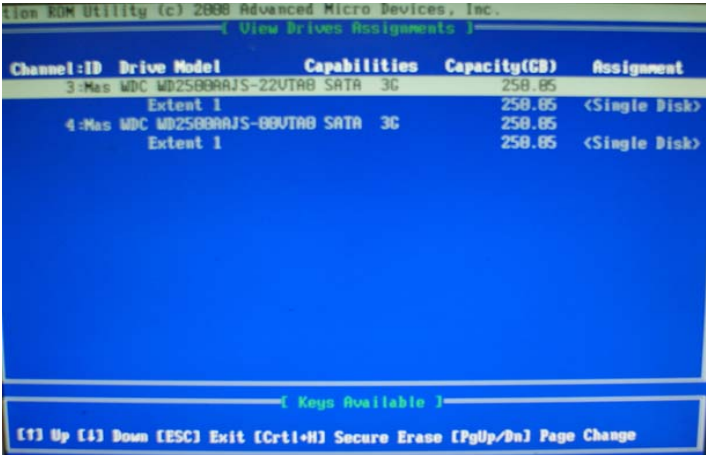
[figure1]

Function: press[1] key, showing the RAID; press [2] key , building RAID; press [3] key, delete the RAID; press[4] key, showing the information of controller.



[figure2]

press[1] key , showing the RAID , as the below figure

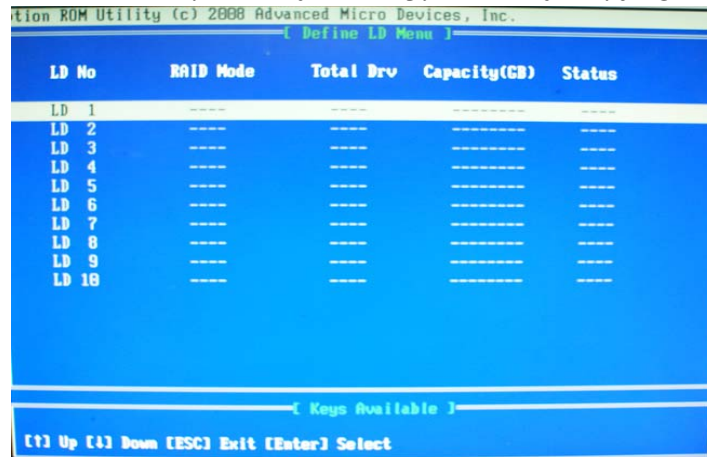


[figure3]

Press [2] key, the interface of RAID, as figure 4.

RAID function:

1. RAID 1 2. RAID 0 3. RAID 10 4. JBOD

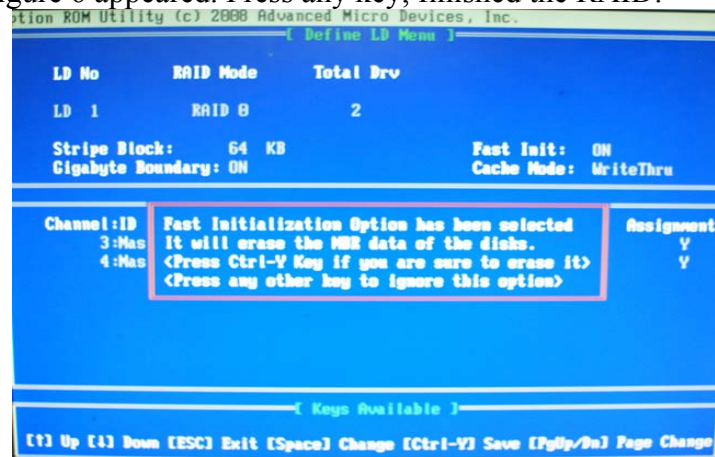


[figure4]

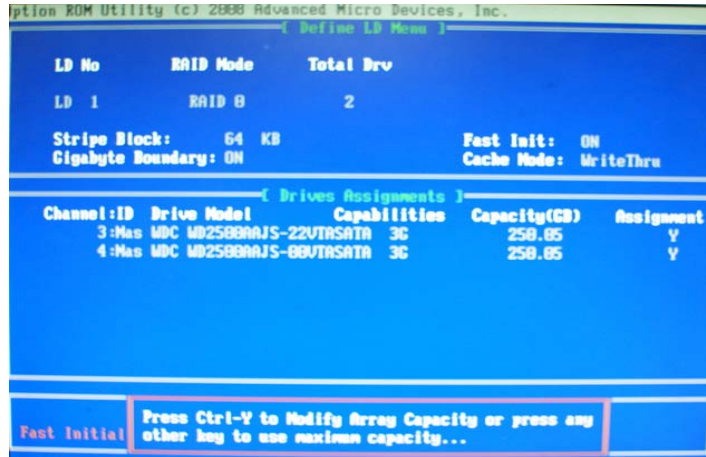
Choose LD 1 then press Enter.

Take Raid0 for example, use [↑] [↓] to shift the cursor, press space key to change the choice, press [Ctrl-Y] to keep.

Set Assignment mode as [Y], press [Ctrl-Y] to keep, then figure 5 appeared, erase the MBR. choose [Ctrl-Y], figure 6 appeared. Press any key, finished the RAID.

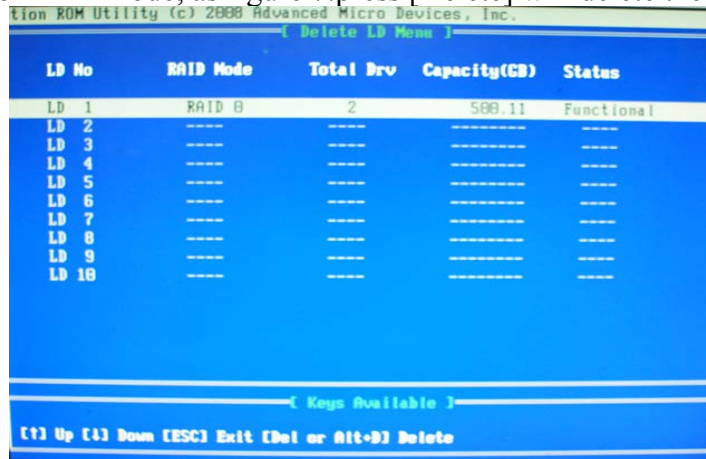


[figure5]



[figure6]

Press [3], delete the RAID mode, as figure 7. press [Delete] will delete the array. As figure 7 .



[figure7]

Press [4], showing the information of controller, as figure 8.



[figure8]

Making RAID driver diskette before Install WindowsXP/2000

Before you install the Windows XP or Windows 2000, you will need to make a RAID driver diskette before you start to install the Operating System.

How to make a RAID driver diskette?

- 1: Insert the diskette which is being formatted in floppy drive on a system which can start OS.
- 2: After booting OS insert the bundle CD in your CD-ROM
- 3: Copy all the files from \NF-orce4\RAIDDisk to floppy diskette

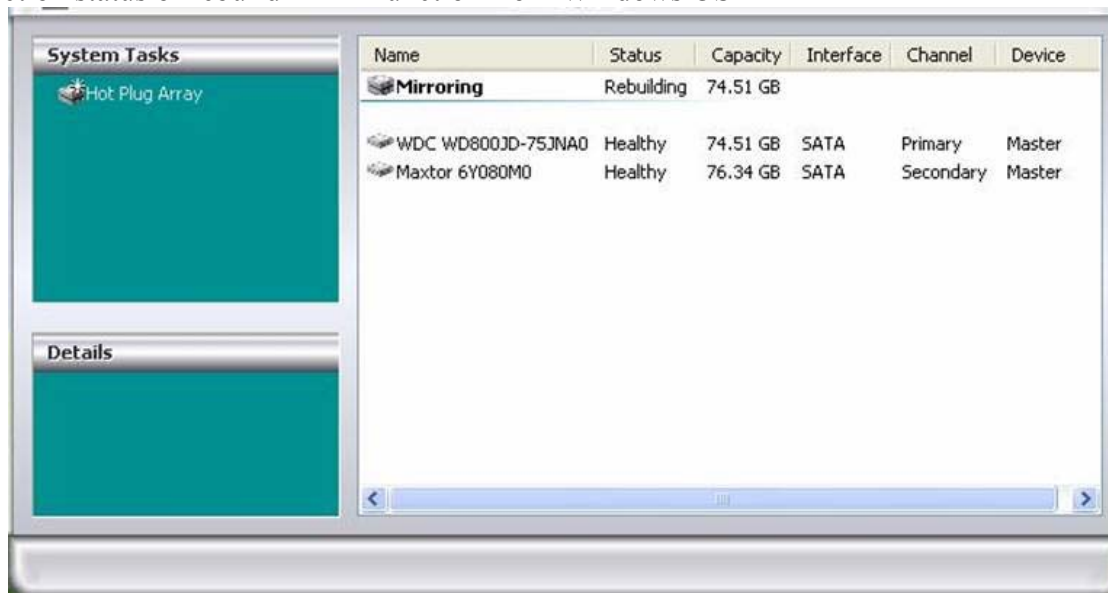
Once you have the SATA driver diskette ready, you may start to install Windows XP or Windows 2000 on your System.

Installation of Windows XP/ Windows 2000

For installation of Windows XP or Windows 2000, please insert Windows XP or Windows 2000 CD into the CD-ROM drive. Then remove the floppy diskette, and boot the system. At the very beginning, you will see the message at the bottom of screen, “Press F6 if you need to install a third party SCSI or RAID driver....”

At this moment, please press <F6> key and follow the instructions of Windows XP or Windows 2000 for the proper installation.

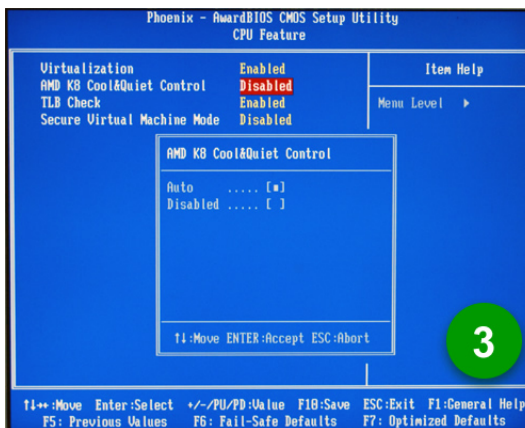
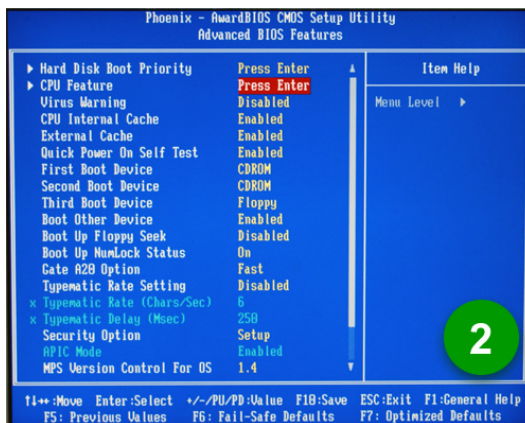
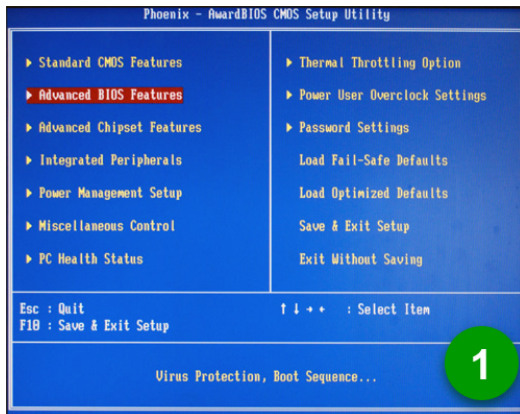
Execute Start → programs → NVIDIA corporation → RAID manager , you can view RAID function status or rebuild RAID function from Windows OS



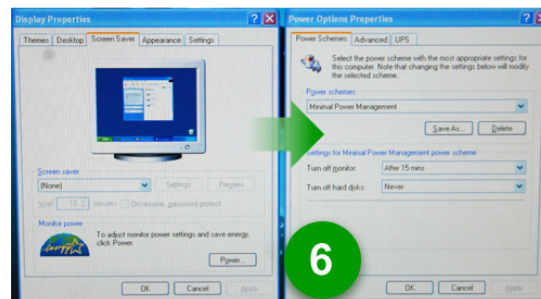
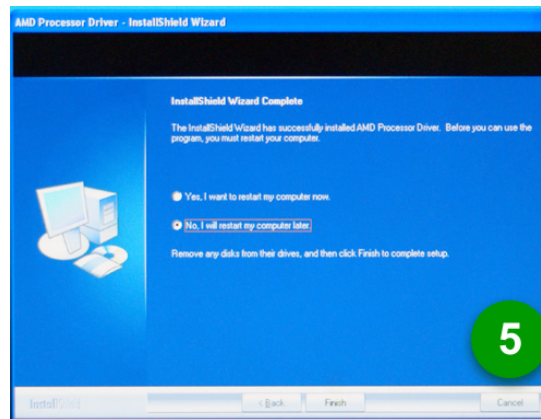
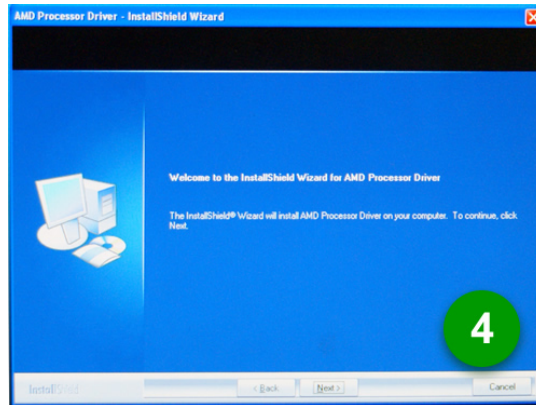
4-10 G.P.I Function Installation Steps

Operating Steps: The Default setting in BIOS has already enabled this function. If you wish to change the settings, please enter BIOS and take the following steps:

Select: Advanced BIOS Features→CPU Feature→AMD K8 Cool&Quiet Control: AUTO/Disable(This function control the POWER SAVING MODE: Auto/Disabled)



Compatible with OS: Windows XP/ 64 series. Users must install CPU driver program(AMD Processor Driver) and select the "Minimal"item in Power Setting.



With OS Windows Vista series, there is no need for to take more steps. If needed, please enter Power Settings to make corresponding changes