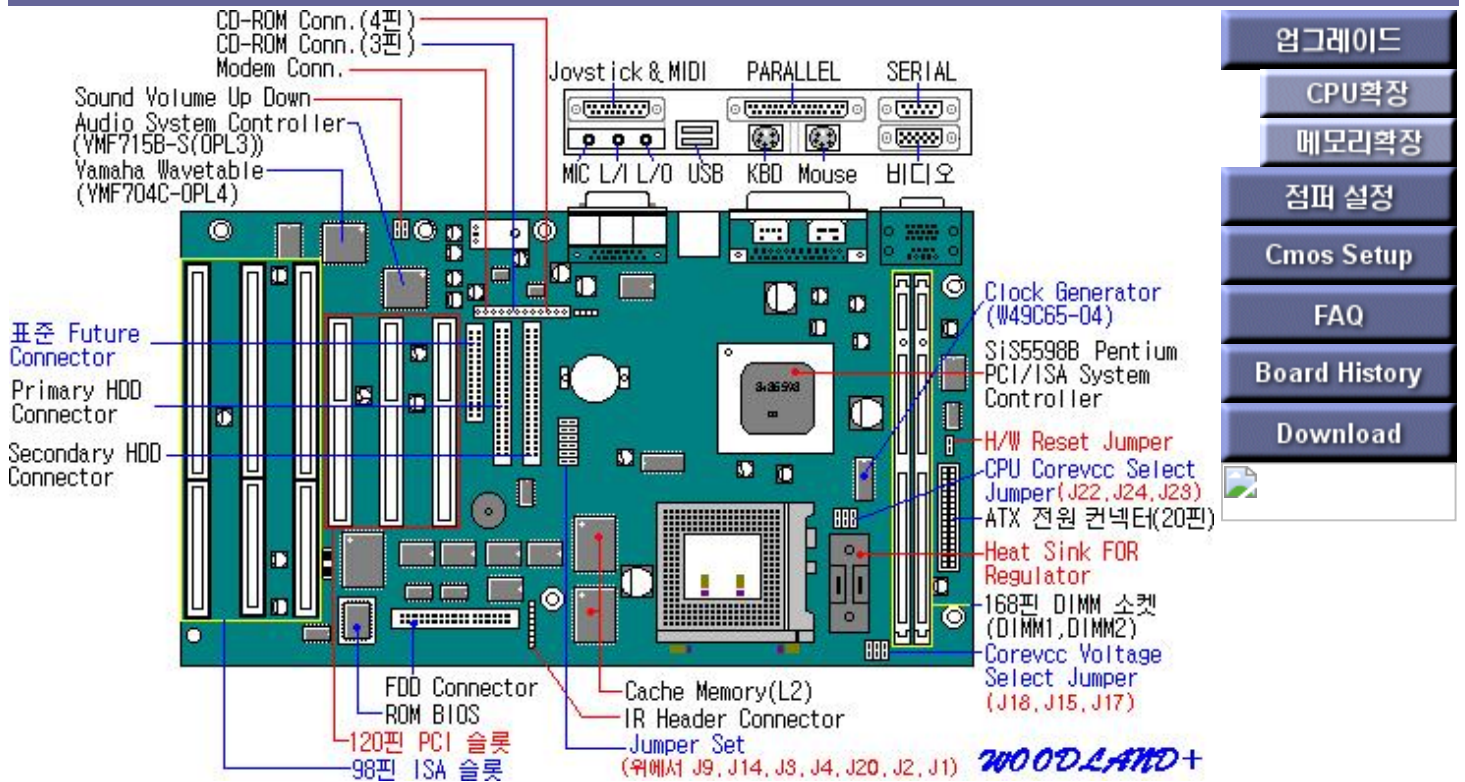


WOODLAND+ Main Board



WOODLAND+ Motherboard Features

characteristic

The WOODLAND+ motherboard includes the following features:

- Intel Pentium P54C 75~233 MHz, P55C, AMD K5, K6, Cyrix M1,M2 support
- Expandable up to 256MB using 2DIMMs
- UMA Graphics Controller Built-in
- Pipelined Burst 256KB SRAM Built-in
- Math coprocessor built into the microprocessor chip
- Built-in 16-bit Audio(YMF715)
- Built-in Wavetable(YMF704-OPL4)
- Bus Mastering IDE (DMA-33)
- Two built-in serial ports and one parallel port
- Built-in IBM PS/2 compatible keyboard and mouse ports
- Three 32-bit PCI bus slots and four 16-bit ISA slots
- Built-in MIDI, Joy stick port
- Built-in Video Connector
- Two built-in USB ports
- Built-in MIC, Line-in, Stereo Line-out Jack

[\[Back to Previous \]](#)

WOODLAND+ CPU

CPU

Supported CPUs:	Intel Pentium P54c(S) 75/90/100/120/133/150/166/200MHz
	Intel Pentium P55c(MMX) 166/200/233 MHz
	AMD-K6 166/200/233MHz
socket :	Comes with 321-pin Socket 7
P54CTB(Pentium OverDrive Processor), P55C	
Clock Speed :	50/60/66Mhz
P54C(S) CPU runs on 3.3Volt.	
P55C(MMX) CPU operates at 2.8Volt & 3.3Volt.	

< Jumper Settings >

Processor Bus Fraction Jumpers (J20, J1, J2)					
J20	J2	J1	Frequency Ratio P54C,K5,M1	Pentium Processor MMX,K6	Speed/Clock
2-3	1-2	2-3	2.5	2.5	150/60,166/66
2-3	1-2	1-2	3	3	150/50,180/60,200/66
2-3	2-3	2-3	2	2	100/50,120/60,133/66
2-3	2-3	1-2	1.5	3.5	75/50,90/60,100/66/233

WOODLAND+ Jumper Settings

< Jumper Settings >

Processor Bus Fraction Jumpers (J20, J1, J2)

J20	J2	J1	Frequency Ratio P54C,K5,M1	Pentium Processor MMX,K6	Speed/Clock
2-3	1-2	2-3	2.5	2.5	150/60,166/66
2-3	1-2	1-2	3	3	150/50,180/60,200/66
2-3	2-3	2-3	2	2	100/50,120/60,133/66
2-3	2-3	1-2	1.5	3.5	75/50,90/60,100/66/233

CMOS CLEAR Jumper(J9)

Jumper	CLEAR	NORMAL
J9	2-3	1-2

Host and PCI Clock selection(J14, J3, J4)

J14	J3	J4	Host Clock	PCI Clock
1-2	2-3	1-2	50MHz	25MHz
1-2	2-3	2-3	60MHz	30MHz
1-2	1-2	1-2	66MHz	33MHz
1-2	1-2	2-3	55MHz	27.5MHz

Processor Voltage Selection(J15, J17, J18, J22, J23, J24)

CPU Voltage	Core Voltage			I/O Voltage		
	J18	J15	J17	J22	J23	J24
3.3V(P54C, P54C, M1, K5)	OPEN	OPEN	CLOSE	2-3	2-3	2-3
3.2V(K6-233)	OPEN	CLOSE	OPEN	1-2	1-2	1-2
2.85V(MMX, K6, M2)	CLOSE	OPEN	OPEN	1-2	1-2	1-2

Floppy Write Protect (J7)

J7	Function
1-2	Normal
2-3	Write Protect

WOODLAND+ Memory Settings

Cache Memory		
Volume :	256 KB or 512 KB	
Main Memory		
standard :	JEDEC 168핀 3.3V Unbuffered DIMM	
type :	EDO, Synchronous DRAM DIMMING	
type :	8BM, 16MB, 32MB, 64MB, 128MB	
Maximum Supported Memory:	256MB (64MB supported in DOS mode)	
BANK composition		
memory size	Bank 0,1 (DIMM1)	Bank 2,3 (DIMM2)
8m	8m	--
16M	8m	8m
	16M	--
24M	16M	8m
32m	16M	16M
	32m	--
40M	32m	8m
48M	32m	16M
64M	32m	32m
	64M	--
72m	64M	8m
80M	64M	16M
96M	64M	32m
128M	64M	64M
	128M	--
132M	128M	4M
136M	128M	8m
144M	128M	16M
160M	128M	32m
192M	128M	64M
256M	128M	128M

WOODLAND+ Main B/D CMOS SETUP

use key

mouse	Select each item (press the left button)
Movement between each group	<Tap> key
Move between each item	arrow keys
select each item	<Enter> key
move all screen	<Esc> key
When saving	<ALT> + <Space> keys
Help	<ALT> + <H>

When booting, press DEL KEY (press when Hit DEL if you want to run SETUP message)

Level 1	Step 2	Step 3	Step 4	optional
Setup	Standard	Pri Master	Type	1~46, User, Auto, CD-ROM
			LBA/Large Mode	Off, On
			Black Mode	Off, On
			32Bit Mode	Off, On
			PIO Mode	Auto, 0~4, 5
		Pri Slave		Same as Pri Master
		Sec Master		Option of Secondary Slave HDD or CD-ROM setting. The method is the same as Pri Master
		Sec Slave		Option of Secondary Slave HDD or CD-ROM setting. The method is the same as Pri Master
		Date/Time		Set date and time
		Floppy A		Not / 360K 5.¼ / 1.2M 5.¼ / 720KB ½ / 1.44M ½ / 2.88M ½
		Floppy B		Not / 360K 5.¼ / 1.2M 5.¼ / 720KB ½ / 1.44M ½ / 2.88M ½
	Advanced	Quick Boot		Enabled, Disabled
		BootUp Sequence		A:, C:, CD-ROM / C:, A:, CD-ROM / CD-ROM, A:, C: (select boot order)
		Boot Up Num-Lock		On, Off
		Floppy Drive Swap		Disabled, Enabled
		PS/2 Mouse Support		Disabled, Enabled
		Primary display		Absent, VGA/EGA, CGA 40*25, CGA 80*25, Mono
		Password Check		Setup, Always
		O/S 2 Compatible Mode		Disabled, Enabled (set when using OS/2 after installing 64MB or more of system memory)
		External Cache		Disabled, Enabled (whether external cache is used)
		System BIOS Cacheable		Disabled, Enabled
		C000/C400, 16k Shadow		Enabled, Disabled (if using ISA video card)
		C800, CC00, D000, D400, D800, DC00,		
		16K Shadow		Enabled, Disabled
	Chipset	On-Chip VGA		Enabled, Disabled
			VGA Shared Memory Size	1M, 2M, 3M, 4M
			VGA Frequency	When using 40Mhz, On B/D Video, video memory clock setting.
		Floppy Access Control		Normal, Read Only
		HDD Access Control		Normal, Read Only
	Power Control	Power Management/APM		Enabled, Disabled
			Green PC Monitor Power State	Disabled, Off, Standby, Suspend
			Video Power Down Mode	Disabled, Standby, Suspend, Off
			Standby Time Out (Minute)	Disabled, 5min, 10min, 15min, 20min, 25min, 30min
			Suspend Time Out (minutes)	Disabled, 5min, 10min, 15min, 20min, 25min, 30min

			IRQ 3	Ignore, monitor
			IRQ 5	Ignore, monitor
			IRQ 7	Ignore, monitor
			IRQ 9	Ignore, monitor
			IRQ 10	Ignore, monitor
			IRQ 11	Ignore, monitor
			IRQ 13	Ignore, monitor
			IRQ 14	Ignore, monitor
			IRQ 15	Ignore, monitor
	PCI/PnP	Plug and Play Aware OS		Yes, No (whether the OS supports PnP)
		PCI Latency Timer (PCI Clocks)		32, 64, 96, 128, 160, 192, 224, 248
		PCI VGA Palette Snoop		Disabled, Enabled
		DMA Channel 0		Yes, No
		DMA Channel 1		Yes, No
		DMA Channel 3		Yes, No
		DMA Channel 5		Yes, No
		DMA Channel 6		Yes, No
		DMA Channel 7		Yes, No
		IRQ 3		Yes, No
		IRQ 4		Yes, No
		IRQ 5		Yes, No
		IRQ 7		Yes, No
		IRQ 9		Yes, No
		IRQ 10		Yes, No
		IRQ 11		Yes, No
	Peripheral	OnBoard SOUND		Enabled, Disabled
		OnBoard FDC		Enabled, Disabled, Auto
		OnBoard Serial Port 1		Auto, Disabled, 3F8h, 2F8h, 3E8h, 2E8h
		OnBoard Serial Port 2		Auto, Disabled, 3F8h, 2F8h, 3E8h, 2E8h
		OnBoard Parallel Port		Auto, Disabled, 378h, 278h, 3BCh
			Parallel Port Mode	Bi-dir, EPP, ECP
			Parallel Port DMA Channel	0, 1, 3(Parallel Port Mode를 ECP로 Onboard Parallel Port가 Auto로 설정된 경우)
			Parallel Port IRQ	5, 7(Onboard Parallel Port Mode가 Auto가 아닐 경우)
		OnBoard PCI IDE		Disabled, Primary, Secondary, Both
Utility	Detect IDE	Pri Master, Pri Slave, Sec Master, Sec Slave(HDD, CD-ROM 자동 검출)		
	Color Set	SKY, Army, Pastel, LCD		
Security	Supervisor	Press Enter(암호 설정)		
	User	Press Enter(암호 설정)		
		Setup		Advanced
		Security		Security
		Utility		Color Set
	Anti-Virus(Virus Protection)			Enabled, Disabled
Default	Original			셋업 수행 전 상태로 복귀
	Optimal			최적 환경으로 자동 설정