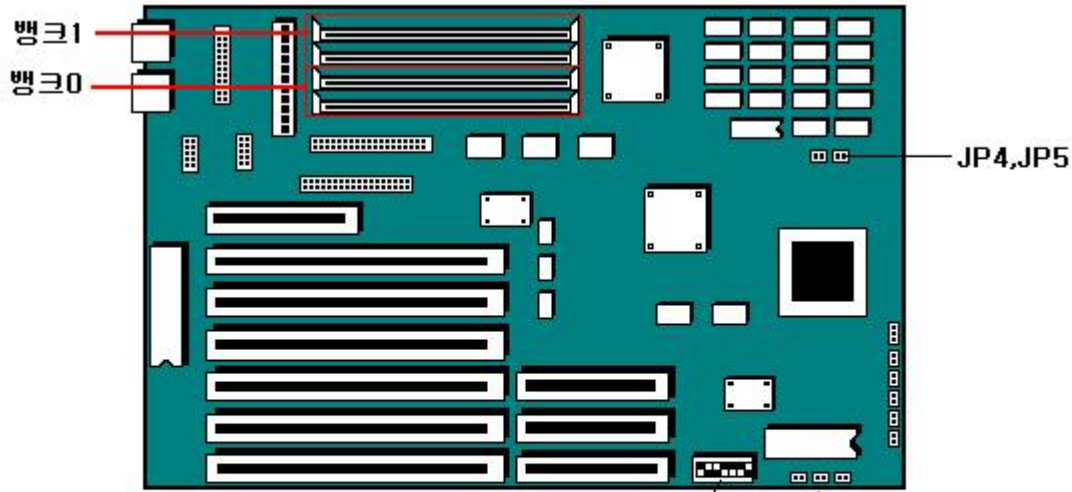
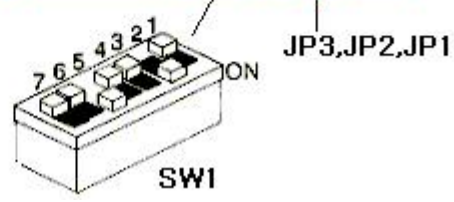


TIGER Main Board



- 업그레이드
- CPU확장
- 메모리확장
- 점퍼 설정
- Cmos Setup
- FAQ
- Board History
- Download



TIGER Main Board

[[Back to Previous](#)]

TIGER Jumper Settings

Jumper and DIP switch settings

- PENTIUM 60MHz or 66MHz microprocessor (depending on model type)

DIP SW	setting	function
One	ON	When using a password
	OFF	When not using a password
2	ON	When using a color video board
	OFF	When using a mono video board
4	ON	VESA Local 1 Wait State
	OFF	VESA Local 0 Wait State
5	ON	Over Local BUS SPEED 33MHz
	OFF	Local BUS SPEED less than 33MHz

* Set No. 6 and 7 of SW1 to OFF.

SW1&JP	128KB	512 KB
3	ON	OFF
JP4,JP5	IN	OUT

TIGER MEMORY SETUP

Cache memory capacity setting (128 KB or 512 KB, depending on model)

main memory

type	72-pin SIMM module
	Single Density SIMM: 1MB, 4MB, 16MB
	Double Density SIMM: 2MB, 8MB, 32MB
speed	70ns
Volume	Available in 1MB, 2MB, 4MB, 8MB,16MB, 32MB
expansion	Up to 128MB (default 8MB built into motherboard)

How to install

memory size	bank 0		bank 1	
	(SIMM1)	(SIMM2)	(SIMM3)	(SIMM4)
2m	1M	1M	--	--
4M	2m	2m	--	--
	1M	1M	1M	1M
6M	1M	1M	2m	2m
8m	4M	4M	--	--
	2m	2m	2m	2m
10M	1M	1M	4M	4M
12M	2m	2m	4M	4M
16M	8m	8m	--	--
	4M	4M	4M	4M
18M	1M	1M	8m	8m
20M	2m	2m	8m	8m
24M	4M	4M	8m	8m
32m	8m	8m	8m	8m
	16M	16M	--	--
34m	1M	1M	16M	16M
36m	2m	2m	16M	16M
40M	4M	4M	16M	16M
48M	8m	8m	16M	16M
64M	16M	16M	16M	16M
	32m	32m	--	--
66m	1M	1M	32m	32m
68M	2m	2m	32m	32m
72m	4M	4M	32m	32m
80M	8m	8m	32m	32m
96M	16M	16M	32m	32m
128M	32m	32m	32m	32m

TIGER Main B/D CMOS SETUP

use key

Move by each item	up, down, left, right arrow keys
Go to setup screen page	PaUp or PaDn key (composed of two screens)
select each item	+ or - 7

When booting, press Ctrl + ALT + S KEY

menu item option item

Standard System Parameters (2/1 page)

System Time	time setting
System Date	set date
Floppy Disk A	Not / 360K 5.¼/ 1.2M 5.¼ / 720KB ½ / 1.44M ½ / 2.88M ½
Floppy Disk B	Not / 360K 5.¼/ 1.2M 5.¼ / 720KB ½ / 1.44M ½ / 2.88M ½
Hard Disk C	Not Install, 1~47(47 Minutes User Define Type)
Hard Disk D	Not Install, 1~47(47 Minutes User Define Type)
Video Card	EGA/VGA, MONO, CGA 40, CGA 80
Keyboard	Installed, Not Installed
CPU Speed	Fast, Slow
PS/2 Mouse	Installed, Not Installed
Serial Port	COM1 + COM2, COM1(3F8), COM2(2F8), Disabled
Parallel Port	LPT1(3BC), LPT2(378), LPT278
Base Memory	XXX KB
Extended Memory	XXXXXX KB
FDD ASSIGN	No Changed, Changed --> A: B: changeable without cable change
NumLock ON	No, Yes
ON B/D IDE	Enabled, Disabled
ON B/D FDC	Enabled, Disabled
Parallel Direction	Uni-D, Bi-D

OPTI 82C596 / 82C597 Chip Set Feature Control

System BIOS Shadow	Enabled, Disabled
Video BIOS Shadow	Enabled, Disabled
System BIOS Cache	Enabled, Disabled
Video BIOS Cache	Enabled, Disabled
Password	Not Installed
	a. Disabled password
	b. Enabled BOOT password
	c. Enabled SETUP password
	d. Enabled BOOT/SETUP password
	e. Change, Enter new password
	Enable BOOT and SETUP password check
	Enable SETUP password check
	Enable BOOT password check