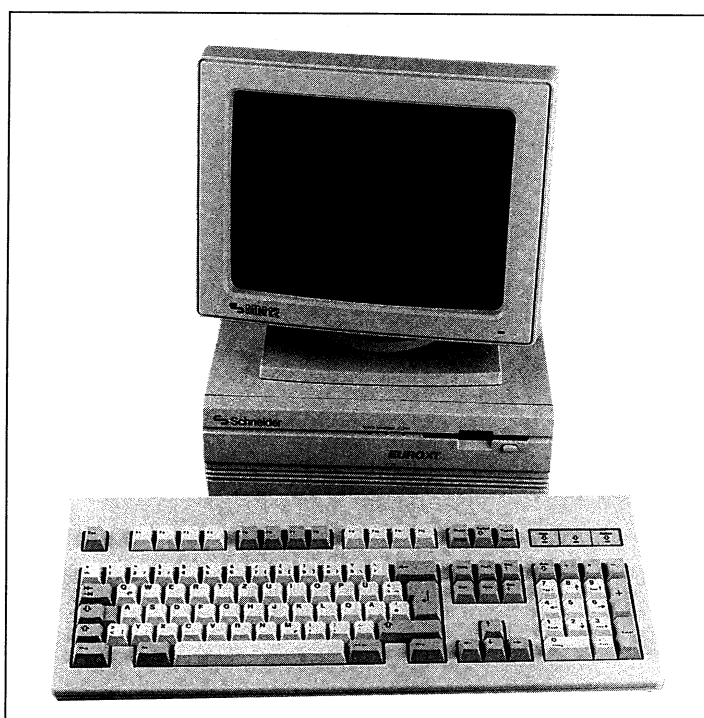
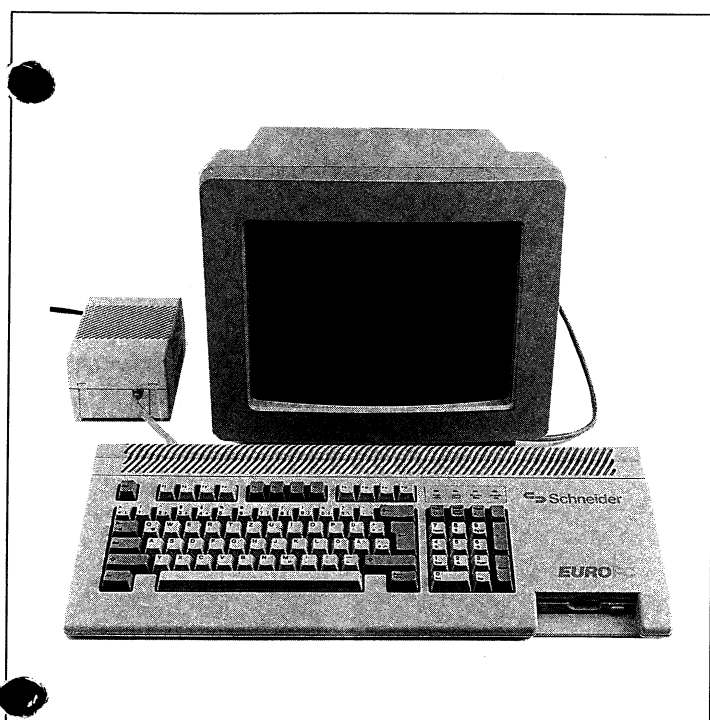


**SYSTEMEINHEIT
EURO PC
EURO PC II
EURO XT**



***** **ACHTUNG!** *****

Für Daten aller Art, die sich bei Einsendung an die Firma Schneider im Servicefall oder in jedem anderen Fall noch auf einem Datenträger befinden, wird bei Verlust oder Beschädigung keinerlei Haftung übernommen!

Bitte, sichern Sie sich Ihre Daten vorher von Ihrem Datenträger. Wie man eine Sicherungskopie erstellt, können Sie in Ihrer MS-DOS-Betriebsanleitung nachlesen.

***** **IMPORTANT!** *****

We accept no responsibility for the loss of or damage to data of any kind which is still contained on a data carrier which is sent to Schneider for servicing or for any other reason!

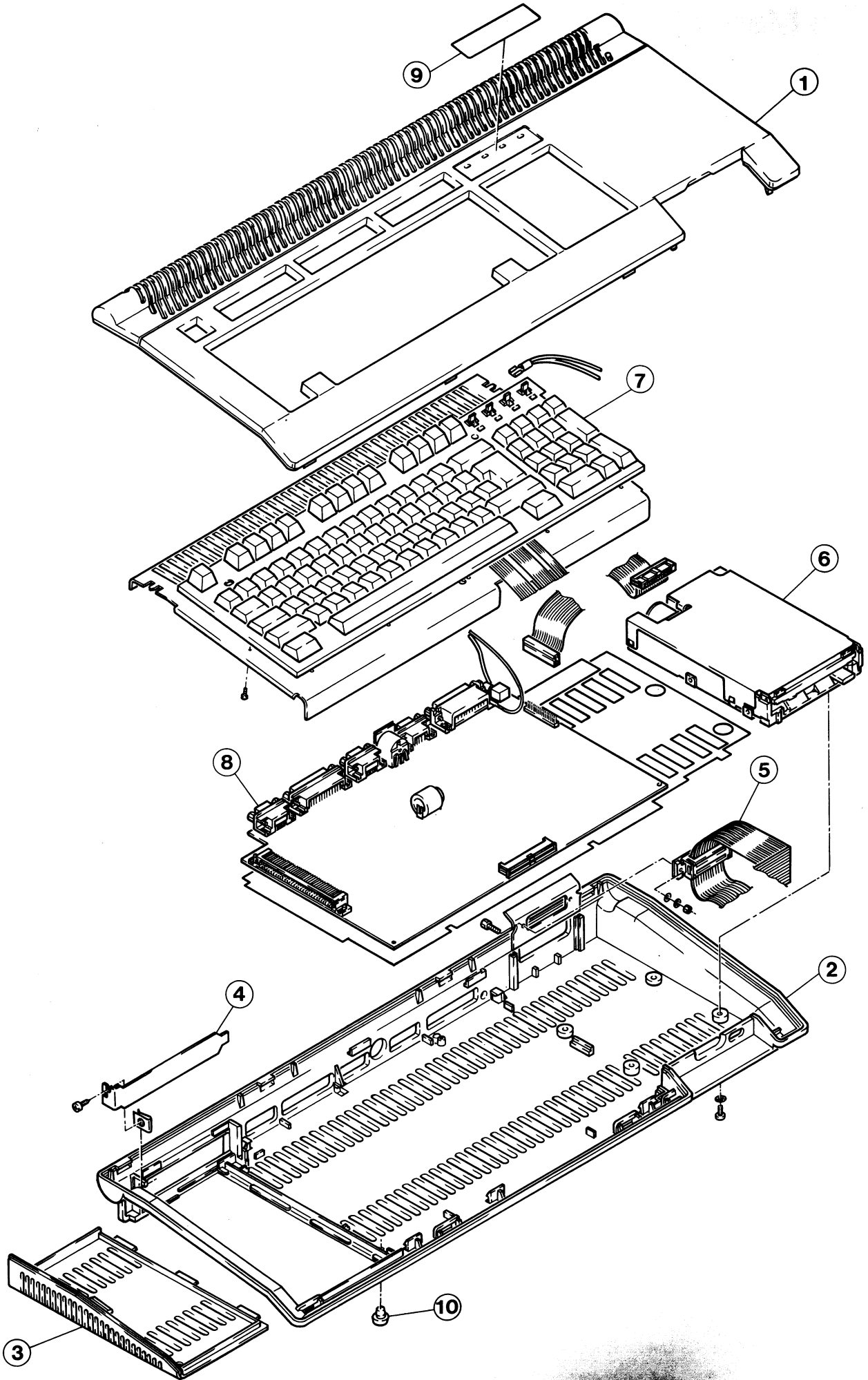
Please copy your data from your data carrier beforehand. You can read how to produce a backup copy in your MS-DOS operating instructions.

SYSTEMEINHEIT
EURO PC

Ident-Nr.: 43006



Exploded view



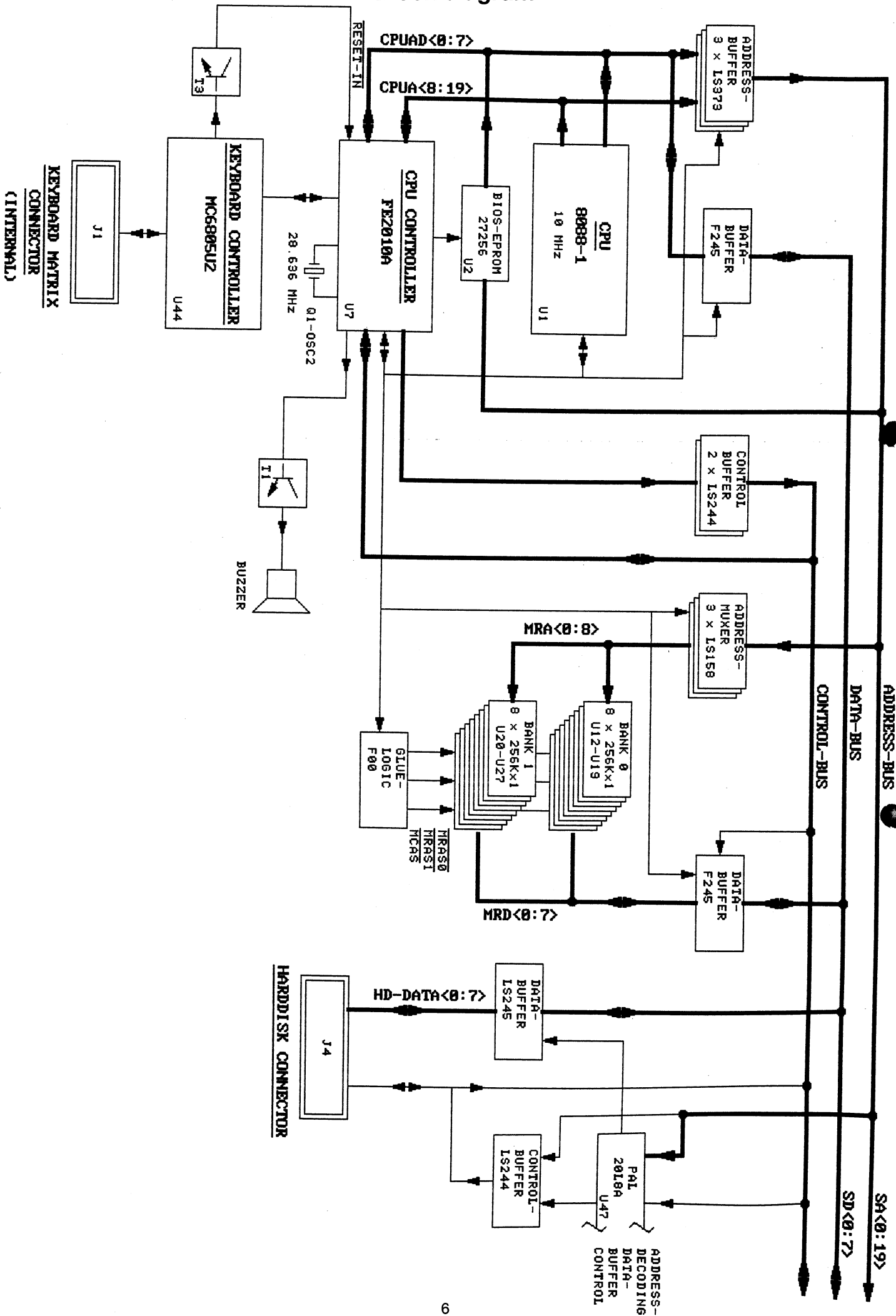
Ersatzteilliste für Systemeinheit Euro PC
Parts List for System Unit Euro PC

Best.-Nr. Part.-No.	Bezeichnung	Description	Zeich.-Pos. Ref.-No.	Preisgruppe
50 058 00	Styropor Euro PC	Polyfoam		B 7
50 024 00	Faltkarton Euro PC	Gift box		B 7
51 509 00	Gehäuseoberteil	Cabinet, top	1	C 7
50 842 00	Gehäuseboden	Cabinet, bottom	2	C 6
50 012 00	Gehäuseklappe	Cabinet, door	3	B 4
50 020 00	Blindblech	Plate, blind	4	A 7
50 018 00	Kabelbaum FDD	Cord FDD	5	C 5
50 017 00	Floppylaufwerk	Floppy disk drive	6	G 1
50 056 00	Druckknopf für Floppy (Toshiba)	Push-button, Floppy (Toshiba)		A 5
50 294 00	Druckknopf für Floppy (Sony)	Push-button, Floppy (Sony)		A 5
50 016 00	Tastatur (D)	Switch keyboard (D)	7	E 5
50 148 00	Tastatur (F)	Switch keyboard (F)		E 5
50 149 00	Tastatur (GB)	Switch keyboard (GB)		E 5
50 161 00	Tastatur (CH)	Switch keyboard (CH)		E 5
50 162 00	Tastatur (DK)	Switch keyboard (DK)		E 5
50 163 00	Tastatur (E)	Switch keyboard (E)		E 5
50 165 00	Tastatur (N)	Switch keyboard (N)		E 5
50 166 00	Tastatur (S/SF)	Switch keyboard (S/SF)		E 5
50 565 00	Tastatur (TR)	Switch keyboard (TR)		E 5
50 566 00	Tastatur (P)	Switch keyboard (P)		E 5
50 567 00	Tastatur (GR)	Switch keyboard (GR)		E 5
52 182 00	Tastatur (SU)	Switch keyboard (SU)		E 5
52 183 00	Tastatur (UAE)	Switch keyboard (UAE)		E 5
50 015 00	Platine CPU	CPU-board	8	J 1
50 014 00	Klebeschild	Sheet	9	A 6
50 141 00	Gehäusefuß	Leg, cabinet		A 2
50 023 00	Typenschild	Sheet, rating		A 3
50 003 00	Netzteil Euro PC	Power supply		F 0

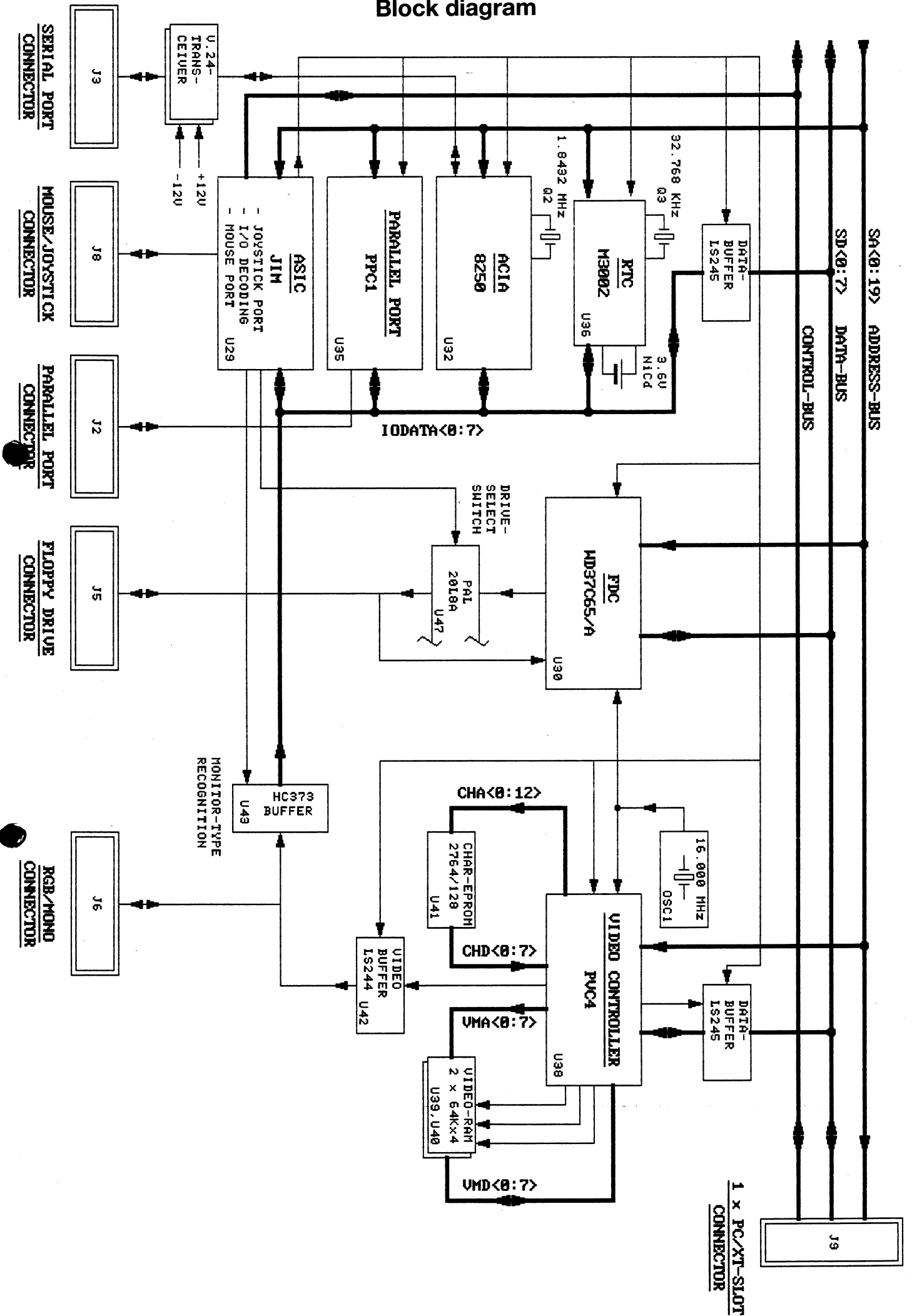
Note: All spare parts with country-index are reserved for foreign distributors only.

All 3.5" and 5.25" floppydisks must be replaced by new ones. Schneider passes no exchange price to the distributor or dealer.

Block diagram



Block diagram



REVISONS

LTR	DESCRIPTION	DATE	APPROVED
1	ADVANCED ENGINEERING RELEASE	12-27-87	H. ULLRICH
2	UPDATE	02-18-88	H. ULLRICH
3	UPDATE HARDISK INTERFACE	03-03-88	H. ULLRICH
4	UPDATE POWERON FOR EXT. HDD/FDD	03-31-88	H. ULLRICH
5	PREPRODUCTION RELEASE (REV.3 PCB)	04-13-88	H. ULLRICH
6	REWORK: ADD VCC TO HDD CONN., SUBSTITUTE L1 BY WIRE JUMP. (REV.4 PCB)	05-05-88	H. ULLRICH
7	REWORK: ADD ALTERNATE OSC2 (REV.5 PCB)	05-17-88	H. ULLRICH

DRAWING FILES:

EPC_71.DMG THIS SHEET
 EPC_72.DMG CPU SECTION
 EPC_73.DMG FEZ010A SECTION
 EPC_74.DMG /RAS-/CAS DECODING,
 ADDRESS MULTIPLEXER
 512 KB MAIN RAM
 ASIC JIM
 FLOPPY INTERFACE
 HARDISK INTERFACE
 SERIAL INTERFACE
 PARALLEL INTERFACE
 REAL TIME CLOCK
 PQC4 VIDEO CONTROLLER
 VIDEO RAM, CHAR. ROM
 KEYBOARD CONTROLLER
 CONNECTORS I
 CONNECTORS II
 BLOCK CAPS

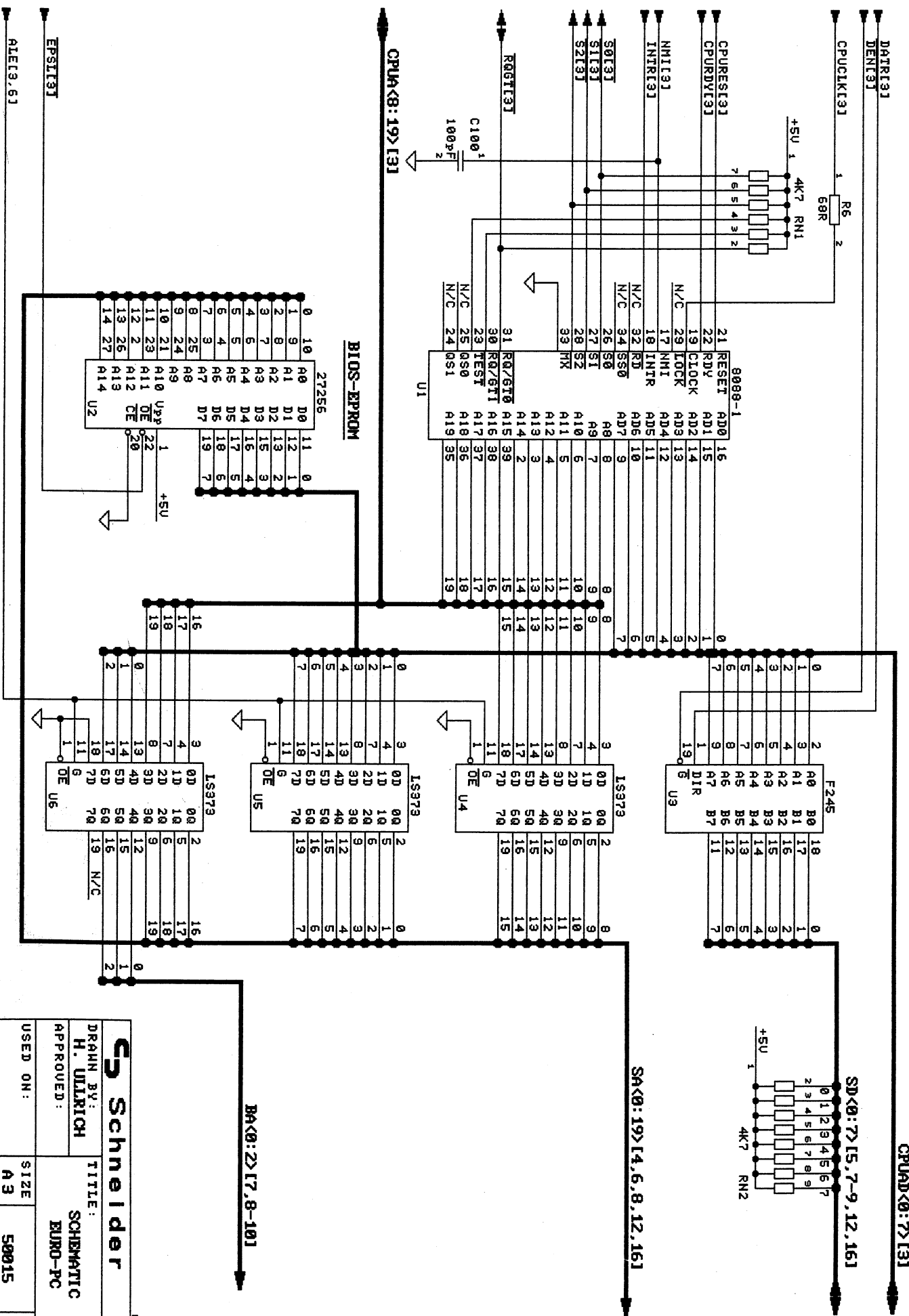
Schneider

EPC-71

DRAWN BY: H. ULLRICH
 APPROVED: SCHEMATIC EURO-PC

USED ON:	SIZE	50015	REU
	A3		7
DATE: 05-17-88	SHEET: 1 OF 17		

CPU SECTION



Schneider

DRAWN BY: H. ULLRICH
 APPROVED: [Signature]

TITLE: SCHEMATIC
 EURO-PC

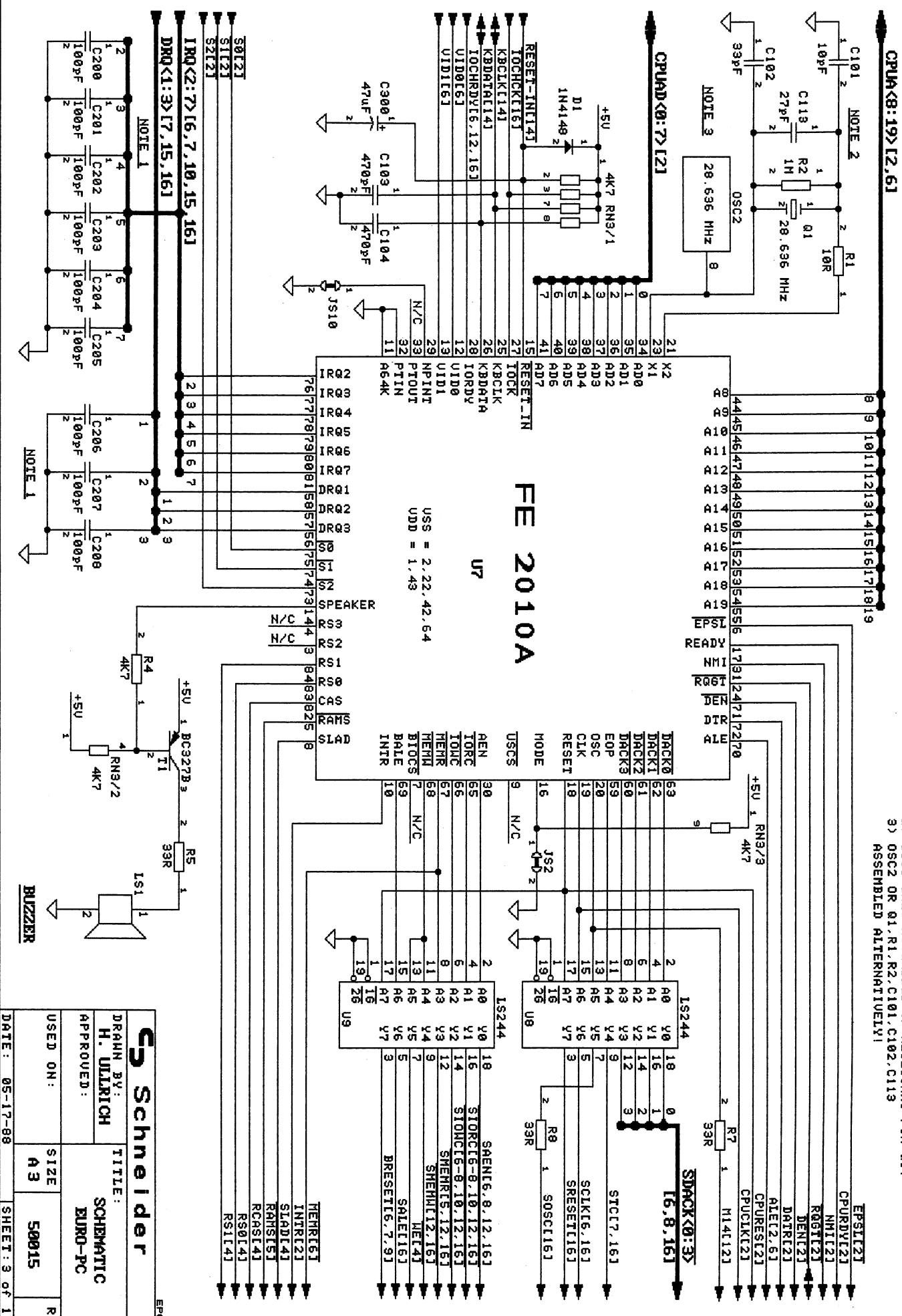
USED ON: SIZE A3
 50015 REV 7

DATE: 05-17-89
 SHEET: 2 of 17

ERC-72

CPU CONTROLLER

NOTES: 1) C200-C208 ONLY ASSEMBLED IF REQUIRED!
 2) C119 ONLY ASSEMBLED IF NECESSARY FOR Q11
 3) OSC2 OR Q1, R1, R2, C101, C102, C119 ASSEMBLED ALTERNATIVELY!



FE 2010A
 U7
 USS = 2.22, 42.64
 UDD = 1.43

Schneider

DRAWN BY: H. ULLRICH
 APPROVED: [Signature]
 TITLE: SCHEMATIC EURO-PC

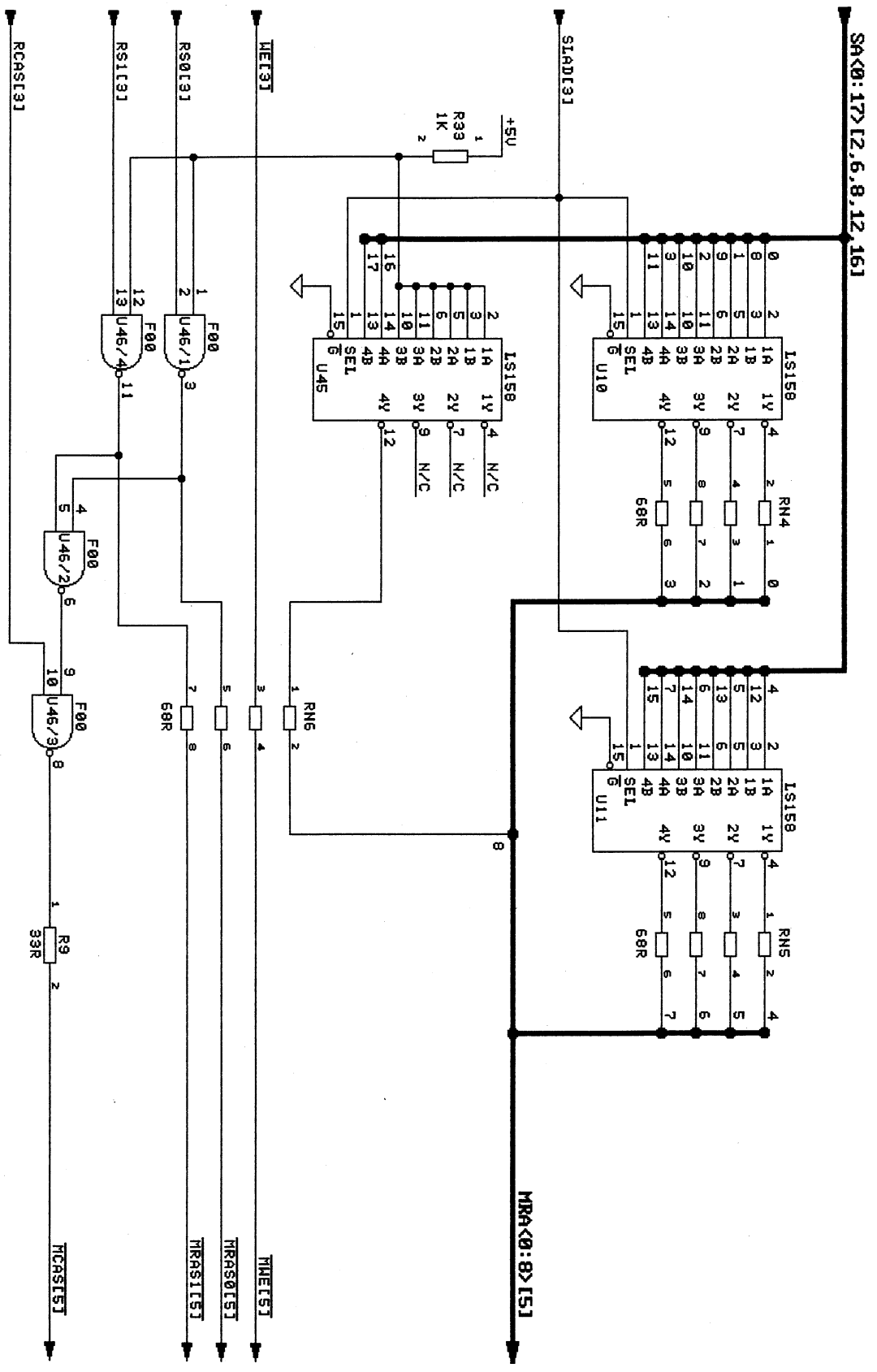
USED ON: SIZE A3
 S0015
 REV 7

DATE: 05-17-89
 SHEET: 9 of 17

8 7 6 5 4 3 2 1

8 7 6 5 4 3 2 1

/RAS-, /CAS-DECODING, ADDRESS MULTIPLEXER



Schneider

DRAWN BY:
H. ULRICH

APPROVED:

USED ON:

TITLE:
SCHEMATIC
EURO-PC

SIZE
A3

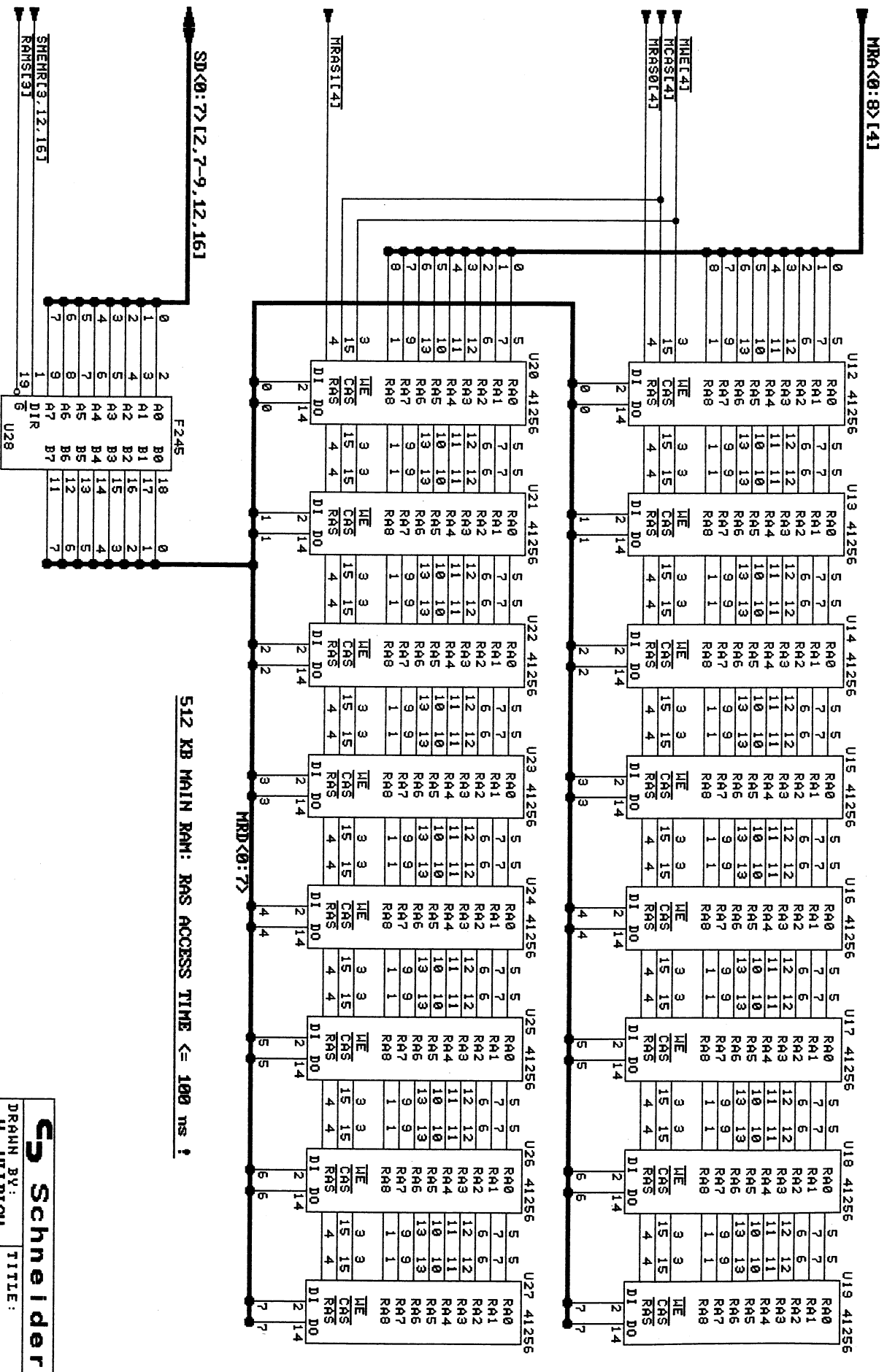
50015

REU
7

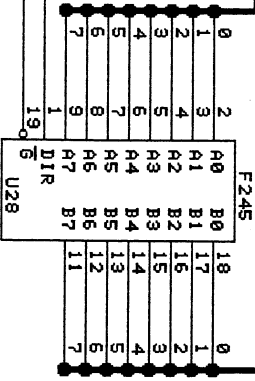
DATE: 05-17-88

SHEET: 4 of 17

512 KB MAIN RAM



512 KB MAIN RAM: RAS ACCESS TIME <= 100 ns !



Schneider

DRÄHN BV:
H. ULLRICH

TITLE:
SCHEMATIC
EURO-PC

APPROVED:

USED ON: SIZE A3

DATE: 05-17-88

SHEET: 5 of 17

REV 7

EPC-75

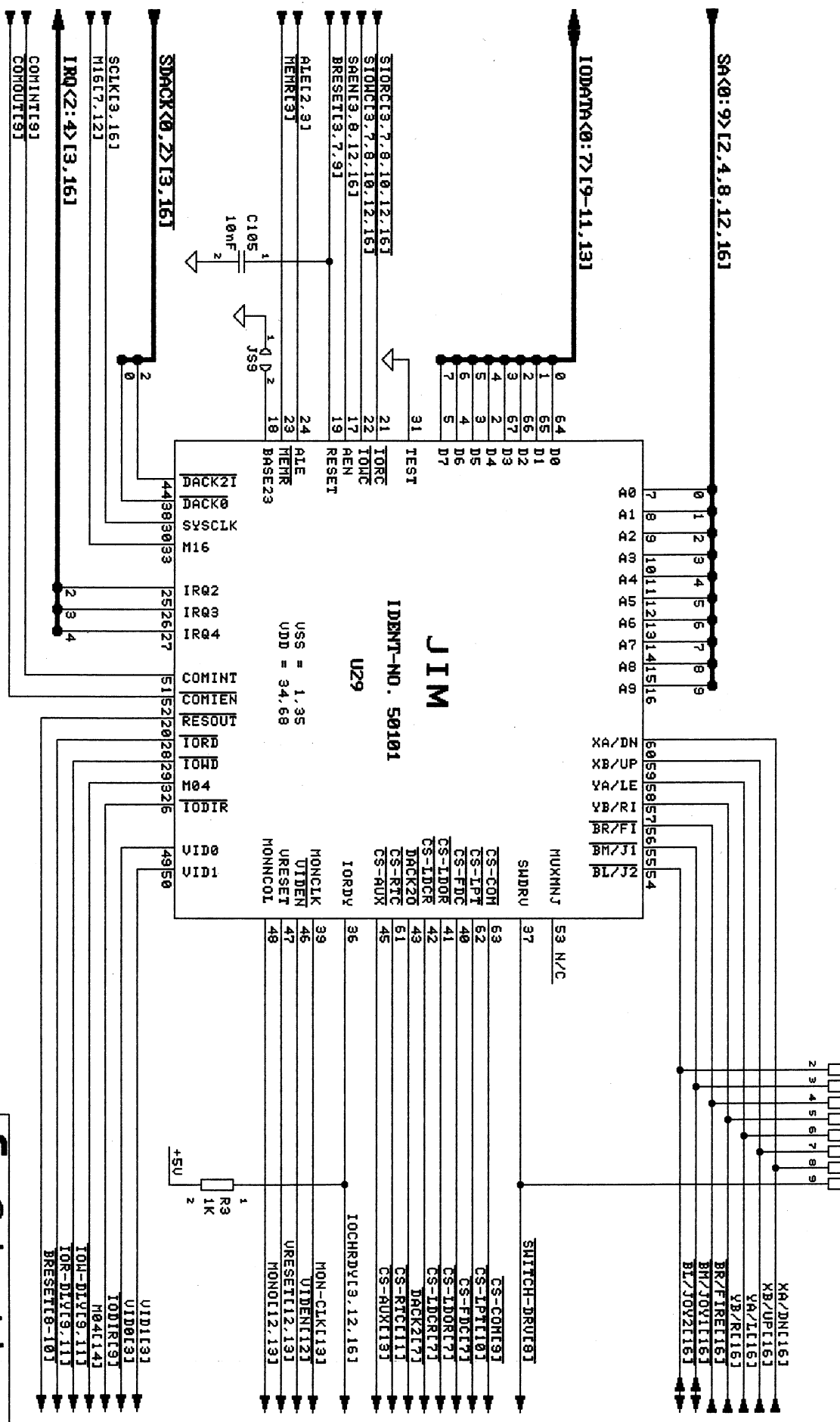
9 7 6 5 4 3 2 1

8 7 6 5 4 3 2 1

8 7 6 5 4 3 2 1

8 7 6 5 4 3 2 1

I/O-CHIP SELECT GENERATION, JOYSTICK/MOUSE INTERFACE



Schneider

DRÄHN BV:
H. ULIRICH
APPROVED:

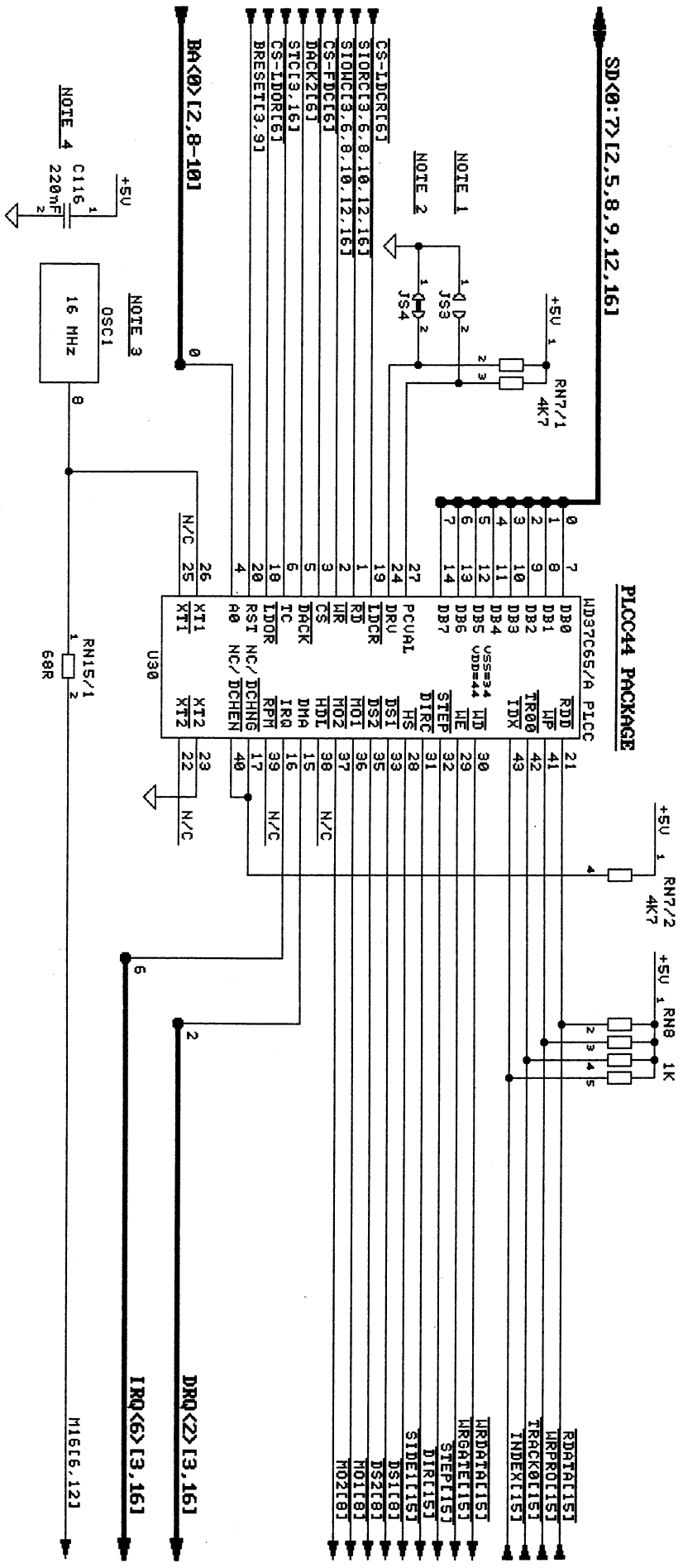
TITLE:
SCHEMATIC
EURO-PC

USED ON:	SIZE	REV
A 3	S0015	7

DATE: 05-17-88

SHEET: 6 of 17

FLOPPY DISK CONTROLLER

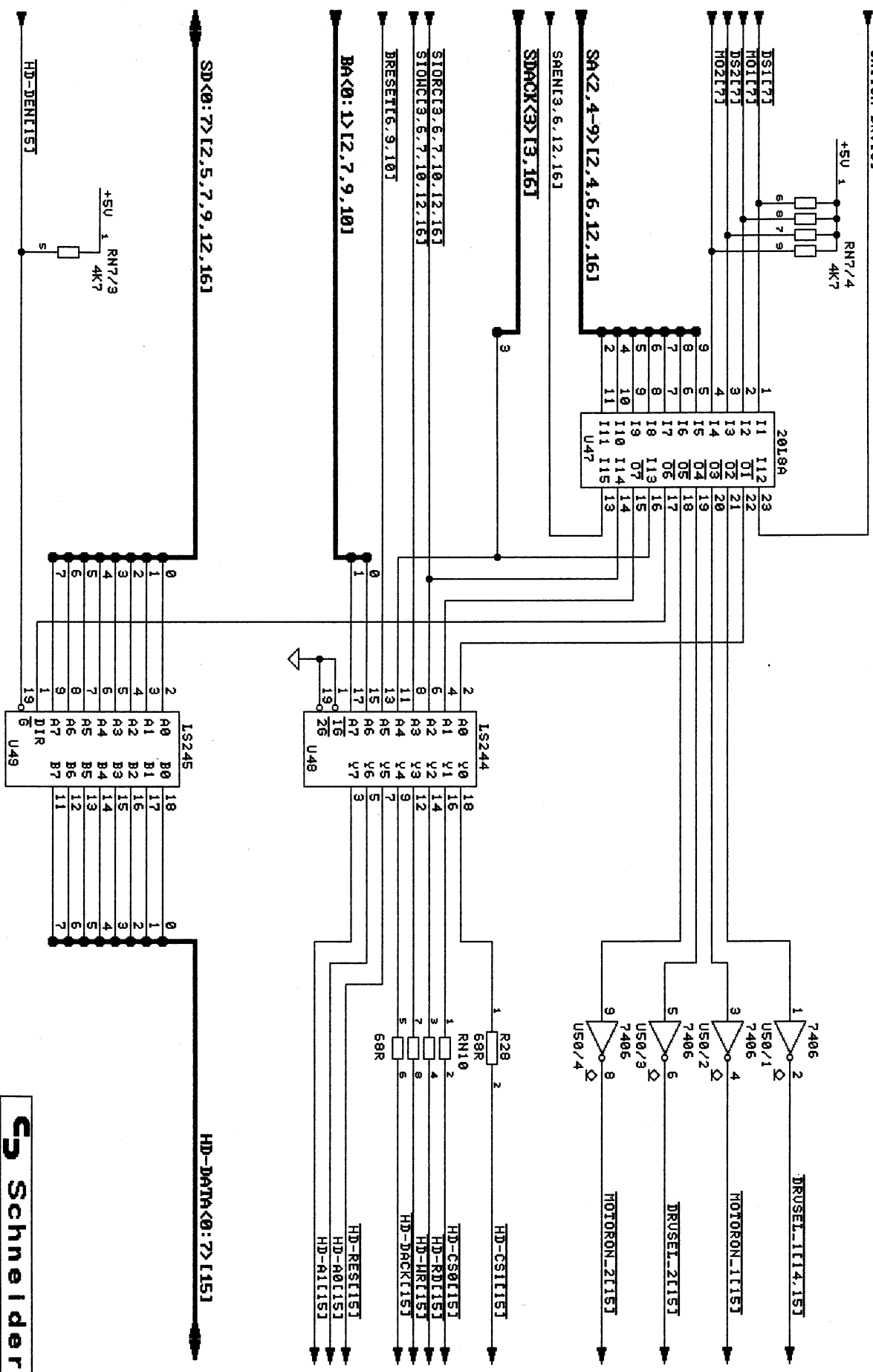


- NOTES: 1) JS3 SELECTS WRITE PRECOMP. VAL.:
- JS3 OPEN : 125 ns
 - JS3 CLOSED : 187 ns
 - 2) JS4 SELECTS 2 SPEED SPINDLE DRIVE IF CLOSED
 - 3) OSCILLATOR +- 100 ppm, CHOS OUTPUT
 - 4) C116 IS BLOCK CAP FOR OSC1

Schneider
 DRAWN BY: H. ULRICH
 APPROVED: [Signature]
 TITLE: SCHEMATIC EURO-PC
 USED ON: SIZE A3
 DATE: 05-17-88
 SHEET: 7 of 17
 REV 7

SWITCH-DRIVE

HARDISK-INTERFACE



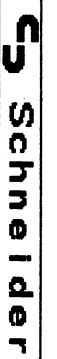
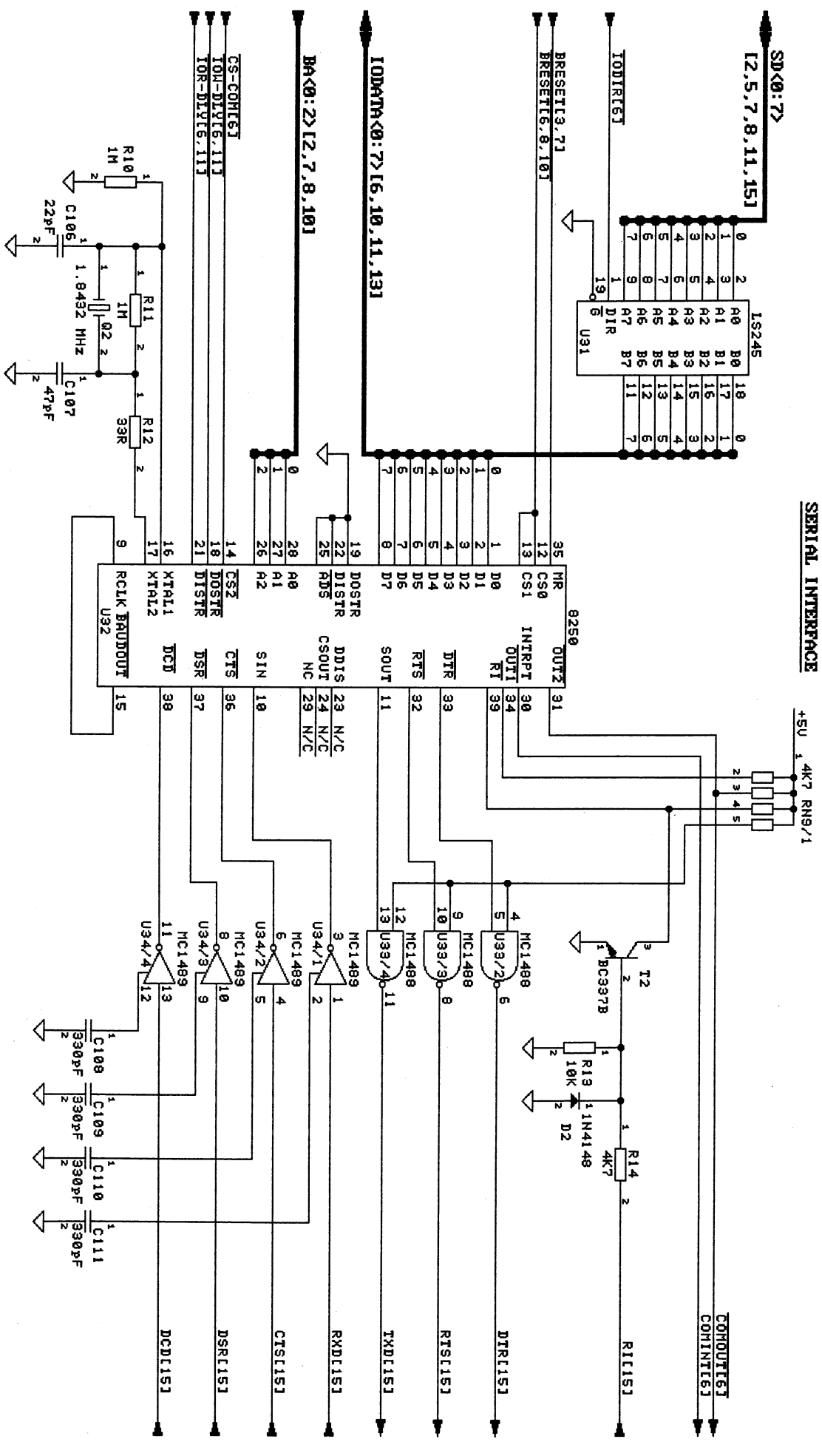
Schneider
 EPC-28

DRAWN BY: H. ULLRICH
 APPROVED: _____
 TITLE: SCHEMATIC EURO-PC

USED ON: SIZE A3
 50015
 REV 7

DATE: 05-17-88 SHEET: 8 of 17

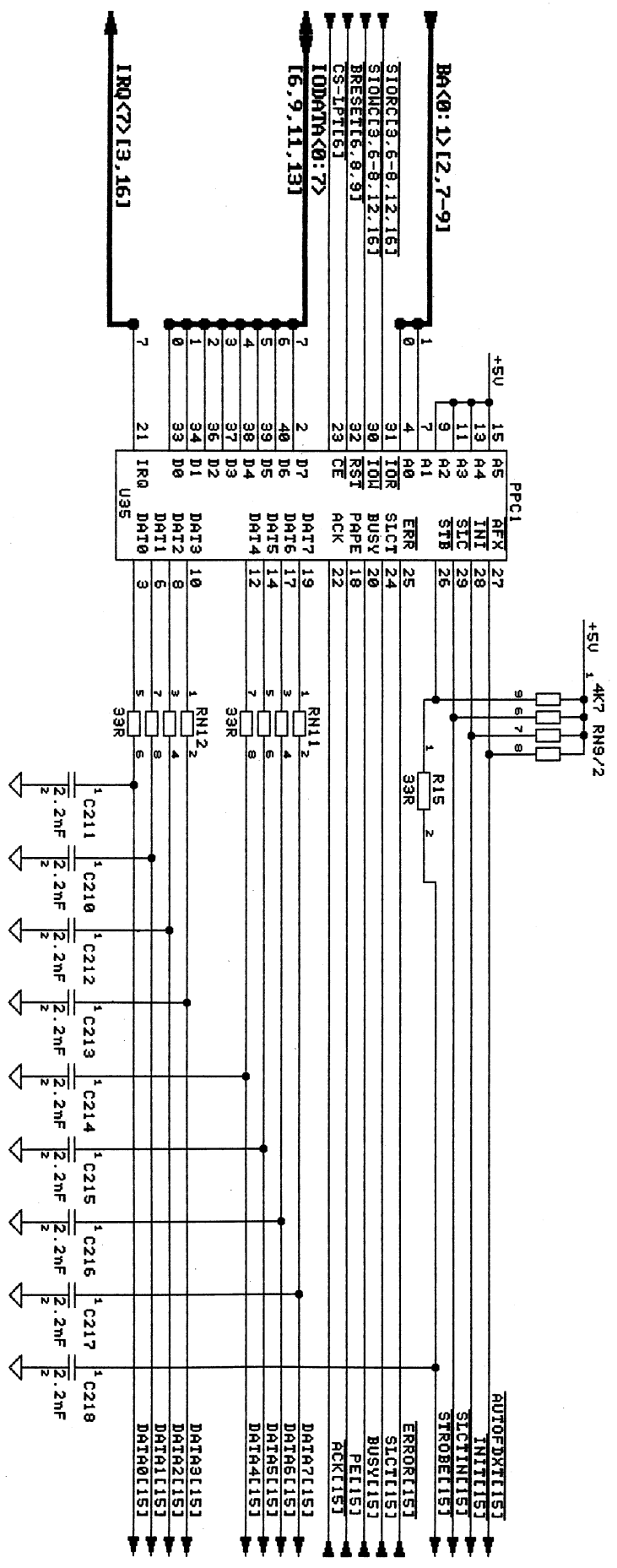
SERIAL INTERFACE



SCHNEIDER
 EURO-PC

DRAWN BY: H. ULLRICH		TITLE: SCHEMATIC	
APPROVED:		EURO-PC	
USED ON:	SIZE A3	50015	REV 7
DATE: 05-17-88	SHEET: 9 of 17		

PARALLEL INTERFACE

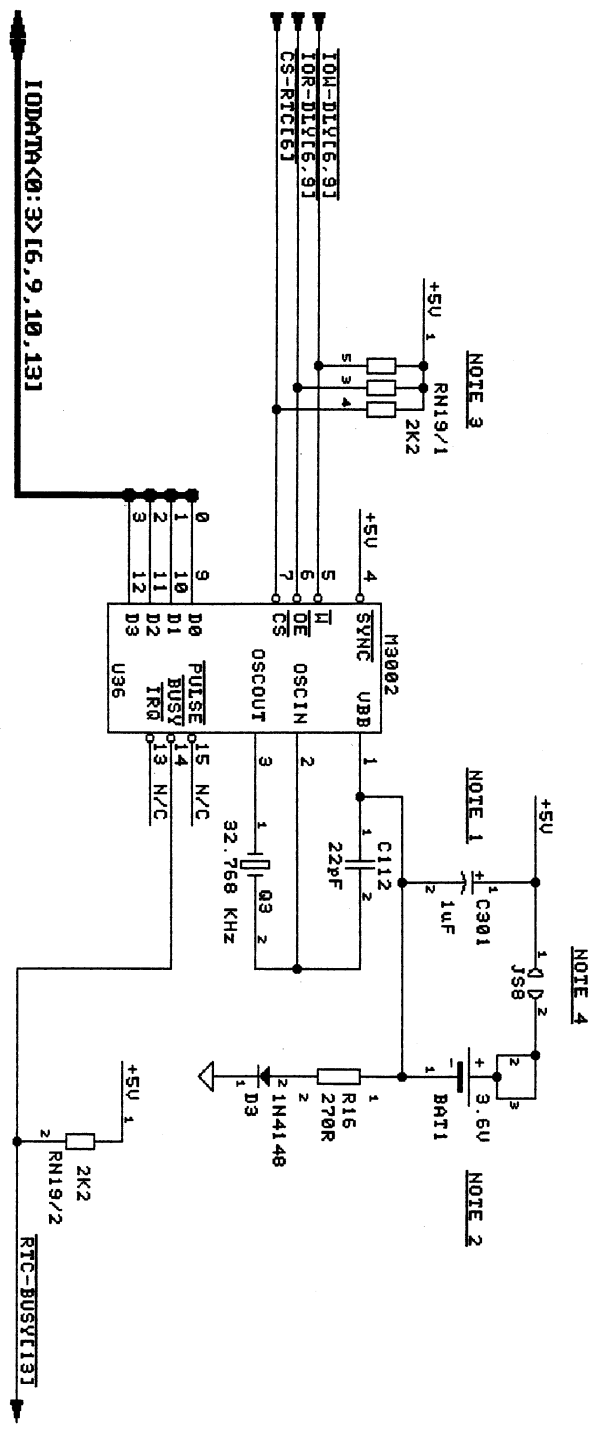


Schneider

DRAWN BY: H. ULLRICH
 APPROVED: [Signature]
 TITLE: SCHEMATIC EURO-PC

USED ON: SIZE A3
 DATE: 05-24-88
 SHEET: 10 of 17

REAL TIME CLOCK



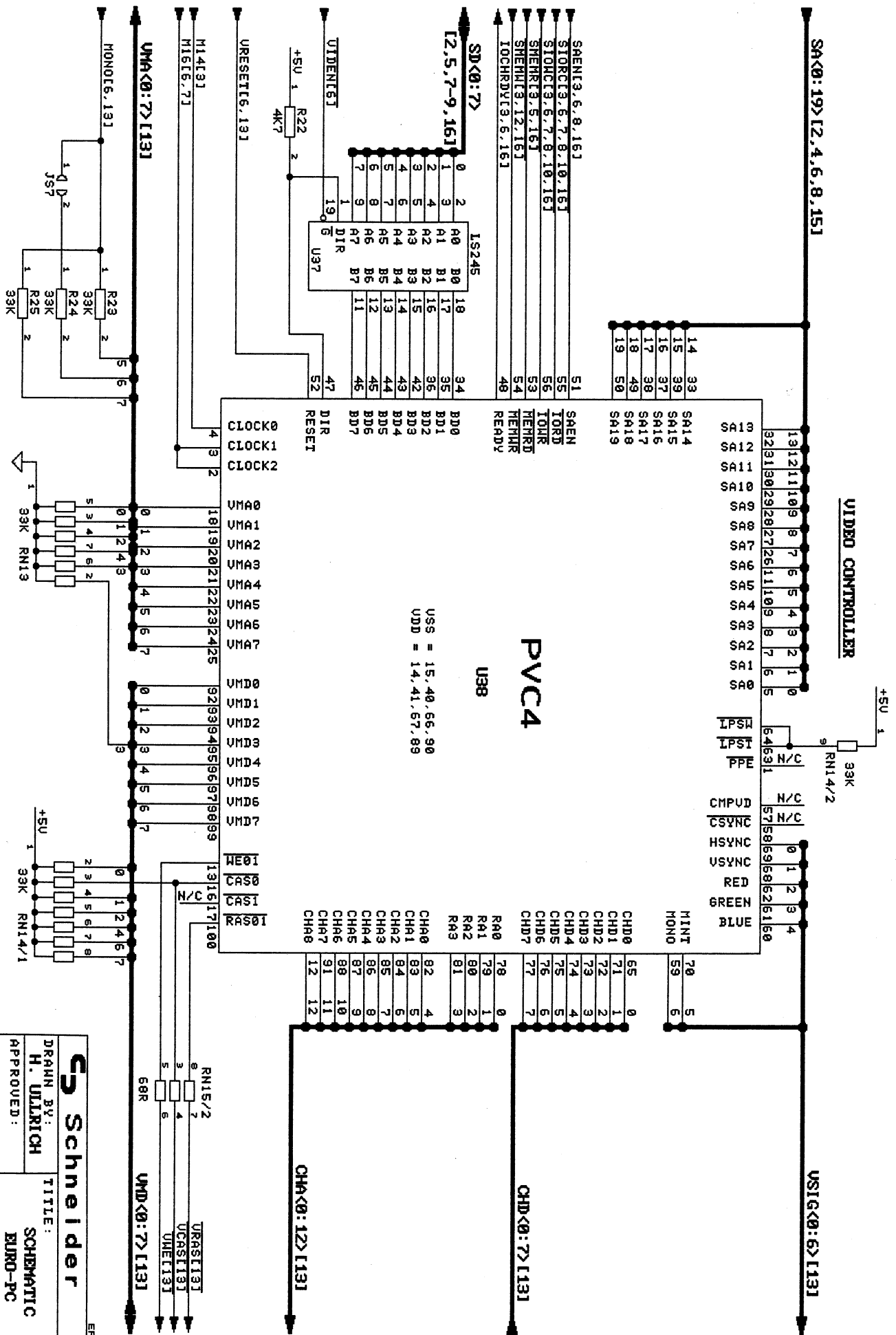
- NOTES:**
- 1) C901 IS A TANTAL TYPE IT IS ONLY ASSEMBLED IF REQUIRED.
 - 2) BAT1 IS A NIDC ACCU WITH 60MAH CAPACITY
 - 3) RN19 ONLY ASSEMBLED IF REQUIRED
 - 4) JS8 MUST BE CLOSED AFTER ASSEMBLY OF BAT1

Schneider

DRÄHN BY: H. ULLRICH
 APPROVED: SCHERMATIC
 EDOR-PC

USED ON: SIZE A3
 50015 REV 7

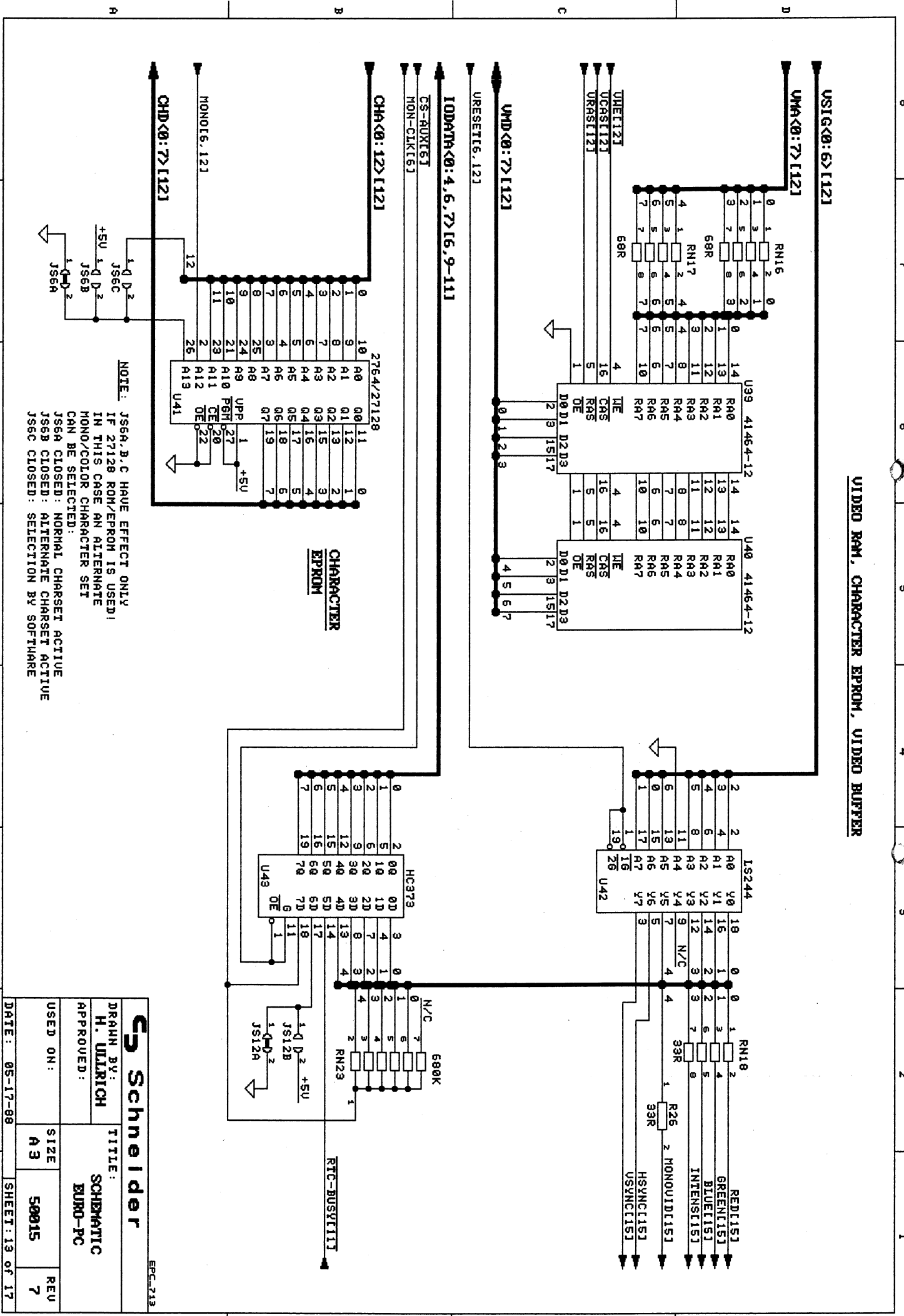
DATE: 05-17-88 SHEET: 11 of 17



Schneider
EPC-212

DRAWN BY: H. ULRICH	TITLE: SCHEMATIC EURO-PC
APPROVED:	SIZE A3
USED ON:	REV 50015 7
DATE: 05-17-88	SHEET: 12 of 17

VIDEO RAM, CHARACTER EPROM, VIDEO BUFFER



NOTE: JS6A,B,C HAVE EFFECT ONLY IF 27128 ROM/EPROM IS USED! IN THIS CASE AN ALTERNATE MONO/COLOR CHARACTER SET CAN BE SELECTED:
 JS6A CLOSED: NORMAL CHARACTER ACTIVE
 JS6B CLOSED: ALTERNATE CHARACTER ACTIVE
 JS6C CLOSED: SELECTION BY SOFTWARE

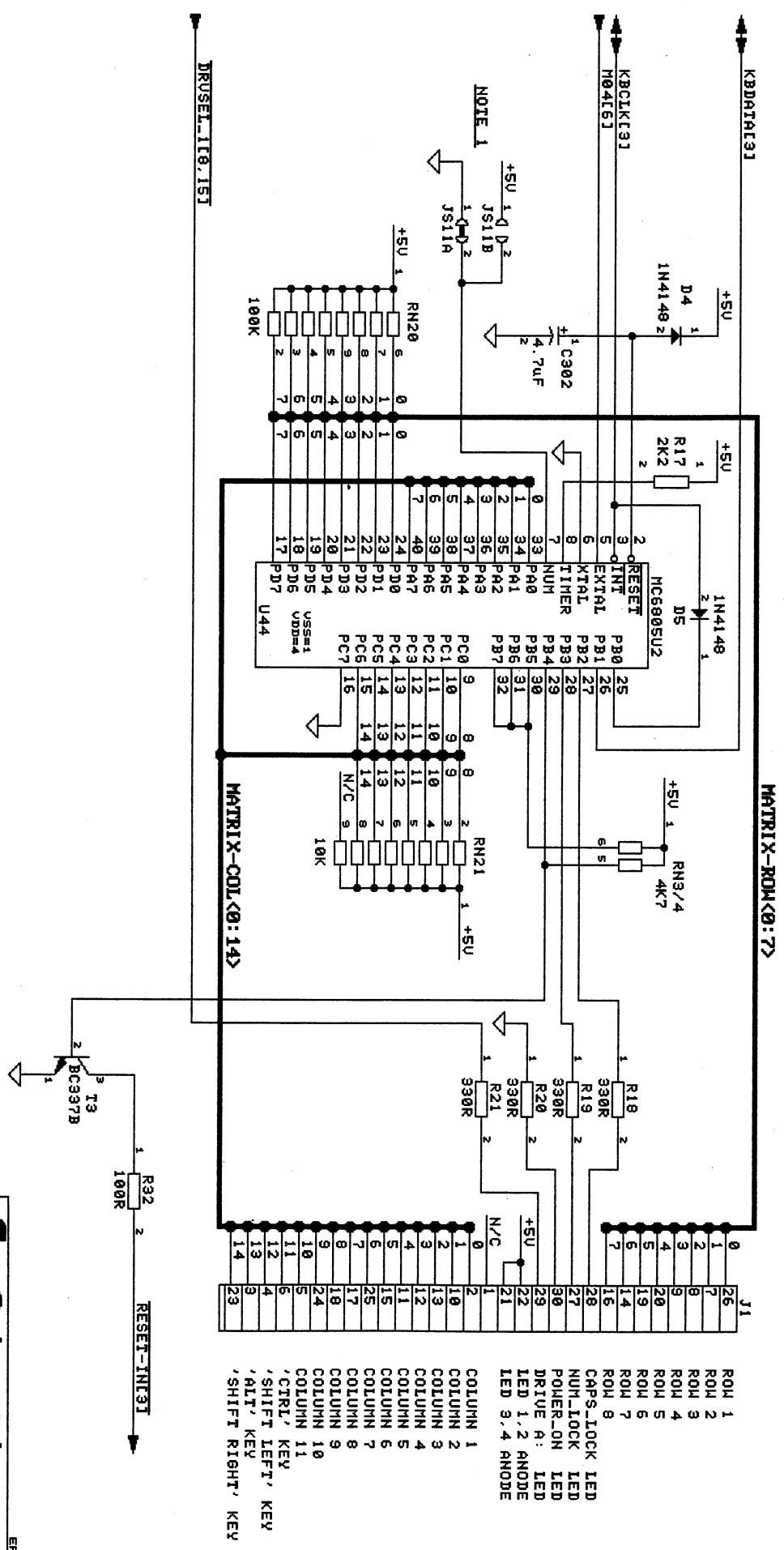
Schnelder
 TITLE: SCHEMATIC EURO-PC

DRAWN BY: H. ULLRICH
 APPROVED: _____

USED ON: SIZE A3
 DATE: 05-17-88 SHEET: 13 of 17

KEYBOARD CONTROLLER

KEYBOARD-MATRIX CONNECTOR



- ROM 1
- ROM 2
- ROM 3
- ROM 4
- ROM 5
- ROM 6
- ROM 7
- ROM 8
- caps-lock LED
- NUM-LOCK LED
- POWER-ON LED
- DRIVE A: LED
- LED 1, 2 ANODE
- LED 3, 4 ANODE
- COL 1
- COL 2
- COL 3
- COL 4
- COL 5
- COL 6
- COL 7
- COL 8
- COL 9
- COL 10
- COL 11
- CTRL' KEY
- SHIFT LEFT' KEY
- ALT' KEY
- SHIFT RIGHT' KEY

NOTES: 1) JS11A CLOSED, JS11B OPEN FOR MCE6805U2 ROM VERSION
 JS11A OPEN, JS11B CLOSED FOR MCE68705U3 EPROM VERSION

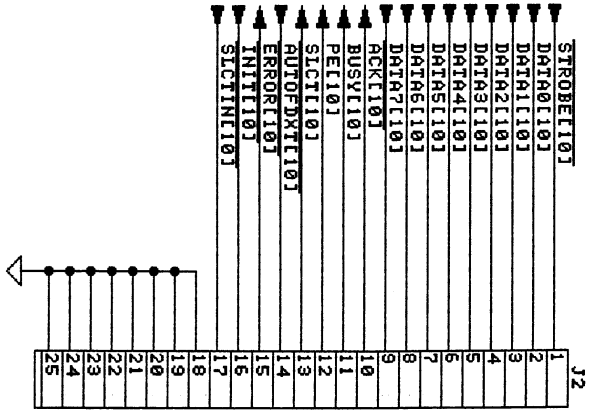
Schneider EPC-714

DRAWN BY: H. ULIRICH
 APPROVED: [Signature]
 TITLE: SCHEMATIC EURO-PC

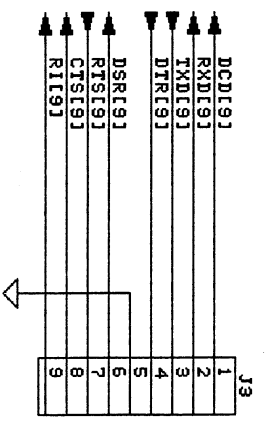
USED ON: SIZE A3
 DATE: 05-17-89
 SHEET: 14 of 17

50015 REV 7

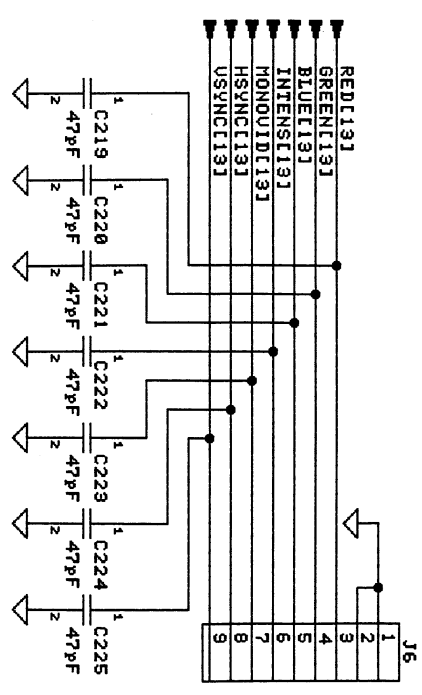
PARALLEL PORT
25 PIN SUBD CONN. FEM.



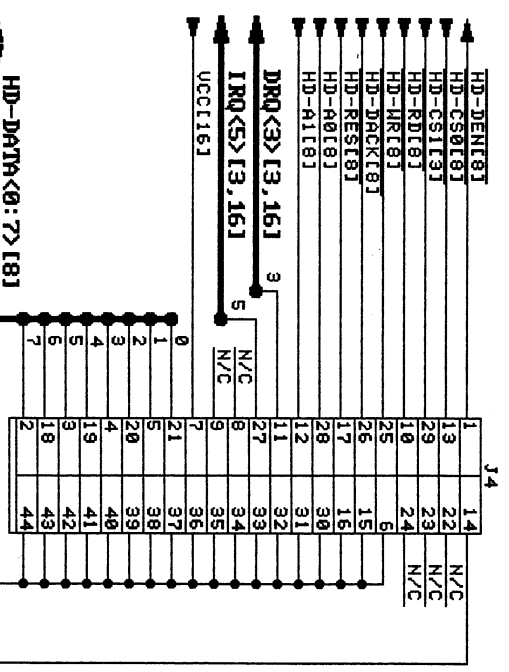
SERIAL PORT
9 PIN SUBD CONN. MALE



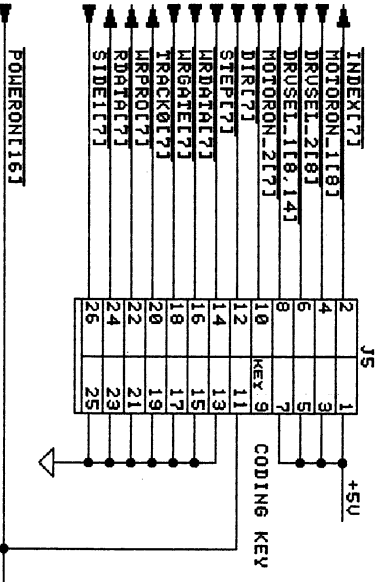
VIDEO MONO/RGB
9 PIN SUBD FEMALE



EXTERNAL HARDISK DRIVE
44 PIN MICRO-D CONN. FEMALE



INTERNAL AND EXTERNAL FLOPPY DRIVE
HEADER ASSY DUAL ROW 26 PIN



CONNECTORS #1

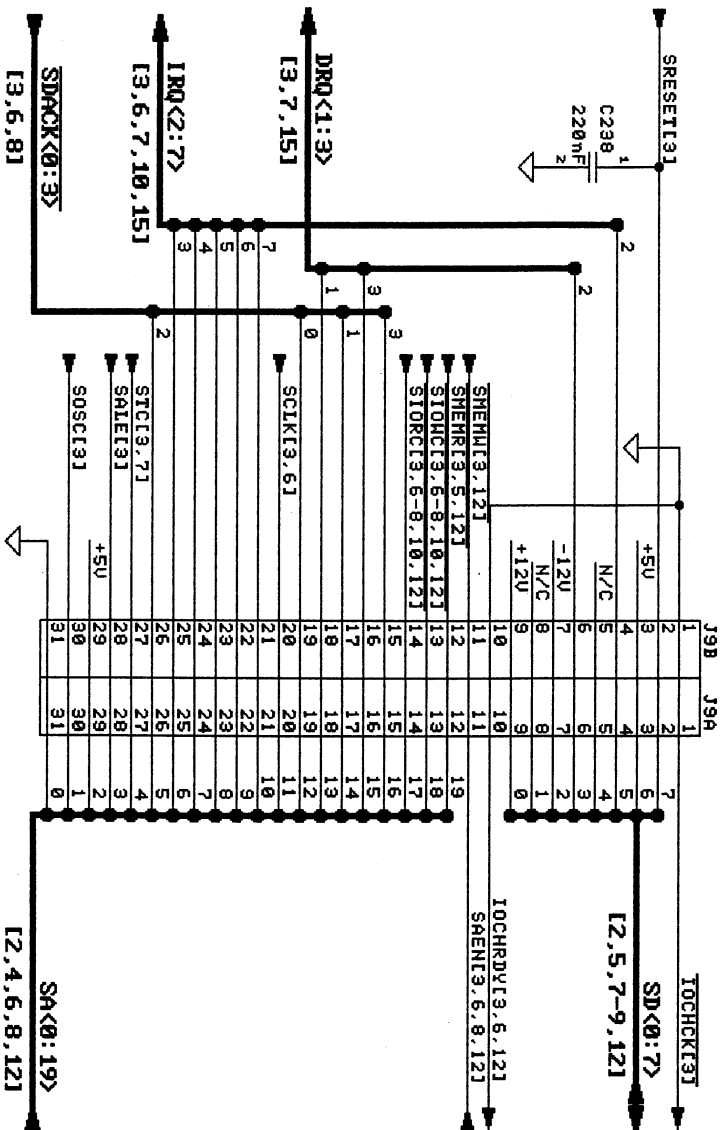
Schneider

DRAWN BY: H. ULLRICH
TITLE: SCHEMATIC EURO-PC
APPROVED:

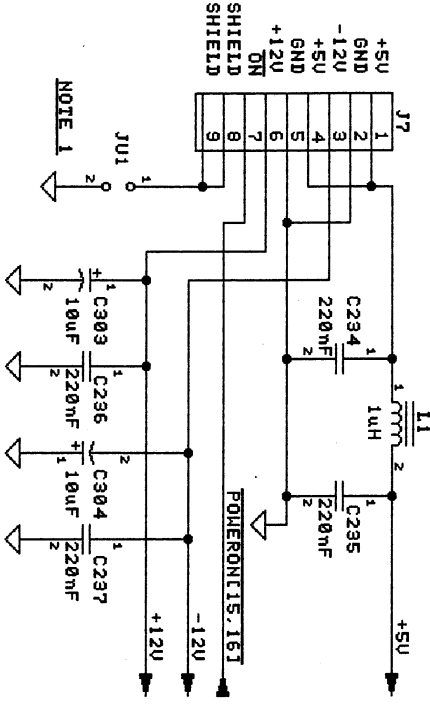
USED ON: SIZE A3
50015
REV 7

DATE: 05-17-88 SHEET: 15 of 17

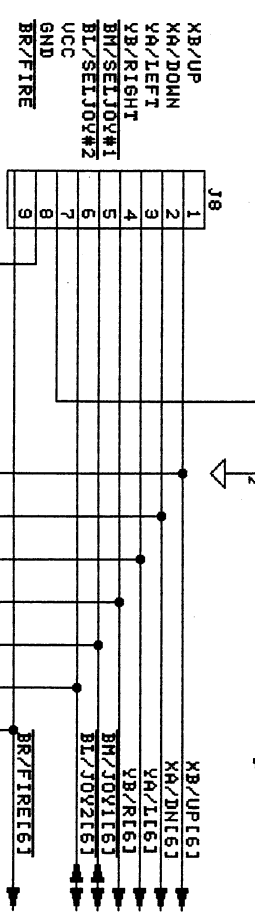
**EXPANSION-SLOT
62 PIN CARTRIDGE CONN.**



**POWER
7 PIN DIN CONN.**

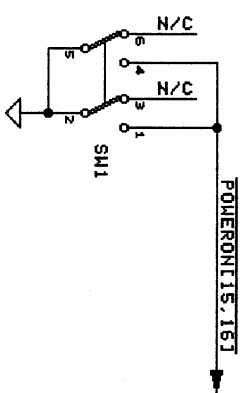


**MOUSE/JOYSTICK
9 PIN SUBD MALE**



CURRENT LIMITING PTC

POWER ON SWITCH



NOTES: 1) JUI CONNECTS SHIELD TO GND IF NECESSARY. IF NO WIRE JUMPER IS INSTALLED, A RESISTOR >=100K SHOULD BE PROVIDED INSTEAD FOR STATIC DISCHARGE

2) L1 NORMALLY SUBSTITUTED BY A WIRE JUMPER

CONNECTORS #2

Schneider EPC.216

DATE: 05-17-88

REVISION: 7

SIZE: A3

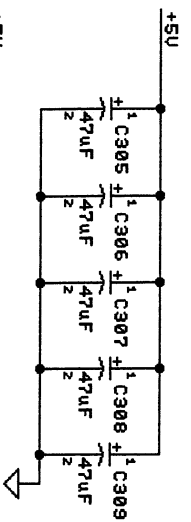
SHEET: 16 of 17

SCHEMATIC EURO-PC

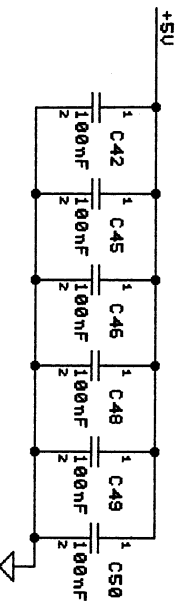
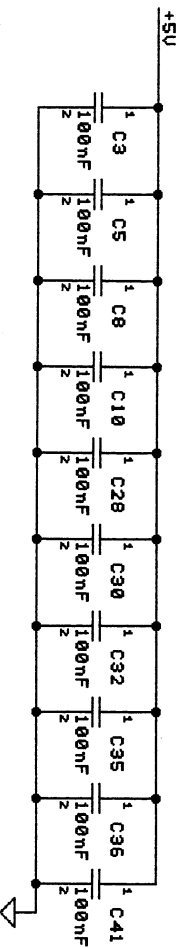
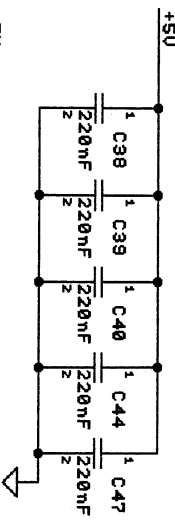
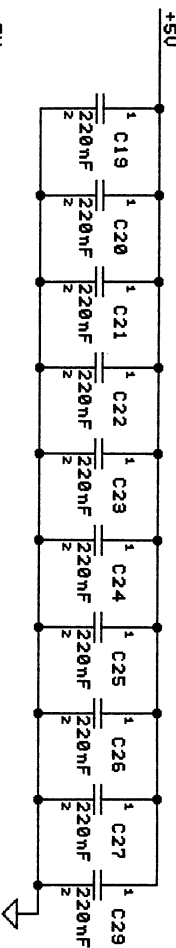
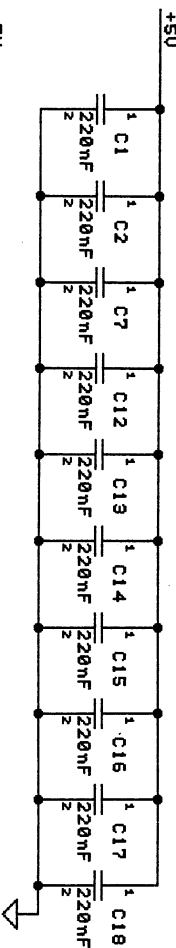
50015

REU

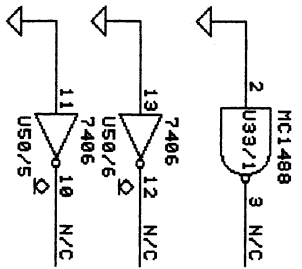
7



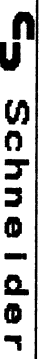
BLOCK CAPS +5V:
 5 x 47uF/16V
 25 x 0.22uF
 16 x 0.1uF



SPARE GATES:



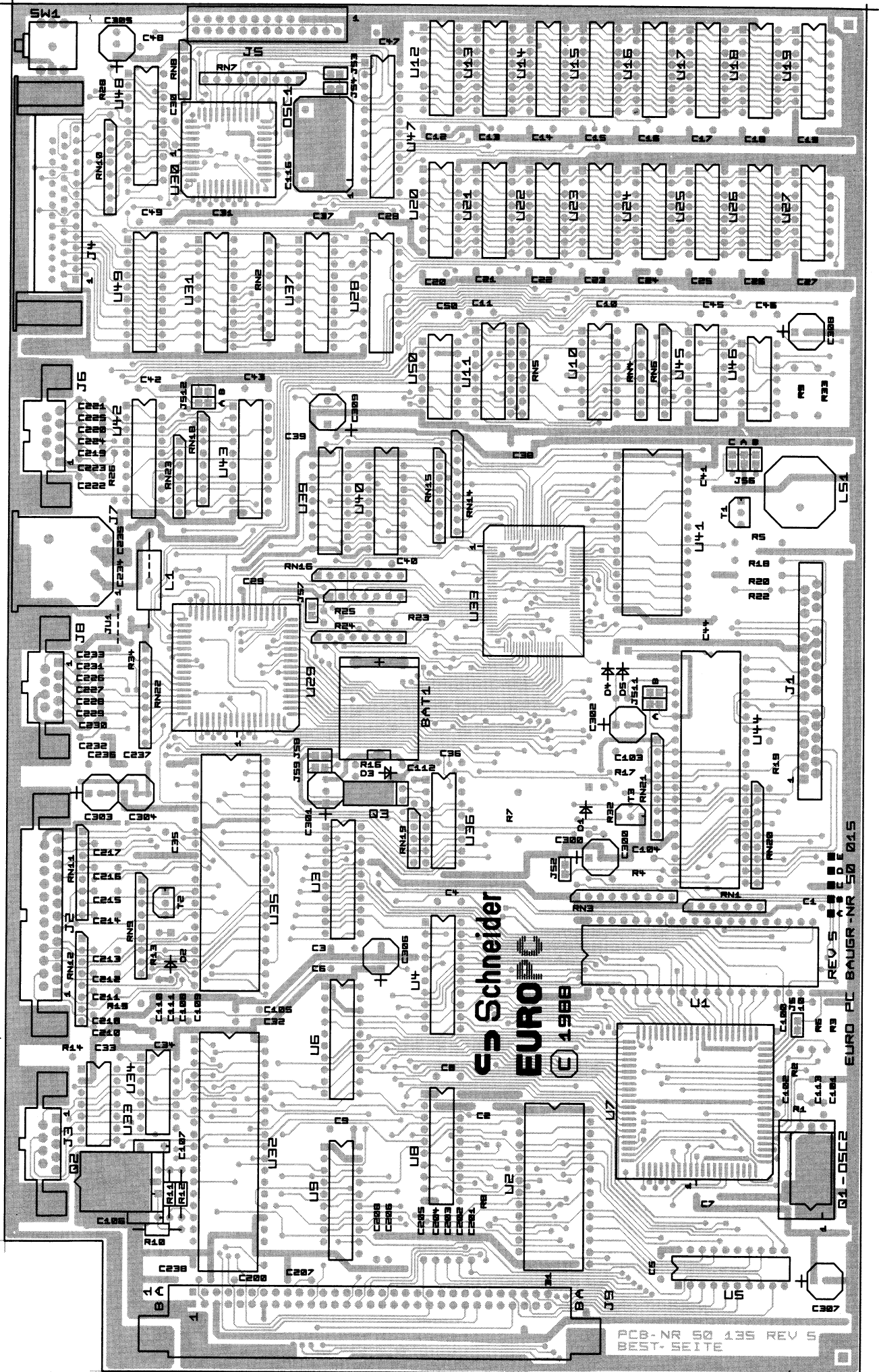
BLOCK CAPS, SPARE GATES



DRAWN BY: H. ULRICH
APPROVED:
TITLE: SCHEMATIC EURO-PC

USED ON:	SIZE	REVISION
DATE: 05-17-88	A 3	50015 7
SHEET: 17 OF 17		

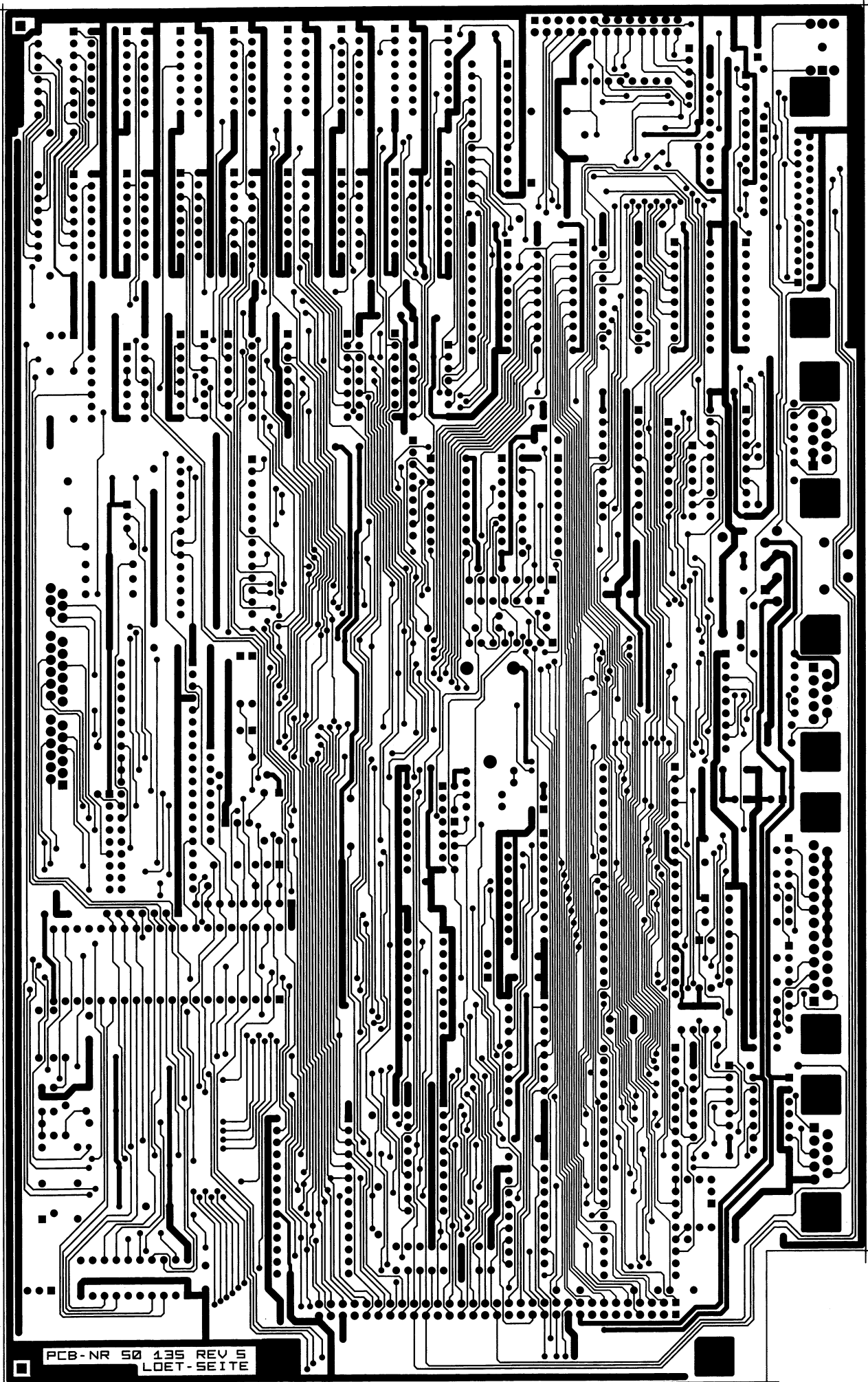
Component side
Rev. 5



PCB-NR 50 135 REV 5
WEST-SEITE

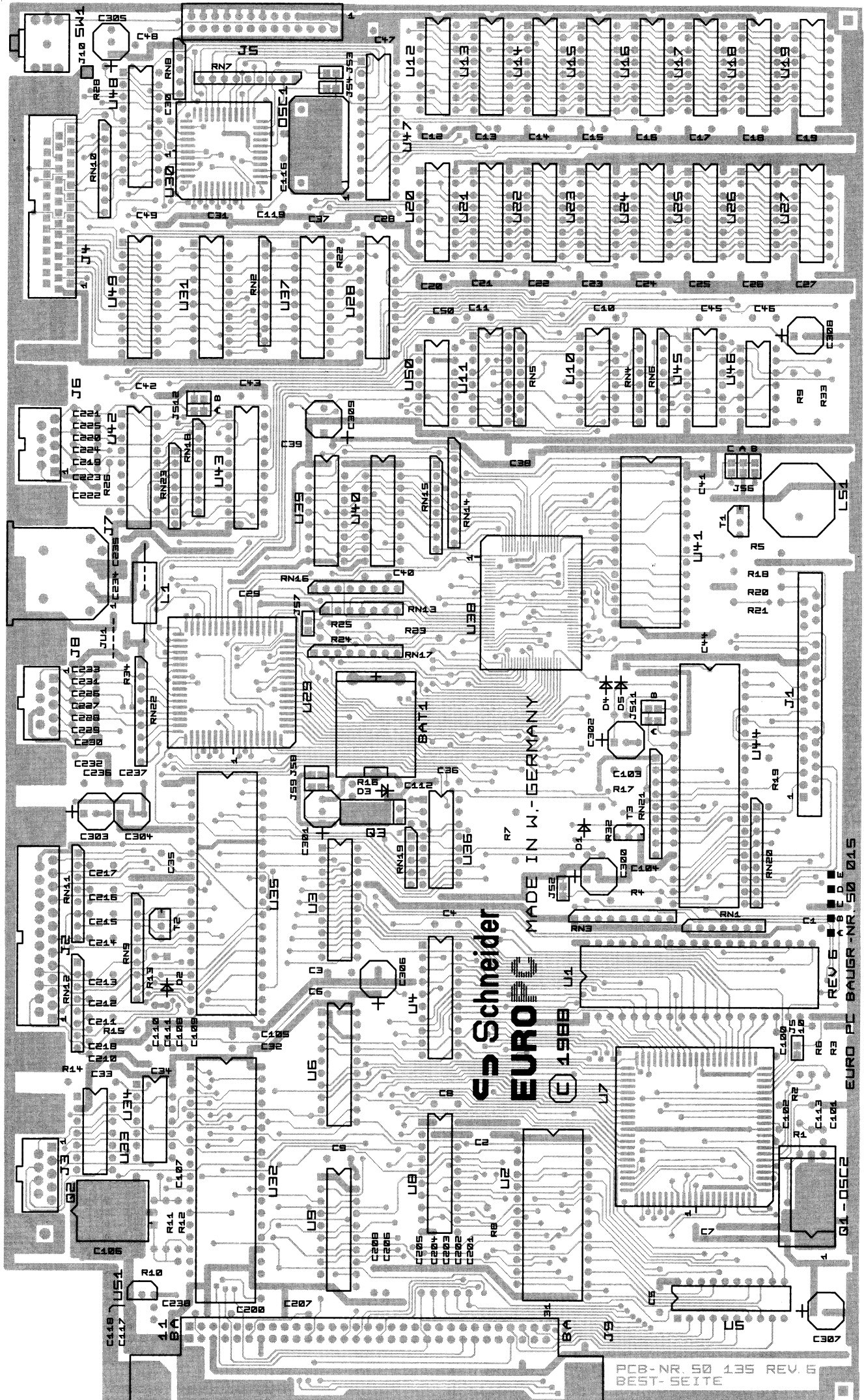
EURO-PC BAUGR-NR 50 015

Soldering side
Rev. 5



PCB-NR 50 135 REV 5
LOET-SEITE

Component side
Rev. 6



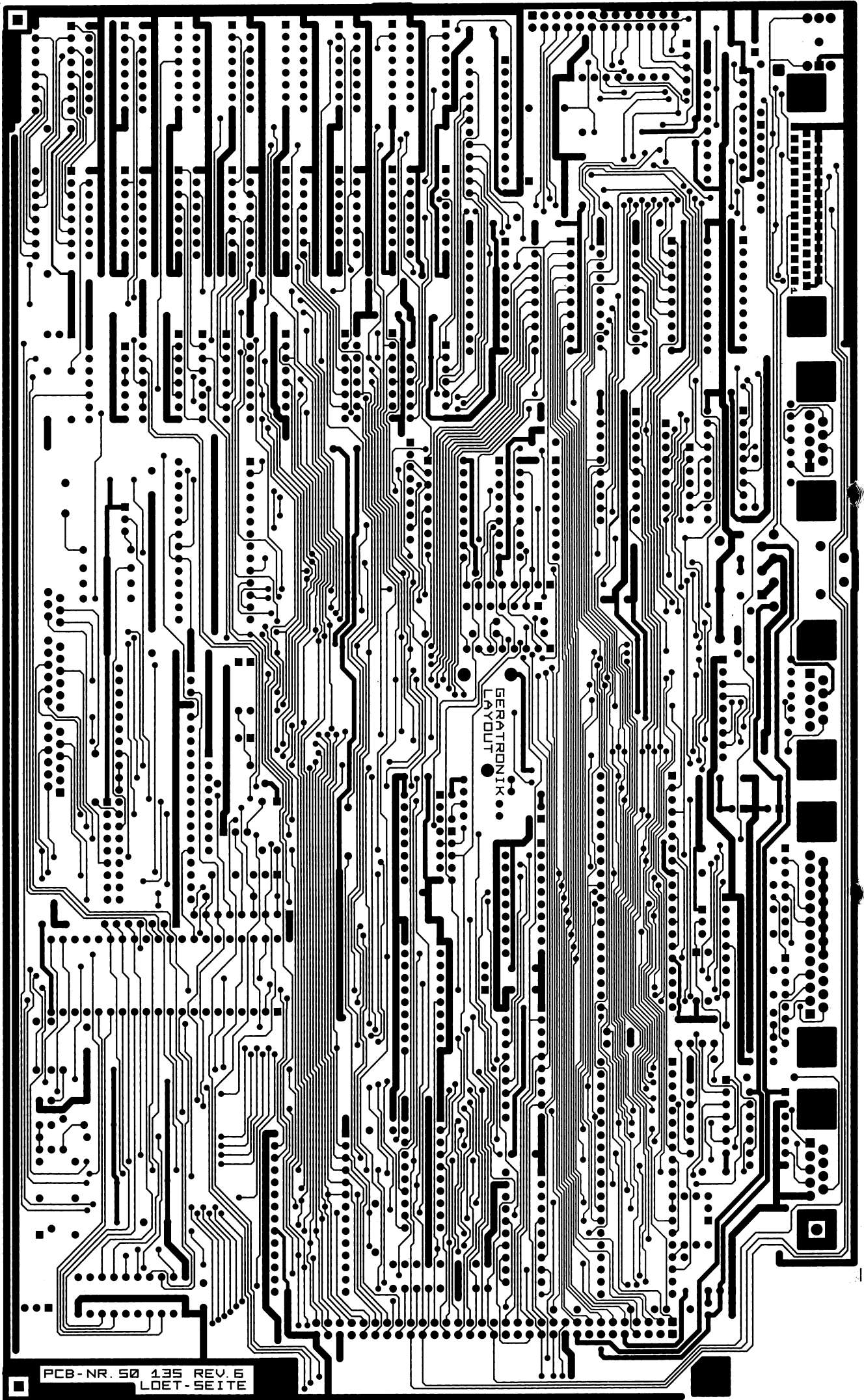
Schneider
EURO 1988

MADE IN W.-GERMANY

PCB-NR 50 135 REV. 6
BEST-SEITE

EURO PL BAUGR-NR. 50 015
REV. 6

Soldering side
Rev. 6



PCB-NR. 50 135 REV. 6
LOET-SEITE

Ersatzteilliste für Systemeinheit Euro PC
Parts List for System Unit Euro PC

Best.-Nr. Part.-No.	Bezeichnung	Description	Zeich.-Pos. Ref.-No.	Preisgruppe
IC				
50 100 00	IC SAB 80 88-1-P	IC SAB 80 88-1-P	U 1	C 9
50 111 00	IC 27256-17	IC 27256-17	U 2	C 9
50 124 00	IC 74F245	IC 74F245	U 3	A 7
50 130 00	IC 74LS373	IC 74LS373	U 4-U 6	A 7
50 103 00	IC FE2010A-ES	IC FE2010A-ES	U 7	E 3
26 354 00	IC 74LS244	IC 74LS244	U 8, U 9	B 0
50 127 00	IC 74LS158	IC 74LS158	U 10, U 11	A 7
50 109 00	IC 41256-12	IC 41256-12	U 12-U 27	D 0
50 124 00	IC 74F245	IC 74F245	U 28	A 7
50 101 00	IC JIM TC17G022AT	IC JIM TC17G022AT	U 29	D 0
50 105 00	IC WD37C65A-JM00	IC WD37C65A-JM00	U 30	D 5
34 772 00	IC 74LS245	IC 74LS245	U 31	B 0
50 107 00	IC WD8250-PL00	IC WD8250-PL00	U 32	C 4
50 120 00	IC MC1488P	IC MC1488P	U 33	A 5
50 121 00	IC MC1489P	IC MC1489P	U 34	A 5
50 106 00	IC PPC1	IC PPC1	U 35	C 3
50 108 00	IC M3002	IC M3002	U 36	C 3
34 772 00	IC 74LS245	IC 74LS245	U 37	B 0
50 104 00	IC PVC4	IC PVC4	U 38	E 5
50 110 00	IC 41464-12	IC 41464-12	U 39, U 40	D 4
50 146 00	IC 64K ROM 200nS (D)	IC 64K ROM 200nS (D)	U 41	C 3
26 354 00	IC 74LS244	IC 74LS244	U 42	B 0
50 125 00	IC 74HC373	IC 74HC373	U 43	A 7
50 102 00	IC MC6805U2	IC MC6805U2	U 44	C 3
50 127 00	IC 74LS158	IC 74LS158	U 45	A 7
40 918 00	IC 74F00	IC 74F00	U 46	A 5
50 119 00	IC PAL20L8A	IC PAL20L8A	U 47	C 2
26 354 00	IC 74LS244	IC 74LS244	U 48	B 0
34 772 00	IC 74LS245	IC 74LS245	U 49	B 0
15 241 00	IC 7406	IC 7406	U 50	A 7
50 711 00	IC 64K ROM 200nS (P)	IC 64K ROM 200nS (P)	U 41	C 3
50 712 00	IC 64K ROM 200nS (GR)	IC 64K ROM 200nS (GR)	U 41	C 3
50 713 00	IC 64K ROM 200nS (DK/N)	IC 64K ROM 200nS (DK/N)	U 41	C 3

Note: All spare parts with country index are reserved for foreign distributors only.

All 3.5" and 5.25" floppydisks must be replaced by new ones. Schneider passes no exchange price to the distributor or dealer.

Ersatzteilliste für Systemeinheit Euro PC
Parts List for System Unit Euro PC

Best.-Nr. Part.-No.	Bezeichnung	Description	Zeich.-Pos. Ref.-No.	Preisgruppe
Verschiedenes/Miscellaneous				
10 801 00	Transistor BC327B		T 1	A 6
10 802 00	Transistor BC337B		T 2, T 3	A 6
11 241 00	Diode 1N4148		D 1-D 5	A 2
44 671 00	Quarz 28,636 MHz HC-18U		Q 1	C 3
44 672 00	Quarz 1,8432 MHz HC-18U		Q 2	B 5
44 673 00	Quarz 32,768 kHz		Q 3	A 7
44 674 00	Oszillator 16 MHz		OSC 1	C 3
45 066 00	Oszillator 28,6 MHz			
44 675 00	Widerstand/Netzwerk 6 × 4K7	R Network 6 × 4K7	RN 1	A 3
44 676 00	Widerstand/Netzwerk 8 × 4K7	R Network 8 × 4K7	RN 2, RN 3	A 3
44 677 00	Widerstand/Netzwerk 4 × 68R	R Network 4 × 68R	RN 4, RN 6	A 3
44 676 00	Widerstand/Netzwerk 8 × 4K7	R Network 8 × 4K7	RN 7	A 3
44 678 00	Widerstand/Netzwerk 4 × 1K	R Network 4 × 1K	RN 8	A 3
44 676 00	Widerstand/Netzwerk 8 × 4K7	R Network 8 × 4K7	RN 9	A 3
44 677 00	Widerstand/Netzwerk 4 × 68R	R Network 4 × 68R	RN 10	A 3
44 679 00	Widerstand/Netzwerk 4 × 33R	R Network 4 × 33R	RN 11, RN 12	A 3
44 680 00	Widerstand/Netzwerk 6 × 33K	R Network 6 × 33K	RN 13	A 3
44 681 00	Widerstand/Netzwerk 8 × 33K	R Network 8 × 33K	RN 14	A 3
44 677 00	Widerstand/Netzwerk 4 × 68R	R Network 4 × 68R	RN 15-RN 17	A 3
44 679 00	Widerstand/Netzwerk 4 × 33R	R Network 4 × 33R	RN 18	A 3
44 682 00	Widerstand/Netzwerk 4 × 2K2	R Network 4 × 2K2	RN 19	A 3
44 683 00	Widerstand/Netzwerk 8 × 100K	R Network 8 × 100K	RN 20	A 3
44 684 00	Widerstand/Netzwerk 8 × 10K	R Network 8 × 10K	RN 21, RN 22	A 3
44 685 00	Widerstand/Netzwerk 6 × 680K	R Network 6 × 680K	RN 23	A 3
44 686 00	PTC PCL 0250.0	PTC PCL 0250.0	R 34	A 9
44 687 00	Spule 1 µH	Coil 1 µH	L 1	A 7
44 688 00	Schalter 2 × Um	Switch	SW 1	B 0
44 689 00	Batterie 3,6 V	Battery 3.6 V	BAT 1	B 9
44 690 00	Piepser	Buzzer	LS 1	A 9
50 137 00	Stecker FPC 30pol.	Socket FPC	J 1	B 5
50 133 00	Buchse SUB-D 25pol.	Socket SUB-D	J 2	B 2
50 131 00	Stecker SUB-D 9pol.	Socket SUB-D	J 3, J 8	A 9
50 134 00	Buchse HDD 22 44pol.	Socket HDD 22	J 4	C 7
50 139 00	Stift sterker 2 × 13pol.	Socket	J 5	A 7
50 132 00	Buchse SUB-D 9pol.	Socket SUB-D	J 6	B 0
50 140 00	Buchse DIN 7pol.	Jack DIN	J 7	A 8
50 138 00	Stecker 2 × 31pol.	Socket	J 9	C 1

CAUTION:

Danger of explosion if battery is incorrectly replaced. Replace only with the same or equivalent type recommended by the equipment manufacturer. Discard used batteries according to manufacturer's instructions.

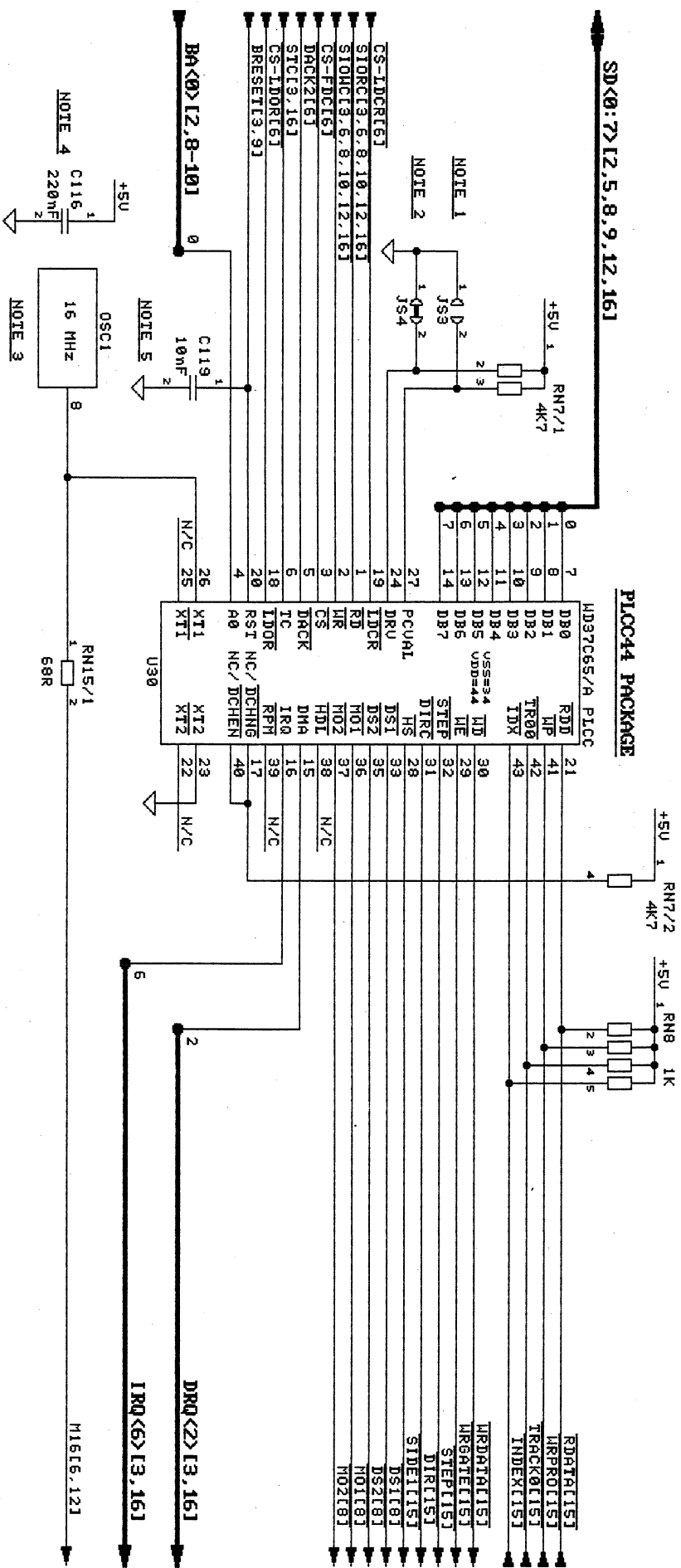
Ref.: IEC/74 (Central Office) 104.

Euro PC

Appendix A:

Different schematics Rev. 7 – Rev. 8

FLOPPY DISK CONTROLLER



NOTES: 1) JS3 SELECTS WRITE PRECOMP. VAL.:

- 1) JS3 OPEN : 125 ns
- 2) JS3 CLOSED: 187 ns
- 3) JS4 SELECTS 2 SPEED SPINDLE DRIVE IF CLOSED
- 4) OSCILLATOR +- 100 ppm, CMOS OUTPUT
- 5) C119 IS REQUIRED FOR MD37C65A/B TYPE FDC CONTROLLERS, LOCATED NEAR U30.

Schneider

DRAWN BY: H. ULRICH

APPROVED:

TITLE:

SCHEMATIC EURO-PC

USED ON:

SIZE A3

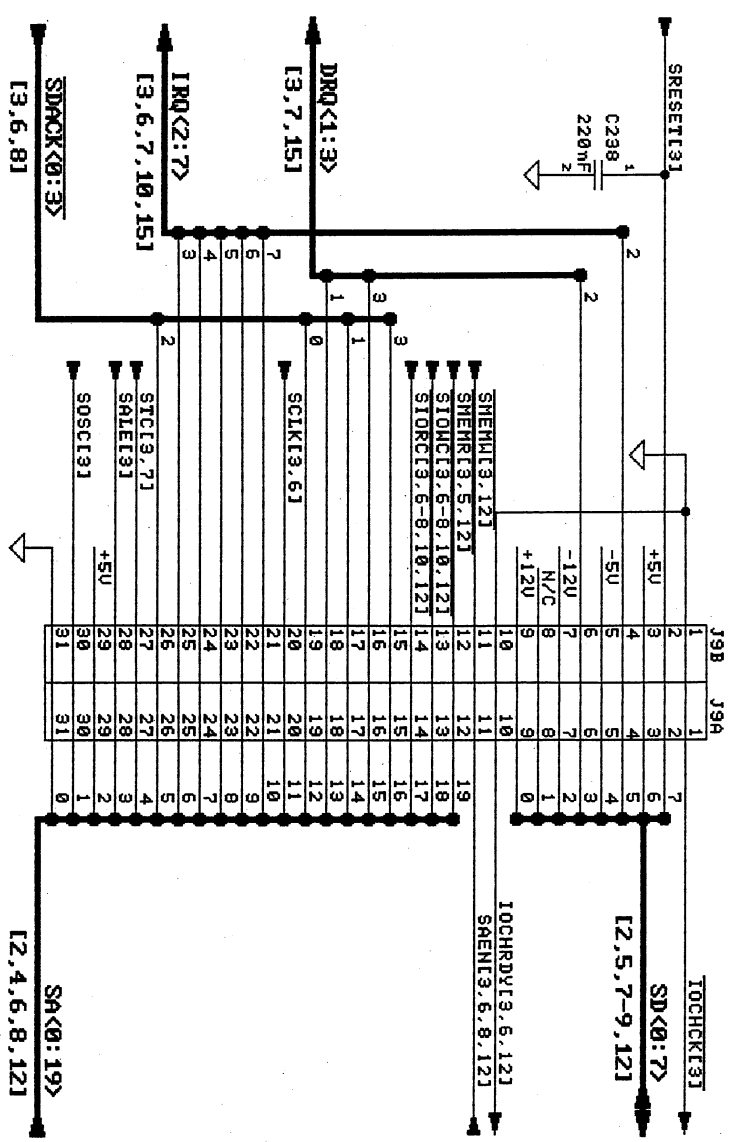
50015

REV 8

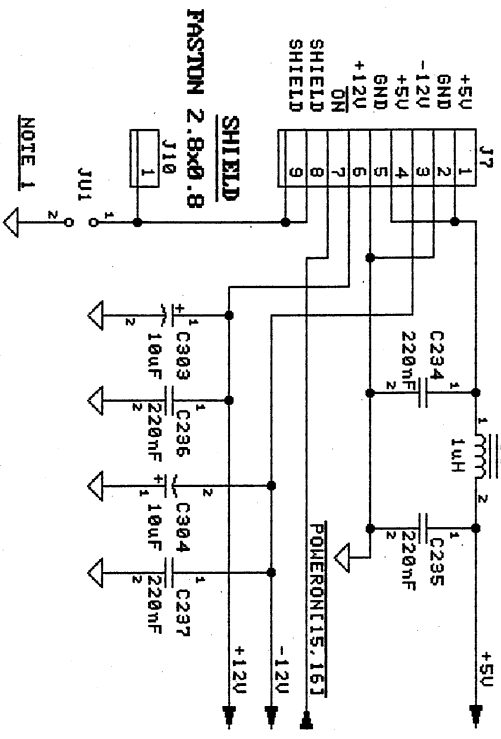
DATE: 08-02-88

SHEET: 7 of 17

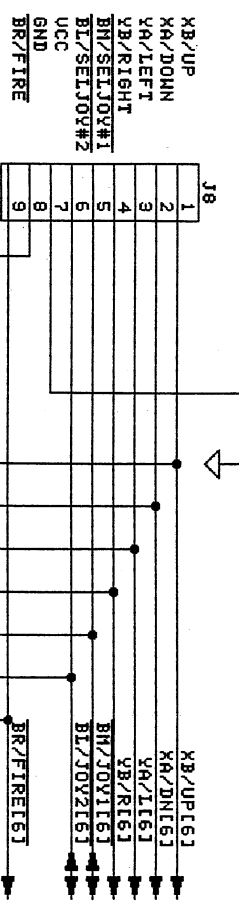
**EXPANSION-SLOT
62 PIN CARTRIDGE CONN.**



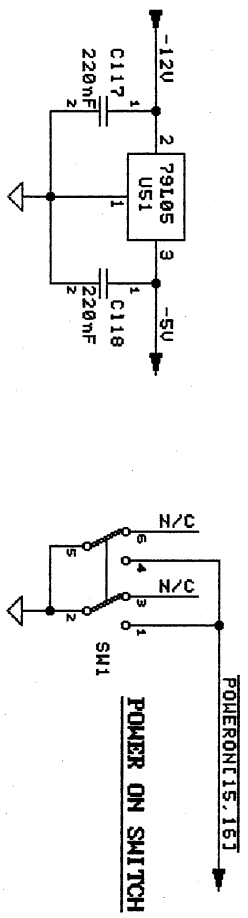
**POWER
7 PIN DIN CONN.**



**MOUSE/JOYSTICK
9 PIN SUBD MALE**



CONNECTORS #2



NOTES:

- 1) J10 CONNECTS SHIELD TO GND IF NECESSARY. IF NO WIRE JUMPER IS INSTALLED, A RESISTOR >=100K SHOULD BE PROVIDED INSTEAD FOR STATIC DISCHARGE
- 2) L1 NORMALLY SUBSTITUTED BY A WIRE JUMPER

Schneider

DRAWN BY: H. ULLRICH
APPROVED: [Signature]
TITLE: SCHEMATIC EURO-PC

USED ON: SIZE A3
58015
REV 8

DATE: 08-03-88 SHEET: 16 of 17

