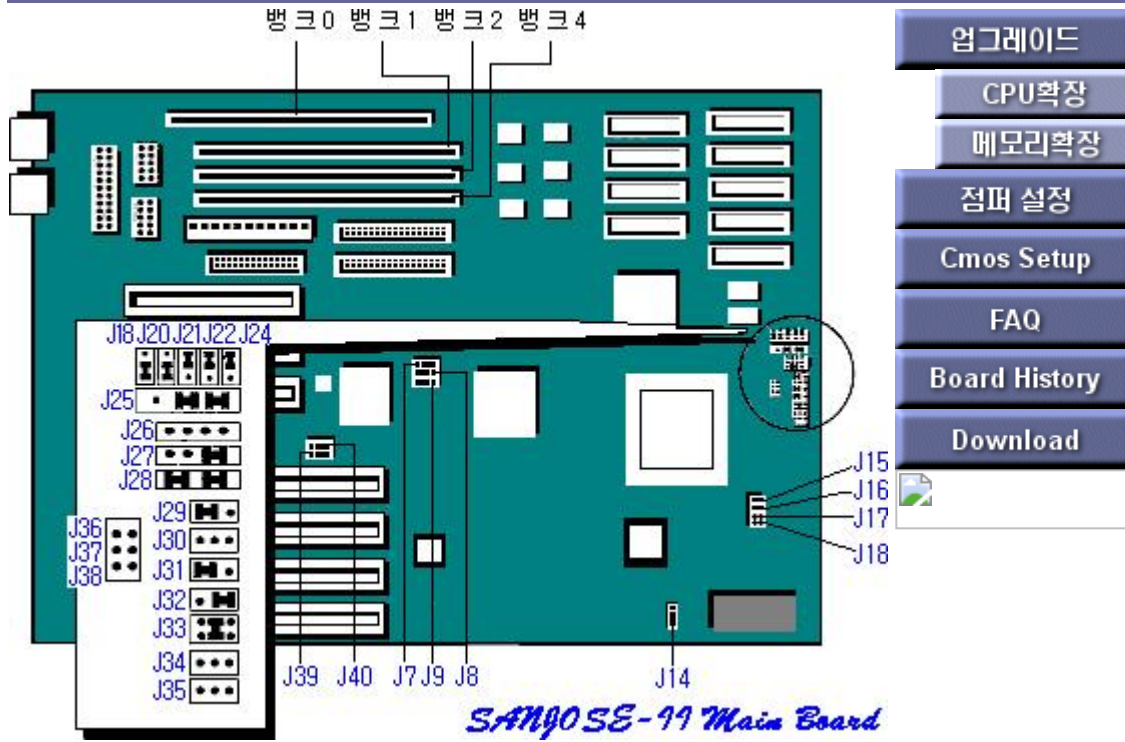


SANJOSE-II Main Board



[[Back to Previous](#)]

SANJOSE-II Jumper Settings

CPU clock setting

jumper	J25	J26	J27	J28	J29	J30
DX/DX2	OPEN	OPEN	3-4	1-2,3-4	OPEN	OPEN
SX	OPEN	OPEN	OPEN	2-3	OPEN	OPEN
P24T	2-3,4-5	1-2	2-3	1-2,3-4	1-2	1-2
CX486S	1-2,3-4	2-3	OPEN	2-3	1-2	2-3
CX486DX2,CX486DX(M7)	1-2,3-4	2-3	3-4	1-2,3-4	1-2	2-3
SL SX	2-3,4-5	OPEN	OPEN	2-3	1-2	OPEN
SL DX/DX2,DX4	2-3,4-5	OPEN	3-4	1-2,3-4	1-2	OPEN
J32: 2-3 (initial setting)	P24D: Same as SL DX2, close J36, J37, J38. AMD DX4 : Same installation as P24D. However, select 3.45V for CPU power.					

Set CPU Voltage

JP1	CPU Voltage Selection	
	+5V(486 Serise)	+3.45V(486DX4-75/100MHz), Cx 486DX2-(V)50/66MHz), 3.3V(AMD 486DX4-100MHz)
J15, J16	Close	Open
J17, J18	Open	Close

CPU clock setting

jumper	CPU clock setting (25 MHz)	CPU clock setting (33 MHz)
	SX/25,DX/25,DX2/50,DX4/75	SX/33,DX/33,DX2/66,DX4/100
J7	1-2	2-3
J8	2-3	1-2
J9	1-2	1-2

CPU vendor settings

jumper	Intel/AMD	Cyrix
J22	1-2	2-3
J24	1-2	1-2

set password

JP14	Password Selection
2-3	Enabled
1-2	Disabled

ECP Mode DMA setting

jumper	DRQ1 & DAK #1	DRQ3 & DAK #3
J39	1-2	2-3
J40	1-2	2-3

cache memory settings

type:	28-pin DIP type (processed as a socket)
speed:	15ns
expansion:	Up to 256 KB

jumper	128KB	256KB
J19	1-2	2-3
J20	1-2	2-3
J21	2-3	1-2

캐시 메모리가 설치되지 않은 경우 J19:1-2, J20 : 1-2, J21 : 2-3으로 설정 바람

SANJOSE-II CPU

CPU clock setting

jumper	J25	J26	J27	J28	J29	J30
DX/DX2	OPEN	OPEN	3-4	1-2,3-4	OPEN	OPEN
SX	OPEN	OPEN	OPEN	2-3	OPEN	OPEN
P24T	2-3,4-5	1-2	2-3	1-2,3-4	1-2	1-2
CX486S	1-2,3-4	2-3	OPEN	2-3	1-2	2-3
CX486DX2,CX486DX(M7)	1-2,3-4	2-3	3-4	1-2,3-4	1-2	2-3
SL SX	2-3,4-5	OPEN	OPEN	2-3	1-2	OPEN
SL DX/DX2,DX4	2-3,4-5	OPEN	3-4	1-2,3-4	1-2	OPEN
J32: 2-3 (initial setting)	P24D: Same as SL DX2, close J36, J37, J38. AMD DX4 : Same installation as P24D. However, select 3.45V for CPU power.					

Set CPU Voltage

JP1	CPU Voltage Selection	
	+5V(486 Serise)	+3.45V(486DX4-75/100MHz), Cx 486DX2-(V)50/66MHz), 3.3V(AMD 486DX4-100MHz)
J15, J16	Close	Open
J17, J18	Open	Close

CPU clock setting

jumper	CPU clock setting (25 MHz)	CPU clock setting (33 MHz)
	SX/25,DX/25,DX2/50,DX4/75	SX/33,DX/33,DX2/66,DX4/100
J7	1-2	2-3
J8	2-3	1-2
J9	1-2	1-2

CPU vendor settings

jumper	Intel/AMD	Cyrix
J22	1-2	2-3
J24	1-2	1-2

SANJOSE-II Memory Settings

cache memory settings

type:	28-pin DIP type (processed as a socket)
speed:	15ns
expansion:	Up to 256 KB

main memory

type:	72-pin SIMM module
speed:	70ns
Volume:	1MB, 2MB,4MB,8MB, 16MB, 32MB 64MB available
expansion:	up to 256MB

How to install

When installing two memories to [Bank 0 and Bank 1] (or [Bank 2 and Bank 3]), SIMM modules of the same type must be installed. [Memory capacity] installed in [Group A] must be greater than memory capacity in [Group B].

memory size	group A		group B	
	Bank 0 (SIMM1)	Bank 1 (SIMM2)	Bank 2 (SIMM3)	Bank 3 (SIMM4)
4M	2m	2m	--	--
	4M	--	--	--
8m	4M	4M	--	--
	8m	--	--	--
12M	4M	4M	4M	--
16M	4M	4M	4M	4M
	16M	--	--	--
24M	8m	8m	4M	4M
32m	8m	8m	8m	8m
	16M	16M	--	--
	32m	--	--	--
48M	16M	16M	8m	8m
	16M	16M	16M	--
64M	16M	16M	16M	16M
	32m	32m	--	--
	64M	--	--	--
96M	32m	32m	32m	--
128M	32m	32m	32m	32m
	64M	64M	--	--
160M	64M	64M	32m	--
192M	64M	64M	64M	--
256M	64M	64M	64M	64M

SANNJOSE-II Main B/D CMOS SETUP

Press DELKEY at bootup

Level 1	Step 2	Step 3	selection option
Setup	Standard	Date/Time	date, time setting
		Floppy A	Not / 360K 5.¼ / 1.2M 5.¼ /
		Floppy B	720KB ½ / 1.44M ½
		Master Disk	Not / 1~45 / User / ESDI / SCSI
		Slave Disk	
	Advanced	Quick Boot	On On, Off
		Typematic Rate (Chars/Sec)	30
		System Keyboard	Present Absent, Present
		Primary display	VGA/EGA
		PS/2 Mouse Support	Enable Disabled, Enabled
		System Boot Up NumLock	On On, Off
		Floppy Drive Swapping	Disabled Disabled, Enabled
		System Boot Up Sequence	A:, C: A:, C:C:, A:
		System Boot CPU Speed	High
		External Cache	Enabled Enabled, disabled
		Internal Cache	Enabled Enabled, disabled
		Password Checking	Setup Setup, Always
		Video Shadow C000, 32K	Enabled Enabled, disabled
		Shadow(C800,CC00,D000,D800,DC00), 16K	
	Adv HDD	IDE Pri. Master HDD Block xfer	Enabled Disabled, Enabled
		IDE Pri. Master HDD LBA Mode	Enabled Disabled, Enabled
		IDE Pri. Master HDD 32bit xfer	Enabled Disabled, Enabled
		IDE Pri. Slave HDD Block xfer	Enabled Disabled, Enabled
		IDE Pri. Slave HDD LBA Mode	Enabled Disabled, Enabled
		IDE Pri. Slave HDD 32bit xfer	Enabled Disabled, Enabled
		Number of HDDs in 2nd Connector	None None/HDD(+CD)/IDE CD/2HDDs
		IDE Sec. Master HDD Block xfer	Enabled Disabled, Enabled
		IDE Sec. Master HDD LBA Mode	Enabled Disabled, Enabled
		IDE Sec. Master HDD 32bit xfer	Enabled Disabled, Enabled
		IDE Sec. Slave HDD Block xfer	Enabled Disabled, Enabled
		IDE Sec. Slave HDD LBA Mode	Enabled Disabled, Enabled
		IDE Sec. Slave HDD 32bit xfer	Enabled Disabled, Enabled
	Power Mgmt	Power Management Mode Select	Enabled Disabled, Enabled
		Doze Mode Timeout	2 min 15sec ~ 512Min
		Sleep Mode Timeout	8 Min Disabled, 2Min ~ 512Min
		Suspend Mode Timeout	32 min Disabled, 2Min ~ 512Min
		Monitor VGA Activity	Disabled Disabled, Enabled
		IDE Drive Power Down	Enabled Enabled, Disabled
	Peripheral	OnBoard FDC	Enabled Disabled, Enabled
		OnBoard PCI IDE	Enabled Disabled, Enabled
		Serial Port 1	3F8H Disabled, 3F8H
		Serial Port 2	2F8H Disabled, 2F8H
		Parallel Port	378H Disabled, 378H, 278H
		Parallel Port Mode	Normal Normal, Bi-Dir, EPP, ECP
		Internal Speaker Sound	Enabled Enabled, Disabled
Utility	DetectMaster	Automatically reduces the capacity of the hard disk drive connected to the Primary IDE connector.	
	DetectSlave	Supported (hardware connected to the Secondary IDE connector is automatically recognized without setting)	
	Color Set	Set-up screen color selection	

Security	Password	Up to 6 digits can be entered
	Anti-Virus	Prevent virus infection or other data access from being 'Write' to the boot sector.
Default	Original	Modified to the step immediately before the setup change
	Optimal	Automatic setting function for optimal environment (Standard, Utility, Password are not changed)
	Fail-safe	Automatically set the most stable value for users to use the system