

PX865PE/ PX865P Series

Copyright

All rights are reserved. No part of this publication may be reproduced, transmitted, transcribed, stored in a retrieval system or translated into any language or computer language, in any form or by any means, electronic, mechanical, magnetic, optical, chemical, manual or otherwise, without the prior written permission of the company. Brands and product names are trademarks or registered trademarks of their respective companies.

The vendor makes no representations or warranties with respect to the contents herein and especially disclaim any implied warranties of merchantability or fitness for any purpose. Further the vendor reserves the right to revise this publication and to make changes to the contents herein without obligation to notify any party beforehand. Duplication of this publication, in part or in whole, is not allowed without first obtaining the vendor's approval in writing.

Disclaimer

We make no warranty of any kind with regard to the content of this user's manual. The content is subject to change without notice and we will not be responsible for any mistakes found in this user's manual. All the brand and product names are trademarks of their respective companies.

FCC Compliance Statement

This equipment has been tested and found to comply with the limits of a Class B digital device, pursuant to Part 15 of the FCC Rules. These limits are designed to provide reasonable protection against harmful interference in a residential installation. This equipment generates, uses and can radiate radio frequency energy and, if not installed and used in accordance with the instructions, may cause harmful interference to radio communications. Operation of this equipment in a residential area is likely to cause harmful interference in which case the user will be required to correct the interference at his own expense. However, there is no guarantee that interference will not occur in a particular installation.

Addendum of PX865PE Series V2.0

In the PX865PE Series V2.0, we upgraded the AC'97 Audio Codec from ALC650 to ALC655 and the LAN Controller from 3C910 to 3C920.

- If you want to update the BIOS to V2.0, please refer to version R1.17 or later. For AC'97 controller driver updates please refer to the version 3.49 or later. For LAN controller drivers updates please refer to the version 5.44 or later.

PX865PE 系列 V2.0 版本已將 AC'97 音效晶片由 ALC650 升級為 ALC655，而區域網路控制晶片也由 3C910 升級為 3C920。

- 若想要更新 BIOS 時，請使用 (含) R1.17 以後之版本；若想要更新音效晶片驅動程式，請使用 (含) 3.49 以後之版本；而區域網路控制晶片驅動程式更新，請使用 (含) 5.44 以後之版本。

PX865PE シリーズ V2.0 では、ALC650 から ALC655 までの AC'97 オーディオ・コーデック、および 3C910 から 3C920 までの LAN コントローラを更新しました。

- BIOS を更新したい場合は、バージョン R1.17 あるいはその後のバージョンを使用してください。AC'97 コントローラ・ドライバの更新については、バージョン 3.49 あるいはその後のバージョンを使用してください。LAN コントローラ・ドライバの更新については、バージョン 5.44 あるいはその後のバージョンを使用してください。

PX865PE/ PX865P Series

Intel® 82865PE/ 82865P & ICH5
Supports Socket 478 Intel® Pentium® 4 Processor

Enabling Hyper-Threading for your computer system requires ALL of the following components

- **CPU: An Intel® Pentium® 4 Processor with HT Technology**
- **Chipset: An Intel® Chipset that supports HT Technology**
- **BIOS: A BIOS that supports HT Technology must be enabled**
- **OS: An operating system that supports HT Technology**

For more information on Hyper-Threading Technology, go to:
<http://www.intel.com/info/hyperthreading>

Package Contents:

- PX865PE/ PX865P Series mainboard x 1
- IDE ATA100 Cable x 1 (optional)
- FDC Cable x 1 (optional)
- USB 4-Port Bracket x 1 (optional)
- SATA Power Cord x 1 (optional)
- SATA Cable x 1 (optional)
- SPDIF & Front Audio dual-function Bracket x 1 (optional)
- Installation and Setup Driver CD x 1
- PX865PE/ PX865P Series User Manual x 1

Dimensions (ATX form-factor):

- 244mm x 293mm (WxL)

Contents

CHAPTER 1. GETTING STARTED	1
INTRODUCTION.....	1
SPECIFICATION	2
QUICK CONTENT TABLE	6
CONFIGURATION	7
Layout of PX865PE PRO	7
Layout of PX865PE.....	8
Layout of PX865P PRO.....	9
Layout of PX865P	10
HARDWARE INSTALLATION	11
CPU Processor Installation.....	11
Memory Installation	12
Back Panel Configuration.....	14
Front Panel Indicator: SW/LED、PWRLLED.....	16
Connectors	17
Headers & Jumpers.....	18
Audio Connectors	21
Slots	22
Power Supply Attachments.....	23
CHAPTER 2. BIOS SETUP.....	24
INTRODUCTION.....	24
MAIN MENU	26
ADVANCED BIOS FEATURES.....	28
INTEGRATED PERIPHERALS.....	35
POWER MANAGEMENT.....	40
HARDWARE MONITOR	43
LOAD DEFAULTS.....	44
EXIT MENU.....	45
CHAPTER 3: SOFTWARE SETUP.....	46
SOFTWARE INSTALLATION.....	46
CHAPTER 4: TROUBLESHOOTING	48
APPENDIX I: OVER CLOCKING	51
APPENDIX II: 5.1 CHANNEL SETUP	56

Chapter 1. Getting Started

Introduction

Congratulations on choosing the PX865PE/ PX865P Series mainboard! The PX865PE series includes the PX865PE PRO and PX865PE. The PX865P series includes the PX865P PRO and PX865P. These are based on the 82865PE or 82865P Northbridge chipset and the ICH5 Southbridge chipset. It supports Intel® Pentium® 4 Processors with a FSB (Front Side Bus) frequency of 400/ 533/ 800 MHz for PX865PE series. And it supports Intel® Pentium® 4 Processors with a FSB (Front Side Bus) frequency of 400/ 533 MHz for PX865P series.

The PX865PE/ PX865P series provides 4 DIMM slots using 184 pin DDR SDRAM with a total capacity of up to 4GB. You can install unbuffered & non-ECC DDR400/ 333/ 266 (PC3200/ 2700/ 2100) DIMMs to PX865PE series. And you can install unbuffered & non-ECC DDR333/ 266 (PC2700/ 2100) DIMMs to PX865P series. These all support dual channel data Bus for the DIMM slots.

The PX865PE/ PX865P series provide one 8X/ 4X AGP Slot that use 0.8V or 1.5V AGP cards.

The PX865PE/PX865P series include built in IDE facilities that support Ultra DMA 66/100 BMIDE and PIO Modes. These also include built in Serial ATA facilities that supports SATA 150.

The PX865PE/ PX865P series come with an AC'97 Sound Codec (ALC650) which supports high quality 6 channels audio (Super 5.1 Channel Audio Effect). It also supports Sony/ Philips Digital Interface (S/PDIF)

The PX865PE/ PX865P series come with eight USB 2.0 ports. These also include an infrared header.

Besides the PX865PE PRO and the PX865P PRO also come with a LAN Chip (3COM 3C910) and provides a back panel LAN port.

The company's 3 Year Limited Warranty for this product covers both labor costs and replacement parts during the 1st year. Only labor costs are covered during the 2nd and 3rd years (replacement parts will be charged during the 2nd and 3rd years).

All of the information in this manual only for reference. This specification is subject to change without notice.

Specification

CPU:

- Supports Socket 478 Pentium® 4 processor (Northwood/ Prescott)
- Supports Hyper Threading Technology

Speed:

- 400/ 533/ 800 MHz Front Side Bus frequency (For PX865PE series)
- 400/ 533 MHz Front Side Bus frequency (For PX865P series)
- 33MHz, 32 bit PCI interface (PCI 2.3 compliant)
- 66MHz AGP 3.0 compliant interface that supports 8X/4X data transfer modes (0.8V or 1.5V)

Chipset:

- Northbridge Chip (MCH) – Intel 82865PE or Intel 82865P
- Southbridge Chip (ICH) – Intel ICH5
- I/O Controller – Winbond W83627HF
- AC'97 Codec – Realtek ALC650
- LAN Controller – 3COM 3C910

DRAM Memory:

- Supports DDR400 (PC3200)/ DDR333 (PC2700)/ DDR266 (PC2100) SDRAM DIMMs for PX865PE series
- Support DDR333 (PC2700)/ DDR266 (PC2100) SDRAM DIMMs for PX865P series
- Supports 64 MB/ 128 MB/ 256 MB/ 512 MB/ 1 GB unbuffered & non-ECC DIMM modules
- Supports memory modules with a total capacity of 4 GB (see memory installation section for more details)
- Supports dual-channel data bus
- Supports only x8, x16, DDR devices with four banks

Green Functionality:

- Supports Phoenix-Award BIOS™ power management functionality
- Wakes from power saving sleep mode with any keyboard or mouse activity

PX865PE/ PX865P Series

Shadow RAM:

- These mainboard equipped with a memory controller providing shadow RAM and support for ROM BIOS

BUS Slots:

- AGP slot (AGP3.0, 0.8/ 1.5V) x 1
- 32-bit PCI bus slot x 5

Flash Memory:

- Supports flash memory functionality
- Supports ESCD functionality

Hardware Monitor Function:

- Monitors all fan Speeds
- Monitors System Voltage

Infrared:

- Supports IrDA Version 1.0 SIR Protocol with a maximum baud rate of up to 115.2 Kbps
- Supports SHARP ASK-IR Protocol with maximum baud rate of up to 57600 bps

3COM LAN Chip on board: (only for PX865PE PRO & PX865P PRO)

- Provides Auto-negotiation (NWAY) function of full/ half duplex operation for both 10 Mbps and 100 Mbps
- Supports PC99 wake on LAN

AC'97 Sound Codec Onboard:

- High performance CODEC with high S/N ratio (>90 dB)
- Compliant with AC'97 2.2 specification
- 6-channel playback capability (Super 5.1 Channel Audio Effect)
- 3D Stereo enhancement
- Sony/ Philips Digital Interface (S/PDIF)

Universal Serial Bus:

- Supports up to eight USB ports for USB interface devices
- Supports USB 2.0 Enhanced Host Controller Interface (EHCI) and dual USB 1.1 Open Host Controller Interface (OHC1)

I/O facilities:

- One multi-mode Parallel Port capable of supporting the following specifications:
 1. Standard & Bi-direction Parallel Port
 2. Enhanced Parallel Port (EPP)
 3. Extended Capabilities Port (ECP)
- Supports two serial ports, 16550 UART
- Supports Infrared Data Transmission using IrDA
- Supports PS/2 mouse and PS/2 keyboard
- Supports 360 KB, 720 KB, 1.2 MB, 1.44 MB, and 2.88 MB floppy disk drives
- MIDI port compatible
- Game port compatible

IDE Facilities:

- Supports Ultra ATA 66, Ultra ATA 100, BMIDE and PIO modes
- Supports IDE interface with CD-ROM
- Supports high capacity hard disk drives
- Supports installation of up to 4 drives, with separate IDE connections for Primary and Secondary connectors

Serial ATA facilities:

- Compatible with SATA Spec 1.0
- Supports Serial ATA specification of 150 MB/sec transfers

BIOS:

- Phoenix-Award™ BIOS
- Supports APM1.2
- Supports ACPI power management

PX865PE/ PX865P Series

AGP protection:

- This mainboard provides an AGP slot for 0.8V/ 1.5V AGP cards. The AGP protection function is to protect the mainboard and AGP cards if a 3.3V card is installed.

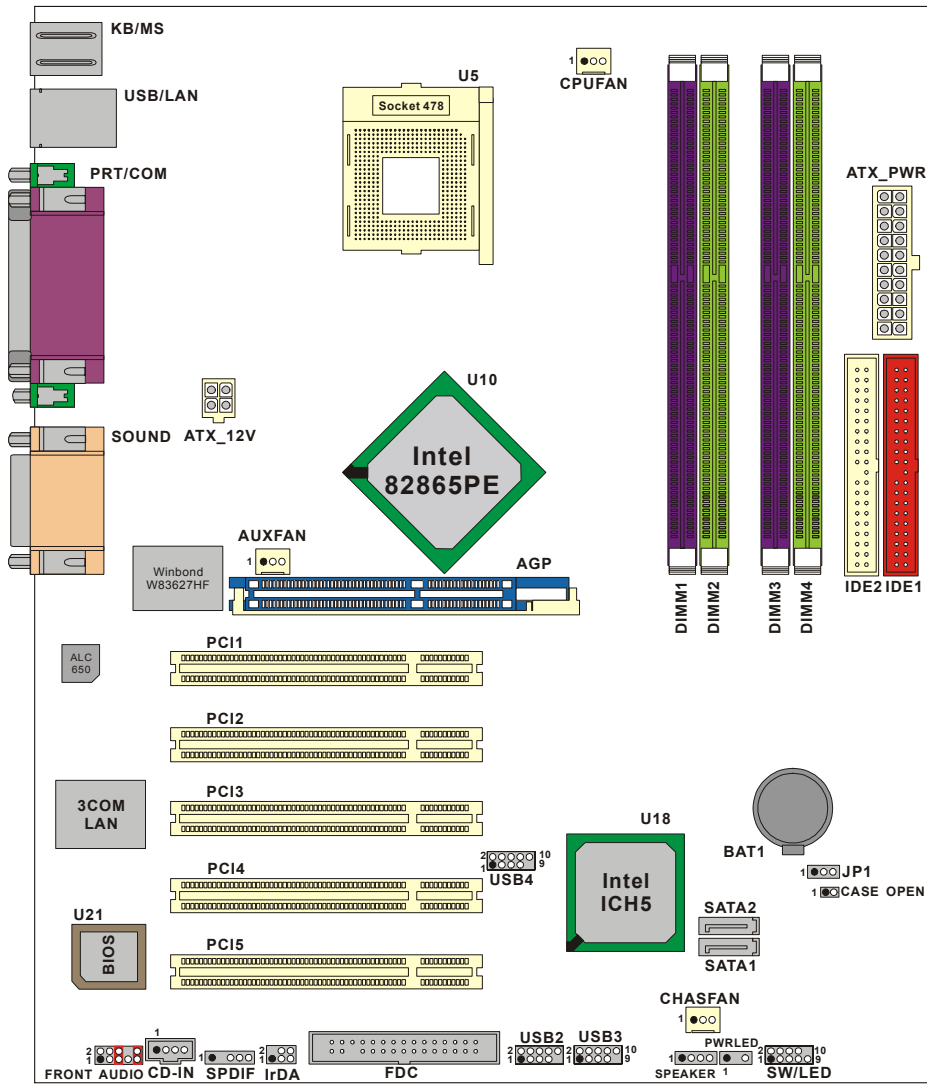
Watch Dog Timer:

- This mainboard contains a special feature called the “Watch Dog Timer” which is used to detect when the system is unable to handle over-clocking configurations during the POST stage. Once a problem is detected the system will reset the configurations and reboot the system after five seconds.

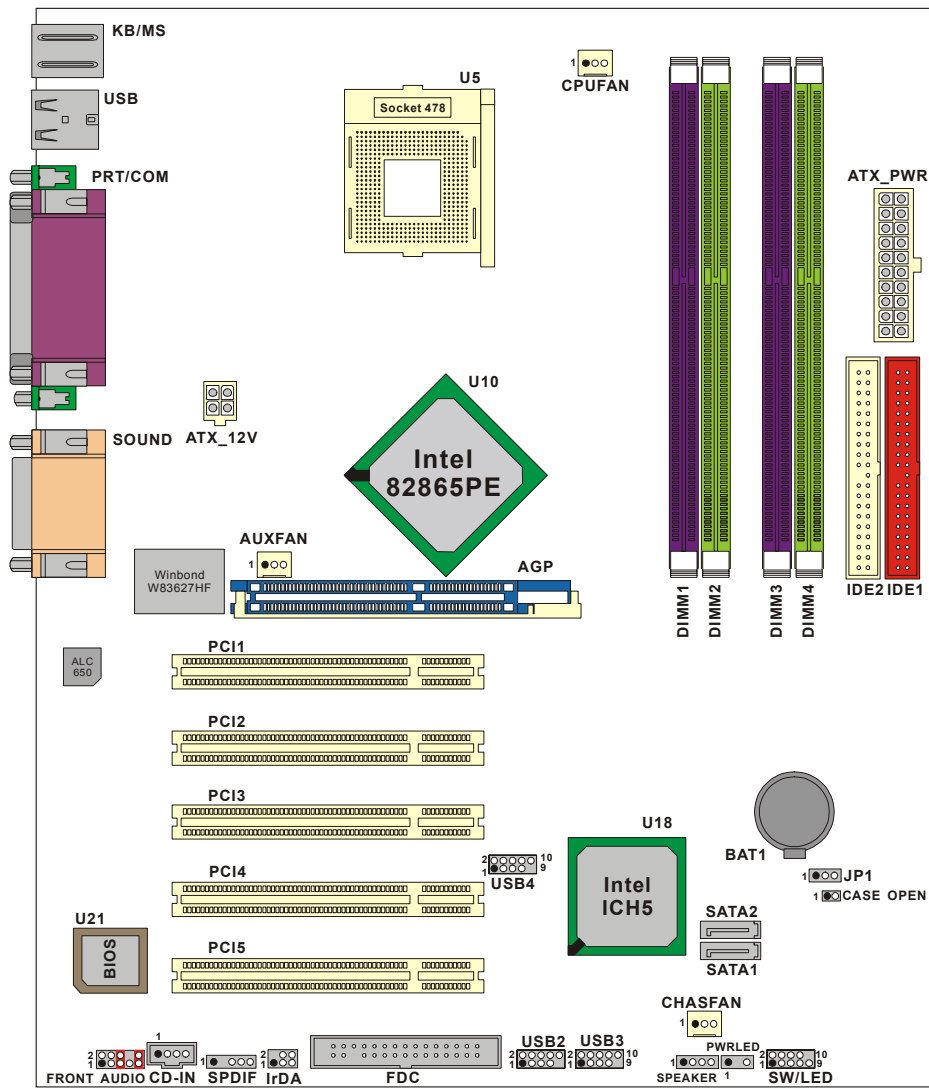
Quick Content Table

Function	Content Location	Page
CPU Socket 478	U5	11
DDR DIMM Slots	DDR DIMM 1、2、3、4	12
ATX Power Connector	ATX_12V、ATX_PWR	23
IDE Connectors	IDE1/2、SATA1/2	17
FDC Connector	FDC	17
AGP Slot	AGP	22
PCI Slots	PCI 1、2、3、4、5	22
CPU FAN、Chassis FAN、 Auxiliary FAN	CPUFAN、CHASFAN、AUXFAN	12
Front Panel Indicator	SW/LED、PWRLED	16
Speaker Connector	SPEAKER	18
Infrared Connector	IrDA	19
Front USB Headers	USB2、USB3、USB4	18
Clear CMOS Jumper	JP1	20
Case Open Warning Function	CASE OPEN	19
Sony/Philips Digital Interface Conn.	S/PDIF	21
CD-ROM Audio IN Header	CD-IN	21
Front Panel Audio Header	FRONT AUDIO	21
PC99 Color Codec Back Panel	Back Panel Connector	14

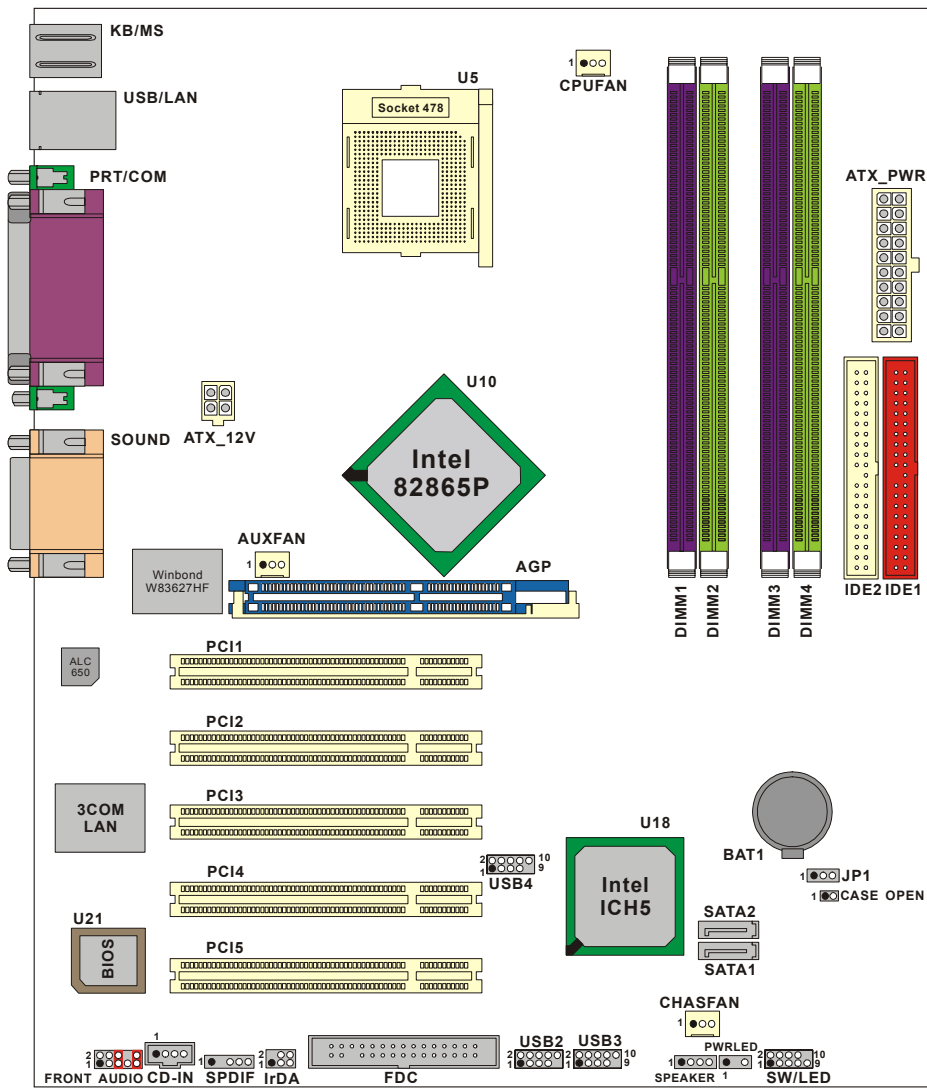
Configuration Layout of PX865PE PRO



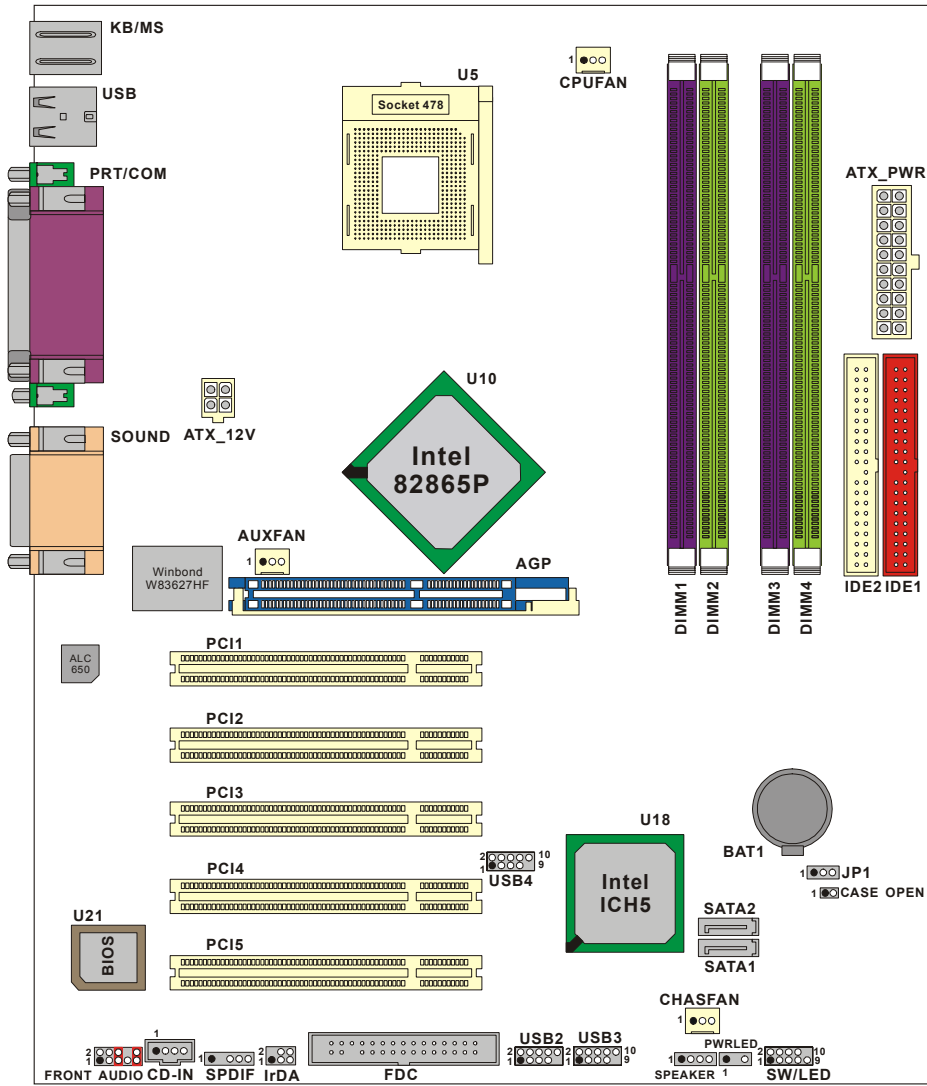
Layout of PX865PE



Layout of PX865P PRO



Layout of PX865P



Hardware Installation

This section will assist you in quickly installing your system hardware. Wear a wrist ground strap before handling components. Electrostatic discharge may damage your system components.

CPU Processor Installation

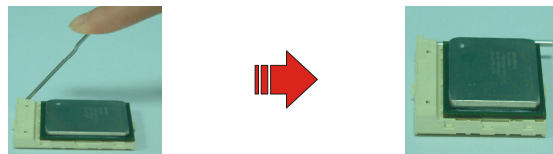
This mainboard supports Intel® Pentium® 4 processors using a Socket 478. Before building your system, we suggest you visit the Intel website and review the processor installation procedures. <http://www.intel.com>

CPU Socket 478 Configuration Steps:

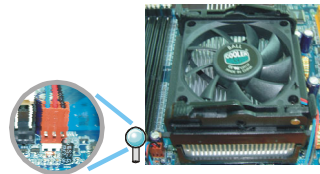
1. Locate the CPU socket on your mainboard and nudge the lever away from the socket. Then lift the lever to a 90-degree angle.
2. On the socket, locate the corner that has the pin-1 receptor. This corner will be near to the end of the lever. Match the dot on the CPU with the pin-1 receptor on the socket and lower the CPU onto the socket. The bottom of the CPU should be flush with the face of the socket.



3. Lower the lever until it snaps back into position. This will lock down the CPU.



4. Smear thermal grease on top of the CPU. Lower the CPU fan onto the CPU and use the clasps on the fan to attach it to the socket. Finally, extend the power cable from the fan and insert it onto the CPUFAN adapter.

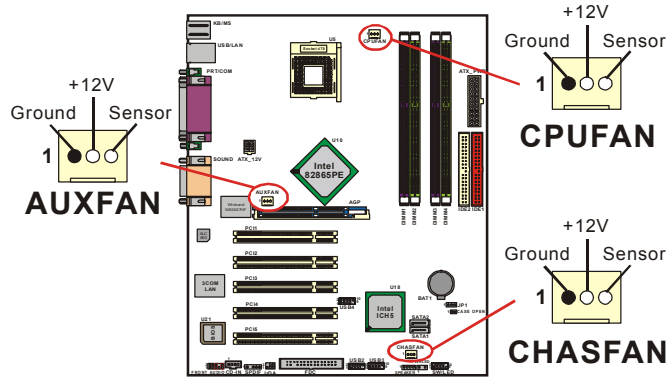


Attention: Before starting the system

Please check the installation completely before starting the system. Verify that the heatsink is properly installed and make sure the CPU fan is working. Overheating can damage the CPU and other sensitive components.

FAN Headers

Three power headers are available for cooling fans, which play an important role in maintaining the ambient temperature in your system.



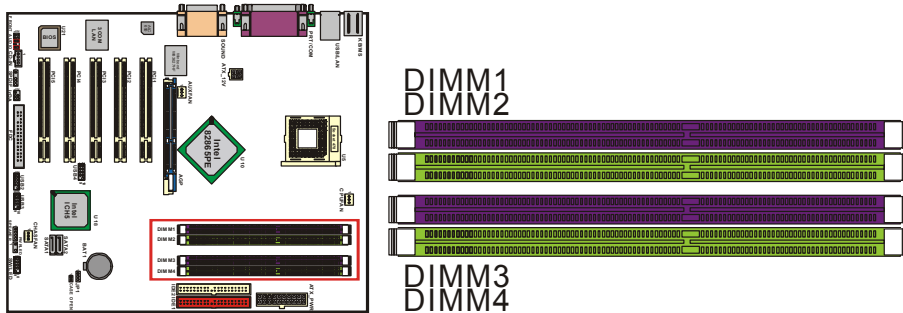
Attention

We strongly recommend that you use a CPU fan sink with your CPU. You can attach the CPU fan sink to the CPUFAN Header.

Memory Installation

The series contains 4 memory slots which use 184 pin DDR SDRAM with a total memory capacity of up to 4 GB. You can install unbuffered & non-ECC DDR DIMMs. It supports DDR266 when installed with CPUs that have clock speeds of 100 MHz. It supports DDR266/333 when installed with CPUs that have clock speeds of 133 MHz. And the PX865PE series supports also DDR266/320/400 when installed with CPUs that have CPU clock speeds of 200 MHz.

The series provides Dual-Channel functionality for its DIMM slots. DIMM1 and DIMM2 share one channel, while DIMM3 and DIMM4 share the other channel. Enabling dual channels can increase your data access rates.



PX865PE/ PX865P Series

To Enable Dual-Channel DDR, the following conditions must be met:

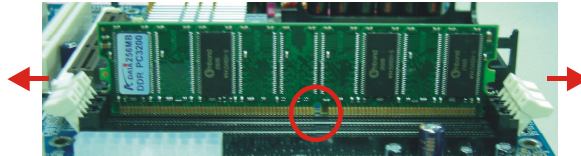
1. You must use either DIMM1 & DIMM3 together or DIMM2 & DIMM4 together or all four DIMM slots together.
2. You must use matching DIMM configurations between DIMM1 & DIMM3. You must use matching DIMM configurations between DIMM2 & DIMM4.
 - Same Density (128MB, 256MB, 512MB, etc.)
 - Same DRAM technology (128Mb, 256Mb, or 512Mb)
 - Same DRAM bus width (x8 or x16)
 - Both either single-sided or dual-sided
 - Same brand
 - Same timing specifications
 - Same DDR speed

A => Memory Module Type A, B => Memory Module Type B, X => None.

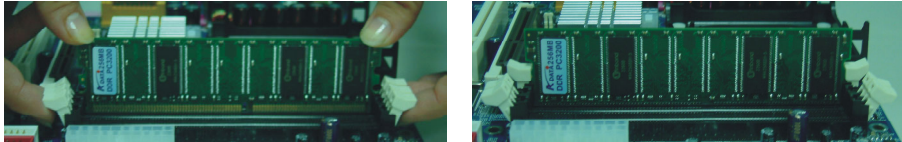
DIMM1	DIMM2	DIMM3	DIMM4
A	A	A	A
B	B	B	B
A	B	A	B
B	A	B	A
A	X	A	X
B	X	B	X
X	A	X	A
X	B	X	B

RAM Module Installation:

1. Pull the white plastic tabs on each side of the slot away from the slot.
2. Match the notch on the bottom of the RAM module with the corresponding pattern in the DIMM slot. This ensures that the module is inserted properly.



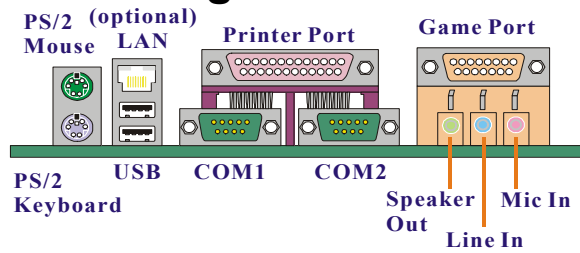
3. Lower the RAM module into the DIMM Slot and press firmly using both thumbs until the module snaps into place.



4. Repeat steps 1 & 2 for the remaining RAM modules.

* The pictures above are for reference only.

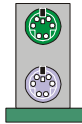
Back Panel Configuration



PS/2 Mouse & PS/2 Keyboard Connectors: KB/MS

The series mainboard provides a standard PS/2 mouse connector and PS/2 Keyboard connector. The pin assignments are described below:

PS/2 Mouse

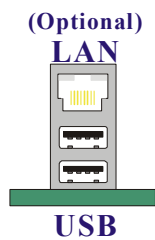


PS/2 Keyboard

Pin	Assignment	Pin	Assignment
1	Data	4	+5 V (fused)
2	No connect	5	Clock
3	Ground	6	No connect

USB & LAN Connectors: USB/ (LAN is optional)

There are two USB connectors on the back panel. These USB connectors are used to attach to USB devices such as: keyboards, mice and other USB devices. You can plug the USB devices directly into this connector. The PX865PE PRO/ PX865P PRO also provides a LAN port. You can plug LAN devices directly into this connector.

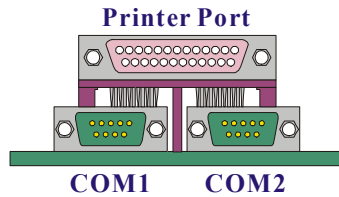


Pin	Assignment	Pin	Assignment
1	TDP	7	NC
2	TDN	8	NC
3	RDP	9	VCC3 SBY
4	NC	10	ACT LED
5	NC	11	VCC3 SBY
6	RDN	12	Speed LED

Pin	Assignment	Pin	Assignment
1/5	+5 V (fused)	3/7	USBP0+/P1+
2/6	USBP0-/P1-	4/8	Ground

Serial and Parallel Interface Ports

The series mainboard comes equipped with two serial ports and one parallel port on the back panel. These interface ports will be explained below.



Parallel Interface Port: PRT

The parallel port on your system has a 25-pin, DB25 connector and is used to interface with parallel printers and other devices using a parallel interface.

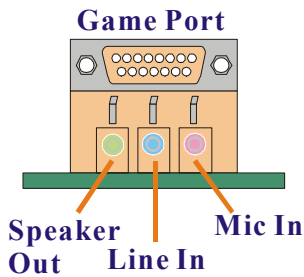
The Serial Interface: COM1/ COM2

The serial interface port is sometimes referred to as an RS-232 port or an asynchronous communication port. Mice, printers, modems and other peripheral devices can be connected to a serial port.

Game Port Connector: SOUND

This connector allows you to connect a joystick or game pad for playing computer games. This port can also be used to connect to MIDI devices.

Audio Port Connectors

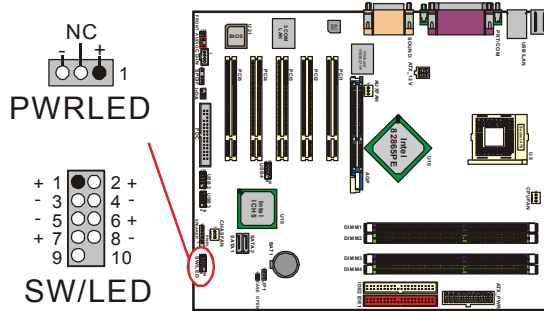


1. **Speaker Out** is used to connect to speakers or headphones. If the Super 5.1 driver is installed the Speaker Out becomes the Front Speaker.
2. **Line In** can be connected to an external CD player, Tape player or other audio devices for audio input. If the Super 5.1 driver is installed Line In becomes the Rear Speaker.
3. **Mic In** is used to connect to a microphone. If the Super 5.1 driver is installed the Mic In becomes the Subwoofer/ Center out.



This mainboard supports Super 5.1 Channel Audio effects which turns your standard Speaker Out, Lin In, Mic In audio connectors into a 6 channel audio system. See Appendix II for more information.

Front Panel Indicator: SW/LED、PWRLED



Pin	Assignment	Function	Pin	Assignment	Function
1	HD LED (+)	Hard Drive LED	2	Power LED (+)	POWER
3	HD LED (-)		4	Power LED (-)	LED
5	Reset Control (-)	Reset Button	6	Power Button(+)	Power-on Button
7	Reset Control(+)		8	Power Button(-)	
9	NC	NC	10	NC	NC

HD LED (Hard Drive LED Connector)

This connector can be attached to an LED on the front panel of a computer case. The LED will flicker during disk activity. This disk activity only applies to those IDE drives directly attached to the system board.

RST (Reset Button)

This connector can be attached to a momentary SPST switch. This switch is normally left open. When closed it will cause the mainboard to reset and run the POST (Power On Self Test).

PWR-LED (2-pin Power LED Connector)

The mainboard provides two power LED connector. If there is a 2-pin power LED cable on the front panel of a computer case. You can attach it to the 2-pin power LED connector. The LED will illuminate while the computer is powered on.

PWR ON (Power Button)

This connector can be attached to a front panel power switch. The switch must pull the Power Button pin to ground for at least 50 ms to signal the power supply to switch on or off (the time required is due to internal debounce circuitry on the system board). At least two seconds must pass before the power supply will recognize another on/off signal.

PWRLED (3-Pin Power LED Connector)

The mainboard provides two power LED connector. If there is a 3-pin power LED cable on the front panel of a computer case. You can attach it to the 3-pin power LED connector.

Connectors

Floppy Disk Connector: FDC

The series mainboard provides a standard floppy disk connector (FDC) that supports 360K, 720K, 1.2M, 1.44M and 2.88M floppy diskettes. This connector supports the floppy drive ribbon cables provided in the packaging.

Hard Disk Connectors: IDE1-2/ SATA1-2

The series mainboard has a 32-bit Enhanced PCI IDE Controller that supports PIO Mode 0~4, Bus Master, Ultra ATA 66/ 100. This mainboard has two IDE connectors, IDE1 (primary) and IDE2 (secondary). It also provides two serial ATA connectors.

IDE1 (Primary IDE Connector)

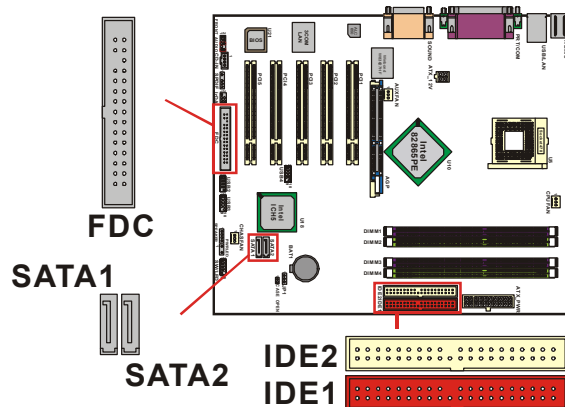
You can connect up to two hard drives to IDE1. If you attach two drives, you must use a ribbon cable with three connectors. You must also configure one drive as the master and one drive as the slave, using the jumpers located on each drive.

IDE2 (Secondary IDE Connector)

The IDE2 connector can also support a Master and a Slave drive. The configuration is similar to IDE1. The second drive on this controller must be set to slave mode.

SATA1/ SATA2

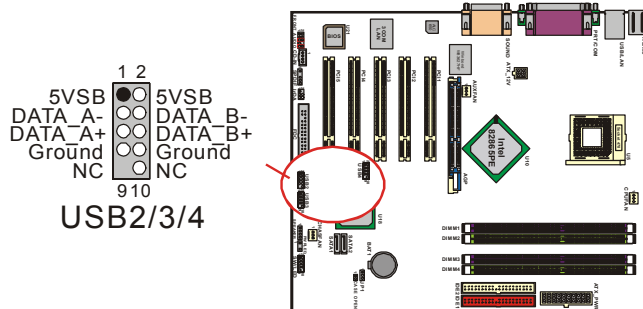
These SATA connectors support Serial ATA 150. These connectors only can connect to one serial ATA hard disk each.



Headers & Jumpers

Front USB Headers: USB2/ USB3/ USB4

You can connect the USB 4-Port Bracket to two of the USB2/ USB3 or USB4 header. There are four USB ports on the USB 4-Port Bracket which means you can connect four USB devices to one bracket. The mainboard supports up to eight USB devices including two on the back panel.



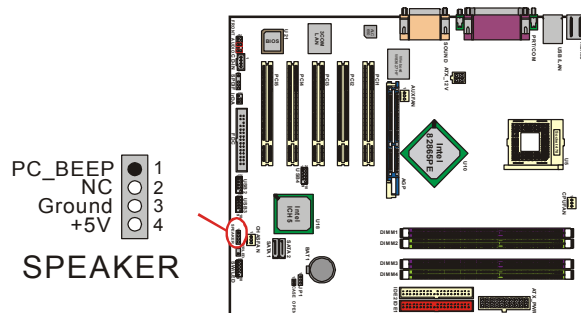
USB 4-Port Bracket (optional)

You can connect the USB 4-port bracket to two of the USB2, USB3 or USB4 header.

* If you are using USB 2.0 devices with Windows XP, and your Windows XP has never been updated with a Service Pack, you will need to install the USB 2.0 driver from the Microsoft® website.

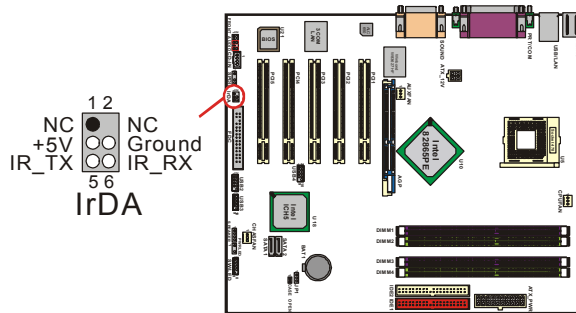
SPEAKER (Speaker Header)

A front panel speaker can be connected to this connector. When you boot your computer, the speaker sounds a short “beep” under normal circumstances. If there is a problem during the Power On Self-Test, the speaker will sound an “irregular beep”.



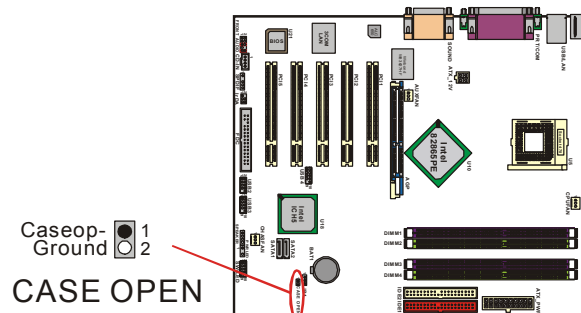
IrDA (Infrared Header)

This IrDA connector can be configured to support wireless infrared and is used to attach to an infrared sensing device. After the IrDA interface is configured, you can use this connector for connectionless data transfer to and from portable devices such as laptops and PDAs.



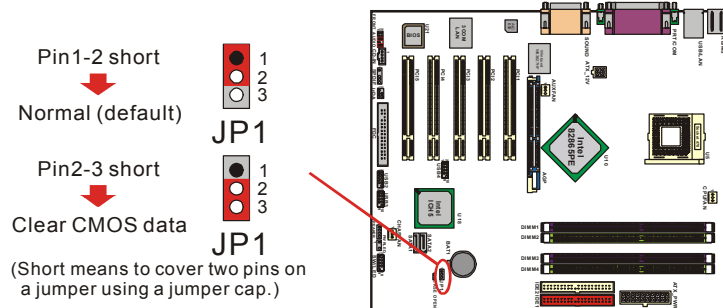
Case Open Warning Jumper: CASE OPEN

This connector is used to notify the user when the computer case has been previously opened. To configure this functionality, your computer case must be equipped with a “ case open” cable which you need to attach to the CASE OPEN jumper. Also, you must enable CASE OPEN warning functionality in the BIOS setup utility. When your computer case is opened, your system will display alert messages upon boot up. Note that your computer case must be equipped with a “case open” cable.



Clear CMOS Jumper: JP1

The “Clear CMOS” jumper is used when you cannot boot your system due to some CMOS configuration problem such as a forgotten password. This jumper allows you to reset the CMOS configurations, and then reconfigure.

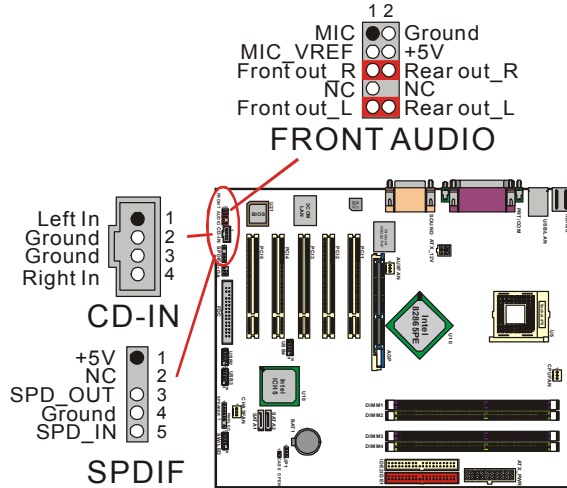


The following procedures are for resetting the BIOS password. It is important to follow these instructions closely.

1. Turn off your system and disconnect the AC power cable.
2. Set JP1 to OFF (2-3 Closed).
3. Wait several seconds.
4. Set JP1 to ON (1-2 closed).
5. Connect the AC power cable and turn on your system.
6. Reset your desired password.

Audio Connectors

This mainboard provides three connectors as part of its audio Subsystem.



CD-ROM Audio-In Header: CD-IN

This header is used to connect to a CD-ROM / DVD audio cable.

S/PDIF Header: SPDIF

S/PDIF (Sony/Philips Digital Interface) is an audio transfer file format, which provides high quality audio using optical fiber and digital signals. This mainboard is capable of delivering audio output and receiving audio input through the SPDIF header. One way you would use this header is by using an SPDIF bracket (optional) attached to your computer. This bracket will have a cable that you can attach to the SPDIF header. This bracket will also have an RCA connector, similar to that used with most consumer audio products. Using the RCA connector, the data can then be output to and input from an S/PDIF device. The devices that are receiving and sending information from this header must be S/PDIF compliant for optimal effect. Note that the SPDIF bracket is optional in the packaging that comes with this mainboard.

Front Panel Audio Header: FRONT AUDIO

If your computer case has been designed with embedded audio equipment. You can attach these components to the FRONT_AUDIO panel of the mainboard. First remove the jumper caps covering the FRONT_AUDIO pins. Use pins 1, 3 to connect to the case microphone. Use pins 9,5 to connect to the earphone. If you do not intend to use the FRONT_AUDIO panel, do not remove the jumper caps.

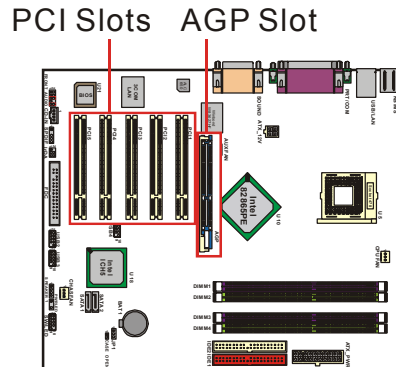


Attention

If the jumper caps are in place, jumper cap 1 is on pin 5, pin 6 and jumper cap2 is on pin 9, pin 10.

Slots

The slots in this mainboard are designed for expansion cards used to complement and enhance the functionality of the mainboard.



AGP Slot

This mainboard is equipped with an Accelerated Graphics Port (AGP) that supports 0.8V/1.5V AGP cards only. This mainboard also comes with AGP protection which ensures that you only install 0.8V/1.5V AGP cards.

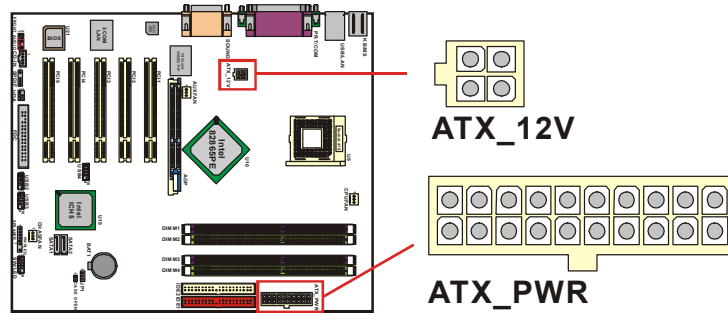
PCI Slots

This mainboard is equipped with 5 standard PCI slots. PCI stands for Peripheral Component Interconnect and is a bus standard for expansion cards. This PCI slot is designated as 32 bit.

Power Supply Attachments

ATX Power Connector: ATX_12V & ATX_PWR

This mainboard requires two ATX power connections; a 20-pin connector and a 4-pin connector. Your power supply must have both connectors. Attach the 4-pin connector first, then attach the 20-pin connector. Make sure the connectors are secure before applying power.



ATX_12V

PIN	Assignment	PIN	Assignment
1	Ground	3	+12V
2	Ground	4	+12V

ATX_PWR

PIN	Assignment	PIN	Assignment
1	+3.3V	11	+3.3V
2	+3.3V	12	-12V
3	Ground	13	Ground
4	+5V	14	PS_ON
5	Ground	15	Ground
6	+5V	16	Ground
7	Ground	17	Ground
8	PW_OK	18	-5V
9	5V_SB	19	+5V
10	+12V	20	+5V

Chapter 2. BIOS Setup

Introduction

This section describes PHOENIX-AWARD™ BIOS Setup program which resides in the BIOS firmware. The Setup program allows users to modify the basic system configuration. The configuration information is then saved to CMOS RAM where the data is sustained by battery after power-down.

The BIOS provides critical low-level support for standard devices such as disk drives, serial ports and parallel ports. As well, the BIOS controls the first stage of the boot process, loading and executing the operating system.

The PHOENIX-AWARD™ BIOS installed in your computer system's ROM is a custom version of an industry standard BIOS. This means that it supports the BIOS of Intel® based processors.

This version of the PHOENIX-AWARD™ BIOS includes additional features such as virus and password protection as well as special configurations for fine-tuning the system chipset. The defaults for the BIOS values contained in this document may vary slightly with the version installed in your system.

Plug and Play Support

This PHOENIX-AWARD™ BIOS supports the Plug and Play Version 1.0A specification as well as ESCD (Extended System Configuration Data) write.

EPA Green PC Support

This PHOENIX-AWARD™ BIOS supports Version 1.03 of the EPA Green PC specification.

APM Support

This PHOENIX-AWARD™ BIOS supports Version 1.1 & 1.2 of the Advanced Power Management (APM) specification. These features include system sleep and suspend modes in addition to hard disk and monitor sleep modes. Power management features are implemented using the System Management Interrupt (SMI).

PCI Bus Support

This PHOENIX-AWARD™ BIOS also supports Version 2.3 of the Intel PCI (Peripheral Component Interconnect) local bus specification.

DRAM Support

DDR (Double Data Rate) SDRAM (Synchronous DRAM) is supported.

Supported CPUs

This PHOENIX-AWARD™ BIOS supports the Intel® Pentium® 4 CPUs.

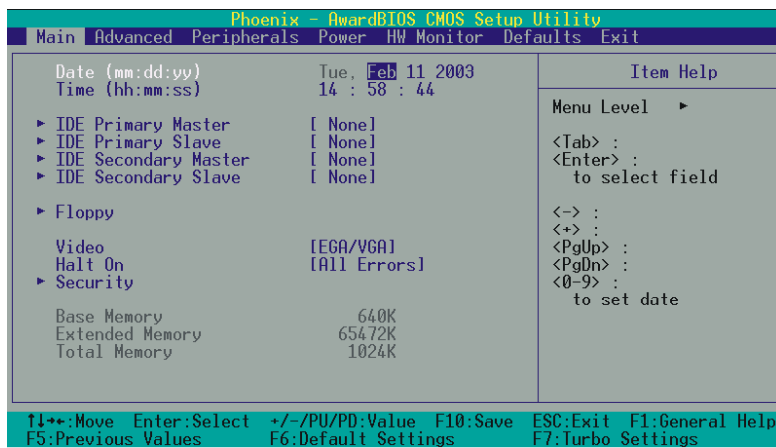
Key Function

In general, you can use the arrow keys to highlight items, press <Enter> to select, use the <PgUp> and <PgDn> keys to change entries, press <F1> for help and press <Esc> to quit. The following table provides more detail about how to navigate within the BIOS Setup program.

Keystroke	Function
Up arrow	Move to previous item
Down arrow	Move to next item
Left arrow	Move to the item on the left (menu bar)
Right arrow	Move to the item on the right (menu bar)
Esc	Main Menu: Quit without saving changes Submenus: Exit Current page to the next higher level menu
Move Enter	Move to the item you desire
PgUp key	Increase the numeric value or enter changes
PgDn key	Decrease the numeric value or enter changes
+ Key	Increase the numeric value or enter changes
- Key	Decrease the numeric value or enter changes
Esc key	Main Menu – Quit and do not save changes into CMOS Status Page Setup Menu and Option Page Setup Menu – Exit Current page and return to Main Menu
F1 key	General help on Setup navigation keys
F5 key	Load previous values from CMOS
F6 key	Load the defaults from BIOS default table
F7 key	Load the turbo defaults
F10 key	Save all the CMOS changes and exit

Main Menu

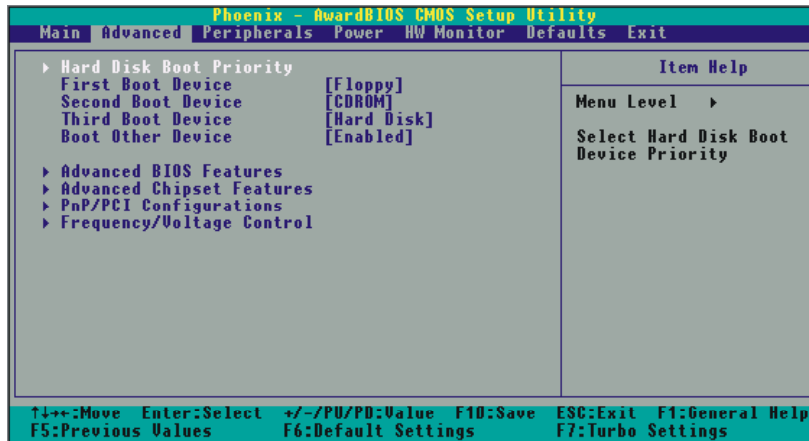
When you enter the PHOENIX-AWARD™ BIOS Utility, the Main Menu will appear on the screen. The Main menu allows you to select from several configuration options. Use the left/right arrow keys to select a particular configuration screen from the top menu bar or use the down arrow key to access and configure the information below.



Main Menu Setup Configuration Options

Item	Options	Description
Date	mm dd yyyy	Set the system date. Note that the 'Day' automatically changes when you set the date.
Time	Hh: mm: ss	Set the current time of the system.
IDE Primary Master	Options contained in sub menu.	Press <Enter> to enter the sub menu.
IDE Primary Slave	Options contained in sub menu.	Press <Enter> to enter the sub menu.
IDE Secondary Master	Options contained in sub menu.	Press <Enter> to enter the sub menu.
IDE Secondary Slave	Options contained in sub menu.	Press <Enter> to enter the sub menu.
Floppy	Options contained in sub menu	Press <Enter> to enter the sub menu. Select the type of floppy disk drive installed in your system.
Video	EGA/VGA CGA 40 CGA 80 MONO	Select the default video device.
Halt On	All Errors No Errors All, but Keyboard All, but Diskette All, but Disk/ Key	Select the situation in which you want the BIOS to stop the POST process and notify you.
Security	Options contained in sub menu.	Press <Enter> to enter the sub menu.
Base Memory	N/A	Displays the amount of conventional memory detected during boot up.
Extended Memory	N/A	Displays the amount of extended memory detected during boot up.
Total Memory	N/A	Displays the total memory available in the system.

Advanced BIOS Features



Hard Disk Boot Priority

Select hard disk boot priority.

First /Second/Third/ Boot Device

Select the order in which devices will be searched in order to find a boot device.

Options: Floppy · LS120 · CDROM · ZIP100 · USB-FDD · USB-ZIP · USB-CDROM · USB-HDD · LAN · Disabled

Boot Other Device

The setting allows the system to try to boot from other devices if the system fails to boot from the 1st/ 2nd/ 3rd boot devices. Options: Enabled (default) · Disabled

Advanced BIOS Features

Virus Warning

This item allows you to choose the VIRUS warning feature for IDE Hard Disk boot sector protection. If this function is enabled and someone attempts to write data into this area, BIOS will display a warning message on the screen and sound an audio alarm (beep).

Options: Disabled (default), Enabled

CPU L1 & L2 Cache

Make CPU internal cache active or inactive. System performance may degrade if you disable this item. Options: Enabled (default) \ Disabled.

Hyper-Threading Technology

When you install a CPU include Hyper-Threading Technolong. And this item will allow you to enable or disabled the Hyper-Threading technology. Options: Disabled (default) \ Enabled

Quick Power On Self Test

Allows the system to skip certain tests while booting. This will speed up the boot process. Options: Enabled (default) \ Disabled.

Boot Up NumLock Status

Selects the power on state for NumLock.

Options: On (default) Numpad keys are number keys.
 Off Numpad keys are arrow keys.

Typematic Rate Setting

When “Enabled”, the “typematic rate” and “typematic delay” can be configured. Typematic Rate determines the keystroke repeat rate used by the keyboard controller..

Options: Disabled (default) \ Enabled

Typematic Rate (Chars/Sec)

The rate at which a character repeats when you hold down a key.

Options: 6 (default) \ 8 \ 10 \ 12 \ 15 \ 20 \ 24 \ 30

Typematic Delay (Msec)

The delay before keystrokes begin to repeat. Options: 250 (default) \ 500 \ 750 \ 1000

APIC Mode

By enabling this option, “MPS version control for OS” can be configured.

Options: Disabled \ Enabled (default)

MPS Version Control For OS

The 1.1 version is the older version that supports 8 more IRQs in the Windows NT environment. Choose the new 1.4 version for Windows 2000 and Windows XP. Options: 1.4 (default) \ 1.1

OS Select For DRAM > 64MB

Select “OS2” only if you are running the OS/2 operating system with greater than 64MB of RAM.
Options: Non-OS2 (default) ∙ OS2

HDD S.M.A.R.T. Capability

Self Monitoring Analysis and Reporting Technology is a technology that enables a PC to attempt to predict the possible failure of storage drives. Options: Disabled (default) ∙ Enabled

Small LOGO (EPA) Show

This item allows you to show or hide the small LOGO EPA.
Options: Disabled (default) ∙ Enabled

Advanced Chipset Features

DRAM Timing Selectable

This item determines DRAM clock/ timing using SPD or manual configuration.
Make sure your memory module has SPD (Serial Presence Data), if you want to select the “By SPD” option. Options: Manual ∙ By SPD (default)

CAS Latency Time

This item determines CAS Latency. When synchronous DRAM is installed, the number of clock cycles of CAS latency depends on the DRAM timing. Do not reset this field from the default value specified by the system engineer. This field is adjustable only when “DRAM Timing Selectable” is set to “Manual”. This field is locked when “DRAM Timing Selectable” is set to “By SPD” and is automatically determined by the system. Options: 2 ∙ 2.5 ∙ 3

Active to Precharge Delay

This item allows you to select DRAM Active to Precharge Delay. This field is locked when “DRAM Timing Selectable” is set to “By SPD” and is automatically determined by the system.
Options: 8 ∙ 7 ∙ 6 ∙ 5

DRAM RAS# to CAS# Delay

This item allows you to select a delay time between the CAS and RAS strobe signals. It only applies when DRAM is written to, read from, or refreshed. This field is adjustable only when “DRAM Timing Selectable” is set to “manual”. This field is locked when “DRAM Timing Selectable” is set to “By SPD” and is automatically determined by the system. Options: 4 ∙ 3 ∙ 2

DRAM RAS# Precharge

This item allows you to select the DRAM RAS# precharge time. The ROW address strobe must precharge again before DRAM is refreshed. An inadequate configuration may result in incomplete data. This field is adjustable only when “DRAM Timing Selectable” is set to “manual”. This field is locked when “DRAM Timing Selectable” is set to “By SPD” and is automatically determined by the system. Options: 4 ∙ 3 ∙ 2

System BIOS Cacheable

When enabled, accesses to system BIOS ROM addressed at F0000H-FFFFFH are cached, provided that the cache controller is enabled. Options: Enabled (default), Disabled

Video BIOS Cacheable

Select “Enabled” to allow caching of the video BIOS which may improve performance. If any other program writes to this memory area, a system error may result. Options: Enabled, Disabled (default)

Memory Hole at 15M-16M

When enabled, you can reserve an area of system memory for ISA adapter ROM. When this area is reserved, it cannot be cached. Refer to the user documentation of the peripheral you are installing for more information. Options: Disabled (default) ∙ Enabled

Delay Prior to Thermal

Select the delay time before thermal activation from high temperatures.

Options: 4 Min ∙ 8 Min ∙ 16 Min (default) ∙ 32 Min

AGP Aperture Size (MB)

Select the size of the AGP (Accelerated Graphic Port) aperture. The aperture is a portion of the PCI memory address range dedicated for graphic memory address space. Host cycles that hit the aperture range are forwarded to the AGP without any translation.

Options: 4 ∙ 8 ∙ 16 ∙ 32 ∙ 64 (default) ∙ 128 ∙ 256

PnP/PCI Configurations

Reset Configuration Data

Select “Enabled” to reset the Extended System Configuration Data (ESCD) if you have installed a new add-on card and the system reconfiguration has caused such a serious conflict that the OS cannot boot. Options: Disabled (default) ∙ Enabled

Resources Controlled By

BIOS can automatically configure all the boot and Plug and Play compatible devices. If you choose Auto, you will not be able to manually assign IRQ DMA and memory base address fields, since BIOS automatically assigns them. Options: Auto (ESCD) (default) \ Manual

IRQ Resources

When resources are controlled manually, you can assign each system interrupt a type, depending on the type of device using the interrupt. This is only configurable when “Resources Controlled By” is set to “Manual”.

Options: IRQ-3/ 4/ 5/ 7/ 9/ 10/ 11/ 12/ 14/ 15 assigned to PCI device

PCI / VGA Palette Snoop

Some graphic controllers that are not VGA compatible take the output from a VGA controller and map it to their display as a way to provide boot information and VGA compatibility.

Options: Disabled (default) \ Enabled

PCI Latency Timer (CLK)

This item allows you to set up the PCI Latency Time (0-255). If you select the “32” it will optimize PCI speeds. Options: 0-255 \ 32 (default)

PCI SLOT1- 5

This item allows you to select an IRQ address for PCI slot 1-5.

Options: Auto (default) \ 3 \ 4 \ 5 \ 7 \ 9 \ 10 \ 11 \ 12 \ 14 \ 15

Frequency/Voltage Control CPU Host Frequency (MHz)

This item displays the CPU Host frequency . You can set it from XXX to 255. The default depends on your CPU frequency. The default for this field depends on the CPU installed.

CPU Clock Ratio

This field will only display if the CPU has not been set to a locked state by the CPU manufactory. If your CPU is locked, you will not be able to adjust the “CPU Clock Ratio”. Options: 8X - 50X

DDR:CPU Ratio

This item allows you to adjust your “DRAM:CPU Clock Ratio” and overclock the DDR speeds of the system. The options that are available for this item will depend on the factory default setting for the “CPU Host Frequency” BIOS field according to the table below.

Factory Default CPU Host Frequency	Available Options
100	2.66X
133	Default (default), 2.00X, 2.50X, 【2.66X (Turbo) only for PX865PE series】
200	Default (default), 1.33X, 1.60X, 2.00X, 2.50X (Turbo), 2.66X (Turbo) 【only for PX865PE series】

Spread Spectrum

The Spread Spectrum function can reduce the EMI (Electromagnetic Interference) generated. Options: Enabled (default) 、 Disabled

AGP/PCI/SRC Speed Setting

This item determines the AGP, PCI and SRC frequencies (speed settings). You can set these frequencies using the supplied BIOS options. One of the options available to you is “Auto, Auto, Auto”. Using the “Auto, Auto, Auto” option will instruct the system to automatically calculate these frequencies based on the factory default “CPU Host Frequency” setting, the current “CPU Host Frequency” setting and the formulas in the table below. Note that the factory default “CPU Host Frequency” is the value of the “CPU Host Frequency” when you first received your system.

Factory Default “CPU Host Frequency”	Formulas
100	AGP frequency = <i>current</i> CPU Host Frequency / 1.5 PCI frequency = <i>current</i> CPU Host Frequency / 3 SRC frequency = <i>current</i> CPU Host Frequency / 1
133	AGP frequency = <i>current</i> CPU Host Frequency / 2 PCI frequency = <i>current</i> CPU Host Frequency / 4 SRC frequency = <i>current</i> CPU Host Frequency / 1.33
200	AGP frequency = <i>current</i> CPU Host Frequency / 3 PCI frequency = <i>current</i> CPU Host Frequency / 6 SRC frequency = <i>current</i> CPU Host Frequency / 2

To determine your new frequencies, you must first take the factory default “CPU Host Frequency” and then determine the corresponding formulas according to the table above. Second, take the current “CPU Host Frequency” setting and apply it to the formulas to arrive at your new frequencies.

PX865PE/ PX865P Series

For example, if your factory default “CPU Host Frequency” was 100, and you reset the “CPU Host Frequency” to 133, your AGP, PCI and SRC frequencies will be as follows:

AGP Frequency = $133 / 1.5 = 88.67$

PCI Frequency = $133 / 3 = 44.33$

SRC Frequency = $133 / 1 = 133.0$

Default CPU Voltage (Volt)

This item displays the CPU default Voltage.

CPU Voltage (Volt)

This item allows you to adjust your CPU core voltage. Options range from 0.8375V~1.6V

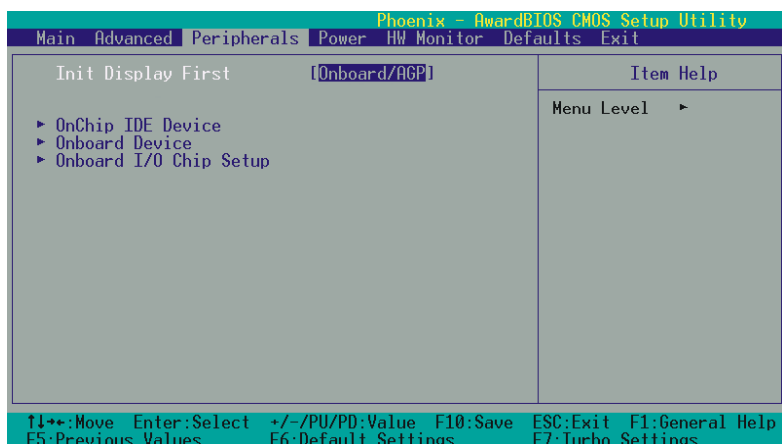
AGP Voltage (Volt)

This item allows you to adjust the AGP Voltage. Options: 1.5 (default) 、 1.6 、 1.7 、 1.8

DDR Voltage (Volt)

This item allows you to adjust the RAM voltage. Options: 2.55 (default) 、 2.65 、 2.75 、 2.85

Integrated Peripherals



Init Display First

With systems that have multiple video cards, this option determines whether the primary display uses a PCI slot or an AGP slot. Options: AGP (default) \ PCI Slot

OnChip IDE Device IDE HDD Block Mode

Block mode is otherwise known as block transfer, multiple commands, or multiple sector read/write. Select the "Enabled" option if your IDE hard drive supports block mode (most new drives do). The system will automatically determine the optimal number of blocks to read and write per sector. Options: Enabled (default) \ Disabled

On-Chip Primary/Secondary PCI IDE

The mainboard chipset contains a PCI IDE interface with support for two IDE channels. Select "Enabled" to activate the first and/or second IDE interface. Select "Disabled" to deactivate the interface if you are going to install a primary and/or secondary add-in IDE interface. Options: Enabled (default) \ Disabled

IDE Primary/Secondary/Master/Slave PIO

The IDE PIO (Programmed Input / Output) fields let you set a PIO mode (0-4) for each of the IDE devices that the onboard IDE interface supports. Modes 0 to 4 will increase performance incrementally. In Auto mode, the system automatically determines the best mode for each device. Options: Auto (default) \ Mode0 \ Mode1 \ Mode2 \ Mode3 \ Mode4.

IDE Primary / Secondary /Master / Slave UDMA

Ultra DMA 100 functionality can be implemented if it is supported by the IDE hard drives in your system. As well, your operating environment requires a DMA driver (Windows 95 OSR2 or a third party IDE bus master driver). If your hard drive and your system software both support Ultra DMA 100, select “Auto” to enable BIOS support. Options: Auto (default) · Disabled

*****OnChip Serial ATA Setting*****

On-Chip Serial ATA

This item allows you to enable or disabled the on-chip serial ATA function.

Options: Disabled (default) · Auto · Manual

Serial ATA Port0/ 1 Mode

This item allows you to select the Serial ATA device mode for port 0 & 1.

Options: Primary Master (default for Port1) · Primary Slave (default for Port2) · Secondary Master · Secondary Slave

Onboard Device

If you highlight the “INTEL OnChip PCI Device” label and then press the enter key, it will take you to a submenu with the following options:

USB Controller

This option should be enabled if your system has a USB port installed on the system board. You will need to disable this feature if you add a higher performance controller.

Options: Enabled (default) · Disabled

USB 2.0 Controller

This option should be enabled if your system has a USB 2.0 device installed on the system board. You will need to disable this feature if you install a USB 1.1 device.

Options: Enabled (default) · Disabled

USB Keyboard Support

Enables support for USB attached keyboards. Options: Disabled (default) · Enabled

AC97 Audio

This item allows you to control the onboard AC'97 audio. Options: Enabled (default) · Disabled

Onboard LAN Device

This item allows you to enable or disable the LAN Device. Options: Enabled (default) ∙ Disabled

Onboard I/O Chip Setup PWRON After PWR-Fail

This field will determine whether your system will boot after restoring power after a power failure. If you select “On”, the system will boot whether or not the system was on before power failure. If you select “Former-Sts”, the system will be restored to the status before the power failure.

Options: Off (default) ∙ On ∙ Former-Sts

Power On Function

This option allows you to select a way to power on your computer. Options: Password ∙ Hot KEY ∙ Mouse Left ∙ Mouse Right ∙ Any KEY ∙ BUTTON ONLY (default), and Keyboard 98

KB Power On Password

This is the password that your system will use as part of the power-on sequence. This field is only configurable when “Power On Function” is set to “Password”.

Hot Key Power ON

This option allows you to use the Ctrl key along with a hot key (function key) to power on your system. This field is only configurable when “Power On Function” is set to “Hot Key”.

Options: Ctrl-F1 ∙ Ctrl-F2..... Ctrl-F12

Onboard FDC Controller

Select “Enabled” if your system has a floppy disk controller (FDC) installed on the system board and you wish to use it. If you install an add-in FDC or the system has no floppy drive, select “Disabled”.

Options: Enabled (default) ∙ Disabled

Onboard Serial Port 1/ Port 2

Select an address and corresponding interrupt for the first/ second serial port.

Options: Disabled ∙ 3F8/IRQ4 (default for port1) ∙ 2F8/IRQ3(default for port2) ∙ 3E8/IRQ4 ∙ 2E8/IRQ3 ∙ Auto

UART Mode Select

This item allows you to select the Infra Red (IR) standard to be used.

Options: Normal (default) ∙ ASKIR ∙ IrDA

RxD, TxD Active

This item determines the RxD and TxD frequencies. This field only configurable if “UART Mode Select” is set to “ASKIR” or “IrDA”. Options: Hi / Lo (default) ∙ Hi / Hi ∙ Lo / Hi ∙ Lo / Lo

IR Transmission Delay

This item allows you to enable/disable IR transmission delay. This field only configurable if “UART Mode Select” is set to “ASKIR” or “IrDA”. Options: Enabled (default) ∙ Disabled

UR2 Duplex Mode

Select the transmission mode used by the IR interface. Full-duplex mode permits simultaneous bi-directional transmission. Half-duplex mode permits transmission in only one direction at a time. This field only configurable if “UART Mode Select” is set to “ASKIR” or “IrDA”.

Options: Half (default) ∙ Full

Use IR Pins

Consult your IR peripheral documentation to select the correct setting of the TxD and RxD signals. This field is only configurable if “UART Mode Select” is set to “ASKIR” or “IrDA”.

Options: Full ∙ Half (default)

Onboard Parallel Port

Select an address and corresponding interrupt for the onboard parallel port.

Options: 378/IRQ7 (default) ∙ 278/IRQ5 ∙ 3BC/IRQ7 ∙ Disabled

Parallel Port Mode

This option allows you to select a parallel port mode for the onboard parallel port.

Options: ECP(default) Extended Capabilities Port.

 EPP Enhanced Parallel Port.

 SPP Standard Printer Port.

 ECP+EPP ECP & EPP mode.

 Normal

EPP Mode Select

Select EPP port type 1.7 or 1.9. This field is only configurable if “Parallel Port Mode” is set to “EPP” or “ECP+EPP”. Options: EPP 1.9(default) ∙ EPP 1.7

PX865PE/ PX865P Series

ECP Mode Use DMA

Select a DMA Channel for the parallel port when using the ECP mode. This field is only configurable if “Parallel Port Mode” is set to “ECP”. Options: 3 (default) ∙ 1

Game Port Address

Game Port I/O Address. Options: 201 (default) ∙ 209 ∙ Disabled

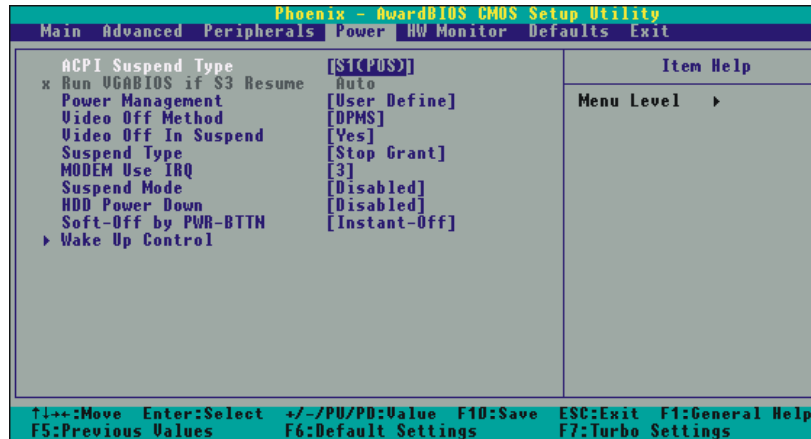
Midi Port Address

Midi Port Base I/O Address. Options: 330 ∙ 300 (default) ∙ 290 ∙ Disabled

Midi Port IRQ

This determines the IRQ that the Midi Port will use. Options: 5 ∙ 10 (default)

Power Management



The Power Management Setup Menu allows you to configure your system to utilize energy conservation features as well as power-up/ power-down options.

ACPI Suspend Type

The item allows you to select the suspend type using the ACPI operating system.

Options: S1 (POS) (default) Power on Suspend
 S3 (STR) Suspend to RAM
 S1 & S3 POS and STR

Run VGABIOS if S3 Resume

Select whether you want to run VGABIOS when the system wakes up from the S3 suspend function. This field is not configurable if “ACPI Suspend Type” is set to “S1(POS)”.

Options: Auto (default) · Yes · No

Power Management

There are three options of Power Management:

1. Min. Saving
 - Minimum power management
 - Suspend Mode = 1hour
 - HDD Power Down = 15 minutes

PX865PE/ PX865P Series

2. Max. Saving

Maximum power management (only available for sl CPUs).

Suspend Mode = 1 minute

HDD Power Down = 1 minute

3. User Defined (default)

Allows you to set each mode individually.

When this option is enabled, each of the ranges are from 1 minute to 1 hour except for HDD Power Down, which ranges from 1 minute to 15 minute and includes a “disable” option.

Note: If you select Min. or Max. Power Saving modes, the “HDD Power Down” value and the “Suspend Mode” value are both fixed.

Video Off Method

This option determines the manner in which the monitor goes blank.

Options:

V/H SYNC+Blank This selection will cause the system to turn off the vertical and horizontal synchronization ports and write blanks to the video buffer.

Blank Screen(default) This option only writes blanks to the video buffer.

DPMS Support Initial display power management signaling.

Video Off In Suspend

This determines whether power to the monitor is switched off when the computer is in suspend mode.

Options: Yes · No (default)

Suspend Type

This item allows you to select the suspend type under the ACPI operating system.

Options: Stop Grant (default) · PwrOn Suspend

Modem Use IRQ

This determines the modem's IRQ. Options: 3 (default) · 4 · 5 · 7 · 9 · 10 · 11 · NA.

Suspend Mode

This item allows you to select the suspend time under the ACPI operating system.

Options: Disabled(default) · 1Min · 2Min · 4Min · 8Min · 12Min · 20Min · 30Min · 40Min · 1Hour

HDD Power Down

When enabled, the hard disk drive will power down after a certain configurable period of system inactivity. All other devices remain active.

Options: Disabled (default) \ 1 Min \ 2 Min \ 3 Min \ 4 Min \ 5 Min \ 6 Min \ 7 Min \ 8 Min \ 9 Min \ 10 Min \ 11 Min \ 12 Min \ 13 Min \ 14 Min \ 15Min

Soft-Off by PWRBTN

In situations where the system enters a “hung” state, you can configure the BIOS so that you are required to pre the power button for more than 4 seconds before the system enters the Soft-Off state.

Options: Delay 4 Sec, Instant-Off (default).

Wake Up Control

If you highlight the “Wake Up Control” label and then press the enter key, it will display a submenu with the following options:

PCI PME Wake Up

This option will also cause the system to wake up with any onboard LAN activity.

Options: Disabled (default) \ Enabled

Ring Wake Up

This option allows you to awaken the system upon receiving an incoming call to modem device.

Options: Disabled (default) \ Enabled.

USB KB Wake-up From S3

This item allows you to awaken the system from suspend mode using a USB keyboard.

Options: Enabled \ Disabled (default)

* This option is configurable only when the ACPI Suspend Type is set to S3.

RTC Wake Up

When “Enabled”, you can set the date and time at which the RTC (real-time clock) alarm awakens the system from Suspend mode. Options: Enabled \ Disabled (default).

Date of Month Alarm

You can choose which date of the month the system will boot up. This field is only configurable when “RTC Wake Up” is set to “Enabled”.

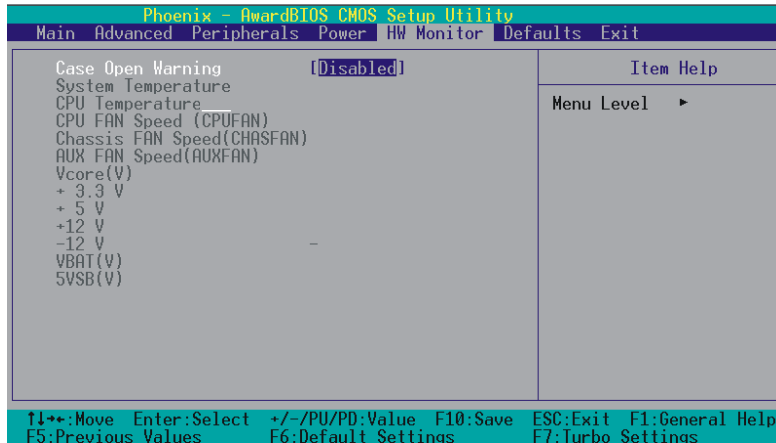
Time (hh: mm: ss) Alarm

You can choose the hour, minute and second the system will boot up. This field is only configurable when “RTC Wake Up” is set to “Enabled”.

Reload Global Timer Events

When a system goes into suspend mode, certain devices must be inactive for a period of time. Conversely, if any of those devices have any activity, the system will awaken. You can select the devices that will participate in suspend/power-on activity by configuring these fields. Devices include: Primary IDE 0/ Primary IDE 1/ Secondary IDE 0/ Secondary IDE 1/ FDD,COM,LPT Port/ PCI PIRQ [A-D]#. Options: Disabled (default), Enabled

Hardware Monitor

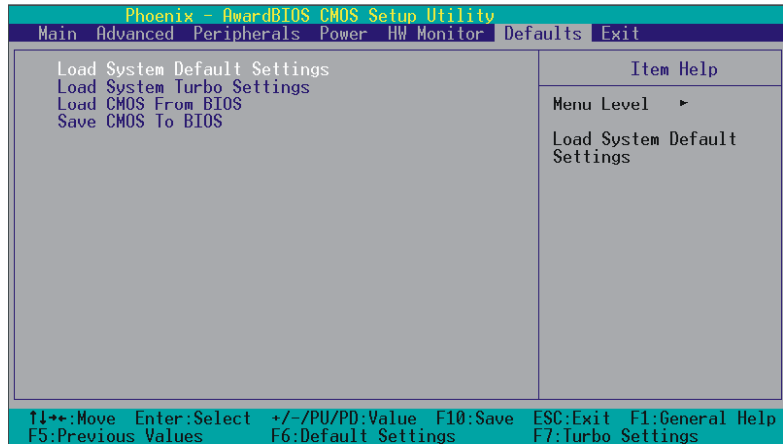


Case Open Warning

If this function is set to “Enabled” and the case had been previously opened, the system will automatically display alert messages on the screen when you power on your computer. If this function is set to “Disabled”, the system will not show alert messages when you power on your computer even if the case had been previously opened.

Options: Disabled (default) \ Enabled

Load Defaults



Load System Default Settings

Load System Default Settings.

Load System Turbo Settings

Load System Turbo Settings.

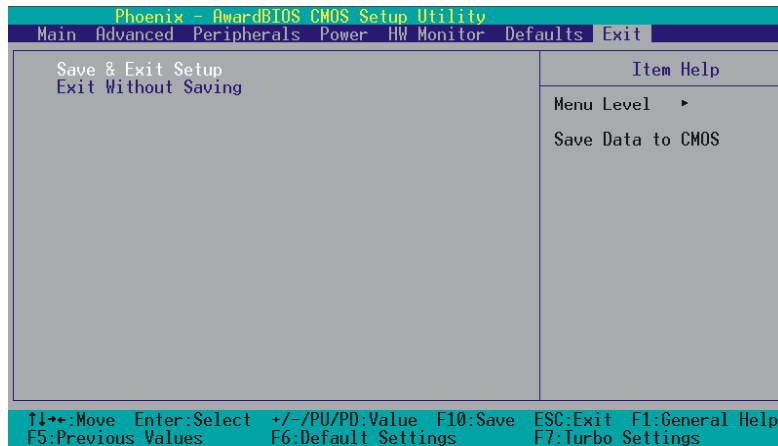
Load CMOS From BIOS

Load defaults from flash ROM for systems without batteries.

Save CMOS To BIOS

Save defaults to flash ROM for systems without batteries.

Exit Menu



Save & Exit Setup

Save all configuration changes to CMOS (memory) and exit setup. A confirmation message will be displayed before proceeding.

Exit Without Saving

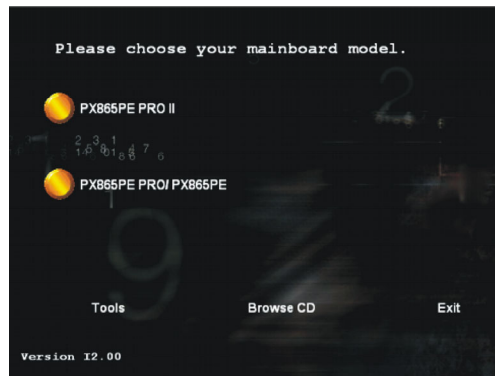
Abandon all changes made during the current session and exit setup. A confirmation message will be displayed before proceeding.

Chapter 3: Software Setup

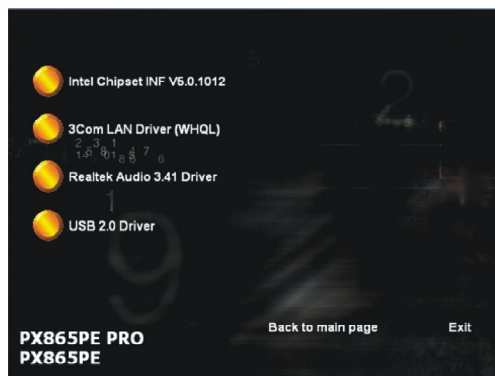
Software Installation

Place the Driver CD into the CD-ROM drive and the Installation Utility will auto-run. You can also launch the Driver CD Installation Utility manually by executing the Intel.exe program located on the Driver CD. The pictures below are for reference only and the Driver CD may vary slightly from your package.

1. The first screen (Main Screen) will display several buttons. Choose by your mainboard model.

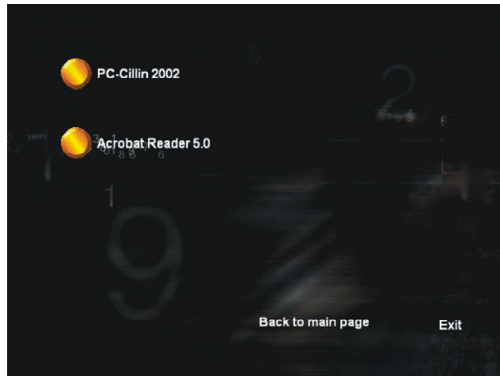


2. On the next screen, click the drivers that you want to install.

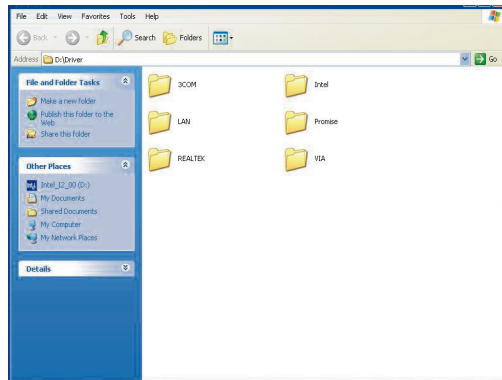


PX865PE/ PX865P Series

3. Back to the main screen, click the “tools” button, you can choose the software to install.



4. Back to the main screen, click the “Browse CD” and you can browse the files on the Driver CD.



Note: You can click the “Exit” button on any screen to exit the Driver CD utility.

Chapter 4: Troubleshooting

Problem 1:

No power to the system. Power light does not illuminate. Fan inside power supply does not turn on. Indicator lights on keyboard are not lit.

Causes:

1. Power cable is unplugged.
2. Defective power cable.
3. Power supply failure.
4. Faulty wall outlet; circuit breaker or fuse blown.

Solutions:

1. Make sure power cable is securely plugged in.
2. Replace cable.
3. Contact technical support.
4. Use different socket, repair outlet, reset circuit breaker or replace fuse.

Problem 2:

System inoperative. Keyboard lights are on, power indicator lights are lit, hard drive is active but system seems “hung”

Causes: Memory DIMM is partially dislodged from the slot on the mainboard.

Solutions:

1. Power Down
2. Using even pressure on both ends of the DIMM, press down firmly until the module snaps into place.

Problem 3:

System does not boot from the hard disk drive but can be booted from the CD-ROM drive.

Causes:

1. Connector between hard drive and system board unplugged.
2. Damaged hard disk or disk controller.
3. Hard disk directory or FAT is corrupted.

Solutions:

1. Check the cable running from the disk to the disk controller board. Make sure both ends are securely attached. Check the drive type in the standard CMOS setup.
2. Contact technical support.
3. Backing up the hard drive is extremely important. Make sure you periodically perform backups to avoid untimely disk crashes.



PX865PE/ PX865P Series

Problem 4:

System only boots from the CD-ROM. The hard disk can be read and applications can be used but booting from the hard disk is impossible.

Causes: Hard Disk boot sector has been corrupted.

Solutions: Back up data and applications files. Reformat the hard drive. Re-install applications and data using backup disks.

Problem 5:

Error message reading “SECTOR NOT FOUND” displays and the system does not allow certain data to be accessed.

Causes: There are many reasons for this such as virus intrusion or disk failure.

Solutions: Back up any salvageable data. Then performs low level format, partition, and then a high level format the hard drive. Re-install all saved data when completed.

Problem 6:

Screen message says “Invalid Configuration” or “CMOS Failure.”

Causes: Incorrect information entered into the BIOS setup program.

Solutions: Review system’s equipment. Reconfigure the system.

Problem 7:

The Screen is blank.

Causes: No power to monitor.

Solutions: Check the power connectors to the monitor and to the system.

Problem 8:

Blank screen.

Causes:

1. Memory problem.
2. Computer virus.

Solutions:

1. Reboot computer. Reinstall memory. Make sure that all memory modules are securely installed.
2. Use anti-virus programs to detect and clean viruses.

Problem 9:

Screen goes blank periodically.

Causes: Screen saver is enabled.

Solutions: Disable screen saver.



PX865PE/ PX865P Series

Problem 10:

Keyboard failure.

Causes: Keyboard is disconnected.

Solutions: Reconnect keyboard. Replace keyboard if you continue to experience problems.

Problem 11:

No color on screen.

Causes:

1. Faulty Monitor.
2. CMOS incorrectly set up.

Solutions:

1. If possible, connect monitor to another system. If no color appears, replace monitor.
2. Call technical support.

Problem 12:

The screen displays "C: drive failure."

Causes: Hard drive cable not connected properly.

Solutions: Check hard drive cable.

Problem 13:

Cannot boot the system after installing a second hard drive.

Causes:

1. Master/slave jumpers not set correctly.
2. Hard drives are not compatible / different manufacturers.

Solutions:

1. Set master/slave jumpers correctly.
2. Run SETUP program and select the correct drive types. Call drive manufacturers for possible compatibility problems with other drives.

Problem 14:

Missing operating system on hard drive.

Causes: CMOS setup has been changed.

Solutions: Run setup and select the correct drive type.

Problem 15:

Certain keys do not function.

Causes: Keys jammed or defective.

Solutions: Replace keyboard.



Appendix I: Over Clocking

Important

Before you attempt to overclock your system, we strongly recommend that you obtain a thorough understanding of all of the variables, procedures, and the potential risks associated with overclocking. Because we cannot control of all of the possible variables that exist (i.e. memory, AGP card, user configurations, cooling apparatus etc), we cannot assume responsibility from damage to any components of your system due to overclocking.

What is overclocking?

Overclocking is accelerating the processing speed of certain components of your system above and beyond what those components were rated for. With this mainboard, depending on the model, you may be able to overclock some or all of the following:

- ◆ **CPU Speed**
- ◆ **FSB (Front Side Bus) frequency**
- ◆ **DDR (Memory) frequency**
- ◆ **AGP (Accelerated Graphics Port) frequency**
- ◆ **PCI (Peripheral Connect Interface) frequency**
- ◆ **SRC (Serial Reference Clock) frequency**

How to calculate your new frequencies.

With this mainboard, the frequencies mentioned above are calculated using individual formulas. These formulas have a single “CPU Host Frequency” in common. For each of the items above there is also a multiplier or a divisor that is applied to the “CPU Host Frequency” to determine the final frequency for each component as shown in the following formulas.

CPU Speed	=	CPU Host Frequency	*	CPU Clock Ratio
FSB frequency	=	CPU Host Frequency	*	FSB multiplier
DDR frequency	=	CPU Host Frequency	*	DDR:CPU Ratio
AGP frequency	=	CPU Host Frequency	/	AGP divisor
PCI frequency	=	CPU Host Frequency	/	PCI divisor
SRC frequency	=	CPU Host Frequency	/	SRC divisor

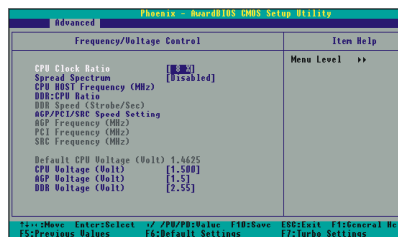
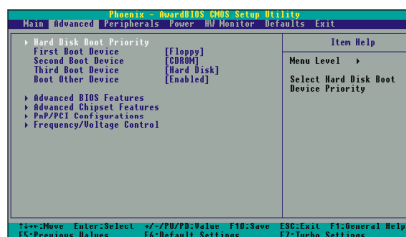
Configuring your system for overclocking is simply understanding the formulas above and going into the BIOS Setup Utility and changing “DDR:CPU Ratio”, “CPU Clock Ratio” and “CPU Host Frequency”.

Note that the FSB multiplier for Intel based mainboards will always be fixed at 4. The AGP, PCI and SRC frequencies are all determined by the BIOS setting AGP/ PCI/ SRC Speed Setting.

PX865PE/ PX865P Series

How to configure your new frequencies.

As mentioned you must enter the BIOS Setup Utility in order to begin configuring overclocking parameters. After you reboot your system, press the “Del” key when prompted to enter the BIOS Setup Utility. The parameters for overclocking will be found in the “Advanced” screen as part of the “Frequency/Voltage Control” section.



BIOS Setup Utility Overclocking Variables

The following items are all variables in the BIOS Setup Utility that are related to overclock configurations. See the BIOS section for additional information about these fields including available options.

CPU Clock Ratio

The CPU Clock Ratio is used to determine the CPU Speed. The CPU Clock Ratio may be locked by the CPU manufacturer. In this case the value will be displayed but will not be configurable.

CPU Host Frequency (MHz)

This field represents the CPU Clock that is used by all of the previously described formulas to arrive at the individual frequencies (CPU Speed, FSB, DDR, AGP, PCI, SRC).

DDR:CPU Ratio

This field is used to calculate DDR frequency. To calculate the DDR frequency, simply take the “CPU Host Frequency” and multiply it by this number.

CPU Voltage/ AGP Voltage/ DDR Voltage

As you increase the frequency of your components, the voltages may not be sufficient to support the faster speeds and you may begin to encounter problems. When you increase voltages it is important to remember that you will be increasing the heat generated by the chipsets which could result in damage. So it is recommended that you slowly increase these values in the increments provided by the BIOS Setup Utility. The CPU, AGP and DDR all have individual configurable voltage options.

Spread Spectrum

We recommend that you disable this function before you overclock your system.

PX865PE/ PX865P Series

AGP/PCI/SRC Speed Setting

This item determines the AGP, PCI and SRC frequencies (speed settings). You can set these frequencies using the supplied BIOS options. One of the options available to you is “Auto, Auto, Auto”. Using the “Auto, Auto, Auto” option will instruct the system to automatically calculate these frequencies based on the factory default “CPU Host Frequency” setting, the current “CPU Host Frequency” setting and the formulas in the table below. Note that the factory default “CPU Host Frequency” is the value of the “CPU Host Frequency” when you first received your system.

Factory Default “CPU Host Frequency”	Formulas (using the “Auto, Auto, Auto option)
100	AGP frequency = <i>current</i> CPU Host Frequency / 1.5 PCI frequency = <i>current</i> CPU Host Frequency / 3 SRC frequency = <i>current</i> CPU Host Frequency / 1
133	AGP frequency = <i>current</i> CPU Host Frequency / 2 PCI frequency = <i>current</i> CPU Host Frequency / 4 SRC frequency = <i>current</i> CPU Host Frequency / 1.33
200	AGP frequency = <i>current</i> CPU Host Frequency / 3 PCI frequency = <i>current</i> CPU Host Frequency / 6 SRC frequency = <i>current</i> CPU Host Frequency / 2

To determine your new frequencies, you must first take the factory default “CPU Host Frequency” and then determine the corresponding formulas according to the table above. Second, take the current “CPU Host Frequency” setting and apply it to the formulas to arrive at your new frequencies.

* Your AGP, PCI or SRC devices may begin to malfunction because they are unable to handle certain speeds that are calculated using the “Auto,Auto,Auto” option, in which case you can fix the frequencies for these devices using the other available options for this field. And if you want to overclock a system with SATA HDDs, we strongly remind you to fix the AGP/PCI/SRC Speed to “66.7, 33.4, 100.2”.

Configuration Suggestions

Before attempting overclocking, you should write down all of the default BIOS settings for the variables described in the previous sections. This is so you can return to the original values if you run into problems.

The next suggestion is to adjust in small steps and not to increase the options too fast. This is especially true with Voltage since increasing the voltage can significantly increase temperature. After adjusting the BIOS settings and rebooting your system, always check the CPU temperatures that are displayed in the BIOS Setup Utility (HW Section). Tolerable temperatures for your CPU will be listed with the specifications provided by your CPU manufacturer.

Because increasing voltages is the biggest factor in increasing temperatures, you should only increase voltages as a last option when your system is continuing to experience problems. When you do increase the voltages, increase them only one increment at a time.

Testing

Even though you have configured your overclocking options and have successfully booted to your operating system, it doesn't mean that you have successfully overclocked your system. Testing is an equally important aspect of overclocking and you must stress your configurations thoroughly to ensure stability. It is better to discover that your system locks up during testing rather than experiencing the same while editing valuable information.

There are several utility programs designed specifically for intensive hardware configuration testing such as 3Dmark2001SE and Winstone. With every configuration adjustment you should rerun your utilities. Testing is a time consuming procedure. Again, it is not within the scope of this document to discuss testing utilities in detail. You can find additional information on the Web.

Cooling the components on your mainboard.

Proper cooling is one the most important aspects of overclocking. Cooling refers to the cooling fans, heat sinks, and thermal material/grease that are used. When overclocking, it is highly recommended that you acquire a large powerful cooling fan with a heavy duty heat sink. Also make sure that you apply certified thermal material between the CPU and heatsink. It is also recommended that you make use of all of the fan attachments and make sure that cable clutter within the casing is kept to a minimum. It is beyond the scope of this document to explain cooling equipment in detail so we recommend that you consult the Web for more information. CPU manufacturers may also have a list of recommended, certified cooling equipment.

The Watch Dog Timer

Some mainboards come with a special feature called the Watch Dog Timer used to simplify the process of experimenting with overclocking. When you go too far with your overclocking configurations there is a chance that your system may become unstable and hang. Even after a reboot, the system may hang before you can even reach the BIOS Setup Utility to lower your settings. The usual procedure with most Mainboards is to open up your case and reset a CMOS jumper on the mainboard to restore the original default settings which can be a cumbersome activity when testing.

The Watch Dog Timer however, will monitor the most recent boot information or POST (Power On Self Test) status to determine if the system booted successfully. If the last POST status was "not successful", it will be assumed there were configuration problems and the system will automatically reset the BIOS configurations which will allow your system to boot again.

PX865PE/ PX865P Series

Example:

This example shows you how to overclock the CPU Internal Clock, DDR frequency and FSB frequency for an Intel based mainboard. Note that the options that are supplied with your version of the BIOS may vary slightly. The example is for reference only.

Given:

Mainboard:	Intel based mainboard
CPU:	Pentium 4 (1.73 GHz, Fixed CPU Ratio = 13)
DDR:	DDR333 SDRAM
CPU Speed	= CPU Host Frequency * CPU Clock Ratio
FSB	= CPU Host Frequency * 4
DDR Speed	= CPU Host Frequency * DDR:CPU Ratio
AGP/PCI/SRC Speed Setting	sets to "66.7, 33.4, 100.2"

Before Overclocking:

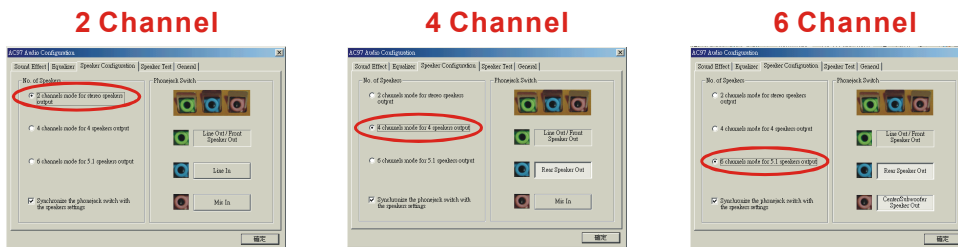
CPU Ratio (Fixed)	= 13	
CPU Host Frequency	= 133	
DDR:CPU Ratio	= 2.5	
AGP/PCI/SRC Speed Setting show	= 66.7 MHz/ 33.4 MHz/ 100.2 MHz	
CPU Speed	= 133 * 13	= 1729 MHz
FSB	= 133 * 4	= 532 MHz
DDR Speeds	= 133 * 2.5	= 333 (DDR333)

After Overclocking:

CPU Ratio (fixed)	= 13	
CPU Host Frequency	= 150	
DDR:CPU Ratio	= 2.66	
AGP/PCI/SRC Speed Setting	= 66.7 MHz/ 33.4 MHz/ 100.2 MHz	
CPU Speed	= 150 * 13	= 1950 MHz
FSB	= 150 * 4	= 600 MHz
DDR Speeds	= 150 * 2.66	= 400 (DDR400)

Appendix II: 5.1 Channel Setup

1. After into the system, click the audio icon  from the Windows screen.
2. Click Speaker Configuration button, you can see the screen like the picture below.
3. You can choice 2, 4 or 6 channel by your speakers.




Super 5.1 Channel Audio Effect

This mainboard comes with an ALC650 Codec which supports high quality 5.1 Channel Audio Effects. With ALC650, you are able to use standard line-jacks for surround audio output without connecting to any auxiliary external modules. To use this function, you have to install the audio driver in the bonus Pack CD as well as an audio application supporting 5.1 Channel audio effects. See the audio Port Connectors in the Hardware Installation section for a description of the output connectors.

Speaker Test

Make sure the cable is firmly into the connector.

1. Click the audio icon  from the Windows screen.
2. Click Speaker Test button, you can see the screen like the pictures below.
3. Select the speaker which you want to test by clicking on it.

