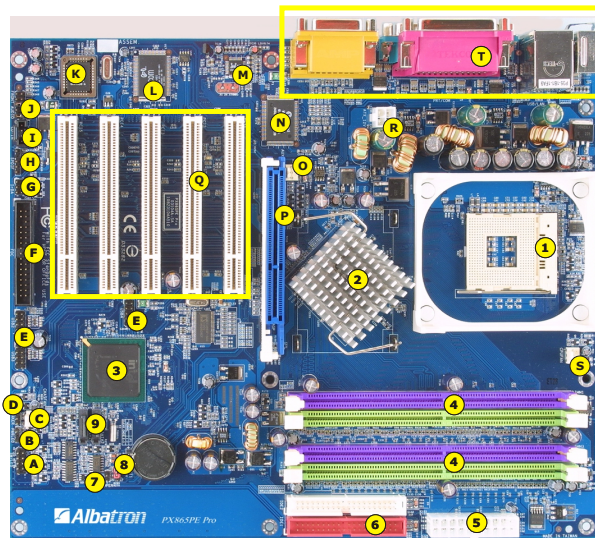
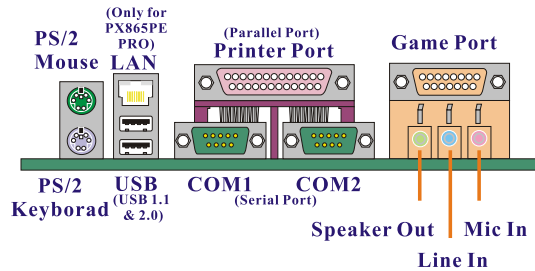


## Albatron Socket 478 Mainboard PX865PE PRO/ PX865 PE

- 1 Socket 478 CPU Configuration. Supports Intel Pentium® 4 processors
- 2 Memory Controller Hub <Intel 82865PE>
- 3 I/O Controller Hub <Intel ICH5>
- 4 DDR DIMM Sockets Supports DDR400/ 333/ 266 (PC3200/ 2700/ 2100) unbuffered non-ECC DIMMs
- 5 ATX 20-pin Power Conn. (ATX\_PWR)
- 6 IDE Connectors Ultra ATA 66/100
- 7 Case Open Warning Header (CASE OPEN)
- 8 Clear CMOS data Header (JP1)
- 9 Serial ATA Connectors Support SATA 150
- A Front Panel Indicator Header(SW/LED)
- B Front 3-pin Power LED Header (PWRLLED)
- C System Fan Header (CHASFAN) Supports monitor fan speed function
- D Speaker Header (SPEAKER)
- E Front USB Headers (USB2/ 3/ 4)



- F Floppy Disk Connector (FDC)
- G Infrared Header (IrDA)
- H S/PDIF Digital In/Out (SPDIF)
- I CD-Audio In Header (CD-IN)
- J Front Audio Header (FRONT AUDIO)
- K BIOS ROM PHOENIX-AWARD™ BIOS
- L LAN Chip (Only for PX865PE PRO)
- M Audio CODEC <ALC650> 6 Channel audio output
- N Winbond I/O Chip <W83627HF>
- O Auxiliary FAN Header (AUXFAN) Supports monitor fan speed function
- P AGP Slot (AGP 3.0, 8X/ 4X)
- Q PCI Slots (PCI1-5)
- R ATX 12V Power Conn. (ATX\_12V)
- S CPU Fan Header (CPUFAN) Supports monitor fan speed function
- T Back Panel Connectors (for detail please refer to Fig.1)

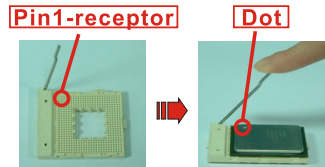


(Fig.1)

Please follow the steps below to install your system.

### STEP 1: CPU INSTALLATION

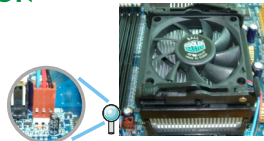
1. Locate the CPU socket on your mainboard and nudge the lever away from the socket. Then lift the lever to a 90-degree angle.
2. On the socket, locate the corner that has the pin-1 receptor. This corner will be near the end of the lever. Match the notch on the CPU with the pin-1 receptor on the socket. Lower the CPU onto the socket. The bottom of the CPU should be flush with the face of the socket.
3. Lower the lever until it snaps back into position. This will lock down the CPU.



**Attention**  
The CPU should fall easily into the socket. Using force will bend the pins.

### STEP 2: CPU FAN INSTALLATION

1. Lower the CPU fan onto the CPU and use the clasps on the fan to attach it to the socket.
2. Extend the power cable from the fan and insert it onto the CPUFAN header.



**Attention**  
We strongly recommend that you use an Intel approved heat sink with thermal grease applied to the CPU. You can visit the Intel website and review the processor installation procedures. <http://www.intel.com>

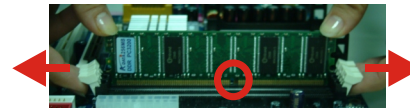
### STEP 3: SETUP CPU FREQUENCY

1. You can configure the CPU Host Frequency, CPU Clock Ratio, DDR:CPU Ratio in the BIOS Setup Utility. (Before you configure these options, please make sure that your CPU ratio can be adjusted.)
2. The defaults depend on your CPU frequency. These items are for over-clock configuration.  
CPU speed=CPU Clock Ratio x CPU Host Frequency  
DDR speed=DDR:CPU Ratio x CPU Host Frequency

**Attention**  
We recommend you set the CPU speed using the defaults to ensure a stable system.

### STEP 4: DIMM MODULE INSTALLATION

1. Pull the retaining clips on each side of the memory socket away from the socket. Match the notch on the bottom of the DIMM module with the same pattern in the memory socket. Lower the DIMM into the socket.
2. Press the memory module into the memory socket until the retaining clips lock the memory module in place.
3. Repeat steps 1 & 2 for the other DIMM modules.



### STEP 5: INSTALL MAINBOARD INTO THE PC CHASSIS

1. Position the mainboard into the chassis and use the retaining screws to secure it into place.

**Attention**  
To prevent short circuits we recommend that you use copper pillars or other insulation between the mainboard and case.



### STEP 6: POWER SUPPLY INSTALLATION

1. Insert and secure the power supply with retaining screws.

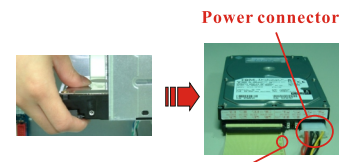
**Attention**  
We recommend that you use an Intel approved power supply.



### STEP 7: INSTALL IDE / FLOPPY DEVICES

#### Install Hard Disk

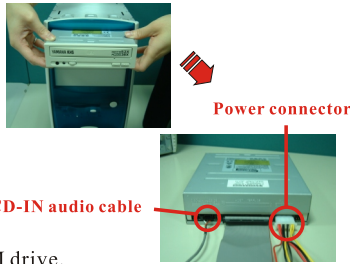
1. Install the hard disk into an empty bay and secure it with retaining screws.
2. Plug the IDE cable into the hard disk.
3. Attach the power cable to the hard disk and attach the other end to the power supply.



The red line means Pin 1.

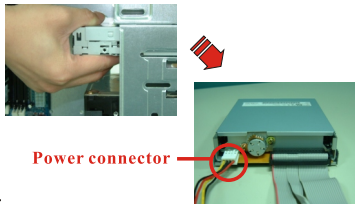
## Install CD-ROM/DVD-ROM

1. Remove the 5.25" front panel cover from the case.
2. Insert the CD-ROM/ DVD-ROM into an empty bay and secure it to the case.
3. Connect the IDE cable to the drive, then connect the power cable.
4. Connect the CD audio cable to the CD-IN header, then plug it into the CD-ROM/DVD-ROM drive.



## Install Floppy Disk

1. Remove the 3.5" front panel cover from the case.
2. Insert the floppy disk drive into an empty bay, and secure it to case.
3. Connect the floppy cable to the floppy disk drive and then connect the power cable.



Connect the IDE and Floppy cable to the IDE and the Floppy connectors on the mainboard.

## STEP 8: CONNECT FRONT PANEL INDICATORS / SPEAKER

1. Connect the front panel cables to SW/LED, and SPEAKER header on the mainboard. Please refer to the table with the pin assignments.

Pin No.	Assignment	Function	Pin No.	Assignment	Function
1.	HD LED(+)	Hard Drive LED	2.	Power LED(+)	Power LED
3.	HD LED(-)		4.	Power LED(-)	
5.	Reset Control(-)	Reset Button	6.	Power Button(+)	Power-on Button
7.	Reset Control(+)		8.	Power Button(-)	
9.	NC	NC	10.	NC	NC



### Attention

The wires from the front panel are typically described on the case housing. You can use those descriptions to match the wires with the SW/LED header on the mainboard. The dark colored wires are usually the positive leads, and the white wires are usually the negative leads. If there is a 3-pin power LED cable on the front panel of a computer case. You have to attach it to the 3-pin power LED connector (PWRLED).

## STEP 9: INSTALL ADD-ON CARDS IN THE EXPANSION SLOTS

1. Remove the case cover.
2. Insert the expansion card into an empty slot.



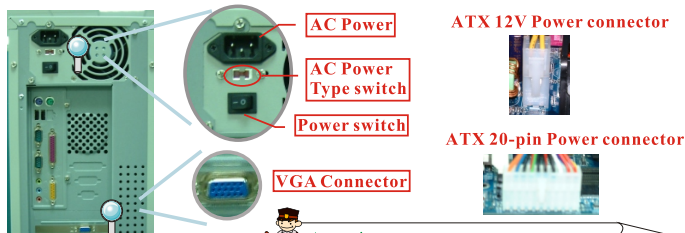
### Attention

AGP cards must be installed into the AGP slot.



## STEP 10: CONNECT BACK PANEL I/O DEVICES AND ATX POWER

1. Please refer to Fig.1 when connecting external peripherals to the Back-Panel (e.g. keyboard, mouse, monitor ... etc.)
2. Plug the 4-pin power cable into the ATX\_12V connector, then plug the 20-pin power cable into the ATX\_PWR connector.
3. Connect the AC power cord to the power supply.
4. Check and adjust the AC power type (115V or 230V).
5. Turn on the main power.



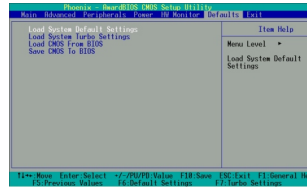
### Attention

We strongly recommend that you check the AC power type before you connect the AC power cord. If you choose the wrong AC power type, it may damage the power supply or cause the system to be underpowered.

1. The pictures are for your reference only and may vary based on model and brand.
2. Unplug your computer when installing components and configuring switches and pins.
3. This mainboard contains very delicate IC chips. Use a grounded wrist strap when working with the system.
4. Do not touch the IC chips, leads, connectors or other components.
5. Unplug the AC power cord when you install or remove any device on the mainboard.

## STEP 11: BIOS SETUP

- During the boot process, press the <Delete> key when prompted to access the BIOS Setup.

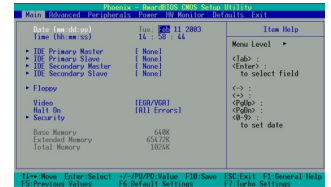
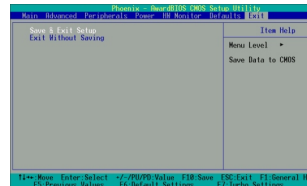


### 1. Load Defaults

Scroll over to the <Defaults> item on the top menu bar. Scroll down to the <Load System Default Settings> item and press Enter.

### 2. Setup Date/Time

Scroll over to the <Main> item on the top menu bar. Scroll down to the Date, Time fields to adjust them.

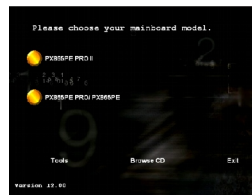


### 3. Save & Exit Setup

Scroll over to the <Exit> item on the top menu bar to save your configurations to CMOS and exit BIOS Setup.

## STEP 12: SOFTWARE INSTALLATION

- Place the Driver CD into the CD-ROM drive. The installation utility will auto-run. You can also launch the program manually.



1. The first screen displays several buttons. Click by your motherboard model.

2. On the next screen, click the drivers that you want to install.



### Attention

If you are using the USB 2.0 devices with Windows 2000/XP, you will need to install the USB 2.0 driver from Microsoft® website.



## STEP 13: TROUBLESHOOTING

- No power to the system power light does not illuminate, fan inside power supply does not work, indicator lights on keyboard do not illuminate.

### Solutions:

1. Make sure the power cable is securely plugged in.
2. Make sure all the cables of the mainboard are connected.
3. Make sure the driver CD contents were installed completely.
4. Review all of the steps to make sure installation is complete.

If you need more detailed information about this mainboard, please refer to the PX865PE/P Series User Manual or visit our website: <http://www.albatron.com.tw>

### Package contents

1. PX865PE PRO/ PX865PE Mainboard
2. PX865PE/ P Series User Manual
3. PX865PE/ PX865PE DIY Installation Guide
4. Installation and Setup Driver CD
5. HDD cable/ FDD cable
6. USB bracket (optional)
7. SATA Power cord (optional)
8. SATA Cable (optional)