

**LPX Form Factor Motherboard with Intel®Pentium®  
4/Celeron® D LGA775 800MHz,Daul GbE, SATA, IDE, USB  
2.0, 6XCOM and Audio**

# **POS-6614**

## **Quick Installation Guide**

**Version 1.0**

Aug. 20, 2006

### **Package List**

POS-6614 package includes the following items:

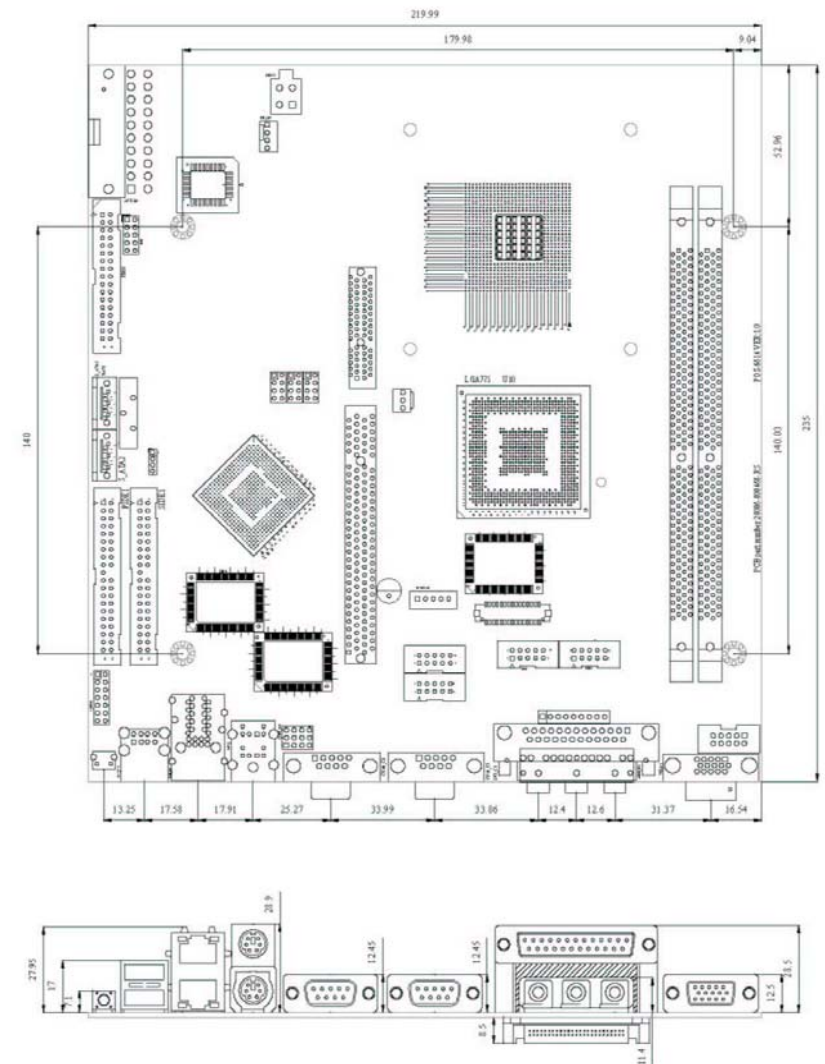
- 1 xPOS-6614 Single Board Computer
- 1 xATA66/100 Flat Cable
- 1 xDual RS-232 Cable
- 2 xSATA Cable
- 1 xSATA Power Cable
- 1 x mini jumper pack
- 1 x Utility CD
- 1 x QIG (Quick Installation Guide)



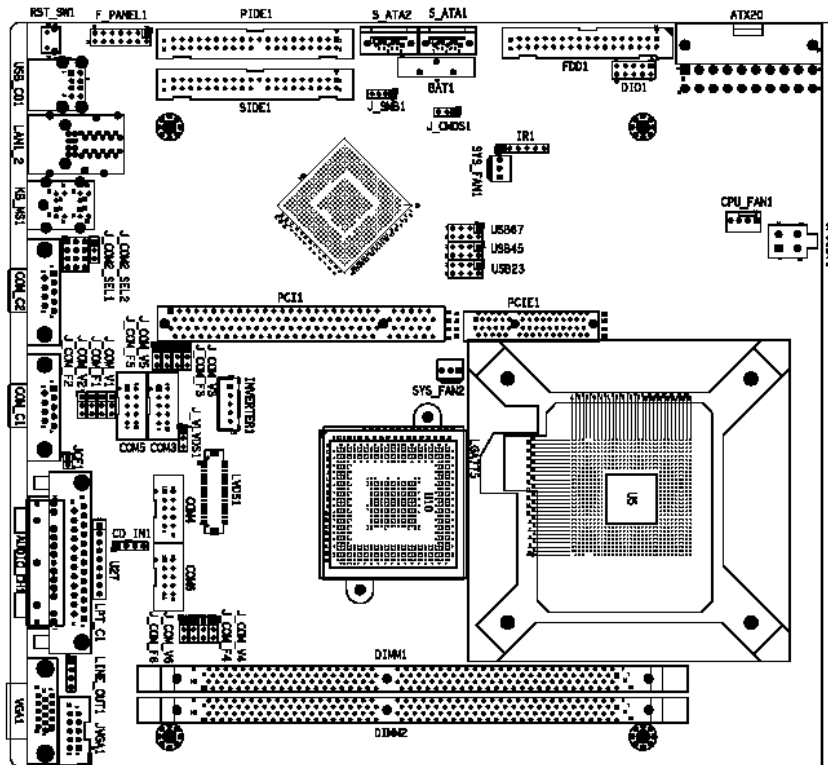
©2006 Copyright by IEI Technology corp.  
All rights reserved.

## Specifications

- CPU: LGA775 Inter® Pentium® 4/Celeron® D support 800/533 MHz FSB up to 3.4GHz.
- System Chipset: SiS 661CX+SiS966
- BIOS: AMI BIOS
- System memory: 2x 184-pin DDR 333/400MHz up to 2GB
- Ethernet: Dual RTL8110SC GbE
- I/O
  - 8 x USB 2.0
  - 5 x RS-232
  - 1 x RS-232/422/485
  - 1 x CFII
  - 2 x IDE
  - 1 x FDD
  - 1 x LPT
  - 2 x SATA-150 with RAID 0,1, function support
  - 1 x PS/2 for KB/MS
  - 1 x IrDA
- Expansion: 1xPCI
  - 1xPCI-E x 4 connector with one PCI-E x 1 support
- Digital I/O: 8 bit digital I/O,4 input/ 4 output
- Super I/O: W83697HG
- Audio: Realtek ALC655 with AC'97 Codec
- Display: - CRT integrated in SiS 661CX
  - Dual channel 24-bit LVDS by SiS 302LV
- WDT: Software programmable supports 1-255 sec. System reset
- Power Supply: ATX Support
- Power Consumption
  - 5V@2.84A,+12V@7.12A,+3.3V@3.48A(Pentium®4 3.0GHz/800MHz,DDR 400MHz 1GB\*2)—3D MARK
- Temperature: Operation:0~60°C(32~140°F)
- Humidity: Operation:5%~90% non-condensing
- Dimension: 235mm x 220mm
- Weight: GW: 1000g; NW: 500g



## Board Layout: Jumper and Connector Locations



## Ordering Information

- POS-6614-R10  
POS-6614 CPU Board with inter® Pentium® 4 LGA775 FSB 800MHz, VGA, PCI-E GbE, SATA and Audio
- CF-520-RS:CPU Cooler
- CB-USB02-RS: USB cable
- PCIER-01-R10  
PCI and PCIE riser card with PCI ,PCI-E x 1 slot and PCI Express.
- 32200-000017-RS:FDD Cable

## Jumpers setting and Connectors

### J\_CMOS1 : Clear CMOS Setup

J_CMOS1	DESCRIPTION
1-2 (default)*	Keep CMOS Setup (Normal Operation)
Short 2-3	Clear CMOS Setup

### J\_COM\_Fx : Set pin9 of COMx as signal or voltage

1-2	voltage
2-3	RING

### J\_COM\_Vx : Set pin9 of COMx voltage

1-2	+5V
2-3	+12V

### J\_COM2\_SEL1, J\_COM2\_SEL2 : COM2 mode select (RS-232/422/485)

J_COM2_SEL1	J_COM2_SEL2	COM2 mode
1-2, 4-5, 7-8, 10-11	1 - 2	RS-232
2-3, 5-6, 8-9, 11-12	2 - 3	RS-422
2-3, 5-6, 7-8, 10-11	2 - 3	RS-485

### J\_VLVD1 : Set The Panel Voltage

J_VLVD1	DESCRIPTION
1-2 (default)*	Set The Voltage Level Of Panel To VCC3
Short 2-3	Set The Voltage Level Of Panel To VCC

### J\_CF1 :

J_CF1	DESCRIPTION
N/C (default)*	Select CF card as master
Short 1-2	Select CF card as slave

**J\_SMB1: SMBus Connector**

PIN NO.	DESCRIPTION
1	5V
2	SMBCLK
3	SMBDATA
4	GND

**USB23, USB45, USB67 : Internal USB Connector**

PIN	DESCRIPTION	PIN	DESCRIPTION
1	VCC	2	GND
3	DATA-	4	DATA+
5	DATA+	6	DATA-
7	GND	8	VCC

**IR1: IrDA connector**

PIN NO.	DESCRIPTION
1	VCC
2	NC
3	IR-RX
4	GND
5	IR-TX
6	CIR-RX

**CD\_IN1**

PIN NO.	DESCRIPTION
1	CD-In L
2	Ground
3	Ground
4	CD-In R

**LINE\_OUT1**

PIN NO.	DESCRIPTION
1	Line-Out L
2	Ground
3	Ground
4	Line-Out R

**COM3~COM6 : Internal Serial Port Connector**

PIN NO.	DESCRIPTION
1	DATA CARRIER DETECT (DCD)
2	RECEIVE DATA (RXD)
3	TRANSMIT DATA (TXD)
4	DATA TERMINAL READY (DTR)
5	GND (GND)
6	DATA SET READY (DSR)
7	REQUEST TO SEND (RTS)
8	CLEAR TO SEND (CTS)
9	RING INDICATOR (RI)
10	GND (GND)

**Inverter1**

PIN NO.	DESCRIPTION
1	LCD_ADJ
2	GND1
3	12V
4	GND2
5	BL_EN

**CPU12V1 : CPU POWER Connector**

**ATX-12V1 (CPU)**

PIN NO.	DESCRIPTION	PIN NO.	DESCRIPTION
1	GND	2	GND
3	+12V	4	+12V

**LVDS1: LVDS Connector**

PIN NO.	DESCRIPTION	PIN NO.	DESCRIPTION
1	GND1	2	GND2
3	A_Y0	4	A_Y0#
5	A_Y1	6	A_Y1#
7	A_Y2	8	A_Y2#
9	A_CK	10	A_CK#
11	A_Y3	12	A_Y3#
13	GND3	14	GND4
15	B_Y0	16	B_Y0#
17	B_Y1	18	B_Y1#
19	B_Y2	20	B_Y2#
21	B_CK	22	B_CK#
23	B_Y3	24	B_Y3#
25	GND5	26	GND6
27	VCC1	28	VCC2
29	VCC3	30	VCC4

**DIO1 : Digital Input / Output Connector**

PIN NO.	DESCRIPTION	PIN NO.	DESCRIPTION
1	Ground	2	VCC
3	Output 3	4	Output 2
5	Output 1	6	Output 0
7	Input 3	8	Input 2
9	Input 1	10	Input 0

**F\_PANEL1 : External Switches and Indicators panel**

	PIN	DESCRIPTION	PIN	DESCRIPTION	
Power LED	1	+5V	2	+5V	Speaker
	3	N/C	4	N/C	
	5	GROUND	6	N/C	
PWRBTN	7	PWRBTN+	8	Speaker	RESET
	9	PWRBTN-	10	N/C	
HDDLED	11	+5V	12	Reset-	RESET
	13	HDLED-	14	GND	

**CPU\_FAN1 : CPU Fan Connector**

PIN NO.	DESCRIPTION
1	Ground
2	+12V
3	Rotation Signal
4	Control

**SYS\_FAN1,SYS\_FAN2 : CPU Fan Connector**

PIN NO.	DESCRIPTION
1	Ground
2	+12V
3	Rotation Signal