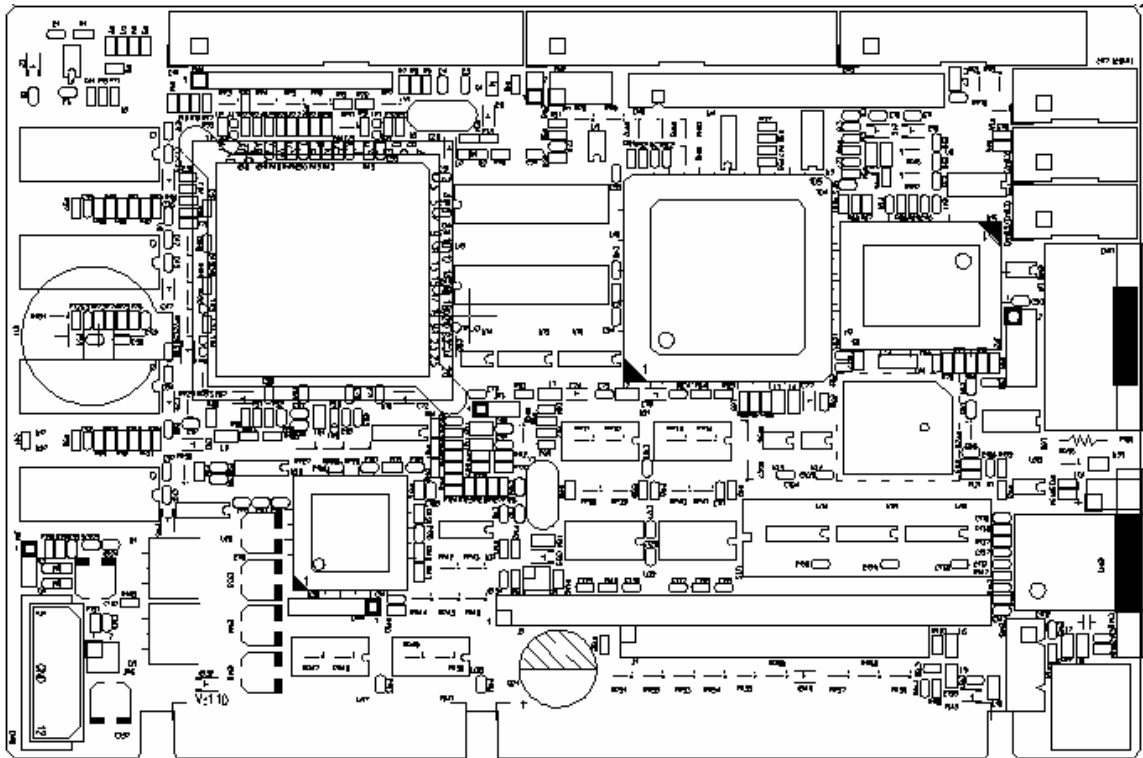


PI-6489VN

Embedded STPC ELITE 5x86DX2-133 CPU SBC with CRT/LCD
VGA, LAN, DiskOnChip, IDE CF,SSD Socket and 32MB SDRAM



■ Features

- ◆ PC/AT ISA-BUS Embedded CPU Card
- ◆ Embedded STPC ELITE 5x86DX2-133MHz low power CPU (**Fanless**)
- ◆ Integrated L1 write back cache.
- ◆ 64-Bit SDRAM Controller
- ◆ On-Board 32Mbyte SDRAM (Up to 64MB)
- ◆ High driving ISA (PC/AT) bus
- ◆ On board CRT/LCD Flat Panel VGA Controller
- ◆ Support 10/100Mbps fast Ethernet
- ◆ Enhanced IDE Controller
- ◆ On board floppy disk drive controller
- ◆ One RS-232/RS-485/RS-422 and One RS-232 serial port
- ◆ Overvoltage protection for RS-422/485 up to 25kV
- ◆ One SPP/ECP/EPP Bi-direction Parallel Port.
- ◆ 255 level Watchdog timer
- ◆ Provide One DiskOnChip Socket
- ◆ Type-II **CompactFlash™** slot (option)
- ◆ Provide EEPROM for user R/W
- ◆ Single Power supply +5VDC
- ◆ Power Consumption: +5VDC/1.6A

■ Specifications

CPU:

- ◆ Embedded THOMSON STPC ELITE 5x86DX2-133MHz low power CPU(**Fanless**)

Bus interface: PC/AT ISA bus
(High driving ISA bus)

System BIOS: Award PnP BIOS

System Memory:

- ◆ 64-Bit SDRAM Controller
- ◆ On-board 32MB SDRAM (Up to 64MB)

Display:

- ◆ On-board C&T65550 SVGA CRT/LCD PCI bus Controller
- ◆ Supports TFT, DSTN, EL, Mono LCD Flat Panel
- ◆ On-board 1MB Display Memory up to 2MB
- ◆ Resolution 640x480 up to 1024x768 (256 colors)

LAN: 10/100 Mbps RTL8139C PCI bus Ethernet controller and RJ-45 connector

IDE Interface: One EIDE Channel

CompactFlash Slot: One IDE CompactFlash Type I/II Slot and Support +5VDC or +3.3VDC Card (option)

Floppy Disk Drive Interface:
Supports Up to two floppy disk drives

Serial Ports:

- ◆ One RS-232C and one RS-232/485/422 serial Ports.
- ◆ Overvoltage protection for RS-422/485 up to 25kV

Printer Port: One SPP/ECP/EPP Bi-direction Parallel Port.

KBD. and PS/2 Mouse connector.

Solid state disk:

- ◆ Support one DiskOnChip socket
- ◆ On-Board 1.7M Byte Flash Disk (option) and one 32-pins ROM/Flash disk socket

EEPROM : Provide 256 words(16-bits) EEPROM register for user R/W

Watch Dog timer: The watch dog timer range from 0 to 254 sec

■ Environmental

- ◆ Power Supply Voltage : + 5V/1.6A
- ◆ Operating Temperature: 0 ~ 60° C (32 ~ 140° F)
- ◆ Dimensions: 186.79mm(L) x 123.19mm(W)

■ Order information

PI-6489V: 5x86DX2-133 CPU with VGA, 1.7MB Flash Disk and 32MB SDRAM

PI-6489VA: 5x86DX2-133 CPU with VGA and 32MB SDRAM

■ Flexible OEM/ODM design