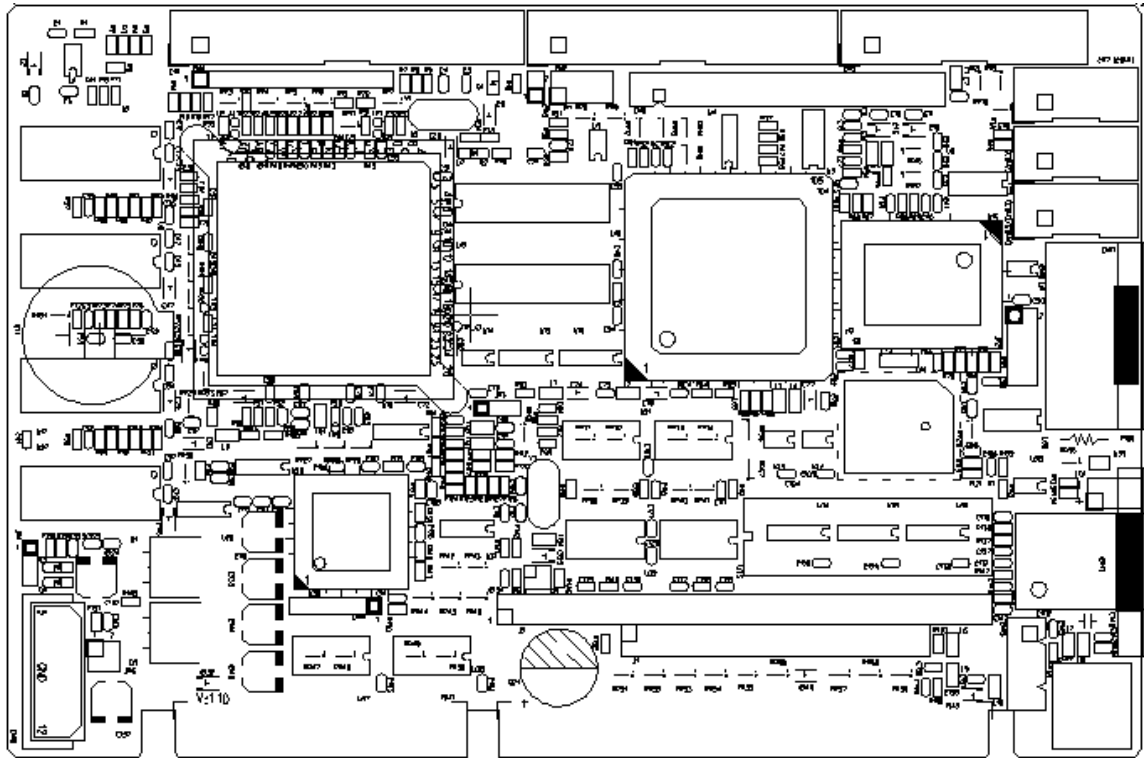


# PI-6489CN

Embedded STPC Consumer-II 5x86DX2-133 CPU SBC with  
VGA,LAN, IDE CF Slot, DiskOnChip Socket and 32MB SDRAM



## ■ Features

- ◆ PC/AT ISA-BUS Half size CPU Card
- ◆ Embedded STPC Consumer-II 5x86DX2-133MHz low power CPU (**Fanless**)
- ◆ Integrated L1 write back cache.
- ◆ 64-Bit SDRAM Controller
- ◆ On-Board 32Mbyte SDRAM (Up to 64MB)
- ◆ High driving ISA (PC/AT) bus
- ◆ On board CRT VGA Controller
- ◆ Support 10/100Mbps fast Ethernet
- ◆ Enhanced IDE Controller
- ◆ On board floppy disk drive controller
- ◆ One RS-232/RS-485/RS-422 and One RS-232 serial port
- ◆ Overvoltage protection for RS-422/485 up to 25kV
- ◆ One SPP/ECP/EPP Bi-direction Parallel Port.
- ◆ 255 level Watchdog timer
- ◆ Provide One DiskOnChip Socket
- ◆ Type-II CompactFlash™ slot
- ◆ Provide EEPROM for user R/W
- ◆ Single Power supply +5VDC
- ◆ Power Consumption: +5VDC/1.6A

## ■ Specifications

### CPU:

- ◆ Embedded THOMSON STPC Consumer-II 5x86DX2-133MHz low power CPU(**Fanless**)

### Bus interface: PC/AT ISA bus

(High driving ISA bus)

### System BIOS: Award PnP BIOS

### System Memory:

- ◆ 64-Bit SDRAM Controller
- ◆ On-board 32MB SDRAM (Up to 64MB)

### Display:

- ◆ On-board SVGA CRT PCI bus Controller
- ◆ Supports up to 1024x768 display resolutions at 75hz
- ◆ UMA architecture, share system memory up to 4MB

**LAN:** 10/100 Mbps RTL8139C PCI bus Ethernet controller and RJ-45 connector

**IDE Interface:** One EIDE Channel

**CompactFlash Slot:** One IDE CompactFlash Type I/II Slot and Support +5VDC or +3.3VDC Card

**Floppy Disk Drive Interface:** Supports Up to two floppy disk drives

### Serial Ports:

- ◆ One RS-232C and one RS-232/485/422 serial Ports.
- ◆ Overvoltage protection for RS-422/485 up to 25kV

**Printer Port:** One SPP/ECP/EPP Bi-direction Parallel Port.

**KBD. and PS/2 Mouse connector.**

### Solid state disk:

- ◆ Support one DiskOnChip socket
- ◆ On-Board 1.7M Byte Flash Disk (option) and one 32-pins ROM/Flash disk socket

**EEPROM :** Provide 256 words(16-bits) EEPROM register for user R/W

**Watch Dog timer:** The watch dog timer range from 0 to 254 sec

## ■ Environmental

- ◆ Power Supply Voltage : + 5V/1.2A
- ◆ Operating Temperature: 0 ~ 60° C (32 ~ 140° F)
- ◆ Dimensions: 186.79mm(L) x 123.19mm(W)

## ■ Order information

**PI-6489C:** 5x86DX2-133 CPU with VGA, 1.7MB Flash Disk and 32MB SDRAM

**PI-6489CA:** 5x86DX2-133 CPU with VGA and 32MB SDRAM

## ■ Flexible OEM/ODM design