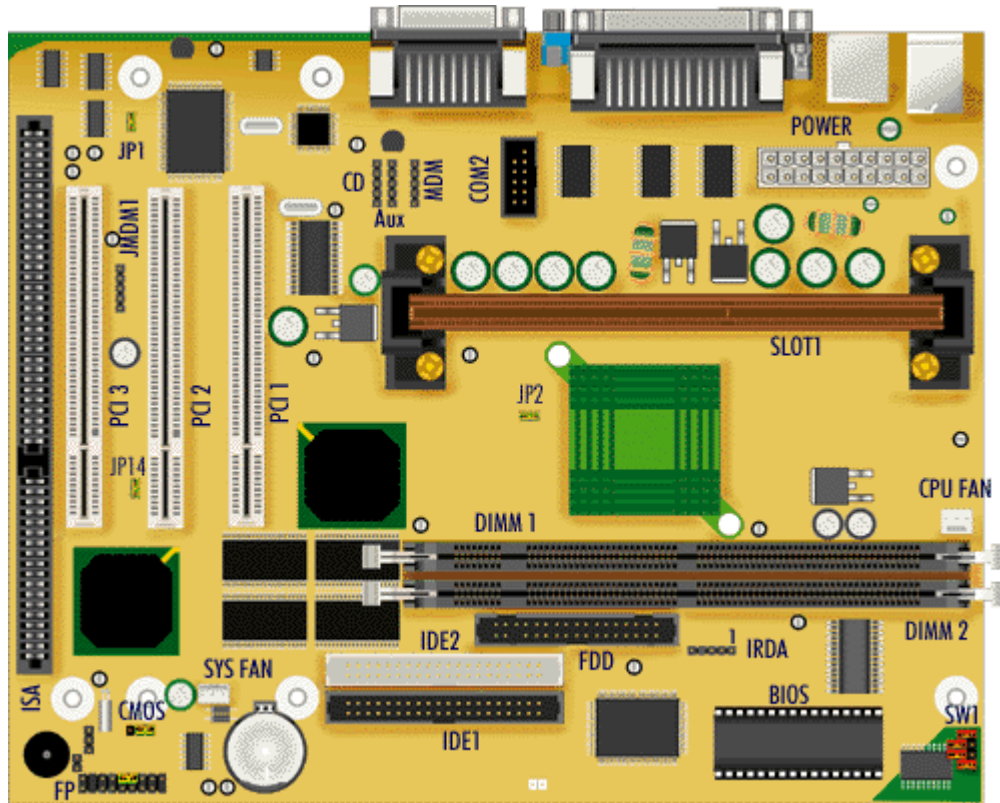


# Packard Bell Tempest M/Board



## Specification

- **Audio** : Creative Soundblaster Audio PCI ES1371 or ES1373.
- **Battery** : 3.3V, 100mAH lithium battery, in socket.
- **BIOS** : Award BIOS, 2MB Flash Device.
- **Cache** : Integrated on the SEC cartridge.
- **Chipset** : Intel 82440BX PCI set (82443BX PCI/AGP controller (PAC) and 82371EB PCI/ISA IDE Xcelerator (PIIX4E) device).
- **CPU** : SEC cartridge, placed in slot 1: Celeron up to 400/66 MHz, Pentium II up to 450/100 MHz, Pentium III up to 550/100 MHz
- **Expansion Sockets** : 2 PCI slots, 1 shared ISA/PCI slot.
- **Form Factor** : ATX Form Factor.
- **RAM** : Two 168 pin DIMM sockets supporting up to 512 MB of SDRAM memory.
- **Video** : ATI 3D Rage Pro Turbo AGP 2x 8MB SDRAM

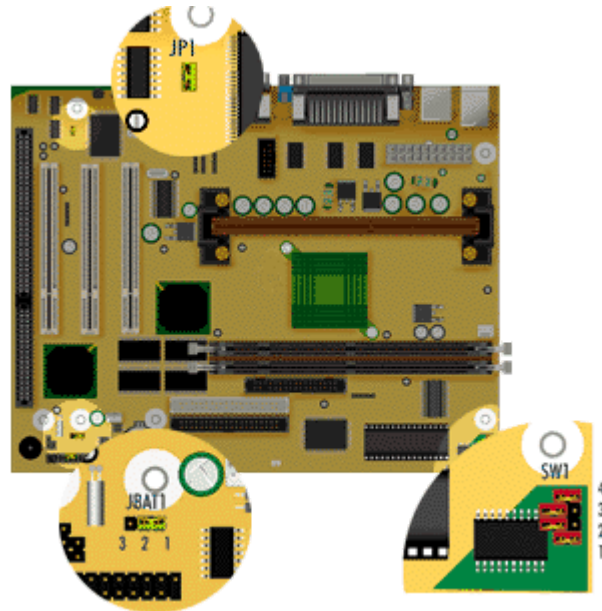
## Upgrade Options

- **CPU** :
  - This motherboard has a Slot 1 for Intel(R) Pentium(R) II/ III processor, which can support the following CPUs: Celeron up to 400/66 MHz, Pentium II up to 450/100 MHz, Pentium III up to 550/100 MHz
  - The CPU speed jumpers SW1 (found in the lower right corner of the motherboard) will have to be set according to the table in the Jumpers section.
- **RAM** :
  - The motherboard has two DIMM sockets for memory modules. These sockets accept only 168-pin DIMM modules. The connectors of the memory sockets are gold-plated. In order to avoid oxidation,

also the DIMM modules used must have gold-plated connectors. Before installing a new memory module, please verify that you have at least one free DIMM socket available.

- o Only unbuffered 3.3 V SDRAM may be used.
- o Single- or double-sided DIMMs may be used.
- o SDRAM DIMMs may be up to 256 MB big.
- o Maximum memory size supported by the motherboard is 512 MB.
- o You can use Parity (×72) DIMMs or ECC (1-bit Error Code Correct) as the motherboard supports also memory checking.
- o If the front bus is set to 100 MHz, then memory must be consistent with PC100 SDRAM specifications.

## Jumpers



Processor		SW1 Settings			
66MHz	100 MHz	1	2	3	4
233	350	on	off	off	on
266	400	on	on	on	off
300	450	on	off	on	off
333	500	on	on	off	off
366	550	on	off	off	off
400	-	off	on	off	on

CMOS Clear/Keep (JBAT1)	
1-2	Keep current CMOS settings
2-3	Clear CMOS

Boot-Up Option (JP1)

ON	System Boot After Pwr Switch Pressed
OFF	System Boot On Mains Power On

<b>Enable/Disable Onboard VGA (JP2)</b>	
ON	Enable onboard VGA (default)
OFF	Disable onboard VGA

<b>Clear Password (JP14)</b>	
ON	Normal operation (default)
OFF	Clear Password