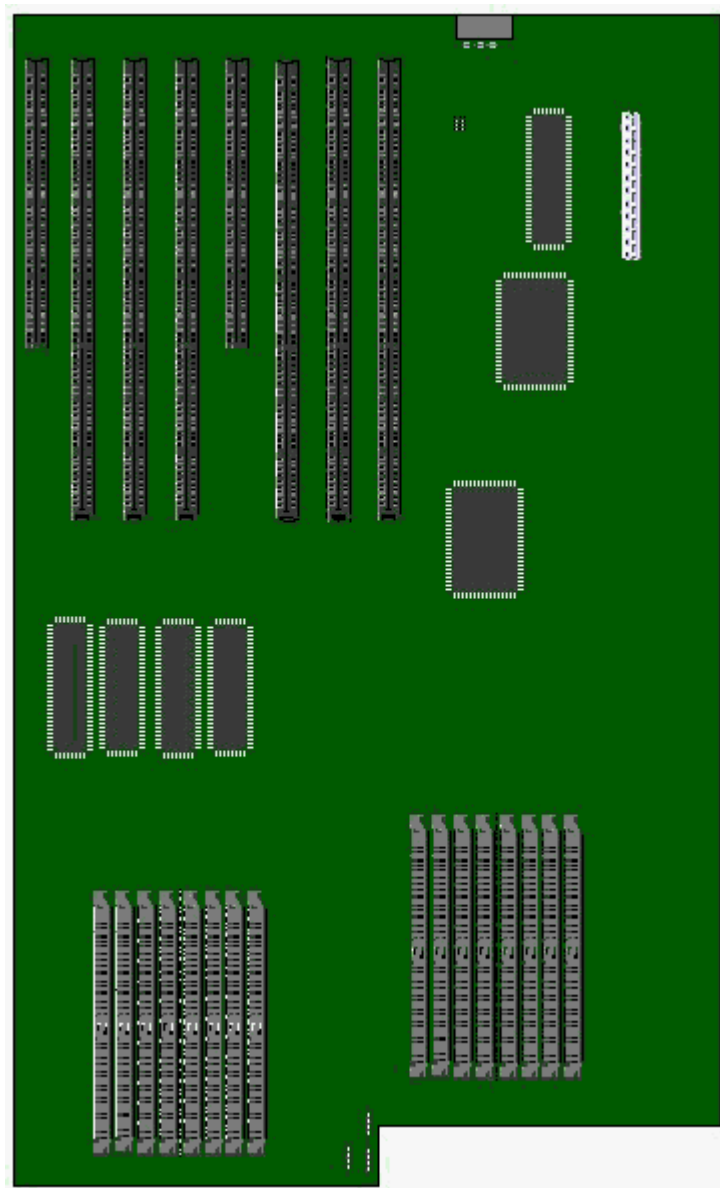
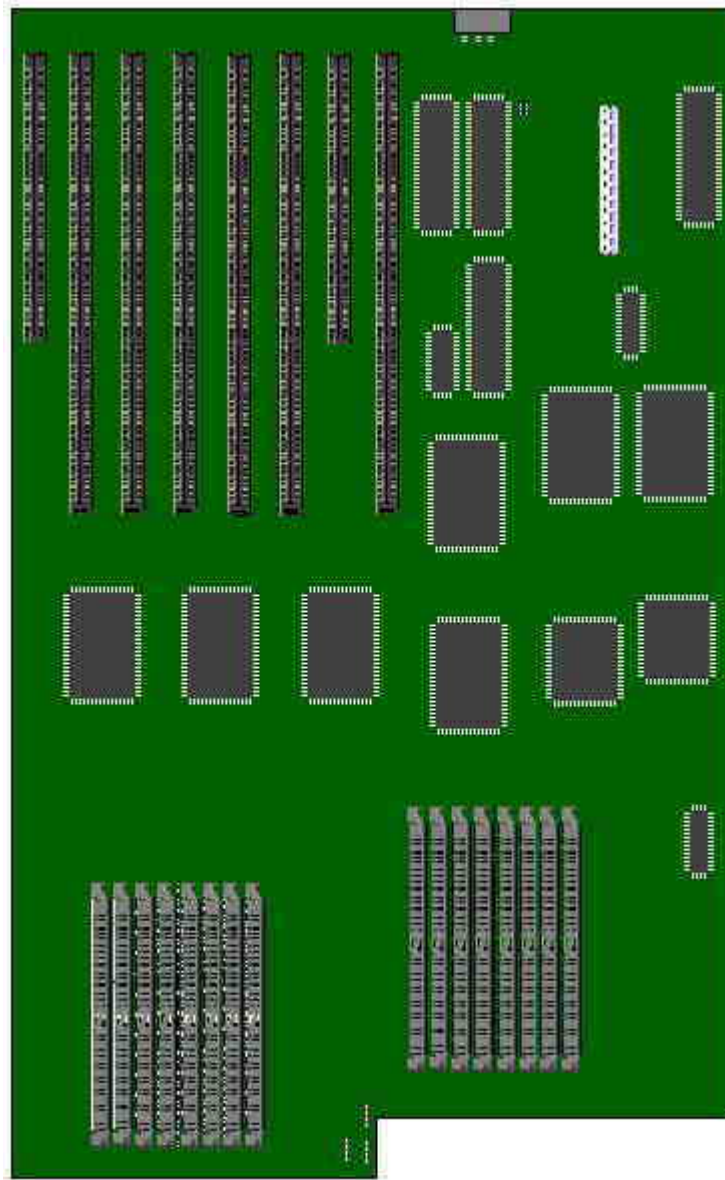


# Packard Bell 386 16/20 Supreme M/Board

Both versions of this mother board are shown below. The first motherboard is the new motherboard layout (386-16 & 386-20), and the second board is the old motherboard layout (386-16).





## Jumpers

Function	Jumper	Description
Display Type (JMP1)	1-2 2-3	Colour Monochrome
Coprocessor (JMP2 old version)	1-2 2-3	Disabled Enabled
Coprocessor (JMP2 new version)	1-2 3-4 5-6	80387 None 80287
EMPROM (JMP 3 new version)	1-2 2-3	256k 512k
Auxiliary IOCS16 (JMP 4 old version)	1-2 2-3	Enabled Disabled

## Upgrades

- **Battery** : Removable, located at J2.
- **Maths Co-Processor** : This system has two variations of motherboards: A. The old variation accepts only the 80287-10 Math Co-processor at location U12. B. The new variation will accept the 80287-10, 80387DX-16 or 80387DX-20 in the appropriate Co-processor socket. JMP2 must jump 1-2 for 80387 or 5-6 for 80287.
- **RAM** : 16MB maximum. Shadow BIOS and Shadow Video takes 128Kb off Extended Memory for each enabled shadow. No jumper setting required. Use 256l or 1MB SIMMS, 70ns.