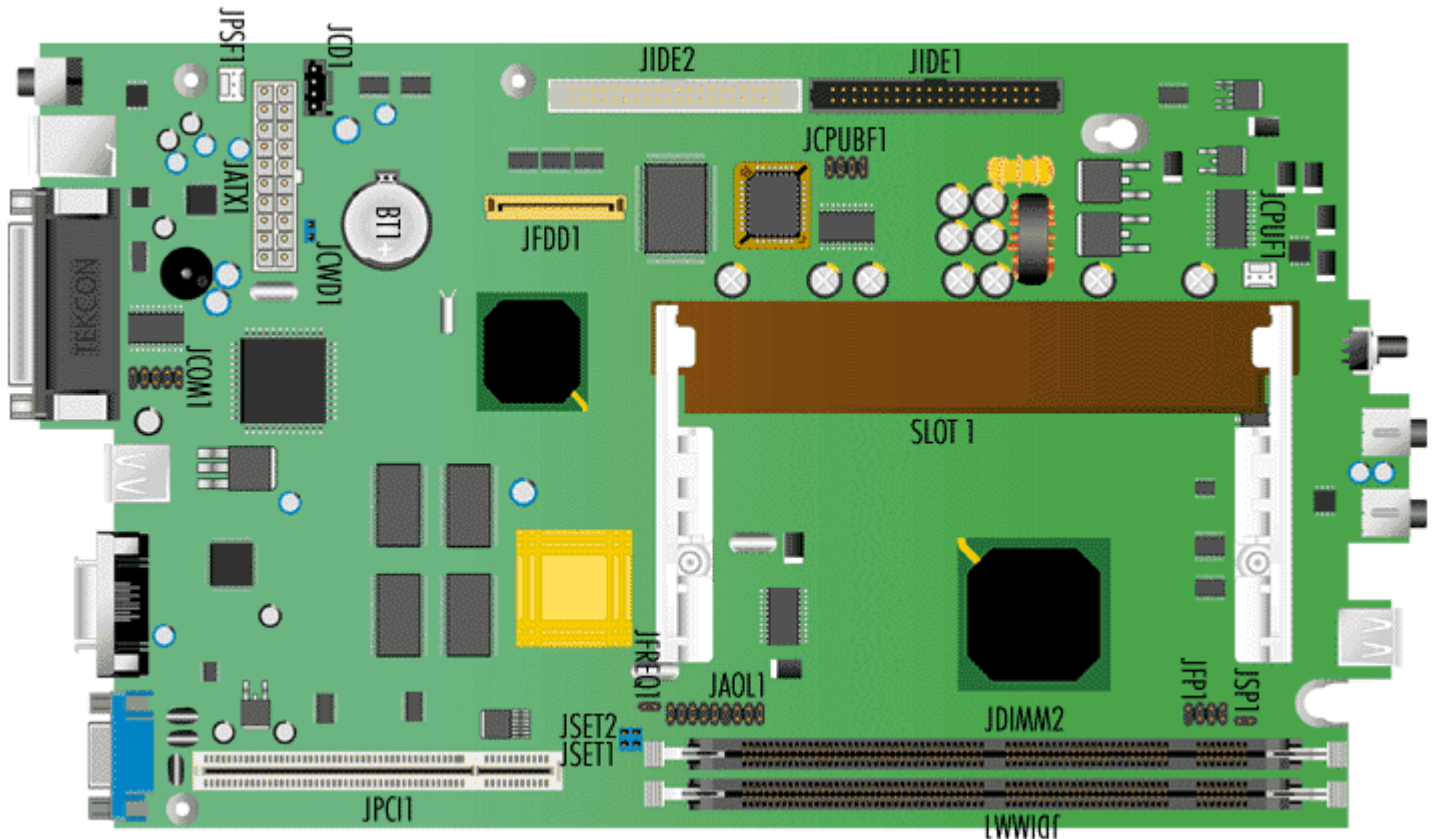


# Packard Bell Spirit M/Board



## Specification

- **Audio Controller:** YMF740C
- **BIOS:** Phoenix
- **Bus:** 100 MHz front side bus is supported.
- **Cache:** Integrated on the SEC cartridge.
- **Chassis:** Aloh@
- **Chipset:** Intel 82440BX PCI set (82443BX PCI/AGP controller (PAC) and 82371EB PCI/ISA IDE Xcelerator (PIIX4E) device)
- **CPU Support:** The motherboard supports the following processors, in a Single Edge Contact 2 cartridge placed in SLOT 1: Pentium III: 450/100, 500/100, 550/100 MHz including 512 KB cache on CPU PCB.
- **Expansion Slots:** Three 32-bit Master PCI Bus slots on PCI riser board.
- **Form Factor:** ATX Form Factor 24.4 x 20.6 cm (8.1" x 9.6")
- **On-Board peripherals:**
  - 1 floppy port supports 1 FDD with 720 KB, 1.25/1.44 MB, and 2.88 MB settings
  - 1 serial port (COM A)
  - 1 parallel port supports SPP/EPP/ECP mode
  - 2 USB ports (1 on the front panel and 1 on the back panel)
  - Line In & Line Out on back panel
  - Mic In & Headphone on front panel
  - 1 VGA port
  - 1 Digital VGA port
  - PS/2 Mouse and keyboard connectors
- **RAM :** Two 168-pin DIMM sockets supporting up to 512 MB of SDRAM memory.
- **Video :** S3 Savage 4 Pro

- Full AGP 4x and 2x, limited to 2x by 440BX chipset
- 2 to 32 MB frame buffer.
- 128-bit graphics engine enabling extensive 2D graphics support and acceleration.
- 3D graphics support including: 32-bit true colour rendering, full scene and sprite anti-aliasing, reflection mapping, texture morphing, shadows, procedural textures and atmospheric effects.
- Digital video and MPEG2 support.
- NTSC and PAL TV support.
- 24-bit digital interface for flat panel encoders, enabling digital flat panel monitor support.

## Upgrades

- **CPU** : Upgradable using Pentium III up to 550 MHz.
- **RAM** : Upgradable up to 512 MB using 3.3 V gold-plated SDRAM DIMMs. The Spirit motherboard only accepts 168-pin DIMM modules. Only gold-plated DIMMs may be used, as the sockets on the motherboard are also gold-plated, and oxidation must be prevented. Only use unbuffered PC100 3.3 V SDRAM. Single or double-sided DIMMs may be used. SDRAM DIMMs may be up to 256 MB big. Memory size and speed can vary between sockets. Parity (×72) DIMMs can be installed, ECC memory checking is supported.

## Jumpers & Connectors

### Motherboard Jumpers

Jumper	Configuration
JFREQ1 - Front bus speed	<b>Open</b> : 100 MHz (default) <b>Closed</b> : 66 MHz
JCWD1 - Clear Password	<b>Closed</b> : Keep Password (default) <b>Open</b> : Clear Password
JP1 - +5VSB Support Configuration	<b>Closed</b> : +5VSB supported (default) <b>Open</b> : +5VSB not supported

### Motherboard Connectors

Position	Name	Type
JFDD1	Floppy Drive connector	
JATX1	ATX Power supply connector	20 pin Keyed Connector
JIDE1	Primary IDE connector	40 (2x20) pin header
40 (2x20) pin header	Secondary IDE connector	Secondary IDE connector
JPCI1	PCI Riser Board connector	standard PCI expansion slot
JCPUBF1	Speed ratio	8 pin connector
JCD1	Audio CD connector	4 pin header
JPSF1	Power supply fan connector	3 pin header
BT1	CMOS Battery	
JCWD1	CMOS Clear jumper	2 pin jumper
JSET1		

JSET2		
JCOM1	Serial COM 1	10 pin dual row (1 key) shrouded header
JDIMM1, JDIMM2	Bank 1 & 2 DIMM sockets	
JSP1	Speaker connector	2 pin connector
JFP1	Front panel connector	Front panel connector
SLOT1	CPU socket	Slot 1
JAOL2	Alert on LAN	18 pin (-1) connector
JCPU F1	CPU Fan connector	3 pin header
3 pin header	System speed configuration jumper	2 pin jumper

## PCI Riser Board

Position	Name
PCI 1, 2, 3	PCI expansion slots
P1	TAD/Wake on Ring for modem
P2	+VSB for Add-on sound card
JP1	+5VSB support configuration jumper