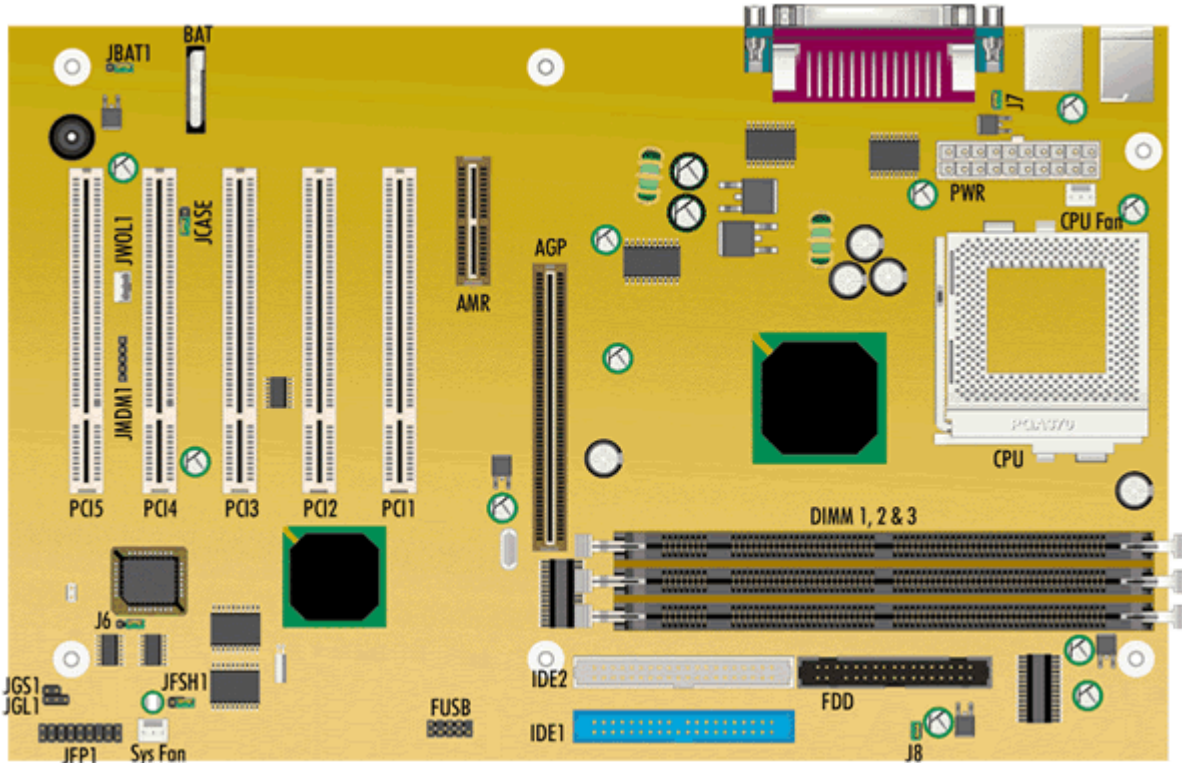


Packard Bell Saturn M/Board



Specification

- **BIOS** : Ami BIOS
- **Chipset** : VIA Apollo Pro133A
- **CPU Support** : Socket 370
 - Supports Intel PIII Coppermine FC-PGA (Flip-Chip Pin Grid Array) processor 600/100 - 850/100 MHz
 - Supports Intel PIII Coppermine FC-PGA (Flip-Chip Pin Grid Array) processor 600/133 - 1000/133 MHz
 - Note: above CPU's are only supported with the latest BIOS version.
 - 66/100/133 MHz Host bus speed processors are supported.
- **Expansion Slots** : 5 PCI extension slots, 1 Audio Modem Riser connector, 1 AGP connector
- **Form Factor** : ATX 30.4cm. x 19.2cm Form Factor
- **RAM** :
 - Supports 3 slots using three 168-pin unbuffered DIMM.
 - Supports single or double-sided DIMMS with gold-plated contacts at a clock speed of 66, 100 or 133 MHz.

CPU Bus Frequency	Memory Frequency Supported
66 MHz	66, 100 or 133 MHz
100 MHz	66, 100 or 133 MHz
133 MHz	100 or 133 MHz

- Supports a maximum memory size of: 768 (128-bit technology) or 384 MB (64-bit technology) registered DIMMs 1.5 GB unregistered DIMMS (256-bit technology)
- Supports 3.3 V SDRAM DIMMs
- ECC memory checking is supported

Jumpers

Jumper	Configuration
JBAT1 - Clear CMOS	1-2 : Normal operation (default) 2-3 : Clear current BIOS settings
JFSH1 - BIOS Write Protect	Open : Allows the flashing of the BIOS Close : Write-protection enabled
J6 - BIOS Mode Select	1-2 : Normal Mode. CMOS and NVRAM are only cleared if they failed the checksum test 2-3 : Hardware Config. BIOS Setup is put in extended configuration mode (a maintenance menu is available, in which you can select the Clear Password option). Open : Recovery. BIOS recovery from the floppy.
J7 - USB devices 1&2 power on function from S3 states	Open : Disabled. Closed : Enabled
J8 - USB devices 3&4 power on function from S3 states	Open : Disabled. Closed : Enabled

Note - There are 3 USB ports on the motherboard, all of which are active at the same time (thus no need for a USB selection jumper). Two of the USB ports (USB 1 & 2) are on the back panel, two USB headers are on the board (USB 3 & 4). Only one of these USB headers (3) is currently populated. The jumpers J7 and J8 are used to activate Wake up from S3 state (one of the ACPI sleep modes) via a USB device (keyboard, mouse...) connected to one of the USB ports/headers.