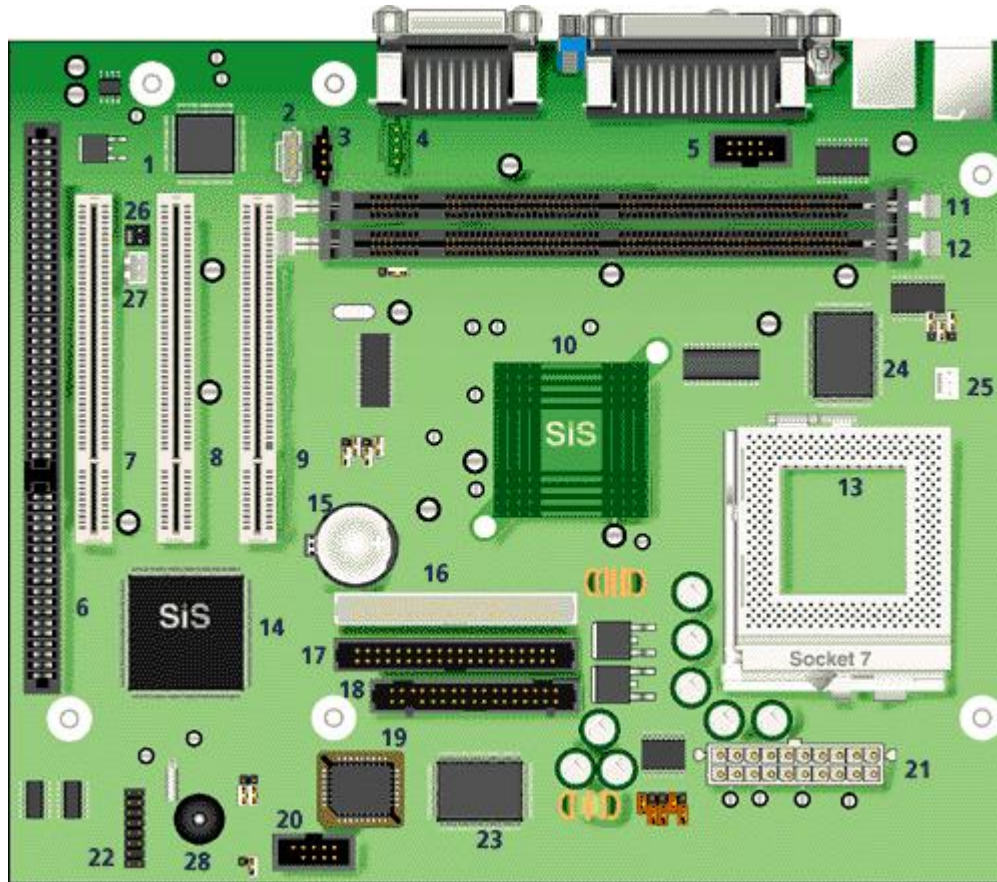


Packard Bell Miami M/Board



Item	Description	Item	Description
1	Solo 1 ESS sound chip	2	Aux In
3	CD-ROM In	4	Modem In
5	COM2 header	6	ISA slot (shared)
7	PCI 3 Slot (shared)	8	PCI 2 slot
9	PCI 1 slot	10	SIS 530
11	Bank 1 DIMM	12	Bank 0 DIMM
13	CPU Socket 7	14	SIS 5595 PCI/ISA bridge
15	Lithium battery	16	Secondary IDE, up to 2 IDE devices
17	Primary IDE, up to 2 IDE devices	18	Floppy connector, 34 pin FDD connector
19	Flash BIOS	20	Front USB header
21	Main Power input	22	Front Panel connector
23	I/O controller	24	Cache
25	CPU FAN header	26	Ring-In
27	WOL header		

Specification

- **Audio** : ESS Solo-1.
- **BIOS** : AMI BIOS.
- **Cache** : 512KB write back direct mapped pipeline burstcache.

- **Chipset** : SIS 530 & 5595 chipset.
- **CPU Support** : Socket 7 processors: Intel Pentium P55C, Cyrix MII, AMD K6-2.
- **Expansion Slots** : 2 PCI slots and 1 shared ISA/PCI slot.
- **Form Factor** : MicroATX
- **RAM** : 2 DIMM sockets supporting single- or double-sided SDRAM up to a maximum of 512 MB.
- **Video** : Integrated in chipset.

Upgrade Options

- **CPU** : CPU upgradable up to 450 MHz.
- **RAM** :
 - RAM upgradable up to 512 MB using 66 or 100 MHz SDRAM DIMMs.
 - The Miami motherboard only accepts 168-pin DIMM modules. Only gold-plated DIMMs may be used, as the sockets on the motherboard are also gold-plated, and oxidation must be prevented.
 - Use 60 ns, 3.3 V CAS Latency 2, single- or double-sided DIMMs only. Parity is not supported.

Jumpers

Jumper	Function	Configuration
JP18	CMOS/Password Clear	Open - Normal Operation Closed - Clear CMOS Data

Onboard VGA (JVSB1)

Pins	Function
OFF	Enable onboard video
ON	Disable onboard video

Front/Back USB Port Select Jumper Block (JP10)

USB Port	JP10 Settings
Front	1-2, 4-5
Back	2-3, 5-6

CPU/DRAM Clock Selection

CPU/DRAM Clock (MHz)	JP5	JP6	JP7	JP8
66	OFF	ON	ON	ON
75	OFF	ON	ON	OFF
83	OFF	ON	OFF	ON
90	ON	ON	ON	ON
95	OFF	ON	OFF	OFF

100	OFF	OFF	ON	ON
-----	-----	-----	----	----

CPU/Bus Speed Ratio Select

Intel CPU/Bus	JP2	JP3	JP4
X1.5/X3.5	OFF	OFF	OFF
X2.0/X6.0	ON	OFF	OFF
X2.5	ON	ON	OFF
X3.0	OFF	ON	OFF
X4.0	ON	ON	ON
X4.5	ON	OFF	ON
X5.0	OFF	ON	ON
X5.5	OFF	OFF	ON

CPU & I/O voltage

Voltage	JP11	JP12	JP13	JP14	JP15
1.8v	OFF	ON	OFF	ON	ON
2.1v	ON	OFF	OFF	OFF	OFF
AMD K6-2: 2.2v	OFF	ON	OFF	OFF	OFF
Intel Pentium: 2.8v	OFF	OFF	OFF	ON	OFF
Cyrix M2: 2.9v	ON	OFF	OFF	ON	OFF
3.1v	ON	ON	OFF	ON	OFF
3.2v	OFF	OFF	ON	ON	OFF