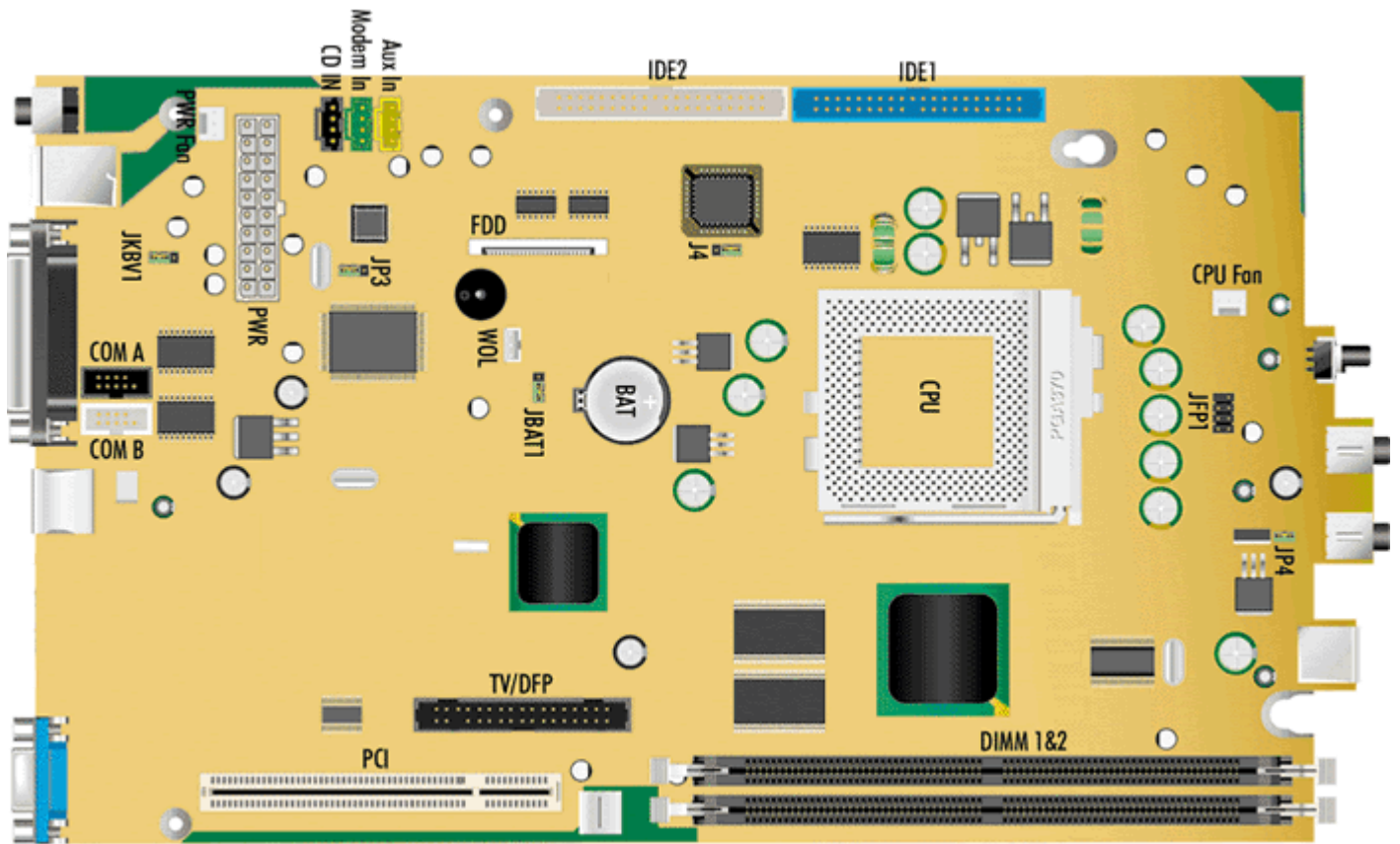


# Packard Bell Kourou 2 M/Board



## Specification

- **Audio:** SigmaTel STAC9700 Codec
- **Bios :** AMI BIOS
- **Chipset :** The Intel 810E chipset consists of the Intel 82810E Graphic Memory Controller Hub (GMCH) and the 82801 I/O Controller Hub (ICH).
- **CPU Support :** Socket 370. Supports -
  - Supports 66MHz FSB Intel Celeron PPGA processor at 766 MHz maximum.
  - Supports 100MHz FSB Intel Celeron FC-PGA processor at 900 MHz maximum.
  - Supports 100MHz FSB Intel PIII Coppermine FC-PGA processor at 1.1 GHz maximum.
  - Supports 133MHz FSB Intel PIII Coppermine FC-PGA processor at 1.0 GHz maximum.
- **Expansion Slots :** Two 32-bit Master PCI Bus slots are available on the PCI Riser Board. 1 Audio Modem Riser slot
- **Form Factor :** Specific (29.5 x 17.7cm)
- **RAM :** Two memory banks using two 168-pin unbuffered DIMMs. Supports a maximum memory size of 256 MB (64-bit technology) and 512 MB (128-bit technology) SDRAM in one or two DIMM sockets. Supports 3.3 V SDRAM DIMMs
- **Video :** Integrated in Chipset

## Jumpers



<b>Jumper</b>	<b>Configuration</b>
JP4 - BIOS Recovery	<b>1-2</b> : Normal operation (default) <b>2-3</b> : Safe Mode
JBAT1 - Clear CMOS	<b>1-2</b> : Normal (default) <b>2-3</b> : Clear CMOS
JKBV1 - Keyboard Wake	<b>1-2</b> : Keyboard wake up <b>2-3</b> : KB wake up disabled (default)
JP4 - STR enable/disable	<b>Close</b> : STR enabled (default) <b>Open</b> : STR disabled
JP3 - Onboard audio	<b>1-2</b> : Enabled (default) <b>2-3</b> : Disabled