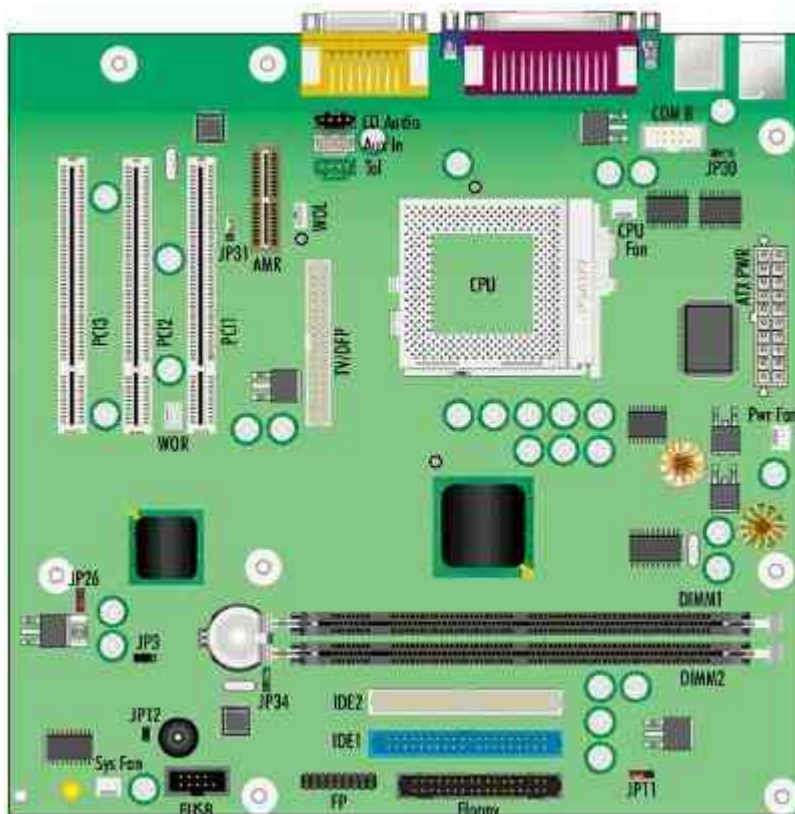


Packard Bell Houston 4 M/Board



Specification

- **Audio** : SigmaTel STAC9700 Codec
- **BIOS** : Ami
- **Chipset** : Intel 810E chipset consisting of the Intel 82810E Graphic Memory Controller Hub (GMCH) and the 82801 I/O Controller Hub (ICH).
- **CPU Support** : Socket 370
 - Supports Intel Celeron FC-PGA (Flip-Chip Pin Grid Array) processor 366/66 to 766/66 MHz.
 - Supports Intel Celeron Coppermine FC-PGA processor 800/100 to 850/100 MHz.
 - Supports Intel PIII Coppermine FC-PGA processor 500/100 to 850/100 MHz.
 - Supports Intel PIII Coppermine FC-PGA processor 533/133 to 1000/133 MHz.
 - 66/100/133 MHz Host bus speed processors are supported.
 - Note: above CPU's are only supported with the latest BIOS version.
- **Form Factor** : ATX 24.4×21.0 cm Form Factor
- **RAM** :
 - Supports 2 memory banks using two 168-pin unbuffered DIMM.
 - Supports single or double sided DIMMS with gold-plated contacts at a clock speed of 100 MHz.
 - Supports a maximum memory size of 512 MB (128-bit technology) or 256 MB (64-bit technology) for SDRAM.
 - Supports 3.3 V SDRAM DIMMs.
 - ECC memory checking is not supported
- **Video** : Integrated on motherboard

Jumpers

Jumper	Configuration
JP3 - Clear CMOS Settings	1-2 : Normal operation (default) 2-3 : Clear current CMOS settings.
JP11 - Suspend to RAM	Open : Disable Suspend to RAM (default) Close : Enable Suspend to RAM
JP26 - Set Flash Memory	1-2 : Normal (default) 2-3 : Restore Settings Open : Recovery
JP30 - USB Keyboard Wakeup	1-2 : USB keyboard wakeup disabled (default) 2-3 : USB keyboard wakeup enabled
JP31 - Audio CODEC selection	1-2 : Primary 2-3 : Disable CODEC Open : Secondary
JP34 - USB device wake up	1-2 : Wake up disabled 2-3 : Wake up enabled (default)

Note about the USB features: There is support for 4 USB ports on the motherboard, all of which are active at the same time (thus no need for a USB selection jumper). The jumper JP34 is used to activate Wake up from S3 state (one of the ACPI sleep modes).