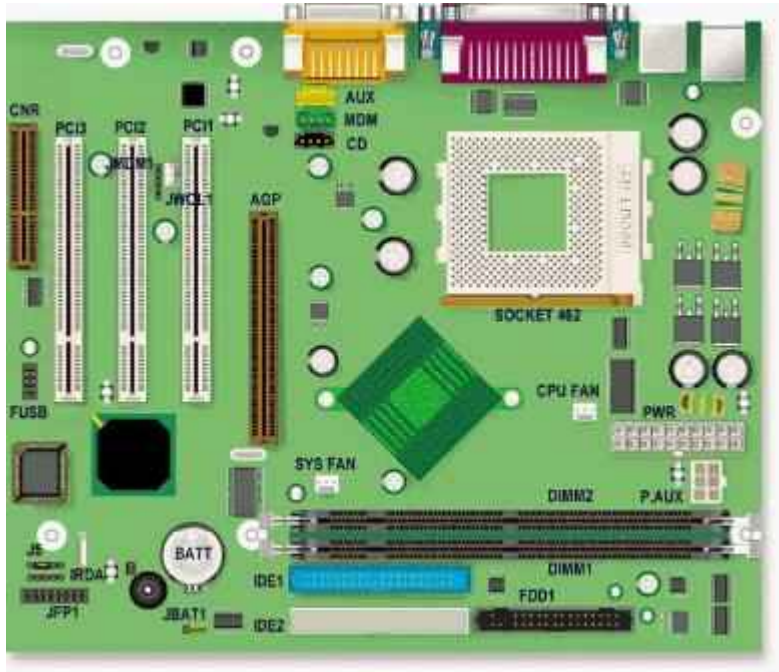


Packard Bell Florida M/Board



The Florida motherboard is almost identical to the Halley motherboard. Both are described as MSI-6340 by the manufacturer MSI. The difference is in the chipsets: the Florida uses the VIA Apollo KT133 chipset, and the Halley has the VIA Apollo KM133 chipset. This chipset has the S3 ProSavage 4 video chipset integrated, giving the Halley integrated video as well as an AGP-port for AGP video-cards. The Florida motherboard only has the AGP-port and no integrated video.

Specification

- **Audio:** Integrated on the VIA Technologies' VT1611A 18-audio audio codec
- **Bios:** AMI
- **Chipset:** VIA Apollo KT133 (VT8363 552 BGA system controller, VT82C686A PCI to ISA bridge)
- **CPU Support :**
 - Socket 462 for AMD PGA Duron/Athlon processor.
 - 100 MHz Host bus speed (uses dual clocking to obtain 200 MHz FSB)
 - Supports 200 MHz FSB Duron CPU at 850 MHz maximum
 - Supports 200 MHz FSB Athlon CPU at 1100 MHz maximum
 - Note: above CPU's are only supported with the latest BIOS version.
- **Form Factor :** ATX 24.4 cm. × 20.0 cm Form Factor
- **RAM :**
 - 4 memory banks (2 slots) using three 168-pin unbuffered DIMM.
 - Single or double sided DIMMS with gold-plated contacts with clock specifications of 66, 100 or 133 MHz.

CPU Bus Frequency	Memory Frequency Supported
100 MHz	66, 100 or 133 MHz
200 MHz	100 or 133 MHz

- Supports a maximum memory size of 1 GB
- 512 (128-bit technology) or 256 MB (64-bit technology) registered DIMMs

- 1 GB unregistered DIMMS (256-bit technology)
- 3.3 V SDRAM DIMMs.
- ECC memory checking is not supported

Jumpers

Jumper	Configuration
JBAT1 - Clear CMOS jumper	1-2: Normal operation (default) 2-3: Clear current BIOS
J5 - Bios Configuration Access	1-2: Normal operation (default) 2-3: Access BIOS maintenance panel None: BIOS Recovery