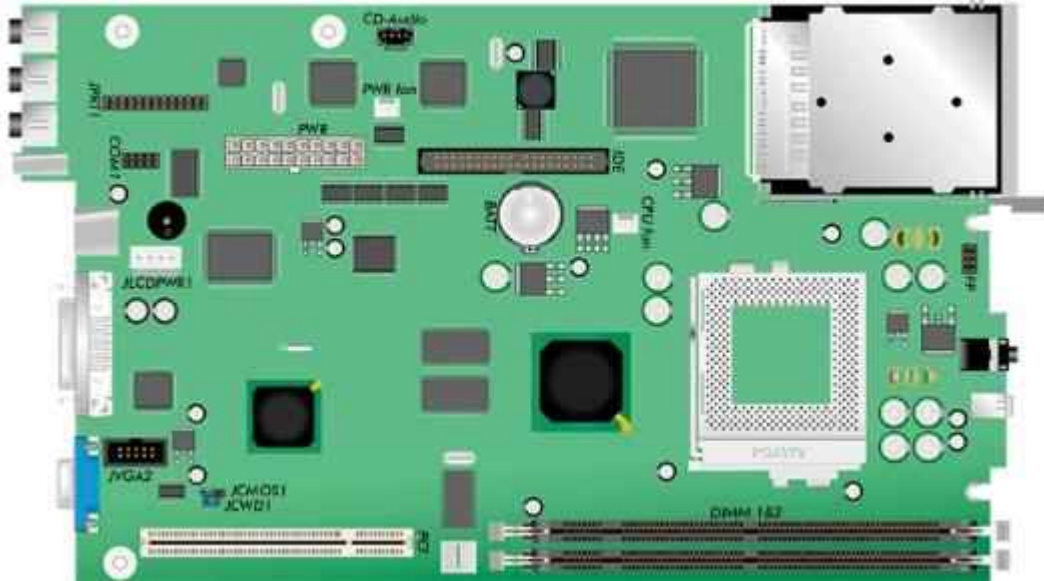


Packard Bell Aur@ M/Board



Specification

- **Audio:** Yamaha YMF754-R
- **Bios:** Phoenix
- **Chipset :** Intel 810E chipset consisting of the Intel 82810E Graphic Memory Controller Hub (GMCH) and the 82801 I/O Controller Hub (ICH).
- **CPU Support :** Socket 370
 - Supports Intel Celeron FC-PGA (Flip-Chip Pin Grid Array) processor 533/66 to 700/66 MHz and faster.
 - Supports Intel PIII Coppermine FC-PGA (Flip-Chip Pin Grid Array) - 600/100 to 850/100 MHz and faster, 600/133 to 933/133 MHz and faster
 - Warning: not all the above processors have been qualified. Check their current status with the Hardware Engineering dpt.
 - 66/100/133 MHz Host bus speed processors are supported.
- **Form Factor :** Specific 31 x 18 cm Form Factor
- **RAM :**
 - Supports 2 memory banks using two 168-pin unbuffered DIMM.
 - Supports a maximum memory size of 512 MB (128-bit technology) or 256 MB (64-bit technology) for SDRAM.
 - Supports 3.3 V SDRAM DIMMs.
 - ECC memory checking is not supported
- **Video :** Integrated onboard. Note - Aur@ motherboard provides two different video outputs: one analog CRT output, and one proprietary digital output for the Slimview 535 LCD monitor.

Jumpers

Jumper	Configuration
JCMOS1 - Clear CMOS	1-2: Normal operation (default) 2-3: Clear current BIOS default settings

JCWD1 - Clear Password	Open: Clear password Close: Normal (default)
------------------------	---