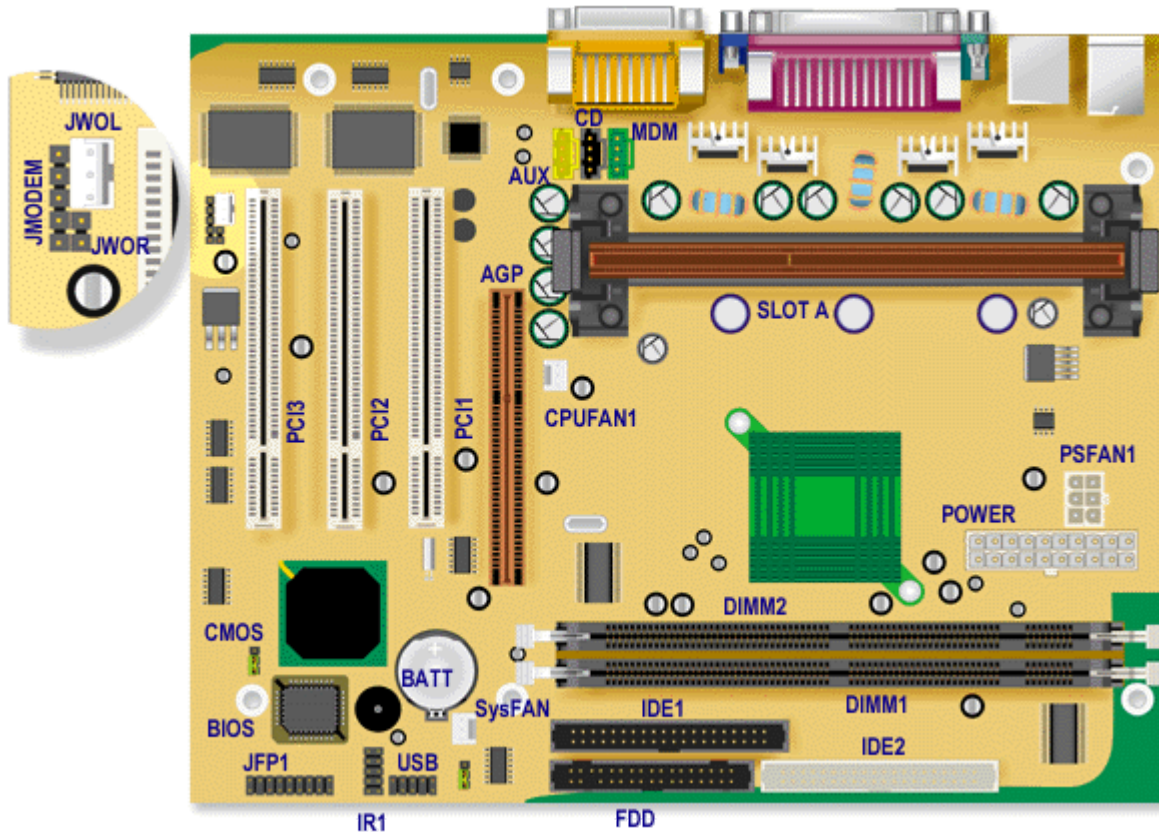


Packard Bell Athena M/Board



Specification

- **Audio** : Creative ES1373 (optional)
- **Battery** : 3.3V, 100mAH lithium battery, in socket.
- **BIOS** : MSI system Bios with AMI core.
- **Chipset** : AMD Irongate chipset (Northbridge). AMD 756 (Viper) chipset (Southbridge).
- **CPU Support** : Slot A for AMD Athlon processor. Support 500MHz, 550MHz, 600MHz or higher processor.
- **Expansion Slots** : 3 PCI slots.
- **Form Factor** : μ ATX
- **RAM** : Two 168 pin DIMM sockets supporting single or double sided 3.3 V DIMMs. Up to 512 MB of 60 ns CAS Latency 2 SDRAMs. 100MHz SDRAMs are supported. No ECC support.
- **Video** : 2 speed AGP graphics slot

Upgrade Options

- **CPU** : Upgradable using AMD Athlon processor, 500MHz, 550MHz, 600MHz or higher
- **RAM** : Two 168 pin DIMM sockets supporting up to 512MB memory. Use 60ns 3.3V CAS Latency 2, single or double sided 8MB,16MB,32MB,64MB,128MB, and 256MB 64 or 72 bit gold DIMMs with gold plated contacts. Buffered, 5V, or 2-clock SDRAM DIMMs cannot be used.

Jumpers

Jumper	Configuration
JBAT1 - CMOS	1-2 : Normal operation (default) 2-3 : Clear current BIOS settings.