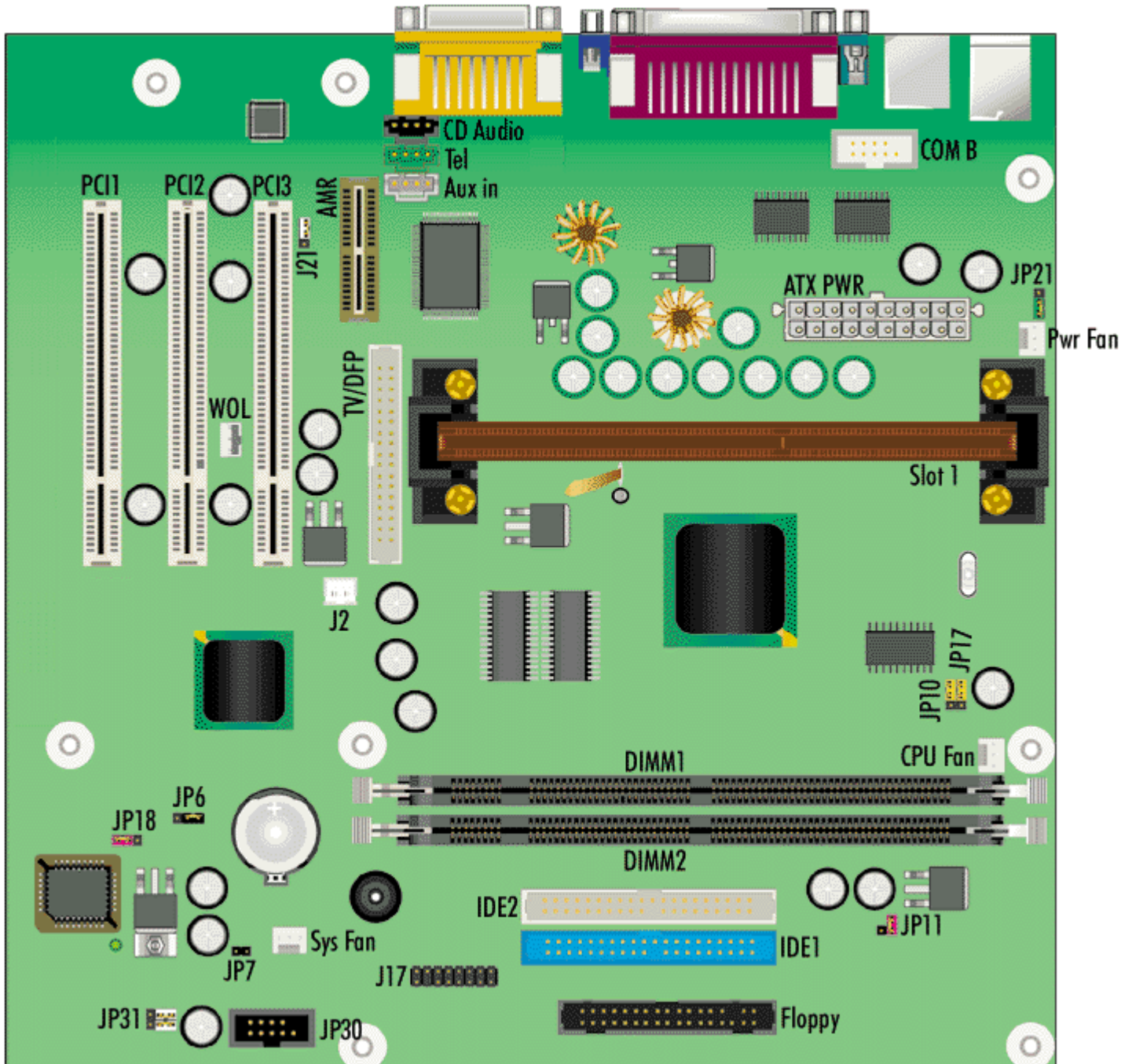


Packard Bell Apollo M/Board



Specification

- **BIOS** : Ami BIOS.
- **Bus** : 133 MHz front side bus is supported.
- **Cache** : Integrated on the SEC cartridge.
- **Chipset** : Intel 810E chipset (Intel 82810E Graphic Memory Controller Hub (GMCH) and the 82801 I/O Controller Hub (ICH))
- **CPU Support** : The motherboard supports the following processors, either in a SEC (Single Edge Contact) or SEC2 cartridge, and placed in SLOT 1:
 - Pentium III: 450/100, 500/100, 550/100, and 600/100 including cache on CPU PCB.

- Pentium III Coppermine: 533/133, 600/133 and above including cache on Die.
- Pentium II: 233/66, 266/66, 300/66, 333/66, 350/100, 400/100 450/100 MHz including cache on CPU PCB.
- **Expansion Slots** : Three 32-bit Master PCI Bus slots.
- **Form Factor** : ATX
- **RAM** :
 - Supports 2 memory banks using two 168-pin unbuffered DIMM.
 - Supports single or double sided DIMMS with gold-plated contacts at a clock speed of 100 MHz.
 - Supports a maximum memory size of 512 MB (128-bit technology) or 256 MB (64-bit technology) for SDRAM.
 - Supports 3.3 V SDRAM DIMMs.
 - ECC memory checking is not supported.
 - Suspend To RAM support.
- **Video** : Integrated in chipset

Jumpers

Jumper	Configuration
JP6 - Clear BIOS Settings	1-2 : Normal operation (default) 2-3 : Clear current BIOS settings.
JP18 - Flash Memory	1-2 : Normal operation (default) 2-3 : Restores safe values + automatically loads the BIOS setup on boot. OPEN : Flash and recover a corrupted BIOS
JP11 - Suspend to RAM	OPEN : Disable Suspend to RAM (default) CLOSE : Enable Suspend to RAM
J21 - USB Keyboard Wake up	1-2 : USB keyboard wake up enabled 2-3 : USB keyboard wake up disabled
JP21 - Audio CODEC	1-2 : Primary 2-3 : Disabled (default) OPEN : Secondary
JP31 - USB	1-3, 2-4 : Front USB enabled, top-rear USB disabled (default) 1-3, 2-4 : Front USB disabled, top-ear USB enabled

JP10 & JP17 - 2×3-pin jumpers to set bus speed

Setting	JP10	JP17
Auto	1-2	1-2
66MHz	2-3	2-3
100MHz	OPEN	2-3
133MHz	OPEN	OPEN