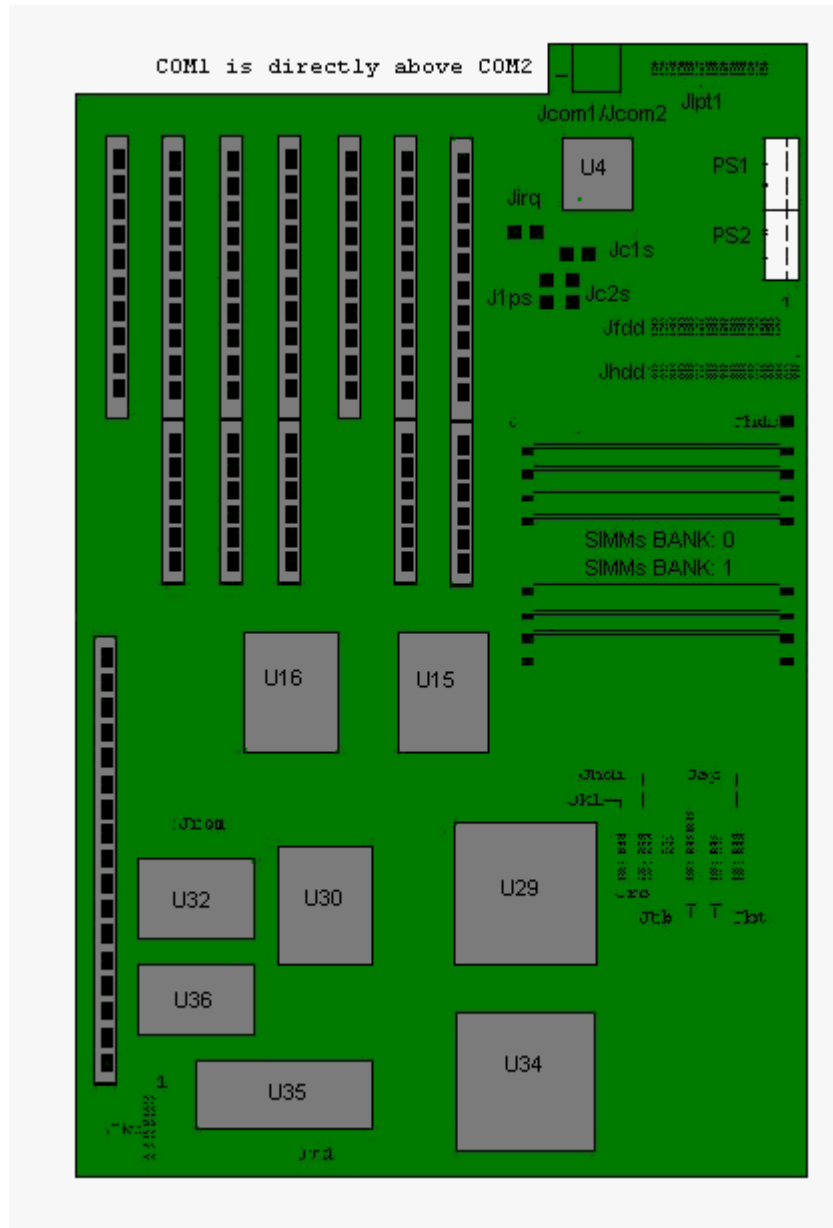


# Packard Bell 386 25/33 M/Board



## Specification

- **Battery** : Tadiran 3.6V Lithium connected at location Jbt.
- **BIOS** : 2 X 32K Phoenix BIOS 1.01.1817. To access setup, Press Ctrl-Alt-S during post.
- **Bus Architecture** : ISA based system bus
- **Cache** : N/A
- **CPU** : 80C386DX-25 or MHz 80C386DX-33 MHz. Turbo Switch Switchable, Off = 8 MHz, Green = 25/33 MHz.
- **Interfaces** :
  - 1 DB-25 Parallel Port
  - 2 DB-9 Serial ports
  - 1 Ext. VGA Conn 15 pin on expansion slot 1
- **RAM** : 2MB standard Maximum on Motherboard 32 MB
- **Speaker** : On-board diaphragm

- **Video** : 16-bit video adapter on expansion slot Capable of 1024 X 768
- **Video RAM** : 512K

## Jumpers

Function	Jumper	Description
Jc1s (COM 1)	1-2 OPEN	Enabled Disabled
Jc2s (COM 2)	1-2 OPEN	Enabled Disabled
Jlps (LPT PORT)	1-2 2-3	Select LPT1 Select LPT2
Jlrq (LPT INT)	1-2 2-3	Select LPT1 Select LPT2
Jfdc (FDC)	1-2 OPENED	Enabled Disabled
Jhdc (HDC)	1-2 OPENED	Enabled Disabled
Jvd (DISPLAY)	1-2 2-3	Monochrome Colour
Jpip (PIPELINE)	1-2 OPENED	N/A Non-pipeline mode
Jrom	1-2 OPEN	512Kb Rom size 256Kb Rom size

## Upgrades

- **Battery** : Tadiran 3.6V Lithium connected at location Jbt.
- **Maths Co-Processor** : This system will support the Intel 80387DX math co-processor and the Weitek WTL3167 math co-processor. The co-processor is installed at location U34. The speed of the chip must match the speed of the system. For example, 80387DX-33 for a 33MHz system.
- **RAM** :
  - 2MB standard Maximum on Motherboard 32 MB
  - SHADOW BIOS Enabled DOES NOT affect Extended Memory.
  - No jumper setting required.
  - Recommended SIMM speed is 80ns.
  - The Users Manual Shows a configuration with the 256K SIMMs in bank 0 and the 1MB SIMMs in bank 1. This configuration will work but may cause intermittent memory situations.