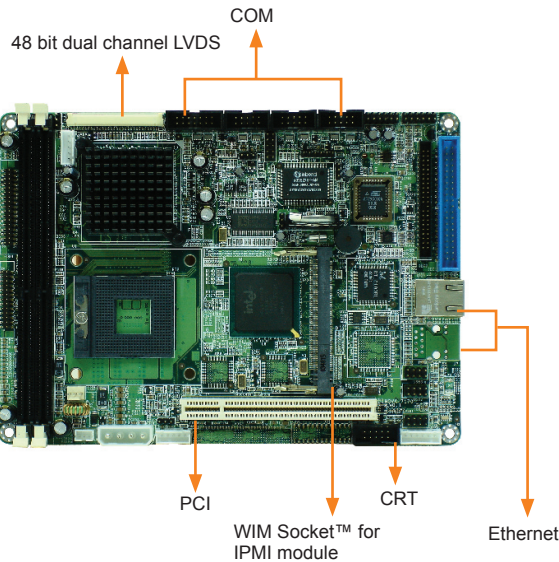


# NOVA-7171

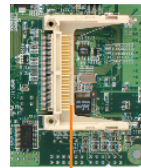
5.25" Intel Pentium M / Celeron M CPU with LCD / CRT VGA, LAN, USB2.0, IPMI Socket, Audio



Long Term Supports

Coming Soon

Rear side



CF II

Dual Display

Gigabit Ethernet  
HI-SPEED CERTIFIED USB



Tech Talk

## Feature

- Intel Pentium M / Celeron M CPU support up to FSB 533 MHz
- CRT/LCD VGA integrated in i852GME, support 48-bit LVDS
- Support independent dual display
- 2x DDR 266/333 support up to 2GB
- Support IPMI function
- CFII, Dual LAN, USB2.0, Multi-COM, Audio integrated

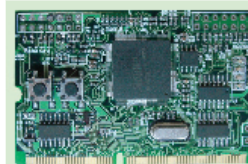
## Specifications

CPU	Socket 479 base support Intel Pentium M CPU up to 400MHz FSB On board ULV Intel Celeron M 600MHz with 512KB L2 Cache (NOVA-7171E2-600)
System Chipset	Intel 852GME + ICH4
System Memory	2x DDR266/333 SDRAM support up to 2GB ECC support
Display	- Display controller Intel GMCH Integrated Graphics controller Integrated AGP 4X 2D/3D engine - One VGA port for CRT monitor 1600x1200@8bpp ; 1280X1024@16bpp - DF 14-30F support 48 bit dual channel LVDS TFT LCD - Second 48-bit LVDS Port (Optional) - DVI interface (Optional) - Dual independent displays - Shared system memory up to 32MB (DVMT)
Ethernet	One Intel 82551QM 10/100Mbps
SSD	1x Compact Flash™ Type II Socket
I/O	2 x IDE port 1 x FDD port 1 x Parallel port (Supports SPP/EPP/ECP mode) 1 x PS2 Keyboard/Mouse support 3 x RS-232 Serial port 1 x RS-232/422/485 selectable 6 x USB 2.0 port 1 x IrDA by pin header (SIR mode)
Audio	AC'97 CODEC
Digital I/O	4 inputs / 4 outputs
WDT	Software programmable support 1 ~ 255 sec system reset
Expansion slot	1x PCI slot and 1x IPMI Socket
Hardware Monitoring	CPU voltage / Temperature / FAN speed monitor
Power control function	Meets ACPI 1.1 specification
Operation Temperature	0 ~ 60 °C
Relative Humidity	5 ~95%, non-condensing

## IEI Option

- **WIM-HT68-01** Wellsyn IPMI module Hitachi H2168 BMC
- **CF-518** High Performance Pentium-M CPU Cooler

page 5-5



WIM-HT68-01

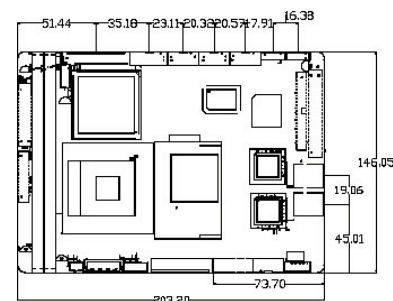


NOVA-7171 provides IPMI function, support 1xCPU FAN, voltage and temperature recovery capabilities, D I/O logging and alerting, identification of failed hardware.

## IPMI Main Features

- IPMI modular design can easily upgrade your system.
- Monitor your system health (fan/ temperature/ voltage/ processor/ disk/ device ) with or without OS live.
- Remote control your system in emergency or requirement, like: power on/off, warm reset, reboot, power cycle ... etc.
- Wide range applications including server, KVM, ATM and industrial highly reliable product application.
- IPMI gives system managers access to platform management information and control features, allowing more accurate predictions of hardware failures, diagnostic of hardware problems and the initiation of recovery actions
- Eliminate extra maintenance cost
- IPMI 2.0 compliant (IPMI over LAN, Serial Port and Modem)
- Emergency Management Port by COM & LAN
- Shares LAN controller with mainboard, and uses out-of-band bandwidth.
- Event Log information
- BIOS event - Hardware Monitor Event - System Event
- Text Console Redirection
- POST - BIOS Setup - DOS Operation

## Dimensions



## Ordering Information

### NOVA-7171E-R10

5.25" Socket 479 Intel Pentium M 533MHz FSB with LCD/CRT VGA, LAN, USB2.0, IPMI Socket, Audio

### NOVA-7171E-600-R10

5.25" ULV Intel Celeron M CPU with LCD / CRT VGA, LAN, USB 2.0, IPMI socket, Audio