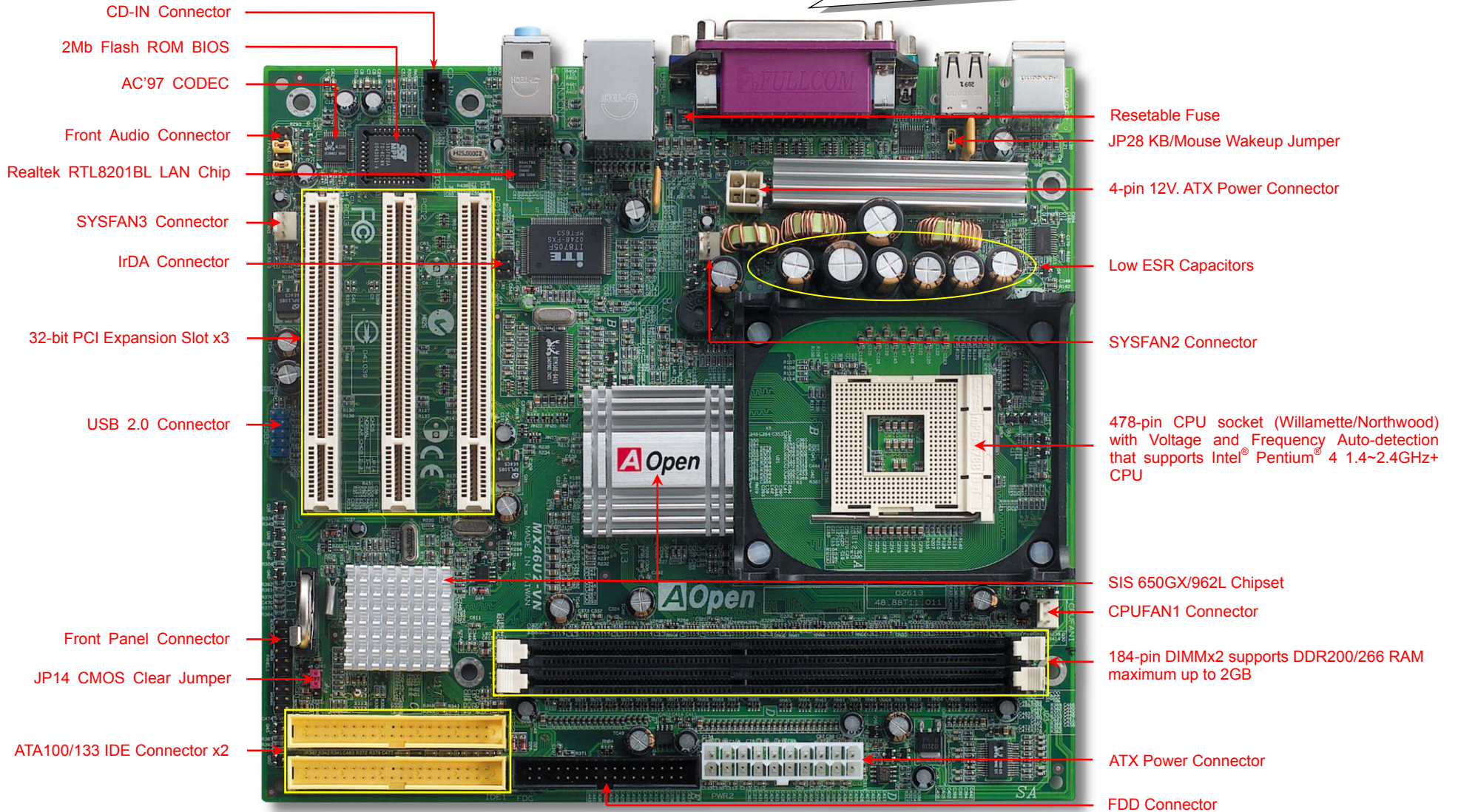
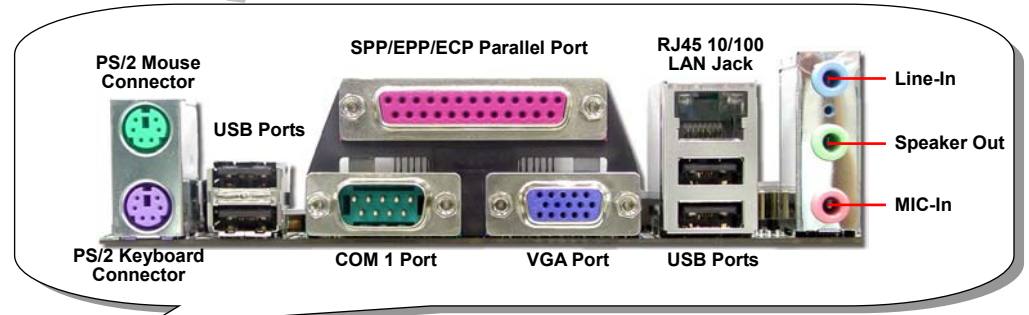


AOpen reserves the right to revise all the specifications and information contained in this documentation which is subject to change without notice.

# MX46U2-VN

# Easy Installation Guide





# Before You Start



Everything you need to boot this motherboard is included in this Easy Installation Guide. For more information, a complete **Online User's Manual** can be found in the **Bonus Pack CD**. Thanks for the help of saving our earth.

# Accessory Checklist

- ✓ **Motherboard x1**
- ✓ **Easy Installation Guide x1**
- ✓ **80-wire IDE Cable x1**
- ✓ **Floppy Disk Drive Cable x1**
- ✓ **Registration Card x1**
- ✓ **Bonus Pack CD x1**



PART NO: 49.88T01.E01

DOC. NO: MX46U2VN-EG-E0303A

## 1. JP14 Clear CMOS

You can clear CMOS to restore system default setting. To clear the CMOS, follow the procedure below.

1. Turn off the system and unplug the AC power.
2. Remove ATX power cable from connector PWR2.
3. Locate JP14 and short pins 2-3 for a few seconds.
4. Return JP14 to its normal setting by shorting pin 1 & pin 2.
5. Connect ATX power cable back to connector PWR2.



Pin 1



Normal (default)



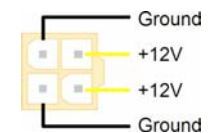
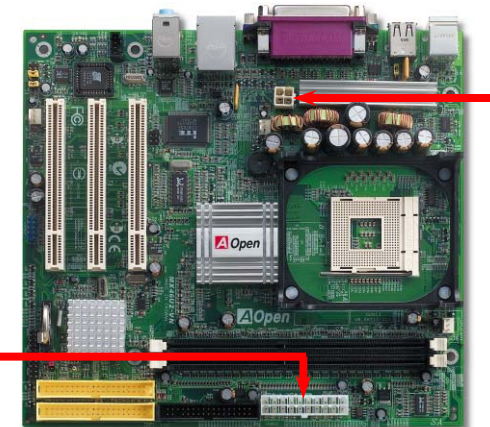
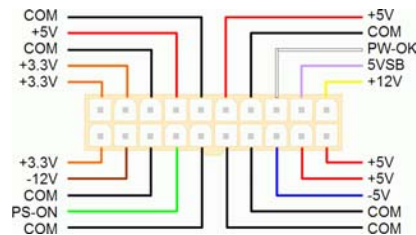
Clear CMOS

**Tip:** When should I Clear CMOS?

1. Boot fails because of overclocking...
2. Forget password...
3. Troubleshooting...

## 2. Connecting ATX Power Connector

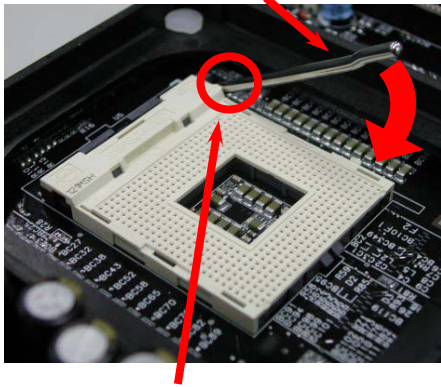
This motherboard comes with a 20-pin and 4-pin ATX power connector as shown below. Make sure you plug in the right direction. We strongly recommend you to insert the 4-pin connector before connecting the 20-pin connector.



### 3. Installing Processor

This socket supports Micro-FC-PGA2 package CPU, which is the latest CPU package developed by Intel. Other forms of CPU package are impossible to be fitted in.

CPU socket lever



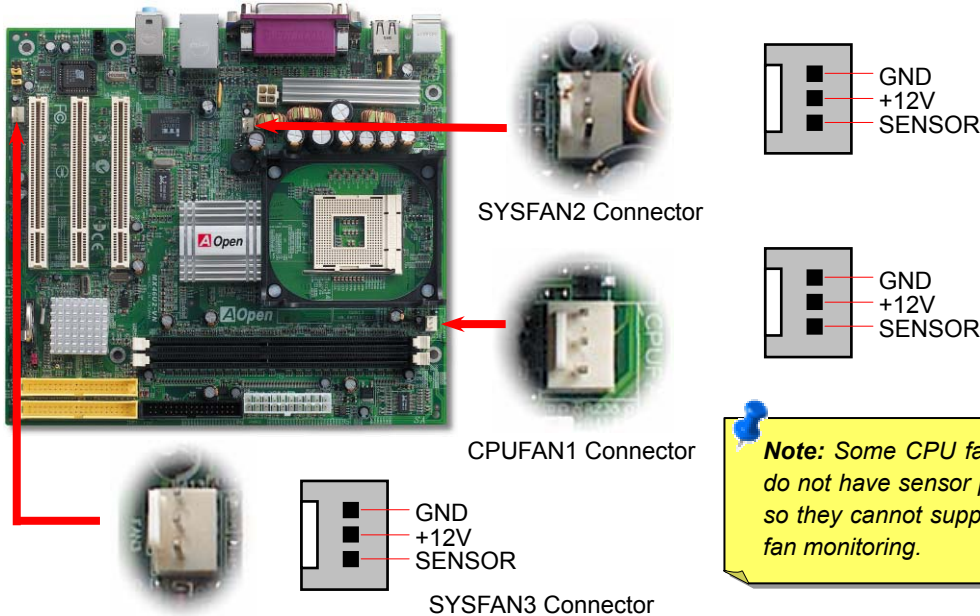
1. Pull up the CPU socket lever and up to 90-degree angle.
2. Locate Pin 1 in the socket and look for a (golden) cut edge on the CPU upper interface. Match Pin 1 and cut edge. Then insert the CPU into the socket.
3. Press down the CPU socket lever and finish CPU installation.

CPU Pin 1 and cut edge

**Note:** If you do not match the CPU socket Pin 1 and CPU cut edge well, you may damage the CPU.

### 4. Installing CPU & System Fan

Plug in the CPU fan cable to the 3-pin **CPUFAN1** connector. If you have chassis fan, you can also plug it in **SYSFAN2** or **SYSFAN3** connector.



**Note:** Some CPU fans do not have sensor pin so they cannot support fan monitoring.

### 5. Setting CPU Voltage and Frequency

#### Setting CPU Core Voltage

This motherboard supports CPU VID function. The CPU core voltage will be automatically detected.

#### Setting CPU Frequency

This motherboard is CPU jumper-less design, you can set CPU frequency through the BIOS setup, and no jumpers or switches are needed. The default setting is "table select mode". You can adjust the FSB from "CPU Host/SDRAM/PCI Clock" for overclocking.

#### BIOS Setup > Frequency / Voltage Control

CPU Ratio	

**Warning:** SIS 650GX Chipset supports maximum 400MHz system bus, higher clock setting may cause serious system damage.

Northwood CPU	CPU Core Frequency	FSB Clock	System Bus	Ratio
Pentium 4 1.6G	1600MHz	100MHz	400MHz	16x
Pentium 4 1.8G	1800MHz	100MHz	400MHz	18x
Pentium 4 2.0G	2000MHz	100MHz	400MHz	20x
Pentium 4 2.2G	2200MHz	100MHz	400MHz	22x
Pentium 4 2.4G	2400MHz	100MHz	400MHz	24x

**Note:** Since the latest processor, Northwood, would detect the clock ratio automatically, you may not be able to adjust the clock ratio in BIOS manually.

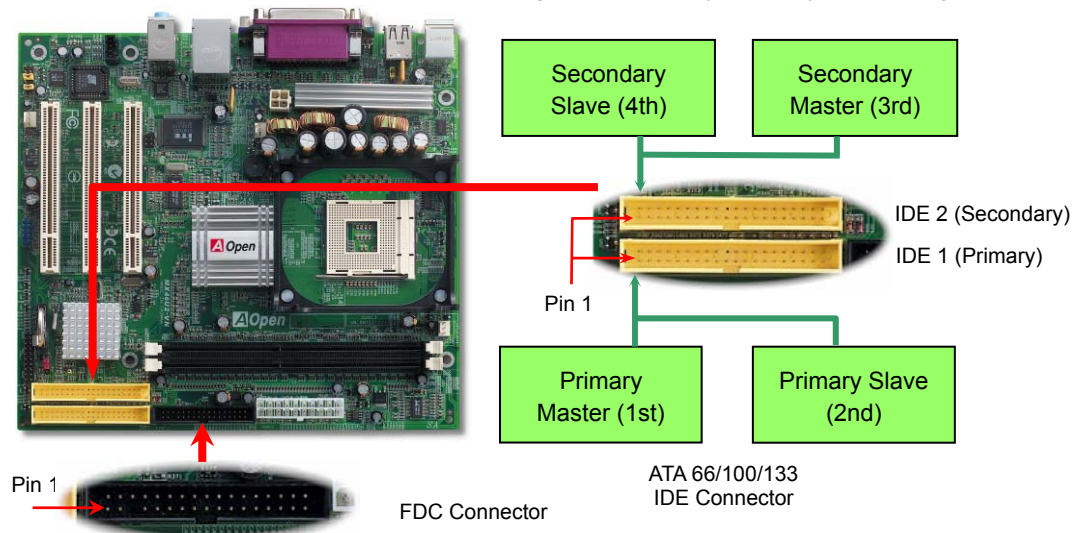
Willamette CPU	CPU Core Frequency	FSB Clock	System Bus	Ratio
Pentium 4 1.5G	1500MHz	100MHz	400MHz	15x
Pentium 4 1.6G	1600MHz	100MHz	400MHz	16x
Pentium 4 1.7G	1700MHz	100MHz	400MHz	17x
Pentium 4 1.8G	1800MHz	100MHz	400MHz	18x
Pentium 4 1.9G	1900MHz	100MHz	400MHz	19x
Pentium 4 2.0G	2000MHz	100MHz	400MHz	20x

Celeron CPU	CPU Core Frequency	FSB Clock	System Bus	Ratio
Celeron 1.7G	1700MHz	100MHz	400MHz	17x
Celeron 1.8G	1800MHz	100MHz	400MHz	18x
Celeron 2.0G	2000MHz	100MHz	400MHz	20x
Celeron 2.1G	2100MHz	100MHz	400MHz	21x



## 6. Connecting IDE and Floppy Cables

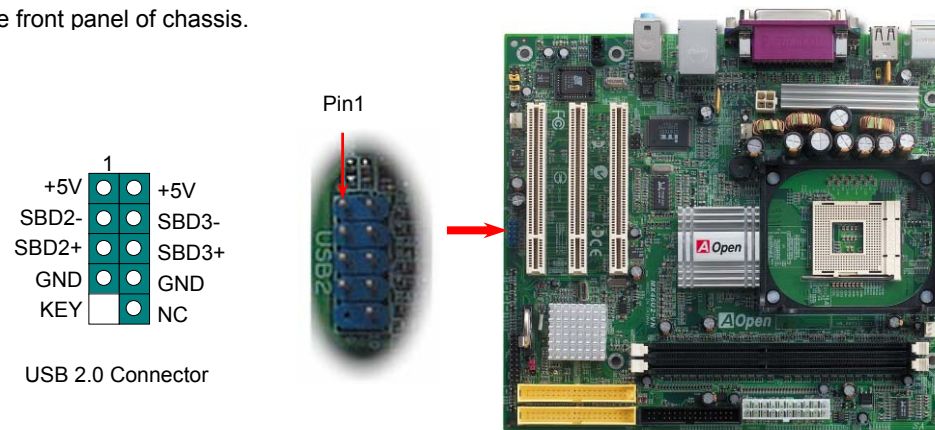
Connect 34-pin floppy cable and 40-pin, 80-wire IDE cable to floppy connector FDC and IDE connector. Be careful of the pin 1 orientation. Wrong orientation may cause system damage.



## 8. Support Six USB 2.0 Connectors

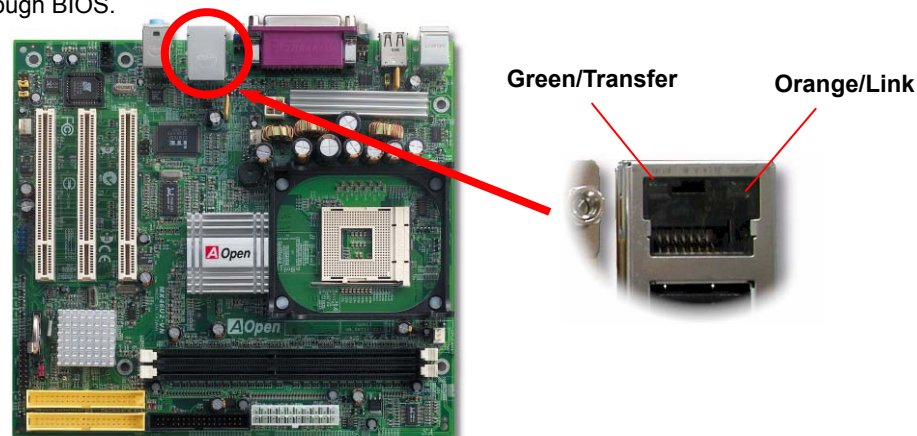


This motherboard provides six [USB 2.0](#) ports to connect USB devices such as mouse, keyboard, modem, printer, etc. There are four ports on the PC99 back panel. You can use proper cables to connect USB devices from PC99 back panel or connect USB 2.0 header to the front panel of chassis.



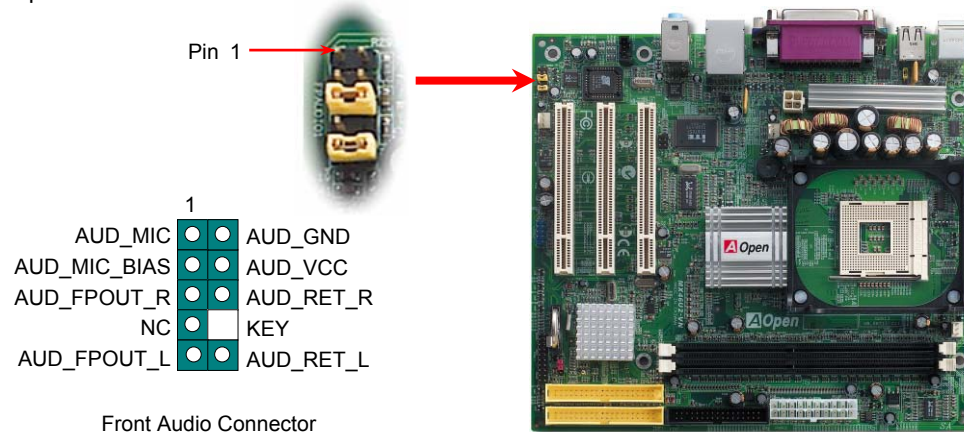
## 7. 10/100 Mbps LAN onboard

The South Bridge SiS962L includes a fast Ethernet controller on chip. On the strength of RealTek 8201BL PHY on board, which is a highly-integrated Platform LAN Connect device, it provides 10/100M bps Ethernet for office and home use, the Ethernet RJ45 connector is located on top of USB connectors. The orange LED indicates the link mode, it lights when linking to network. The green LED indicates the transfer mode, and it lights when data is transferring. To enable or disable this function, you may simply adjust it through BIOS.



## 9. Front Audio Connector

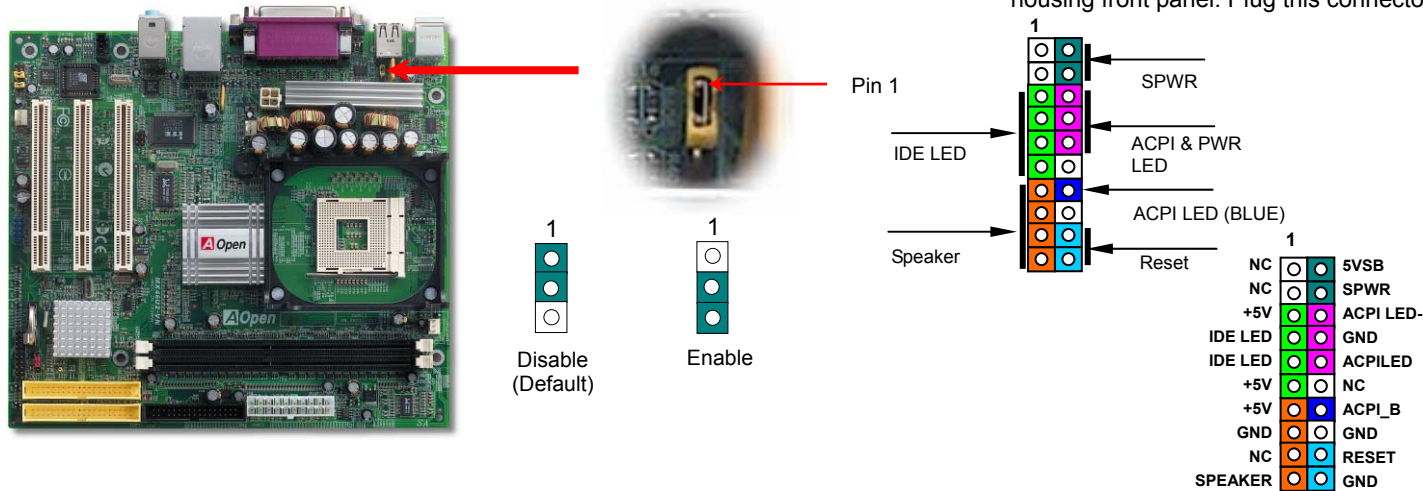
If the housing has been designed with an audio port on the front panel, you'll be able to connect onboard audio to front panel through this connector. By the way, please remove the jumper cap from the Front Audio Connector before you connect the cable. Do not remove these yellow jumpers cap if your housing doesn't have an audio port on the front panel.





## 10. JP28 Keyboard/Mouse Wake-up Jumper

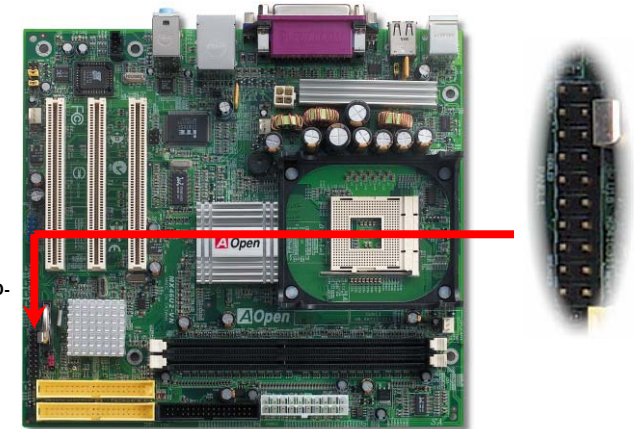
This motherboard provides keyboard / mouse wake-up function. You can use JP28 to enable or disable this function, which could resume your system from suspend mode with keyboard or mouse installed. The factory default setting is set to "Disable"(1-2), and you may enable this function by setting the jumper to 2-3.



## 12. Front Panel Connector

Attach the power LED, speaker, and reset switch connectors to the corresponding pins. If you enable "Suspend Mode" item in BIOS Setup, the ACPI & Power LED will keep flashing while the system is in suspend mode.

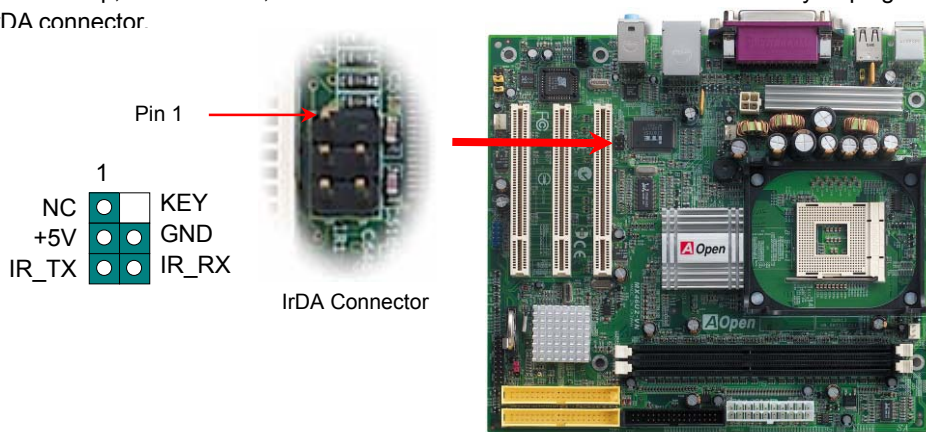
Locate the power switch cable from your ATX housing. It is 2-pin female connector from the housing front panel. Plug this connector to the soft-power switch connector marked **SPWR**.



## 11. IrDA Connector

The IrDA connector can be configured to support wireless infrared module, with this module and application software such as Laplink or Windows 95 Direct Cable Connection, the user can transfer files to or from laptops, notebooks, PDA devices and printers. This connector supports HPSIR (115.2Kbps, 2 meters) and ASK-IR (56Kbps).

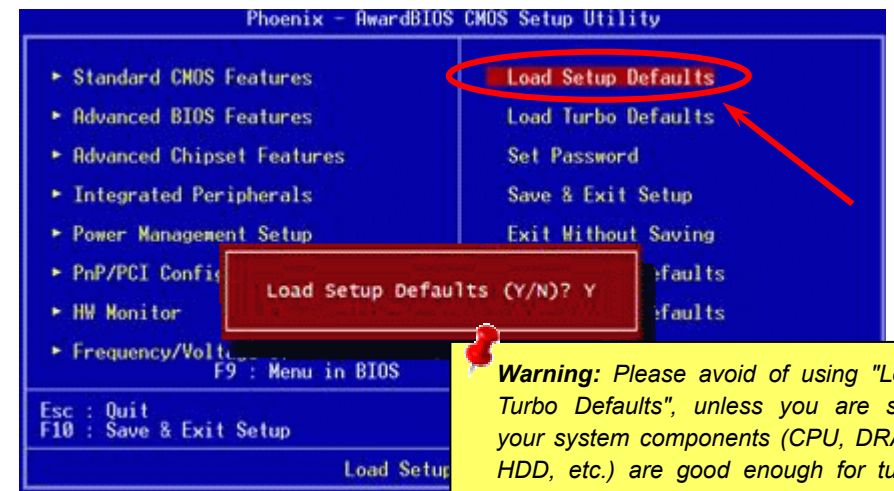
Install the infrared module onto the **IrDA** connector and enable the infrared function from BIOS Setup, UART Mode, make sure to have the correct orientation when you plug in the IrDA connector



## 13. Power-on and Load BIOS Setup



After you finish jumper settings and connect correct cables, power on and enter the BIOS Setup. Press <Del> during POST (Power On Self Test). Choose "Load Setup Defaults" for recommended optimal performance.



**Warning:** Please avoid of using "Load Turbo Defaults", unless you are sure your system components (CPU, DRAM, HDD, etc.) are good enough for turbo setting.

## 14. BIOS Upgrade under Windows Environment



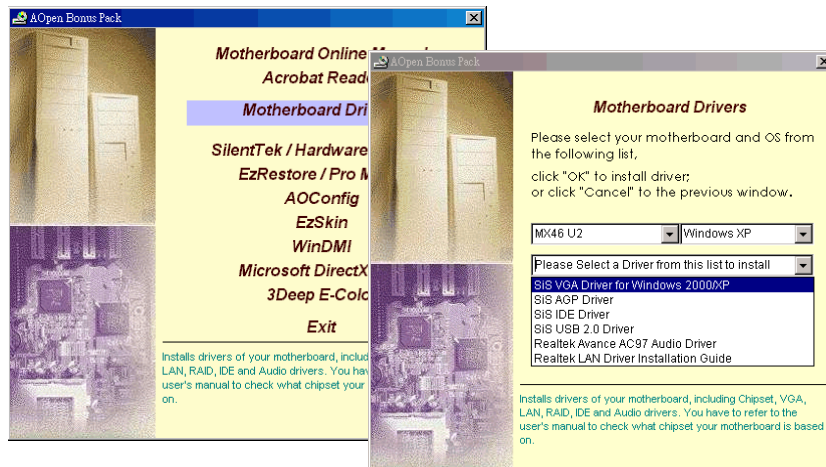
You may accomplish BIOS upgrade procedure with EzWinFlash by the following steps, and it's STRONGLY RECOMMENDED to close all the applications before you start the upgrading.

1. Download the new version of BIOS package [zip](#) file from our official web site. Unzip the download BIOS package (ex: WMX46U2102.ZIP) with WinZip (<http://www.winzip.com>) in Windows environment.
2. Save the unzipped files into a folder, for example, WMX46U2102.EXE & WMX46U2102.BIN.
3. Double click on WMX46U2102.EXE, EzWinFlash will detect the model name and BIOS version of your motherboard. If you had got the wrong BIOS, you will not be allowed to proceed with the flash steps.
4. You may select preferred language in the main menu, then click [Start Flash] to start the BIOS upgrade procedure.
5. EzWinFlash will complete all the process automatically, and a dialogue box will pop up to ask you to restart Windows. You may click [YES] to reboot Windows.
6. Press <Del> at POST to [enter BIOS setup](#), choose "Load Setup Defaults", then "Save & Exit Setup". Done!

**It is strongly recommended NOT to turn off the power or run any application during FLASH PROCESS.**

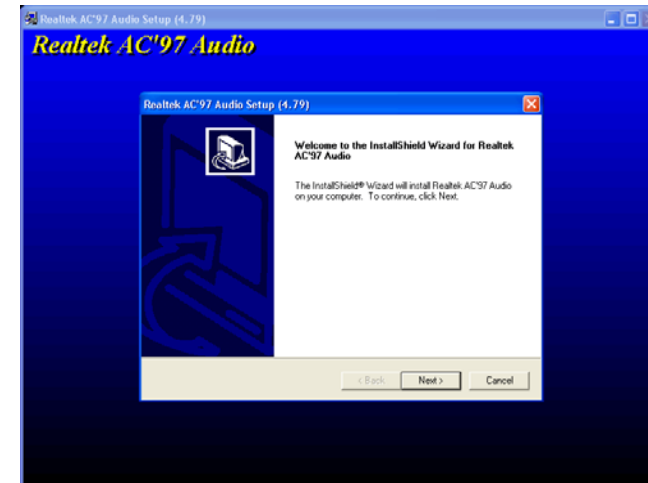
## 15. AOpen Bonus Pack CD

You can use the autorun menu of Bonus CD. Choose the utility and driver and select model name. After selecting the model name, you can install its AGP, VGA, IDE, Audio, LAN and USB 2.0 drivers from this CD.



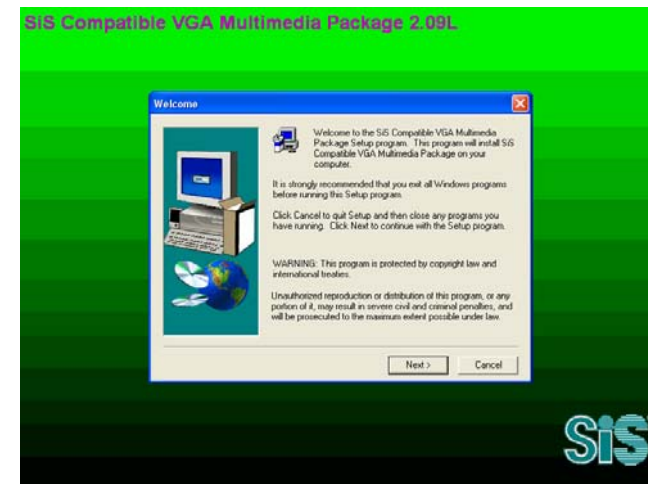
## 16. Installing Onboard Sound Driver

This motherboard comes with [AC97 CODEC](#). You can find the audio driver from the Bonus Pack CD auto-run menu.



## 17. Installing Onboard VGA Driver

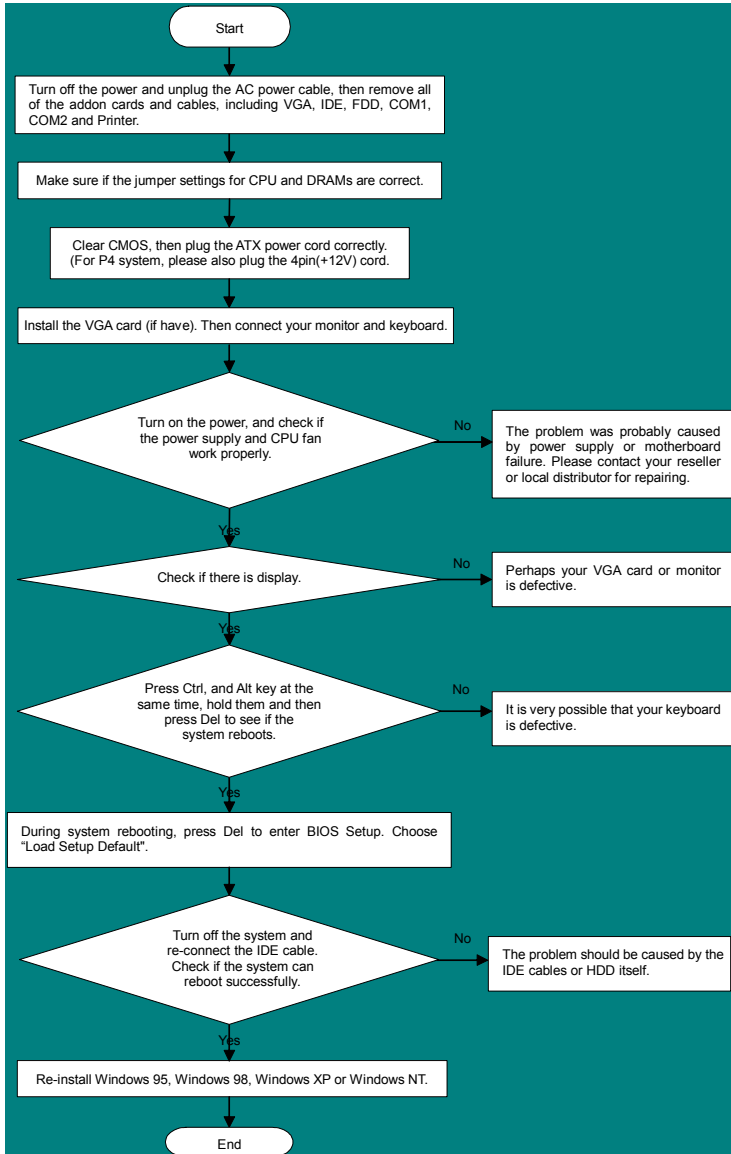
This motherboard integrates VGA Engine in chipset. You can install VGA driver from the Bonus Pack CD auto-run menu.





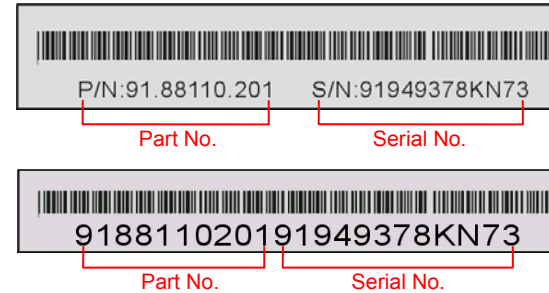
# Troubleshooting

If you encounter any trouble while booting your system, follow the procedures accordingly to resolve the problem.



## Part Number and Serial Number

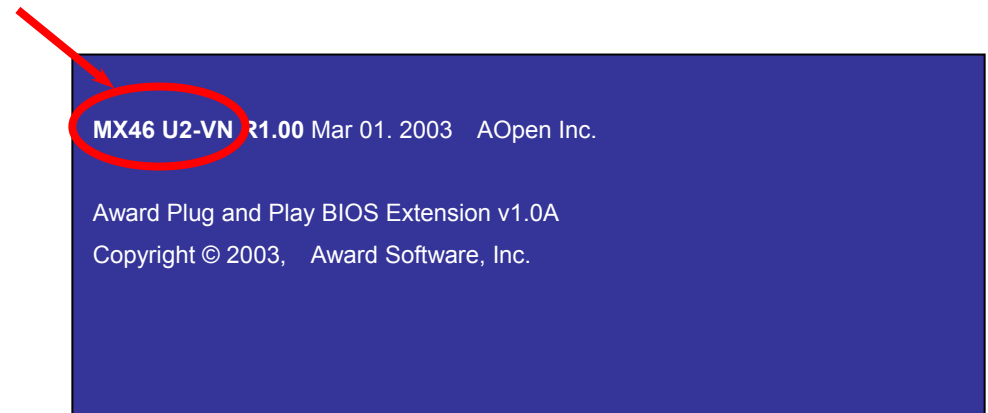
The Part Number and Serial number are printed on bar code label. You can find the bar code label on the outside packing, on ISA/CPU slot or on component side of PCB. For example:



**P/N: 91.88110.201** is part number, **S/N: 91949378KN73** is serial number.

## Model name and BIOS version

Model name and BIOS version can be found on upper left corner of first boot screen (POST screen). For example:



**MX46 U2-VN** is model name of motherboard; **R1.00** is BIOS version





# Technical Support

Dear Customer,

Thanks for choosing AOpen products. To provide the best and fastest service to our customer is our first priority. However, we receive numerous emails and phone-calls worldwide everyday; it is very hard for us to serve everyone on time. We recommend you to follow the procedures below and seek help before contacting us. With your help, we can then continue to provide the best quality service to more customers.

Thanks very much for your understanding!

AOpen Technical Supporting Team

Pacific Rim  
AOpen Inc.  
Tel: 886-2-3789-5888  
Fax: 886-2-3789-5899

Europe  
AOpen Computer b.v.  
Tel: 31-73-645-9516  
Fax: 31-73-645-9604

China  
艾尔鹏国际贸易(上海)有限公司  
Tel: 86-21-6225-8622  
Fax: 86-21-6225-7926

America  
AOpen America Inc.  
Tel: 1-510-489-8928  
Fax: 1-510-489-1998

Germany  
AOpen Computer GmbH.  
Tel: 49-1805-559191  
Fax: 49-2102-157799

Japan  
AOpen Japan Inc.  
Tel: 81-048-290-1800  
Fax: 81-048-290-1820

Web Site: <http://www.aopen.com.tw>

E-mail: Send us email by going through the contact form below.

English <http://english.aopen.com.tw/tech/default.htm>

Japanese <http://www.aopen.co.jp/tech/default.htm>

Chinese <http://www.aopen.com.tw/tech/default.htm>

German <http://www.aopencom.de/tech/default.htm>

Simplified Chinese <http://www.aopen.com.cn/tech/default.htm>

