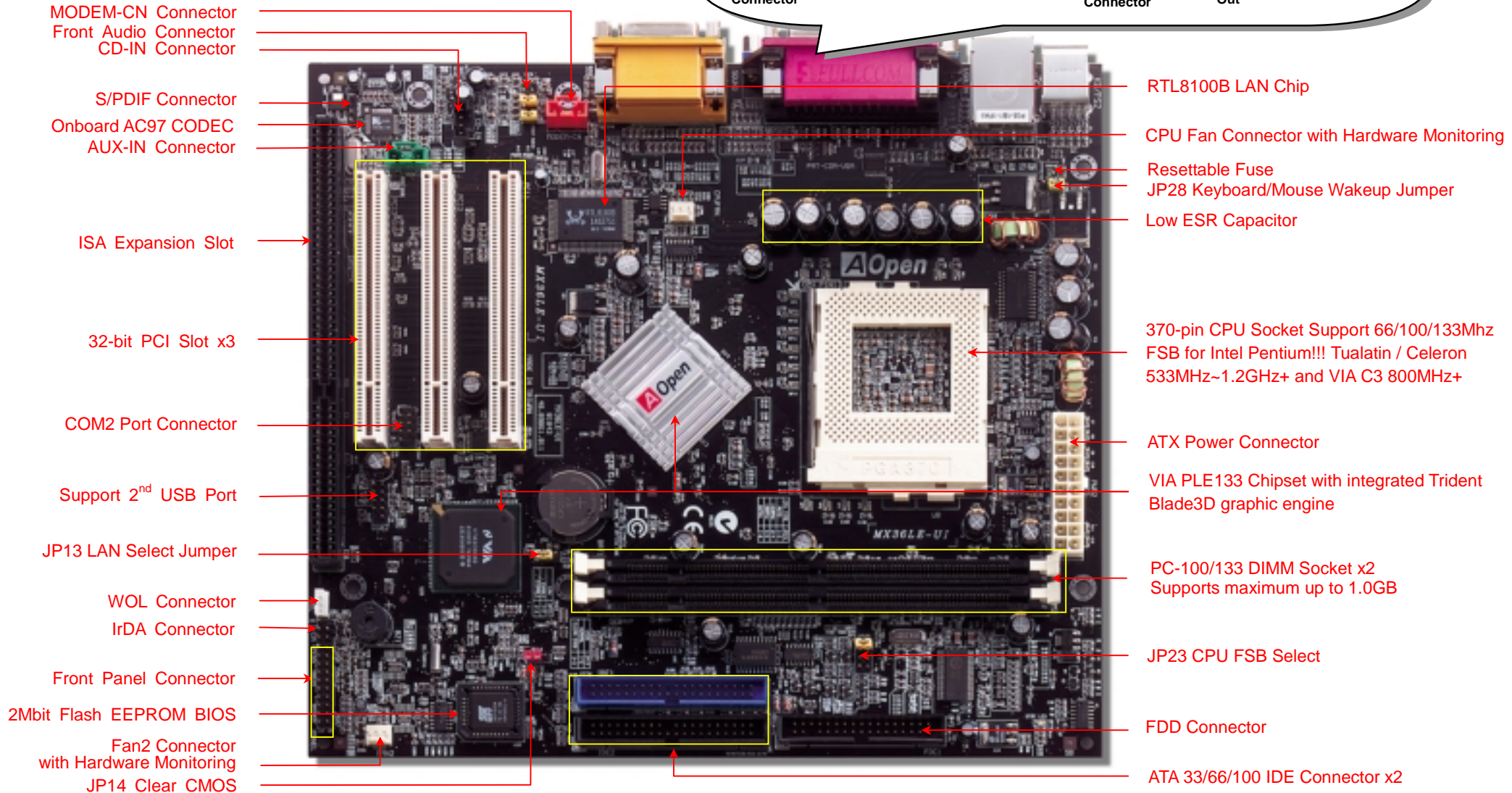
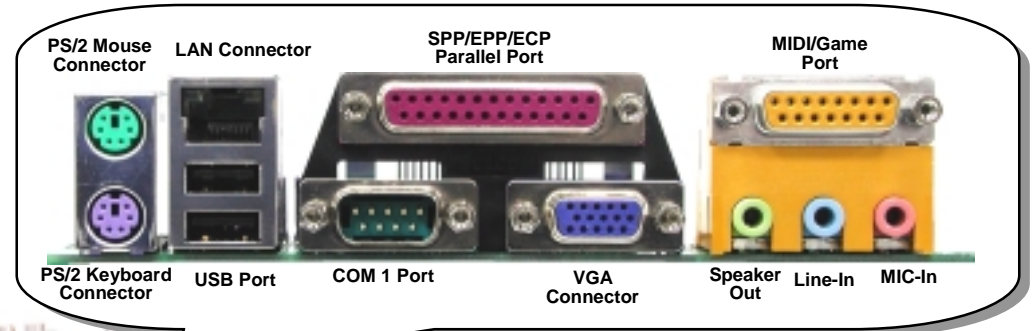


MX36LE-UI

Easy Installation Guide



Before You Start



Everything you need to boot this motherboard is included in this Easy Installation Guide. For more information, a complete **Online User's Manual** can be found in the **Bonus Pack CD**. Thanks for the help of saving our earth!

Accessory Checklist

- 80-wire IDE Cable x 1
- Floppy Drive Cable x 1
- Bonus Pack CD x 1
- This Easy Installation Guide x 1
- Motherboard x 1

PART NO: 49.89Q03.001

DOC. NO: MX36LEUI-EG-E0203A

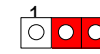
1. Clear CMOS Data



Pin 1



Normal (default)



Clear CMOS

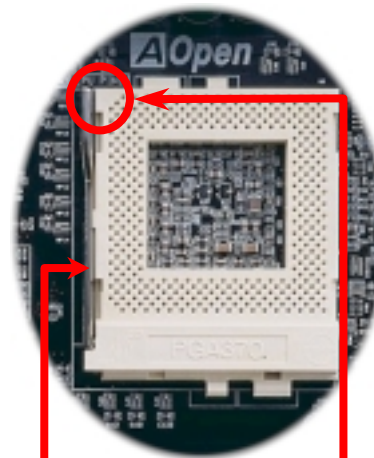
You can clear CMOS to restore system default setting. To clear the CMOS, follow the procedure below.

1. Turn off the system and unplug the AC power.
2. Remove ATX power cable from connector PWR2.
3. Locate JP14 and short pins 2-3 for a few seconds.
4. Return JP14 to its normal setting by shorting pin 1 and pin 2.
5. Connect ATX power cable back to connector PWR2.

Tip: When should I Clear CMOS?

1. Boot fail because of overclocking...
2. Forget password...
3. Troubleshooting...

2. Installing CPU



CPU socket Lever

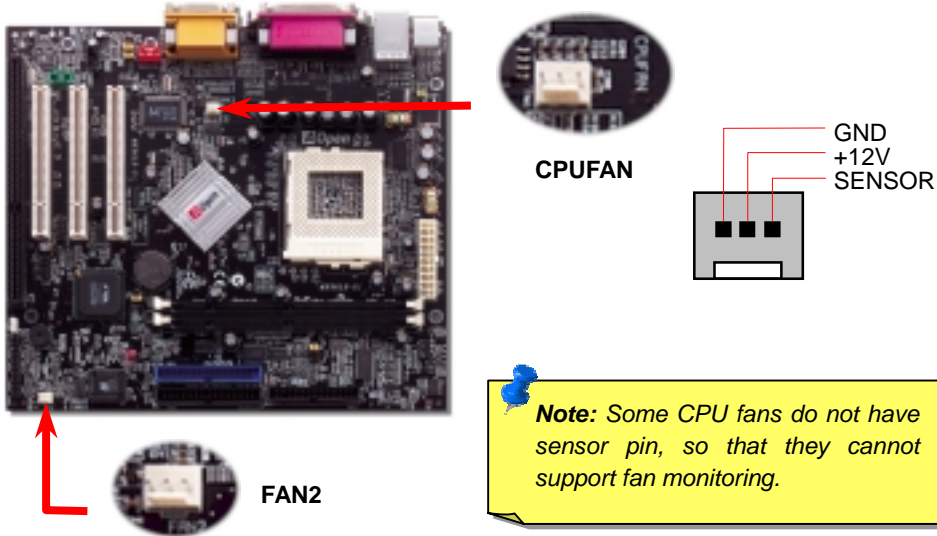
CPU Pin1 and cut edge

1. Pull up the CPU socket lever and up to 90-degree angle.
2. Locate Pin 1 in the socket and look for a black dot or cut edge on the CPU upper interface. Match Pin 1 and cut edge. Then insert the CPU into the socket.
3. Press down the CPU socket lever and finish CPU installation.

Note: If you do not match the CPU socket Pin 1 and CPU cut edge well, you may damage the CPU.

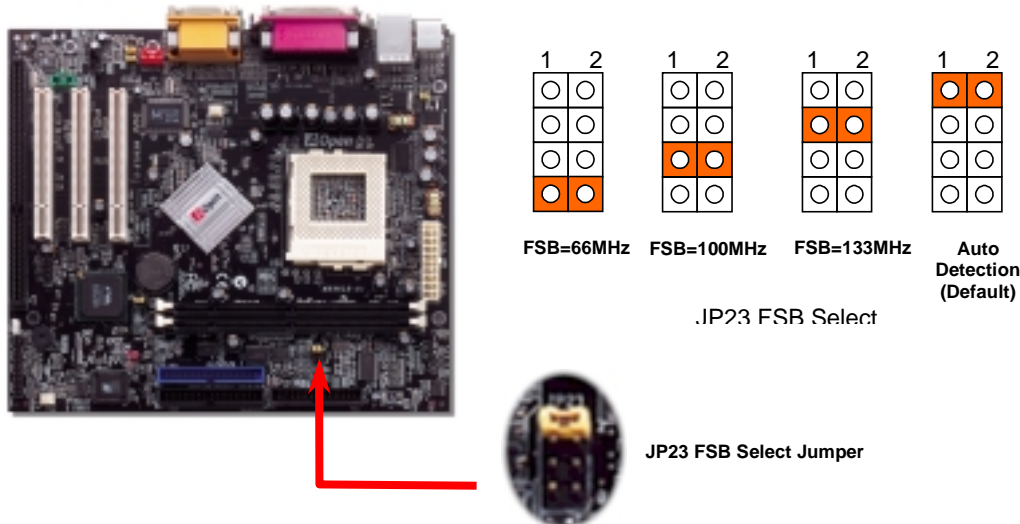
3. Installing CPU & Housing Fan

Plug in the CPU fan cable to the 3-pin **CPUFAN** connector. If you have a housing fan, you can also plug it on **FAN2** connector.



4. JP23 Adjust FSB/PCI Clock

This jumper is used to specify the relationship of PCI and FSB clock. Generally speaking, if you are not an overclocker, we recommend you to set at the default setting.



5. Setting CPU Voltage & Frequency

CPU Core Voltage Auto-Detection

This motherboard supports CPU VID function. The CPU core voltage will be automatically detected. It is not necessary to set CPU Core Voltage.

Setting CPU Frequency

This motherboard is CPU jumper-less design, you can set CPU frequency through the BIOS setup, and no jumpers or switches are needed.

BIOS Setup > Frequency/Voltage Control > CPU Host Clock (CPU/PCI)

Core Frequency = CPU FSB Clock * CPU Ratio

CPU Ratio	3x, 3.5x, 4x, 4.5x, ...16x
CPU FSB	66.8, 75, 83.3, 100, 103, 105, 110, 112, 115, 120, 124, 133, and 150MHz

CPU	CPU Core Frequency	FSB Clock	Ratio
Celeron 533	533MHz	66MHz	8x
Celeron 566	566MHz	66MHz	8.5x
Celeron 600	600MHz	66MHz	9x
Celeron 667	667MHz	66MHz	10x
Celeron 700	700MHz	66MHz	10.5x
Celeron 800	800MHz	100MHz	8x
Celeron 900	900MHz	100MHz	9x
Celeron 1.2G	1.2GHz	100MHz	12x
Pentium III 800E	800MHz	100MHz	8x
Pentium III 850E	850MHz	100MHz	8.5x
Pentium III 533EB	533MHz	133MHz	4x
Pentium III 600EB	600MHz	133MHz	4.5x
Pentium III 667EB	667MHz	133MHz	5x
Pentium III 733EB	733MHz	133MHz	5.5
Pentium III 800EB	800MHz	133MHz	6x
Pentium III 866EB	866MHz	133MHz	6.5
Pentium III 933EB	933MHz	133MHz	7x
Pentium III 1G	1000MHz	133MHz	7.5x
Pentium III 1.13G	1.13GHz	133MHz	8.5x
Pentium III 1.2G	1.2GHz	133MHz	9x
Pentium III 1.3G	1.3GHz	133MHz	10x

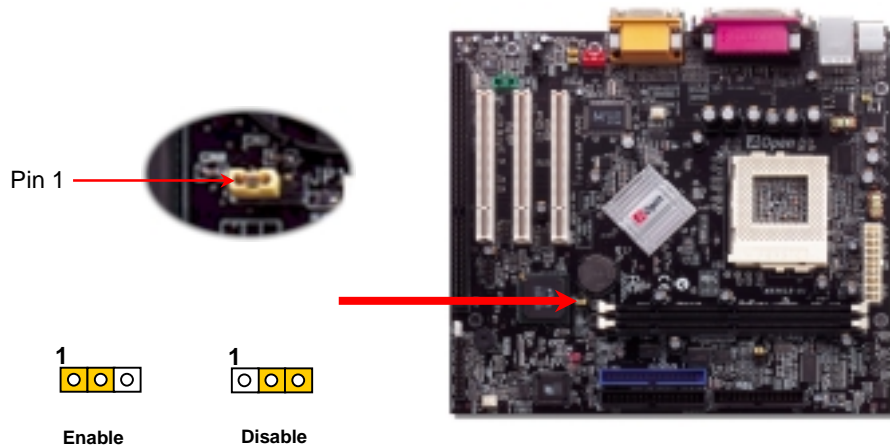
Warning: VIA PLE133 chipset supports maximum 133MHz FSB, higher clock setting may cause serious system damage.

Home

Tip: If your system hangs or fails to boot because of overclocking, simply use <Home> key to restore the default setting.

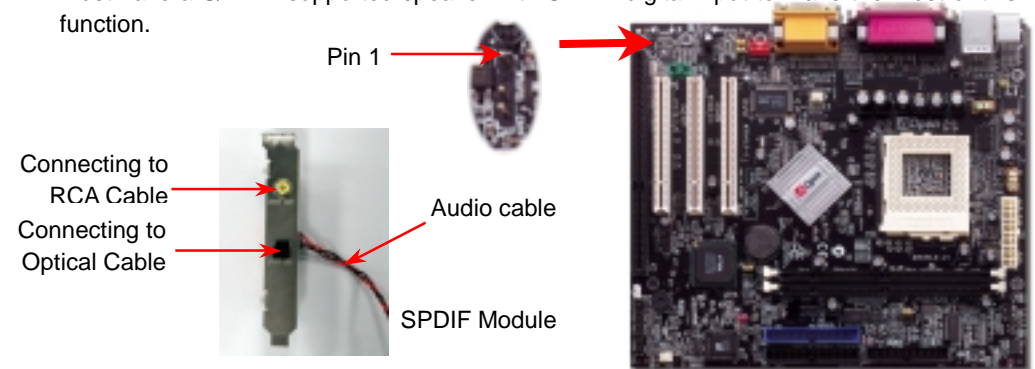
6. JP13 LAN Select Jumper

This jumper allows you to enable or disable the LAN onboard function by adjusting the position of yellow cap.



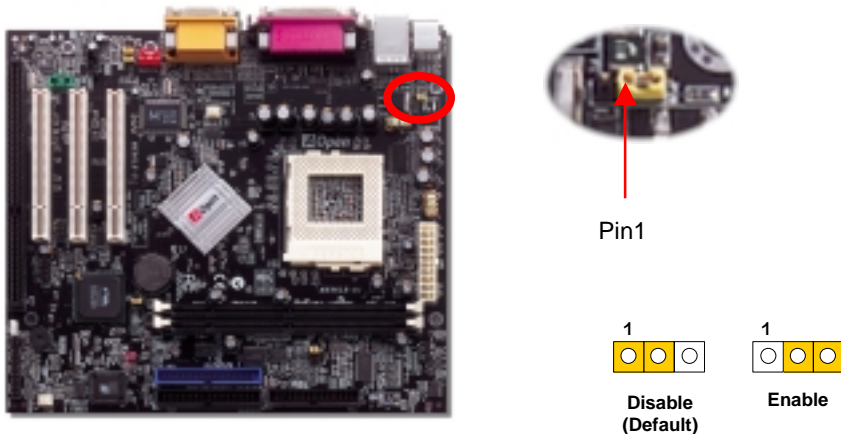
8. S/PDIF Connector (Optional) **NEW!**

S/PDIF (Sony/Philips Digital Interface) is a latest audio transfer file format that provides impressive quality through optical fiber and allows you to enjoy digital audio instead of analog. Normally there are two S/PDIF outputs as shown, one for RCA connector, the most common one used for consumer audio products, and the other for optical connector with a even better audio quality. Through a specific audio cable, you can connect the SPDIF connector to a S/PDIF audio module bearing S/PDIF digital output. However, you must have a S/PDIF supported speaker with SPDIF digital input to make the most of this function.

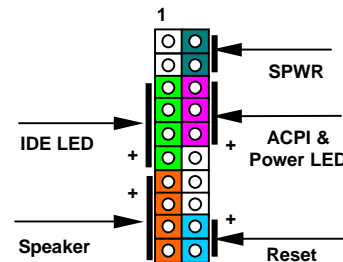


7. JP28 Keyboard / Mouse Wakeup Jumper

This motherboard provides keyboard / mouse wake-up function. You can use JP28 to enable or disable this function, which could resume your system from suspend mode with keyboard or mouse. The factory default setting is set to "Disable"(1-2), and you may enable this function by setting the jumper to 2-3.

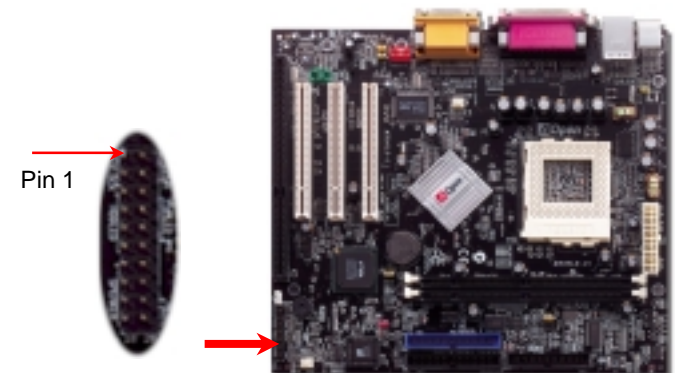
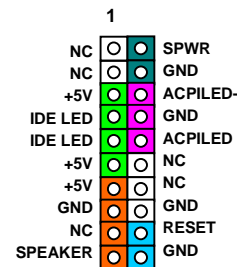


9. Connecting Front Panel Cable

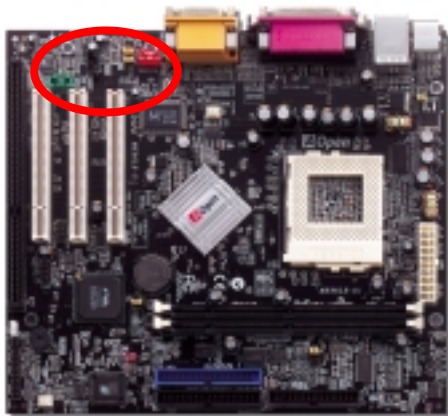


Attach the power LED, ACPI, speaker, power and reset switch connectors to the corresponding pins. If you enable "Suspend Mode" item in BIOS Setup, the ACPI & Power LED will keep flashing while the system is in suspend mode.

Locate the power switch cable from your ATX housing. It is 2-pin female connector from the housing front panel. Plug this connector to the soft-power switch connector marked **SPWR**.



10. Connecting CD / MODEM / AUX-IN



The **CD-IN** connector is used to connect CD Audio cable from CDROM or DVD drive to onboard sound.

The **MODEM-CN** connector is used to connect Mono In / Mic Out cable from internal modem card to onboard sound circuit.

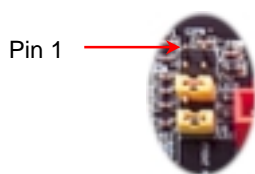
The **AUX-IN** connector is used to connect MPEG Audio cable from MPEG card to onboard sound.

Connector	Pin1	Pin2	Pin3	Pin4
CD-IN	Left	GND	GND	Right
MODEM-CN	Mono In	GND	GND	Mic Out
AUX-IN	Left	GND	GND	Right

11. Connecting Front Audio Connector

If the housing is designed with an audio port on the front panel, you'll be able to connect onboard audio to front panel through this connector. Please remove the jumper cap from the front audio connector before you connect the cable. Do not remove this yellow jumper cap if your housing does not have an audio port on the front panel.

Front Audio Connector

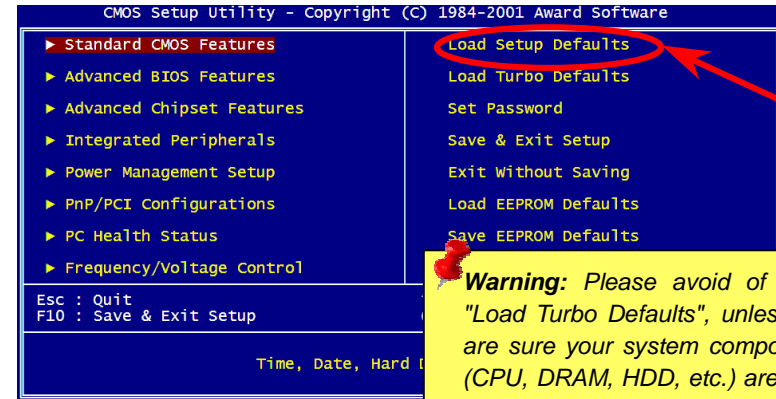


	1	2	
FP_MIC	●	●	GND
FP_VREF	●	●	+5V
PHONE_R	●	●	NC
NC	●	●	KEY
PHONE_L	●	●	NC
	9	10	

12. Power-on and Load BIOS Setup



After you finish jumper settings and connect correct cables, power on and enter the BIOS Setup. Press during POST (Power On Self Test). Choose "Load Setup Defaults" for recommended optimal performance.



Warning: Please avoid of using "Load Turbo Defaults", unless you are sure your system components (CPU, DRAM, HDD, etc.) are good enough for turbo setting.

13. Installing LAN Driver

You can install LAN Driver under Windows95/98, Windows NT and Windows 2000 for Realtek RTL8139 Family (RTL8100 included) PCI Fast Ethernet adapter by following steps.

Installing driver procedure on Microsoft Windows 95 :

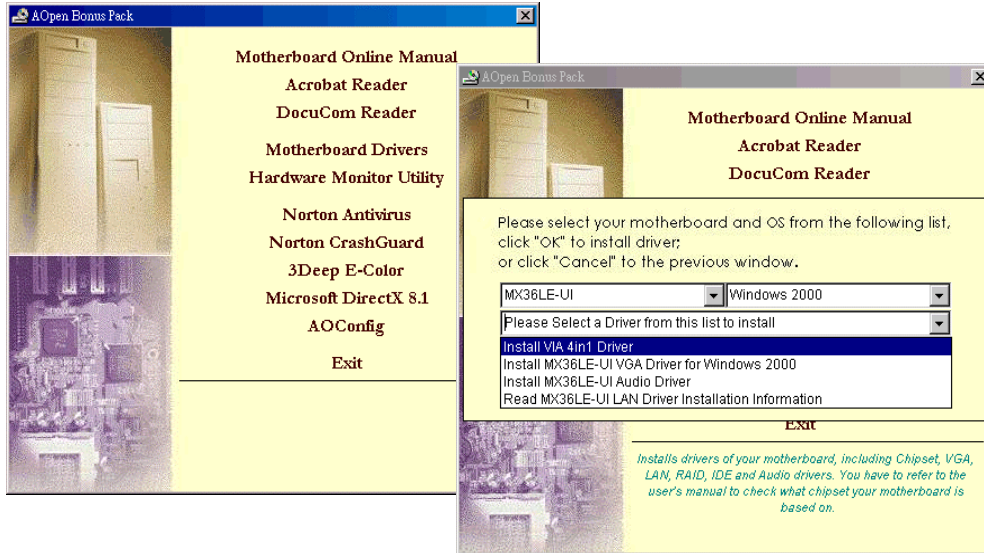
1. Select "Driver from disk provided by hardware manufacturer" when being asked which driver you would like to install.
2. Specify the setup file pathname
[CD-ROM]:Driver\LAN\RTL8100\Windows\Win95\WIN95A (for Windows 95 and Win95A) or
[CD-ROM]:Driver\LAN\RTL8100\Windows\Win95 (for Windows 95 OSR2).
3. Follow the procedure and insert Windows 95 system disk to complete setup step.
4. Windows 95 will finish the other installation procedures automatically, and then restart your system.

Installing driver for Win98/Win98 SE/Windows2000/Windows ME :

1. Select "Driver from disk provided by hardware manufacturer" when being asked which driver you would like to install.
2. Specify the setup file pathname
[CD-ROM]:Driver\LAN\RTL8100\Windows\WIN98 (for Windows 98/98 SE) or
[CD-ROM]:Driver\LAN\RTL8100\Windows\WIN2000 (for Windows 2000) or
[CD-ROM]:Driver\LAN\RTL8100\Windows\Windows ME (for Windows ME)
3. Follow the procedure and insert your system disk (Win98/Win98 SE/Windows2000/Windows ME) to complete setup step.
4. Win98/Win98 SE/Windows2000/Windows ME will finish the other installation procedures automatically, and then restart your system.

14. AOpen Bonus Pack CD

You can use the autorun menu of Bonus CD. Choose the utility and driver and select model name.



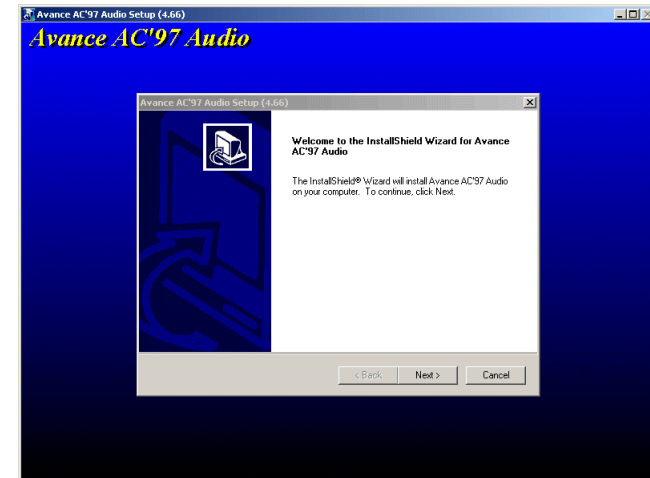
15. Installing Onboard AGP Driver

VIA PLE133 chipsets integrates a 2D/3D graphics accelerator and provides AGP 2X/4X incredible performance to access main memory at over 1GB/s. You can find the AGP driver from the autorun menu of Bonus Pack CD.



16. Installing Onboard Audio Driver

This motherboard comes with an AC97 CODEC. You can find the audio driver from the Bonus Pack CD autorun menu.



17. BIOS Upgrade

AOpen Easy Flash is user-friendlier than traditional flash method. The BIOS binary file and flash routine are combined together and you simply run a single file to complete the flash process.

1. Download new BIOS upgrade zipped file from AOpen's web site. For example, MX36LEUI102.ZIP.
2. Run shareware PKUNZIP (<http://www.pkware.com/>) which supports miscellaneous operation systems to extract the binary BIOS file and the flash utility. Or Winzip (<http://www.winzip.com/>) in Windows environment.
3. Save the unzipped file into a bootable floppy disk. For example, MX36LEUI102.BIN & MX36LEUI102.EXE
4. Reboot the system to DOS mode without loading any memory handler (such as EMM386) or device driver. It needs around 520K free memory space.
5. Execute A:> MX36LEUI102 and the program will do the rest of it.

DO NOT turn off the power during FLASH PROCESS until you are asked to!!

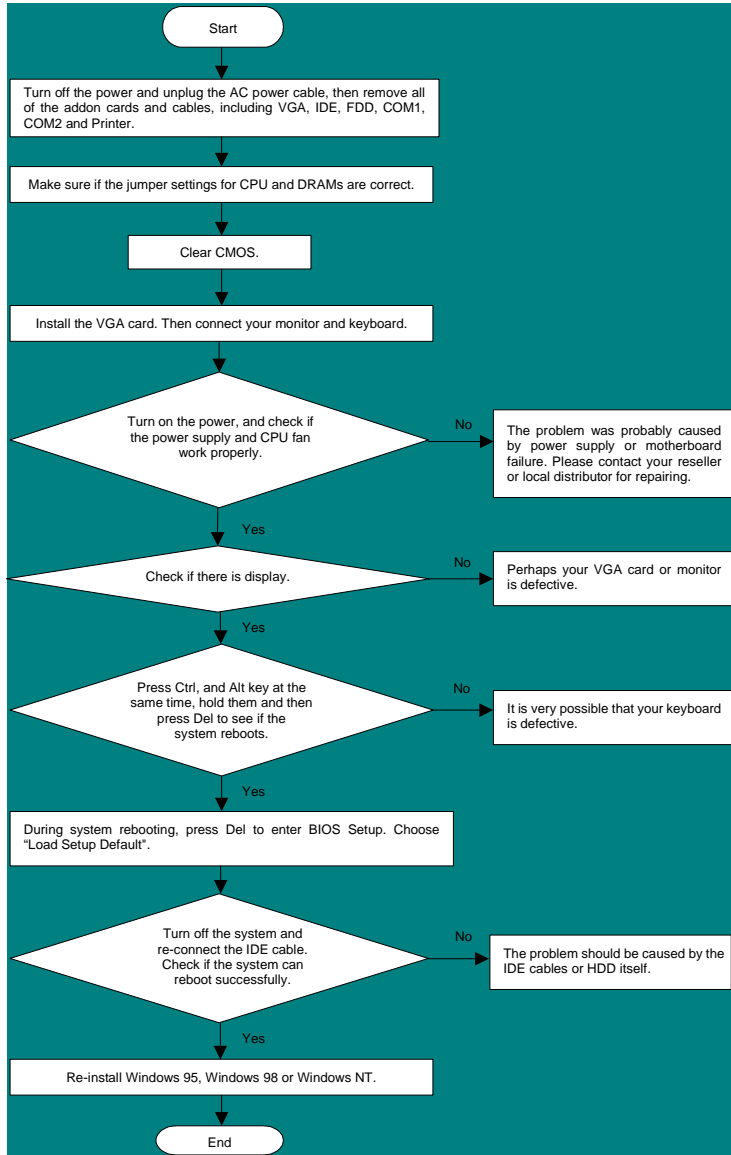
6. Reboot system and press to enter BIOS Setup, Choose "Load Setup Defaults", then "Save & Exit Setup" and finish the BIOS upgrade.

Warning: The upgrade of new BIOS will permanently replace your original BIOS content after flashing. The original BIOS setting and Win95/Win98 PnP information will be refreshed and you probably need to re-configure your system.



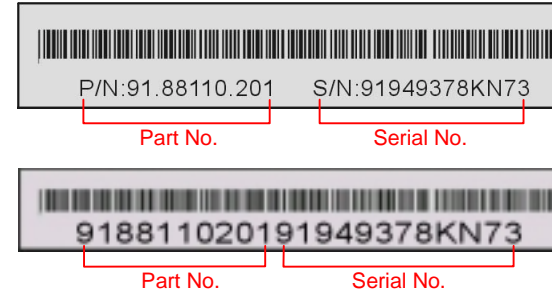
Troubleshooting

If you encounter any trouble to boot you system, follow the procedures accordingly to resolve the problem.



Part Number and Serial Number

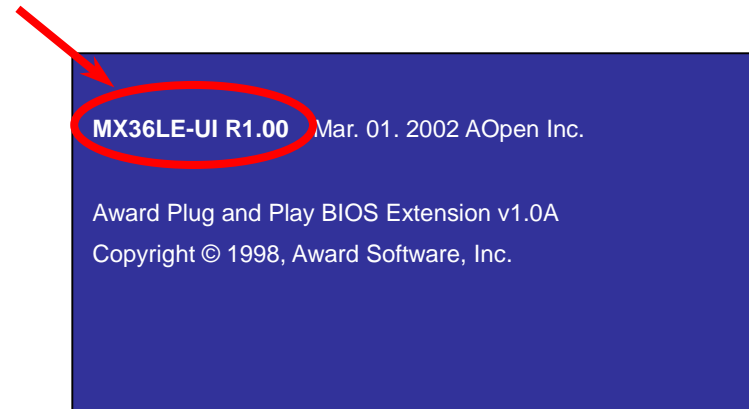
The Part Number and Serial number are printed on bar code label. You can find this bar code label on the outside packing, on ISA/CPU slot or on component side of PCB. For example:



P/N: 91.88110.201 is part number, **S/N: 91949378KN73** is serial number.

Model name and BIOS version

Model name and BIOS version can be found on upper left corner of first boot screen (POST screen). For example:



MX36LE-UI is the model name of motherboard, **R1.00** is BIOS version.



Technical Support

Dear Customer,

Thanks for choosing AOpen products. To provide the best and fastest service to our customer is our first priority. However, we receive numerous emails and phone-calls worldwide everyday, it is very hard for us to serve everyone on time. We recommend you follow the procedures below and seek help before contact us. With your help, we can then continue to provide the best quality service to more customers.

Thanks very much for your understanding!

AOpen Technical Supporting Team

Pacific Rim
AOpen Inc.
Tel: 886-2-3789-5888
Fax: 886-2-3789-5399

Europe
AOpen Computer b.v.
Tel: 31-73-645-9516
Fax: 31-73-645-9604

China
艾尔鹏国际上海(股)有限公司
Tel: 86-21-6225-8622
Fax: 86-21-6225-7926

Germany
AOpen Computer GmbH.
Tel: 49-2102-157700
Fax: 49-2102-157799

America
AOpen America Inc.
Tel: 1-408-922-2100
Fax: 1-408-922-2935

Japan
AOpen Japan Inc.
Tel: 81-048-290-1800
Fax: 81-048-290-1820

Web Site: www.aopen.com

E-mail: Send us email by going through the contact form below.

English <http://www.aopen.com/tech/contact/techusa.htm>

Japanese <http://www.aopen.co.jp/tech/contact/techjp.htm>

Chinese <http://www.aopen.com.tw/tech/contact/techtw.htm>

German <http://www.aopencom.de/tech/contact/techde.htm>

French <http://france.aopen.com/tech/contact/techfr.htm>

Simplified Chinese <http://www.aopen.com.cn/tech/contact/techcn.htm>

1

Online Manual: Please check the manual carefully and make sure the jumper settings and installation procedure are correct.
<http://www.aopen.com/tech/download/manual/default.htm>

2

Test Report: We recommend to choose board/card/device from the compatibility test reports for assembling your PC.
<http://www.aopen.com/tech/report/default.htm>

3

FAQ: The latest FAQ (Frequently Asked Questions) may contain a solution to your problem.
<http://www.aopen.com/tech/faq/default.htm>

4

Download Software: Check out this table to get the latest updated BIOS/utility and drivers.
<http://www.aopen.com/tech/download/default.htm>

5

News Group: Your problem probably had been answered by our support engineer or professional users on the news group.
<http://www.aopen.com/tech/newsgrp/default.htm>

6

Contact Distributors/Resellers: We sell our products through resellers and integrators. They should know your system configuration very well and should be able to solve your problem more efficiently. After all, it is an important reference for you if next time you want to buy something else from them.

7

Contact Us: Please prepare detail system configuration and error symptom before contacting us. The **part number**, **serial number** and **BIOS version** are also very helpful.