

M7VIT Bravo

FCC Information and Copyright

This equipment has been tested and found to comply with the limits of a Class B digital device, pursuant to Part 15 of the FCC Rules. These limits are designed to provide reasonable protection against harmful interference in a residential installation. This equipment generates, uses and can radiate radio frequency energy and, if not installed and used in accordance with the instructions, may cause harmful interference to radio communications. There is no guarantee that interference will not occur in a particular installation.

The vendor makes no representations or warranties with respect to the contents here of and specially disclaims any implied warranties of merchantability or fitness for any purpose. Further the vendor reserves the right to revise this publication and to make changes to the contents here of without obligation to notify any party beforehand.

Duplication of this publication, in part or in whole, is not allowed without first obtaining the vendor's approval in writing.

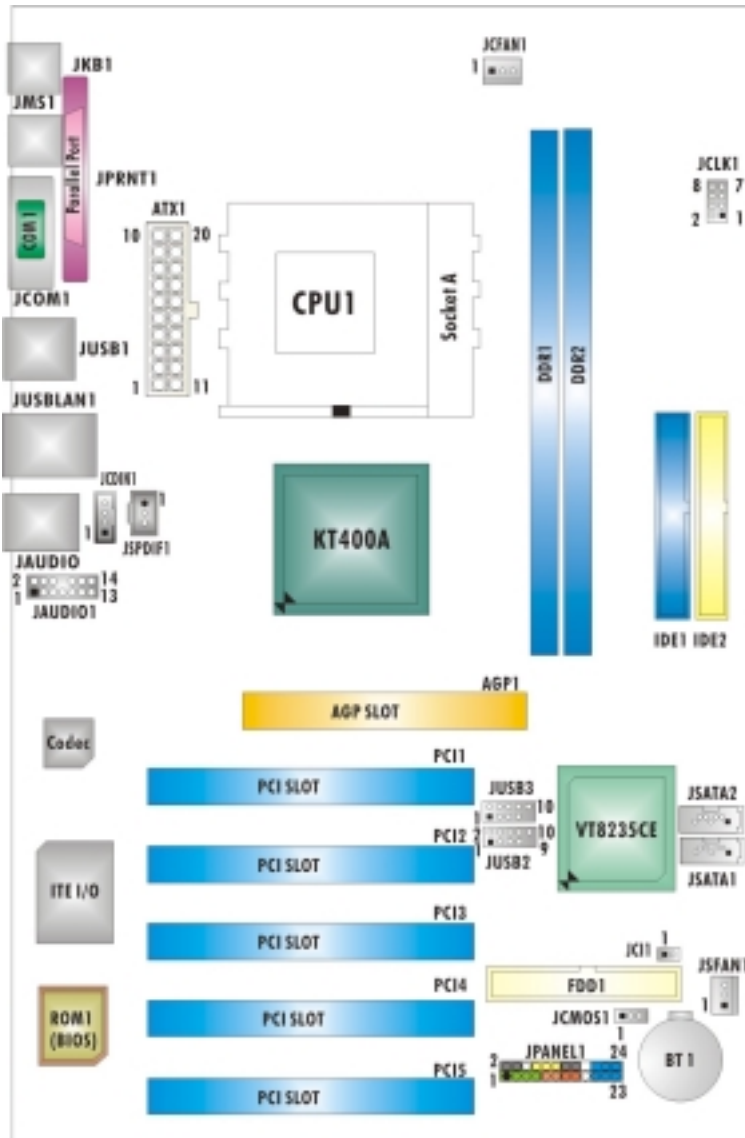
The content of this user's manual is subject to be changed without notice and we will not be responsible for any mistakes found in this user's manual. All the brand and product names are trademarks of their respective companies.

Table of the Contents

LAYOUT OF M7VIT BRAVO	1
COMPONENT INDEX.....	2
M7VIT BRAVO SYSTEM STRUCTURE	3
ENGLISH.....	4
M7VIT Bravo Features.....	4
Package contents.....	5
How to set up Jumper.....	6
CPU Installation.....	6
DDR DIMM Modules: DDR1, DDR2.....	7
Installing DDR Module	7
Jumpers, Headers, Connectors & Slots	8
WARPSPEEDER.....	13
Introduction	13
System Requirement.....	13
Installation	14
Usage	15
TROUBLE SHOOTING.....	23

M7VIT Bravo

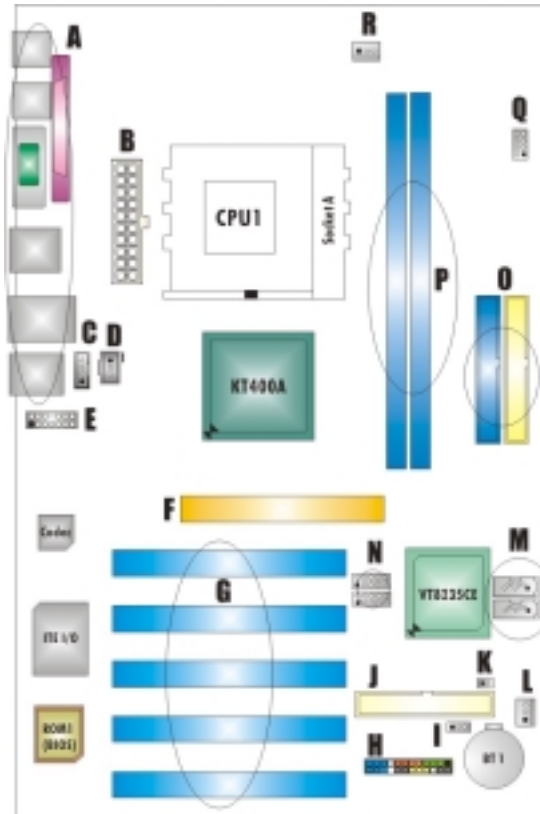
Layout of M7VIT Bravo



NOTE: ● represents the first pin.

M7VIT Bravo

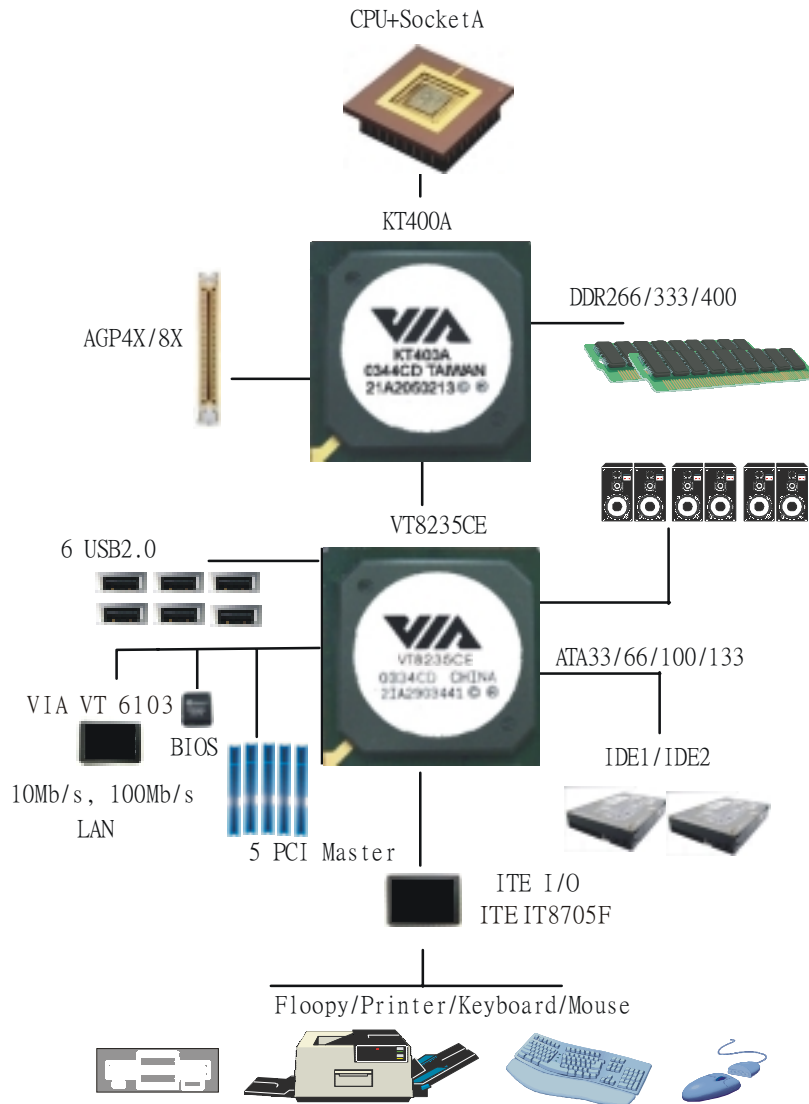
Component Index



- | | |
|--|------------------------------------|
| A. Back Panel Connector | J. Floppy Disk Connector:FDD1 |
| B. ATX Power Connector:ATX1 | K. Case Open Connector:JC1 |
| C. CD-ROM Audio-In Header:JCDIN1 | L. System FAN Header:JSFAN1 |
| D. Digital Audio Connector:JSPDIF1 | M. Serial ATA Connectors:JSATA1-2* |
| E. Front Audio Header:JAUDIO1 | N. Front USB Header:JUSB2/(JUSB3)* |
| F. Accelerated Graphics Port Slot:AGP1 | O. IDE Connectors:IDE1-2 |
| G. PCI BUS Slots:PCI 1-5 | P. DDR Modules:DDR1-2 |
| H. Front Panel Connector:JPANEL1 | Q. Frequency Selection:JCLK1 |
| I. Clear CMOS Function:JCMOS1 | R. CPU Fan Connector:JCFAN1 |
- * stands for "Optional."

M7VIT Bravo

M7VIT Bravo System Structure



M7VIT Bravo

English

M7VIT Bravo Features

A. Hardware

CPU

- Provides Socket A.
- Supports single AMD® Athlon XP/ Duron Family processor.
- Front Side Bus at 200/266/333 MHz.

Chipset

- North Bridge: VIA KT400A.
- South Bridge: VIA VT8235CE.

Main Memory

- Supports up to 2 DDR devices.
- Supports 266/333/400 MHz (without ECC) DDR devices.
- Maximum memory size is 2GB.

Super I/O

- Chip: U2 ITE8705F.
- Provides the most commonly used legacy Super I/O functionality.
- Environment Control initiatives,
 - H/W Monitor
 - ITE's "Smart Guardian" function

Slots

- Five 32-bit PCI bus master slots.
- One AGP 4X/8X slot.

On Board IDE

- Supports four IDE disk drives.
- Supports PIO Mode 4, Master Mode and Ultra DMA 33/66/100/133 Bus Master Mode.

LAN

- PHY: VIA VT6103.
- Supports 10 Mb/s and 100 Mb/s auto-negotiation
- Half/Full duplex capability.

On Board AC'97 Sound Codec

- Chip: CMI9761A.
- Compliant with AC'97 specification.
- Supports 6 channels.
- Supports stereo Microphone.

M7VIT Bravo

On Board Peripherals

a. Rearside

- 1 x serial port.
- 1 x parallel port. (SPP/EPP/ECP mode)
- 1x Audio ports in vertical position.
- 1 x RJ-45 LAN jack.
- 1 x PS/2 mouse and 1 x PS/2 keyboard.
- 4 x USB2.0 ports. (2 x USB2.0: Optional)

b. Front Side

- 1 floppy port supports 2 FDDs with 360K, 720K, 1.2M, 1.44M and 2.88Mbytes.
- 4 USB2.0 ports.
- 1 front audio header.
- 1 S/PDIF Out header. (Optional)

Dimensions

- ATX Form Factor: 19.1cm X 29.3cm (W X L)

B. BIOS & Software

BIOS

- Award legal BIOS.
- Supports APM1.2.
- Supports ACPI.
- Supports USB Function.

Software

- Supports Warpspeeder™, 9th Touch™, FLASHER™.
- Offers the highest performance for Windows 98 SE, Windows 2000, Windows Me, Windows XP, UNIX Series etc.

Package contents

- HDD Cable X 1
- FDD Cable X 1
- User's Manual X 1
- Fully Setup Driver CD X 1
- USB 2.0 Cable X 1 (optional)
- S/PDIF Cable X 1 (optional)
- Rear I/O Panel for ATX Case X 1 (optional)

M7VIT Bravo

How to set up Jumper

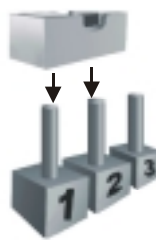
The illustration shows how to set up a jumper. When the Jumper cap is placed on pins, the jumper is "close". If no jumper cap is placed on the pins, the jumper is "open". The illustration shows a 3-pin jumper whose pin 1 and 2 are "close" when jumper cap is placed on these 2 pins.



Jumper open



Jumper close



Pin1-2 close

CPU Installation

Step1: Pull the lever sideways away from the socket and then raise the lever up to a 90-degree angle.

Step2: Look for the white dot/cut edge. The white dot/cut edge should point towards the lever pivot. The CPU will fit only in the correct orientation.

Step3: Hold the CPU down firmly, and then close the lever to complete the installation.

Step4: Put the CPU Fan on the CPU and buckle it. Connect the CPU fan power cable to the JCFAN1. Then the installation is completed.



Step1



Step2




Step3




Step4

M7VIT Bravo

CPU Fan Header: JCFAN1

 <p style="text-align: center;">JCFAN1</p>	Pin	Assignment
	1	Ground
	2	+12V
	3	FAN RPM rate Sense

System Fan Header: JSFAN1

 <p style="text-align: center;">JSFAN1</p>	Pin	Assignment
	1	Ground
	2	+12V
	3	FAN RPM rate Sense

DDR DIMM Modules: DDR1, DDR2

DRAM Access Time: 2.5V Unbuffered/ Registered DDR 266 MHz (PC2100)/
 DDR 333 MHz (PC2700)/ DDR 400 MHz (PC3200) Type required.
 DRAM Type: 64MB/ 128MB/ 256MB/ 512MB/ 1GB DIMM Module (184 pin)

DIMM Socket Location	DDR Module	Total Memory Size (MB)
DDR 1	64MB/128MB/256MB/512MB/1GB *1	Max is 2GB
DDR 2	64MB/128MB/256MB/512MB/1GB *1	

Only for reference

Installing DDR Module

1. Unlock a DIMM slot by pressing the retaining clips outward. Align a DIMM to the slot in the way that the notch of the DIMM matches the break of the slot.
2. Insert the DIMM vertically and firmly into the slot until the retaining chip snap back in place and the DIMM is properly seated.



M7VIT Bravo

Jumpers, Headers, Connectors & Slots

Floppy Disk Connector: FDD1

The motherboard provides a standard floppy disk connector that supports 360K, 720K, 1.2M, 1.44M and 2.88M floppy disk types. This connector supports the provided floppy drive ribbon cables.

Hard Disk Connectors: IDE1/ IDE2

The motherboard has a 32-bit Enhanced PCI IDE Controller that provides PIO Mode 0~4, Block Mode, Bus Master, and Ultra DMA 33/ 66/ 100/ 133 functionality. It has two HDD connectors IDE1 (primary) and IDE2 (secondary).

The IDE connectors can connect a master and a slave drive, so you can connect up to four hard disk drives. The first hard drive should always be connected to IDE1.

Peripheral Component Interconnect Slots: PCI 1-5

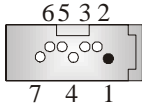
This motherboard is equipped with 5 standard PCI slots. PCI stands for Peripheral Component Interconnect, and it is a bus standard for expansion cards. This PCI slot is designated as 32 bits.

Accelerated Graphics Port Slot: AGP1

Your monitor will attach directly to that video card. This motherboard supports video cards for PCI slots, but it is also equipped with an Accelerated Graphics Port (AGP). An AGP card will take advantage of AGP technology for improved video efficiency and performance, especially with 3D graphics.

Serial ATA Connector: JSATA1/ JSATA2 (Optional)

The motherboard has a PCI to SATA Controller with 2 channels SATA interface, it satisfies the SATA 1.0 spec and can transfer data with 1.5 Gb/s speed.

 JSATA1/ JSATA2	Pin	Assignment	Pin	Assignment
	1	Ground	2	TX+
	3	TX-	4	Ground
	5	RX-	6	RX+
	7	Ground		

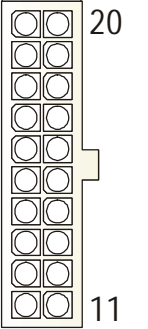
Note: 1. When plugging SATA HDD on JSATA1 connector, SATA BIOS will automatically detect as channel 1.
2. When plugging SATA HDD on JSATA2 connector, SATA BIOS will automatically detect as channel 0.

M7VIT Bravo

Front Panel Connector: JPANEL1





Pin	Assignment	Function	Pin	Assignment	Function
1	+5V	Speaker Connector	2	Sleep Control	Sleep Button
3	NA		4	Ground	
5	NA		6	NA	NA
7	Speaker		8	Power LED (+)	POWER LED
9	HDD LED (+)	10	Power LED (+)		
11	HDD LED (-)	12	Power LED (-)		
13	Ground	Reset Button	14	Power Button	Power-on Button
15	Reset Control		16	Ground	
17	NA		18	KEY	
19	NA	IrDA Connector	20	KEY	IrDA Connector
21	+5V		22	Ground	
23	IRTX		24	IRRX	

Power Connectors: ATX1

	PIN	Assignment	PIN	Assignment
 <p style="text-align: center;">ATX1</p>	1	+3.3V	11	+3.3V
	2	+3.3V	12	-12V
	3	Ground	13	Ground
	4	+5V	14	PS_ON
	5	Ground	15	Ground
	6	+5V	16	Ground
	7	Ground	17	Ground
	8	PW_OK	18	-5V
	9	Standby Voltage +5V	19	+5V
	10	+12V	20	+5V

M7VIT Bravo


Clear CMOS Jumper: JCMOS1

JCMOS1	Assignment
 1  3 Pin 1-2 Close	Normal Operation (default)
 1  3 Pin 2-3 Close	Clear CMOS Data

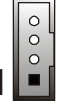
※ **Clear CMOS Procedures:**

1. Remove AC power line.
2. Set the jumper to "Pin 2-3 Close".
3. Wait for five seconds.
4. Set the jumper to "Pin 1-2 Close".
5. Power on the AC.
6. Reset your desired password or clear the CMOS data.


Case Open Connector: JCI1

 1 JCI1	Pin	Assignment
	1	Case Open Signal
	2	Ground

CD-ROM Audio-In Header: JCDIN1

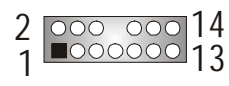
 1 JCDIN1	Pin	Assignment
	1	Left Channel Input
	2	Ground
	3	Ground
	4	Right Channel Input

Digital Audio Connector: JSPDIF1

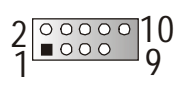
 1 JSPDIF1	Pin	Assignment
	1	+5V
	2	SPDIF_OUT
	3	Ground

M7VIT Bravo

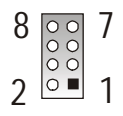
Front Panel Audio Header: JAUDIO1

			
Pin	Assignment	Pin	Assignment
1	Left stereo Mic In/ Center	2	Ground
3	Right stereo Mic In/ Bass	4	Audio Power
5	Right Line Out/ Speaker Out Right	6	Right Line Out/ Speaker Out Right
7	Reserved	8	Key
9	Left Line Out/ Speaker Out Left	10	Left Line Out/ Speaker Out Left
11	Right Line In/ Rear Speaker Right	12	Right Line In/ Rear Speaker Right
13	Left Line In/ Rear Speaker Left	14	Left Line In/ Rear Speaker Left

Front USB Header: JUSB2/ (JUSB3: Optional)

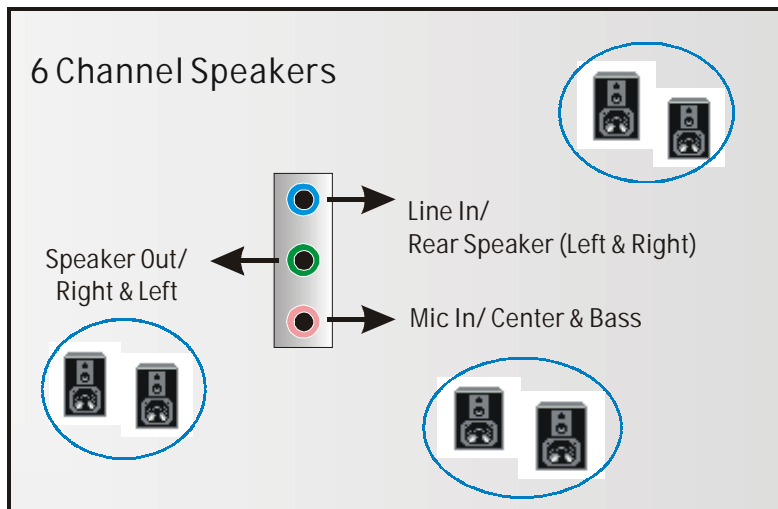
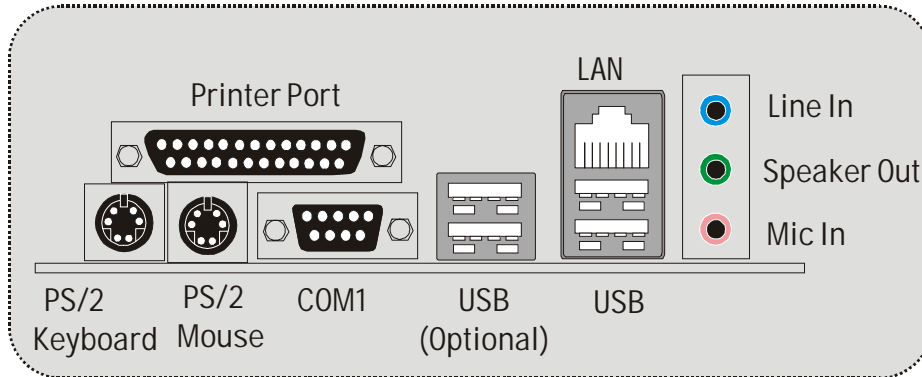
				
Pin	Assignment	Pin	Assignment	
1	+5V	2	+5V	
3	USB-	4	USB-	
5	USB+	6	USB+	
7	Ground	8	Ground	
9	KEY	10	NA	

Frequency Selection: JCLK1

				
Pin	100 MHz	133 MHz	166 MHz	
1-2	Open	Open	Close	
3-4	Close	Close	Close	
5-6	Close	Open	Open	
7-8	Open	Close	Close	

M7VIT Bravo

Back Panel Connectors



WarpSpeeder



Introduction

[WarpSpeeder™], a new powerful control utility, features three user-friendly functions including Overclock Manager, Overvoltage Manager, and Hardware Monitor.

With the Overclock Manager, users can easily adjust the frequency they prefer or they can get the best CPU performance with just one click. The Overvoltage Manager, on the other hand, helps to power up CPU core voltage and Memory voltage. The cool Hardware Monitor smartly indicates the temperatures, voltage and CPU fan speed as well as the chipset information. Also, in the About panel, you can get detail descriptions about BIOS model and chipsets. In addition, the frequency status of CPU, memory, AGP and PCI along with the CPU speed are synchronically shown on our main panel.

Moreover, to protect users' computer systems if the setting is not appropriate when testing and results in system fail or hang, [WarpSpeeder™] technology assures the system stability by automatically rebooting the computer and then restart to a speed that is either the original system speed or a suitable one.

System Requirement

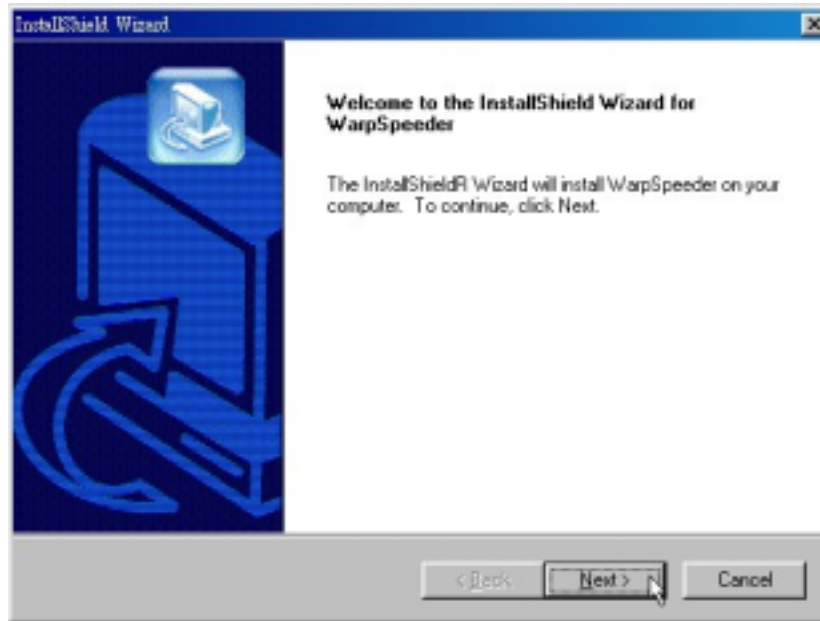
OS Support: Windows 98 SE, Windows Me, Windows 2000, Windows XP

DirectX: DirectX 8.1 or above. (The Windows XP operating system includes DirectX 8.1. If you use Windows XP, you do not need to install DirectX 8.1.)

M7VIT Bravo

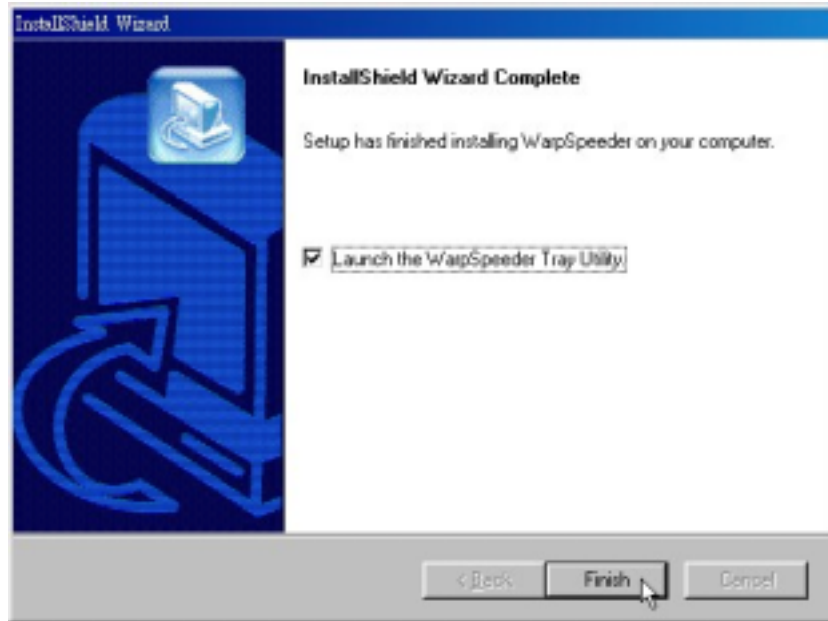
Installation

1. Execute the setup execution file, and then the following dialog will pop up. Please click “Next” button and follow the default procedure to install.



2. When you see the following dialog in setup procedure, it means setup is completed. If the “Launch the WarpSpeeder Tray Utility” checkbox is checked, the Tray Icon utility and [WarpSpeeder™] utility will be automatically and immediately launched after you click “Finish” button.

M7VIT Bravo



Usage

The following figures are just only for reference, the screen printed in this user manual will change according to your motherboard on hand.

[WarpSpeeder™] includes 1 tray icon and 5 panels:

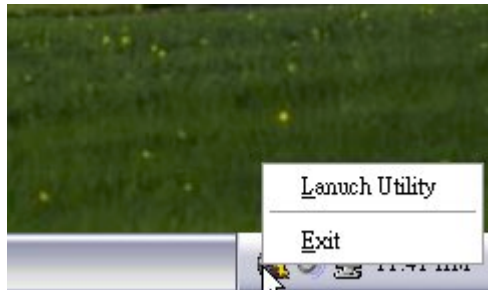
1. Tray Icon:

Whenever the Tray Icon utility is launched, it will display a little tray icon on the right side of Windows Taskbar.



M7VIT Bravo

This utility is responsible for conveniently invoking [WarpSpeeder™] Utility. You can use the mouse by clicking the left button in order to invoke [WarpSpeeder™] directly from the little tray icon or you can right-click the little tray icon to pop up a popup menu as following figure. The “Launch Utility” item in the popup menu has the same function as mouse left-click on tray icon and “Exit” item will close Tray Icon utility if selected.



2. Main Panel

If you click the tray icon, [WarpSpeeder™] utility will be invoked. Please refer do the following figure; the utility's first window you will see is Main Panel.

Main Panel contains features as follows:

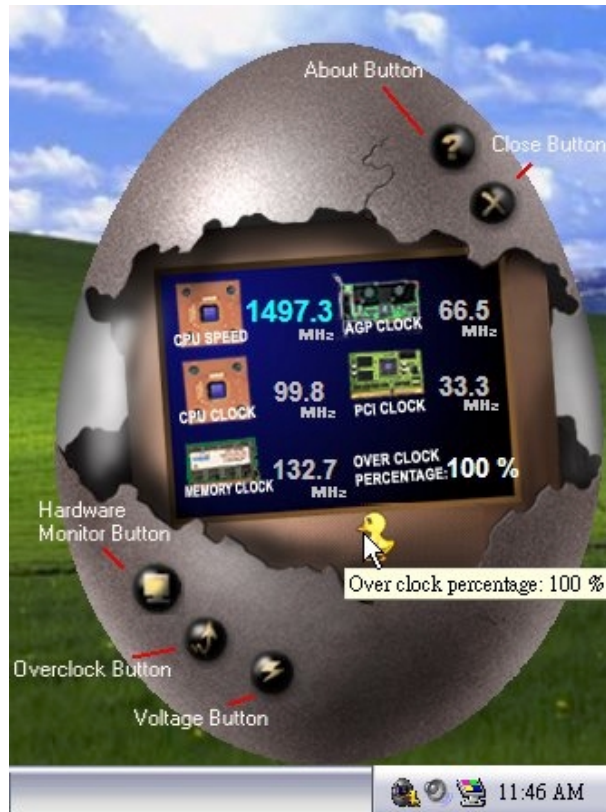
- a. Display the CPU Speed, CPU external clock, Memory clock, AGP clock, and PCI clock information.
- b. Contains About, Voltage, Overclock, and Hardware Monitor Buttons for invoking respective panels.
- c. With a user-friendly Status Animation, it can represent 3 overclock percentage stages:

Man walking => overclock percentage from 100% ~ 110 %

Panther running => overclock percentage from 110% ~ 120%

Car racing => overclock percentage from 120% ~ above

M7VIT Bravo



3. Voltage Panel

Click the Voltage button in Main Panel, the button will be highlighted and the Voltage Panel will slide out to up as the following figure.

In this panel, you can decide to increase CPU core voltage and Memory voltage or not. The default setting is "No". If you want to get the best performance of overclocking, we recommend you click the option "Yes".

M7VIT Bravo



4. Overclock Panel

Click the Overclock button in Main Panel, the button will be highlighted and the Overclock Panel will slide out to left as the following figure.

M7VIT Bravo



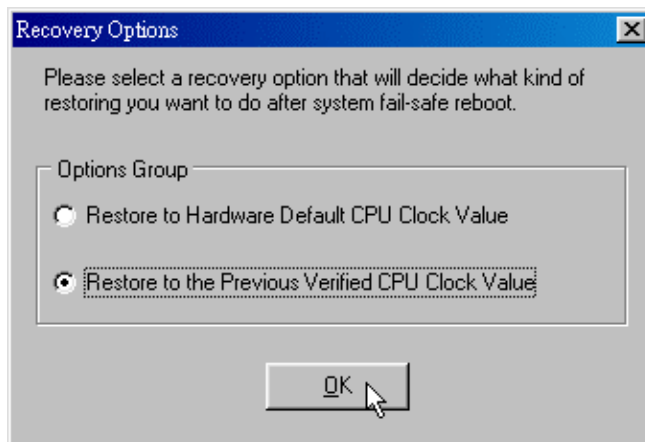
Overclock Panel contains the these features:

- a. “-3MHz button”, “-1MHz button”, “+1MHz button”, and “+3MHz button”: provide user the ability to do real-time overclock adjustment.

Warning: Manually overclock is potentially dangerous, especially when the overclocking percentage is over 110 %. We strongly recommend you verify every speed you overclock by click the Verify button. Or, you can just click Auto overclock button and let [WarpSpeeder™] automatically gets the best result for you.

- b. “Recovery Dialog button”: Pop up the following dialog. Let user select a restoring way if system need to do a fail-safe reboot.

M7VIT Bravo



- d. “Auto-overclock button”: User can click this button and [WarpSpeeder™] will set the best and stable performance and frequency automatically. [WarpSpeeder™] utility will execute a series of testing until system fail. Then system will do fail-safe reboot by using Watchdog function. After reboot, the [WarpSpeeder™] utility will restore to the hardware default setting or load the verified best and stable frequency according to the Recovery Dialog's setting.
- e. “Verify button”: User can click this button and [WarpSpeeder™] will proceed a testing for current frequency. If the testing is ok, then the current frequency will be saved into system registry. If the testing fail, system will do a fail-safe rebooting. After reboot, the [WarpSpeeder™] utility will restore to the hardware default setting or load the verified best and stable frequency according to the Recovery Dialog's setting.

Note: Because the testing programs, invoked in Auto-overclock and Verify, include DirectDraw, Direct3D and DirectShow tests, the DirectX 8.1 or newer runtime library is required. And please make sure your display card's color depth is High color (16 bit) or True color(24/32 bit) that is required for Direct3D rendering.

M7VIT Bravo

5. Hardware Monitor Panel

Click the Hardware Monitor button in Main Panel, the button will be highlighted and the Hardware Monitor panel will slide out to left as the following figure.

In this panel, you can get the real-time status information of your system. The information will be refreshed every 1 second.

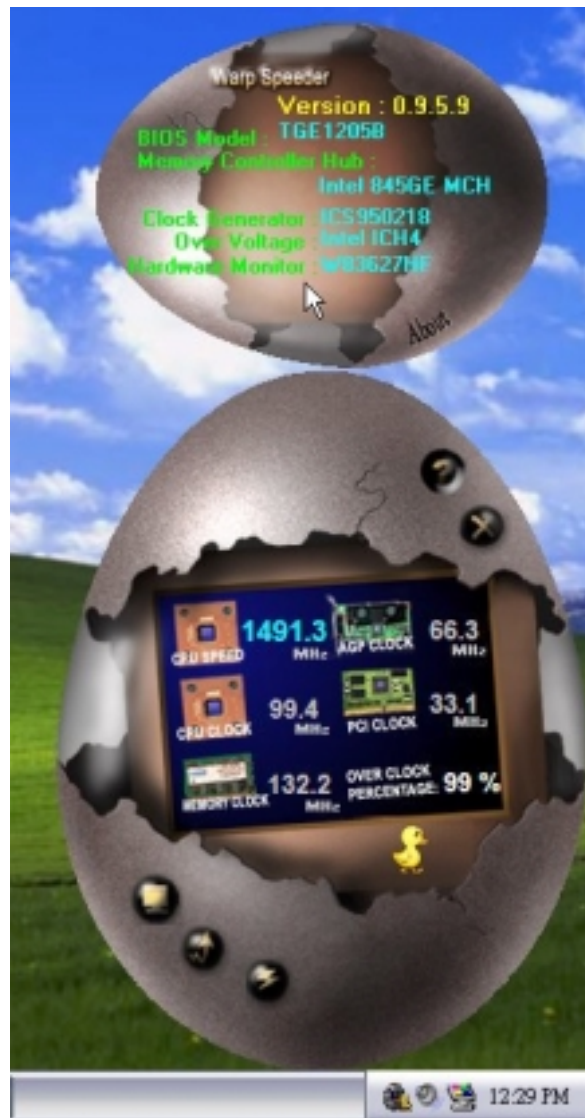


6. About Panel

Click the About button in Main Panel, the button will be highlighted and the About Panel will slide out to up as the following figure.

In this panel, you can get model name and detail information in hints of all the chipset that are related to overclocking. You can also get the mainboard's BIOS model and the Version number of [WarpSpeeder™] utility.

M7VIT Bravo



Note: Because the overclock, overvoltage, and hardware monitor features are controlled by several separate chipset, [WarpSpeeder™] divide these features to separate panels. If one chipset is not on board, the correlative button in Main panel will be disabled, but will not interfere other panels' functions. This property can make [WarpSpeeder™] utility more robust.

M7VIT Bravo

Trouble Shooting

PROBABLE	SOLUTION
No power to the system at all Power light don't illuminate, fan inside power supply does not turn on. Indicator light on keyboard does not turn on	* Make sure power cable is securely plugged in * Replace cable * Contact technical support
System inoperative. Keyboard lights are on, power indicator lights are lit, hard drive is spinning.	* Using even pressure on both ends of the DIMM, press down firmly until the module snaps into place.
System does not boot from hard disk drive, can be booted from CD-ROM drive.	* Check cable running from disk to disk controller board. Make sure both ends are securely plugged in; check the drive type in the standard CMOS setup. * Backing up the hard drive is extremely important. All hard disks are capable of breaking down at any time.
System only boots from CD-ROM. Hard disk can be read and applications can be used but booting from hard disk is impossible.	* Back up data and applications files. Reformat the hard drive. Re-install applications and data using backup disks.
Screen message says "Invalid Configuration" or "CMOS Failure."	* Review system's equipment . Make sure correct information is in setup.
Cannot boot system after installing second hard drive.	* Set master/slave jumpers correctly. * Run SETUP program and select correct drive types. Call drive manufacturers for compatibility with other drives.

M7VIT Bravo

12/26/2003