

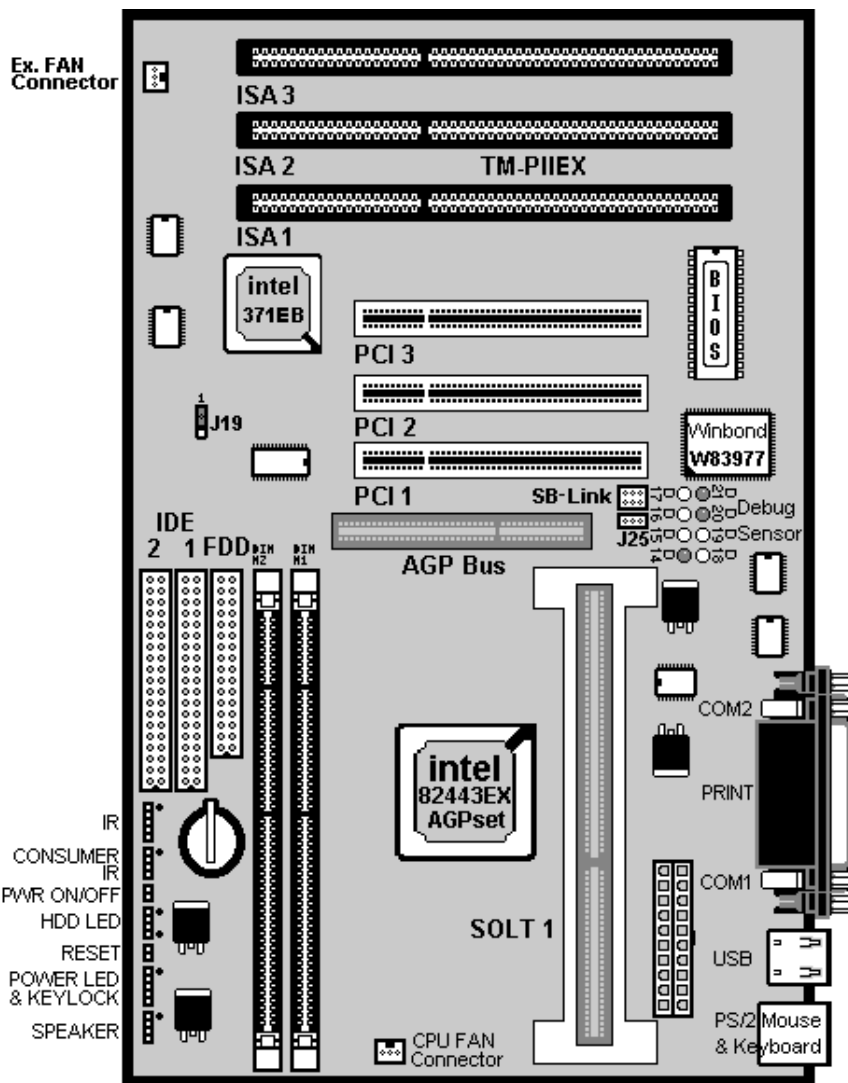
Introduction

A. Specifications

System Chipset	Intel 82440 EX chipset.
CPU	Intel Pentium II processors, support 233 / 266/ 300/ 333/ 366 MHz.
Memory	Expandable to 256MB (2 banks) with three 168-pin DIMM socket (support 3.3 V SDRAM RAM).
I/O	Winbond 83977, two high speed 16550 compatible serial ports, one Multi-Mode. Parallel Port support SPP/EPP/ECP standard mode. Two onboard PCI IDE Ports (32 bit data transfer). LS-120/ ZIP FDD, IrDA/ ASK IR/ Consumer IR. Dual USB ports Support two 360/720KB/1.2/1.44/2.88MB floppy disk devices. One PS/2 Mouse port.
BIOS	Award System BIOS installed in socket (Flash and PnP).
Expansion slots	One AGP slot, three PCI Master Slots and three 16-bit ISA Slots.
Voltage	Auto 1.8V-3.5V
Dimension	4-layer PCB, size (300mm x 190mm).
Others	Support BIOS setting CPU type (Jumper-less), CPU Auto Temperature Sensor & Music Alarm, voltage monitor and CPU Fan monitor , Bus Master/ Ultra DMA/33, ACPI, AGP Bus, Keyboard Power On, PS/2 Mouse Power On, Modem Ring On, LAN Wake-Up, Debug sensor on board.

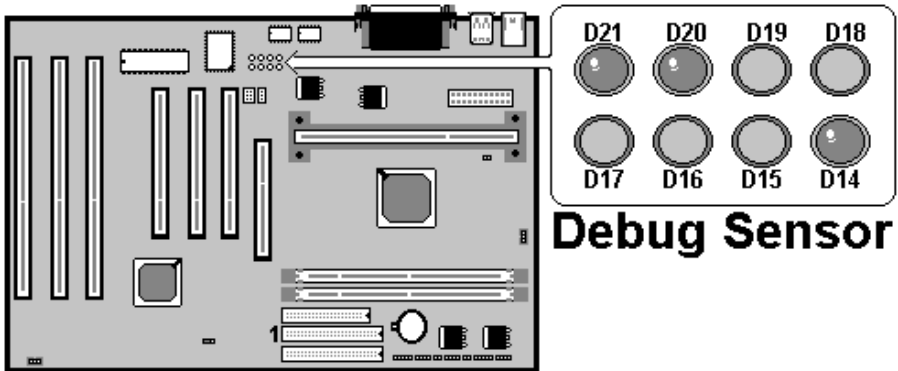
Setup Guide

A. Layout Diagram



B. Smart Debug On Board

When the CPU, DRAM, Cache RAM, FDD or VGA card have not been properly installed, user can isolate those basic problems through the Debug Sensor LED and instructions from the manual. To Professional system engineers or maintenance engineers, the Debug Sensor can work as an 80 Port Debug Sensor Card.



Error code	Display	Message	Solution	
D21 ●●●○D18 D17○○○D14	C1	None	Can't detect DRAM	1. Reinstall or replace the SDRAM. 2. Reinstall or replace the BIOS.
D21 ●●●○D18 D17○○○D14	C6	None	Can't detect DRAM	1. Reinstall or replace the SDRAM. 2. Reinstall or replace the BIOS.
D21 ○○○○D18 D17●●●D14	OD	None	Can't detect VGA card	1. Reinstall or replace the VGA card. 2. Replace the BIOS.
D21 ●●●○D18 D17●●●D14	4E	Yes	Can't detect Floppy disk	1. Replace the BIOS. (if no screen) 2. Enter the BIOS Setup menu to reset. 3. Check that the FDD cable and the power connector are properly connected. 4. Reconnect the FDD cable or replace the FDD.
D21 ●●●○D18 D17○○○D14	61	Yes	L2 cache problem	1. Enter BIOS Setup to disable the external cache.

C. Note to Installing the Mainboard

Touch the non-coated area on the computer case or use a grounded wire to

TM-P2EX User's Manual

release static electricity before you open the anti-static electricity bag and take out the mainboard. It's likely to damage the mainboard components while taking out the board without first releasing static electricity. During installation, avoid touching the components on the mainboard.

D. CPU Voltage and Frequencies

ROM PCI/ISA BIOS (2A69JTJC)	
CHIPSET FEATURE SETUP	
AWARD SOFTWARE, INC	
Auto Configuration : Enabled	CPU Speed : Manual
DRAM Speed Selection : 60ns	CPU Ratio : X 3.5
MA Wait State : Slow	CPU Frequency : 66 MHz
EDO RAS# To CAS# Delay : 3	Auto Detect DIMM/ PCI Clk : Enabled
EDO RAS# Precharge Time : 3	Spread Spectrum : Disabled
EDO DRAM Read Burst : x333	CPU Warning Temperature : Disabled
EDO Dram Write Burst : x222	Current CPU Temperature : 28°C/ 82°F
CPU-To-PCI IDE Posting : Enabled	Current SYSFAN Speed : 4285 RPM
System BIOS Cacheable : Enabled	Current CPUFAN Speed : 4000 RPM
Video BIOS Cacheable : Enabled	Current Vin3 (V) : 2.88V
Video RAM Cacheable : Disabled	
8 Bit I/O Recovery Time : 1	
16 Bit I/O Recovery Time : 1	
Memory Hole At 15M-16M : Disabled	
Passive Release : Enabled	
Delayed Transaction : Enabled	
AGP Aperture Size (MB) : 64	
SDRAM RAS-to CAS Delay : Slow	
SDRAM RAS Precharge : Slow	
Time : 3	
SDRAM CAS latency Time	
	Esc : Quit ↑↓→← Selection: Item F1 : Help PU/PD/+/-: Modify F5 : Old Values (Shift) F2: Color F6 : Load BIOS Default F7 : Load Setup Default

Dear Customers:

Thank you for your patronage of our products. The board you bought is a **jumper-less** mainboard. The ratio and frequency of the CPU shall be set in BIOS and the working voltage for the CPU shall be automatically detected. Please read carefully the following instructions:

1. Power on the installed system and press the "DEL" key to enter BIOS Setup. Select "Chipset Features Setup" and press <Enter>.
2. Select "CPU Speed" and press "PgUp" or "PgDn" to set the CPU ratio and frequency. The available options are: Intel PII 233MHz (66X3.5), 266MHz

TM-P2EX User's Manual

(66X4), 300MHz (66X4.5), 333MHz (66X5), 366MHz (66X5.5) and "Manual".

To set the CPU manually, please note the following:

CPU Speed: "Manual" (you can manually set the CPU ratio and frequency)

CPU Ratios: x3.5, x4, x4.5, x5, x5.5

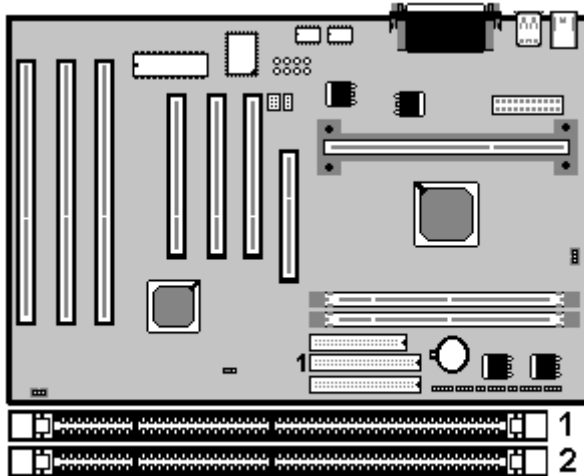
CPU Frequency: 50MHz, 66MHz, 68MHz, 75MHz, 83MHz

Several options are provided for the CPU external clock. You are recommended to restore to the default setting in case of instability when the external clock exceeds 66MHz.

NOTE: System failure may occur if the CPU frequency is set incorrectly. To solve this problem. Press the "Insert" key on the keyboard to clear the previously set frequency (i. e., restore the default frequency), and then reboot the system.

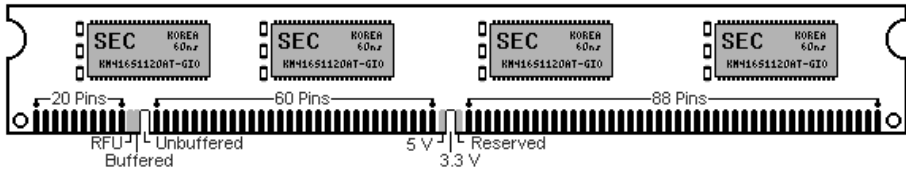
- Switch voltage is applied, making the temperature lower and voltage steadier.
- You don't need to adjust Voltage in Pentium II mainboard. It will automatically send out one VID(Voltage Identification) to the mainboard power supply to ask for the voltage it needs.
- The CPU type default setting is Intel Pentium II 266MHz=66 MHz * 4.

E. EDO/ SDRAM Installation Procedures:

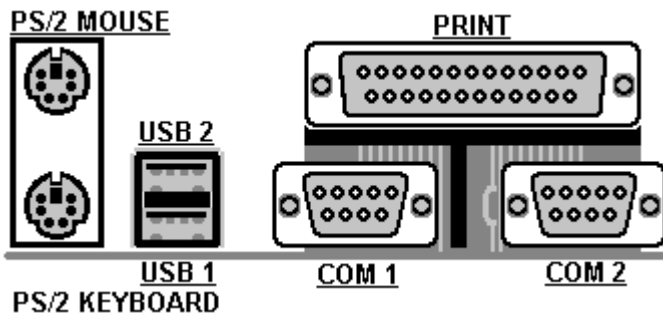


- A 168-pin DIMM can support up to 256MB 3.3V EDO/ SDRAM.
- Default setting: 3.3V. (Only)
- To avoid compatibility and reliability problems, you are recommended to test the 168-pin SDRAMs before buying them since the PCB specifications differ.
- First, verify the working voltage of the EDO/ SDRAM module in either DIMM socket.
- P2LX only supports 3.3V EDO/ SDRAM module. The following illustration shows you the difference between 3.3V and 5V to ensure your correct selection of 3.3V DIMM module for using.
- You can set up the BIOS “Chipset Feature Setup” to the best working condition basing on the type of EDO/ SDRAM you are using.
- The BIOS DRAM default setting is 60 ns. Change the BIOS “Chipset Feature Setup” default setting to 50ns for better performance, if the chipset is marked 50ns.

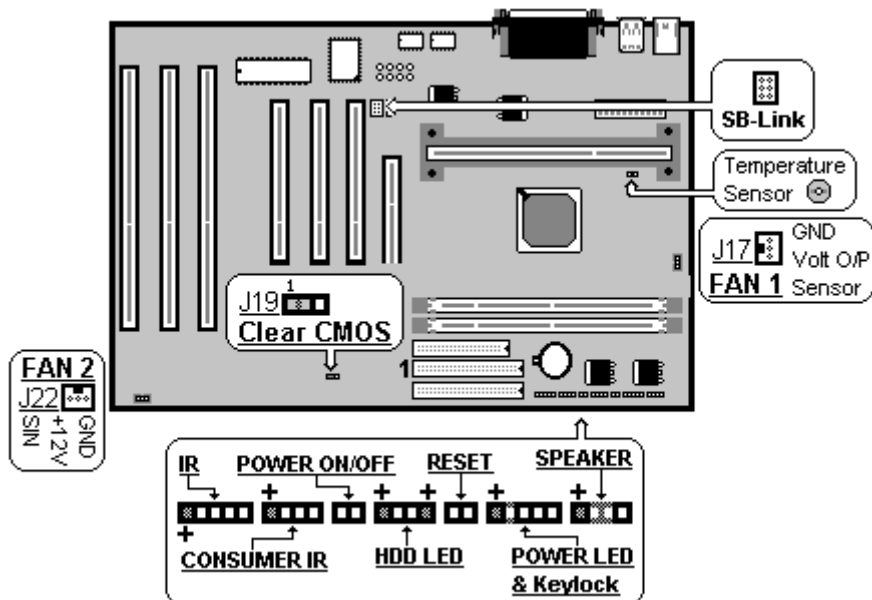
- Change nothing if EDO RAM is used. BIOS automatically detects the RAM type.
- MEMO for Installing System:
 - ⊕ Concerning memory setup, you can find how to from “**Chipset Feature Setup**” under BIOS setup. However, to avoid system unstable or system hang, user without engineering background is not suggested to change BIOS set up.
 - ⊕ If system boot failure, please clean DIMM socket (**with clean oil**) or polish **Gold-Finger** of DRAM with **soft eraser**, and try again.
- The Dual Inline Memory Module (DIMM) must be 3.3 Volt and Unbuffered Synchronous DRAM (SDRAM) 8MB, 16MB, 32MB, 64MB, 128MB or 256MB. The following illustration shows the type of DIMM Module.



168-PIN SDRAM DIMM Notch Key Definitions



F. Other Jumper Settings



- **Speaker:**
Connect to the system's speaker for beeping.
- **Keylock:**
Keyboard lock switch and Power LED connector.
- **Reset:**
Short to restart system.
- **HDD LED:**
LED ON when on board PCI IDE hard disk activates.
- **POWER SW (FOR ATX POWER SUPPLY):**
The button should be a momentary switch that is normally open. Pushing the ATX Power Switch will immediately change the system status. Before or during "POST", you need to hold the button for four seconds in order to turn off the system.
- **J19: Clear CMOS**

Turn off the system and short pins 2-3 to clear CMOS. Then short pins 1-2 before turning it on.

J19	
1-2	Normal operation(Default).
2-3	for clearing CMOS Data.

- **CPU Cooler Fan connector**

This is the connector for CPU cooler. Never use the jumper to short the connector. Serious damages caused this way will not be warranted.

- **Creative SB-Link**

It is used to connect the AWE64 or other compatible sound cards so that they are made compatible with the ISA-compatible SB16 sound cards.

G. Note to BIOS Update

Do not update the BIOS if no abnormalities occur. However, if BIOS update is needed, consult your dealer first. Prior to updating your BIOS, you are recommended to save the original BIOS values.

1. Download the AWARD BIOS Flash Utility file (**Awdflash.exe**)
2. Download the BIOS file used by your mainboard(e.g., **EXV110N.BIN**)
3. **Reboot** your system (but do not run **Himem.sys** and **Emm386.exe**) to execute the new BIOS program.
4. Execute these commands: **Awdflash EXV110N.BIN**
5. When this message displays: "**Do you want to save BIOS (Y/N)?**"
Type "**N**"
6. When this message displays: "**Are you sure to program (Y/N)?**"
Type "**Y**"
7. **Turn off** power to your system to clear the CMOS data.
8. Turn on the power to test if your system is running normal.

H. Keyboard/ PS/2 Mouse Power On and MODEM Ring on

- To make sure the 5VSB signal nearly to 750mA (Amperage) from ATX Power Supply, or if your keyboard consuming power than 300mA, it's better to upgrade your ATX Power Supply to 1A for working perfectly.
- If you are going to use the function of keyboard and PS/2 mouse power on, then, the power-switch will be becoming useless automatically (unable to be used).

ROM PC/ISA BIOS (2A69JTJC)

INTEGRATED PERIPHERALS

AWARD SOFTWARE, INC.

IDE HDD Block Mode	: Enabled	Onboard Serial Port 2	: 2F8H / IRQ3
IDE Primary Master PIO	: AUTO	UART Mode Select	: Normal
IDE Primary Slave PIO	: AUTO		
IDE Secondary Master PIO	: AUTO	Onboard Parallel Port	: 378H/IRQ 7
IDE Secondary Slave PIO	: AUTO	Parallel Port Mode	: ECP+EPP
IDE Primary Master UDMA	: AUTO	ECP Mode Use DMA	: 3
IDE Primary Slave UDMA	: AUTO	EPP Mode Select	: EPP 1.7
IDE Secondary Master	: AUTO		
UDMA			
IDE Secondary Slave UDMA	: AUTO		
On-Chip Primary PCI IDE	: Enabled		
On-Chip Secondary PCI IDE	: Enabled		
USB Keyboard Support	: Disabled		
Init Display First	: AGP		
POWER ON Function	: Hot KEY		
Hot Key Power ON	: Ctrl-F12	Esc : Quit	↑↓→← Selection: Item
KBC input clock	: 8MHz	F1 : Help	PU/PD/+/-: Modify
Onboard FDC Controller	: Enabled	F5 : Old Values	(Shift)F2: Color
Onboard Serial Port 1	: 3F8H / IRQ4	F6 : Load BIOS Default	
		F7 : Load Setup Default	

Hot KEY	When user select this option, it will show another line lines as Hot Key Power ON: Ctrl-F(1/2/3/4/5/6/7/8/9/10/11/12) select any you like. After power off, if user key in the "Ctrl-F?", it will power on the system.
PS/2 Mouse Left	It will power on the system by PS/2 mouse left.
PS/2 Mouse Right	It will power on the system by PS/2 mouse Right.

TM-P2EX User's Manual

Button Only	Only the power button can power on the system.
-------------	--

- **Modem Ring On Function Operation:**

ROM PCI / ISA BIOS (2A69JTJC) POWER MANAGEMENT SETUP AWARD SOFTWARE, INC	
Power Management : User Define PM Control by APM : Yes Video Off Method : DPMS Video Off After : Standby MODEM Use IRQ : 3 Doze Mode : Disabled Standby Mode : Disabled Suspend Mode : Disabled HDD Power Down : Disabled Throttle Duty Cycle : 62.5% PCI/ VGA Act-Monitor : Disabled Soft-Off by PWR-BTTN : Instant-Off PowerOn by Ring : Enabled Wake Up On LAN : Disabled IRQ 8 Break Suspend : Disabled	** Reload Global Timer Events ** IRQ[3-7, 9-15], NMI : Enabled Primary IDE 0 : Disabled Primary IDE 1 : Disabled Secondary IDE 0 : Disabled Secondary IDE 1 : Disabled Floppy Disk : Disabled Serial Port : Enabled Parallel Port : Disabled Esc : Quit ↑↓→← Selection: Item F1 : Help PU/PD/+/-: Modify F5 : Old Values (Shift) F2: Color F6 : Load BIOS Default F7 : Load Setup Default

1. Have an external MODEM connected to COM 1 or COM 2.
2. Enter BIOS setup.
3. Select Power Management Setup.
- 4. This number of MODEM use IRQ has to be set as same as the IRQ of Serial Port which you are connecting in. Please set in N/A if you are not going to use the function of MODEM ring on.**
- 5. PowerOn by Ring: Enable.**
6. Save BIOS setup and Reboot.
7. Booting from DOS, Windows, or Windows 95.
8. Turn off the system by:
 - a. ATX-Power Switch
 - b. Windows 95 Software Power Off
9. System Waiting for Modem Ring On
 When Modem Ringing Signal Active, System will wake-up.

I. System Health Monitor



- **Fan Monitoring:**
There are two fan connectors, one is for CPU, the other can be a housing fan. When the fans speed is working abnormal, there will be warning (**Speaker Alarm**) through application software such as SM10(Small Icon for System Monitoring) to notify user. The fan monitoring function is implemented by connecting fan to 3-pin fan connector FAN1/ FAN2 and installing SM10. Referring to Page 12 (System Health Monitor).
- **CPU Thermal Protection:**
TM-P2EX implements special thermal protection circuits. When

temperature is higher than a predefined value, there will be warning (Speaker Alarm) through application software such as SM10 (Small Icon for System Monitor) to notify user. It's automatically implemented by BIOS or SMD10, no hardware installation is needed. Referring to Page12 (System Health Monitor).

This mainboard also reserves an option to use special CPU cooling Fan. With **Thermal Sensor** on it. The CPU thermal sensor should be connected to **J16**.

- **System Voltage Monitoring:**

TM-P2EX is featured with a voltage monitoring system. When you turn on your system, this smart design will keep on monitoring your system working voltage. If any of voltage is over the component's standard, there will be Speaker Alarm though application software SM10 (Small Icon For Syatem Monitor) for a warning to user. System voltage monitoring function monitors 5V, 12V, 3.3V and CPU voltage. It's automatically implemented by BIOS and SM10, no hardware installation is needed. Referring to Page 12 (System Health Monitor)