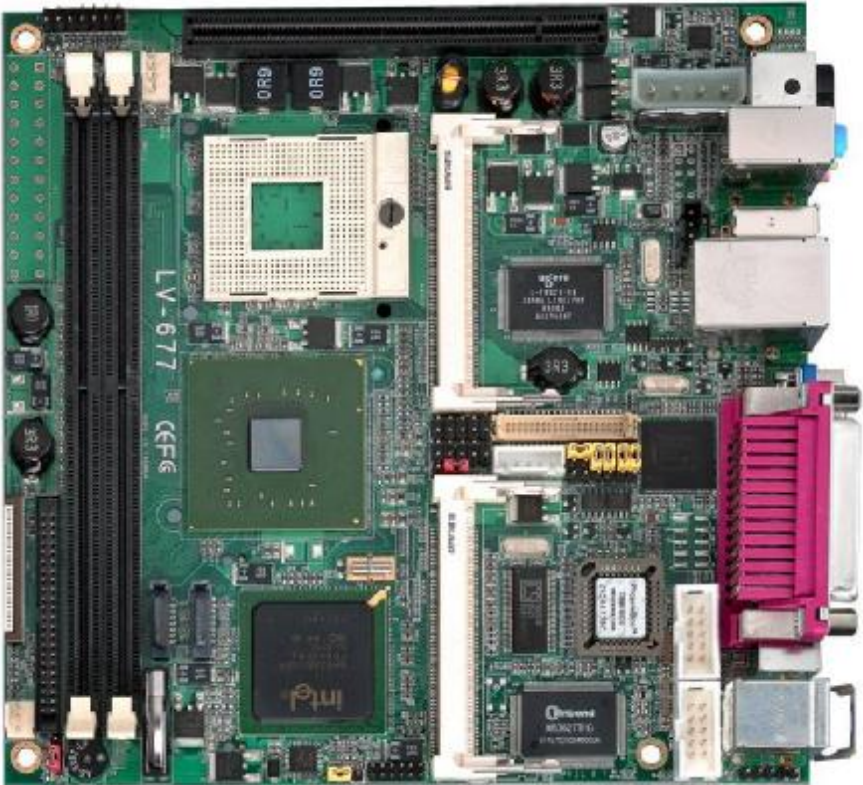


LV-677

Test Report

Edition 1.0

2006/09/06



Test Engineer :

Identify:

Index

Index	2
1. Function test	4
1.1 Hardware function.....	4
1.2 BIOS function	6
1.3 Driver.....	7
2. Compatibility test.....	9
2.1 CPU Test	9
2.2 Memory Test	10
2.3 VGA Graphic Test	11
2.4 Audio Test.....	12
2.5 HDD Test	12
2.6 CD-ROM Test	13
2.7 USB Test	13
2.8 Serial Port Test	14
2.9 Keyboard 、 Mouse Test	15
2.10 LAN Test.....	16
2.11 Power Supply Test	17
2.12 Floppy Drive Test	18
2.13 Boot Up Test	19
2.14 Os Install	19
2.15 Print Port Test	20
3. Environmental test	21
3.1 Temperature Test	21
4. Reliability Test.....	22
4.1 Power Consumption Test	22
4.2 LV-677(DC) Power Consumption Test	27
4.3 Thermal measurements at various points on the board.....	32

5. Performance Test	33
5.1 Win Bench 99	33
5.2 Win Stone 99 Version 1.1	34
5.3 Business Win Stone	35
5.4 Content Creation Winstone	37
5.5 3D MARK	38
5.6 3D MARK2006.....	39
5.7 PC MARK2002	40
5.8 PC MARK2004	40
5.9 PC MARK2005	41

1. Function test

1.1 Hardware function

Base Function Test

1	Power Button	Pass
2	Reset	Pass
3	Power LED	Pass
4	HDD LED	Pass
5	IDE Primary Master	Pass
6	IDE Primary Slave	Pass
7	SATA	Pass
8	DIMM	Pass
9	Floppy	Pass
10	Keyboard	Pass
11	Mouse	Pass
12	VGA Port	Pass
13	AUDIO Port	Pass
14	COM Port	Pass
15	USB Port	Pass
16	Giga LAN	Pass
17	PCI Express X 16	Pass
18	Mini PCI	Pass
19	IrDA	Pass
20	SPDIF	Pass
21	TV Out	Pass
22	Digital I/O	Pass
23	LVDS	Pass

24	CPUFAN	Pass
25	SYSFAN	Pass

Jumper

1	JRTC	Pass
2	JCFSEL	Pass
3	JVLCD	Pass

1.2 BIOS function

Item	Description	Result	Remark
1	Press 'Del' to run Setup Utility	Pass	
2	Ctrl-Alt-Del – Soft-Reboot	Pass	
3	Save & Exit Setup	Pass	
4	Date & Time Setting	Pass	
5	Drive A	Pass	
6	Hard Disk Boot Priority	Pass	
7	Quick Power On Self Test	Pass	
8	Boot Device Setting	Pass	
9	Boot Up Floppy Seek	Pass	
10	Boot Up Num Lock Status	Pass	
11	VGA Control	Pass	
12	On Chip Frame Buffer Size	Pass	
13	Boot Display	Pass	
14	On Chip Primary IDE	Pass	
15	On Chip Serial ATA	Pass	
16	USB Controller	Pass	
17	USB 2.0 Controller	Pass	
18	USB Keyboard Support	Pass	
19	Azalia Audio	Pass	
20	Onboard LAN1 Control	Pass	
21	POWER ON Function	Pass	
22	Onboard FDC Controller	Pass	
23	PWRON After PWR-Fail	Pass	
24	Watch Dog Timer Select	Pass	

25	ACPI Function	Pass	
26	ACPI Suspend Type	Pass	
27	Soft-Off by PWRBTN	Pass	
28	Wake-Up On LAN.	Pass	
29	Power On by Ring	Pass	
30	Resume by Alarm	Pass	
31	Init Display First	Pass	
32	CPU Warning Temperature	Pass	

1.3 Driver

3. Windows XP Driver Test

Item	Description	Result	Remark
1	Chipset Driver	Pass	
2	VGA Driver	Pass	
3	Audio Driver	Pass	
4	LAN Driver	Pass	

4. Windows Server 2003 Driver Test

Item	Description	Result	Remark
1	Chipset Driver	Pass	
2	Audio Driver	Pass	
3	LAN Driver	Pass	

2. Compatibility test

2.1 CPU Test

CPU	Operating System	Result	Remark
Yonah T2600 /2M/ 2.16 GHZ	Windows XP	Pass	
Yonah T2500 /2M/ 2.0 GHZ	Windows XP	Pass	
	Windows Server 2003	Pass	
Yonah T2400 /2M/ 1.83 GHZ	Windows XP	Pass	
	Fedora	Pass	
Yonah Celeron M410 /1M/ 1.46 GHZ	Windows XP	Pass	
	Windows Server 2003	Pass	
Yonah T1300 /2M/ 1.66 GHZ	Windows XP	Pass	
	Windows Server 2003	Pass	

2.2 Memory Test

DDRII DRAM	DDRII Freq	Capacity Mbytes	Operating System	Result
SAMSUNG (K4T51083QB-GCD5)	DDRII 533	1GB	WinXP、Server2003	PASS
Apacer1 (HYB18T512)	DDRII 533	1GB	WinXP、Server2003	PASS
Kingston (E5108AE-6E-E)	DDRII 533	1GB	WinXP、Server2003	PASS
Transcend (E1108AA)	DDRII 533	2GB	WinXP、Server2003	PASS
Kingston (HY5PS12821B)	DDRII 533	1GB	WinXP、Server2003	PASS
ADATA (E5108AB-6E-E)	DDRII 667	1GB	WinXP、Server2003	PASS
ADATA (AD2960BABA-3EG)	DDRII 667	1GB	WinXP、Fedora	PASS

2.3 VGA Graphic Test

1. Windows XP

Item	Description	Result	Remark
1	Resolution/Color Change	Pass	
2	CRT Display Test	Pass	
3	CRT Display Quality Test	Pass	
4	LVDS Display Test	Pass	
5	Extended Display Test	Pass	

2. Windows Server 2003

Item	Description	Result	Remark
1	Resolution/Color Change	Pass	
2	CRT Display Test	Pass	
3	CRT Display Quality Test	Pass	
4	LVDS Display Test	Pass	
5	Extended Display Test	Pass	

PCI Express VGA Card

VGA Card	Operating System	Result	Remark
ASUS EN5750 128MB	Windows sever 2003 · XP	Pass	
ASUS EN68.00GT /2DT/256M	Windows sever 2003 · XP	Pass	
ELSA AT1x1300/256MD2	Windows XP	Pass	

2.4 Audio Test

1. Windows XP

Item	Description	Result	Remark
1	Sound Effect	Pass	
2	Equalizer	Pass	
3	Microphone	Pass	
4	5.1 channel test	Pass	

2. Windows Server 2003

Item	Description	Result	Remark
1	Sound Effect	Pass	
2	Equalizer	Pass	
3	Microphone	Pass	
4	5..1 channel test	Pass	

2.5 HDD Test

HDD Type	Operating System	HDD Size Detect	HDD Data Transfer	HDD LED Check
Fujitsu MHT2080BH 80G(SATA)	MS-DOS	PASS	PASS	PASS
Western Digital WD800BB-22JHCO 80GB	WinServer2003	PASS	PASS	PASS
Maxtor 6Y120M0 120GB (SATA)	Win XP	PASS	PASS	PASS

2.6 CD-ROM Test

CD-ROM Type	Operating System	CD-ROM Detect	CD-ROM Data Transfer	PLAY DVD
ASUS CD-S400/A	WinServer2003	PASS	PASS	
TEAC CD-S40E	Win XP	PASS	PASS	
CANDY DW-224E		PASS	PASS	PASS

2.7 USB Test

1. Windows XP

Item	Description	Result	Remark
1	Device Manager Check	Pass	
2	External USB Keyboard Test	Pass	
3	External USB Mouse Test	Pass	
4	Hot plugging test	Pass	

2. Windows Server 2003

Item	Description	Result	Remark
1	Device Manager Check	Pass	
2	External USB Keyboard Test	Pass	
3	External USB Mouse Test	Pass	
4	Hot plugging test	Pass	

2.8 Serial Port Test

1. MS-DOS

Item	Description	Result	Remark
1	RS-232 Mouse Test	Pass	
2	RS-232 Modem Test	Pass	
3	B&B Electronics COM Port RS-232 Test (W/Loop-Back)	Pass	
4	PC CHECK COM Port RS-232 Test (W/Loop-Back)	Pass	

2. Windows Server 2003

Item	Description	Result	Remark
1	Device Manager Check	Pass	
2	RS-232 Mouse Test	Pass	
3	RS-232 Modem Test	Pass	

3. Windows XP

Item	Description	Result	Remark
1	Device Manager Check	Pass	
2	RS-232 Mouse Test	Pass	
3	RS-232 Modem Test	Pass	

2.9 Keyboard 、 Mouse Test

1. MS-DOS

Item	Description	Result	Remark
1	Keyboard LED Status Test	Pass	
2	Keyboard Typing Test	Pass	

2. Windows XP

Item	Description	Result	Remark
1	Device Manager Check	Pass	
2	Keyboard Typing Test	Pass	
3	Mouse Detect Test	Pass	

3. Windows Server 2003

Item	Description	Result	Remark
1	Device Manager Check	Pass	
2	Keyboard Typing Test	Pass	
3	Mouse Detect Test	Pass	

2.10 LAN Test

1. Windows XP

Item	Description	Result	Remark
1	Device Manager Check	Pass	
2	Data Transfer Test	Pass	

2. Windows Server 2003

Item	Description	Result	Remark
1	Device Manager Check	Pass	
2	Data Transfer Test	Pass	

2.11 Power Supply Test

1. MS-DOS 6.22

Item	Description	Verification	
		Result	Remark
1	ATX Power On/Off	Pass	Seventeam ST-300BLV
2	ATX Power On/Off	Pass	AcBel API3PC83

2. Windows XP

Item	Description	Verification	
		Result	Remark
1	ATX Power On/Off	Pass	Seventeam ST-300BLV
2	ATX Power On/Off	Pass	AcBel API3PC83

3. Windows Server 2003

Item	Description	Verification	
		Result	Remark
1	ATX Power On/Off	Pass	Seventeam ST-300BLV
2	ATX Power On/Off	Pass	CHANNEL CET-300ATX12

2.12 Floppy Drive Test

Model: SAMSUNG SFD321S

1. MS-DOS 6.22

Item	Description	Result	Remark
1	Floppy Drive Detect	Pass	
2	Boot from Floppy	Pass	
3	Floppy Data Transfer	Pass	

2. Windows XP

Item	Description	Result	Remark
1	Floppy Drive Detect	Pass	
2	Floppy Data Transfer	Pass	

3. Windows Server 2003

Item	Description	Result	Remark
1	Floppy Drive Detect	Pass	
2	Floppy Data Transfer	Pass	

2.13 Boot Up Test

Item	Description	Result	Remark
1	Soft boot from HDD	Pass	
2	Soft boot from CD-ROM	Pass	
3	Soft boot from Floppy	Pass	
4	Reboot test with Win 2000	Pass	
5	Reboot test with Win Server 2000	Pass	
6	Reboot test with Win XP	Pass	
7	Reboot test with Win Server 2003	Pass	

2.14 Os Install

Item	Description	Result	Remark
1	Windows 98	Pass	
3	Windows 2000 SP4	Pass	
4	Windows Serve 2000 r	Pass	
5	Windows XP SP2	Pass	
6	Windows Server 2003	Pass	
7	Linux "Red Hat 9.0"	Pass	
8	Linux "Suse 10.0"	Pass	
9	Linux "Fedora Core5"	Pass	

2.15 Print Port Test

1. Window XP

Item	Description	Result	Remark
1	ECP/EPP PRINT TEST	Pass	

2. Window 2003

Item	Description	Result	Remark
1	ECP/EPP PRINT TEST	Pass	

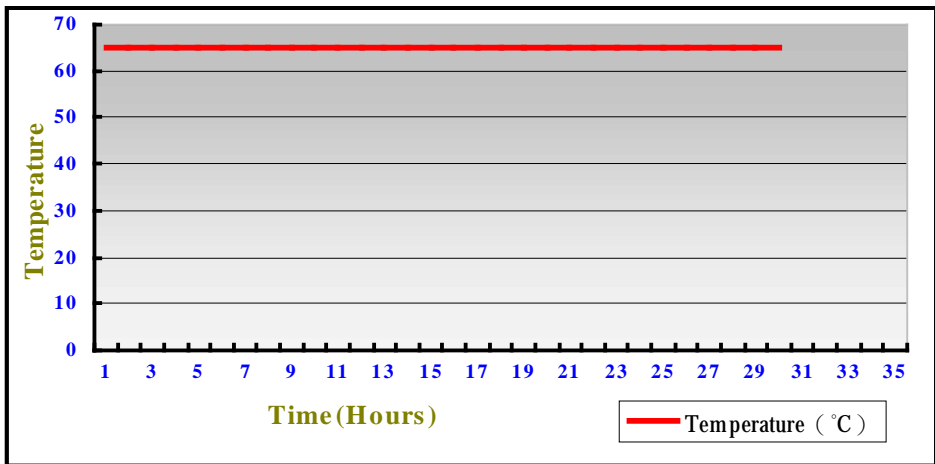
3. Environmental test

3.1 Temperature Test

Hardware Device list:

System Board	LV-677
CPU	Yonah T2400 /2M/ 1.83 GHZ
Memory	ADATA DDRII 667 1G
HDD	Travelstar IC25N080ATMR04-0 80G
Operating OS	Windows XP
Test Equipment	THERMOTRON 2800 Programmer/Controller
Test Program	3DMark 2003

Test Result:



Boot Up Test:

Temperature	Result	Remark
-20°C	Pass	Times
70°C	Pass	Times

4. Reliability Test

4.1 Power Consumption Test

1. Test Environment:

Motherboard	LV-677
CPU	Yonah Merom /667/2M/ 1.83 GHZ
Memory	ADATA DDRII 667MHZ 1GB (ELPIDA E5108AB-BE-E)
Power Supply	Seventeam Model: ST-300BLV 300W

Voltage	Current (A)	Power (W)	Remark
12V	2.79	33.48	Boot Up
5V	2.52	12.6	Boot Up
3.3V	0.6	1.98	Boot Up
5Vsb	0.22	1.1	Boot Up

2. Test Environment:

Motherboard	LV-677
CPU	Yonah Celerom M 410/533/1M/ 1.46 GHZ
Memory	ADATA DDRII 667 1GB (ELPIDA E5108AB-BE-E)
Power Supply	Seventeam Model: ST-300BLV 300W

Voltage	Current (A)	Power (W)	Remark
12V	0.92	11.04	Boot Up
5V	2.52	12.6	Boot Up
3.3V	0.70	2.31	Boot Up
5Vsb	0.20	1.0	Boot Up

3. Test Environment:

Motherboard	LV-677
CPU	Yonah Celerom M 410/533/1M/ 1.46 GHZ
Memory	ADATA DDRII 667 1GB (ELPIDA E5108AB-BE-E) Kingstone DDRII 533 1GB (Hynix HY5PS12821)
HDD	Maxtor DiamondMax Plus9 120GB SATA
CD-ROM	Actima A52T
Power Supply	Seventeam Model: ST-300BLV 300W
Operating System	Windows XP SP2
Test Program	3Dmark 2003

Voltage	Current (A)	Power (W)	Remark
12V	1.52	18.24	
5V	4.7	23.5	
3.3V	0.73	2.409	
5Vsb	0.20	1.0	

4. Test Environment:

Motherboard	LV-677
CPU	Yonah Celerom M 410/533/1M/ 1.46 GHZ
Memory	ADATA DDRII 667 1GB (ELPIDA E5108AB-BE-E) Kingstone DDRII 533 1GB (Hynix HY5PS12821)
HDD	Maxtor DiamondMax Plus9 120Gb SATA
CDROM	Actima A52T
Display Card	Asus EN5750 /D/N/128Mb
Operating System	Windows XP
Test Program	3Dmark 2003

Voltage	Current (A)	Power (W)	Remark
12V	3.60	43.2	
5V	4.17	20.85	
3.3V	2.82	9.306	
5Vsb	0.20	1.0	

5. Test Environment:

Motherboard	LV-677
CPU	Yonah Celerom M 410/533/1M/ 1.46 GHZ
Memory	ADATA DDRII 667 1GB (ELPIDA E5108AB-BE-E) Kingstone DDRII 533 1GB (Hynix HY5PS12821)
HDD	Maxtor DiamondMax Plus9 120Gb SATA
CDROM	Actima A52T
Display	LG.Philips LM170E01
Operating System	Windows XP
Test Program	3Dmark 2003

Voltage	Current (A)	Power (W)	Remark
12V	3.13	37.56	
5V	5.40	27.0	
3.3V	0.70	2.310	
5Vsb	0.25	1.25	

6. Test Environment:

Motherboard	LV-677
CPU	Yonah Celerom M 410/533/1M/ 1.46 GHZ
Memory	ADATA DDRII 667 1GB (ELPIDA E5108AB-BE-E) Kingstone DDRII 533 1GB (Hynix HY5PS12821)
HDD	Maxtor DiamondMax Plus9 120Gb SATA
CDROM	Actima A52T
WLAN	Realtek RTL8180 *2
Operating System	Windows XP
Test Program	3Dmark 2003

Voltage	Current (A)	Power (W)	Remark
12V	1.60	19.2	
5V	3.80	19.0	
3.3V	0.92	3.036	
5Vsb	0.20	1.0	

7. Test Environment:

Motherboard	LV-677
CPU	Yonah Core Duo T25000/667/2M/ 2.0 GHZ
Memory	ADATA DDRII 667 1GB (ELPIDA E5108AB-BE-E) Kingstone DDRII 533 1GB (Hynix HY5PS12821)
HDD	Maxtor DiamondMax Plus9 120Gb SATA
CDROM	Actima A52T
WLAN	Realtek RTL8180 *2
Operating System	Windows XP
Test Program	3Dmark 2003

Voltage	Current (A)	Power (W)	Remark
12V	2.22	26.64	
5V	5.0	25.0	
3.3V	0.92	3.036	
5Vsb	0.30	1.50	

4.2 LV-677(DC) Power Consumption Test

1.Test Environment:

Motherboard	LV-677DC
CPU	Yonah T1300 /667/2M/ 1.66 GHZ
Memory	ADATA DDRII 533 1GB (SAMSUNG K4T51083QB-GC05)
Power Supply	Lien Electronics Model: LE-0312B 120W

Voltage	Max Current (A)	Power (W)	Remark
12V	0.08	0.96	Stand By Power
12V	2.08	24.96	Boot (In Post Screen)
12V	2.65	31.8	Boot (In Post Screen)

2.Test Environment:

Motherboard	LV-677DC
CPU	Yonah T2600 /667/2M/ 2.16 GHZ
Memory	ADATA DDRII 533 1GB (SAMSUNG K4T51083QB-GC05)
Power Supply	Lien Electronics Model: LE-0312B 120W

Voltage	Max Current (A)	Power (W)	Remark
12V	0.08	0.96	Stand By Power
12V	2.27	27.24	Boot (In Post Screen)
12V	2.88	34.56	Boot (In Post Screen)

3.Test Environment:

Motherboard	LV-677DC
CPU	Yonah T2600 /667/2M/ 2.16 GHZ
Memory	ADATA DDRII 533 1GB (SAMSUNG K4T51083QB-GC05)
HDD	Western Digital WD1600JS-00MHB0 160GB
CD-ROM	ASUS CD-S400/A
Power Supply	Lien Electronics Model: LE-0312B 120W
Operating System	Windows XP SP2
Test Program	3DMark 2005

Voltage	Max Current (A)	Power (W)	Remark
12V	4.14	49.68	

4.Test Environment:

CPU	Yonah T2600 /667/2M/ 2.16 GHZ
Memory	ADATA DDRII 533 1GB (SAMSUNG K4T51083QB-GC05)
HDD	Western Digital WD1600JS-00MHB0 160GB
CD-ROM	ASUS CD-S400/A
Power Supply	Lien Electronics Model: LE-0312B 120W
Operating System	Windows XP SP2

Voltage	Current (A)	Power (W)	Remark
12V	1.93	23.16	Do nothing

5.Test Environment:

Motherboard	LV-677DC
CPU	Yonah T2600 /667/2M/ 2.16 GHZ
Memory	ADATA DDRII 533 1GB (SAMSUNG K4T51083QB-GC05)
HDD	Western Digital WD1600JS-00MHB0 160GB
CD-ROM	ASUS CD-S400/A
Power Supply	Lien Electronics Model: LE-0312B 120W
Operating System	Windows XP SP2
Test Program	3DMark 2005

Voltage	Max Current (A)	Power (W)	Remark
12V	1.87	22.44	Do nothing

6.Test Environment:

Motherboard	LV-677DC
CPU	Yonah T2600 /667/2M/ 2.16 GHZ
Memory	ADATA DDRII 533 1GB (SAMSUNG K4T51083QB-GC05) ADATA DDRII 667 1GB (ELPIDA E5108AB-6E-E)
HDD	Western Digital WD1600JS-00MHB0 160GB
CD-ROM	ASUS CD-S400/A
Power Supply	Lien Electronics Model: LE-0312B 120W
Operating System	Windows XP SP2
Test Program	3DMark 2005

Voltage	Max Current (A)	Power (W)	Remark
12V	4.30	51.6	

7. Test Environment:

Motherboard	LV-677DC
CPU	Yonah T2600 /667/2M/ 2.16 GHZ
Memory	ADATA DDRII 533 1GB (SAMSUNG K4T51083QB-GC05) TRANSCEND DDRII 533 2GB (ELPIDA E1108AA-5C-E)
HDD	Western Digital WD1600JS-00MHB0 160GB
CD-ROM	ASUS CD-S400/A
Power Supply	Lien Electronics Model: LE-0312B 120W
Operating System	Windows XP SP2
Test Program	3DMark 2005

Voltage	Max Current (A)	Power (W)	Remark
12V	4.10	49.2	

8. Test Environment:

Motherboard	LV-677DC
CPU	Yonah T2600 /667/2M/ 2.16 GHZ
Memory	ADATA DDRII 533 1GB (SAMSUNG K4T51083QB-GC05)
HDD	Western Digital WD1600JS-00MHB0 160GB
CD-ROM	ASUS CD-S400/A
LVDS Panel	Samsung LTM170EU-L01 17"
Power Supply	Lien Electronics Model: LE-0312B 120W
Operating System	Windows XP SP2
Test Program	3Dmark 2005

Voltage	Max Current (A)	Power (W)	Remark
12V	6.03	72.36	

9. Test Environment:

Motherboard	LV-677DC
CPU	Celeron M 430 / 533/ 1M/ 1.73 GHZ
Memory	ADATA DDRII 533 1GB (SAMSUNG K4T51083QB-GC05)
HDD	Western Digital WD1600JS-00MHB0 160Gb
Power Supply	Instek Model: PSP-2010 199W
Operating System	Windows XP SP2
Test Program	3Dmark 2005

Voltage	Current (A)	Power (W)	Remark
8V	2.664 ~ 4.2	21.312 ~ 33.6	
12V	1.624 ~ 2.552	19.488 ~ 30.624	
19V	0.858 ~ 1.466	16.302 ~ 27.854	

4.3 Thermal measurements at various points on the board

Test Environment :

CPU	Yonah T2500 /2M/ 2.0 GHZ z (with fan)
Memory	240 Pin DDRII 667 1GB
HDD	Seagate ST34321A 4.3GB
DVD-ROM	ASUS CD-S400/A
Power	Seventeam ST-300BLV
Operating System	Windows XP
Test Program	3D WinMark2003

Test Result:

CPU	43°C
945GM (Northbridge)	45°C
ICH7-M (Southbridge)	49°C
U11	52°C
Q1	49°C
U9	53°C
U2	49°C
U6	60°C
U3	64°C

5. Performance Test

5.1 Win Bench 99

Test Environment
Yonah T2500 /2M/ 2.0 GHZ Transcend DDRII 533 2GB (ELPIDA E1108AA-5C-E) ADATA DDRII 667 1GB (ELPIDA E5108AB-6E-E) FUJITSU MHT2080BH 80G(SATA)

1. Windows 2003

Item	WEIGHTED SUITE	Result	Remark
1	CPUmark99zhi	Pass	256
2	FPU Win Mark	Pass	11900
3	Business Disk Win Mark 99	Pass	8580 Thousand Bytes/Sec
4	High-End Disk Win Mark 99	Pass	33900 Thousand Bytes/Sec
5	Business Graphics Win Mark 99	Pass	248
6	High-End Graphics Win Mark 99	Pass	1100

2. Windows XP

Item	WEIGHTED SUITE	Result	Remark
1	CPUmark99	Pass	260
2	FPU Win Mark	Pass	11900
3	Business Disk Win Mark 99	Pass	8720 Thousand Bytes/Sec
4	High-End Disk Win Mark 99	Pass	3100 Thousand Bytes/Sec
5	Business Graphics Win Mark 99	Pass	361
6	High-End Graphics Win Mark 99	Pass	1060

5.2 Win Stone 99 Version 1.1

Test Environment
Yonah T2500 /2M/ 2.0 GHZ Transcend DDRII 533 2GB (ELPIDA E1108AA-5C-E) ADATA DDRII 667 1GB (ELPIDA E5108AB-6E-E) FUJITSU MHT2080BH 80G(SATA)

Windows XP

Item	WEIGHTED SUITE	Result	Remark
1	Business Win stone 99 Win stone 99 Scores	Non-Pass	

5.3 Business Win Stone

1. Windows 2003

WEIGHTED SUITE	Test Environment	Result	Remark
Business Win stone2001	Yonah T1300 /2M/1.66 GHZ	Pass	71.5
	Apacer DDRII 533 1GB(HYB18T512)		73.3
	Kingston DDRII 533		73.5
	1GB(ELPIDAE5108AE-6E-E)		79.5
	Maxtor 6Y120M0 120GB (SATA)		78.2
Business Win stone2002	Yonah T1300 /2M/1.66 GHZ	Pass	33
	Apacer DDRII 533 1GB(HYB18T512)		34.1
	Kingston DDRII 533		35.5
	1GB(ELPIDAE5108AE-6E-E)		37.1
	Maxtor 6Y120M0 120GB (SATA)		35.6
Business Win stone2004	Yonah T1300 /2M/1.66 GHZ	Pass	24
	Apacer DDRII 533 1GB(HYB18T512)		24.1
	Kingston DDRII 533		23.7
	1GB(ELPIDAE5108AE-6E-E)		24.2
	Maxtor 6Y120M0 120GB (SATA)		23.8

2. Windows XP

WEIGHTED SUITE	Test Environment	Result	Remark
Business Win stone2001	Yonah Celeron M410 /1M/ 1.46 GHZ	Pass	64.8
	Kingston DDRII 533 1GB (hyinx HY5PS12821)		66.3
	Maxtor 6Y120M0 120GB (SATA)		65.8
			66
			66.3
Business Win stone2002	Yonah T1300 /2M/1.66 GHZ	Pass	30.7
	Kingston DDRII 533 1GB (hyinx HY5PS12821)		37
	Maxtro Y3LXOYRE 120GB(SATA)		37
			36.7
			37.1
Business Win stone2004	Yonah T1300 /2M/1.66 GHZ	Pass	21.2
	Apacer DDRII 533 1GB(HYB18T512)		10.2
	Kingston DDRII 533 1GB(ELPIDAE5108AE-6E-E)		18
	Maxtro Y3LXOYRE 120GB(SATA)		12.2
			21.2

5.4 Content Creation Winstone

Windows XP

WEIGHTED SUITE	Test Environment	Result	Remark
Content Creation Winstone 2000	Yonah Celeron M410 /1M/ 1.46 GHZ	Pass	81.8
	Kingston DDRII 533 1GB (hyinx HY5PS12821)		76.9
	Maxtor 6Y120M0 120GB (SATA)		82.9
			82.3
			81.6
Content Creation Winstone 2001	Yonah Celeron M410 /1M/ 1.46 GHZ	Pass	81.2
	Kingston DDRII 533 1GB (hyinx HY5PS12821)		101
	Maxtor 6Y120M0 3120GB (SATA)		100.5
			101.3
			99.9
Content Creation Winstone 2003	Yonah Celeron M410 /1M/ 1.46 GHZ	Pass	38.6
	Kingston DDRII 533 1GB (hyinx HY5PS12821)		41.9
	Maxtro Y3LXOYRE 120GB(SATA)		42.8
			42.7
			42.7
Content Creation Winstone 2004	Yonah Celeron M410 /1M/ 1.46 GHZ	Pass	23.6
	Kingston DDRII 533 1GB (hyinx HY5PS12821)		23.7
	Maxtor 6Y120M0 3120GB (SATA)		23.8
			23.7
			23.7

5.5 3D MARK

1. Windows XP

WEIGHTED SUITE	Test Environment	Result	Remark
3DMARK2001 Scores	Yonah T2500 /2M/ 2.0 GHZ Transcend DDRII 533 2GB (ELPIDA E1108AA-5C-E) ADATA DDRII 667 1GB (ELPIDA E5108AB-6E-E)	Pass	5276
3DMARK2003 Scores	FUJITSU MHT2080BH 80G(SATA)	Pass	1159

2. Windows XP

WEIGHTED SUITE	Test Environment	Result	Remark
3DMARK2000 Scores	Yonah T2500 /2M/ 2.0 GHZ	Pass	6916
3DMARK2001 Scores	Kingston DDRII 533 1GB (hyinx HY5PS12821)	Pass	1159
3DMARK2003 Scores	Maxtor 6Y120M0 120GB (SATA)	Pass	971
3DMARK2005 Scores		Pass	351

5.6 3D MARK2006

Windows XP

Item	WEIGHTED SUITE	Test Environment	Result	Remark
1	3DMARK Source	Yonah T2500 /2M/ 2.0 GHZ	Pass	140
2	SM2.0 Source	Kingston DDRII 533 1GB (hyinx HY5PS12821)	Pass	64
3	HDR/SM3.0 Source	Maxtor 6Y120M0 120GB	Non-Pass	N/A
4	CPU Source	(SATA)	Pass	1754

5.7 PC MARK2002

Test Environment
Yonah T2500 /2M/ 2.0 GHZ Kingston DDRII 533 1GB (hyinx HY5PS12821) Maxtor 6Y120M0 120GB (SATA)

Windows XP

Item	WEIGHTED SUITE	Result	Remark
1	CPU test Source	Pass	4983
2	Memory test Source	Pass	7325
3	HDD test Source	Pass	1388

5.8 PC MARK2004

Test Environment
Yonah T2500 /2M/ 2.0 GHZ Kingston DDRII 533 1GB (hyinx HY5PS12821) Maxtor 6Y120M0 120GB (SATA)

Windows XP

Item	WEIGHTED SUITE	Result	Remark
1	System test Source	Pass	2682
2	CPU test Source	Pass	2902
3	Memory test Source	Pass	2934
4	Graphic test Source	Pass	701
5	HDD test Source	Pass	3811

5.9 PC MARK2005

Test Environment
Yonah T2500 /2M/ 2.0 GHZ Kingston DDRII 533 1GB (hyinx HY5PS12821) Maxtor 6Y120M0 120GB (SATA)

Windows XP

Item	WEIGHTED SUITE	Result	Remark
1	System test Source	Pass	1984
2	CPU test Source	Pass	2440
3	Memory test Source	Pass	2470
4	Graphic test Source	Pass	711
5	HDD test Source	Pass	4310