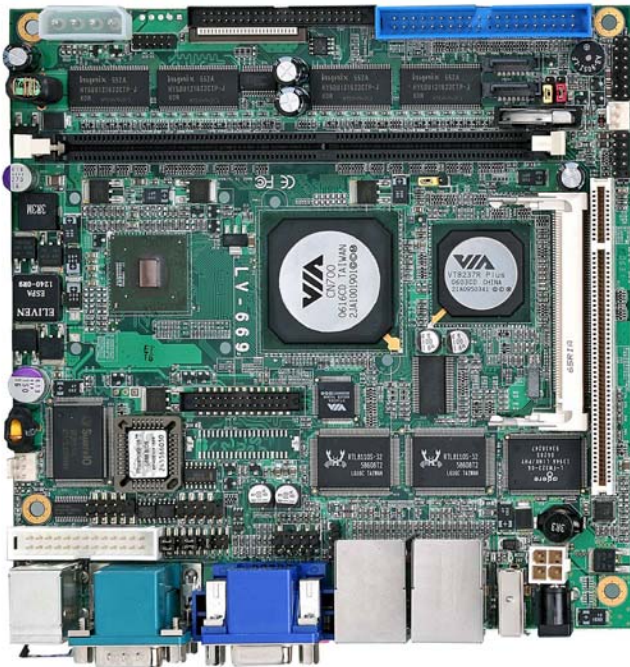


LV-669

Test Report

Edition 1.0

2006/11/28



Test Engineer :

Identify:

Index

Index	2
1. Function test	4
1.1 Hardware function	4
1.2 BIOS function	6
1.3 Driver	8
2. Compatibility test	9
2.1 CPU Test	9
2.2 Memory Test	11
2.3 VGA Graphic Test	13
2.4 Audio Test	14
2.5 HDD Test	15
2.6 USB Test	23
2.7 Serial Port Test	24
2.8 IrDA Test	25
2.9 Keyboard Test	26
2.10 Mouse Test	27
2.11 LAN Module Test	28
2.12 Power Supply Test	29
2.13 CD-ROM Test	30
2.14 Floppy Drive Test	34
2.15 Boot Up Test	35
2.16 Os Install	35
3. Environmental test	36
3.1 Temperature Test	36
LV-669 Power Consumption	37
4.1 Power Consumption Test	37
LV-669	37

LV-669	37
LV-669	38
LV-669	38
LV-669	39
LV-669	39
LV-669	40
LV-669	41
4.3 Thermal measurements at various points on the board.....	42
5. Performance Test	43
5.1 Business Win Stone 2001	43
5.2 Business Win Stone 2002	44
5.3 Multimedia Content Creation Winstone 2000	45
5.4 Multimedia Content Creation Winstone 2001	46
5.5 Multimedia Content Creation Winstone 2003	47
5.6 Multimedia Content Creation Winstone 2004	48
5.7 3D MARK	49
5.8 PCMARK 2004.....	50

1. Function test

1.1 Hardware function

Base Function Test

Item	Description	Result
1	Power Button	Pass
2	Reset	Pass
3	Power LED	Pass
4	HDD LED	Pass
5	IDE Primary Master	Pass
6	IDE Primary Slave	Pass
7	IDE Secondary Master	Pass
8	IDE Secondary Slave	Pass
9	Floppy	Pass
10	LAN Port	Pass
11	DIMM	Pass
12	VGA Port	Pass
13	Keyboard	Pass
14	Mouse	Pass
15	AUDIO Port	Pass
16	COM 1	Pass
17	COM 2	Pass
18	COM 3	Pass
19	COM 4	Pass
20	IRDA	Pass
21	SYSFAN	Pass
22	USB Port	Pass

23	PCI	Pass
24	Compact Flash	Pass
25	MINI PCI	Pass
26	Serial ATA	Pass
27	Printer Port	Pass

2.0 PITCH

1	JRTC	Pass
2	JVLCD	Pass
3	JAT	Pass
4	JCFSEL	Pass

1.2 BIOS function

Item	Description	Result	Remark
1	Press 'Del' to run Setup Utility	Pass	
2	Ctrl-Alt-Del – Soft-Reboot	Pass	
3	Save & Exit Setup	Pass	
4	Date & Time Setting	Pass	
5	Drive A	Pass	
6	Azalia Audio	Pass	
7	Quick Power On Self Test	Pass	
8	Boot Device Setting	Pass	
9	Boot Up Floppy Seek	Pass	
10	Boot Up Num Lock Status	Pass	
11	On Chip USB Controller	Pass	
12	USB Emulation	Pass	
13	USB Keyboard Support	Pass	
14	USB Mouse Support	Pass	
15	On Chip SATA	Pass	
16	SATA Mode	Pass	
17	On Chip IDE Channel 0	Pass	
18	On Chip IDE Channel 1	Pass	
19	Onboard FDC Controller	Pass	
20	Onboard Serial Port 1	Pass	
21	Onboard Serial Port 2	Pass	
22	UART Mode Select	Pass	
23	Onboard Parallel Port	Pass	
24	ACPI Suspend Type	Pass	

25	Soft-Off by PWRBTN	Pass	
26	Watching Dog Timer Select	Pass	
27	RTC Alarm Resume	Pass	
28	Ac loss Auto restart	Pass	

1.3 Driver

1. Windows 2000 Driver Test

Item	Description	Result	Remark
1	Chip set Driver	Pass	
2	VGA Driver	Pass	
3	Audio Driver	Pass	
4	LAN Driver	Pass	

2. Windows XP SP2 Driver Test

Item	Description	Result	Remark
1	Chip set Driver	Pass	
2	VGA Driver	Pass	
3	Audio Driver	Pass	
4	LAN Driver	Pass	

3. LINUX SUSE 10.1 Driver Test

Item	Description	Result	Remark
1	Chip set Driver	Pass	
2	VGA Driver	Pass	
3	Audio Driver	Pass	
4	LAN Driver	Pass	

2. Compatibility test

2.1 CPU Test

Processor: VIA C7 1.5GHz

O.S: MS-DOS 6.22

Item	Description	Result	Remark
1	CPU Type Detect	Pass	
2	CPU Speed Detect	Pass	
3	OS Running Stability	Pass	

Windows 2000

Item	Description	Result	Remark
1	CPU Type Detect	Pass	
2	CPU Speed Detect	Pass	
3	OS Running Stability	Pass	

Windows XP

Item	Description	Result	Remark
1	CPU Type Detect	Pass	
2	CPU Speed Detect	Pass	
3	OS Running Stability	Pass	

LINUX Suse10.1

Item	Description	Result	Remark
1	CPU Type Detect	Pass	
2	CPU Speed Detect	Pass	
3	OS Running Stability	Pass	

2.2 Memory Test

1. KINGMAX DDR 333 512MB (KDL388P4EA-80)

Item	Description	Result	Remark
1	Boot	Pass	
2	MS-DOS 6.22	Pass	
4	Windows 2000	Pass	
6	Windows XP	Pass	
8	Linux Suse10.1	Pass	

2. Hynix DDR 400 1GB (HY5DU12822AT-D43)

Item	Description	Result	Remark
1	Boot	Pass	
2	MS-DOS 6.22	Pass	
4	Windows 2000	Pass	
6	Windows XP	Pass	
7	Linux Suse10.1	Pass	

3. SAMSUNG DDR 333 512MB (K4H560838D-TCB3 232)

Item	Description	Result	Remark
1	Boot	Pass	
2	MS-DOS 6.22	Pass	
4	Windows 2000	Pass	
6	Windows XP	Pass	
7	Linux Suse10.1	Pass	

4. SAMSUNG DDR 333 1GB (K4H5604380-TCB3 313)

Item	Description	Result	Remark
1	Boot	Pass	
2	MS-DOS 6.22	Pass	
4	Windows 2000	Pass	
6	Windows XP	Pass	
7	Linux Suse10.1	Pass	

2.3 VGA Graphic Test

1. Windows 2000

Item	Description	Result	Remark
1	Driver Install	Pass	
2	Resolution/Color Change	Pass	
3	Dual View Test	Pass	
4	CRT Display Test	Pass	
5	CRT Display Quality Test	Pass	

2. Windows XP

Item	Description	Result	Remark
1	Driver Install	Pass	
2	Resolution/Color Change	Pass	
3	Dual View Test	Pass	
4	CRT Display Test	Pass	
5	CRT Display Quality Test	Pass	

3. LINUX Suse10.1

Item	Description	Result	Remark
1	Driver Install	Pass	
2	Resolution/Color Change	Pass	
3	CRT Display Test	Pass	

2.4 Audio Test

1. Windows 2000

Item	Description	Result	Remark
1	Driver Install	Pass	
2	Speaker Left	Pass	
3	Speaker Right	Pass	
4	Sound Effect	Pass	
5	Equalizer	Pass	
6	Microphone	Pass	

2. Windows XP

Item	Description	Result	Remark
1	Driver Install	Pass	
2	Speaker Left	Pass	
3	Speaker Right	Pass	
4	Sound Effect	Pass	
5	Equalizer	Pass	
6	Microphone	Pass	

3. LINUX Suse10.1

Item	Description	Result	Remark
1	Driver Install	Pass	
2	Sound Effect	Pass	
3	Equalizer	Pass	

2.5 HDD Test

Model: HITACHI Travelstar HTS424040M9AT00 40GB

1. MS-DOS 6.22

Item	Description	Result	Remark
1	HDD Size Detect	Pass	
2	HDD Read/Write	Pass	
3	HDD Partition/Format	Pass	
4	HDD LED Check	Pass	

2. Windows 2000

Item	Description	Result	Remark
1	HDD Detect	Pass	
2	HDD Read/Write	Pass	
3	HDD Data Transfer	Pass	
4	HDD Format	Pass	
5	HDD LED Check	Pass	

3. Windows XP

Item	Description	Result	Remark
1	HDD Detect	Pass	
2	HDD Read/Write	Pass	
3	HDD Data Transfer	Pass	
4	HDD Format	Pass	
5	HDD LED Check	Pass	

4. LINUX Suse10.1

Item	Description	Result	Remark
1	HDD Detect	Pass	
2	HDD Read/Write	Pass	
3	HDD Data Transfer	Pass	
4	HDD Format	Pass	
5	HDD LED Check	Pass	

Model: Western Digital WD2500JB-00GVC0 250GB

1. MS-DOS 6.22

Item	Description	Result	Remark
1	HDD Size Detect	Pass	
2	HDD Read/Write	Pass	
3	HDD Partition/Format	Pass	
5	HDD LED Check	Pass	

2. Windows 2000

Item	Description	Result	Remark
1	HDD Detect	Pass	
2	HDD Read/Write	Pass	
3	HDD Data Transfer	Pass	
4	HDD Format	Pass	
5	HDD LED Check	Pass	

3. Windows XP

Item	Description	Result	Remark
1	HDD Detect	Pass	
2	HDD Read/Write	Pass	
3	HDD Data Transfer	Pass	
4	HDD Format	Pass	
5	HDD LED Check	Pass	

4. LINUX Suse10.1

Item	Description	Result	Remark
1	HDD Detect	Pass	
2	HDD Read/Write	Pass	
3	HDD Data Transfer	Pass	
4	HDD Format	Pass	
5	HDD LED Check	Pass	

Model: Western Digital WD1600JS-00MHB0 160GB (SATA)

1. MS-DOS 6.22

Item	Description	Result	Remark
1	HDD Size Detect	Pass	
2	HDD Read/Write	Pass	
3	HDD Partition/Format	Pass	
5	HDD LED Check	Pass	

2. Windows 2000

Item	Description	Result	Remark
1	HDD Detect	Pass	
2	HDD Read/Write	Pass	
3	HDD Data Transfer	Pass	
4	HDD Format	Pass	
5	HDD LED Check	Pass	

3. Windows XP

Item	Description	Result	Remark
1	HDD Detect	Pass	
2	HDD Read/Write	Pass	
3	HDD Data Transfer	Pass	
4	HDD Format	Pass	
5	HDD LED Check	Pass	

4. LINUX Suse10.1

Item	Description	Result	Remark
1	HDD Detect	Pass	
2	HDD Read/Write	Pass	
3	HDD Data Transfer	Pass	
4	HDD Format	Pass	
5	HDD LED Check	Pass	

Model: Western Digital WD2500JB-00REA0

1. MS-DOS 6.22

Item	Description	Result	Remark
1	HDD Size Detect	Pass	
2	HDD Read/Write	Pass	
3	HDD Partition/Format	Pass	
5	HDD LED Check	Pass	

2. Windows 2000

Item	Description	Result	Remark
1	HDD Detect	Pass	
2	HDD Read/Write	Pass	
3	HDD Data Transfer	Pass	
4	HDD Format	Pass	
5	HDD LED Check	Pass	

3. Windows XP

Item	Description	Result	Remark
1	HDD Detect	Pass	
2	HDD Read/Write	Pass	
3	HDD Data Transfer	Pass	
4	HDD Format	Pass	
5	HDD LED Check	Pass	

4. LINUX Suse10.1

Item	Description	Result	Remark
1	HDD Detect	Pass	
2	HDD Read/Write	Pass	
3	HDD Data Transfer	Pass	
4	HDD Format	Pass	
5	HDD LED Check	Pass	

2.6 USB Test

1. Windows 2000

Item	Description	Result	Remark
1	Device Manager Check	Pass	
2	External USB Keyboard Test	Pass	
3	External USB Mouse Test	Pass	
5	Direct Connect by USB Test	Pass	
6	Hot plugging test	Pass	

2. Windows XP

Item	Description	Result	Remark
1	Device Manager Check	Pass	
2	External USB Keyboard Test	Pass	
3	External USB Mouse Test	Pass	
5	Direct Connect by USB Test	Pass	
6	Hot plugging test	Pass	

3. LINUX Suse10.1

Item	Description	Result	Remark
1	Device Manager Check	Pass	
2	External USB Keyboard Test	Pass	
3	External USB Mouse Test	Pass	
5	Direct Connect by USB Test	Pass	
6	Hot plugging test	Pass	

2.7 Serial Port Test

1. Windows 2000

Item	Description	Result	Remark
1	Device Manager Check	Pass	
2	Driver Install	Pass	
3	RS-232 Mouse Test (PNP)	Pass	
4	RS-232 Modem Test (PNP)	Pass	
5	B&B Electronics COM Port RS-232 Test (W/Loop-Back)	Pass	

2. Windows XP

Item	Description	Result	Remark
1	Device Manager Check	Pass	
2	Driver Install	Pass	
3	RS-232 Mouse Test (PNP)	Pass	
4	RS-232 Modem Test (PNP)	Pass	
5	B&B Electronics COM Port RS-232 Test (W/Loop-Back)	Pass	

2.8 IrDA Test

1. Windows 2000

Item	Description	Result	Remark
1	Device Manager Check	Pass	
2	SIR Mode Data Transfer Test	Pass	
3	SIR Data Transfer Quality Test	Pass	
4	SIR Loop-Back Test	Pass	

2. Windows XP

Item	Description	Result	Remark
1	Device Manager Check	Pass	
2	SIR Mode Data Transfer Test	Pass	
3	SIR Data Transfer Quality Test	Pass	
4	SIR Loop-Back Test	Pass	

2.9 Keyboard Test

1. MS-DOS 6.22

Item	Description	Result	Remark
1	QAPLUS Keyboard Test	Pass	
2	Keyboard LED Status Test	Pass	
3	Keyboard Command Test	Pass	
4	Keyboard Typing Test	Pass	

2. Windows 2000

Item	Description	Result	Remark
1	Device Manager Check	Pass	
2	Keyboard LED Status Test	Pass	
3	Keyboard Typing Test	Pass	

3. Windows XP

Item	Description	Result	Remark
1	Device Manager Check	Pass	
2	Keyboard LED Status Test	Pass	
3	Keyboard Typing Test	Pass	

4. LINUX Suse10.1

Item	Description	Result	Remark
1	Device Manager Check	Pass	
2	Keyboard LED Status Test	Pass	
3	Keyboard Typing Test	Pass	

2.10 Mouse Test

1. Windows 2000

Item	Description	Result	Remark
1	Device Manager Check	Pass	
2	Mouse Detect Test (PNP)	Pass	
3	Dos Mode Mouse Test	Pass	

2. Windows XP

Item	Description	Result	Remark
1	Device Manager Check	Pass	
2	Mouse Detect Test (PNP)	Pass	
3	Dos Mode Mouse Test	Pass	

3. LINUX Suse10.1

Item	Description	Result	Remark
1	Device Manager Check	Pass	
2	Mouse Detect Test (PNP)	Pass	

2.11 LAN Module Test

1. Windows 2000

Item	Description	Result	Remark
1	LAN Module Install Test	Pass	
2	Driver Install	Pass	
3	Device Manager Check	Pass	
4	Data Transfer Test	Pass	

2. Windows XP

Item	Description	Result	Remark
1	LAN Module Install Test	Pass	
2	Driver Install	Pass	
3	Device Manager Check	Pass	
4	Data Transfer Test	Pass	

3. LINUX Suse10.1

Item	Description	Result	Remark
1	LAN Module Install Test	Pass	
2	Driver Install	Pass	
3	Device Manager Check	Pass	
4	Data Transfer Test	Pass	

2.12 Power Supply Test

1. MS-DOS 6.22

Item	Description	Verification	
		Result	Remark
1	ATX Power On/Off	Pass	hec WIN DMILL PRO 315W
2	ATX Power On/Off	Pass	Seasonic SS-330HB (330W)

2. Windows 2000

Item	Description	Verification	
		Result	Remark
1	ATX Power On/Off	Pass	hec WIN DMILL PRO 315W
2	ATX Power On/Off	Pass	Seasonic SS-330HB (330W)

3. Windows XP

Item	Description	Verification	
		Result	Remark
1	ATX Power On/Off	Pass	hec WIN DMILL PRO 315W
2	ATX Power On/Off	Pass	Seasonic SS-330HB (330W)

4. LINUX Suse10.1

Item	Description	Verification	
		Result	Remark
1	ATX Power On/Off	Pass	hec WIN DMILL PRO 315W
2	ATX Power On/Off	Pass	Seasonic SS-330HB (330W)

2.13 CD-ROM Test

Model: 4KUS CD-RW/DVD-ROM CPB-6V5216

1. MS-DOS 6.22

Item	Description	Result	Remark
1	CD-ROM Detect	Pass	
2	CD-ROM Read	Pass	
3	CD-ROM Bootable	Pass	
4	CD-ROM Data Transfer	Pass	

2. Windows 2000

Item	Description	Result	Remark
1	CD-ROM Detect	Pass	
2	CD-ROM Read	Pass	
3	CD-ROM Data Transfer	Pass	

3. Windows XP

Item	Description	Result	Remark
1	CD-ROM Detect	Pass	
2	CD-ROM Read	Pass	
3	CD-ROM Data Transfer	Pass	

4. LINUX Suse10.1

Item	Description	Result	Remark
1	CD-ROM Detect	Pass	
2	CD-ROM Read	Pass	
3	CD-ROM Data Transfer	Pass	

Model: BenQ CB523C

1. MS-DOS 6.22

Item	Description	Result	Remark
1	CD-ROM Detect	Pass	
2	CD-ROM Read	Pass	
3	CD-ROM Bootable	Pass	
4	CD-ROM Data Transfer	Pass	

2. Windows 2000

Item	Description	Result	Remark
1	CD-ROM Detect	Pass	
2	CD-ROM Read	Pass	
3	CD-ROM Data Transfer	Pass	

3. Windows XP

Item	Description	Result	Remark
1	CD-ROM Detect	Pass	
2	CD-ROM Read	Pass	
3	CD-ROM Data Transfer	Pass	

4. LINUX Suse10.1

Item	Description	Result	Remark
1	CD-ROM Detect	Pass	
2	CD-ROM Read	Pass	
3	CD-ROM Data Transfer	Pass	

Model: Asus CB-5216AG

1. MS-DOS 6.22

Item	Description	Result	Remark
1	CD-ROM Detect	Pass	
2	CD-ROM Read	Pass	
3	CD-ROM Bootable	Pass	
4	CD-ROM Data Transfer	Pass	

2. Windows 2000

Item	Description	Result	Remark
1	CD-ROM Detect	Pass	
2	CD-ROM Read	Pass	
3	CD-ROM Data Transfer	Pass	

3. Windows XP

Item	Description	Result	Remark
1	CD-ROM Detect	Pass	
2	CD-ROM Read	Pass	
3	CD-ROM Data Transfer	Pass	

4. LINUX Suse10.1

Item	Description	Result	Remark
1	CD-ROM Detect	Pass	
2	CD-ROM Read	Pass	
3	CD-ROM Data Transfer	Pass	

Model: ASUS CD-S400/A

1. MS-DOS 6.22

Item	Description	Result	Remark
1	CD-ROM Detect	Pass	
2	CD-ROM Read	Pass	
3	CD-ROM Bootable	Pass	
4	CD-ROM Data Transfer	Pass	

2. Windows 2000

Item	Description	Result	Remark
1	CD-ROM Detect	Pass	
2	CD-ROM Read	Pass	
3	CD-ROM Data Transfer	Pass	

3. Windows XP

Item	Description	Result	Remark
1	CD-ROM Detect	Pass	
2	CD-ROM Read	Pass	
3	CD-ROM Data Transfer	Pass	

4. LINUX Suse10.1

Item	Description	Result	Remark
1	CD-ROM Detect	Pass	
2	CD-ROM Read	Pass	
3	CD-ROM Data Transfer	Pass	

2.14 Floppy Drive Test

Model: TEAC (FD-05HG)

1. MS-DOS 6.22

Item	Description	Result	Remark
1	Floppy Drive Detect	Pass	
2	Floppy Read/Write	Pass	
3	Boot from Floppy	Pass	
4	Floppy Data Transfer	Pass	

2. Windows 2000

Item	Description	Result	Remark
1	Floppy Drive Detect	Pass	
2	Floppy Read/Write	Pass	
3	Floppy Data Transfer	Pass	

3. Windows XP

Item	Description	Result	Remark
1	Floppy Drive Detect	Pass	
2	Floppy Read/Write	Pass	
3	Floppy Data Transfer	Pass	

2.15 Boot Up Test

Item	Description	Result	Remark
1	Soft boot from HDD	Pass	Times
2	Soft boot from CD-ROM	Pass	Times
3	Reboot test with Win 2000	Pass	Times
4	Reboot test with Win XP	Pass	Times
5	Reboot test with LINUX Suse10.1	Pass	Times

2.16 Os Install

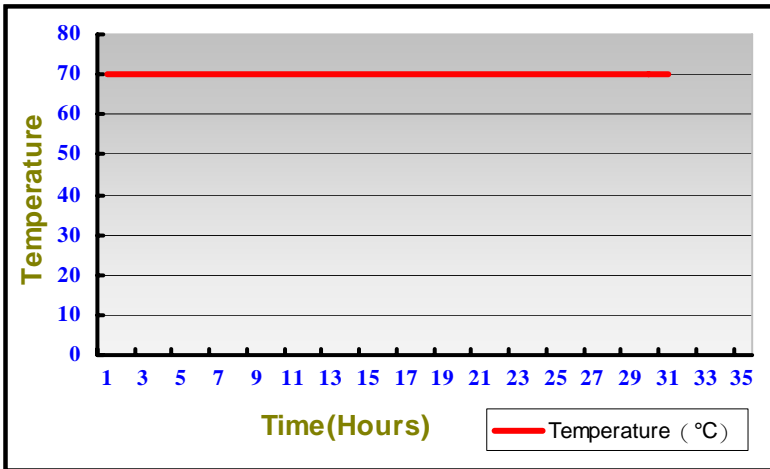
Item	Description	Result	Remark
1	Windows 2000	Pass	
2	Windows XP SP2	Pass	
3	Linux " Suse10.1 "	Pass	

3. Environmental test

3.1 Temperature Test

Hardware Device list:

System Board	LV-669
CPU	VIA C7 1.5GHz
Memory	KINGMAX DDR 333 512MB(KDL388P4EA-60)
HDD	SYNNEX Seagate 9BJ4E-300 250G (SATA)
Power Supply	FSP GROUP INC FSP 250-60GTA (PF) 250W
Test Equipment	THERMOTRON 2800 Programmer/Controller
Test Program	3DMARK 2003



Test Result:

Item	Description	Result	Remark
1	70°C 3DMARK Run	Pass	
2	70°C Boot Test	Pass	Times
3	-20°C Boot Test	Pass	Times

LV-669 Power Consumption

4.1 Power Consumption Test

1. Test Environment:

Motherboard	LV-669
CPU	VIA C7 1.5GHz
Memory	Hynix DDR 1GB 400 HY-5DU12822AT-D43 (331AA)
Power Supply	Seasonic SS-330HB (330W)
LVDS Pannel	SAMSUNG LTM170EU-L01 17”

Voltage	Max Current (A)	Power (W)	Remark
12V	0.15	1.8	Stand By Power
12V	4.22	51.3	Boot UP

2. Test Environment:

Motherboard	LV-669
CPU	VIA C7 1.5GHz
Memory	HYNIX DDR 1GB 400 HY-5DU12822AT-D43 (331AA)
Power Supply	Seasonic SS-330HB (330W)
LVDS Pannel	SAMSUNG LTM170EU-L01 17”
HDD	SYNNEX Seagate 9BJ4E-300 250GB (SATA)

Voltage	Max Current (A)	Power (W)	Remark
12V	5.73	68.76	Boot UP
5V	0.56	2.8	Boot UP

3. Test Environment:

Motherboard	LV-669
CPU	VIA C7 1.5GHz
Memory	HYNIX DDR 1GB 400 HY-5DU12822AT-D43 (331AA)
Power Supply	Seasonic SS-330HB (330W)
LVDS Pannel	SAMSUNG LTM170EU-L01 17"
HDD	SYNNEX Seagate 9BJ4E-300 250GB (SATA)
Operating System	Windows XP SP2

Voltage	Max Current (A)	Power (W)	Remark
12V	6.74	80.88	Do nothing
5V	0.8	4	Do nothing

4. Test Environment:

Motherboard	LV-669
CPU	VIA C7 1.5GHz
Memory	HYNIX DDR 1GB 400 HY-5DU12822AT-D43 (331AA)
Power Supply	Seasonic SS-330HB (330W)
LVDS Pannel	SAMSUNG LTM170EU-L01 17"
HDD	SYNNEX Seagate 9BJ4E-300 250GB (SATA)
Operating System	Windows XP SP2
Test Program	3DMark 2003

Voltage	Current (A)	Power (W)	Remark
12V	6.78	81.36	
5V	0.86	4.3	

5. Test Environment:

Motherboard	LV-669
CPU	VIA C7 1.5GHz
Memory	HYNIX DDR 1GB 400 HY-5DU12822AT-D43 (331AA)
Power Supply	Seasonic SS-330HB (330W)
LVDS Pannel	SAMSUNG LTM170EU-L01 17”
HDD	SYNNEX Seagate 9BJ4E-300 250GB (SATA)
CD-ROM	SYNNEX COM-5216

Voltage	Max Current (A)	Power (W)	Remark
12V	5.79	69.48	Do nothing
5V	1.17	5.85	Do nothing

6. Test Environment:

Motherboard	LV-669
CPU	VIA C7 1.5GHz
Memory	HYNIX DDR 1GB 400 HY-5DU12822AT-D43 (331AA)
Power Supply	Seasonic SS-330HB (330W)
LVDS Pannel	SAMSUNG LTM170EU-L01 17”
HDD	SYNNEX Seagate 9BJ4E-300 250GB (SATA)
CD-ROM	SYNNEX COM-5216
Operating System	Windows XP SP2
Test Program	3DMark 2003

Voltage	Max Current (A)	Power (W)	Remark
12V	5.83	69.96	
5V	1.37	6.85	

7. Test Environment:

Motherboard	LV-669
CPU	VIA C7 1.5GHz
Memory	HYNIX DDR 1GB 400 HY-5DU12822AT-D43 (331AA)
Power Supply	Seasonic SS-330HB (330W)
LVDS Pannel	SAMSUNG LTM170EU-L01 17"
HDD	SYNNEX Seagate 9BJ4E-300 250GB (SATA)
CD-ROM	SYNNEX COM-5216
Floppy	TEAC FD-O5HG
Operating System	Windows XP SP2

Voltage	Max Current (A)	Power (W)	Remark
12V	5.79	69.36	Do nothing
5V	1.16	5.8	Do nothing

8. Test Environment:

Motherboard	LV-669
CPU	VIA C7 1.5GHz
Memory	HYNIX DDR 1GB 400 HY-5DU12822AT-D43 (331AA)
Power Supply	Seasonic SS-330HB (330W)
LVDS Pannel	SAMSUNG LTM170EU-L01 17"
HDD	SYNNEX Seagate 9BJ4E-300 250GB (SATA)
CD-ROM	SYNNEX COM-5216
Floppy	TEAC FD-O5HG
Operating System	Windows XP SP2
Test Program	3DMark 2003

Voltage	Max Current (A)	Power (W)	Remark
12V	5.83	69.96	
5V	1.37	6.85	

4.3 Thermal measurements at various points on the board

Test Environment :

CPU	VIA C7 1.5GHz (with fan)
Memory	Onboard optional 256MB
HDD	Western Digital WD2500JB-00REA0 250G
DVD-ROM	SYNNEX COM-5216
Power	Seasonic SS-330HB (330W)
Operating System	Windows XP
Test Program	3D WinMark2003

Test Result:

CPU	43.4°C
Northbridge	38.6°C
VT8237R (Southbridge)	49°C
U12	37.7°C
U14	51.3°C
Q18	43°C
U18	43.6°C

5. Performance Test

5.1 Business Win Stone 2001

Processor: VIA C7 1.5 GHz

1. Windows 2000

Item	WEIGHTED SUITE	Result	Remark
1	Business Win stone 2001 Win stone 2001 Scores	Pass	36.6 36.2 36.1 36.1 36

2. Windows XP

Item	WEIGHTED SUITE	Result	Remark
1	Business Win stone 2001 Win stone 2001 Scores	Pass	37.1 36.9 36.7 36.8 36.9

5.2 Business Win Stone 2002

Processor: VIA C7 1.5GHz

1. Windows 2000

Item	WEIGHTED SUITE	Result	Remark
1	Business Win stone 2002 Win stone 2002 Scores	Pass	18.6 18.8 18.8 18.7 18.8

2. Windows XP

Item	WEIGHTED SUITE	Result	Remark
1	Business Win stone 2002 Win stone 2002 Scores	Pass	18.2 17.8 18 18.2 18.1

5.3 Multimedia Content Creation Winstone 2000

Processor: VIA C7 1.5GHz

1. Windows 2000

Item	WEIGHTED SUITE	Result	Remark
1	Multimedia Content Creation Winstone 2000 Scores	Pass	47.4 48.8 49.3 49.3 48.8

2. Windows XP

Item	WEIGHTED SUITE	Result	Remark
1	Multimedia Content Creation Winstone XP Scores	Pass	43.5 42.9 43.4 43.2 43.3

5.4 Multimedia Content Creation Winstone 2001

Processor: VIA C7 1.5GHz

1. Windows 2000

Item	WEIGHTED SUITE	Result	Remark
1	Multimedia Content Creation Winstone 2001 Scores	Pass	46.3 46.4 46.4 46.2 46.2

2. Windows XP

Item	WEIGHTED SUITE	Result	Remark
1	Multimedia Content Creation Winstone 2001 Scores	Pass	44.7 44.6 44.6 44.6 44.6

5.5 Multimedia Content Creation Winstone 2003

Processor: VIA C7 1.5GHz

1. Windows 2000

Item	WEIGHTED SUITE	Result	Remark
1	Multimedia Content Creation Winstone 2003 Scores	Pass	16.9 17.1 17.1 17.1 17.1

2. Windows XP

Item	WEIGHTED SUITE	Result	Remark
1	Multimedia Content Creation Winstone 2003 Scores	Pass	15.8 15.9 15.9 15.9 16

5.6 Multimedia Content Creation Winstone 2004

Processor: VIA C7 1.5GHz

1. Windows 2000

Item	WEIGHTED SUITE	Result	Remark
1	Multimedia Content Creation Winstone 2004 Scores	Pass	9.4 9.4 9.4 9.4 9.4

2. Windows XP

Item	WEIGHTED SUITE	Result	Remark
1	Multimedia Content Creation Winstone 2004 Scores	Pass	8.9 8.9 9 9 9

5.7 3D MARK

Processor: VIA C7 1.5GHz

1. Windows 2000

Item	WEIGHTED SUITE	Result	Remark
1	3DMARK2000 Scores	Pass	2737
2	3DMARK2001 Scores	Pass	1256
3	3DMARK2003 Scores	Pass	83

2. Windows XP

Item	WEIGHTED SUITE	Result	Remark
1	3DMARK2000 Scores	Pass	2114
2	3DMARK2001 Scores	Pass	1428
3	3DMARK2003 Scores	Pass	78

5.8 PCMARK 2004

Processor: VIA C7 1.5GHz

1. Windows 2000

Item	WEIGHTED SUITE	Result	Remark
1	Memory Score	Pass	873
2	HDD Score	Pass	2108
3	Graphics Score	Pass	426

2. Windows XP

Item	WEIGHTED SUITE	Result	Remark
1	PCMARK Score	Pass	1137
2	CPU Score	Pass	1235
3	Memory Score	Pass	847
4	HDD Score	Pass	4788
5	Graphics Score	Pass	324