

LS-570

Test Report

Edition 1.0

2007/2/2



Index

Index	2
1.Function test	4
1.1Hardware function	4
1.2 BIOS function	6
1.3 Driver.....	7
2. Compatibility test	8
2.1 CPU Test	8
2.2 Memory Test.....	11
2.3 VGA Graphic Test.....	12
2.4 Audio Test.....	12
2.5 HDD Test	13
2.6 USB Test	16
2.7 Serial Port Test	17
2.8 IrDA Test.....	17
2.9 Keyboard Test	18
2.10 Mouse Test.....	19
2.11 LAN Module Test	20
2.12 Power Supply Test.....	21
4. Linux “Suse 10.0”	21
2.13 CD-ROM Test.....	22
2.14 Floppy Drive Test.....	25
2.15 Printer Port Test.....	26
2.16 Boot Up Test.....	27
2.17 Os Install	27
3. Environmental test.....	28
3.1 Temperature Test.....	28
4. Reliability Test.....	29
4.1 Power Consumption Test	29
4.2 Thermal measurements at various points on the board.....	41

5. Performance Test	44
5.1 Content Creation WinStone 2001	44
5.2 Business WinStone 2002	45
5.2 Business WinStone 2004	46
5.3 Multimedia Content Creation Winstone 2003	47
5.4 Multimedia Content Creation Winstone 2004	48
5.5 3D MARK	50
5.6 PCMARK 2002	53
5.7 PCMARK 2004	57
Windows XP	58
5.8 PCMARK 2005	60
LV-570 Power Consumption Test.....	62
LS-570(DC) Power Consumption Test	36

1.Function test

1.1Hardware function

Base Function Test

1	Power Button	Pass
2	Reset	Pass
3	Power LED	Pass
4	HDD LED	Pass
5	IDE Primary Master	Pass
6	IDE Primary Slave	Pass
7	IDE Secondary Master	Pass
8	IDE Secondary Slave	Pass
9	Floppy	Pass
10	Compact Flash	Pass
11	DIMM	Pass
12	VGA Port	Pass
13	Keyboard	Pass
14	Mouse	Pass
15	CN_PS2	Pass
16	COM 1	Pass
17	COM 2	Pass
18	COM3	Pass
19	COM4	Pass
20	CN_USB 1	Pass
21	CN_USB 2	Pass
22	CN_USB3	Pass
23	Printer Port	Pass
24	IrDA	Pass
25	SYSFAN	Pass

26	CPUFAN	Pass
27	MINI PCI	Pass
28	PCI	Pass
29	IDE	Pass
30	HDTV	Pass
31	DDRII A	Pass
32	DDRII B	Pass
33	AUDIO	Pass
34	CDIN	Pass
35	LAN 1	Pass
36	LAN 2	Pass
37	LAN 3	Pass
38	LAN 4	Pass
39	GPIO	Pass
40	LVDS	Pass
41	DC_OUT	Pass
42	CN_Inv	Pass
43	SATA 1	Pass
44	SATA 2	Pass
45	ATX	Pass
46	Buzzer	Pass

2.0 PITCH (DIP)

1	JRTC	Pass
2	JVLCD	Pass
3	JCFSEL	Pass
5	JCSEL 1/2	Pass

1.2 BIOS function

Item	Description	Result	Remark
1	Press 'Del' to run Setup Utility	Pass	
2	Ctrl-Alt-Del – Soft-Reboot	Pass	
3	Save & Exit Setup	Pass	
4	Date & Time Setting	Pass	
5	Drive A	Pass	
6	Audio Function	Pass	
7	Quick Power On Self Test	Pass	
8	Boot Device Setting	Pass	
9	Boot Up Floppy Seek	Pass	
10	Boot Up Num Lock Status	Pass	
11	Boot Display	Pass	
12	LCD TYPE	Pass	
13	On Chip Primary IDE	Pass	
14	On Chip Secondary IDE	Pass	
15	ACPI Suspend Type	Pass	
16	Halt On	Pass	
17	Onboard Serial Port	Pass	
18	USB Controller	Pass	
19	USB Keyboard Support	Pass	
20	USB KB Wake-up From S3	Pass	
21	Onboard FDC Controller	Pass	
22	Soft-Off by PWRBTN	Pass	
23	Power On Function	Pass	
24	KB Power ON Password	Pass	
25	Hot Key Password	Pass	
26	ACPI Function	Pass	

28	Resume by Alarm	Pass	
29	Watch Dog Timer Select	Pass	
30	Init Display First	Pass	
31	Onboard Parallel Port	Pass	
32	PWRON After PWR-Fail	Pass	
33	Power On by Ring	Pass	
34	Set Supervisor Password	Pass	
35	Set User Password	Pass	
36	UART Mode Select	Pass	
37	RxD , Txd Active	Pass	
38	IR Transmission Delay	Pass	
39	UR2 duplex Mode	Pass	
40	Use IR Pins	Pass	
41	Wake-up by PCI card	Pass	

1.3 Driver

1. Windows XP SP2 Driver Test

	Description	Result	Remark
1	Chip set Driver	Pass	
2	VGA Driver	Pass	
3	Audio Driver	Pass	
4	LAN Driver	Pass	

2. Compatibility test

2.1 CPU Test

Processor: Intel T1400 1.83 GHZ

O.S: MS-DOS 6.22

Item	Description	Result	Remark
1	CPU Type Detect	Pass	
2	CPU Speed Detect	Pass	
3	OS Running Stability	Pass	

Windows 2003 Server

Item	Description	Result	Remark
1	CPU Type Detect	Pass	
2	CPU Speed Detect	Pass	
3	OS Running Stability	Pass	

Windows XP

Item	Description	Result	Remark
1	CPU Type Detect	Pass	
2	CPU Speed Detect	Pass	
3	OS Running Stability	Pass	

Processor: Intel T7400 2.16 GHZ

O.S: MS-DOS 6.22

Item	Description	Result	Remark
1	CPU Type Detect	Pass	
2	CPU Speed Detect	Pass	
3	OS Running Stability	Pass	

Windows 2003 Server

Item	Description	Result	Remark
1	CPU Type Detect	Pass	
2	CPU Speed Detect	Pass	
3	OS Running Stability	Pass	

Windows XP

Item	Description	Result	Remark
1	CPU Type Detect	Pass	
2	CPU Speed Detect	Pass	
3	OS Running Stability	Pass	

Processor: Intel T2300 1.66 GHZ

O.S: MS-DOS 6.22

Item	Description	Result	Remark
1	CPU Type Detect	Pass	
2	CPU Speed Detect	Pass	
3	OS Running Stability	Pass	

Windows 2003 Server

Item	Description	Result	Remark
1	CPU Type Detect	Pass	
2	CPU Speed Detect	Pass	
3	OS Running Stability	Pass	

Windows XP

Item	Description	Result	Remark
1	CPU Type Detect	Pass	
2	CPU Speed Detect	Pass	
3	OS Running Stability	Pass	

2.2 Memory Test

1. APACER DDRII 533 1G(K4T51083QB-ZKD5)

Item	Description	Result	Remark
1	Boot	Pass	
2	MS-DOS 6.22	Pass	
3	Windows 2003 Server	Pass	
4	Windows XP	Pass	

2. Rdata DDRII 667 1GB (Rdata AD29608A8A -3EG)

Item	Description	Result	Remark
1	Boot	Pass	
2	MS-DOS 6.22	Pass	
3	Windows 2003 Server	Pass	
4	Windows XP	Pass	

3. TwinMOS DDRII 512MB (SAMSUNC K4T510830B)

Item	Description	Result	Remark
1	Boot	Pass	
2	MS-DOS 6.22	Pass	
3	Windows 2003 Server	Pass	
4	Windows XP	Pass	

4. Kingston KVR667D2N5/1G (ELPIDA E5108AE-6E-E)

Item	Description	Result	Remark
1	Boot	Pass	
2	MS-DOS 6.22	Pass	
3	Windows 2003 Server	Pass	
4	Windows XP	Pass	

4. Transcend DDRII 2G (ELPIDA E1108AA-5C-E)

Item	Description	Result	Remark
1	Boot	Pass	
2	MS-DOS 6.22	Pass	
3	Windows 2003 Server	Pass	
4	Windows XP	Pass	

2.3 VGA Graphic Test

1. Windows XP

Item	Description	Result	Remark
1	Driver Install	Pass	
2	Resolution/Color Change	Pass	
3	Dual View Test	Pass	With LVDS LCD PANEL
4	CRT Display Test	Pass	
5	CRT Display Quality Test	Pass	

2.4 Audio Test

1. Windows 2003 Server

Item	Description	Result	Remark
1	Driver Install	Pass	
2	Speaker Left	Pass	
3	Speaker Right	Pass	
4	Sound Effect	Pass	
5	Equalizer	Pass	
6	Microphone	Pass	

2. Windows XP

Item	Description	Result	Remark
1	Driver Install	Pass	
2	Speaker Left	Pass	
3	Speaker Right	Pass	
4	Sound Effect	Pass	
5	Equalizer	Pass	
6	Microphone	Pass	

2.5 HDD Test

Model: Seagate ST380011A 80G

1. MS-DOS 6.22

Item	Description	Result	Remark
1	HDD Size Detect	Pass	
2	HDD Read/Write	Pass	
3	HDD Partition/Format	Pass	
4	HDD LED Check	Pass	

2. Windows 2003 Server

Item	Description	Result	Remark
1	HDD Detect	Pass	
2	HDD Read/Write	Pass	
3	HDD Data Transfer	Pass	
4	HDD Format	Pass	
5	HDD LED Check	Pass	

3. Windows XP

Item	Description	Result	Remark
1	HDD Detect	Pass	
2	HDD Read/Write	Pass	
3	HDD Data Transfer	Pass	
4	HDD Format	Pass	
5	HDD LED Check	Pass	

Model: Seagate ST3250620AS 250GB

1. MS-DOS 6.22

Item	Description	Result	Remark
1	HDD Size Detect	Pass	
2	HDD Read/Write	Pass	
3	HDD Partition/Format	Pass	
4	HDD LED Check	Pass	

2. Windows 2003 Server

Item	Description	Result	Remark
1	HDD Detect	Pass	
2	HDD Read/Write	Pass	
3	HDD Data Transfer	Pass	
4	HDD Format	Pass	
5	HDD LED Check	Pass	

3. Windows XP

Item	Description	Result	Remark
1	HDD Detect	Pass	
2	HDD Read/Write	Pass	
3	HDD Data Transfer	Pass	
4	HDD Format	Pass	
5	HDD LED Check	Pass	

Model: Western Digital WD3000JS-22PDB0 300G(SATA)

1. MS-DOS 6.22

Item	Description	Result	Remark
1	HDD Size Detect	Pass	
2	HDD Read/Write	Pass	
3	HDD Partition/Format	Pass	
4	HDD LED Check	Pass	

2. Windows 2003 Server

Item	Description	Result	Remark
1	HDD Detect	Pass	
2	HDD Read/Write	Pass	
3	HDD Data Transfer	Pass	
4	HDD Format	Pass	
5	HDD LED Check	Pass	

3. Windows XP

Item	Description	Result	Remark
1	HDD Detect	Pass	
2	HDD Read/Write	Pass	
3	HDD Data Transfer	Pass	
4	HDD Format	Pass	
5	HDD LED Check	Pass	

2.6 USB Test

1. Windows 2003 Server

Item	Description	Result	Remark
1	Device Manager Check	Pass	
2	External USB Keyboard Test	Pass	
3	External USB Mouse Test	Pass	
4	Hot plugging test	Pass	

2. Windows XP

Item	Description	Result	Remark
1	Device Manager Check	Pass	
2	External USB Keyboard Test	Pass	
3	External USB Mouse Test	Pass	
4	Hot plugging test	Pass	

2.7 Serial Port Test

1. Windows XP

Item	Description	Result	Remark
1	Device Manager Check	Pass	
2	Driver Install	Pass	
3	RS-232 Mouse Test (PNP)	Pass	
4	RS-232 Modem Test (PNP)	Pass	
5	B&B Electronics COM Port RS-232 Test (W/Loop-Back)	Pass	

2.8 IrDA Test

2. Windows XP

Item	Description	Result	Remark
1	Device Manager Check	Pass	
2	SIR Mode Data Transfer Test	Pass	
3	SIR Data Transfer Quality Test	Pass	
4	SIR Loop-Back Test	Pass	

2.9 Keyboard Test

1. MS-DOS 6.22

Item	Description	Result	Remark
1	Keyboard LED Status Test	Pass	
2	Keyboard Command Test	Pass	
3	Keyboard Typing Test	Pass	

2. Windows 2003 Server

Item	Description	Result	Remark
1	Device Manager Check	Pass	
2	Keyboard LED Status Test	Pass	
3	Keyboard Typing Test	Pass	

3. Windows XP

Item	Description	Result	Remark
1	Device Manager Check	Pass	
2	Keyboard LED Status Test	Pass	
3	Keyboard Typing Test	Pass	

4. Linux "Suse 10"

Item	Description	Result	Remark
1	Device Manager Check	Pass	
2	Keyboard LED Status Test	Pass	
3	Keyboard Typing Test	Pass	

5. Linux "Fedora Core5"

Item	Description	Result	Remark
1	Device Manager Check	Pass	
2	Keyboard LED Status Test	Pass	
3	Keyboard Typing Test	Pass	

2.10 Mouse Test

1. Windows 2003 Server

Item	Description	Result	Remark
1	Device Manager Check	Pass	
2	Mouse Detect Test (PNP)	Pass	

2. Windows XP

Item	Description	Result	Remark
1	Device Manager Check	Pass	
2	Mouse Detect Test (PNP)	Pass	

3. Linux "Suse 10.0"

Item	Description	Result	Remark
1	Device Manager Check	Pass	
2	Mouse Detect Test (PNP)	Pass	

4. Linux "Fedora Core5"

Item	Description	Result	Remark
1	Device Manager Check	Pass	
2	Mouse Detect Test (PNP)	Pass	

2.11 LAN Module Test

1. Windows XP

Item	Description	Result	Remark
1	LAN Module Install Test	Pass	
2	Driver Install	Pass	
3	Device Manager Check	Pass	
4	Data Transfer Test	Pass	

2. Windows 2003 Server Standard Edition

Item	Description	Result	Remark
1	LAN Module Install Test	Pass	
2	Driver Install	Pass	
3	Device Manager Check	Pass	
4	Data Transfer Test	Pass	

2.12 Power Supply Test

1. MS-DOS 6.22

Item	Description	Verification	
		Result	Remark
1	ATX Power On/Off	Pass	SEVENTEAM ST-300WP
2	ATX Power On/Off	Pass	HEC Windmill PRO 315W
3.	ATX Power On/Off	Pass	Seven team ST-300BLV(300W)

2. Windows 2003

Item	Description	Verification	
		Result	Remark
1	ATX Power On/Off	Pass	SEVENTEAM ST-300WP
2	ATX Power On/Off	Pass	HEC Windmill PRO 315W
3	ATX Power On/Off	Pass	Seven team ST-300BLV(300W)

3. Windows XP

Item	Description	Verification	
		Result	Remark
1	ATX Power On/Off	Pass	SEVENTEAM ST-300WP
2	ATX Power On/Off	Pass	HEC Windmill PRO 315W
3	ATX Power On/Off	Pass	Seven team ST-300BLV(300W)

4. Linux "Suse 10.0"

Item	Description	Verification	
		Result	Remark
1	ATX Power On/Off	Pass	SEVENTEAM ST-300WP
2	ATX Power On/Off	Pass	HEC Windmill PRO 315W
3	ATX Power On/Off	Pass	Seven team ST-300BLV(300W)

5. Linux "Fedora

Item	Description	Verification	
		Result	Remark
1	ATX Power On/Off	Pass	SEVENTEAM ST-300WP
2	ATX Power On/Off	Pass	HEC Windmill PRO 315W
3	ATX Power On/Off	Pass	Seven team ST-300BLV(300W)

2.13 CD-ROM Test

Model: SYNEX COM-5216

1. MS-DOS 6.22

Item	Description	Result	Remark
1	CD-ROM Detect	Pass	
2	CD-ROM Read	Pass	
3	CD-ROM Bootable	Pass	
4	CD-ROM Data Transfer	Pass	

2. Windows 2003 Server

Item	Description	Result	Remark
1	CD-ROM Detect	Pass	
2	CD-ROM Read	Pass	
3	CD-ROM Data Transfer	Pass	

3. Windows XP

Item	Description	Result	Remark
1	CD-ROM Detect	Pass	
2	CD-ROM Read	Pass	
3	CD-ROM Data Transfer	Pass	

Model: LITEON SOSW-833SX(USB)

1. MS-DOS 6.22

Item	Description	Result	Remark
1	CD-ROM Detect	Pass	
2	CD-ROM Read	Pass	
3	CD-ROM Bootable	Pass	
4	CD-ROM Data Transfer	Pass	

2. Windows 2003 Server

Item	Description	Result	Remark
1	CD-ROM Detect	Pass	
2	CD-ROM Read	Pass	
3	CD-ROM Data Transfer	Pass	

3. Windows XP

Item	Description	Result	Remark
1	CD-ROM Detect	Pass	
2	CD-ROM Read	Pass	
3	CD-ROM Data Transfer	Pass	

Model: BENQ CB523C

1. MS-DOS 6.22

Item	Description	Result	Remark
1	CD-ROM Detect	Pass	
2	CD-ROM Read	Pass	
3	CD-ROM Bootable	Pass	
4	CD-ROM Data Transfer	Pass	

2. Windows 2003 Server

Item	Description	Result	Remark
1	CD-ROM Detect	Pass	
2	CD-ROM Read	Pass	
3	CD-ROM Data Transfer	Pass	

3. Windows XP

Item	Description	Result	Remark
1	CD-ROM Detect	Pass	
2	CD-ROM Read	Pass	
3	CD-ROM Data Transfer	Pass	

2.14 Floppy Drive Test

Model: TEAC FD-05HG

1. MS-DOS 6.22

Item	Description	Result	Remark
1	Floppy Drive Detect	Pass	
2	Floppy Read/Write	Pass	
3	Boot from Floppy	Pass	
4	Floppy Data Transfer	Pass	

2. Windows 2003 Server

Item	Description	Result	Remark
1	Floppy Drive Detect	Pass	
2	Floppy Read/Write	Pass	
3	Floppy Data Transfer	Pass	

3. Windows XP

Item	Description	Result	Remark
1	Floppy Drive Detect	Pass	
2	Floppy Read/Write	Pass	
3	Floppy Data Transfer	Pass	

Model: MITSUMI D353GUE(USB)

1. MS-DOS 6.22

Item	Description	Result	Remark
1	Floppy Drive Detect	Pass	
2	Floppy Read/Write	Pass	
3	Boot from Floppy	Pass	
4	Floppy Data Transfer	Pass	

2. Windows 2003 Server

Item	Description	Result	Remark
1	Floppy Drive Detect	Pass	
2	Floppy Read/Write	Pass	
3	Floppy Data Transfer	Pass	

3. Windows XP

Item	Description	Result	Remark
1	Floppy Drive Detect	Pass	
2	Floppy Read/Write	Pass	
3	Floppy Data Transfer	Pass	

2.15 Printer Port Test

1. Windows XP

Item	Description	Result	Remark
1	ECP/EPP PRINT TEST	Pass	

2. Windows 2003 Server

Item	Description	Result	Remark
1	ECP/EPP PRINT TEST	Pass	

2.16 Boot Up Test

Item	Description	Result	Remark
1	Soft boot from HDD	Pass	
2	Soft boot from CD-ROM	Pass	
3	Reboot test with Win 2003 Server	Pass	
4	Reboot test with Win XP	Pass	

2.17 Os Install

Item	Description	Result	Remark
1	Windows XP SP2	Pass	
2	Linux "Fedora	Pass	
3	Windows 2003 Server Standard Edition	Pass	
4	Linux "Suse 10"	Pass	

3. Environmental test

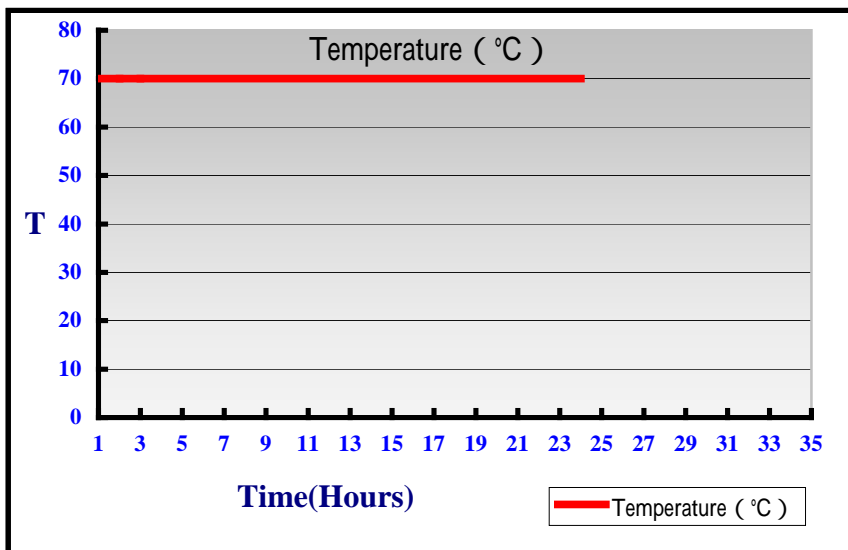
3.1 Temperature Test

Hardware Device list:

System Board	LS-570
CPU	Intel T2300 1.66 GHZ
Memory	Kingston KVR667D2N5/1G (ELPIDA E5108AE-6E-E)
HDD	Western Digital WD2500JB-00REA0 250GB
KEYBOARD	KRONE K9810
MOUSE	DCS USBMOUSE
Test Equipment	THERMOTRON 2800 Programmer/Controller
Test Program	3DMARK 2003

Test Result:

Item	Description	Result	Remark
1	70°C RUN 3Dmark03	Pass	
2	-20°C Boot Test	Pass	50 Times
3	70°C Boot Test	Pass	50 Times



4. Reliability Test

4.1 Power Consumption Test

1.Test Environment:

Motherboard	LS-570
CPU	INTEL CORE 2/ T7400 / 2.16 GHZ
Memory	Transcend DDRII 2GB (ELPIDA E1108AA-5C-E)
Power Supply	Seven team ST-300BLV(300W)

Voltage	Current (A)	Power (W)	Remark
12V	2.49	29.88	Boot Up
5V	2.98	14.9	Boot Up
3.3V	1.02	3.366	Boot Up

2.Test Environment:

CPU	Intel T7400 2.16 GHZ
Memory	Rdata DDRII 667 1GB (Rdata AD29608A8A -3EG) TwinMOS DDRII 512MB (SAMSUNC K4T510830B)
HDD	Western Digital WD3000JS-22PDB0 300GB(SATA)
Test OS	Windows XP
Test Program	3DMARK 2003

Test Result:

Voltage	Current (A)	Power (W)	Remark
5V	3.65	18.25	
12V	2.06	24.72	
3.3V	1.05	3.465	

3.Test Environment:

CPU	Intel T7400 2.16 GHZ
Memory	Rdata DDRII 667 1GB (Rdata AD29608A8A -3EG) TwinMOS DDRII 512MB (SAMSUNC K4T510830B
17" Panel	AUO M170EG01
HDD	Western Digital WD3000JS-22PDB0 300GB(SATA)
Test OS	Windows XP
Test Program	3DMARK 2003

Test Result:

Voltages	Current (A)	Power (W)	Remark
5V	4.49	22.45	
12V	3.85	46.2	
3.3V	1.05	3.465	

4.Test Environment:

CPU	Intel T7400 2.16 GHZ
Memory	Rdata DDRII 667 1GB (Rdata AD29608A8A -3EG) APACER DDRII 533 1G(K4T51083QB-ZKD5)
HDD	Western Digital WD3000JS-22PDB0 300GB(SATA)
17" Pannel	AUO M170EG01
Test OS	Windows XP
Test Program	3DMARK 2003

Test Result:

Voltage	Current (A)	Power (W)	Remark
5V	5.07	25.35	
12V	3.77	45.24	
3.3V	1.04	3.432	

5.Test Environment:

CPU	Intel T7400 2.16 GHZ
Memory	Rdata DDRII 667 1GB (Rdata AD29608A8A -3EG) APACER DDRII 533 1G(K4T51083QB-ZKD5)
HDD	Western Digital WD3000JS-22PDB0 300GB(SATA)
17" Pannel	AUO M170EG01
CDROM	LITEON DVD SOSW-833SX(USB)
Test OS	Windows XP
Test Program	3DMARK 2003

Test Result:

Voltage	Current (A)	Power (W)	Remark
5V	5.11	25.55	
12V	3.75	45	
3.3V	1.04	3.432	

6.Test Environment:

CPU	Intel T7400 2.16 GHZ
Memory	TWINMS DDRII 667 512MB (SAMSUNO K4T51083QB-GCD5) BUFFALO DDRII 533 512MB(ME47512845EGXP)
HDD1	Western Digital WD3000JS-22PDB0 300GB(SATA)
HDD2	Seagate ST380011A 80G
FDD	MITSUMI D353GUE
CDROM	SYNNEX LCD-5200S
Test OS	Windows XP
Test Program	3DMARK 2003

Test Result:

Voltage	Current (A)	Power (W)	Remark
5V	3.96	19.8	
12V	2.11	25.32	
3.3V	1.06	3.498	

7.Test Environment:

CPU	Intel T7400 2.16 GHZ
Memory	TWINMS DDRII 667 512MB (SAMSUNO K4T51083QB-GCD5) Rdata DDRII 667 1GB (Rdata AD29608A8A -3EG)
HDD1	Western Digital WD3000JS-22PDB0 300GB(SATA)
HDD2	Seagate ST380011A 80G
FDD	MITSUMI D353GUE
Mini-PCI WLAN	D-LANK DFE-5300TX
CDROM	LITEON SOSW-833SX(USB)
Test OS	Windows XP
Test Program	3DMARK 2003

Test Result:

Voltage	Current (A)	Power (W)	Remark
5V	3.7	18.5	
12V	2.14	25.68	
3.3V	1.04	3.432	

8.Test Environment:

CPU	Intel / MEROM T5600/1.83 GHZ
Memory	APACER DDRII 533 1G(K4T51083QB-ZKD5)
17" PANEL	AUO M170EG01
HDD1	Seagate ST380011A 80G
HDD2	Western Digital WD3000JS-22PDB0 300GB(SATA)
FDD	SONY MPF920-E
Mini-PCI WLAN	REALTEK RRTL8180L
CDROM	BENQ CB523C
Test OS	Windows XP
Test Program	3DMARK 2003

Test Result:

Voltage	Current (A)	Power (W)	Remark
5V	4.87	24.35	
12V	3.89	46.68	
3.3V	1.04	3.342	

9.Test Environment:

CPU	Intel / T2300/1.66 GHZ
Memory	APACER DDRII 533 1G(K4T51083QB-ZKD5) Kingston KVR667D2N5/1G (ELPIDA E5108AE-6E-E)
17" PANEL	AUO M170EG01
HDD1	Western Digital WD3000JS-22PDB0 300GB(SATA)
CDROM	BENQ CB523C
Test OS	Windows XP
Test Program	3DMARK 2003

Test Result:

Voltage	Current (A)	Power (W)	Remark
5V	1.66	8.3	
12V	4.43	53.16	

Power Consumption Test 2 (DC Input)

1.Test Environment:

Motherboard	LS-570
CPU	INTEL CORE 2/ T7400 / 2.16 GHZ
Memory	Transcend DDRII 2G (ELPIDA E1108AA-5C-E)
Power Supply	Instek Model:PSP-2010 199w

Voltage	Max Current (A)	Power (W)	Remark
12V	0.1	1.2	StandBy Power

Voltage	Max Current (A)	Power (W)	emark
12V	2.7	32.4	Boot (In Post Screen)

Voltage	Max Current (A)	Power (W)	Remark
12V	4.01	48.12	Boot (Max Power)

2.Test Environment:

Motherboard	LS-570
CPU	INTEL CORE 2/ T7400 / 2.16 GHZ
Memory	Kingston KVR667D2N5/1G (ELPIDA E5108AE-6E-E)
Power Supply	Instek Model:PSP-2010 199w

Voltage	Max Current (A)	Power (W)	Remark
12V	0.1	1.2	StandBy Power

Voltage	Max Current (A)	Power (W)	Remark
12V	2.6	31.2	Boot (In Post Screen)

Voltage	Max Current (A)	Power (W)	Remark
12V	4.0	48	Boot (Max Power)

3.Test Environment:

Motherboard	LS-570
CPU	INTEL CORE 2/ T7400 / 2.16 GHZ
Memory	Transcend DDRII 2G (ELPIDA E1108AA-5C-E)
HDD	Western Digital WD3000JS-22PDB0 300GB(SATA)
CD-ROM	LITEON SOSW-833SX(USB)
Power Supply	Seven team ST-300BLV(300W)
Operating System	Windows XP SP2
Test Program	3DMark 2003

Voltage	Max Current (A)	Power (W)	Remark
12V	4.81	57.72	

4.Test Environment:

Motherboard	LS-570
CPU	INTEL CORE 2/ T7400 / 2.16 GHZ
Memory	Transcend DDRII 2G (ELPIDA E1108AA-5C-E)
HDD	Western Digital WD3000JS-22PDB0 300GB(SATA)
CD-ROM	LITEON SOSW-833SX(USB)
Power Supply	Seven team ST-300BLV(300W)
Operating System	Windows XP SP2

Voltage	Current (A)	Power (W)	Remark
12V	2.52	30.24	Do nothing

5.Test Environment:

Motherboard	LS-570
CPU	INTEL CORE 2/ T7400 / 2.16 GHZ
Memory	Transcend DDRII 2G (ELPIDA E1108AA-5C-E)
HDD	Western Digital WD3000JS-22PDB0 300GB(SATA)
CD-ROM	LITEON SOSW-833SX(USB)
Power Supply	Seven team ST-300BLV(300W)
Operating System	Windows XP SP2
Test Program	3DMark 2003

Voltage	Max Current (A)	Power (W)	Remark
12V	2.54	30.48	

6.Test Environment:

Motherboard	LS-570
CPU	INTEL CORE 2/ T7400 / 2.16 GHZ
Memory	Transcend DDRII 2G (ELPIDA E1108AA-5C-E)
HDD	Western Digital WD3000JS-22PDB0 300GB(SATA)
CD-ROM	LITEON SOSW-833SX(USB)
Power Supply	Seven team ST-300BLV(300W)
Operating System	Windows XP SP2

Voltage	Max Current (A)	Power (W)	Remark
12V	1.34	16.08	Do nothing

7.Test Environment:

Motherboard	LS-570
CPU	INTEL CORE 2/ T7400 / 2.16 GHZ
Memory	Transcend DDRII 2G (ELPIDA E1108AA-5C-E) Rdata DDRII 667 1GB (Rdata AD29608A8A -3EG)
HDD	Western Digital WD3000JS-22PDB0 300GB(SATA)
CD-ROM	LITEON SOSW-833SX(USB)
Power Supply	Seven team ST-300BLV(300W)
Operating System	Windows XP SP2
Test Program	3DMark 2003

Voltage	Max Current (A)	Power (W)	Remark
12V	2.69	32.28	

8.Test Environment:

Motherboard	LS-570
CPU	INTEL CORE 2/ T7400 / 2.16 GHZ
Memory	Transcend DDRII 2G (ELPIDA E1108AA-5C-E) Rdata DDRII 667 1GB (Rdata AD29608A8A -3EG)
HDD	Western Digital WD3000JS-22PDB0 300GB(SATA)
CD-ROM	LITEON SOSW-833SX(USB)
LVDS Pannel	AUO M170EG01 17"
Power Supply	Seven team ST-300BLV(300W)
Operating System	Windows XP SP2
Test Program	3DMark 2003

Voltage	Max Current (A)	Power (W)	Remark
12V	4.03	48.36	

9.Test Environment:

Motherboard	LS-570
CPU	INTEL CORE 2/ T7400 / 2.16 GHZ
Memory	Transcend DDRII 2G (ELPIDA E1108AA-5C-E)
HDD	Western Digital WD3000JS-22PDB0 300GB(SATA)
Power Supply	Instek Model:PSP-2010 199w
Operating System	Windows XP SP2
Test Program	3Dmark 2003

Voltage	Current (A)	Power (W)	Remark
8V	8.13	65.04	
12V	4.94	59.28	
19V	3.06	58.14	

4.2 Thermal measurements at various points on the board

Test Environment A:

CPU	Intel / MEROM T5600/1.83 GHZ
Memory	Adata DDRII 667 1GB (Adata E5108AB-6E-E)
17" PANEL	AUO M170EG01
HDD1	Seagate ST380011A 80G
HDD2	Seagate ST3250620AS 250GB
FDD	MITSUMI D353GUE
Mini-PCI WLAN	REALTEK RRTL8180L
CDROM	BENQ CB523C
Test OS	Windows XP
Test Program	3DMARK 2003

Test Result:

CPU	38.9
NB	46.3
SB	46.6
U9	59.9
D3	45.9
U4	42.1
Q19	42

Test Environment B:

CPU	Intel / MEROM T5600/1.83 GHZ
Memory	Adata DDRII 667 1GB (Adata E5108AB-6E-E) Kingston KVR667D2N5/1G (ELPIDA E5108AE-6E-E)
17" PANEL	AUO M170EG01
HDD1	Seagate ST380011A 80G
HDD2	Western Digital WD3000JS-22PDB0 300GB(SATA)
FDD	MITSUMI D353GUE
Mini-PCI WLAN	REALTEK RRTL8185L
CDROM	BENQ CB523C
Test OS	Windows XP
Test Program	3DMARK 2003

Test Result:

CPU	41.1
NB	44.9
SB	50.9
U9	65.9
D3	45.3
U12	46.4
U8	48.8
U10	51.4
U11	48.2
Q8	49.3

Test Environment C:

CPU	Intel / T2300/1.66 GHZ
Memory	Adata DDRII 667 1GB (Adata E5108AB-6E-E) Kingston KVR667D2N5/1G (ELPIDA E5108AE-6E-E)
17" PANEL	AUO M170EG01
HDD1	Seagate ST380011A 80G
HDD2	Western Digital WD3000JS-22PDB0 300GB(SATA)
FDD	MITSUMI D353GUE
Mini-PCI WLAN	REALTEK RRTL8185L
CDROM	BENQ CB523C
Test OS	Windows XP
Test Program	3DMARK 2003

Test Result:

CPU	37.9
NB	42.8
SB	53.4
U9	64.9
D3	44.9
U12	43.9
U8	47.8
U10	51.8
U11	48.3
Q8	48.4

5. Performance Test

5.1 Content Creation WinStone 2001

1.Windows XP

WEIGHTED SUITE	Test Environment	Result	Remark
Content Creation Winstone 2001	Intel T1400/1.83 GHZ APACER DDRII 533 1G(K4T51083QB-ZKD5) Seagate ST380011A-314 80G	Pass	151.3 151.3
Content Creation Winstone 2001	Intel T7400 2.16 GHZ TWINMS DDRII 667 512MB (SAMSUN0 K4T51083QB-GCD5) Rdata DDRII 667 1GB (Rdata AD29608A8A -3EG) Western Digital WD3000JS-22PDB0 300GB(SATA)	Pass	131.9 135.1 134.1 135.1 131.9
Content Creation Winstone 2001	Intel T2300 1.66 GHZ Kingston KVR667D2N5/1G (ELPIDA E5108AE-6E-E) Western Digital WD3000JS-22PDB0 300GB(SATA))	Pass	101.9 112.4 114.1 113.9 113.1

5.2 Business WinStone 2002

1.Windows XP

WEIGHTED SUITE	Test Environment	Result	Remark
Business WinStone 2002	Intel T1400/1.83 GHZ APACER DDRII 533 1G(K4T51083QB-ZKD5) Seagate ST380011A-314 80G	Pass	30.4 35.8 34.6 34.9 30.5
Business WinStone 2002	Intel T1400/1.83 GHZ Rdata DDRII 667 1GB (Rdata AD29608A8A -3EG) Seagate ST380011A-314 80G)	Pass	34.6 34.9 34.9 34.3 34.2
Business WinStone 2002	Intel T7400/2.16 GHZ Rdata DDRII 667 1GB (Rdata AD29608A8A -3EG) TwinMOS DDRII 512MB (SAMSUNC K4T510830B Seagate ST380011A-314 80G	Pass	37.9 37.9 37.4 37.1 36.7

5.3 Business WinStone 2004

1.Windows XP

WEIGHTED SUITE	Test Environment	Result	Remark
Business WinStone 2004	Intel T1400/1.83 GHZ APACER DDRII 533 1G(K4T51083QB-ZKD5) Seagate ST380011A-314 80G	Pass	18.1 9.1 20.1 13.5 14.1
Business WinStone 2004	Intel T2300 1.66 GHZ Kingston KVR667D2N5/1G (ELPIDA E5108AE-6E-E) Western Digital WD3000JS-22PDB0 300GB(SATA))	Pass	19.1 9.2 18.5 9.3 17

5.4 Multimedia Content Creation Winstone 2003

Windows XP

WEIGHTED SUITE	Test Environment	Result	Remark
Multimedia Content Creation Winstone 2003	I Intel T1400/1.83 GHZ	Pass	48.9
	APACER DDRII 533		50.4
	1G(K4T51083QB-ZKD5)		50.4
	Western Digital		50.1
	WD3000JS-22PDB0 300GB		50.3

WEIGHTED SUITE	Test Environment	Result	Remark
Multimedia Content Creation Winstone 2003	Intel T7400 2.16 GHZ	Pass	64.8
	TWINMS DDRII 667 512MB		68.8
	(SAMSUN0 K4T51083QB-GCD5)		69.6
	Rdata DDRII 667 1GB (Rdata		69.9
	AD29608A8A -3EG)		69.8
Western Digital WD3000JS-22PDB0 300GB(SATA)			

5.5 Multimedia Content Creation Winstone 2004

1.Windows XP

0WEIGHTED SUITE	Test Environment	Result	Remark
Multimedia Content Creation Winstone 2004	I Intel T1400/1.83 GHZ APACER DDRII 533 1G(K4T51083QB-ZKD5) Western Digital WD3000JS-22PDB0 300GB	Pass	29.5 29.5 29.5 29.5
Multimedia Content Creation Winstone 2004	Intel T7400 2.16 GHZ TWINMS DDRII 667 512MB (SAMSUN0 K4T51083QB-GCD5) Rdata DDRII 667 1GB (Rdata AD29608A8A -3EG) Western Digital WD3000JS-22PDB0 300GB(SATA)	Pass	38.3 38 38.1 38.4 38.1x
Multimedia Content Creation Winstone 2004	Intel T2300 1.66 GHZ Kingston KVR667D2N5/1G (ELPIDA E5108AE-6E-E) Western Digital WD3000JS-22PDB0 300GB(SATA)	Pass	26.7 29.3 29.4 29.2 29.3

2.Windows Server 2003

WEIGHTED SUITE	Test Environment	Result	Remark
Multimedia Content Creation Winstone 2004	Intel T7400 2.16 GHZ TWINMS DDRII 667 512MB (SAMSUN0 K4T51083QB-GCD5) Rdata DDRII 667 1GB (Rdata AD29608A8A -3EG) Western Digital WD3000JS-22PDB0 300GB(SATA)	Pass	39.6 40.2 40 40.1 40.3

5.6 3D MARK

Test Environment
Intel T1400/1.83 GHZ APACER DDRII 533 1G(K4T51083QB-ZKD5) Seagate ST380011A-314 80G

Windows XP

Item	WEIGHTED SUITE	Result	Remark
1	3DMARK2003 Scores	Pass	1076
2	3DMARK2005 Scores	Pass	407
3	3DMARK2006 Scores	Pass	146

Test Environment
Intel T1400/1.83 GHZ Rdata DDRII 667 1GB (Rdata AD29608A8A -3EG) Seagate ST380011A-314 80G

Windows XP

Item	WEIGHTED SUITE	Result	Remark
1	3DMARK2003 Scores	Pass	1070
2	3DMARK2005 Scores	Pass	406
3	3DMARK2006 Scores	Pass	116

Test Environment
<p>Intel T7400/2.16 GHZ</p> <p>Rdata DDRII 667 1GB (Rdata AD29608A8A -3EG)</p> <p>Seagate ST380011A-314 80G</p>

Windows XP

Item	WEIGHTED SUITE	Result	Remark
1	3DMARK2003 Scores	Pass	1132
2	3DMARK2005 Scores	Pass	432
3	3DMARK2006 Scores	Pass	126

Test Environment
<p>Intel T7400/2.16 GHZ</p> <p>Rdata DDRII 667 1GB (Rdata AD29608A8A -3EG)</p> <p>TwinMOS DDRII 512MB (SAMSUNC K4T510830B)</p> <p>Western Digital WD3000JS-22PDB0 300GB(SATA)</p>

Windows XP

Item	WEIGHTED SUITE	Result	Remark
1	3DMARK2003 Scores	Pass	1140
2	3DMARK2005 Scores	Pass	435
3	3DMARK2006 Scores	Pass	123

Test Environment
Intel T7400 2.16 GHZ TWINMS DDRII 667 512MB (SAMSUN0 K4T51083QB-GCD5) Rdata DDRII 667 1GB (Rdata AD29608A8A -3EG) Western Digital WD3000JS-22PDB0 300GB(SATA)

Windows XP

Item	WEIGHTED SUITE	Result	Remark
1	3DMARK2003 Scores	Pass	1174
2	3DMARK2005 Scores	Pass	471
3	3DMARK2006 Scores	Pass	170

Test Environment
Intel T2300 1.66 GHZ APACER DDRII 533 1G(K4T51083QB-ZKD5) Kingston KVR667D2N5/1G (ELPIDA E5108AE-6E-E) Western Digital WD3000JS-22PDB0 300GB(SATA)

Windows XP

Item	WEIGHTED SUITE	Result	Remark
1	3DMARK2003 Scores	Pass	1200
2	3DMARK2005 Scores	Pass	485
3	3DMARK2006 Scores	Pass	179

5.7 PCMARK 2002

Test Environment
Intel T1400/1.83 GHZ APACER DDRII 533 1G(K4T51083QB-ZKD5) Seagate ST380011A-314 80G

Windows XP

Item	WEIGHTED SUITE	Result	Remark
1	CPU test Source	Pass	6247
2	Memory test Source	Pass	13735
3	HDD test Source	Pass	740

Test Environment
Intel T7400 2.16 GHZ TWINMS DDRII 667 512MB (SAMSUN0 K4T51083QB-GCD5) Rdata DDRII 667 1GB (Rdata AD29608A8A -3EG) Western Digital WD3000JS-22PDB0 300GB(SATA)

Windows XP

Item	WEIGHTED SUITE	Result	Remark
1	CPU test Source	Pass	8516
2	Memory test Source	Pass	26518
3	HDD test Source	Pass	1320

Test Environment
Intel T1400/1.83 GHZ Rdata DDRII 667 1GB (Rdata AD29608A8A -3EG) Seagate ST380011A-314 80G

Windows XP

Item	WEIGHTED SUITE	Result	Remark
1	CPU test Source	Pass	6256
2	Memory test Source	Pass	14126
3	HDD test Source	Pass	648

Test Environment
Intel T5600/1.83 GHZ Rdata DDRII 667 1GB (Rdata AD29608A8A -3EG) Seagate ST380011A-314 80G

Windows XP

Item	WEIGHTED SUITE	Result	Remark
1	CPU test Source	Pass	7205
2	Memory test Source	Pass	15000
3	HDD test Source	Pass	635

Test Environment
Intel T7400/2.16 GHZ Rdata DDRII 667 1GB (Rdata AD29608A8A -3EG) Seagate ST380011A-314 80G

Windows XP

Item	WEIGHTED SUITE	Result	Remark
1	CPU test Source	Pass	8501
2	Memory test Source	Pass	26659
3	HDD test Source	Pass	634

Test Environment
Intel T7400/2.16 GHZ Rdata DDRII 667 1GB (Rdata AD29608A8A -3EG) TwinMOS DDRII 512MB (SAMSUNC K4T510830B) Seagate ST380011A-314 80G

Windows XP

Item	WEIGHTED SUITE	Result	Remark
1	CPU test Source	Pass	8523
2	Memory test Source	Pass	26568
3	HDD test Source	Pass	610

Test Environment

Intel T2300 1.66 GHZ

APACER DDRII 533 1G(K4T51083QB-ZKD5)

Kingston KVR667D2N5/1G (ELPIDA E5108AE-6E-E)

Western Digital WD3000JS-22PDB0 300GB(SATA)

Windows XP

Item	WEIGHTED SUITE	Result	Remark
1	CPU test Source	Pass	5782
2	Memory test Source	Pass	13425
3	HDD test Source	Pass	1486

5.8 PCMARK 2004

Test Environment
Intel T1400/1.83 GHZ APACER DDRII 533 1G(K4T51083QB-ZKD5) Seagate ST380011A-314 80G

Windows XP

Item	WEIGHTED SUITE	Result	Remark
1	System test Source	Pass	N/A
2	CPU test Source	Pass	N/A
3	Memory test Source	Pass	3478
4	Graphic test Source	Pass	711
5	HDD test Source	Pass	N/A

Test Environment
Intel T7400/2.16 GHZ Rdata DDRII 667 1GB (Rdata AD29608A8A -3EG) TwinMOS DDRII 512MB (SAMSUNC K4T510830B) Seagate ST380011A-314 80G

Windows XP

Item	WEIGHTED SUITE	Result	Remark
1	System test Source	Pass	6134
2	CPU test Source	Pass	N/A
3	Memory test Source	Pass	6629
4	Graphic test Source	Pass	722
5	HDD test Source	Pass	3002

Test Environment
<p>Intel T7400/2.16 GHZ</p> <p>Rdata DDRII 667 1GB (Rdata AD29608A8A -3EG)</p> <p>Seagate ST380011A-314 80G</p>

Windows XP

Item	WEIGHTED SUITE	Result	Remark
1	System test Score	Pass	N/A
2	CPU test Score	Pass	N/A
3	Memory test Score	Pass	6801
4	Graphic test Score	Pass	747
5	HDD test Score	Pass	3036

Test Environment
<p>Intel T1400/1.83 GHZ</p> <p>Rdata DDRII 667 1GB (Rdata AD29608A8A -3EG)</p> <p>Seagate ST380011A-314 80G</p>

Windows XP

Item	WEIGHTED SUITE	Result	Remark
1	System test Source	Pass	N/A
2	CPU test Source	Pass	N/A
3	Memory test Source	Pass	3658
4	Graphic test Source	Pass	745
5	HDD test Source	Pass	3067

Test Environment

Intel T7400 2.16 GHZ

TWINMS DDRII 667 512MB (SAMSUN0 K4T51083QB-GCD5)

Rdata DDRII 667 1GB (Rdata AD29608A8A -3EG)

Western Digital WD3000JS-22PDB0 300GB(SATA)

Windows XP

Item	WEIGHTED SUITE	Result	Remark
1	System test Source	Pass	6284
2	CPU test Source	Pass	N/A
3	Memory test Source	Pass	6743
4	Graphic test Source	Pass	768
5	HDD test Source	Pass	4813

5.9 PCMARK 2005

Test Environment
Intel T1400/1.83 GHZ APACER DDRII 533 1G(K4T51083QB-ZKD5) Seagate ST380011A-314 80G

Windows XP

Item	WEIGHTED SUITE	Result	Remark
1	System test Source	Pass	N/A
2	CPU test Source	Pass	3036
3	Memory test Source	Pass	2811
4	Graphic test Source	Pass	N/A
5	HDD test Source	Pass	2947

Test Environment
Intel T1400/1.83 GHZ Rdata DDRII 667 1GB (Rdata AD29608A8A -3EG) Seagate ST380011A-314 80G

Windows XP

Item	WEIGHTED SUITE	Result	Remark
1	System test Source	Pass	N/A
2	CPU test Source	Pass	3025
3	Memory test Source	Pass	2893
4	Graphic test Source	Pass	823
5	HDD test Source	Pass	2918

Test Environment

Intel T7400/2.16 GHZ
Rdata DDRII 667 1GB (Rdata AD29608A8A -3EG)
Seagate ST380011A-314 80G

Windows XP

Item	WEIGHTED SUITE	Result	Remark
1	System test Source	Pass	N/A
2	CPU test Source	Pass	5527
3	Memory test Source	Pass	4197
4	Graphic test Source	Pass	893
5	HDD test Source	Pass	2869

Test Environment

Intel T7400 2.16 GHZ
TWINMS DDRII 667 512MB (SAMSUN0 K4T51083QB-GCD5)
Rdata DDRII 667 1GB (Rdata AD29608A8A -3EG)
Western Digital WD3000JS-22PDB0 300GB(SATA)

Windows XP

Item	WEIGHTED SUITE	Result	Remark
1	System test Source	Pass	3540
2	CPU test Source	Pass	5523
3	Memory test Source	Pass	4097
4	Graphic test Source	Pass	912
5	HDD test Source	Pass	5077

Test Environment

Intel T2300 1.66 GHZ

Kingston KVR667D2N5/1G (ELPIDA E5108AE-6E-E)

Western Digital WD3000JS-22PDB0 300GB(SATA)

Windows XP

Item	WEIGHTED SUITE	Result	Remark
1	System test Source	Pass	2588
2	CPU test Source	Pass	3900
3	Memory test Source	Pass	2765
4	Graphic test Source	Pass	651
5	HDD test Source	Pass	5078