

# Report



Product Name	LP-171
Product Version	B
Issued Date	20.September.2010
Report Edition	1.0
BIOS Version	1.0
Testing Engineer	Jamin
Check Engineer	Jeff

# Index

Index .....	2
1. Function test .....	4
1.1 Hardware function .....	4
1.2 BIOS function .....	5
1.3 Driver .....	6
2. Compatibility test .....	7
2.1 CPU Test .....	7
2.2 Memory Test.....	8
2.3 VGA Graphic Quality Test .....	9
2.4 Audio .....	10
2.5 CF CARD Test.....	12
2.6 CD-ROM Test .....	13
2.7 USB Test .....	13
2.9 Serial Port Test.....	16
2.10 PS2 Keyboard 、 Mouse Test .....	18
2.11 LAN Test .....	20
2.12 Power Supply Test.....	22
2.13 Os Install .....	22
3. Environmental test.....	23
3.1 Temperature Test.....	23
3.2 Temperature Test.....	25
3.2 Thermal measurements at various points on the board.....	25
4. Reliability Test.....	30
Power Consumption Test .....	30

5. Performance Test .....	33
5.1 Business Win Stone 2002 .....	33
5.2 Business Win Stone 2004 .....	34
5.3 Content Creation Winstone 2001 .....	35
5.4 Content Creation Winstone 2004 .....	36
5.5 3D MARK(2001 、 2003 、 2005).....	37
5.5 3D MARK2006 .....	39
5.6 PC MARK2002.....	40
5.7 PC MARK2004.....	42
5.8 PC MARK2005.....	45
5.9 Storage Performance .....	48

# 1. Function test

## 1.1 Hardware function

### Base Function Test

Item	Description	Result
1	Power Button	Pass
2	Reset	Pass
3	JFRNT	Pass
4	Power LED	Pass
5	HDD LED	Pass
6	FAN	Pass
7	PS2	Pass
8	LAN	Pass
9	DDRII	Pass
10	LVDS	Pass
11	INV	Pass
12	CF	Pass
13	DC_OUT	Pass
14	Audio	Pass
15	USB	Pass
16	COM	Pass
17	DC_IN	Pass
18	LPC	Pass
19	MINI_CRAD	Pass

## Jumper

Item	Description	Result
1	JAT	Pass
2	JVLCD	Pass

## 1.2 BIOS function

Item	Description	Result	Remark
1	Press 'Del' to run Setup Utility	Pass	Pass
2	Ctrl-Alt-Del – Soft-Reboot	Pass	Pass
3	Save & Exit Setup	Pass	Pass
4	Date & Time Setting	Pass	Pass
5	Halt On	Pass	Pass
6	Quick Power On Self Test	Pass	Pass
7	Boot Device Setting	Pass	Pass
8	Boot Up Num Lock Status	Pass	Pass
9	VGA Setting	Pass	Pass
10	Intel HD Audio Controller	Pass	Pass
11	PCI Express Device	Pass	Pass
12	Onboard Serial Port	Pass	Pass
13	USB Device Setting	Pass	Pass
14	Soft-Off by PWRBTN	Pass	Pass
15	Shutdown Temperature	Pass	Pass
16	Watch Dog Timer	Pass	Pass
17	Set Supervisor Password	Pass	Pass
18	Set User Password	Pass	Pass

### 1.3 Driver

CD dition : IPCi2-1.4

#### 1. Windows XP SP2 Driver Test

Item	Description	Result	version
1	Chipset Driver	PASS	8.8.0.1011
2.a	VGA Driver (375QT 375QD)	PASS	6.14.11.1012
2.b	VGA Driver (375QX)	PASS	10.1.0.1418
3	Audio Driver	PASS	5.11.0.5464
4	LAN Driver	PASS	10.3.49.0

#### 2. Windows Server 2003 Driver Test

Item	Description	Result	version
1	Chipset Driver	PASS	15.0.0.0
2	VGA Driver		
3	Audio Driver	PASS	5.10.0.5464
4	LAN Driver	PASS	10.3.49.0

P.S NO SD

#### 3. Windows Vista 32 bit Driver Test

Item	Description	Result	version
1	Chipset Driver	PASS	8.8.0.1011
2	VGA Driver	PASS	7.14.10.1093
3	Audio Driver	PASS	6.0.1.5473
4	LAN Driver	PASS	11.4.7.0

#### 4. Windows7 32 bit Driver Test

Item	Description	Result	version
1	Chipset Driver		
2	VGA Driver	PASS	8.14.10.2026
3	Audio Driver	PASS	2.11.15.0
4	LAN Driver	PASS	11.0.103.0

#### 5. Windows2008 32 bit Driver Test

Item	Description	Result	Version
1	Chipset Driver	PASS	8.8.0.1011
2	VGA Driver	PASS	
3	Audio Driver	PASS	6.0.1.6083
4	LAN Driver	PASS	10.3.49.0

## 2. Compatibility test

### 2.1 CPU Test

Test environment:

OS Windows XP professional SP2

Test program : PC MARK 2005

Spec	CPU Speed	Family	Processor	FSB	L2 Size	Result
<a href="#">SLG</a> <a href="#">PQ</a>	1.10 GHz	Atom	Z510P	400 MHz	512 KB	PASS

## 2.2 Memory Test

Test environment:

OS Windows XP professional SP2

Test program : PC MARK 2005

Manufacturer	Chip	DDRII frequency	Capacity Mbytes	Memory test Source
ADATA	AD29608A 8A-3EC	DDR2 667	512MB	PASS
Kingston	D6408TR4 CGL3U	DDR2 533	1G	PASS
PQI	HY5PS1G 831C	DDR2 800	2G	PASS
Transcend	E1108ACB G-6E-E	DDR2 667	2G	PASS



## 2.3 VGA Graphic Quality Test

Test environment:

OS Windows XP professional SP2

Driver version : 6.14.11.1012

Resolution	Color	Result	Remark
640*480	16 /32bit	PASS	
800*600	16 /32bit	PASS	
1024*768	16 /32bit	PASS	
1280*720	16 /32bit	PASS	
1280*960	16 /32bit	PASS	
1280*1024	16 /32bit	PASS	
1920*1080	16 /32bit	PASS	

## 2.4 Audio

Test envirement:

OS Windows SERVER 2003

Driver version : 5.10.0.5464

Item	Description	Result	Remark
1	2 CH	PASS	
2	Microphone	PASS	

OS Windows XP professional SP2

Driver version : 5.10.0.5464

Item	Description	Result	Remark
1	2 CH	PASS	
2	Microphone	PASS	

OS Windows Vista 32 bit

Driver version : 6.0.1.5473

Item	Description	Result	Remark
1	2 CH	PASS	
2	Microphone	PASS	

OS Windows7 32bit

Driver version : 6.0.1.5983

Item	Description	Result	Remark
1	2 CH	PASS	
2	Microphone	PASS	

OS Windows2008 32bit

Driver version : 6.0.1.5473

Item	Description	Result	Remark
1	2 CH	PASS	
2	Microphone	PASS	

## 2.5 CF CARD Test

CF MODEL	INTERFACE	capacity	CF Size Detect	CF Data Transfer
PQI Compact Flash Card	CF	4 GB	PASS	PASS
PQI Compact Flash Card	CF	4 GB	PASS	PASS
PQI Compact Flash Card	CF	8 GB	PASS	PASS
PQI Compact Flash Card	CF	16 GB	PASS	PASS
INNO DISK ICF 4000 (DC1M-16G D31C2D-D)	CF	16GB	PASS	PASS
INNO DISK Industrial WIDE-TEMP (DC1M-04G D31W1D)	CF	4GB	PASS	PASS

## 2.6 CD-ROM Test

Test environment:

OS Windows XP professional SP2

CD-ROM MODEL	INTERFACE	CD-ROM Detect	CD-ROM Data Transfer	PLAY DVD
LITEON DVD SOSC-2485KX	USB	PASS	PASS	PASS
LITEON DVD SOSW-833SX	USB	PASS	PASS	PASS

## 2.7 USB Test

### 1. Windows XP SP2

Item	Result	Remark
External USB Keyboard Test	PASS	
External USB Mouse Test	PASS	
Hot plugging test	PASS	
USB Mass storage	PASS	

## 2. Windows Server 2003

Item	Result	Remark
External USB Keyboard Test	PASS	
External USB Mouse Test	PASS	
Hot plugging test	PASS	
USB CD ROM	PASS	
USB Mass storage	PASS	

## 4. Windows Vista 32 bit

Item	Result	Remark
External USB Keyboard Test	PASS	
External USB Mouse Test	PASS	
Hot plugging test	PASS	
USB CD ROM	PASS	
USB Mass storage	PASS	

## 5. Windows7 32bit

Item	Result	Remark
External USB Keyboard Test	PASS	
External USB Mouse Test	PASS	
Hot plugging test	PASS	
USB CD ROM	PASS	
USB Mass storage	PASS	

## 6. Windows2008 32bit

Item	Result	Remark
External USB Keyboard Test	PASS	
External USB Mouse Test	PASS	
Hot plugging test	PASS	
USB CD ROM	PASS	
USB Mass storage	PASS	

## 2.9 Serial Port Test

### 1. MS-DOS

Item	Description	Result	Remark
1	RS-232 Mouse Test	PASS	
2	TS	PASS	

### 2. Windows Server 2003

Item	Description	Result	Remark
1	Device Manager Check	PASS	
2	RS-232 Mouse Test	PASS	
3	b&b com port test	PASS	

### 3. Windows XP SP2

Item	Description	Result	Remark
1	Device Manager Check	PASS	
2	RS-232 Mouse Test	PASS	
3	b&b com port test	PASS	



#### 4. . Windows Vista 32 bit

Item	Description	Result	Remark
1	Device Manager Check	PASS	
2	RS-232 Mouse Test	PASS	

#### 5. Windows 7 32 bit

Item	Description	Result	Remark
1	Device Manager Check	PASS	
2	RS-232 Mouse Test	PASS	

#### 6. Windows2008 32 bit

Item	Description	Result	Remark
1	Device Manager Check	PASS	
2	RS-232 Mouse Test	PASS	
3	b&b com port test	PASS	

## 2.10 PS2 Keyboard 、 Mouse Test

### 1. MS-DOS

Item	Description	Result	Remark
1	Keyboard LED Status Test	PASS	
2	Keyboard Typing Test	PASS	
3	Mouse Detect Test	PASS	

### 2. Windows XP SP2

Item	Description	Result	Remark
1	Device Manager Check	PASS	
2	Keyboard Typing Test	PASS	
3	Mouse Detect Test	PASS	

### 3. Windows Vista 32 bit

Item	Description	Result	Remark
1	Device Manager Check	PASS	
2	Keyboard Typing Test	PASS	
3	Mouse Detect Test	PASS	

### 4. Windows Server 2003

Item	Description	Result	Remark
1	Device Manager Check	PASS	
2	Keyboard Typing Test	PASS	
3	Mouse Detect Test	PASS	

## 5. Windows7 32bit

Item	Description	Result	Remark
1	Device Manager Check	PASS	
2	Keyboard Typing Test	PASS	
3	Mouse Detect Test	PASS	

## 6. Windows2008 32bit

Item	Description	Result	Remark
1	Device Manager Check	PASS	
2	Keyboard Typing Test	PASS	
3	Mouse Detect Test	PASS	

## 2.11 LAN Test

Data Transfer Test envirement:

-CAT 6 UTP 100M

-8 HR. continuous

1. Windows XP SP2

Item	Description	Result	Remark
1	Device Manager Check	PASS	
2	Data Transfer Test	PASS	

## 2. Windows Server 2003

Item	Description	Result	Remark
1	Device Manager Check	PASS	
2	Data Transfer Test	PASS	

## 3. Windows Vista 32bit

Item	Description	Result	Remark
1	Device Manager Check	PASS	
2	Data Transfer Test	PASS	

## 4. Windows7 32bit

Item	Description	Result	Remark
1	Device Manager Check	PASS	
2	Data Transfer Test	PASS	

## 5. Windows2008 32bit

Item	Description	Result	Remark
1	Device Manager Check	PASS	
2	Data Transfer Test	PASS	

## 2.12 Power Supply Test

Item	TYPE	Description	Result	Remark
1	ADAPTER	LS 0219B1280(80W)	PASS	

## 2.13 Os Install

Item	Description	Result	Remark
1	Windows Vista 32 bit	PASS	
2	Windows XP SP2	PASS	
3	Windows Server 2003	PASS	
4	Windows7 32bit	PASS	
5	Windows2008 32bit	PASS	
6	Ubuntu 9.10	PASS	
7	Fedora12	PASS	

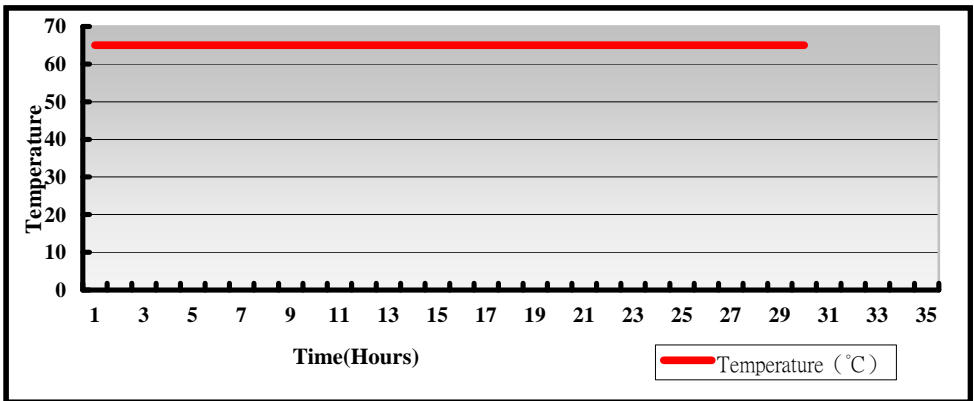
### 3. Environmental test

#### 3.1 Temperature Test

Hardware Device list:

System Board	LP-171QT
CPU	Intel Atom Z510P 1.10GHZ
Memory	PQI DDR2-800S 1GB( HY5PS1G831C)
HDD	INNO DISK Industrial WIDE-TEMP 4G (DC1M-04GD31W1D)
Operating OS	Windows XP
Test Equipment	THERMOTRON 2800 Programmer/Controller
Test Program	3DMark 2003

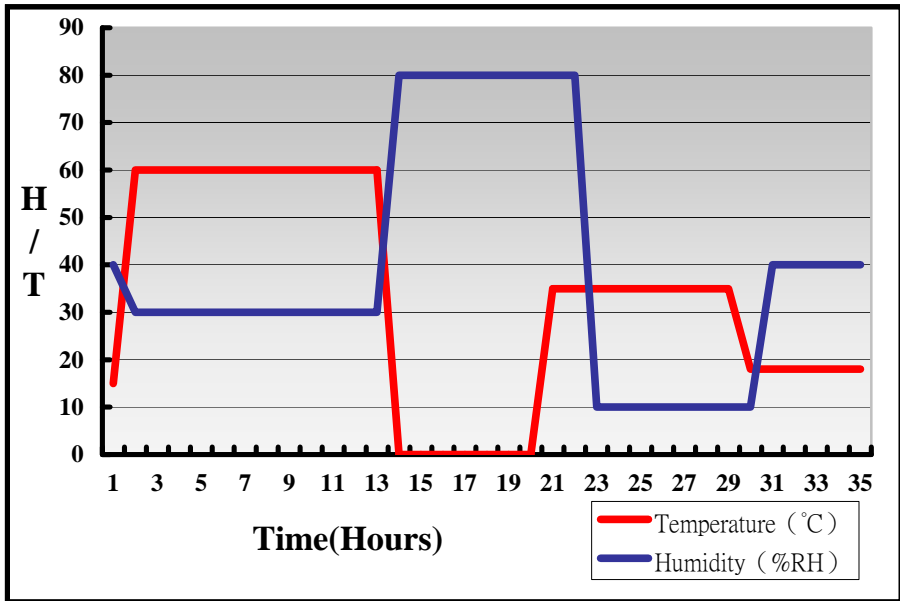
Test Result:



Hardware Device list:

System Board	LP-171QT
CPU	Intel Atom Z510P 1.10GHZ
Memory	PQI DDR2-800S 1GB( HY5PS1G831C)
HDD	INNO DISK Industrial WIDE-TEMP 4G (DC1M-04GD31W1D)
Operating OS	Windows XP
Test Equipment	THERMOTRON 2800 Programmer/Controller
Test Program	3DMark 2003

Test Result:





Boot Up Test:

Hardware Device list:

System Board	LP-171QT
CPU	Intel Atom Z510P 1.10GHZ
Memory	PQI DDR2-800S 1GB( HY5PS1G831C)
HDD	INNO DISK Industrial WIDE-TEMP 4G (DC1M-04GD31W1D)

Temperature	Result	Remark
0°C	PASS	50 Times
65°C	PASS	50 Times

### 3.2 Temperature Test

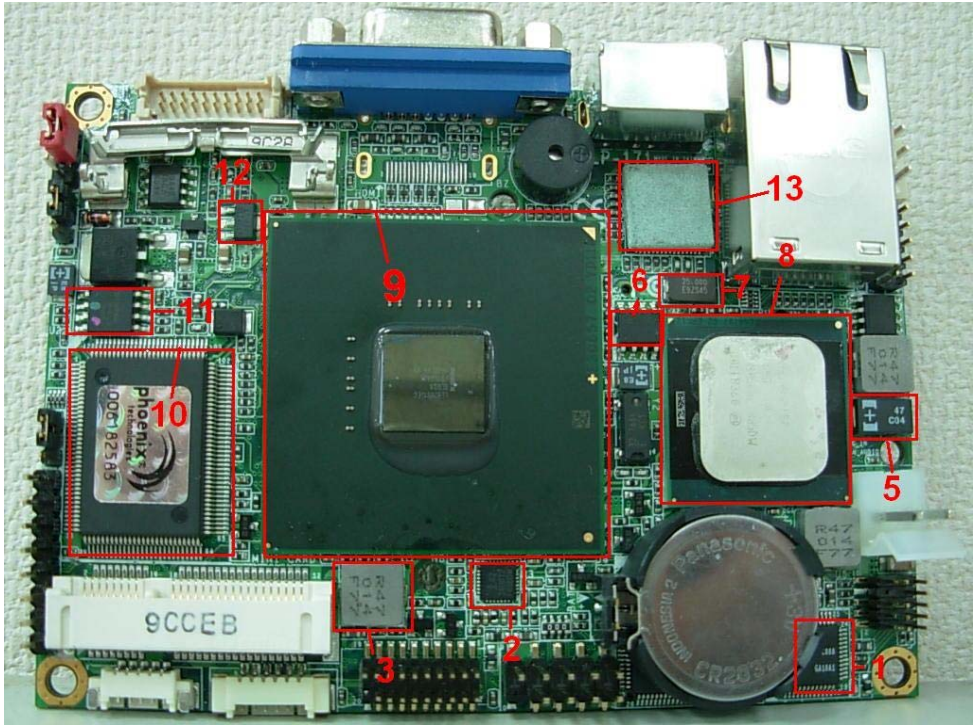
3.2 Thermal measurements at various points on the board

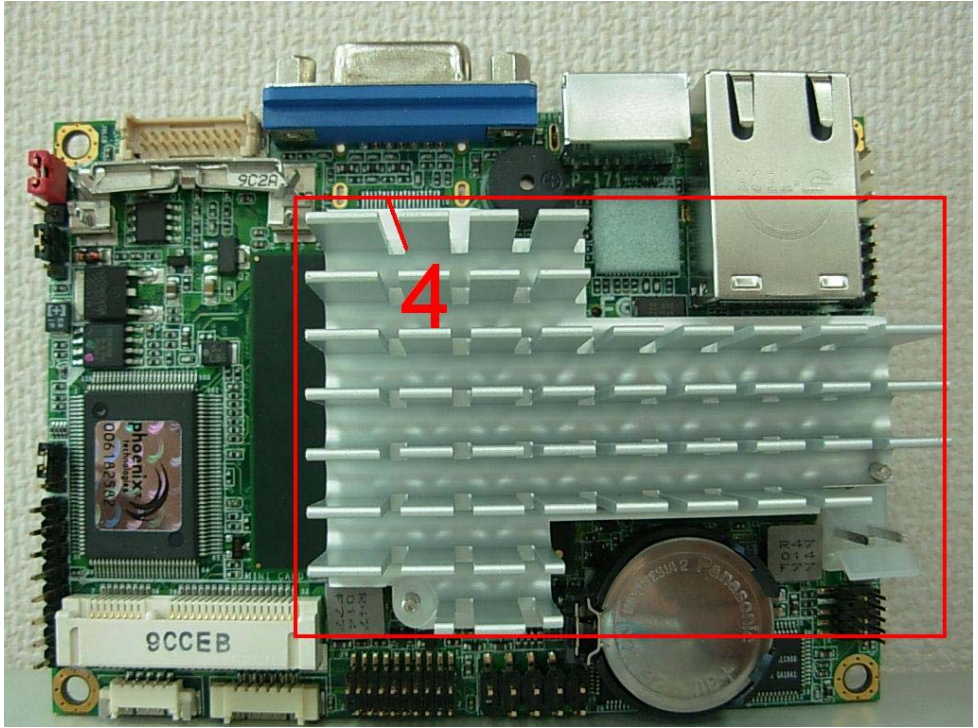
Test Environment :

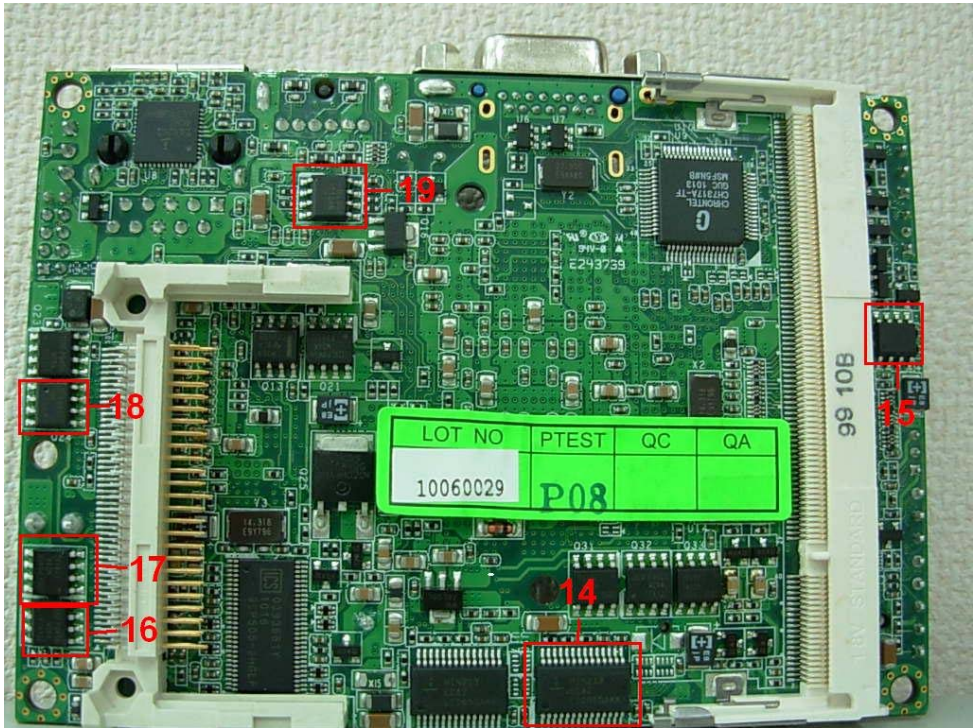
Motherboard	LP-171QT
CPU	Intel® Atom™ Z510P processor 1.1GHz
Memory	PQI DDR2-800S 1GB( HY5PS1G831C)
CF	Wide Temp PQI 4GB
Power	LS 0219B1280 (80W)
Operating System	Windows XP
Test Program	Burnin 5.3

Test Result:

Item	Environmental temperature	29.1°C
1	U5(ICALC888)	66.5°C
2	U3(ISL6228)	57.3°C
3	LC2(LLC0.47UH/063T)	57.3°C
4	Heat Sink	55.8°C
5	C42(CSANYO16T47M)	55.1°C
6	Q6(TMSIRF7413Z)	59.9°C
7	X1(OCR25S-FA)	56.4°C
8	CPU(ICPZ510P)	73°C
9	ICHUS15WP(Northbridge)	59°C
10	LPCIO	57.7°C
11	U2(ICH25VF080B)	58.8°C
12	Q2(TREL1087C)	65.2°C
13	U1(ICH82574L)	56.1°C
14	U17(ICADM213ECA-T)	51.7°C
15	U12(ICRT9173PS)	56.3°C
16	Q35(TMSIRF7413Z)	57.3°C
17	Q29(TMSIRF7413Z)	57.8°C
18	Q24(ICSI4435_NL)	55.4°C
19	U11(ICAT25010NL)	55.3°C







## 4. Reliability Test

### Power Consumption Test

#### 1. Test Environment:

Motherboard	LP-171QT
CPU	Intel® Atom™ Z510P processor 1.1GHz
Memory	PQI DDR2-800S 1GB( HY5PS1G831C)
CF	Wide Temp PQI 4GB

(A) Power Supply: LS 0219B1280(80W)

Voltage	MS-DOS Boot up		Windows XP SP2 Prime95-255a + 3DMarks2003	
	Current ( A )	Power ( W )	Current ( A )	Power ( W )
12V	0.59	7.08	0.89	10.68

#### 1.a. Test Environment:

The same as above but with LCD panel

Display Panel	AUO G084SN03V0 8.4" LCD
---------------	-------------------------

(A) Power Supply: LS 0219B1280(80W)

Voltage	MS-DOS Boot up		Windows XP SP2 Prime95-255a + 3DMarks2003	
	Current ( A )	Power ( W )	Current ( A )	Power ( W )
12V	1.19	14.28	1.4	16.8

## 2. Test Environment:

Motherboard	LP-171QT
CPU	Intel® Atom™ Z510P processor 1.1GHz
Memory	PQI DDR2-800S 2GB(HY5PS1G831C))
CF	Wide Temp PQI 4GB

(A) Power Supply: LS 0219B1280(80W)

Voltage	MS-DOS Boot up		Windows XP SP2 Prime95-255a + 3DMarks2003	
	Current ( A )	Power ( W )	Current ( A )	Power ( W )
12V	0.59	7.08	0.92	11.04

### 2.a. Test Environment:

The same as above but with LCD panel

Display Panel	AUO G084SN03V0 8.4" LCD
---------------	-------------------------

(A) Power Supply: LS 0219B1280(80W)

Voltage	MS-DOS Boot up		Windows XP SP2 Prime95-255a + 3DMarks2003	
	Current ( A )	Power ( W )	Current ( A )	Power ( W )
12V	1.11	13.32	1.37	16.44

### 3. Test Environment:

Motherboard	LP-171QT
CPU	Intel® Atom™ Z510P processor 1.1GHz
Memory	Kingston DDR2-800 1G(E1108AFSE-8E-F)
CF	Wide Temp PQI 4GB

(A) Power Supply: LS 0219B1280(80W)

Voltage	MS-DOS Boot up		Windows XP SP2 Prime95-255a + 3DMarks2003	
	Current ( A )	Power ( W )	Current ( A )	Power ( W )
12V	0.61	7.32	0.88	10.56

### 3.a. Test Environment:

The same as above but with LCD panel

Display Panel	AUO G084SN03V0 8.4" LCD
---------------	-------------------------

(A) Power Supply: LS 0219B1280(80W)

Voltage	MS-DOS Boot up		Windows XP SP2 Prime95-255a + 3DMarks2003	
	Current ( A )	Power ( W )	Current ( A )	Power ( W )
12V	0.98	11.76	1.31	15.72



## 5. Performance Test

### 5.1 Business Win Stone 2002

Motherboard : LP-171QX

Windows XP SP2

WEIGHTED SUITE	Test Environment	Result	Remark
Business Win stone2002	Intel® Atom Z510P processor ADATA DDR2 667 512MB (AD29608A8A-3EC) PQI Compact Flash Card 8G	Pass	10.1 10.6 10.4 10.5
Business Win stone2002	Intel® Atom Z510P processor Kingston DDR2 533 1G (D6408TR4CGL3U) PQI Compact Flash Card 8G	Pass	11.3 11.1 11.3 10.6
Business Win stone2002	Intel® Atom Z510P processor PQI DDR2 822S 2G (HY5PS1G831C) PQI Compact Flash Card 8G	Pass	11.4 11.5 11.3 11.2

## 5.2 Business Win Stone 2004

Motherboard : LP-171QX

Windows XP SP2

WEIGHTED SUITE	Test Environment	Result	Remark
Business Win stone2004	Intel® Atom Z510P processor ADATA DDR2 667 512MB (AD29608A8A-3EC) PQI Compact Flash Card 8G	Pass	10.1 10.6 10.4 10.5
Business Win stone2004	Intel® Atom Z510P processor Kingston DDR2 533 1G (D6408TR4CGL3U) PQI Compact Flash Card 8G	Pass	11.3 11.1 11.3 10.6
Business Win stone2004	Intel® Atom Z510P processor PQI DDR2 822S 2G (HY5PS1G831C) PQI Compact Flash Card 8G	Pass	11.4 11.5 11.3 11.2

### 5.3 Content Creation Winstone 2001

Motherboard : LP-171QX

Windows XP SP2

WEIGHTED SUITE	Test Environment	Result	Remark
Content Creation Winstone 2001	Intel® Atom Z510P processor Transcend DDR2 667 2G (E1108ACBG-5E-E) PQI Compact Flash Card 8G	Pass	26.8 26.4 25.8 25.8 26.1
Content Creation Winstone 2001	Intel® Atom Z510P processor Kingston DDR2 533 1G (D6408TEBGWL37) PQI Compact Flash Card 8G	Pass	26.3 25.9 26 26.4 21.5
Content Creation Winstone 2001	Intel® Atom Z510P processor PQI DDR2 800 2G (HY5PS1G831C) PQI Compact Flash Card 8G	Pass	26.8 26 25.9 25.9 25.6

## 5.4 Content Creation Winstone 2004

Motherboard : LP-171QX

Windows XP SP2

WEIGHTED SUITE	Test Environment	Result	Remark
Content Creation Winstone 2004	Intel® Atom Z510P processor Kingston DDR2 800 1G (TGK427A3G-A) PQI Compact Flash Card 8G	Pass	9.4 9.5 9.5 9.5
Content Creation Winstone 2004	Intel® Atom Z510P processor Transcend DDR2 667 2G (E1108ACBG-5E-E) PQI Compact Flash Card 8G	Pass	8.3 8.2 8.2 8.3
Content Creation Winstone 2004	Intel® Atom Z510P processor Kingston DDR2 533 1G (D6408TEBGWL37) PQI Compact Flash Card 8G	Pass	9.5 9.5 9.5 9.5

## 5.5 3D MARK(2001、2003、2005)

Motherboard : LP-171QT

Windows XP SP2

WEIGHTED SUITE	Test Environment	Result	Remark
3DMARK2001 Scores	Intel® Atom Z510P processor ADATA DDR2 667 512MB (AD29608A8A-3EC) PQI Compact Flash Card 8G	Pass	942
3DMARK2003 Scores		Pass	514
3DMARK2005 Scores		Pass	96

Windows XP SP2

WEIGHTED SUITE	Test Environment	Result	Remark
3DMARK2001 Scores	Intel® Atom Z510P processor Kingston DDR2 533 1G (D6408TR4CGL3U) PQI Compact Flash Card 8G	Pass	1589
3DMARK2003 Scores		Pass	524
3DMARK2005 Scores		Pass	121

## Windows XP SP2

WEIGHTED SUITE	Test Environment	Result	Remark
3DMARK2001 Scores	Intel® Atom Z510P processor PQI DDR2 800 2G (HY5PS1G831C) PQI Compact Flash Card 8G	Pass	1594
3DMARK2003 Scores		Pass	528
3DMARK2005 Scores		Pass	120

## 5.5 3D MARK2006

Windows XP SP2

Item	WEIGHTED SUITE	Test Environment	Result	Remark
1	3DMARK Source	Intel® Atom Z510P processor Kingston DDR2 800 1G (TGK427A3G-A) PQI Compact Flash Card 8G	Pass	102
2	SM2.0 Source		Pass	47
3	HDR/SM3.0 Source		Pass	N/A
4	CPU Source		Pass	331

Item	WEIGHTED SUITE	Test Environment	Result	Remark
1	3DMARK Source	Intel® Atom Z510P processor PQI DDR2 800 1G (HY5PS1G831C) PQI Compact Flash Card 8G	Pass	85
2	SM2.0 Source		Pass	39
3	HDR/SM3.0 Source		Pass	N/A
4	CPU Source		Pass	330

## Windows XP SP2

Item	WEIGHTED SUITE	Test Environment	Result	Remark
1	3DMARK Source	Intel® Atom Z510P processor Kingston DDR2 533 1G (D6408TEBGW37) PQI Compact Flash Card 8G	Pass	86
2	SM2.0 Source		Pass	40
3	HDR/SM3.0 Source		Pass	N/A
4	CPU Source		Pass	330

## 5.6 PC MARK2002

Test Environment
Intel® Atom Z510P processor ADATA DDR2 667 512MB (AD29608A8A-3EC) PQI Compact Flash Card 8G

## Windows XP SP2

Item	WEIGHTED SUITE	Result	Remark
1	CPU test Source	Pass	1786
2	Memory test Source	Pass	4252
3	HDD test Source	Pass	141



Test Environment
Intel® Atom Z510P processor Kingston DDR2 533 1G (D6408TR4CGL3U) PQI Compact Flash Card

Windows XP SP2

Item	WEIGHTED SUITE	Result	Remark
1	CPU test Source	Pass	1785
2	Memory test Source	Pass	4320
3	HDD test Source	Pass	137

Test Environment
Intel® Atom Z510P processor PQI DDR2 822S 2G (HY5PS1G831C) PQI Compact Flash Card 8G

Windows XP SP2

Item	WEIGHTED SUITE	Result	Remark
1	CPU test Source	Pass	1784
2	Memory test Source	Pass	4150
3	HDD test Source	Pass	136

Test Environment
Intel® Atom Z510P processor Transcend DDR2 667 2G (E1108ACBG-6E-E) PQI Compact Flash Card 8G

Windows XP SP2

Item	WEIGHTED SUITE	Result	Remark
1	CPU test Source	Pass	1784
2	Memory test Source	Pass	4268
3	HDD test Source	Pass	134

#### 5.7 PC MARK2004

Test Environment
Intel® Atom Z510P processor ADATA DDR2 667 512MB (AD29608A8A-3EC) PQI Compact Flash Card 8G

Windows XP PS2

Item	WEIGHTED SUITE	Result	Remark
1	PCMark Source	Pass	N/A
2	CPU test Source	Pass	N/A
3	Memory test Source	Pass	2109
4	Graphic test Source	Pass	404
5	HDD test Source	Pass	N/A

Test Environment
Intel® Atom Z510P processor Kingston DDR2 533 1G (D6408TR4CGL3U) PQI Compact Flash Card 8G

Windows XP PS2

Item	WEIGHTED SUITE	Result	Remark
1	PCMark Source	Pass	N/A
2	CPU test Source	Pass	N/A
3	Memory test Source	Pass	2129
4	Graphic test Source	Pass	407
5	HDD test Source	Pass	N/A

Test Environment
Intel® Atom Z510P processor PQI DDR2 800 2G (HY5PS1G831C) PQI Compact Flash Card 8G

## Windows XP PS2

Item	WEIGHTED SUITE	Result	Remark
1	PCMark Source	Pass	N/A
2	CPU test Source	Pass	N/A
3	Memory test Source	Pass	2087
4	Graphic test Source	Pass	407
5	HDD test Source	Pass	N/A

Test Environment
Intel® Atom Z510P processor Transcend DDR2 667 2G (E1108ACBG-6E-E) PQI Compact Flash Card 8G

## Windows XP PS2

Item	WEIGHTED SUITE	Result	Remark
1	PCMark Source	Pass	N/A
2	CPU test Source	Pass	N/A
3	Memory test Source	Pass	2154
4	Graphic test Source	Pass	407
5	HDD test Source	Pass	N/A

## 5.8 PC MARK2005

Test Environment
Intel® Atom Z510P processor ADATA DDR2 667 512MB (AD29608A8A-3EC) PQI Compact Flash Card 8G

Windows XP SP2

Item	WEIGHTED SUITE	Result	Remark
1	System test Source	Pass	N/A
2	CPU test Source	Pass	1020
3	Memory test Source	Pass	1707
4	Graphic test Source	Pass	N/A
5	HDD test Source	Pass	N/A

Test Environment
Intel® Atom Z510P processor Kingston DDR2 533 1G (D6408TR4CGL3U) PQI Compact Flash Card 8G

## Windows XP SP2

Item	WEIGHTED SUITE	Result	Remark
1	System test Source	Pass	N/A
2	CPU test Source	Pass	1020
3	Memory test Source	Pass	1710
4	Graphic test Source	Pass	N/A
5	HDD test Source	Pass	784

Test Environment
Intel® Atom Z510P processor PQI DDR2 800 2G (HY5PS1G831C) PQI Compact Flash Card 8G

## Windows XP SP2

Item	WEIGHTED SUITE	Result	Remark
1	System test Source	Pass	N/A
2	CPU test Source	Pass	1020
3	Memory test Source	Pass	N/A
4	Graphic test Source	Pass	N/A
5	HDD test Source	Pass	746

Test Environment
Intel® Atom Z510P processor Transcend DDR2 667 2G (E1108ACBG-6E-E) PQI Compact Flash Card 8G

Windows XP PS2

Item	WEIGHTED SUITE	Result	Remark
1	PCMark Source	Pass	N/A
2	CPU test Source	Pass	1019
3	Memory test Source	Pass	1710
4	Graphic test Source	Pass	N/A
5	HDD test Source	Pass	761

## 5.9 Storage Performance

### 5.9.1 HDD

Test environment:

OS Windows XP professional SP2

Program (HD Tune)

HDD MODEL	INTERF ACE	capacity	Average	Burst Rate	Access time
CF	CF	16GB	20.7 MB/sec	20.6 MB/sec	0.2ms
XDOM	PCIE mini_card	16GB	40.7 MB/sec	39.4 MB/sec	0.4ms
Compact Flash Card	CF	8G	6.4 MB/sec	6.2 MB/sec	0.3 ms
Compact Flash Card	CF	4G	11.3 MB/sec	11.4 MB/sec	0.8 ms
Compact Flash Card	CF	4G	6.4 MB/sec	6.2 MB/sec	0.3 ms



## 5.9.2 CD-ROM

Test environment:

OS Windows XP professional SP2

Program (NERO)

CD-ROM MODEL	INTERFACE	Average speed	Full READ	Burst Rate	DVD
LITEON DVD SOSW-833SX	USB	5.42x	219ms	17 MB/s	16X DVD-R
MATSHITA DVD EBC100	USB	3.97x	279ms	17 MB/s	16X DVD-R