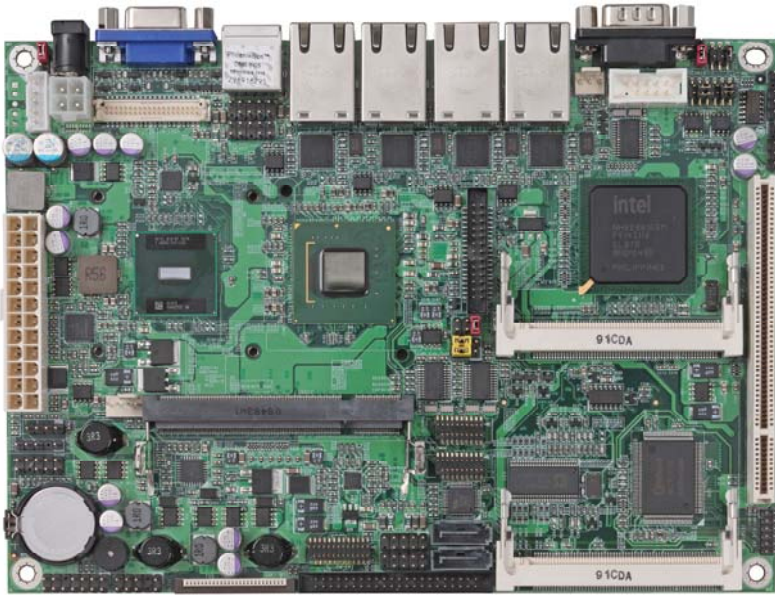


Report



Product Name	LE-575
Product Version	B
Issued Date	30.Setpember.2009
Report Edition	1.0
BIOS Version	1.0
Testing Engineer	JEFF

Index

Index	2
1. Function test	4
1.1 Hardware function	4
1.2 BIOS function	7
1.3 Driver	9
2. Compatibility test	10
2.1 CPU Test	10
2.2 Memory Test	10
2.3 VGA Graphic Quality Test	11
2.4 Audio	12
2.5 HDD Test	14
2.6 CD-ROM Test	16
2.7 USB Test	17
2.8 Serial Port Test	19
2.9 PS2 Keyboard 、 Mouse Test	21
2.10 LAN Test	22
2.11 Power Supply Test	23
2.12 Floppy Drive Test	25
2.13 Os Install	25
2.14 Print Port Test	26
3. Environmental test	27
3.1 Temperature Test	27
3.2 Thermal measurements at various points on the board	30
4. Reliability Test	32
4.1 Power Consumption Test	32
5. Performance Test	38
5.1 Business Win Stone 2002	38

5.2 Business Win Stone 2004	39
5.3 Content Creation Winstone 2001	40
5.3 Content Creation Winstone 2004	41
5.4 3D MARK(2001、2003、2005)	42
5.5 3D MARK2006	44
5.6 PC MARK2002.....	46
5.7 PC MARK2004.....	48
5.8 PC MARK2005.....	50
5.9 PATA Performance	52
5.10 SATA Performance	54
5.11 USB Performance.....	56

1. Function test

1.1 Hardware function

Base Function Test

Item	Description	Result
1	Power Button	Pass
2	Reset	Pass
3	Power LED	Pass
4	HDD LED	Pass
5	SATA1	Pass
6	SATA2	Pass
8	USB1	Pass
9	USB2	Pass
10	USB3	Pass
11	USB4	Pass
12	USB5	Pass
13	USB6	Pass
14	USB7	Pass
15	USB8	Pass
16	DDRII A1	Pass
17	Floppy	Pass
18	LPT	Pass
19	COM1	Pass
20	COM2	Pass
21	COM3	Pass
22	COM4	Pass
23	COM5	Pass

24	COM6	Pass
25	VGA Port	Pass
26	PS2	Pass
27	AUDIO	Pass
28	CD_IN	Pass
29	SPDIF	Pass
30	Mini PCI 1	Pass
31	Mini PCI 2	Pass
32	DIO	Pass
33	CPUFAN	Pass
34	SYSFAN	Pass
35	PCI	Pass
36	IDE	Pass
37	DVI(LE-575XD)	Pass
38	LVDS1	Pass
39	LVDS2(LE-575)	Pass
40	LAN1	Pass
41	LAN2	Pass
42	LAN3	Pass
43	LAN4	Pass
44	IrDA	Pass
45	HDTV	Pass
46	CF	Pass

Jumper

Item	Description	Result
1	JRTC	Pass
2	JCSEL1	Pass
3	JVLCD	Pass
4	JAT	Pass
5	JCSEL1	Pass
6	JCSEL2	Pass
7	JVINV	Pass

1.2 BIOS function

Item	Description	Result	Remark
1	Press 'Del' to run Setup Utility	Pass	
2	Ctrl-Alt-Del – Soft-Reboot	Pass	
3	Save & Exit Setup	Pass	
4	Date & Time Setting	Pass	
5	Drive A	Pass	
6	Quick Power On Self Test	Pass	
7	Boot Device Setting	Pass	
8	Boot Up Floppy Seek	Pass	
9	Boot Up Num Lock Status	Pass	
10	ACPI Suspend Type	Pass	
11	Halt On	Pass	
12	Onboard Serial Port	Pass	
13	USB Controller	Pass	
14	USB Keyboard Support	Pass	
15	Onboard FDC Controller	Pass	
16	Soft-Off by PWRBTN	Pass	
17	Power On Function	Pass	
18	ACPI Function	Pass	
19	Hot Key Password	Pass	
20	Wake-up by PCI card	Pass	
21	Resume by Alarm	Pass	
22	Watch Dog Timer Select	Pass	
23	Init Display First	Pass	
24	Onboard Parallel Port	Pass	

25	PWRON After PWR-Fail+	Pass	
26	Power On by Ring	Pass	
27	Set Supervisor Password	Pass	
28	Set User Password	Pass	
29	UART Mode Select	Pass	
30	RxD , Txd Active	Pass	
31	IR Transmission Delay	Pass	
32	UR2 duplex Mode	Pass	
33	Use IR Pins	Pass	
34	CPU Warning Temperature	Pass	
35	Shutdown Temperature	Pass	
36	Smart CPUFAN Temp	Pass	

1.3 Driver

CD Edition : IPCi 2– 1.4

1. Windows XP SP2 Driver Test

Item	Description	Result	version
1	Chipset Driver	PASS	9.0.0.1008
2	VGA Driver	PASS	6.14.10.4906
3	Audio Driver	PASS	5.10.0.5464
4	LAN Driver	PASS	10.3.49.0

2. Windows Server 2003 Driver Test

Item	Description	Result	version
1	Chipset Driver	Pass	9.0.0.1008
2	Audio Driver	Pass	5.10.0.5464
3	LAN Driver	Pass	10.3.49.0

3. Windows 2000 SP4

Item	Description	Result	version
1	Chipset Driver	PASS	9.0.0.1008
2	VGA Driver	PASS	6.14.10.4906
3	Audio Driver	PASS	5.10.0.5464
4	LAN Driver	PASS	10.3.49.0

4. Windows Vista 32 bit Driver Test

Item	Description	Result	version
1	Chipset Driver	PASS	9.0.0.1008
2	VGA Driver	PASS	7.14.10.1409
3	Audio Driver	PASS	6.0.1.5473
4	LAN Driver	PASS	10.3.49.0

2. Compatibility test

2.1 CPU Test

Test environment:

OS Windows XP professional SP2

Test program : PC MARK 2005

	CPU	Fa	Proc	F	L	R
Speed	1.60	mily	essor	SB	2	e
GHz		Ato	N27	33	5	s
					Siz	Δ
					12	

2.2 Memory Test

Test environment:

OS Windows XP professional SP2

Test program : PC MARK 2005

Manufacturer	Chip	DDRII frequency	Capacity Mbytes	Memory test Source
Transcend	7PEIID9 HNL	DDRII 667	2GB	PASS
Transcend	H5PS1G B3EFA	DDRII 800	2GB	PASS
Kingston	HY5PS1 2B21C	DDRII 533	1GB	PASS
PQI	7QE22D 9HNL	DDRII 667	2GB	PASS

2.3 VGA Graphic Quality Test

Test environment:

OS Windows XP professional SP2

Driver version : 6.14.10.4764

Resolution	Color	Result	Remark
800*600	16 /32bit	PASS	
1024*768	16 /32bit	PASS	
1152*864	16 /32bit	PSAA	
1280*600	16 /32bit	PASS	
1280*720	16 /32bit	PASS	
1280*768	16 /32bit	PASS	
1280*960	16 /32bit	PASS	
1280*1024	16 /32bit	PASS	
1400*1050	16 /32bit	PASS	
1600*900	16 /32bit	PASS	
1600*1200	16 /32bit	PASS	

2.4 Audio

Test envirement:

OS Windows XP professional SP2

Driver version : 5.10.0.5464

Item	Description	Result	Remark
1	2 CH	PASS	
2	Microphone	PASS	
3	SPDIF OUT	PASS	
4	CDIN	PASS	

OS Windows SERVER 2003

Driver version : 5.10.0.5464

Item	Description	Result	Remark
1	2 CH	PASS	
5	Microphone	PASS	
7	SPDIF OUT	PASS	
8	CDIN	PASS	

OS Windows 2000 SP4

Driver version : 5.10.0.5464

Item	Description	Result	Remark
1	2 CH	PASS	
5	Microphone	PASS	
7	SPDIF OUT	PASS	
8	CDIN	PASS	

OS Windows Vista 32 bit

Driver version : 6.0.1.5473

Item	Description	Result	Remark
1	2 CH	PASS	
5	Microphone	PASS	
7	SPDIF OUT	PASS	
8	CDIN	PASS	

2.5 HDD Test

Test envirement:

OS Windows XP professional SP2

HDD MODEL	INTERFACE	capacity	HDD Size Detect	HDD Data Transfer	HDD LED Check
Western Digital WD2500J B-00REA0	PATA	250GB	PASS	PASS	PASS
Seagate ST320413 A	PATA	20B	PASS	PASS	PASS
Seagate ST330631 A	PATA	30B	PASS	PASS	PASS
QUANTUM FIREBALL _TMI	PATA	1GB	PASS	PASS	PASS
HITACHI HDS7225 40VLA20	PATA	40GB	PASS	PASS	PASS
Seagate ST316081 5AS	SATA	160GB	PASS	PASS	PASS

Western Digital WD800JD -00LSA0	SATA	80GB	PASS	PASS	PASS
Western Digital WD2500k s-00MJB0	SATA	250GB	PASS	PASS	PASS

2.6 CD-ROM Test

Test envirement:

OS Windows XP professional SP2

CD-ROM MODEL	INTERFACE	CD-ROM Detect	CD-ROM Data Transfer	PLAY DVD
ASUS CD-S520/A20K	PATA	PASS	PASS	PASS
SONY CDU7811 PY0A		PASS	PASS	PASS
LITE-ONLTR-401255 ZS0K		PASS	PASS	PASS
ASUS DRW 1814BLT 1.13	SATA	PASS	PASS	PASS
PIONEER DVD-RW DVR-212 1.21		PASS	PASS	PASS

2.7 USB Test

1. Windows XP SP2

Item	Result	Remark
External USB Keyboard Test	PASS	
External USB Mouse Test	PASS	
Hot plugging test	PASS	
CD ROM	PASS	
USB Mass storage	PASS	

2. Windows Server 2003

Item	Result	Remark
External USB Keyboard Test	PASS	
External USB Mouse Test	PASS	
Hot plugging test	PASS	
CD ROM	PASS	
USB Mass storage	PASS	

3. Windows 2000 SP4

Item	Result	Remark
External USB Keyboard Test	PASS	
External USB Mouse Test	PASS	
Hot plugging test	PASS	
CD ROM	PASS	
USB Mass storage	PASS	

4. Windows Vista 32 bit

Item	Result	Remark
External USB Keyboard Test	PASS	
External USB Mouse Test	PASS	
Hot plugging test	PASS	
CD ROM	PASS	
USB Mass storage	PASS	

2.8 Serial Port Test

1. MS-DOS

Item	Description	Result	Remark
1	RS-232 Mouse Test	PASS	
2	RS-422 & RS-485	PASS	
3	PC Check	PASS	
4	TS	PASS	

2. Windows Server 2003

Item	Description	Result	Remark
1	Device Manager Check	PASS	
2	RS-232 Mouse Test	PASS	
3	b&b com port test	PASS	

3. Windows XP SP2

Item	Description	Result	Remark
1	Device Manager Check	PASS	
2	RS-232 Mouse Test	PASS	
3	b&b com port test	PASS	

3. Windows 2000 SP4

Item	Description	Result	Remark
1	Device Manager Check	PASS	
2	RS-232 Mouse Test	PASS	
3	b&b com port test	PASS	

4. Windows Vista 32 bit

Item	Description	Result	Remark
1	Device Manager Check	PASS	
2	RS-232 Mouse Test	PASS	

2.9 PS2 Keyboard 、 Mouse Test

1. MS-DOS

Item	Description	Result	Remark
1	Keyboard LED Status Test	PASS	
2	Keyboard Typing Test	PASS	
3	Mouse Detect Test	PASS	

2. Windows XP SP2

Item	Description	Result	Remark
1	Device Manager Check	PASS	
2	Keyboard Typing Test	PASS	
3	Mouse Detect Test	PASS	

3. Windows Vista 32 bit

Item	Description	Result	Remark
1	Device Manager Check	PASS	
2	Keyboard Typing Test	PASS	
3	Mouse Detect Test	PASS	

4. Windows Server 2003

Item	Description	Result	Remark
1	Device Manager Check	PASS	
2	Keyboard Typing Test	PASS	
3	Mouse Detect Test	PASS	

5. Windows 2000 SP4

Item	Description	Result	Remark
1	Device Manager Check	PASS	
2	Keyboard Typing Test	PASS	
3	Mouse Detect Test	PASS	

2.10 LAN Test

Data Transfer Test envirement:

-CAT 6 UTP 100M

-8 HR. continuous

1. Windows XP SP2

Item	Description	Result	Remark
1	Device Manager Check	PASS	
2	Data Transfer Test	PASS	

2. Windows Server 2003

Item	Description	Result	Remark
1	Device Manager Check	PASS	
2	Data Transfer Test	PASS	

3. Windows 2000 SP4

Item	Description	Result	Remark
1	Device Manager Check	PASS	
2	Data Transfer Test	PASS	

4. Windows Vista 32bit

Item	Description	Result	Remark
1	Device Manager Check	PASS	
2	Data Transfer Test	PASS	

2.11 Power Supply Test

1. MS-DOS

Item	Description	Verification	
		Result	Remark
1	ADAPTER	PASS	LS 0219B1280
2	ATX Power	PASS	CWT SFX-200CPS3C-TL 200W
3	ATX Power	PASS	Seasonic SS-430-HB 430W

2. Windows XP SP2

Item	Description	Verification	
		Result	Remark
1	ADAPTER	PASS	LS 0219B1280
2	ATX Power	PASS	CWT SFX-200CPS3C-TL 200W
3	ATX Power	PASS	Seasonic SS-430-HB 430W

3. Windows Server 2003

Item	Description	Verification	
		Result	Remark
1	ADAPTER	PASS	LS 0219B1280
2	ATX Power	PASS	CWT SFX-200CPS3C-TL 200W
3	ATX Power	PASS	Seasonic SS-430-HB 430W

4. Windows 2000 SP4

Item	Description	Verification	
		Result	Remark
1	ADAPTER	PASS	LS 0219B1280
2	ATX Power	PASS	CWT SFX-200CPS3C-TL 200W
3	ATX Power	PASS	Seasonic SS-430-HB 430W

5. Windows Vista 32bit

Item	Description	Verification	
		Result	Remark
1	ADAPTER	PASS	LS 0219B1280
2	ATX Power	PASS	CWT SFX-200CPS3C-TL 200W
3	ATX Power	PASS	Seasonic SS-430-HB 430W

2.12 Floppy Drive Test

Floppy	Floppy Drive Detect	Floppy Data Transfer
TEAC FD-05HG	PASS	PASS

2.13 Os Install

Item	Description	Result	Remark
2	Windows Vista 32 bit	PASS	
3	Windows XP SP2	PASS	
4	Windows Server 2003	PASS	
5	Windows 2000 SP4	PASS	
6	Suse 10.0	PASS	
7	Ubuntu 9.04	PASS	
8	Red Hat 8.0	PASS	
9	Code OS-5.0	PASS	
10	Fedora 10	PASS	

2.14 Print Port Test

1. MS-DOS

Item	Description	Result	Remark
1	PC Check	PASS	
2	TS	PASS	

2. Window XP SP2

Item	Description	Result	Remark
1	ECP/EPP PRINT TEST	PASS	

3. Window 2003

Item	Description	Result	Remark
1	ECP/EPP PRINT TEST	PASS	

54. Windows 2000 SP4

Item	Description	Result	Remark
1	ECP/EPP PRINT TEST	PASS	

5. Windows Vista 32bit

Item	Description	Result	Remark
1	ECP/EPP PRINT TEST	PASS	

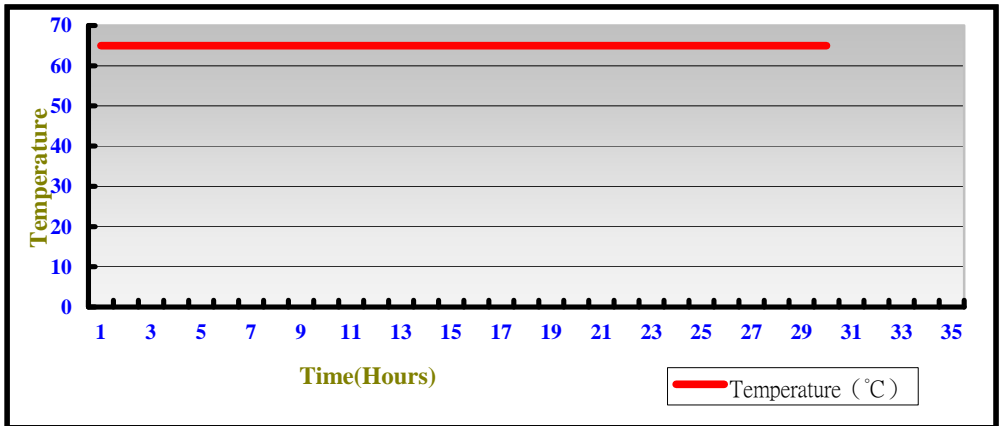
3. Environmental test

3.1 Temperature Test

Hardware Device list:

System Board	LE-575
CPU	Intel Atom 1.6GHZ
Memory	Transcend DDRII 800 2GB (H5PS1GB3EFA)
HDD	Western Digital WD800JD-00LSA0 80GB
Operating OS	Windows XP
Test Equipment	THERMOTRON 2800 Programmer/Controller
Test Program	3DMark 2003

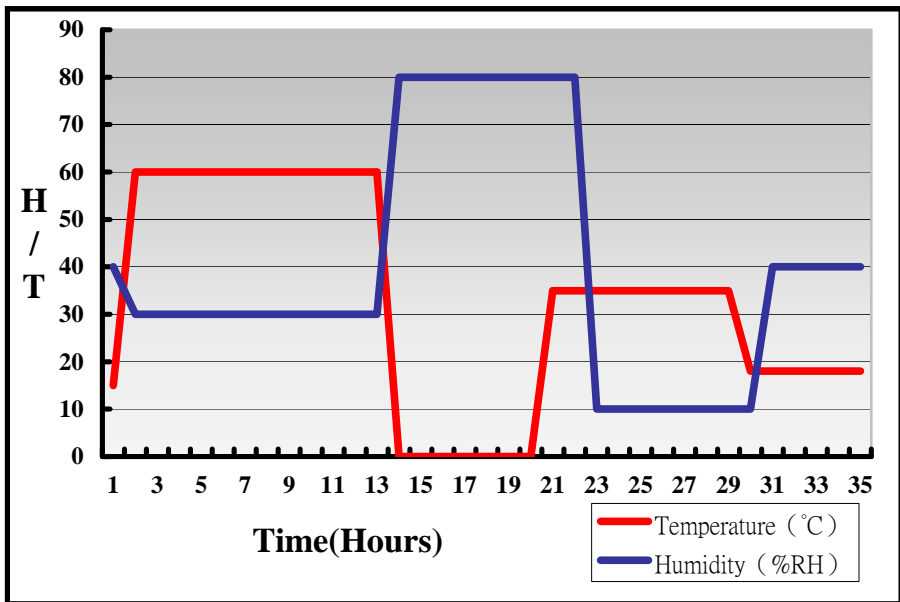
Test Result:



Hardware Device list:

System Board	LE-575
CPU	Intel Atom 1.6GHZ
Memory	Transcend DDRII 800 2GB (H5PS1GB3EFA)
HDD	Western Digital WD800JD-00LSA0 80GB
Operating OS	Windows XP
Test Equipment	THERMOTRON 2800 Programmer/Controller
Test Program	3DMark 2003

Test Result:



Boot Up Test:

Hardware Device list:

System Board	LE-575
CPU	Intel Atom 1.6GHZ
Memory	Transcend DDRII 800 2GB (H5PS1GB3EFA)
HDD	Western Digital WD800JD-00LSA0 80GB

Temperature	Result	Remark
-20°C	PASS	50 Times
70°C	PASS	50 Times

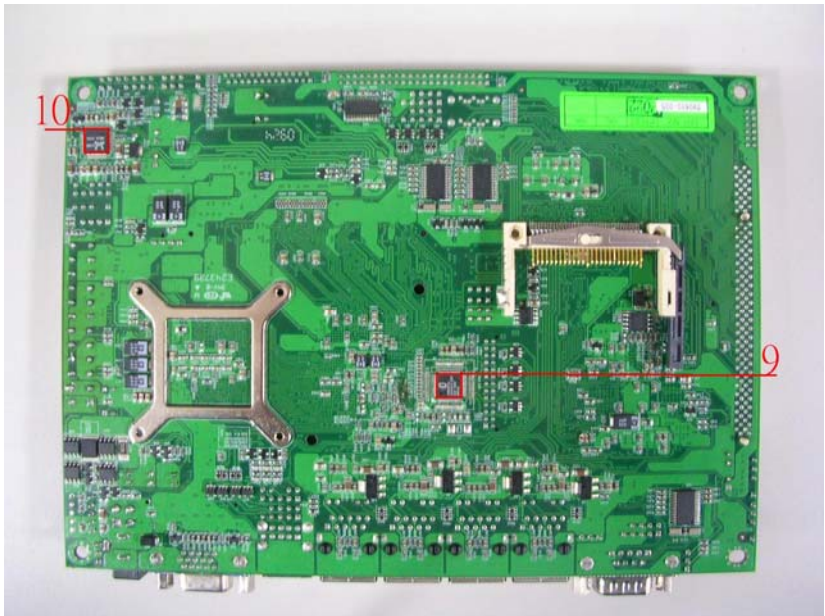
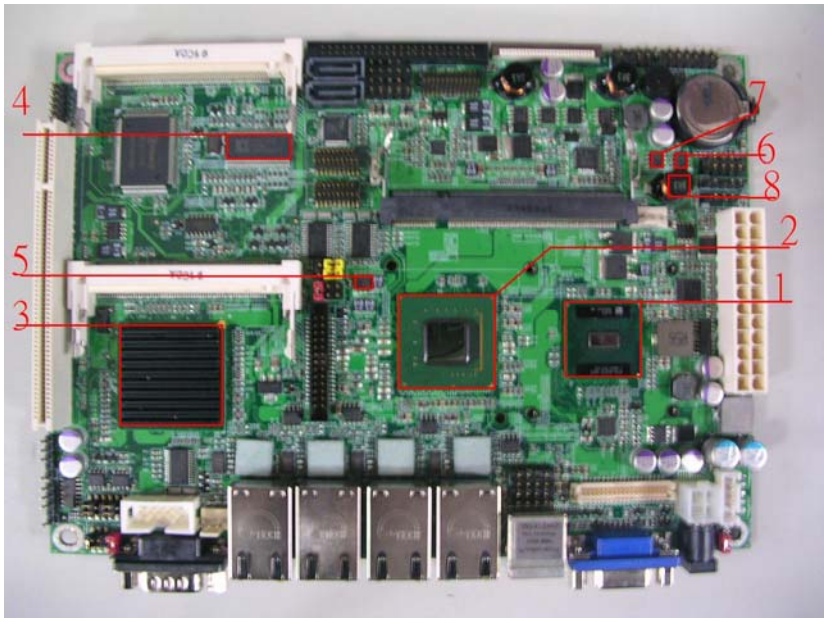
3.2 Thermal measurements at various points on the board

Test Environment :

CPU	Intel Atom 1.6GHZ
Memory	Transcend DDRII 800 2GB (H5PS1GB3EFA)
HDD	Western Digital WD800JD-00LSA0
Power	CWT SFX-200CPS3C-TL 200W
Operating System	Windows XP
Test Program	3D WinMark2003

Test Result:

Item	Environmental temperature	26°C
1	CPU	46.9°C
2	945GSE (Northbridge)	66.9°C
3	ICH7M (Southbridge)	55.3°C
4	U23 (ICS954128)	74.8°C
5	Q12(IRF7413E)	66.8°C
6	Q25(IRF7413E)	52.0°C
7	Q26(IRF7413E)	50.2°C
8	LC4(3R3)	52.3°C
9	U33(ICH7308)	59.3°C
10	U40(ICHALC888)	56.1°C



4. Reliability Test

4.1 Power Consumption Test

1. Test Environment:

Motherboard	LE575
CPU	Intel Atom 1.6GHZ
Memory	Transcend DDRII 667 2GB (7PEIID9HNL)
HDD	Seagate ST320413A 20GB

(A) Power Supply: CWT SFX-200CPS3C-TL 200W

Voltage	MS-DOS Boot up		Windows XP SP2 3DMARK 2003	
	Current (A)	Power (W)	Current (A)	Power (W)
12V	0.22	2.64	0.35	4.2
5V	2.67	13.35	2.71	13.55
3.3V	1.16	3.828	0.97	3.201
5VSB	0.41	2.05	0.099	0.495

(B) DC Power Supply: GWINSTEK SPS-3610

Voltage	MS-DOS Boot up		Windows XP SP2 3DMARK 2003	
	Current (A)	Power (W)	Current (A)	Power (W)
12V	2.59	31.08	2.36	28.32
24V	1.29	30.96	1.16	27.84

1.a.Test Environment:

The same as above but with LCD panel

Display Panel	LTM150XH-L01 15" LCD
---------------	----------------------

(A) Power Supply: CWT SFX-200CPS3C-TL 200W

Voltage	MS-DOS Boot up		Windows XP SP2 3DMARK 2003	
	Current (A)	Power (W)	Current (A)	Power (W)
12V	1.83	21.96	1.76	21.12
5V	3.06	15.3	3.34	16.7
3.3V	1.18	3.894	1	3.3
5VSB	0.478	2.39	0.098	0.49

(B)DC Power Supply: GWINSTEK SPS-3610

Voltage	MS-DOS Boot up		Windows XP SP2 3DMARK 2003	
	Current (A)	Power (W)	Current (A)	Power (W)
12V	4.01	48.12	4.17	50.04
24V	2.1	50.4	2.13	51.12

2.Test Environment:

Motherboard	LE575
CPU	Intel Atom 1.6GHZ
Memory	PQI DDRII 667 (QE22D9HNL) 2GB
HDD	Seagate ST320413A 20GB

(A) Power Supply: CWT SFX-TL 200W

Voltage	MS-DOS Boot up		Windows XP SP2 3DMARK 2003	
	Current (A)	Power (W)	Current (A)	Power (W)
12V	0.23	2.76	0.35	4.2
5V	2.71	13.55	2.97	14.85
3.3V	1.07	3.531	1	3.3
5VSB	0.424	2.12	0.104	0.52

(B) DC Power Supply: GWINSTEK SPS-3610

Voltage	MS-DOS Boot up		Windows XP SP2 3DMARK 2003	
	Current (A)	Power (W)	Current (A)	Power (W)
12V	2.63	31.56	2.37	28.44
24v	1.38	33.12	1.25	30

2.a.Test Environment:

The same as above but with LCD panel

Display Panel	LTM150XH-L01 15" LCD
---------------	----------------------

(A) Power Supply: CWT SFX-200CPS3C-TL 200W

Voltage	MS-DOS Boot up		Windows XP SP2 3DMARK 2003	
	Current (A)	Power (W)	Current (A)	Power (W)
12V	1.91	22.92	1.81	21.72
5V	3.07	15.35	3.27	16.35
3.3V	1.19	3.927	1.02	3.366
5VSB	0.435	2.175	0.111	0.555

(B) DC Power Supply: GWINSTEK SPS-3610

Voltage	MS-DOS Boot up		Windows XP SP2 3DMARK 2003	
	Current (A)	Power (W)	Current (A)	Power (W)
12V	4.01	48.12	4.1	49.2
24V	2.07	49.68	2.16	51.84

3. Test Environment:

Motherboard	LE575
CPU	Intel Atom 1.6GHZ
Memory	Kingston DDRII 533 1GB (HY5PS12B21C)
HDD	Seagate ST320413A 20GB

(A) Power Supply: CWT SFX-200CPS3C-TL 200W

Voltage	MS-DOS Boot up		Windows XP SP2 3DMARK 2003	
	Current (A)	Power (W)	Current (A)	Power (W)
12V	0.23	2.76	0.35	4.2
5V	2.5	12.5	2.78	13.9
3.3V	1.16	3.828	1	3.3
5VSB	0.43	2.15	0.108	0.54

(B) DC Power Supply: GWINSTEK SPS-3610

Voltage	MS-DOS Boot up		Windows XP SP2 3DMARK 2003	
	Current (A)	Power (W)	Current (A)	Power (W)
12V	2.71	32.52	2.43	29.16
24v	1.41	33.84	1.27	30.48

3.a.Test Environment:

The same as above but with LCD panel

Display Panel	LTM150XH-L01 15" LCD
---------------	----------------------

(A) Power Supply: CWT SFX-200CPS3C-TL 200W

Voltage	MS-DOS Boot up		Windows XP SP2 3DMARK 2003	
	Current (A)	Power (W)	Current (A)	Power (W)
12V	1.86	22.32	1.81	21.72
5V	2.88	14.4	3.2	16
3.3V	1.17	3.861	1.01	3.333
5VSB	0.425	2.125	0.107	0.535

(B) DC Power Supply: GWINSTEK SPS-3610

Voltage	MS-DOS Boot up		Windows XP SP2 3DMARK 2003	
	Current (A)	Power (W)	Current (A)	Power (W)
12V	3.94	47.28	4.08	48.96
24v	2.06	49.44	2.12	50.88

5. Performance Test

5.1 Business Win Stone 2002

Windows XP SP2

WEIGHTED SUITE	Test Environment	Result	Remark
Business Win stone2002	Intel Atom N270 1.60GHZ Kingston DDRII 533 1GB (HY5PS12B21C) HITACHI HDS722540VLA20 40GB	Pass	21 21.4 22.6 22.5
Business Win stone2002	Intel Atom N270 1.60GHZ Transcend DDRII 800 2GB (H5PS1GB3EFA) HITACHI HDS722540VLA20 40GB	Pass	21.4 21.3 22.6 22.8
Business Win stone2002	Intel Atom N270 1.60GHZ PQI DDRII 667 2GB (7QE22D9HNL) HITACHI HDS722540VLA20 40GB	Pass	22.8 22.6 22.7 22.6

5.2 Business Win Stone 2004

Windows XP SP2

WEIGHTED SUITE	Test Environment	Result	Remark
<p align="center">Business Win stone2004</p>	<p align="center">Intel Atom N270 1.60GHZ Kingston DDRII 533 1GB (HY5PS12B21C) HITACHI HDS722540VLA20 40GB</p>	<p align="center">Pass</p>	<p align="center">12.3 11.5 11 8.6</p>
<p align="center">Business Win stone2004</p>	<p align="center">Intel Atom N270 1.60GHZ Transcend DDRII 800 2GB (H5PS1GB3EFA) HITACHI HDS722540VLA20 40GB</p>	<p align="center">Pass</p>	<p align="center">11.2 10.9 10 10.6</p>
<p align="center">Business Win stone2004</p>	<p align="center">Intel Atom N270 1.60GHZ PQI DDRII 667 2GB (7QE22D9HNL) HITACHI HDS722540VLA20 40GB</p>	<p align="center">Pass</p>	<p align="center">11.4 12.2 10 9.4</p>

5.3 Content Creation Winstone 2001

Windows XP SP2

WEIGHTED SUITE	Test Environment	Result	Remark
<p align="center">Content Creation Winstone 2001</p>	<p align="center">Intel Atom N270 1.60GHZ Kingston DDRII 533 1GB (HY5PS12B21C) HITACHI HDS722540VLA20 40GB</p>	<p align="center">Pass</p>	<p align="center">61 60.9 60.9 60.9</p>
<p align="center">Content Creation Winstone 2001</p>	<p align="center">Intel Atom N270 1.60GHZ Transcend DDRII 800 2GB (H5PS1GB3EFA) HITACHI HDS722540VLA20 40GB</p>	<p align="center">Pass</p>	<p align="center">61.3 61.3 61.3 61.1</p>
<p align="center">Content Creation Winstone 2001</p>	<p align="center">Intel Atom N270 1.60GHZ PQI DDRII 667 2GB (7QE22D9HNL) HITACHI HDS722540VLA20 40GB</p>	<p align="center">Pass</p>	<p align="center">60.9 61.1 61 61.2</p>

5.3 Content Creation Winstone 2004

Windows XP SP2

WEIGHTED SUITE	Test Environment	Result	Remark
Content Creation Winstone 2004	Intel Atom N270 1.60GHZ Kingston DDRII 533 1GB (HY5PS12B21C) HITACHI HDS722540VLA20 40GB	Pass	13.4 13.4 13.6 13.5
Content Creation Winstone 2004	Intel Atom N270 1.60GHZ Transcend DDRII 800 2GB (H5PS1GB3EFA) HITACHI HDS722540VLA20 40GB	Pass	13.7 13.7 13.8 13.8
Content Creation Winstone 2004	Intel Atom N270 1.60GHZ PQI DDRII 667 2GB (7QE22D9HNL) HITACHI HDS722540VLA20 40GB	Pass	13.8 13.6 13.6 13.8

5.4 3D MARK(2001、2003、2005)

Windows XP SP2

WEIGHTED SUITE	Test Environment	Result	Remark
3DMARK2001 Scores	Intel Atom N270 1.60GHZ	Pass	2810
3DMARK2003 Scores	Kingston DDRII 533 1GB (HY5PS12B21C) HITACHI HDS722540VLA20 40GB	Pass	720
3DMARK2005 Scores		Pass	237

Windows XP SP2

WEIGHTED SUITE	Test Environment	Result	Remark
3DMARK2001 Scores	Intel Atom N270 1.60GHZ	Pass	2848
3DMARK2003 Scores	Transcend DDRII 800 2GB (H5PS1GB3EFA) HITACHI HDS722540VLA20 40GB	Pass	723
3DMARK2005 Scores		Pass	241

Windows XP SP2

WEIGHTED SUITE	Test Environment	Result	Remark
3DMARK2001 Scores	Intel Atom N270 1.60GHZ PQI DDRII 667 2GB (7QE22D9HNL) HITACHI HDS722540VLA20 40GB	Pass	2839
3DMARK2003 Scores		Pass	728
3DMARK2005 Scores		Pass	244

5.5 3D MARK2006

Windows XP SP2

Item	WEIGHTED SUITE	Test Environment	Result	Remark
1	3DMARK Source	Intel Atom N270 1.60GHZ Kingston DDRII 533 1GB (HY5PS12B21C) HITACHI HDS722540VLA20 40GB	Pass	84
2	SM2.0 Source		Pass	39
3	HDR/SM3.0 Source		Pass	N/A
4	CPU Source		Pass	492

Windows XP SP2

Item	WEIGHTED SUITE	Test Environment	Result	Remark
1	3DMARK Source	Intel Atom N270 1.60GHZ Transcend DDRII 800 2GB (H5PS1GB3EFA) HITACHI HDS722540VLA20 40GB	Pass	75
2	SM2.0 Source		Pass	34
3	HDR/SM3.0 Source		Pass	N/A
4	CPU Source		Pass	493

Windows XP SP2

Item	WEIGHTED SUITE	Test Environment	Result	Remark
1	3DMARK Source	Intel Atom N270 1.60GHZ PQI DDRII 667 2GB (7QE22D9HNL) HITACHI HDS722540VLA20 40GB	Pass	86
2	SM2.0 Source		Pass	40
3	HDR/SM3.0 Source		Pass	N/A
4	CPU Source		Pass	494

5.6 PC MARK2002

Test Environment
Intel Atom N270 1.60GHZ Kingston DDRII 533 1GB (HY5PS12B21C) HITACHI HDS722540VLA20 40GB

Windows XP SP2

Item	WEIGHTED SUITE	Result	Remark
1	CPU test Source	Pass	2653
2	Memory test Source	Pass	6252
3	HDD test Source	Pass	799

Test Environment
Intel Atom N270 1.60GHZ Transcend DDRII 800 2GB (H5PS1GB3EFA) HITACHI HDS722540VLA20 40GB

Windows XP SP2

Item	WEIGHTED SUITE	Result	Remark
1	CPU test Source	Pass	2652
2	Memory test Source	Pass	6370
3	HDD test Source	Pass	789

Test Environment
Intel Atom N270 1.60GHZ PQI DDRII 667 2GB (7QE22D9HNL) HITACHI HDS722540VLA20 40GB

Windows XP SP2

Item	WEIGHTED SUITE	Result	Remark
1	CPU test Source	Pass	2653
2	Memory test Source	Pass	6356
3	HDD test Source	Pass	795

5.7 PC MARK2004

Test Environment
Intel Atom N270 1.60GHZ Kingston DDRII 533 1GB (HY5PS12B21C) HITACHI HDS722540VLA20 40GB

Windows XP PS2

Item	WEIGHTED SUITE	Result	Remark
1	PCMark Source	Pass	2044
2	CPU test Source	Pass	2106
3	Memory test Source	Pass	2980
4	Graphic test Source	Pass	681
5	HDD test Source	Pass	N/A

Test Environment
Intel Atom N270 1.60GHZ Transcend DDRII 800 2GB (H5PS1GB3EFA) HITACHI HDS722540VLA20 40GB

Windows XP PS2

Item	WEIGHTED SUITE	Result	Remark
1	PCMark Source	Pass	2050
2	CPU test Source	Pass	2107
3	Memory test Source	Pass	3013
4	Graphic test Source	Pass	653
5	HDD test Source	Pass	N/A

Test Environment
Intel Atom N270 1.60GHZ PQI DDRII 667 2GB (7QE22D9HNL) HITACHI HDS722540VLA20 40GB

Windows XP PS2

Item	WEIGHTED SUITE	Result	Remark
1	PCMark Source	Pass	2053
2	CPU test Source	Pass	2113
3	Memory test Source	Pass	3008
4	Graphic test Source	Pass	653
5	HDD test Source	Pass	N/A

5.8 PC MARK2005

Test Environment
Intel Atom N270 1.60GHZ Kingston DDRII 533 1GB (HY5PS12B21C) HITACHI HDS722540VLA20 40GB

Windows XP SP2

Item	WEIGHTED SUITE	Result	Remark
1	System test Source	Pass	1533
2	CPU test Source	Pass	1499
3	Memory test Source	Pass	2431
4	Graphic test Source	Pass	607
5	HDD test Source	Pass	3024

Test Environment
Intel Atom N270 1.60GHZ Transcend DDRII 800 2GB (H5PS1GB3EFA) HITACHI HDS722540VLA20 40GB

Windows XP SP2

Item	WEIGHTED SUITE	Result	Remark
1	System test Source	Pass	1536
2	CPU test Source	Pass	1498
3	Memory test Source	Pass	2423
4	Graphic test Source	Pass	615
5	HDD test Source	Pass	3028

Test Environment
Intel Atom N270 1.60GHZ PQI DDRII 667 2GB (7QE22D9HNL) Seagate ST320413A 20GB

Windows XP SP2

Item	WEIGHTED SUITE	Result	Remark
1	System test Source	Pass	1467
2	CPU test Source	Pass	1500
3	Memory test Source	Pass	2424
4	Graphic test Source	Pass	559
5	HDD test Source	Pass	3041

5.9 PATA Performance

5.9.1 PATA HDD

Test envirement:

OS Windows XP professional SP2

Program (HDTune)

HDD MODEL	INTERFACE	capacity	Average	Burst Rate	Access time
Western Digital WD2500JB -00REA0	PATA	250GB	28.4MB/sec	27.7 MB/sec	13.5ms
Seagate ST320 413A		20GB	22.4MB/sec	25.9 MB/sec	18.6ms
Seagate ST330 631A		30GB	16.6MB/sec	25.4 MB/sec	14.4ms
QUANTUM FIREBALL _TMI		1GB	19MB/sec	4.7 MB/sec	4.2ms
HITACHI HDS72254 0VLA20		40GB	28.5MB/sec	28.9 MB/sec	13.4ms

5.9.2 PATA CD-ROM

Test envirement:

OS Windows XP professional SP2

Program (NERO)

CD-ROM MODEL	INTERFACE	Average speed	Fill READ	Burst Rate	CD
ASUS CD-S520/A20K	PATA	12.56x	202ms	2MB/s	52 X CD-R
SONY CDU7811 PY0A		14.16x	257ms	2MB/s	
LITE-ONLTR-401255 ZS0K		48.39x	186ms	22MB/s	

5.10 SATA Performance

5.10.1 SATA HDD

Test envirement:

OS Windows XP professional SP2

Program (HDTune)

HDD MODEL	INTERFACE	capacity	Average	Burst Rate	Access time
Seagate ST316 0815AS	SATA	160GB	59MB/sec	91.4 MB/sec	15.6ms
Western Digital WD800JD-0 0LSA0		80GB	52.9MB/se c	86.9 MB/sec	13.7ms
Western Digital WD2500ks- 00MJB0		250GB	52.9MB/se c	86.9 MB/sec	15.6ms

5.10.2 SATA CD-ROM

Test envirement:

OS Windows XP professional SP2

Program (NERO)

CD-ROM MODEL	INTERFACE	Average speed	Fill READ	Burst Rate	CD
ASUS DRW 1814BLT 1.13	SATA	39.75x	179ms	39MB/s	52 X CD-R
PIONEER DVD-RW DVR-212 1.21		48.82X	198ms	39MB/s	

5.11 USB Performance

5.11.1 USB HDD

Test envirement:

OS Windows XP professional SP2

Program (HDTune)

HDD MODEL	INTERFACE	capacity	Average	Burst Rate	Access time
Western Digital WD6400H 1Q-00	USB	640GB	27.5MB/sec	21.5 MB/sec	14.8ms

5.11.2 UBS CD-ROM

Test envirement:

OS Windows XP professional SP2

Program (NERO)

CD-ROM MODEL	INTERFACE	Average speed	Fill READ	Burst Rate	CD
Slimtype DVDRW SOSW-8335 VSDA	USB	23.86x	184ms	18MB/s	52X CD-R
Slimtype COMBO SSC-2485K 5KO4		10.48x	200ms	19MB/s	