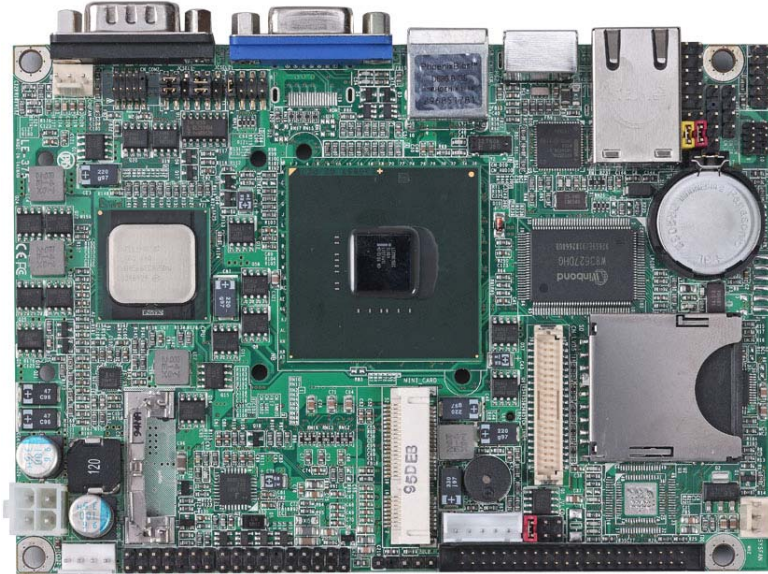


Test Report



Product Name	LE-375
Product Version	B
Issued Date	13.February.2015
Report Edition	1.3
BIOS Version	1.2
Testing Engineer	JEFF(375Q)
Testing Engineer	RICK(375R/T)

Index

Index	2
1. Function test.....	4
1.1 Hardware function.....	4
1.2 BIOS function	6
1.3 Driver	7
2. Compatibility test	9
2.1 CPU Test.....	9
2.2 Memory Test	10
2.3 VGA Graphic Quality Test.....	11
2.4 Audio	12
2.5 HDD Test	14
2.6 CD-ROM Test	15
2.7 USB Test.....	16
2.8 Serial Port Test	18
2.9 PS2 Keyboard 、 Mouse Test.....	20
2.10 LAN Test.....	22
2.11 Power Supply Test.....	23
2.12 Os Install	23
3. Environmental test	24
3.1 Temperature Test.....	24
3.2 Temperature Test.....	27
3.3 Temperature Test.....	30
3.2 Thermal measurements at various points on the board	33
4. Reliability Test	42
Power Consumption Test	42
5. Performance Test	66
5.1 Business Win Stone 2002.....	66

5.2 Business Win Stone 2004.....	66
5.3 Content Creation Winstone 2001.....	68
5.4 Content Creation Winstone 2004.....	69
5.5 3D MARK(2001、2003、2005).....	70
5.6 3D MARK2006.....	73
5.7 PC MARK2002.....	76
5.8 PC MARK2004.....	79
5.9 PC MARK2005.....	83
5.10 Storage Performance.....	87

1. Function test

1.1 Hardware function

Base Function Test

Item	Description	Result
1	Power Button	PASS
2	Reset	PASS
3	Power LED	PASS
4	HDD LED	PASS
5	SYSFAN	PASS
6	CPUFAN	PASS
7	PS2	PASS
8	LAN1	PASS
9	DDRII	PASS
10	IDE	PASS
11	USB1	PASS
12	USB2	PASS
13	LVDS	PASS
14	INV	PASS
15	CF	PASS
16	DC_OUT	PASS
17	Audio	PASS
18	USB	PASS
19	USB1	PASS
20	USB2	PASS
21	COM1	PASS
22	COM2	PASS

23	IrDA	PASS
24	CDIN	PASS
25	LPC	PASS
26	DIO	PASS
27	MINI_CRAD	PASS
28	SD	PASS

Jumper

Item	Description	Result
1	JAT	PASS
2	JVLCD	PASS
3	JCSEL1	PASS
4	JCSEL2	PASS

1.2 BIOS function

Item	Description	Result	Remark
1	Press 'Del' to run Setup Utility	PASS	
2	Ctrl-Alt-Del – Soft-Reboot	PASS	
3	Save & Exit Setup	PASS	
4	Date & Time Setting	PASS	
5	Halt On	PASS	
6	Quick Power On Self Test	PASS	
7	Boot Device Setting	PASS	
8	Boot Up Num Lock Status	PASS	
9	VGA Setting	PASS	
10	Intel HD Audio Controller	PASS	
11	PCI Express Device	PASS	
12	Onboard Serial Port	PASS	
13	UART Mode Selec	PASS	
14	RxD , Txd Active	PASS	
15	IR Transmission Delay	PASS	
16	UR2 duplex Mode	PASS	
17	Use IR Pins	PASS	
18	USB Device Setting	PASS	
19	Soft-Off by PWRBTN	PASS	
20	Shutdown Temperature	PASS	
21	Watch Dog Timer	PASS	
22	Set Supervisor PASSword	PASS	
23	Set User PASSword	PASS	

1.3 Driver

CD Edition : IPCi2-1.4

1. Windows XP SP2 Driver Test

Item	Description	Result	version
1	Chipset Driver	PASS	8.8.0.1011
2.a	VGA Driver (375QT 375QD)	PASS	6.14.11.1012
2.b	VGA Driver (375QX)	PASS	10.1.0.1418
3	Audio Driver	PASS	5.11.0.5464
4	LAN Driver	PASS	10.3.49.0

2. Windows Server 2003 Driver Test

Item	Description	Result	version
1	Chipset Driver	PASS	8.8.0.1011
2	VGA Driver	NONE	
3	Audio Driver	PASS	5.11.0.5464
4	LAN Driver	PASS	10.3.49.0

P.S NO SD

3. Windows 2000 SP4 Driver Test

Item	Description	Result	version
1	Chipset Driver	PASS	9.0.0.1008
2	VGA Driver	NONE	
3	Audio Driver	PASS	5.11.0.5464
4	LAN Driver	PASS	10.3.49.0

P.S NO SD

4. Windows Vista 32 bit Driver Test

Item	Description	Result	version
1	Chipset Driver	PASS	8.8.0.1011
2.a	VGA Driver (375QT 375QD)	PASS	7.14.10.1093
2.b	VGA Driver(375QX)	PASS	10.1.0.1418
3	Audio Driver	PASS	6.0.1.5473
4	LAN Driver	PASS	10.3.49.0

5. Windows7 32 bit Driver Test

Item	Description	Result	version
1	Chipset Driver	PASS	8.8.0.1011
2	VGA Driver (375QT)	PASS	8.14.10.2030
3	Audio Driver	PASS	6.0.1.6083
4	LAN Driver	PASS	11.0.103.0

6. Windows2008 32 bit Driver Test

Item	Description	Result	Version
1	Chipset Driver	PASS	8.8.0.1011
2.a	VGA Driver (375QT 375QD)	PASS	7.14.10.1093
2.b	VGA Driver (375QX)	PASS	10.1.0.1418
3	Audio Driver	PASS	6.0.1.5473
4	LAN Driver	PASS	10.3.49.0

2. Compatibility test

2.1 CPU Test

Test environment:

OS Windows XP professional SP2

Test program : PC MARK 2005

Spec	CPU Speed	Family	Processor	FSB	L2 Size	Result
SLGPQ	1.10 GHz	Atom	Z510P	400 MHz	512KB	PASS
SLGPR	1.10 GHz	Atom	Z510PT	400 MHz	512KB	PASS
SLGPP	1.33 GHz	Atom	Z520PT	533 MHz	512KB	PASS

2.2 Memory Test

Test environment:

OS Windows XP professional SP2

Test program : PC MARK 2005

Manufacturer	Chip	DDRII frequency	Capacity Mbytes	Memory test Source
Kingston	D6408TEB GWL37	DDRII 533	1GB	PASS
Kingston	092809CQ4 00	DDRII 800	1GB	PASS
ADATA	AD20908A 8A-3EG208 27	DDRII 667	1GB	PASS
ELPIDA	0610A9100	DDRII 533	512MB	PASS

2.3 VGA Graphic Quality Test

Test environment:

OS Windows XP professional SP2

Driver version : 6.14.11.1012

Resolution	Color	Result	Remark
640*480	16 /32bit	PASS	
800*600	16 /32bit	PASS	
1024*768	16 /32bit	PASS	
1280*720	16 /32bit	PASS	
1280*960	16 /32bit	PASS	
1280*1024	16 /32bit	PASS	
1920*1080	16 /32bit	PASS	

2.4 Audio

Test environment:

OS Windows XP professional SP2

Driver version : 5.10.0.5464

Item	Description	Result	Remark
1	2 CH	PASS	
2	Microphone	PASS	
3	CDIN	PASS	

OS Windows SERVER 2003

Driver version : 5.10.0.5464

Item	Description	Result	Remark
1	2 CH	PASS	
2	Microphone	PASS	
3	CDIN	PASS	

OS Windows 2000 SP4

Driver version : 5.10.0.5464

Item	Description	Result	Remark
1	2 CH	PASS	
2	Microphone	PASS	
3	CDIN	PASS	

OS Windows Vista 32 bit

Driver version : 6.0.1.5473

Item	Description	Result	Remark
1	2 CH	PASS	
2	Microphone	PASS	
3	CDIN	PASS	

OS Windows7 32bit

Driver version : 6.0.1.6083

Item	Description	Result	Remark
1	2 CH	PASS	
2	Microphone	PASS	
3	CDIN	PASS	

OS Windows 2008 32bit

Driver version : 6.0.1.5473

Item	Description	Result	Remark
1	2 CH	PASS	
2	Microphone	PASS	
3	CDIN	PASS	

2.5 HDD Test

Test envirement:

OS Windows XP professional SP2

HDD Model	Interface	Capacity	HDD Size Detect	HDD Data Transfer	HDD LED Check
Western Digital WD2500JB-00 REA0	IDE	250 GB	PASS	PASS	PASS
Seagate ST940815A	IDE	400 GB	PASS	PASS	PASS
Western Digital WD2500JB-00 GVC0	IDE	250 GB	PASS	PASS	PASS
Seagate ST320413A	IDE	20 GB	PASS	PASS	PASS
Seagate ST33221A	IDE	3 GB	PASS	PASS	PASS
HITACHI IC25N040ATM R04-0	IDE	40 GB	PASS	PASS	PASS
TOSHIBA MK4032GAX	IDE	40 GB	PASS	PASS	PASS

Seagate ST320413A	IDE	20 GB	PASS	PASS	PASS
Western Digital WD2500JB-00 GVC0	USB	640 GB	PASS	PASS	PASS

2.6 CD-ROM Test

Test environment:

OS Windows XP professional SP2

CD-ROM Model	Interface	CD-ROM Detect	CD-ROM Data Transfer	PLAY DVD
ASUS CD-S520	IDE	PASS	PASS	PASS
PIONEER DVD-127D	IDE	PASS	PASS	PASS
LITEON DVD SOSC-2485KX	USB	PASS	PASS	PASS
LITEON DVD SOSW-833XS	USB	PASS	PASS	PASS

2.7 USB Test

1. Windows XP SP2

Item	Result	Remark
External USB Keyboard Test	PASS	
External USB Mouse Test	PASS	
Hot plugging test	PASS	
CD ROM	PASS	
USB Mass storage	PASS	

2. Windows Server 2003

Item	Result	Remark
External USB Keyboard Test	PASS	
External USB Mouse Test	PASS	
Hot plugging test	PASS	
CD ROM	PASS	
USB Mass storage	PASS	

3. Windows 2000 SP4

Item	Result	Remark
External USB Keyboard Test	PASS	
External USB Mouse Test	PASS	
Hot plugging test	PASS	
CD ROM	PASS	
USB Mass storage	PASS	

4. Windows Vista 32 bit

Item	Result	Remark
External USB Keyboard Test	PASS	
External USB Mouse Test	PASS	
Hot plugging test	PASS	
CD ROM	PASS	
USB Mass storage	PASS	

5. Windows7 32bit

Item	Result	Remark
External USB Keyboard Test	PASS	
External USB Mouse Test	PASS	
Hot plugging test	PASS	
CD ROM	PASS	
USB Mass storage	PASS	

6. Windows2008 32bit

Item	Result	Remark
External USB Keyboard Test	PASS	
External USB Mouse Test	PASS	
Hot plugging test	PASS	
CD ROM	PASS	
USB Mass storage	PASS	

2.8 Serial Port Test

1. MS-DOS

Item	Description	Result	Remark
1	RS-232 Mouse Test	PASS	
2	RS-422 & RS-485	PASS	
3	PC Check	PASS	
4	TS	PASS	

2. Windows Server 2003

Item	Description	Result	Remark
1	Device Manager Check	PASS	
2	RS-232 Mouse Test	PASS	
3	b&b com port test	PASS	

3. Windows XP SP2

Item	Description	Result	Remark
1	Device Manager Check	PASS	
2	RS-232 Mouse Test	PASS	
3	b&b com port test	PASS	

4. Windows 2000 SP4

Item	Description	Result	Remark
1	Device Manager Check	PASS	
2	RS-232 Mouse Test	PASS	
3	b&b com port test	PASS	

5. Windows Vista 32 bit

Item	Description	Result	Remark
1	Device Manager Check	PASS	
2	RS-232 Mouse Test	PASS	

6. Windows7 32 bit

Item	Description	Result	Remark
1	Device Manager Check	PASS	
2	RS-232 Mouse Test	PASS	

7. Windows2008 32 bit

Item	Description	Result	Remark
1	Device Manager Check	PASS	
2	RS-232 Mouse Test	PASS	
3	b&b com port test	PASS	

2.9 PS2 Keyboard 、 Mouse Test

1. MS-DOS

Item	Description	Result	Remark
1	Keyboard LED Status Test	PASS	
2	Keyboard Typing Test	PASS	
3	Mouse Detect Test	PASS	

2. Windows XP SP2

Item	Description	Result	Remark
1	Device Manager Check	PASS	
2	Keyboard Typing Test	PASS	
3	Mouse Detect Test	PASS	

3. Windows Vista 32 bit

Item	Description	Result	Remark
1	Device Manager Check	PASS	
2	Keyboard Typing Test	PASS	
3	Mouse Detect Test	PASS	

4. Windows Server 2003

Item	Description	Result	Remark
1	Device Manager Check	PASS	
2	Keyboard Typing Test	PASS	
3	Mouse Detect Test	PASS	

5. Windows 2000 SP4

Item	Description	Result	Remark
1	Device Manager Check	PASS	
2	Keyboard Typing Test	PASS	
3	Mouse Detect Test	PASS	

6. Windows7 32bit

Item	Description	Result	Remark
1	Device Manager Check	PASS	
2	Keyboard Typing Test	PASS	
3	Mouse Detect Test	PASS	

7. Windows2008 32bit

Item	Description	Result	Remark
1	Device Manager Check	PASS	
2	Keyboard Typing Test	PASS	
3	Mouse Detect Test	PASS	

2.10 LAN Test

Data Transfer Test environment:

-CAT 6 UTP 100M

-8 HR. continuous

1. Windows XP SP2

Item	Description	Result	Remark
1	Device Manager Check	PASS	
2	Data Transfer Test	PASS	

2. Windows Server 2003

Item	Description	Result	Remark
1	Device Manager Check	PASS	
2	Data Transfer Test	PASS	

3. Windows 2000 SP4

Item	Description	Result	Remark
1	Device Manager Check	PASS	
2	Data Transfer Test	PASS	

4. Windows Vista 32bit

Item	Description	Result	Remark
1	Device Manager Check	PASS	
2	Data Transfer Test	PASS	

5. Windows7 32bit

Item	Description	Result	Remark
1	Device Manager Check	PASS	
2	Data Transfer Test	PASS	

6. Windows2008 32bit

Item	Description	Result	Remark
1	Device Manager Check	PASS	

2	Data Transfer Test	PASS	
---	--------------------	------	--

2.11 Power Supply Test

Item	TYPE	Description	Result	Remark
1	ADAPTER	LI SHIN 0219B1280(80W)	PASS	
2	ADAPTER	LI SHIN 0227B19120(120W)	PASS	
3	DC Power Supply	GWINSTEK SPS-3610	PASS	

2.12 Os Install

Item	Description	Result	Remark
2	Windows Vista 32 bit	PASS	
3	Windows XP SP2	PASS	
4	Windows Server 2003	PASS	
5	Windows 2000 SP4	PASS	
6	Windows7 32bit	PASS	
7	Windows2008 32bit	PASS	
8	Ubuntu 9.04	PASS	

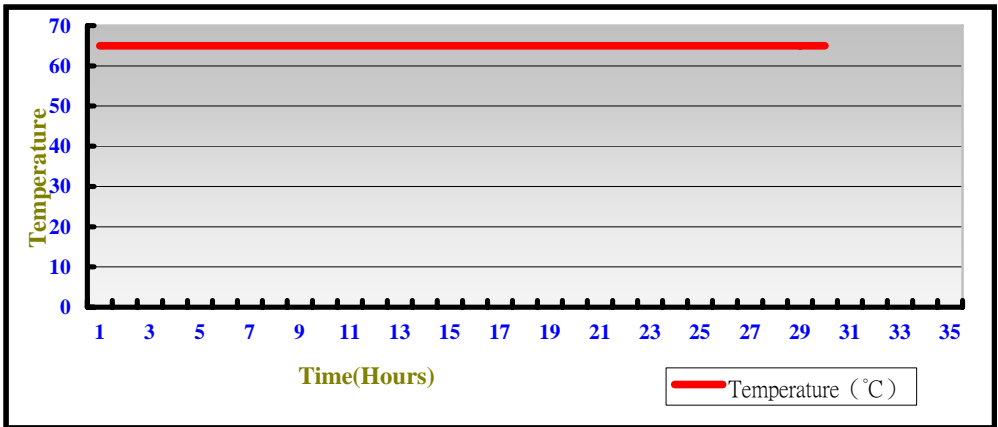
3. Environmental test

3.1 Temperature Test

Hardware Device list:

System Board	LE-375QT
CPU	Intel Atom Z510P 1.10GHz
Memory	ADATA DDRII 667 1GB (AD20908A8A-3EG20827)
HDD	Western Digital WD800JD-00LSA0 80GB
Operating OS	Windows XP
Test Equipment	THERMOTRON 2800 Programmer/Controller
Test Program	3DMark 2003

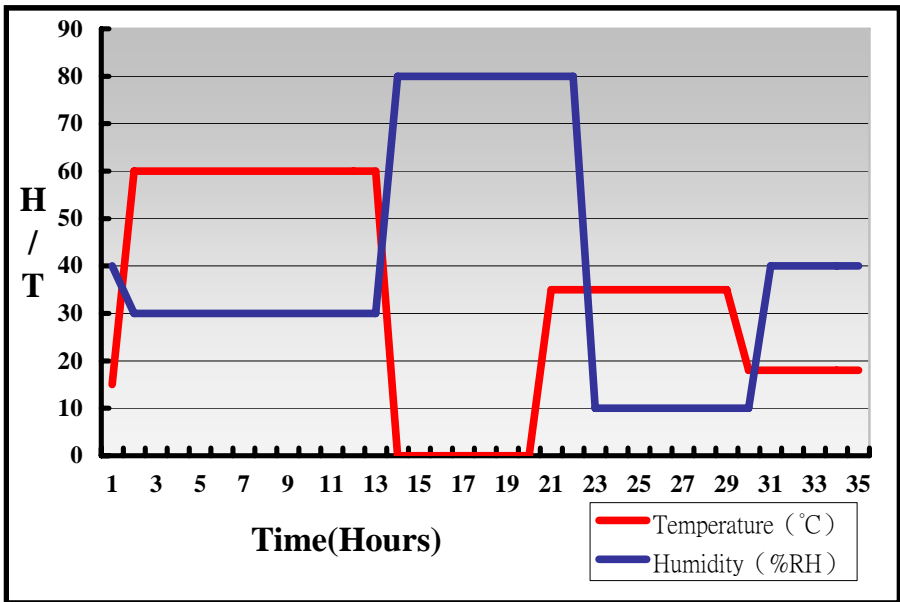
Test Result:



Hardware Device list:

System Board	LE-375QT
CPU	Intel Atom Z510P 1.10GHz
Memory	ADATA DDRII 667 1GB (AD20908A8A-3EG20827)
HDD	Western Digital WD800JD-00LSA0 80GB
Operating OS	Windows XP
Test Equipment	THERMOTRON 2800 Programmer/Controller
Test Program	3DMark 2003

Test Result:



Boot Up Test:

Hardware Device list:

System Board	LE-375QT
CPU	Intel Atom Z510P 1.10GHz
Memory	ADATA DDRII 667 1GB (3EG20827)
HDD	Western Digital WD800JD-00LSA0 80GB

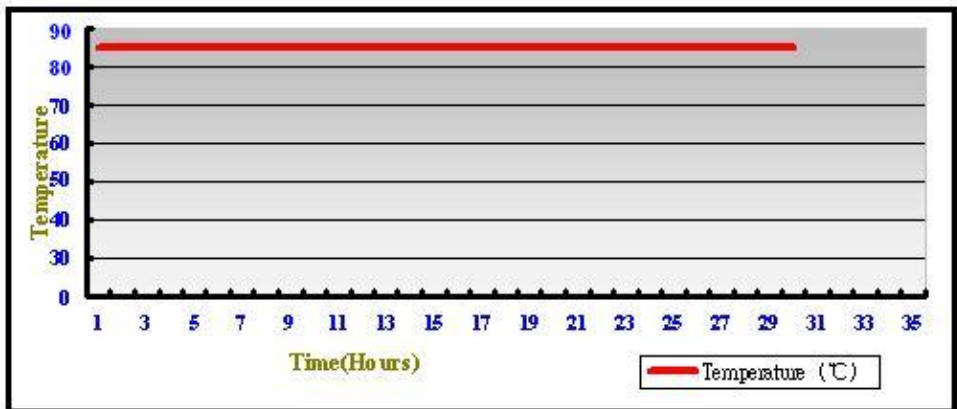
Temperature	Result	Remark
0°C	PASS	50 Times
65°C	PASS	50 Times

3.2 Temperature Test

Hardware Device list:

System Board	LE-375RT
CPU	Intel Atom Z510PT 1.10GHz
Memory	INNODISK DDR2 800 1GB (HY5PS1G1631C)
HDD	Western Digital WD2500JB-00REA0 250GB
Operating OS	Windows XP
Test Equipment	THERMOTRON 2800 Programmer/Controller
Test Program	Burnin5.3+ prime95

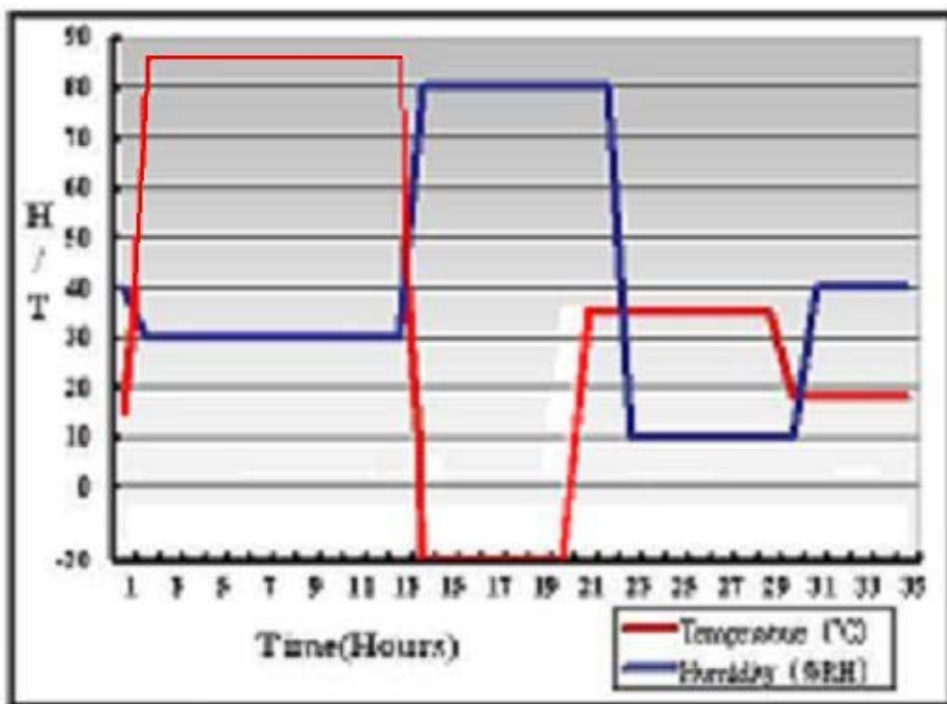
Test Result:



Hardware Device list:

System Board	LE-375RT
CPU	Intel Atom Z510PT 1.10GHZ
Memory	INNODISK DDR2 800 1GB (HY5PS1G1631C)
HDD	Western Digital WD2500JB-00REA0 250GB
Operating OS	Windows XP
Test Equipment	THERMOTRON 2800 Programmer/Controller
Test Program	Burnin5.3+ prime95

Test Result:



Boot Up Test:

Hardware Device list:

System Board	LE-375RT
CPU	Intel Atom Z510PT 1.10GHZ
Memory	INNODISK DDR2 800 1GB (HY5PS1G1631C)
HDD	Western Digital WD2500JB-00REA0 250GB

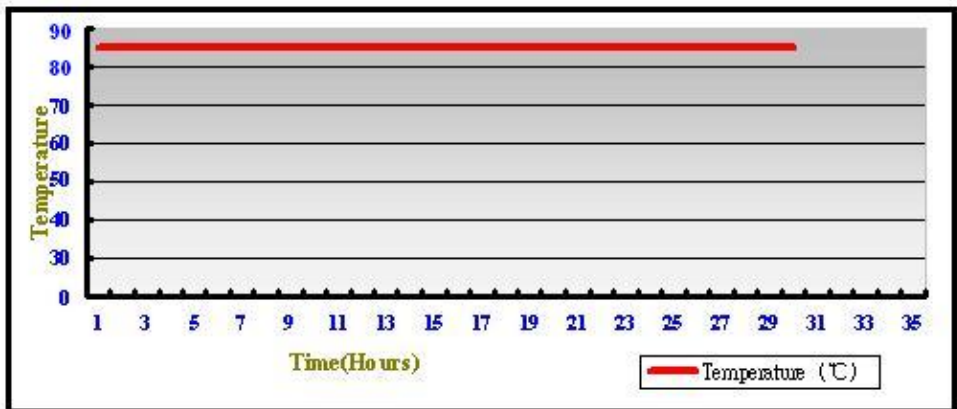
Temperature	Result	Remark
-20°C	PASS	50 Times
85°C	PASS	50 Times

3.3 Temperature Test

Hardware Device list:

System Board	LE-375PT
CPU	Intel Atom Z520PT 1.33GHz
Memory	INNODISK DDR2 800 1GB (HY5PS1G1631C)
HDD	Western Digital WD2500JB-00REA0 250GB
Operating OS	Windows XP
Test Equipment	THERMOTRON 2800 Programmer/Controller
Test Program	Burnin5.3+ prime95

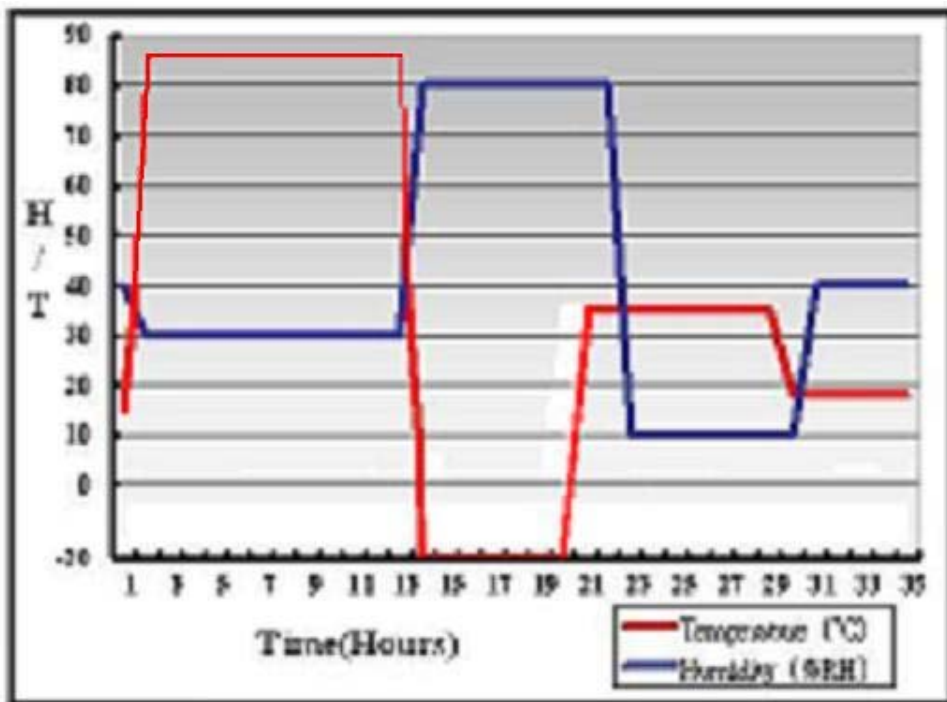
Test Result:



Hardware Device list:

System Board	LE-375PT
CPU	Intel Atom Z520PT 1.33GHz
Memory	INNODISK DDR2 800 1GB (HY5PS1G1631C)
HDD	Western Digital WD2500JB-00REA0 250GB
Operating OS	Windows XP
Test Equipment	THERMOTRON 2800 Programmer/Controller
Test Program	Burnin5.3+ prime95

Test Result:



Boot Up Test:

Hardware Device list:

System Board	LE-375PT
CPU	Intel Atom Z520PT 1.33GHz
Memory	INNODISK DDR2 800 1GB (HY5PS1G1631C)
HDD	Western Digital WD2500JB-00REA0 250GB

Temperature	Result	Remark
-20°C	PASS	50 Times
85°C	PASS	50 Times

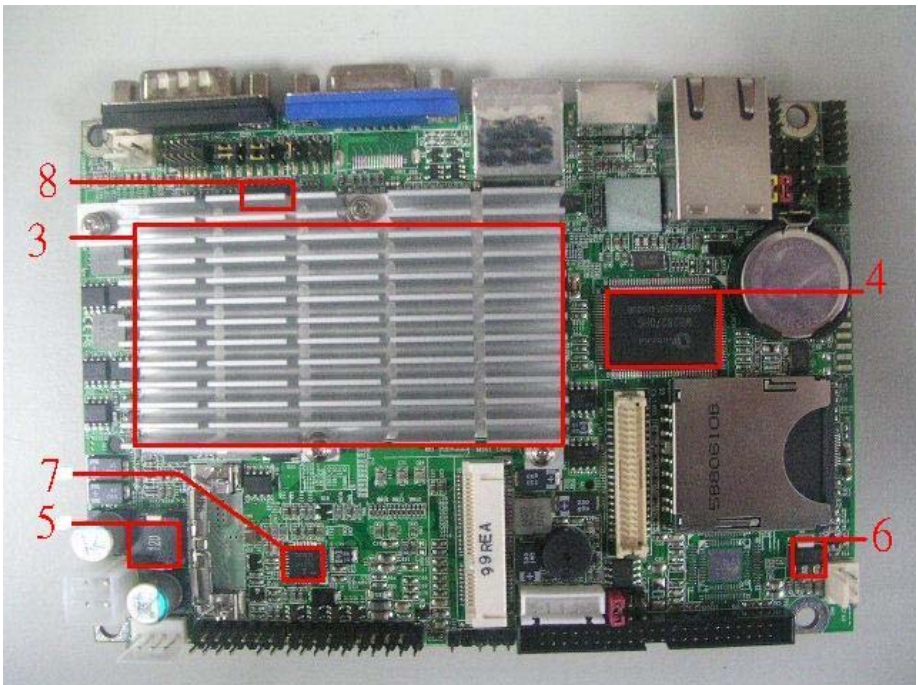
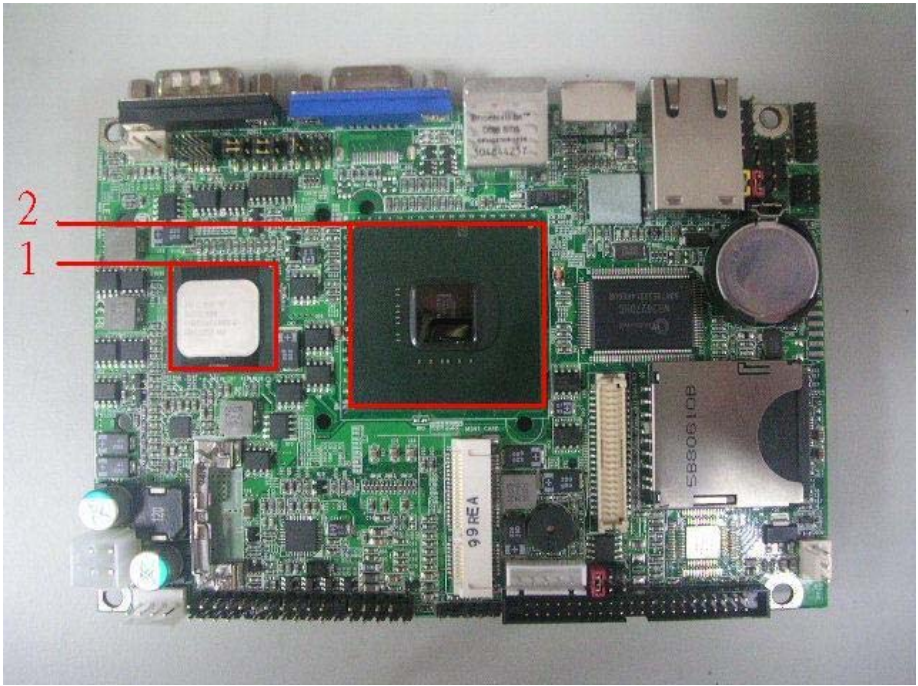
3.2 Thermal measurements at various points on the board

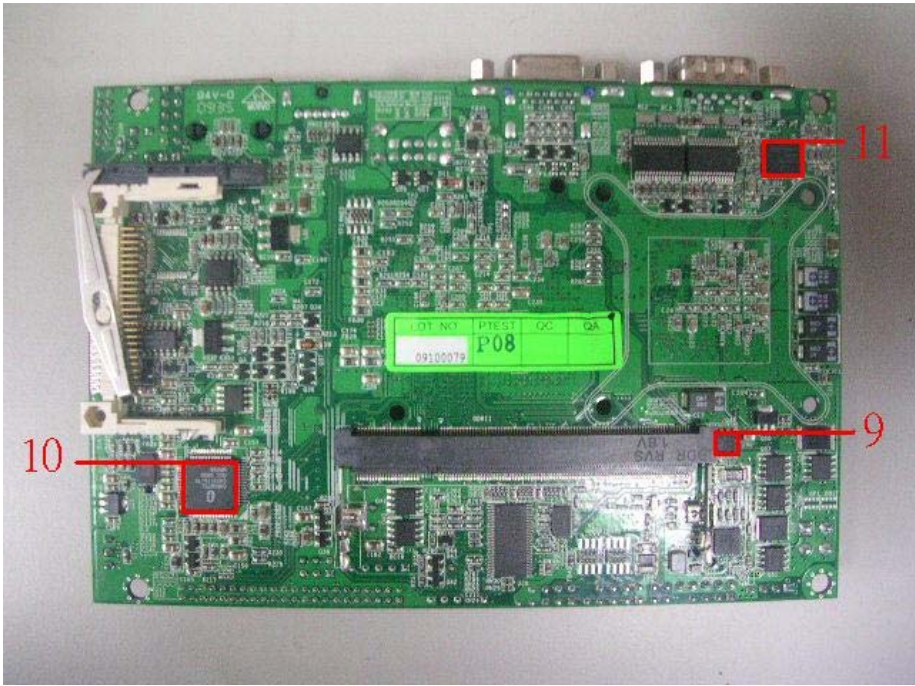
Test Environment :

CPU	Intel® Atom Z510P processor 1.10GHz
Memory	ADATA DDRII 667 1GB (3EG20827)
HDD	Western Digital WD2500JB-00GVC0 250GB
Power	LS 0219B1280(80W)
Operating System	Windows XP
Test Program	Burnin5.3

Test Result:

Item	Environmental temperature	26°C
1	CPU	56.3°C
2	SCH US15WP (Northbridge)	54.8°C
3	Heat Sink	48.9°C
4	LPCIO (W83627DHG)	47.3°C
5	LC3 (D1050KS-120MF)	53.3°C
6	Q2 (L1117L)	55°C
7	U15 (ISL6537)	52.3°C
8	U17 (74F125)	53.8°C
9	Q48 (IRF7413)	49.7°C
10	U24 (CH7317A)	61.7°C
11	U34 (ISL6262A)	46.5°C





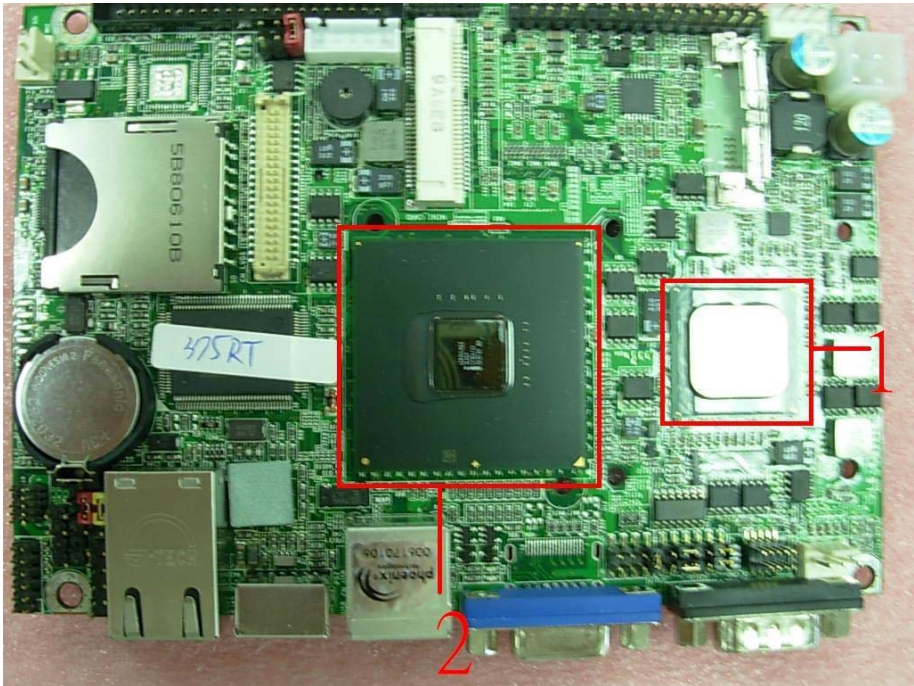
Test Environment :

CPU	Intel® Atom™ Z510PT processor 1.1GHz
Memory	INNODISK DDR2 800 1GB (HY5PS1G1631C)
HDD	Western Digital WD2500JB-00REA0 250GB
Power	LS 0219B1280 (80W)
Operating System	Windows XP
Test Program	Burnin 5.3

Test Result:

Item	Environmental temperature	27.1°C
1	CPU	61.2°C
2	SCH US15WPT (Northbridge)	58.9°C
3	Heat Sink	56.7°C
4	U1 (ICHALC888)	63°C
5	U15 (ISL6537CR)	57.5°C
6	U17 (ITS74F125)	59.6°C
7	U24 (ICH7317A)	64.1°C
8	LC3 (LLC12UH/1050KS)	61.4°C
9	Q2 (TREL1117LG)	59.9°C
10	Q6 (TMSIRF7413Z)	57°C
11	Q16 (TMSIRF7413Z)	61.2°C
12	Q22 (TMSIRF7413Z)	57.9°C

13	Q23 (TMSIRF7413Z)	62°C
14	Q25 (TMSIRF7413Z)	59.9°C
15	Q26 (ICS14435_NL)	59°C
16	Q48 (TMSIRF7413Z)	57.7°C
17	Q53 (TMSFDS5670)	57.5°C



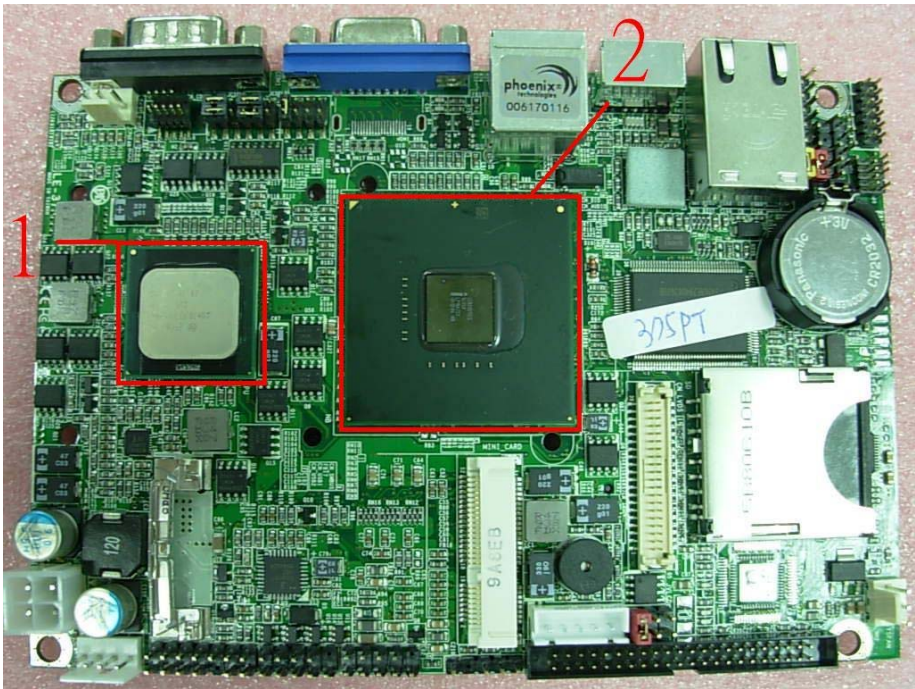
Test Environment :

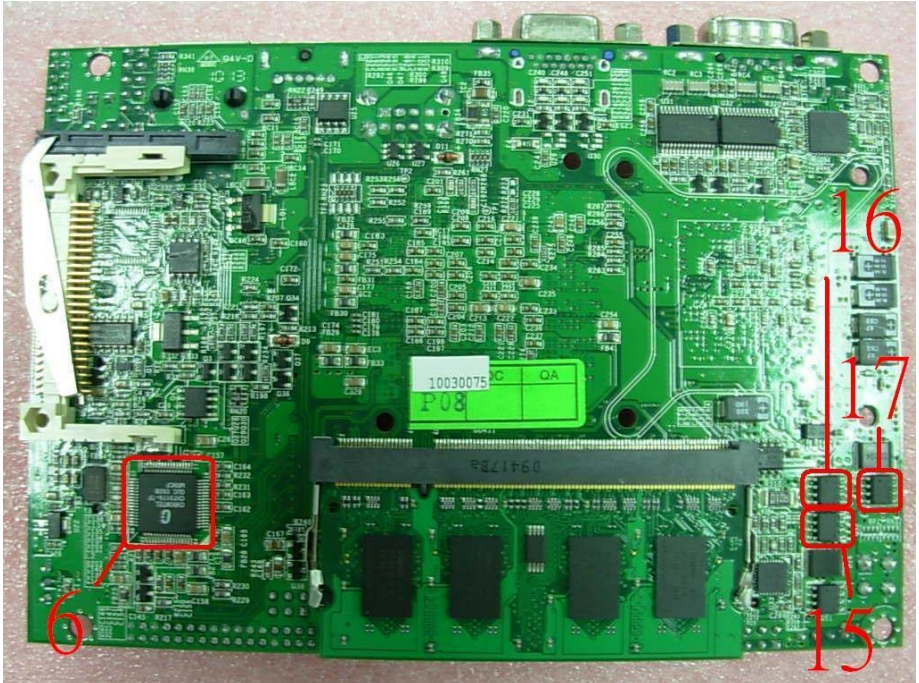
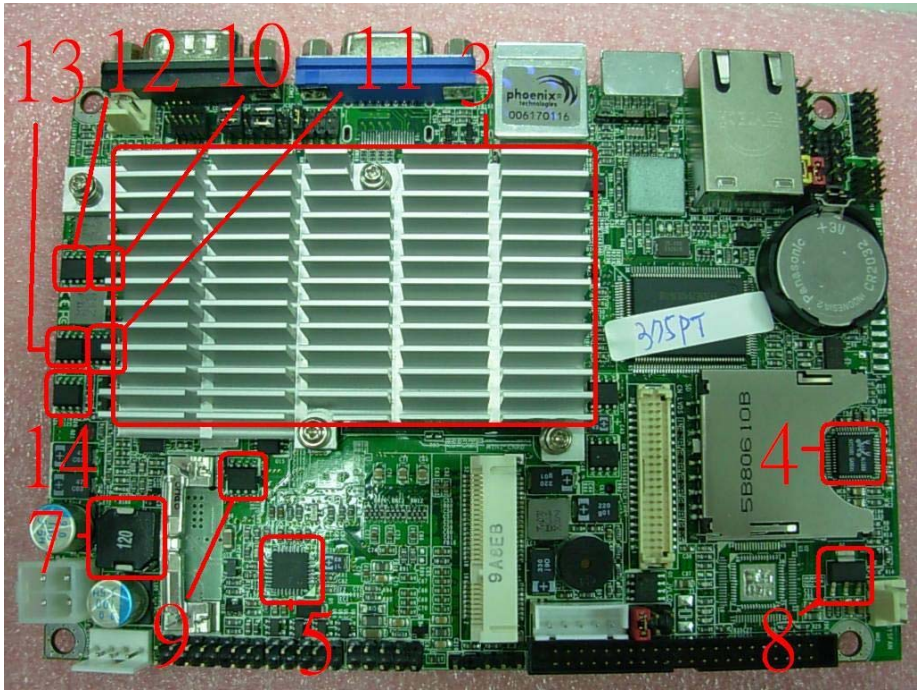
CPU	Intel® Atom™ Z520PT processor 1.33GHz
Memory	INNODISK DDR2 800 1GB (HY5PS1G1631C)
HDD	Western Digital WD2500JB-00REA0 250GB
Power	LS 0219B1280 (80W)
Operating System	Windows XP
Test Program	Burnin 5.3

Test Result:

Item	Environmental temperature	27.1°C
1	CPU	64.4°C
2	SCH US15WPT (Northbridge)	59.6°C
3	Heat Sink	56.6°C
4	U1 (ICHALC888)	63°C
5	U15 (ISL6537CR)	59.4°C
6	U24(ICH7317A)	62.9°C
7	LC3 (LLC12UH/1050KS)	61.8°C
8	Q2 (TREL1117LG)	59.6°C
9	Q16 (TMSIRF7413Z)	60.3°C
10	Q22 (TMSIRF7413Z)	60.5°C
11	Q23 (TMSIRF7413Z)	64.3°C
12	Q24 (TMSIRF7413Z)	59.9°C

13	Q25 (TMSIRF7413Z)	62.5°C
14	Q26 (ICS14435_NL)	60.7°C
15	Q52 (TMSFDS5670)	58°C
16	Q53 (TMSFDS5670)	59°C
17	Q54 (TMSFDS5670)	58.2°C





4. Reliability Test

Power Consumption Test

1. Test Environment:

Motherboard	LE-375QT
CPU	Intel® Atom™ Z510P processor 1.1GHz
Memory	A-DATA DDR2 667 1GB (AD20908A8A-3EG)

Power Supply : LS 0219B1280 (80W)

Voltage	MS-DOS Boot up		Windows XP SP2 Burnin 5.3	
	Current (A)	Power (W)	Current (A)	Power (W)
12V	1.47	17.64	1.27	15.24

Voltage	Windows XP SP2 3DMARK 2003		Windows XP SP2 PRIME 95	
	Current (A)	Power (W)	Current (A)	Power (W)
12V	1.3	15.6	1.35	16.2

1.a Test Environment:

The same as above but with LCD panel

Display Panel	SAMSUNG TM150XH-L01 15" LCD
----------------------	------------------------------------

Power Supply : LS 0219B1280 (80W)

Voltage	MS-DOS Boot up		Windows XP SP2 Burnin 5.3	
	Current (A)	Power (W)	Current (A)	Power (W)
12V	3.14	37.68	3	36

Voltage	Windows XP SP2 3DMARK 2003		Windows XP SP2 PRIME 95	
	Current (A)	Power (W)	Current (A)	Power (W)
12V	3.03	36.36	3.2	38.4

2. Test Environment:

Motherboard	LE-375QT
CPU	Intel® Atom™ Z510P processor 1.1GHz
Memory	A-DATA DDR2 667 1GB (AD20908A8A-3EG)

Power Supply : LS 0227B19120 (120W)

Voltage	MS-DOS Boot up		Windows XP SP2 Burnin 5.3	
	Current (A)	Power (W)	Current (A)	Power (W)
19V	1.04	19.76	0.87	16.53

Voltage	Windows XP SP2 3DMARK 2003		Windows XP SP2 PRIME 95	
	Current (A)	Power (W)	Current (A)	Power (W)
19V	0.86	16.34	0.91	17.29

2.a Test Environment:

The same as above but with LCD panel

Display Panel	SAMSUNG TM150XH-L01 15" LCD
---------------	-----------------------------

Power Supply : LS 0227B19120 (120W)

Voltage	MS-DOS Boot up		Windows XP SP2 Burnin 5.3	
	Current (A)	Power (W)	Current (A)	Power (W)
19V	1.99	37.81	1.99	37.81

Voltage	Windows XP SP2 3DMARK 2003		Windows XP SP2 PRIME 95	
	Current (A)	Power (W)	Current (A)	Power (W)
19V	1.95	37.05	1.88	35.72

3. Test Environment:

Motherboard	LE-375QT
CPU	Intel® Atom™ Z510P processor 1.1GHz
Memory	A-DATA DDR2 667 1GB (AD20908A8A-3EG)

DC Power Supply: GWINSTEK SPS-3610

Voltage	MS-DOS Boot up		Windows XP SP2 Burnin 5.3	
	Current (A)	Power (W)	Current (A)	Power (W)
9V	2.03	18.27	1.9	17.1
24V	0.79	18.96	0.69	16.56

Voltage	Windows XP SP2 3DMARK 2003		Windows XP SP2 PRIME 95	
	Current (A)	Power (W)	Current (A)	Power (W)
9V	1.9	17.1	1.96	17.64
24V	0.72	17.28	0.7	16.8

3.a Test Environment:

The same as above but with LCD panel

Display Panel	SAMSUNG TM150XH-L01 15" LCD
---------------	-----------------------------

DC Power Supply: GWINSTEK SPS-3610

Voltage	MS-DOS Boot up		Windows XP SP2 Burnin 5.3	
	Current (A)	Power (W)	Current (A)	Power (W)
9V	4.37	39.33	4.23	38.07
24V	1.58	37.92	1.54	36.96

Voltage	Windows XP SP2 3DMARK 2003		Windows XP SP2 PRIME 95	
	Current (A)	Power (W)	Current (A)	Power (W)
9V	4.36	39.24	4.17	37.53
24V	1.58	37.92	1.51	36.24

4. Test Environment:

Motherboard	LE-375QT
CPU	Intel® Atom™ Z510P processor 1.1GHz
Memory	PQI DDR2 800 1GB (HY5PS1G831C)

Power Supply : LS 0219B1280 (80W)

Voltage	MS-DOS Boot up		Windows XP SP2 Burnin 5.3	
	Current (A)	Power (W)	Current (A)	Power (W)
12V	1.48	17.76	1.29	15.48

Voltage	Windows XP SP2 3DMARK 2003		Windows XP SP2 PRIME 95	
	Current (A)	Power (W)	Current (A)	Power (W)
12V	1.28	15.36	1.34	16.08

4.a Test Environment:

The same as above but with LCD panel

Display Panel	SAMSUNG TM150XH-L01 15" LCD
----------------------	------------------------------------

Power Supply : LS 0219B1280 (80W)

Voltage	MS-DOS Boot up		Windows XP SP2 Burnin 5.3	
	Current (A)	Power (W)	Current (A)	Power (W)
12V	3.1	37.2	3	36

Voltage	Windows XP SP2 3DMARK 2003		Windows XP SP2 PRIME 95	
	Current (A)	Power (W)	Current (A)	Power (W)
12V	3.03	36.36	3.2	38.4

5. Test Environment:

Motherboard	LE-375QT
CPU	Intel® Atom™ Z510P processor 1.1GHz
Memory	PQI DDR2 800 1GB (HY5PS1G831C)

Power Supply : LS 0227B19120 (120W)

Voltage	MS-DOS Boot up		Windows XP SP2 Burnin 5.3	
	Current (A)	Power (W)	Current (A)	Power (W)
19V	0.97	18.43	0.86	16.34

Voltage	Windows XP SP2 3DMARK 2003		Windows XP SP2 PRIME 95	
	Current (A)	Power (W)	Current (A)	Power (W)
19V	0.87	16.53	0.85	16.15

5.a Test Environment:

The same as above but with LCD panel

Display Panel	SAMSUNG TM150XH-L01 15" LCD
---------------	-----------------------------

Power Supply : LS 0227B19120 (120W)

Voltage	MS-DOS Boot up		Windows XP SP2 Burnin 5.3	
	Current (A)	Power (W)	Current (A)	Power (W)
19V	1.97	37.13	1.9	36.1

Voltage	Windows XP SP2 3DMARK 2003		Windows XP SP2 PRIME 95	
	Current (A)	Power (W)	Current (A)	Power (W)
19V	1.95	37.05	1.9	36.1

6. Test Environment:

Motherboard	LE-375QT
CPU	Intel® Atom™ Z510P processor 1.1GHz
Memory	PQI DDR2 800 1GB (HY5PS1G831C)

DC Power Supply: GWINSTEK SPS-3610

Voltage	MS-DOS Boot up		Windows XP SP2 Burnin 5.3	
	Current (A)	Power (W)	Current (A)	Power (W)
9V	2.08	18.72	1.88	16.92
24V	0.76	18.24	0.73	17.52

Voltage	Windows XP SP2 3DMARK 2003		Windows XP SP2 PRIME 95	
	Current (A)	Power (W)	Current (A)	Power (W)
9V	1.9	17.1	1.95	17.55
24V	0.73	17.52	0.71	17.04

6.a Test Environment:

The same as above but with LCD panel

Display Panel	SAMSUNG TM150XH-L01 15" LCD
---------------	-----------------------------

DC Power Supply: GWINSTEK SPS-3610

Voltage	MS-DOS Boot up		Windows XP SP2 Burnin 5.3	
	Current (A)	Power (W)	Current (A)	Power (W)
9V	4.38	39.42	4.24	38.16
24V	1.55	37.2	1.52	36.48

Voltage	Windows XP SP2 3DMARK 2003		Windows XP SP2 PRIME 95	
	Current (A)	Power (W)	Current (A)	Power (W)
9V	4.29	38.61	4.16	37.44
24V	1.53	36.72	1.51	36.24

7. Test Environment:

Motherboard	LE-375RT
CPU	Intel® Atom™ Z510PT processor 1.1GHz
Memory	INNODISK DDR2 800 1GB (HY5PS1G1631C)

Power Supply : LS 0219B1280 (80W)

Voltage	MS-DOS Boot up		Windows XP SP2 Burnin 5.3	
	Current (A)	Power (W)	Current (A)	Power (W)
12V	2.14	25.68	1.46	17.52

Voltage	Windows XP SP2 3DMARK 2003		Windows XP SP2 PRIME 95	
	Current (A)	Power (W)	Current (A)	Power (W)
12V	1.49	17.88	1.54	18.48

7.a Test Environment:

The same as above but with LCD panel

Display Panel	SAMSUNG TM150XH-L01 15" LCD
---------------	-----------------------------

Power Supply : LS 0219B1280 (80W)

Voltage	MS-DOS Boot up		Windows XP SP2 Burnin 5.3	
	Current (A)	Power (W)	Current (A)	Power (W)
12V	3.28	39.36	3.13	37.56

Voltage	Windows XP SP2 3DMARK 2003		Windows XP SP2 PRIME 95	
	Current (A)	Power (W)	Current (A)	Power (W)
12V	3.31	39.72	3.24	38.88

8. Test Environment:

Motherboard	LE-375RT
CPU	Intel® Atom™ Z510PT processor 1.1GHz
Memory	INNODISK DDR2 800 1GB (HY5PS1G1631C)

Power Supply : LS 0227B19120 (120W)

Voltage	MS-DOS Boot up		Windows XP SP2 Burnin 5.3	
	Current (A)	Power (W)	Current (A)	Power (W)
19V	1.34	25.46	0.94	17.86

Voltage	Windows XP SP2 3DMARK 2003		Windows XP SP2 PRIME 95	
	Current (A)	Power (W)	Current (A)	Power (W)
19V	0.99	18.81	1	19

8.a Test Environment:

The same as above but with LCD panel

Display Panel	SAMSUNG TM150XH-L01 15" LCD
----------------------	------------------------------------

Power Supply : LS 0227B19120 (120W)

Voltage	MS-DOS Boot up		Windows XP SP2 Burnin 5.3	
	Current (A)	Power (W)	Current (A)	Power (W)
19V	2.08	24.96	1.97	23.64

Voltage	Windows XP SP2 3DMARK 2003		Windows XP SP2 PRIME 95	
	Current (A)	Power (W)	Current (A)	Power (W)
19V	2.1	25.2	2.04	24.48

9. Test Environment:

Motherboard	LE-375RT
CPU	Intel® Atom™ Z510PT processor 1.1GHz
Memory	INNODISK DDR2 800 1GB (HY5PS1G1631C)

DC Power Supply: GWINSTEK SPS-3610

Voltage	MS-DOS Boot up		Windows XP SP2 Burnin 5.3	
	Current (A)	Power (W)	Current (A)	Power (W)
9V	3.07	27.63	2.07	18.63
24V	1.1	26.4	0.78	18.72

Voltage	Windows XP SP2 3DMARK 2003		Windows XP SP2 PRIME 95	
	Current (A)	Power (W)	Current (A)	Power (W)
9V	2.18	19.62	2.2	19.8
24V	0.99	23.76	0.9	21.6

9.a Test Environment:

The same as above but with LCD panel

Display Panel	SAMSUNG TM150XH-L01 15" LCD
---------------	-----------------------------

DC Power Supply: GWINSTEK SPS-3610

Voltage	MS-DOS Boot up		Windows XP SP2 Burnin 5.3	
	Current (A)	Power (W)	Current (A)	Power (W)
9V	4.52	40.68	4.29	38.61
24V	1.67	40.08	1.6	38.4

Voltage	Windows XP SP2 3DMARK 2003		Windows XP SP2 PRIME 95	
	Current (A)	Power (W)	Current (A)	Power (W)
9V	4.51	40.59	4.33	38.97
24V	1.64	39.36	1.68	40.32

10. Test Environment:

Motherboard	LE-375PT
CPU	Intel® Atom™ Z520PT processor 1.33GHz
Memory	INNODISK DDR2 800 1GB (HY5PS1G1631C)

Power Supply : LS 0219B1280 (80W)

Voltage	MS-DOS Boot up		Windows XP SP2 Burnin 5.3	
	Current (A)	Power (W)	Current (A)	Power (W)
12V	2.18	26.16	1.48	17.76

Voltage	Windows XP SP2 3DMARK 2003		Windows XP SP2 PRIME 95	
	Current (A)	Power (W)	Current (A)	Power (W)
12V	1.54	18.48	1.53	18.36

10.a Test Environment:

The same as above but with LCD panel

Display Panel	SAMSUNG TM150XH-L01 15" LCD
---------------	-----------------------------

Power Supply : LS 0219B1280 (80W)

Voltage	MS-DOS Boot up		Windows XP SP2 Burnin 5.3	
	Current (A)	Power (W)	Current (A)	Power (W)
12V	3.26	39.12	3.18	38.16

Voltage	Windows XP SP2 3DMARK 2003		Windows XP SP2 PRIME 95	
	Current (A)	Power (W)	Current (A)	Power (W)
12V	3.27	39.24	3.14	37.68

11. Test Environment:

Motherboard	LE-375PT
CPU	Intel® Atom™ Z520PT processor 1.33GHz
Memory	INNODISK DDR2 800 1GB (HY5PS1G1631C)

Power Supply : LS 0227B19120 (120W)

Voltage	MS-DOS Boot up		Windows XP SP2 Burnin 5.3	
	Current (A)	Power (W)	Current (A)	Power (W)
19V	1.4	26.6	1	19

Voltage	Windows XP SP2 3DMARK 2003		Windows XP SP2 PRIME 95	
	Current (A)	Power (W)	Current (A)	Power (W)
19V	1.01	19.19	0.99	18.81

11.a Test Environment:

The same as above but with LCD panel

Display Panel	SAMSUNG TM150XH-L01 15" LCD
----------------------	------------------------------------

Power Supply : LS 0227B19120 (120W)

Voltage	MS-DOS Boot up		Windows XP SP2 Burnin 5.3	
	Current (A)	Power (W)	Current (A)	Power (W)
19V	2.07	39.33	2.06	24.72

Voltage	Windows XP SP2 3DMARK 2003		Windows XP SP2 PRIME 95	
	Current (A)	Power (W)	Current (A)	Power (W)
19V	2.07	39.33	2.04	38.76

12. Test Environment:

Motherboard	LE-375PT
CPU	Intel® Atom™ Z520PT processor 1.33GHz
Memory	INNODISK DDR2 800 1GB (HY5PS1G1631C)

DC Power Supply: GWINSTEK SPS-3610

Voltage	MS-DOS Boot up		Windows XP SP2 Burnin 5.3	
	Current (A)	Power (W)	Current (A)	Power (W)
9V	3.1	27.9	2.04	18.36
24V	1.11	26.64	0.81	19.44

Voltage	Windows XP SP2 3DMARK 2003		Windows XP SP2 PRIME 95	
	Current (A)	Power (W)	Current (A)	Power (W)
9V	2.17	19.53	2.13	19.17
24V	0.81	19.44	0.75	18

12.a Test Environment:

The same as above but with LCD panel

Display Panel	SAMSUNG TM150XH-L01 15" LCD
---------------	-----------------------------

DC Power Supply: GWINSTEK SPS-3610

Voltage	MS-DOS Boot up		Windows XP SP2 Burnin 5.3	
	Current (A)	Power (W)	Current (A)	Power (W)
9V	4.5	40.5	4.33	38.97
24V	1.64	39.36	1.58	37.92

Voltage	Windows XP SP2 3DMARK 2003		Windows XP SP2 PRIME 95	
	Current (A)	Power (W)	Current (A)	Power (W)
9V	4.5	40.5	4.46	40.14
24V	1.61	38.64	1.57	37.68

5. Performance Test

5.1 Business Win Stone 2002

Windows XP SP2

Weighted Suite	Test Environment	Result	Remark
Business Win stone2002	Intel® Atom Z510P processor PQI DDRII 667 2GB (7QE22D9HNL) Western Digital WD2500JB	PASS	17.4 16 15.9 17.6
Business Win stone2002	Intel® Atom Z510P processor Transcend DDRII 667 2GB (E1108ACBG) Western Digital WD2500JB	PASS	17.3 17.3 17.3 17.2
Business Win stone2002	Intel® Atom Z510P processor Kingston DDRII 533 1GB (D6408TEBGWL37) Western Digital WD2500JB	PASS	15.3 16.2 16.4 16.5

5.2 Business Win Stone 2004

Windows XP SP2

Weighted Suite	Test Environment	Result	Remark
Business Win stone2004	Intel® Atom Z510P processor PQI DDRII 667 2GB (7QE22D9HNL) Western Digital WD2500JB	PASS	8.1 9.6 8.9 9.9

Business Win stone2004	Intel® Atom Z510P processor Transcend DDRII 667 2GB (E1108ACBG) Western Digital WD2500JB	PASS	9.4 9.8 8.9 7.7
Business Win stone2004	Intel® Atom Z510P processor Kingston DDRII 533 1GB (D6408TEBGWL37) Western Digital WD2500JB	PASS	8.2 7.9 9.2 9
Business Win stone2004	Intel® Atom™ Z510PT processor 1.1GHz INNODISK DDR2 667 512MB (HY5PS1G1631G) Western Digital WD2500JB-00REA0 250GB	PASS	8.3 8.6 8.6 8.6
Business Win stone2004	Intel® Atom™ Z510PT processor 1.1GHz INNODISK DDR2 800 1GB (HY5PS1G1631C) Western Digital WD2500JB-00REA0 250GB	PASS	9.1 8.9 9 8.9
Business Win stone2004	Intel® Atom™ Z520PT processor 1.33GHz INNODISK DDR2 667 512MB (HY5PS1G1631G) Western Digital WD2500JB-00REA0 250GB	PASS	10.4 10.3 10.1 10.3
Business Win stone2004	Intel® Atom™ Z520PT processor 1.33GHz	PASS	10.1 10.7

	INNODISK DDR2 800 1GB (HY5PS1G1631C) Western Digital WD2500JB-00REA0 250GB		10.7 10.6
--	---	--	--------------

5.3 Content Creation Winstone 2001

Windows XP SP2

Weighted Suite	Test Environment	Result	Remark
Content Creation Winstone 2001	Intel® Atom Z510P processor PQI DDRII 667 2GB (7QE22D9HNL) Western Digital WD2500JB	PASS	43.2 44 43.6 44.2 44
Content Creation Winstone 2001	Intel® Atom Z510P processor Transcend DDRII 667 2GB (E1108ACBG) Western Digital WD2500JB	PASS	43.4 43.2 43.3 43.8 43.6
Content Creation Winstone 2001	Intel® Atom Z510P processor Kingston DDRII 533 1GB (D6408TEBGWL37) Western Digital WD2500JB	PASS	44.1 43.6 43.9 44 44

5.4 Content Creation Winstone 2004

Windows XP SP2

Weighted Suite	Test Environment	Result	Remark
Content Creation Winstone 2004	Intel® Atom Z510P processor PQI DDRII 667 2GB (7QE22D9HNL) Western Digital WD2500JB	PASS	9.8
			9.8
			9.8
			9.8
Content Creation Winstone 2004	Intel® Atom Z510P processor Transcend DDRII 667 2GB (E1108ACBG) Western Digital WD2500JB	PASS	9.8
			9.6
			9.8
			9.7
Content Creation Winstone 2004	Intel® Atom Z510P processor Kingston DDRII 533 1GB (D6408TEBGWL37) Western Digital WD2500JB	PASS	9.2
			9.6
			9.6
			9.7
Content Creation Winstone 2004	Intel® Atom™ Z510PT processor 1.1GHz INNODISK DDR2 667 512MB (HY5PS1G1631G) Western Digital WD2500JB-00REA0 250GB	PASS	9.4
			9.4
			9.4
			9.3
Content Creation Winstone 2004	Intel® Atom™ Z510PT processor 1.1GHz INNODISK DDR2 800 1GB (HY5PS1G1631C) Western Digital	PASS	9.4
			9.6
			9.6
			9.6

	WD2500JB-00REA0 250GB		
Content Creation Winstone 2004	Intel® Atom™ Z520PT processor 1.33GHz INNODISK DDR2 667 512MB (HY5PS1G1631G) Western Digital WD2500JB-00REA0 250GB	PASS	11.3 11.3 11.3 11.3
Content Creation Winstone 2004	Intel® Atom™ Z520PT processor 1.33GHz INNODISK DDR2 800 1GB (HY5PS1G1631C) Western Digital WD2500JB-00REA0 250GB	PASS	11.6 11.6 11.6 11.6

5.5 3D MARK(2001、2003、2005)

Windows XP SP2

Weighted Suite	Test Environment	Result	Remark
3DMARK2001 Scores	Intel® Atom Z510P processor PQI DDRII 667 2GB (7QE22D9HNL) Western Digital WD2500JB	PASS	1347
3DMARK2003 Scores		PASS	408
3DMARK2005 Scores		PASS	102

Windows XP SP2

Weighted Suite	Test Environment	Result	Remark
3DMARK2001 Scores	Intel® Atom Z510P processor Transcend DDRII 667 2GB (E1108ACBG) Western Digital WD2500JB	PASS	1339
3DMARK2003 Scores		PASS	406
3DMARK2005 Scores		PASS	101

Windows XP SP2

Weighted Suite	Test Environment	Result	Remark
3DMARK2001 Scores	Intel® Atom Z510P processor Kingston DDRII 533 1GB (D6408TEBGWL37) Western Digital WD2500JB	PASS	1345
3DMARK2003 Scores		PASS	405
3DMARK2005 Scores		PASS	100

Windows XP SP2

Weighted Suite	Test Environment	Result	Remark
3DMARK2001 Scores	Intel® Atom™ Z510PT processor 1.1GHz INNODISK DDR2 800 1GB (HY5PS1G1631C) Western Digital WD2500JB-00REA0 250GB	PASS	876
3DMARK2003 Scores		PASS	397
3DMARK2005 Scores		PASS	153

Windows XP SP2

Weighted Suite	Test Environment	Result	Remark
3DMARK2001 Scores	Intel® Atom™ Z510PT processor 1.1GHz INNODISK DDR2 667 512MB (HY5PS1G1631G) Western Digital WD2500JB-00REA0 250GB	PASS	879
3DMARK2003 Scores		FAILED	N/A
3DMARK2005 Scores		FAILED	N/A

Windows XP SP2

Weighted Suite	Test Environment	Result	Remark
3DMARK2001 Scores	Intel® Atom™ Z520PT processor 1.33GHz INNODISK DDR2 800 1GB (HY5PS1G1631C) Western Digital WD2500JB-00REA0 250GB	PASS	976
3DMARK2003 Scores		PASS	424
3DMARK2005 Scores		PASS	158

Windows XP SP2

Weighted Suite	Test Environment	Result	Remark
3DMARK2001 Scores	Intel® Atom™ Z520PT processor 1.33GHz INNODISK DDR2 667 512MB (HY5PS1G1631G) Western Digital WD2500JB-00REA0 250GB	PASS	958
3DMARK2003 Scores		FAILED	N/A
3DMARK2005 Scores		FAILED	N/A

5.6 3D MARK2006

Windows XP SP2

Item	Weighted Suite	Test Environment	Result	Remark
1	3DMARK Source	Intel® Atom Z510P processor 1.1GHz PQI DDRII 667 2GB (7QE22D9HNL) Western Digital WD2500JB-00REA0 250GB	PASS	66
2	SM2.0 Source		PASS	30
3	HDR/SM3.0 Source		PASS	N/A
4	CPU Source		PASS	339

Windows XP SP2

Item	Weighted Suite	Test Environment	Result	Remark
1	3DMARK Source	Intel® Atom Z510P processor 1.1GHz Transcend DDRII 667 2GB (E1108ACBG) Western Digital WD2500JB-00REA0 250GB	PASS	66
2	SM2.0 Source		PASS	30
3	HDR/SM3.0 Source		PASS	N/A
4	CPU Source		PASS	338

Windows XP SP2

Item	Weighted Suite	Test Environment	Result	Remark
1	3DMARK Source	Intel® Atom Z510P processor 1.1GHz Kingston DDRII 533 1GB (D6408TEBGWL37) Western Digital WD2500JB-00REA0 250GB	PASS	66
2	SM2.0 Source		PASS	30
3	HDR/SM3.0 Source		PASS	N/A
4	CPU Source		PASS	339

Windows XP SP2

Item	Weighted Suite	Test Environment	Result	Remark
1	3DMARK Scores	Intel® Atom™ Z510PT processor 1.1GHz INNODISK DDR2 800 1GB (HY5PS1G1631C) Western Digital WD2500JB-00REA0 250GB	PASS	50
2	SM2.0 Scores		PASS	23
3	HDR/SM3.0 Scores		NO SUPPLY	N/A
4	CPU Scores		PASS	335

Windows XP SP2

Item	Weighted Suite	Test Environment	Result	Remark
1	3DMARK Scores	Intel® Atom™ Z520PT processor 1.33GHz INNODISK DDR2 800 1GB (HY5PS1G1631C) Western Digital WD2500JB-00REA0 250GB	PASS	55
2	SM2.0 Scores		PASS	25
3	HDR/SM3.0 Scores		NO SUPPLY	N/A
4	CPU Scores		PASS	407

5.7 PC MARK2002

Test Environment
Intel® Atom Z510P processor 1.1GHz PQI DDRII 667 2GB (7QE22D9HNL) Western Digital WD2500JB-00REA0 250GB

Windows XP SP2

Item	Weighted Suite	Result	Remark
1	CPU test Source	PASS	1811
2	Memory test Source	PASS	4166
3	HDD test Source	PASS	745

Test Environment
Intel® Atom Z510P processor 1.1GHz Transcend DDRII 667 2GB (E1108ACBG) Western Digital WD2500JB-00REA0 250GB

Windows XP SP2

Item	Weighted Suite	Result	Remark
1	CPU test Source	PASS	1780
2	Memory test Source	PASS	4079
3	HDD test Source	PASS	744

Test Environment
Intel® Atom Z510P processor 1.1GHz Kingston DDRII 533 1GB (D6408TEBGWL37) Western Digital WD2500JB-00REA0 250GB

Windows XP SP2

Item	Weighted Suite	Result	Remark
1	CPU test Source	PASS	1787
2	Memory test Source	PASS	4145
3	HDD test Source	PASS	748

Test Environment
Intel® Atom™ Z510PT processor 1.1GHz INNODISK DDR2 800 1GB (HY5PS1G1631C) Western Digital WD2500JB-00REA0 250GB

Windows XP SP2

Item	Weighted Suite	Result	Remark
1	CPU test Scores	PASS	1811
2	Memory test Scores	PASS	4223
3	HDD test Scores	PASS	759

Test Environment
Intel® Atom™ Z510PT processor 1.1GHz INNODISK DDR2 667 512MB (HY5PS1G1631G) Western Digital WD2500JB-00REA0 250GB

Windows XP SP2

Item	Weighted Suite	Result	Remark
1	CPU test Scores	PASS	1822
2	Memory test Scores	PASS	4384
3	HDD test Scores	PASS	758

Test Environment
Intel® Atom™ Z520PT processor 1.33GHz INNODISK DDR2 800 1GB (HY5PS1G1631C) Western Digital WD2500JB-00REA0 250GB

Windows XP SP2

Item	Weighted Suite	Result	Remark
1	CPU test Scores	PASS	2211
2	Memory test Scores	PASS	5170
3	HDD test Scores	PASS	773

Test Environment
Intel® Atom™ Z520PT processor 1.33GHz INNODISK DDR2 667 512MB(HY5PS1G1631G) Western Digital WD2500JB-00REA0 250GB

Windows XP SP2

Item	Weighted Suite	Result	Remark
1	CPU test Scores	PASS	2209
2	Memory test Scores	PASS	5337
3	HDD test Scores	PASS	778

5.8 PC MARK2004

Test Environment
Intel® Atom Z510P processor 1.1GHz PQI DDRII 667 2GB (7QE22D9HNL) Western Digital WD2500JB-00REA0 250GB

Windows XP PS2

Item	Weighted Suite	Result	Remark
1	PCMark Scores	PASS	1384
2	CPU test Scores	PASS	1458
3	Memory test Scores	PASS	2066
4	Graphic test Scores	PASS	414
5	HDD test Scores	PASS	3701

Test Environment
Intel® Atom Z510P processor 1.1GHz Transcend DDRII 667 2GB (E1108ACBG) Western Digital WD2500JB-00REA0 250GB

Windows XP PS2

Item	Weighted Suite	Result	Remark
1	PCMark Scores	PASS	1386
2	CPU test Scores	PASS	1453
3	Memory test Scores	PASS	2049
4	Graphic test Scores	PASS	414
5	HDD test Scores	PASS	3704

Test Environment
Intel® Atom Z510P processor 1.1GHz Kingston DDRII 533 1GB (D6408TEBGWL37) Western Digital WD2500JB-00REA0 250GB

Windows XP PS2

Item	Weighted Suite	Result	Remark
1	PCMark Scores	PASS	1385
2	CPU test Scores	PASS	1460
3	Memory test Scores	PASS	2089
4	Graphic test Scores	PASS	413
5	HDD test Scores	PASS	3703

Test Environment

**Intel® Atom™ Z510PT processor 1.1GHz
INNODISK DDR2 800 1GB (HY5PS1G1631C)
Western Digital WD2500JB-00REA0 250GB**

Windows XP PS2

Item	Weighted Suite	Result	Remark
1	PCMark Scores	PASS	1311
2	CPU test Scores	PASS	1457
3	Memory test Scores	PASS	2128
4	Graphic test Scores	PASS	216
5	HDD test Scores	PASS	3706

Test Environment

**Intel® Atom™ Z510PT processor 1.1GHz
INNODISK DDR2 667 512MB (HY5PS1G1631G)
Western Digital WD2500JB-00REA0 250GB**

Windows XP PS2

Item	Weighted Suite	Result	Remark
1	PCMark Scores	PASS	1311
2	CPU test Scores	PASS	1455
3	Memory test Scores	PASS	2134
4	Graphic test Scores	PASS	213
5	HDD test Scores	PASS	3694

Test Environment

**Intel® Atom™ Z520PT processor 1.33GHz
INNODISK DDR2 800 1GB (HY5PS1G1631C)
Western Digital WD2500JB-00REA0 250GB**

Windows XP PS2

Item	Weighted Suite	Result	Remark
1	PCMark Scores	PASS	1589
2	CPU test Scores	PASS	1749
3	Memory test Scores	PASS	2626
4	Graphic test Scores	PASS	243
5	HDD test Scores	PASS	3803

Test Environment

**Intel® Atom™ Z520PT processor 1.33GHz
INNODISK DDR2 667 512MB(HY5PS1G1631G)
Western Digital WD2500JB-00REA0 250GB**

Windows XP PS2

Item	Weighted Suite	Result	Remark
1	PCMark Scores	PASS	1521
2	CPU test Scores	PASS	1744
3	Memory test Scores	PASS	2582
4	Graphic test Scores	PASS	243
5	HDD test Scores	PASS	3780

5.9 PC MARK2005

Test Environment
Intel® Atom Z510P processor 1.1GHz PQI DDRII 667 2GB (7QE22D9HNL) Western Digital WD2500JB-00REA0 250GB

Windows XP SP2

Item	Weighted Suite	Result	Remark
1	System test Scores	PASS	974
2	CPU test Scores	PASS	1030
3	Memory test Scores	PASS	1679
4	Graphic test Scores	PASS	280
5	HDD test Scores	PASS	3108

Test Environment
Intel® Atom Z510P processor 1.1GHz Transcend DDRII 667 2GB (E1108ACBG) Western Digital WD2500JB-00REA0 250GB

Windows XP SP2

Item	Weighted Suite	Result	Remark
1	System test Scores	PASS	962
2	CPU test Scores	PASS	1029
3	Memory test Scores	PASS	1659
4	Graphic test Scores	PASS	277
5	HDD test Scores	PASS	3110

Test Environment
Intel® Atom Z510P processor 1.1GHz Kingston DDRII 533 1GB (D6408TEBGWL37) Western Digital WD2500JB-00REA0 250GB

Windows XP SP2

Item	Weighted Suite	Result	Remark
1	System test Scores	PASS	977
2	CPU test Scores	PASS	1030
3	Memory test Scores	PASS	1676
4	Graphic test Scores	PASS	380
5	HDD test Scores	PASS	3127

Test Environment
Intel® Atom™ Z510PT processor 1.1GHz INNODISK DDR2 800 1GB (HY5PS1G1631C) Western Digital WD2500JB-00REA0 250GB

Windows XP SP2

Item	Weighted Suite	Result	Remark
1	System test Scores	PASS	971
2	CPU test Scores	PASS	1031
3	Memory test Scores	PASS	1687
4	Graphic test Scores	PASS	260
5	HDD test Scores	PASS	3196

Test Environment

**Intel® Atom™ Z510PT processor 1.1GHz
INNODISK DDR2 667 512MB (HY5PS1G1631G)
Western Digital WD2500JB-00REA0 250GB**

Windows XP SP2

Item	Weighted Suite	Result	Remark
1	System test Scores	PASS	984
2	CPU test Scores	PASS	1031
3	Memory test Scores	PASS	1699
4	Graphic test Scores	PASS	260
5	HDD test Scores	PASS	3195

Test Environment

**Intel® Atom™ Z520PT processor 1.33GHz
INNODISK DDR2 800 1GB (HY5PS1G1631C)
Western Digital WD2500JB-00REA0 250GB**

Windows XP SP2

Item	Weighted Suite	Result	Remark
1	System test Scores	PASS	1130
2	CPU test Scores	PASS	1251
3	Memory test Scores	PASS	2064
4	Graphic test Scores	PASS	287
5	HDD test Scores	PASS	3238

Test Environment

**Intel® Atom™ Z520PT processor 1.33GHz
INNODISK DDR2 667 512MB(HY5PS1G1631G)
Western Digital WD2500JB-00REA0 250GB**

Windows XP SP2

Item	Weighted Suite	Result	Remark
1	System test Scores	PASS	1122
2	CPU test Scores	PASS	1249
3	Memory test Scores	PASS	2064
4	Graphic test Scores	PASS	284
5	HDD test Scores	PASS	3204

5.10 Storage Performance

5.10.1 HDD

Test environment:

OS Windows XP professional SP2

Program (HD Tune)

HDD Model	Interface	capacity	Average	Burst Rate	Access time
Western Digital WD2500JB -00REA0	IDE	250GB	27.6 MB/sec	27.4 MB/sec	13.5ms
Seagate ST940815A	IDE	40GB	28.3 MB/sec	27.3 MB/sec	16.0ms
Western Digital WD2500JB -00GVC0	IDE	250GB	28.4 MB/sec	26.5 MB/sec	13.4ms
Seagate ST320413A	IDE	20GB	22.2 MB/sec	25.9 MB/sec	18.6ms
Seagate ST33221A	IDE	3GB	7.6 MB/sec	22.7 MB/sec	17.0ms

HITACHI IC25N040AT MR04-0	IDE	40GB	20.7 MB/sec	28.0 MB/sec	18.3ms
TOSHIBA MK4032GAX	IDE	40GB	24.0 MB/sec	26.5 MB/sec	16.8ms
Western Digital WD2500JB -00GVC0	USB	640GB	22.0 MB/sec	18.4 MB/sec	15.2ms
SI-7908US+ WD10EADS	USB	1TB	25.5 MB/sec	19.4 MB/sec	14.4ms

5.10.2 CD-ROM

Test environment:

OS Windows XP professional SP2

Program (NERO)

CD-ROM Model	Interface	Average speed	Full READ	Burst Rate	CD
ASUS CD-S520	IDE	13.53 x	210ms	2 MB/s	52 X CD-R
PIONEER DVD-127D	IDE	29.71 x	159ms	22 MB/s	52 X CD-R
LITEON DVD SOSC-2485KX	USB	17.48x	216ms	18 MB/s	52X CD-R
LITEON DVD SOSW-833XS	USB	11.59x	336ms	18 MB/s	52X CD-R