

# **KX600A Series**

## **Copyright**

All rights are reserved. No part of this publication may be reproduced, transmitted, transcribed, stored in a retrieval system or translated into any language or computer language, in any form or by any means, electronic, mechanical, magnetic, optical, chemical, manual or otherwise, without the prior written permission of the company. Brands and product names are trademarks or registered trademarks of their respective companies.

The vendor makes no representations or warranties with respect to the contents herein and especially disclaim any implied warranties of merchantability or fitness for any purpose. Further the vendor reserves the right to revise this publication and to make changes to the contents herein without obligation to notify any party beforehand. Duplication of this publication, in part or in whole, is not allowed without first obtaining the vendor's approval in writing.

## **Trademark**

All the trademarks or brands in this document are registered by their respective owner.

## **Disclaimer**

We make no warranty of any kind with regard to the content of this user's manual. The content is subject to change without notice and we will not be responsible for any mistakes found in this user's manual. All the brand and product names are trademarks of their respective companies.

## **FCC Compliance Statement**

This equipment has been tested and found to comply with the limits of a Class B digital device, pursuant to Part 15 of the FCC Rules. These limits are designed to provide reasonable protection against harmful interference in a residential installation. This equipment generates, uses and can radiate radio frequency energy and, if not installed and used in accordance with the instructions, may cause harmful interference to radio communications. Operation of this equipment in a residential area is likely to cause harmful interference in which case the user will be required to correct the interference at his own expense. However, there is no guarantee that interference will not occur in a particular installation.

## **CE Mark**

The device is in accordance with 89/336 ECC-ENC Directive.

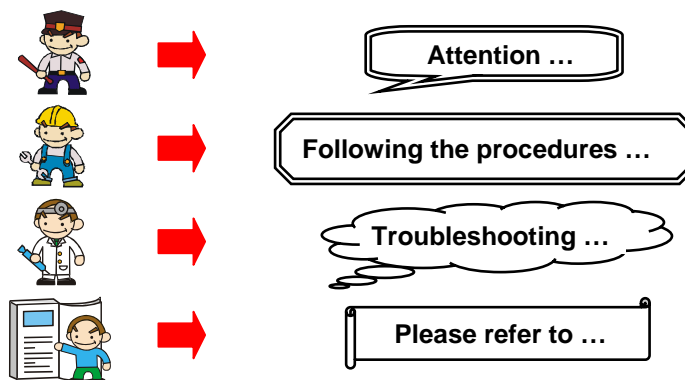
## You have to know !!!

- ⚠ The images and pictures in this manual are for reference only and may vary slightly from actual product installation depending on specific hardware models, third party components and software versions.
- ⚠ Unplug your computer when installing components and configuring switches and pins.
- ⚠ This mainboard contains very delicate IC chips. Use a grounded wrist strap when working with the system.
- ⚠ Do not touch the IC chips, leads, connectors or other components.
- ⚠ Unplug the AC power when you install or remove any device on the mainboard.

## Package Contents

- ◆ KX600A-GE/ KX600A PRO/ KX600A mainboard
- ◆ IDE Cable
- ◆ FDC Cable
- ◆ USB Bracket (optional)
- ◆ Game Port Bracket (optional)
- ◆ SPDIF & FRONT AUDIO Bracket (optional)
- ◆ SATA Power cord / SATA Cable (optional)
- ◆ Installation and Setup Driver CD
- ◆ KX600A Series User Manual

## Symbols



# **KX600A Series**

**VIA® KT600 & VT8237**

**Supports Socket 462 AMD®**

**Athlon XP™/ Athlon™/ Duron™/ Barton™ Processors**

## **USER Manual**

### **Dimensions (ATX form-factor):**

- 200mm x 293mm (WxL)

### **Operating System:**

- Supports most popular operating systems: Windows® 9X/ME/2000/XP etc.

## Contents

<b>CHAPTER 1. GETTING STARTED .....</b>	<b>1</b>
INTRODUCTION.....	1
SPECIFICATION .....	2
CONFIGURATION .....	5
Layout of KX600A-GE .....	5
Layout of KX600A PRO .....	6
Layout of KX600A .....	7
HARDWARE INSTALLATION .....	8
CPU Processor Installation .....	8
Memory Installation .....	9
Back Panel Configuration.....	12
Front Panel Indicator: SW/LED、PWRLED、SPEAKER.....	14
Connectors .....	15
Headers & Jumpers.....	16
Audio Connectors .....	18
Slots .....	20
Power Supply Attachments.....	20
<b>CHAPTER 2. BIOS SETUP.....</b>	<b>21</b>
INTRODUCTION.....	21
MAIN MENU .....	23
ADVANCED BIOS FEATURES .....	25
INTEGRATED PERIPHERALS .....	33
POWER MANAGEMENT.....	37
HARDWARE MONITOR .....	42
LOAD DEFAULTS .....	43
EXIT MENU.....	44
<b>CHAPTER 3: SOFTWARE SETUP .....</b>	<b>45</b>
SOFTWARE LIST .....	45
SOFTWARE INSTALLATION.....	45
<b>CHAPTER 4: TROUBLESHOOTING .....</b>	<b>48</b>
APPENDIX I: SUPER 5.1 CHANNEL SETUP.....	51
APPENDIX II: SATA RAID 0/1 SETUP.....	52

# Chapter 1. Getting Started

## Introduction

Congratulations on choosing the KX600A Series mainboard! The KX600A series includes the KX600A-GE, KX600A PRO and KX600A. These are based on VIA® KT600 Northbridge chipset and VT8237 Southbridge chipset. It also supports AMD® Athlon XP™/ Athlon™/ Duron™/ Barton™ Processors with a FSB (Front Side Bus) frequency of 200/ 266/ 333/ 400 MHz.

The KX600A Series provide 3 sockets using 184 pin DDR SDRAM with a total capacity of up to 3GB. You can install DDR400/ 333/ 266 (PC3200/ 2700/ 2100) SDRAM.

The KX600A Series provide one AGP Slot for 2X/ 4X/ 8X (1.5V only) AGP cards.

The KX600A Series include built in IDE facilities that support Ultra ATA 33/ 66/ 100/ 133. The KX600A Series also include built in SATA facilities that support Serial ATA 150 and support SATA RAID 0 or 1.

The KX600A Series also comes with an AC'97 Sound Codec (ALC655) which supports high quality 6 channel audio (**Super 5.1 Channel Audio Effect**). It also supports Sony/ Philips Digital Interface (S/PDIF).

The KX600A Series also include CPU Over Temperature Protection (OTP). When CPU temperature rises above normal values, the system will automatically shut down to protect your system from overheating. But the OTP is only functional when using the Athlon XP™ or the Barton™ CPUs.

The KX600A Series also comes with eight USB 2.0 ports.

The KX600A-GE and KX600A PRO also comes with a LAN Chip which supports a back panel LAN port.

The company's 3 Year Limited Warranty for this product covers both labor costs and replacement parts during the 1st year. Only labor costs are covered during the 2nd and 3rd years (replacement parts will be charged during the 2nd and 3rd years).

All of the information in this manual only for reference. This specification is subject to change without notice.

## Specification

### CPU:

- Supports Socket 462 (Socket A)
- Supports AMD® Athlon XP™, Athlon™, Duron™, Barton™ processors

### Speed:

- 200/ 266/ 333/ 400 MHz Front Side Bus frequency
- 33 MHz, 32 bit PCI interface (PCI 2.2 compliant)
- 66 MHz AGP 2.0 compliant interface that supports 2X/ 4X data transfer modes
- 66 MHz AGP 3.0 compliant interface that supports 8X data transfer modes

### Chipset:

- Northbridge Chip – VIA KT600
- Southbridge Chip – VIA VT8237
- I/O Controller – Winbond Super I/O W83697HF
- AC'97 Codec – Realtek ALC655
- LAN Controller – Realtek RTL8110S (only for KX600A-GE)  
Realtek RTL8100C (only for KX600A PRO)

### DRAM Memory:

- Supports DDR400 (PC3200)/ DDR333 (PC2700)/ DDR266 (PC2100) SDRAM
- Supports 64 MB/ 128 MB/ 256 MB/ 512 MB/ 1 GB unbuffered/non-ECC DIMM modules
- Supports up to three memory modules with a total capacity of 3 GB
- Supports only two DDR400 double-sided memory modules with a total capacity of 2 GB (see memory installation section for more details)

### Green Functionality:

- Supports Phoenix-Award BIOS™ power management functionality
- Contains an inactivity power down timer that can be set from 1 to 15 minutes
- Wakes from power saving sleep mode with any keyboard or mouse activity

### Shadow RAM:

- This mainboard is equipped with a memory controller providing shadow RAM and support for ROM BIOS

**BUS Slots:**

- Provides one AGP slot (1.5V only)
- Provides five PCI bus slots

**Flash Memory:**

- Supports flash memory functionality
- Supports ESCD functionality

**Hardware Monitor Function:**

- Monitors CPU Fan/ Chassis Fan Speed
- Monitors CPU & system Temperature
- Monitors System Voltage

**AC'97 Sound Codec Onboard:**

- AC-LINK protocol compliance
- Compliant with AC'97 2.3 specification
- 18-bit full duplex stereo ADC, DACs
- SNR>95 db through mixer and DAC
- 6-channel playback capability (Super 5.1 Channel Audio Effect)

**LAN Chip:**

- Supports 10/ 100/ 1000 Mbps Ethernet for KX600A-GE mainboard
- Supports 10/ 100 Mbps Ethernet for KX600A PRO mainboard

**Universal Serial Bus:**

- Supports eight USB 1.1/2.0 ports for USB interface devices

**IDE Facilities:**

- Supports Ultra ATA 33, Ultra ATA 66, Ultra ATA 100, Ultra ATA 133
- Supports IDE interface with CD-ROM
- Supports high capacity hard disk drives
- Supports installation of up to 4 drives, with separate IDE connections for Primary and Secondary connectors

## **KX600A Series**

### **Serial ATA facilities:**

- Compatible with SATA Spec 1.0
- Supports Serial ATA specification of 150 MB/sec transfers
- Supports SATA RAID 0 or RAID 1 mode

### **I/O facilities:**

- One multi-mode Parallel Port capable of supporting the following specifications:
  1. Standard & Bi-direction Parallel Port
  2. Enhanced Parallel Port (EPP)
  3. Extended Capabilities Port (ECP)
- Supports two serial ports, 16550 UART
- Supports PS/2 mouse and PS/2 keyboard
- Supports 360 KB, 720 KB, 1.2 MB, 1.44 MB, and 2.88 MB floppy disk drives
- MIDI compatible
- Game port compatible

### **BIOS:**

- Phoenix-Award™ BIOS
- Supports APM1.2
- Supports USB Legacy function
- Supports ACPI power management

### **Sophisticated OTP (Over Temperature Protection):**

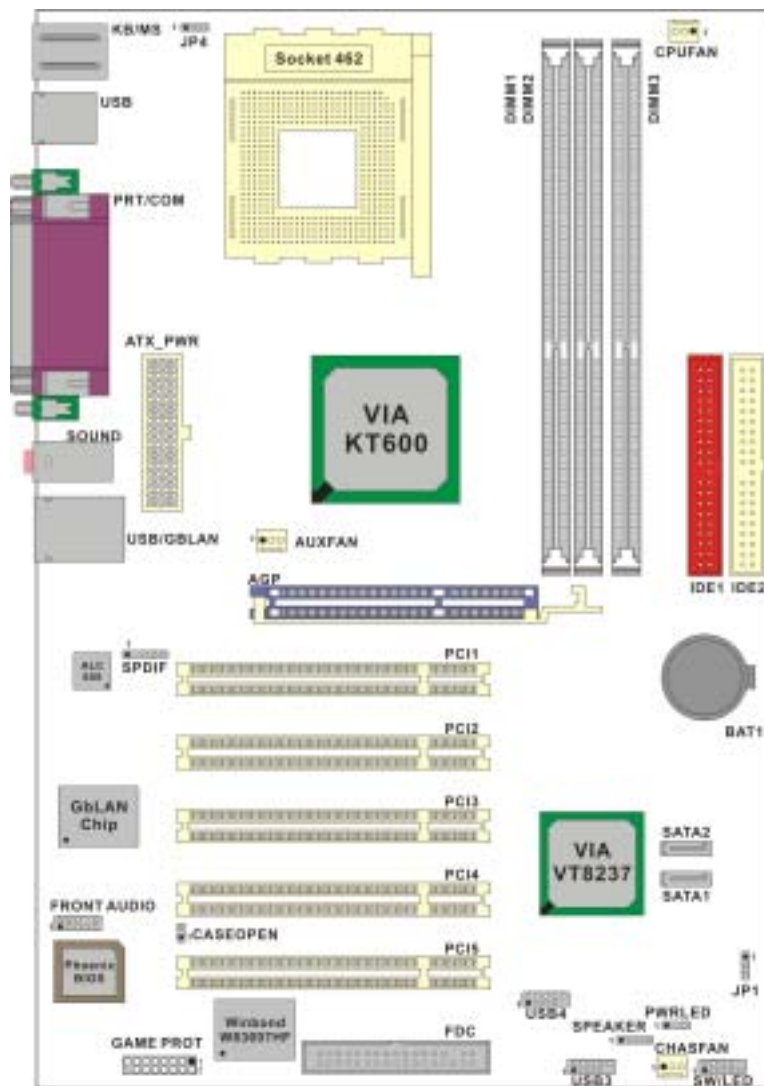
- Special design for CPU Over Temperature Protection.
- OTP is functional when using the Athlon XP™ or the Barton™ CPUs.

### **Watch Dog Timer:**

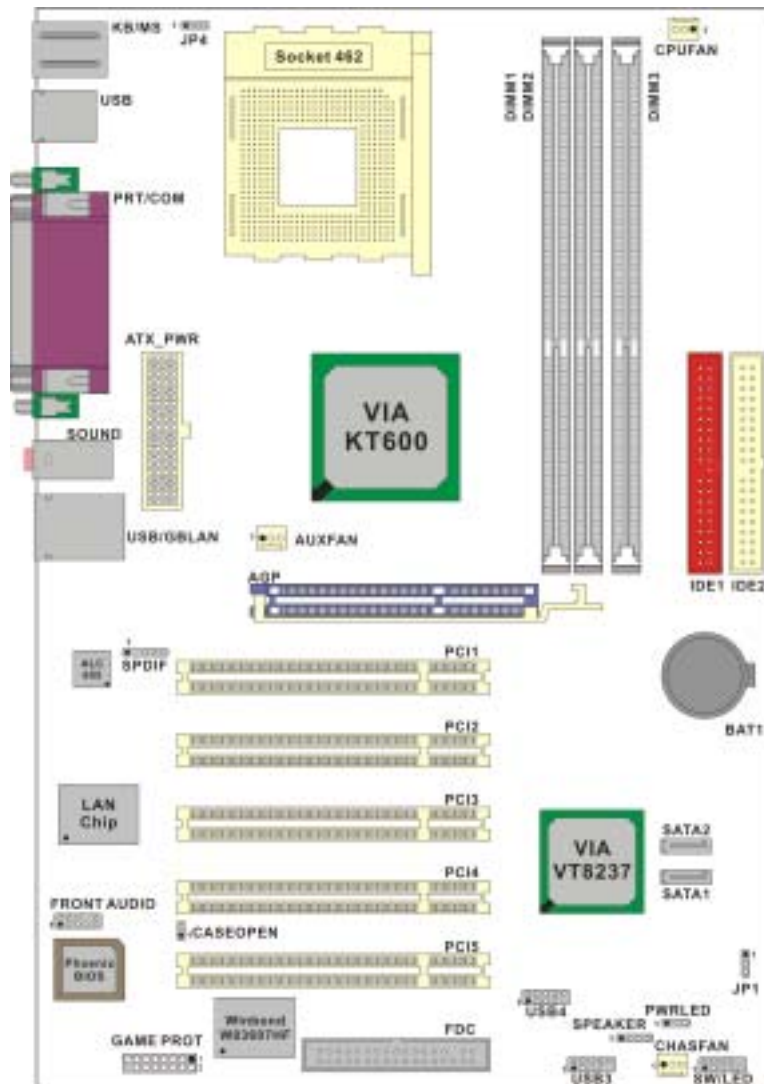
- The mainboard contains a special feature called the “Watch Dog Timer” which is used to detect when the system is unable to handle over-clocking configurations during POST stage. Once detected the system will reset the configurations and reboot the system after five seconds.



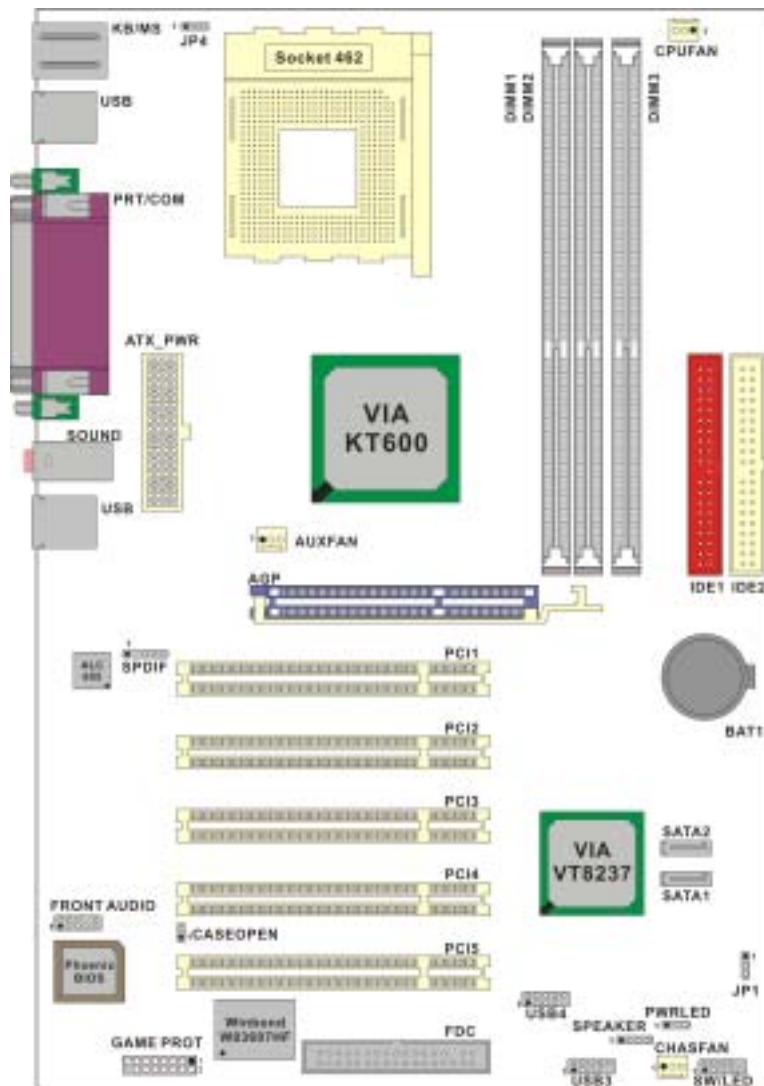
# Configuration Layout of KX600A-GE



## Layout of KX600A PRO



## Layout of KX600A



## Hardware Installation

This section will assist you in quickly installing your system hardware. Wear a wrist ground strap before handling components. Electrostatic discharge may damage your system components.

### CPU Processor Installation

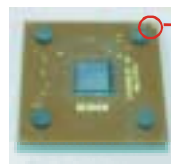
This mainboard supports AMD® Athlon XP™/ Athlon™/ Duron™/ Barton™ processors using a Socket A (Socket 462 Pin package). Before building your system, we suggest you visit the AMD website and review the processor installation procedures. <http://www.amd.com>

#### CPU Socket A Configuration Steps:

1. Locate the CPU socket on your mainboard and nudge the lever away from the socket. Then lift the lever to a 90-degree angle.
2. On the socket, locate the corner that has the pin-1 receptor. This corner will have a cut-corner on the rectangular shaped pattern of pin holes on the socket. Match the corner on the CPU with the pin-1 receptor on the socket and lower the CPU onto the socket. The bottom of the CPU should be flush with the face of the socket.

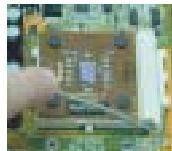


**Pin-1 Receptor**

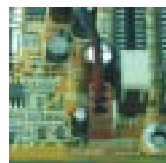


**Corner**

3. Lower the lever until it snaps back into position. This will lock down the CPU.



4. Smear thermal grease on top of the CPU. Lower the CPU fan onto the CPU and use the clasps on the fan to attach it to the socket. Finally, extend the power cable from the fan and insert it onto the CPUFAN adapter.

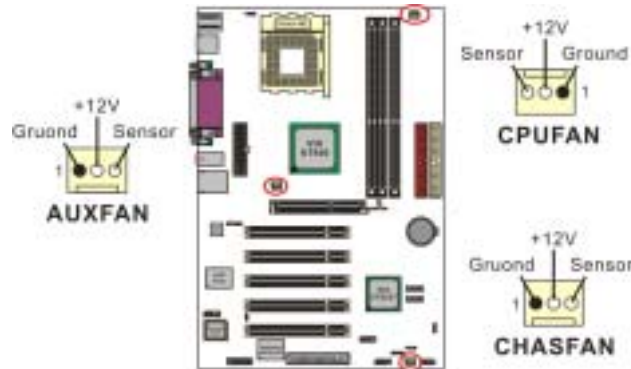


#### **Attention**

Overheating may damage the CPU and other sensitive components. Please check the installation completely before starting the system. Make sure the heatsink and the CPU fan are properly installed.

## FAN Headers

Three power headers are available for cooling fans, which play an important role in maintaining the ambient temperature in your system.

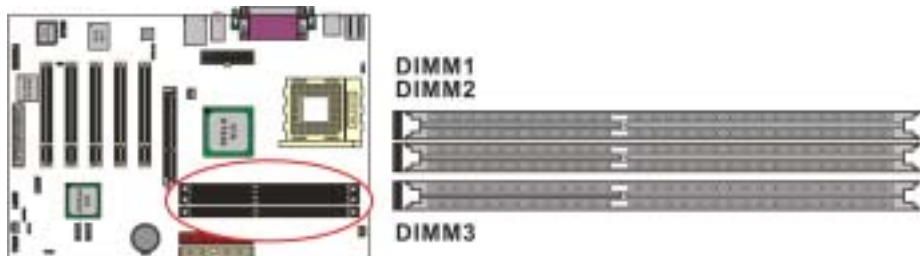


### Attention

This system has a BIOS configuration feature that issues a warning (during POST) when the CPU fan is not plugged in or is not functioning. In order to make use of this feature, you must make sure that the CPU power cable is attached specifically to the “CPUFAN” header. The BIOS configuration option is described in the “Hardware Monitor” section of the BIOS Setup Utility Chapter.

## Memory Installation

The KX600A Series contain 3 sockets, which use 184-pin DDR SDRAM with a total memory capacity of up to 3 GB. You can install unbuffered & non-ECC DDR400/ 333/ 266 (PC3200/ 2700/ 2100) SDRAM. It supports only DDR266 when installed with CPUs that have clock speeds of 100 MHz.



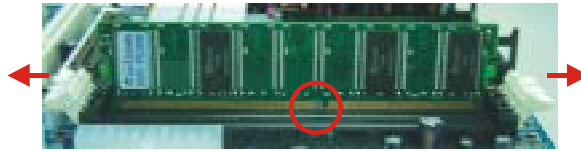
## **KX600A Series**

\*If you are planning to use all three DIMM sockets, you must take into consideration the address bus configuration which is not equally distributed amongst the three sockets. DIMM3 has its own address bus, but DIMM1 and DIMM2 share a single address bus. It is recommended that you install memory modules that balance the load between the two address busses, both physically (chips on each module) and in terms of total memory.

For example, an ideal configuration would be to install a double-sided, 16-chip module into DIMM3 containing a total of 1.0 GB of memory. Then you can install single-sided, 8-chip, 512 MB modules into DIMM1 and DIMM2. Or you want to use only DDR400 double-sided DIMMs, we suggest that you use only two of the DIMM sockets. We also suggest that you use either DIMM1 and DIMM3 together or DIMM2 and DIMM3 together.

### **RAM Module Installation:**

1. Pull the white plastic tabs on each side of the slot away from the slot.
2. Match the notch on the bottom of the RAM module with the corresponding pattern in the DIMM slot. This ensures that the module is inserted properly.



3. Lower the RAM module into the DIMM Slot and press firmly using both thumbs until the module snaps into place.



4. Repeat steps 1, 2 and 3 for the remaining RAM modules.

\* The pictures above are for reference only and may vary slightly for your mainboard.

### **Frequency / Voltage Control**

This mainboard automatically detects and recognizes the DDR Speed and the CPU Voltage. You can otherwise override these values using the BIOS Setup Utility.

#### **Configuring using the BIOS Setup Utility**

To access the BIOS Setup Utility, reboot your system. During the reboot process you will be given an opportunity to press the “DEL” key to enter the BIOS Setup Utility.

From the BIOS Setup Utility access the “Advanced” section and then scroll down to the “Frequency / Voltage Control” field. Adjust the “CPU Host Frequency”, “DDR:CPU Ratio” and “CPU Clock Ratio” according to the formulas below.

## Formulas

CPU Speed = CPU Clock Ratio \* CPU Host Frequency

DDR Speed = DDR: CPU Ratio \* CPU Host Frequency

(The CPU Clock Ratio is usually locked by the CPU manufacturer which means it will not be displayed. You can adjust the CPU Host Frequency to change the CPU speed. For more details, please refer to the Frequency / Voltage Control section in BIOS.)

Note: The AGP and PCI frequencies are both calculated from the CPU Host frequency according to the table below. To determine your frequencies, first locate the row that corresponds to the “Default CPU Host Frequency” frequency that is set for your system. Then, calculate the AGP and PCI frequencies according to the formulas in the adjacent cells.

Default CPU Host Frequency	PCI frequency	AGP frequency
100 MHz	CPU Host frequency $\div$ 3	CPU Host frequency * (2/3)
133 MHz	CPU Host frequency $\div$ 4	CPU Host frequency * (2/4)
166 MHz	CPU Host frequency $\div$ 5	CPU Host frequency * (2/5)
200 MHz	CPU Host frequency $\div$ 6	CPU Host frequency * (2/6)

(You can adjust the “CPU Host Frequency” in the BIOS Setup Utility. If you do not adjust the option, then the default CPU Host Frequency will be equal of default CPU Host Frequency.)

eg. If your “Default CPU Host Frequency” is set to 133, and you make no adjustments to the “CPU Host Frequency”. Then the “CPU Host Frequency” will be 133, the AGP frequency will be 66 MHz and the PCI frequency will be 33 MHz.

## Watch Dog Timer

This mainboard comes with a special feature called “Watch Dog Timer” which is used to detect when the system is unable to boot using the manual over-clocking configurations. After you power on the system, BIOS will check the last system POST status. If it was successful, BIOS will set the user configured values stored in the CMOS. If unsuccessful, the “Watch Dog Timer” will restore system defaults in the CMOS and reset the system.

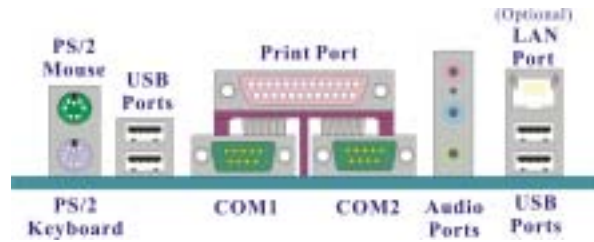
On most systems you would need to remove the cover of your system and re-jumper the clear CMOS switches on the mainboard when your system encounters over-clocking problems. With the “Watch Dog Timer”, overlocking settings will be automatically cleared and reset.



### Before Overclocking

Please make sure your system components are capable of overclocking. If you are not familiar with the overclocking, we strongly recommend that you to set the clock to the default settings. We do not guarantee that damage will or will not occur when overclocking.

## Back Panel Configuration



### PS/2 Mouse & PS/2 Keyboard Connectors: KB/MS

This mainboard provides a standard PS/2 mouse connector and PS/2 Keyboard connector. The pin assignments are described below:



Pin	Assignment	Pin	Assignment
1	Data	4	+5 V (fused)
2	No connect	5	Clock
3	Ground	6	No connect

### USB & LAN Connectors: USB & USB/ (LAN is optional)

There are four USB connectors on the back panel. These USB connectors are used to attach to USB devices such as: keyboards, mice and other USB devices. You can plug the USB devices directly into this connector. The KX600A PRO and KX600A-GE also provide a LAN port. You can plug LAN devices directly into this connector.



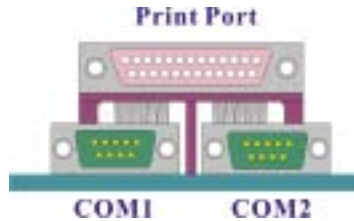
Pin	Assignment	Pin	Assignment
1	TX+	5	NC
2	TX-	6	RX-
3	RX+	7	NC
4	NC	8	NC

Pin	Assignment	Pin	Assignment
1/5	+5 V (fused)	3/7	USBP0+/P1+
2/6	USBP0-/P1-	4/8	Ground



## **Serial and Parallel Interface Ports**

The KX600A Series come equipped with two serial ports and one parallel port.



### **Parallel Interface Port: PRT**

The parallel port on your system has a 25-pin, DB25 connector and is used to interface with parallel printers and other devices using a parallel interface.

### **The Serial Interface: COM1/ COM2**

The serial interface port is sometimes referred to as a RS-232 port or an asynchronous communication port. Mice, modems and other peripheral devices can be connected to a serial port.

## **Audio Port Connectors**



**Speaker-Out** Connects to standard audio speakers or headphones. This port becomes the front speakers when 5.1 Channel Audio Effects driver is installed and enabled.

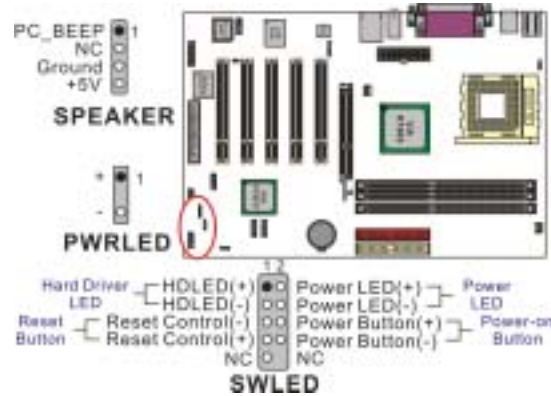
**Line In** Connects to an external audio device such as a CD player, tape player or other audio devices that provide audio input. This port becomes the rear speakers when 5.1 Channel Audio Effects driver is installed and enabled.

**Mic In** Connects to a microphone. This port becomes the subwoofer/center out when 5.1 Channel Audio Effects driver is installed and enabled.



This mainboard supports Super 5.1 Channel Audio effects which turns your standard Speaker Out, Lin In, Mic In audio connectors into a 6 channel audio system. See Appendix 1 for more information.

## **Front Panel Indicator: SW/LED、PWRLED、SPEAKER**



### **HD LED (Hard Drive LED Connector/ red)**

This connector can be attached to an LED on the front panel of a computer case. The LED will flicker during disk activity. This disk activity only applies to those IDE drives directly attached to the system board.

### **RST SW (Reset Switch/ blue)**

This connector can be attached to a momentary SPST switch. This switch is normally left open. When closed it will cause the mainboard to reset and run the POST (Power On Self Test).

### **PWR-LED (2-pin Power LED Connector/ green)**

The mainboard provides two power LED connector. If there is a 2-pin power LED cable on the front panel of a computer case. You can attach it to the 2-pin power LED connector. The LED will illuminate while the computer is powered on.

### **PWR SW (Power on Switch/ orange)**

This connector can be attached to a front panel power switch. The switch must pull the Power Button pin to ground for at least 50 ms to signal the power supply to switch on or off (the time required is due to internal debounce circuitry on the system board). At least two seconds must pass before the power supply will recognize another on/off signal.

### **PWR-LED (3-Pin Power LED Connector/ green)**

The mainboard provides two power LED connector. If there is a 3-pin power LED cable on the front panel of a computer case. You can attach it to the 3-pin power LED connector.

### **SPEAKER (Speaker Header/ violet)**

A front panel speaker can be connected to this connector. When you boot your computer, the speaker sounds a short “beep”. If there is something wrong during the Power On Self-Test, the speaker sounds “irregular beep” to warning you.

## Connectors

### Floppy Disk Connector: FDC

The mainboard provides a standard floppy disk connector (FDC) that supports 360K, 720K, 1.2M, 1.44M and 2.88M floppy diskettes. This connector supports the floppy drive ribbon cables provided in the packaging.

### Hard Disk Connectors: IDE1/ IDE2, SATA1/ SATA2

The mainboard has a 32-bit Enhanced PCI IDE Controller that supports Ultra ATA 33, Ultra ATA 66, Ultra ATA 100 and Ultra ATA 133. It has two HDD connectors, IDE1 and IDE2. The mainboard also has two Serial ATA connectors that support SATA RAID 0 or 1.

#### IDE1 (Primary IDE Connector)

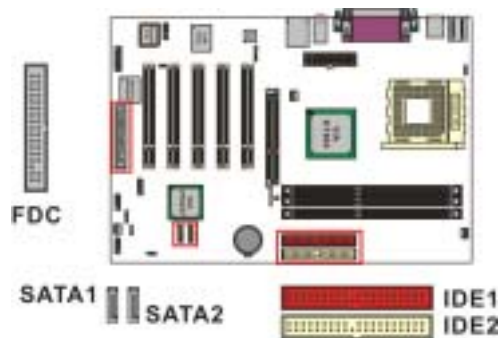
You can connect up to two hard drives to IDE1. If you attach two drives, you must use a ribbon cable with three connectors. You must also configure one drive as the master and one drive as the slave, using the jumpers located on each drive.

#### IDE2 (Secondary IDE Connector)

The IDE2 controller can also support a Master and a Slave drive. The configuration is similar to IDE1.

#### SATA1/ SATA2

The SATA connectors support transfer rate to 150 MB/s and SATA RAID 0 or 1 mode. The connectors only can connect one serial ATA hard disk device each.

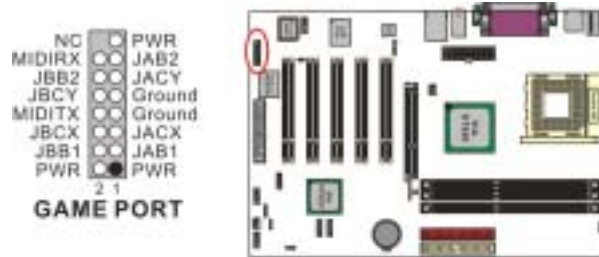


This mainboard supports SATA RAID 0 or 1. See appendix II for more information.

## Headers & Jumpers

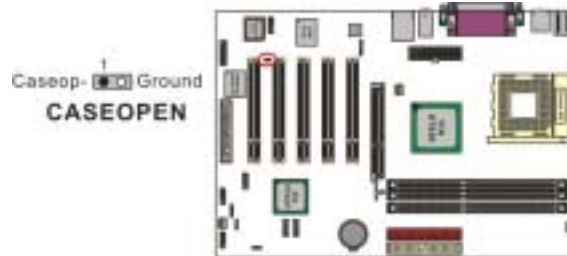
### Game Port Header: GAME PORT

There is a game port header on these mainboards. To use this header, you must attach a game port bracket-cable so that you can interface to gaming devices (game port bracket is optional).



### Case Open Warning Header: CASE OPEN

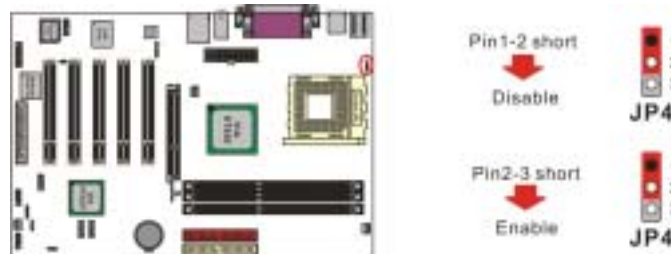
This connector is used to warn the user that the computer case has been previously opened. To use this functionality, you have to enable the CASE OPEN warning function in the BIOS Setup Utility. When your computer case is opened, your system will show alert messages during boot up. To use this function, your computer case must be equipped with a “case open” cable.



### OTP (Over Temperature Protection) Jumper: JP4

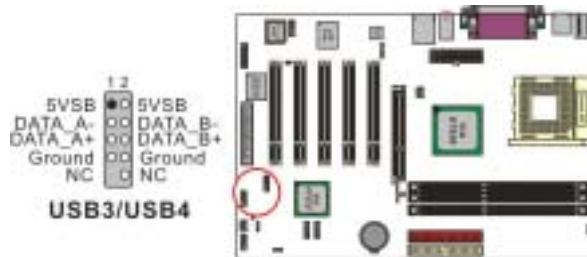
The mainboard supports a special design for CPU Over Temperature Protection. If this function is “Enabled” and the CPU temperature rises above the normal range, the system will automatically shut down and you have to unplug the ATX\_PWR connector. Remove and reinstall the CPU heat sink also check to make sure the CPU fan is working properly.

\*OTP is only functional when using the Athlon XP™ or the Barton™ CPUs.



## Front USB Headers: USB3/ USB4

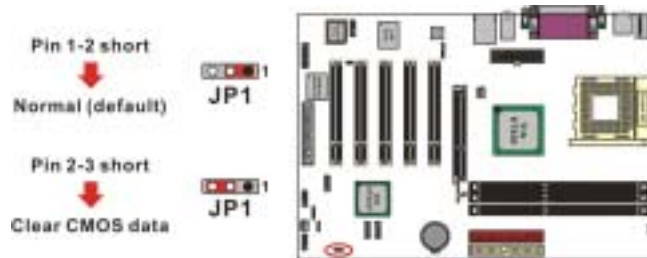
These mainboards provide 2 USB headers on the board allowing for 4 additional USB ports. To make use of these headers, you must attach a USB bracket/cable with USB ports (some models will come packaged with a USB 4-port bracket-cable). The optionally packaged bracket will have two connectors that you can connect to the headers (USB3, USB4). The other end (bracket containing the USB ports) is attached to the computer casing



If you are using a USB 2.0 device with Windows 2000/XP, you will need to install the USB 2.0 driver from the Microsoft® website. If you are using Service pack 1 (or later) for Windows® XP, and using Service pack4 (or later) for Windows® 2000, you will not have to install the driver.

## Clear CMOS Jumper: JP1

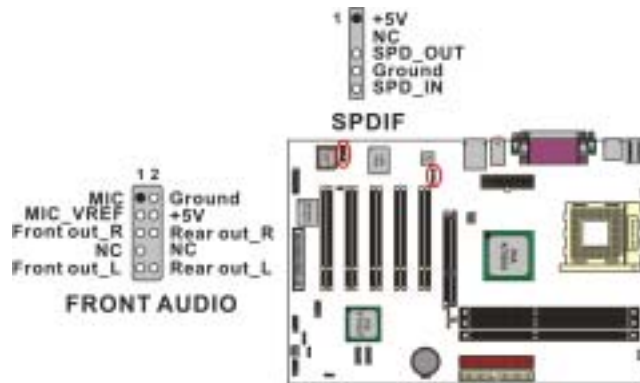
The “Clear CMOS” jumper is used when you cannot boot your system due to some CMOS configuration such as a password that is forgotten. This jumper allows you to reset the CMOS configurations, and then reconfigure.



The following steps explain how to reset your CMOS configurations when you have forgotten your system password.

1. Turn off your system and disconnect the AC power cable.
2. Set JP1 to OFF (2-3 Closed).
3. Wait several seconds.
4. Set JP1 to ON (1-2 closed).
5. Connect the AC power cable and turn on your system.
6. Reset your new password.

## Audio Connectors



### Front Panel Audio Header: FRONT AUDIO

If your computer case has been designed with embedded audio equipment or you are using an audio bracket (optional). You can attach these components to the FRONT\_AUDIO header of the mainboard. First remove the jumper caps covering the FRONT\_AUDIO pins. Use pins 1, 3 to connect to the case microphone. Use pins 9,5 to connect to the earphone. If you do not intend to use the FRONT\_AUDIO panel, do not remove the jumper caps. The front panel audio & the back panel audio can not use simultaneously.



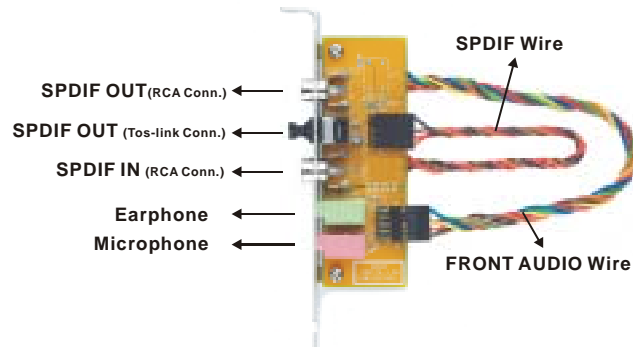
If the jumper caps are in place, jumper cap 1 is on pin 5, pin 6 and jumper cap 2 is on pin 9, pin 10. If you do not intend to use the FRONT\_AUDIO panel, do not remove the jumper caps.  
 Attention: The front panel audio & the back panel audio can not use simultaneously.

### S/PDIF Connector: SPDIF

S/PDIF (Sony/Philips Digital Interface) is an audio transfer file format, which provides high quality audio using optical fiber and digital signals. This mainboard is capable of delivering audio output and receiving audio input through the SPDIF header. One way you would use this header is by using an SPDIF & FRONT AUDIO bracket (optional) attached to your computer. This bracket will have two wires that you can attach to the SPDIF header and the FRONT\_AUDIO header. This bracket has RCA connectors similar to that used with most consumer audio products. Using the RCA connectors, the data can then be output to and input from an S/PDIF device. This bracket will also have the TOS-LINK connectors. You can also use the TOS-LINK connectors to output audio to an S/PDIF device. The devices that are receiving and sending information from this header must be S/PDIF compliant for optimal effect. Note that the SPDIF bracket is optional in the packaging that comes with this mainboard.

### **SPDIF & Front Audio Bracket (optional)**

You can connect the bracket to the SPDIF and FRONT AUDIO Headers.



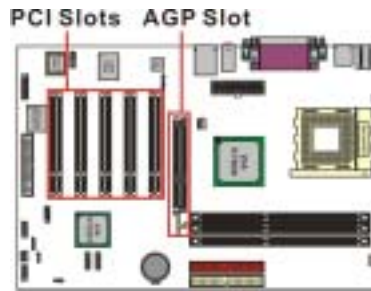
### **Digital CD Audio Setup for Win<sup>®</sup> 98**

Beginning with the “Start” button, select Setting → Control Panel → Multimedia. The screen will display (below left). Select the “CD Music” tab and check the “ Enable digital CD audio for this CD ROM device” (Shown as below right).



## Slots

The slots in this mainboard are designed for expansion cards used to complement and enhance the functionality of the mainboard.



### **AGP Slot: AGP**

The mainboard is equipped with a 2X/ 4X/ 8X & 1.5V only Accelerated Graphics Port (AGP) to support video cards.

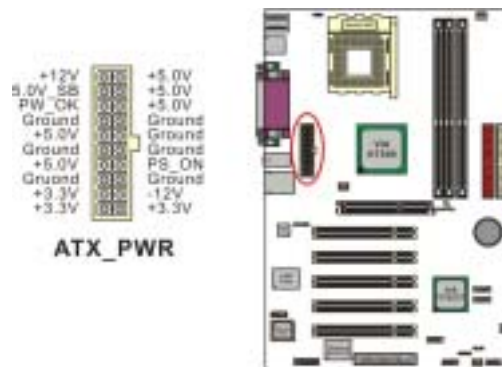
### **PCI Slots: PCI-5**

This mainboard is equipped with 5 standard PCI slots. PCI stands for Peripheral Component Interconnect and is a bus standard for expansion cards, which has, for the most part, supplanted the older ISA bus standard. This PCI slot is designated as 32 bit.

## Power Supply Attachments

### **ATX Power Connector: ATX\_PWR**

This ATX power supply uses a 20-pin connector. Make sure the connector is properly inserted before applying power.





# **Chapter 2. BIOS Setup**

## **Introduction**

This section describes PHOENIX-AWARD™ BIOS Setup program which resides in the ROM BIOS firmware. The Setup program allows users to modify the basic system configuration. The configuration information is then saved to CMOS RAM where the data is sustained by Li-battery after power-down.

The BIOS provides critical low-level support for standard devices such as disk drives, serial ports and parallel ports. As well, the BIOS controls the first stage of the boot process, loading and executing the operating system.

The PHOENIX-AWARD™ BIOS installed in Flash ROM is a custom version of an industry standard BIOS. This means that it supports the BIOS of AMD® based processors.

This version of the PHOENIX-AWARD™ BIOS includes additional features such as virus and password protection as well as special configurations for fine-tuning the system chipset. The defaults for the BIOS values contained in this document may vary slightly with the version installed in your system. (When you boot up the computer, the BIOS version will appear at up-left of the POST screen.)

## **Plug and Play Support**

This PHOENIX-AWARD™ BIOS supports the Plug and Play Version 1.0A specification as well as ESCD (Extended System Configuration Data) write.

## **APM Support**

This PHOENIX-AWARD™ BIOS supports Version 1.1 & 1.2 of the Advanced Power Management (APM) specification. These features include system sleep and suspend modes in addition to hard disk and monitor sleep modes. Power management features are implemented using the System Management Interrupt (SMI).

## **PCI Bus Support**

This PHOENIX-AWARD™ BIOS also supports Version 2.2 of the Intel PCI (Peripheral Component Interconnect) local bus specification.

## Supported CPUs

This PHOENIX-AWARD™ BIOS supports the AMD® Athlon XP™, Athlon™, Duron™, and Barton™ CPUs.

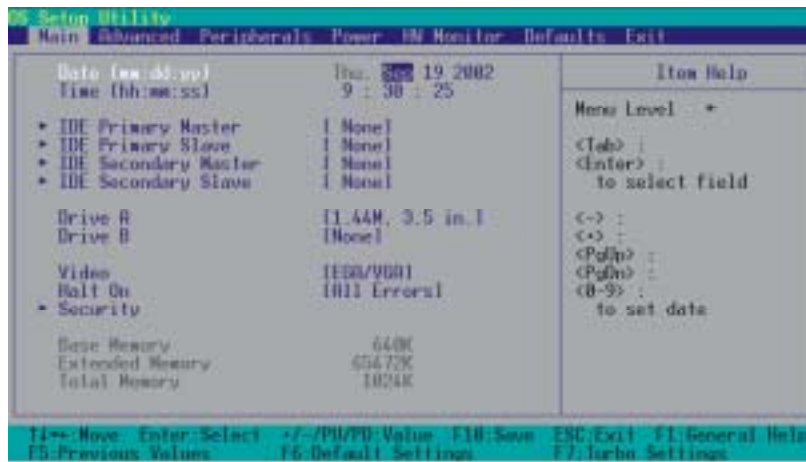
## Key Function

In general, you can use the arrow keys to highlight items, press <Enter> to select, use the <PgUp> and <PgDn> keys to change entries, press <F1> for help and press <Esc> to quit. The following table provides more detail about how to navigate within the BIOS Setup program.

<b>Keystroke</b>	<b>Function</b>
<b>Up arrow</b>	Move to previous item
<b>Down arrow</b>	Move to next item
<b>Left arrow</b>	Move to the item on the left (menu bar)
<b>Right arrow</b>	Move to the item on the right (menu bar)
<b>Esc</b>	Main Menu: Quit without saving changes Submenus: Exit Current page to the next higher level menu
<b>Move Enter</b>	Move to the item you desire
<b>PgUp key</b>	Increase the numeric value or enter changes
<b>PgDn key</b>	Decrease the numeric value or enter changes
<b>+ Key</b>	Increase the numeric value or enter changes
<b>- Key</b>	Decrease the numeric value or enter changes
<b>F1 key</b>	General help on Setup navigation keys
<b>F5 key</b>	Load previous values from CMOS
<b>F6 key</b>	Load the fail-safe defaults from BIOS default table
<b>F7 key</b>	Load the optimized defaults
<b>F10 key</b>	Save all the CMOS changes and exit

## Main Menu

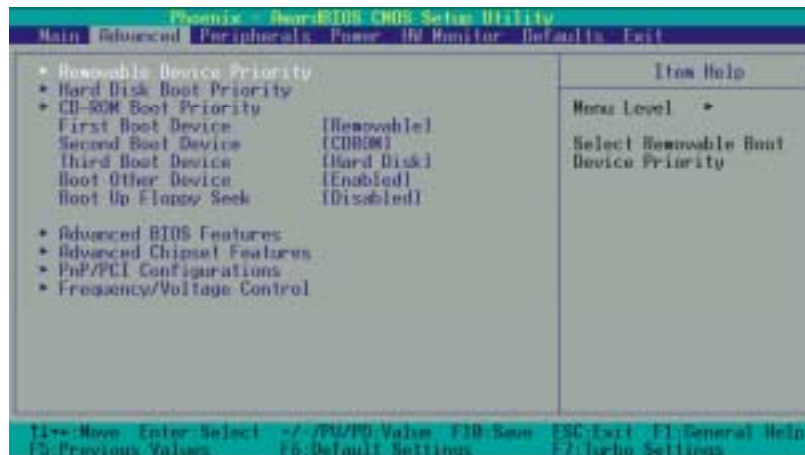
When you enter the PHOENIX-AWARD™ BIOS Utility, the Main Menu will appear on the screen. The Main menu allows you to select from several configuration options. Use the left/right arrow keys to select a particular configuration screen from the top menu bar or use the down arrow key to access and configure the information below.



**Main Menu Setup Configuration Options**

<b>Item</b>	<b>Options</b>	<b>Description</b>
<b>Date</b>	mm dd yyyy	Set the system date. Note that the 'Day' automatically changes when you set the date.
<b>Time</b>	Hh: mm: ss	Set the current time of the system.
<b>IDE Primary Master</b>	Options contained in sub menu.	Press <Enter> to enter the sub menu.
<b>IDE Primary Slave</b>	Options contained in sub menu.	Press <Enter> to enter the sub menu.
<b>IDE Secondary Master</b>	Options contained in sub menu.	Press <Enter> to enter the sub menu.
<b>IDE Secondary Slave</b>	Options contained in sub menu.	Press <Enter> to enter the sub menu.
<b>Drive A</b>  <b>Drive B</b>	360K, 5.25 in 1.2M, 5.25 in 720K, 3.5 in 1.44M, 3.5in 2.88M, 3.5 in None	Select the type of floppy disk drive installed in your system.
<b>Video</b>	EGA/VGA CGA 40 CGA 80 MONO	Select the default video device.
<b>Halt On</b>	All Errors No Errors All, but Keyboard All, but Diskette All, but Disk/ Key	Select the situation in which you want the BIOS to stop the POST process and notify you.
<b>Security</b>	Options contained in sub menu.	Press <Enter> to enter the sub menu.
<b>Base Memory</b>	N/A	Displays the amount of conventional memory detected during boot up.
<b>Extended Memory</b>	N/A	Displays the amount of extended memory detected during boot up.
<b>Total Memory</b>	N/A	Displays the total memory available in the system.

## Advanced BIOS Features



### Removable Device Priority

Select removable device priority. Just like floppy, LS120, ZIP-100, USB-FDD and USB-ZIP.

### Hard Disk Boot Priority

Select hard disk boot priority.

### CD-ROM Boot Priority

Select CD-ROM boot priority.

### First /Second/Third Boot Device

Select the order in which devices will be searched in order to find a boot device.

Options: Removable (default for first boot device), CD ROM (default for second boot device), Hard Disk (default for third boot device), Onboard LAN or (LAN on PCI1-5), Disabled

### Boot Other Device

Set to "Enabled" allows the system to try to boot from other devices if the system fails to boot from the 1st/ 2nd/ 3rd boot devices. Options: Enabled (default), Disabled

## **Boot Up Floppy Seek**

When Enabled, the BIOS tests (seeks) floppy drives to determine whether they have 40 or 80 tracks. Only 360-KB floppy drives have 40 tracks. Drives with 720KB, 1.2MB, and 1.44MB capacity all have 80 tracks. Because very few modern PCs have 40-track floppy drives, we recommend that you set this field to “Disabled”.

Options: Enabled、 Disabled (default)

## **Advanced BIOS Features**

### **CPU Internal Cache**

Make CPU internal cache active or inactive. System performance may degrade if you disable this item. Options: Enabled (default)、 Disable.

### **External Cache**

This option allows you to enable or disable “Level 2” secondary cache on the CPU to enhance performance. Options: Enabled (default)、 Disabled

### **CPU L2 Cache ECC Checking**

Make CPU L2 cache ECC function active or inactive. Options: Disabled、 Enabled (default)

### **Quick Power On Self Test**

Allow the system to skip certain tests while booting. This will speed up the boot process.

Options: Enabled (default)、 Disabled.

### **Swap Floppy Drive**

If the system has two floppy drives, choose “Enabled” to assign physical drive B to logical drive A and vice-versa. Options: Disabled (default)、 Enabled.

### **Boot Up NumLock Status**

Selects the power on state for NumLock.

Options: On (default) Numpad keys are number keys.

Off Numpad keys are arrow keys.

### **Typematic Rate Setting**

When “Enabled”, the “typematic rate” and “typematic delay” can be configured. Typematic Rate determines the keystroke repeat rate used by the keyboard controller..

Options: Disabled (default)、 Enabled

### **Typematic Rate (Chars/Sec)**

The rate at which a character repeats when you hold down a key.

Options: 6 (default)、8、10、12、15、20、24、30

### **Typematic Delay (Msec)**

The delay before keystrokes begin to repeat. Options: 250 (default)、500、750、1000

### **APIC Mode**

By enabling this option, "MPS version control for OS" can be configured.

Options: Disabled、Enabled (default)

### **MPS Version Control For OS**

The 1.1 version is the older version that supports 8 more IRQs in the Windows NT environment. Choose the new 1.4 version for Windows 2000 and Windows XP.

Options: 1.4 (default)、1.1

### **OS Select For DRAM > 64MB**

Select "OS2" only if you are running the OS/2 operating system with greater than 64 MB of RAM.

Options: Non-OS2 (default)、OS2

### **HDD S.M.A.R.T. Capability**

Self Monitoring Analysis and Reporting Technology is a technology that enables a PC to attempt to predict the possible failure of storage drives. Options: Disabled (default)、Enabled

### **Small LOGO (EPA) Show**

This item allows you to show or hide the small LOGO EPA.

Options: Disabled (default)、Enabled

## **Advanced Chipset Features**

### **DRAM Clock/ Drive Control**

Press <Enter> to enter next page for DRAM Clock/ Drive Control settings.

#### **DRAM Timing**

This item determines DRAM clock/ timing using the manual configuration.

Options: Manual、Auto (default)

## **KX600A Series**

### **DRAM CAS Latency**

This item determines CAS Latency. When synchronous DRAM is installed, the number of clock cycles of CAS latency depends on the DRAM timing. Do not reset this field from the default value specified by the system designer. Options: 1.5、 2、 2.5、 3

### **Precharge to Active (Trp)**

You can set the time to precharge. Options: 5T、 2T、 3T、 4T

### **Active to Precharge (Tras)**

This item allows you to select DRAM Active to Precharge Delay.  
Options: 7T、 6T、 8T、 9T

### **Active to CMD (Trcd)**

Select the DRAM delay time when being read. Options: 5T、 2T、 3T、 4T

### **DRAM Command Rate**

This item determines DRAM Command Rate.  
Options: 2T Command (default)、 1T Command

### **AGP & P2P Bridge Control**

Press <Enter> to enter next page for AGP & P2P Bridge Control.

### **AGP Aperture Size**

Select the size of the Accelerated Graphics Port (AGP) aperture. The aperture is a portion of the PCI memory address range dedicated for graphics memory address space. Host cycles that hit the aperture range are forwarded to the AGP without any translation.

Options: 1G、 512M、 256M、 128M (default)、 64M、 32M、 16M、 8M、 4M  
(The 1G and 512M options only appear when you install 8X AGP card.)

### **AGP Mode**

This item allows you to select the AGP Mode. Options: 1X、 2X、 4X、 8X  
(\*If you install the 8X AGP card, then the item will be lock in 8X option.)

### **AGP Driving Control**

By choosing “Auto” the system BIOS will automatically set the AGP output buffer drive strength. By choosing “Manual”, it allows user to set the AGP output buffer driver strength.



## **KX600A Series**

### **AGP Driving Value**

While the AGP Driving Control option is set to “Manual”, it allows the user to set AGP Driving Value. Options: DA (default)、00~FF

### **AGP Fast Write**

The AGP Fast Write technology allows the CPU to write directly to the graphics card bypassing the system AGP 4X speed. Choose “Enable” only when you used with AGP card support.

Options: Disabled (default)、Enabled

### **AGP Master 1 WS Write**

When enabled, writes to the AGP (Accelerated Graphics Port) are executed with one wait state.

Options: Disabled (default)、Enabled

### **AGP Master 1 WS Read**

When enabled, reads from AGP (Accelerated Graphics Port) are executed with one wait state.

Options: Disabled (default)、Enabled

### **AGP3.0 Calibration cycle**

This item will appear when you install the 8X VGA card. Options: Enabled (default)、Disabled

## **CPU & PCI Bus Control**

Press <Enter> to enter the next page for CPU & PCI Bus Control

### **PCI 1/2 Master 0 WS Write**

When enabled, writes to the PCI bus are executed with zero-wait states.

Options: Enabled (default)、Disabled

### **PCI Delay Transaction**

The chipset has an embedded 32-bit post write buffer to support delay transactions cycles. Select Enabled to comply with PCI specifications. Options: Disabled、Enabled (default)

## **Memory Hole**

When enabled, you can reserve an area of system memory for ISA adapter ROM. When this area is reserved, it cannot be cached. Refer to the user documentation of the peripheral you are installing for more information. Options: Disabled (default)、15M-16M

### **System BIOS Cacheable**

When enabled, accesses to system BIOS ROM addressed at F0000H-FFFFFH are cached, provided that the cache controller is enabled. Options: Enabled、 Disabled (default)

### **Video RAM Cacheable**

Select “Enabled” to allow caching of the video RAM which may improve performance. If any other program writes to this memory area, a system error may result. Options: Enabled、 Disabled (default)

## **PnP/PCI Configurations**

### **PNP OS Installed**

When set to “YES”, BIOS will only initialize the PnP cards used for the boot sequence (VGA, IDE, SCSI). The rest of the cards will be initialized by the PnP operating system like Windows® 95. When set to “NO”, BIOS will initialize all the PnP cards. For non-PnP operating systems (DOS, Netware), this option must be set to “NO”.

Options: No (default)、 Yes

### **Reset Configuration Data**

Select “Enabled” to reset the Extended System Configuration Data (ESCD) if you have installed a new add-on card and the system reconfiguration has caused such a serious conflict that the OS cannot boot. Options: Disabled (default)、 Enabled

### **Resources Controlled By**

BIOS can automatically configure all the boot and Plug and Play compatible devices. If you choose Auto, you will not be able to manually assign IRQ DMA and memory base address fields, since BIOS automatically assigns them. Options: Auto <ESCD> (default)、 Manual

### **IRQ Resources**

When resources are controlled manually, you can assign each system interrupt a type, depending on the type of device using the interrupt. This is only configurable when “Resources Controlled By” is set to “Manual”.

IRQ-3      assigned to: PCI device  
IRQ-4      assigned to: PCI device  
IRQ-5      assigned to: PCI device  
IRQ-7      assigned to: PCI device  
IRQ-9      assigned to: PCI device  
IRQ-10     assigned to: PCI device  
IRQ-11     assigned to: PCI device

## **KX600A Series**

IRQ-12 assigned to: PCI device

IRQ-14 assigned to: PCI device

IRQ-15 assigned to: PCI device

### **PCI / VGA Palette Snoop**

Some graphic controllers that are not VGA compatible take the output from a VGA controller and map it to their display as a way to provide boot information and VGA compatibility.

Options: Disabled (default), Enabled

### **PCI Latency Timer (CLK)**

This item allows you to set up the PCI Latency Time (0-255). If you select the "32" it will optimize PCI speeds. Options: 0-255, 32 (default)

### **PCI 1-5 IRQ Assignmen**

This item allows you to select an IRQ address for your PCI slot 1-5.

Options: Auto (default), 3, 4, 5, 7, 9, 10, 11, 12, 14, 15

## **Frequency/Voltage Control**

### **CPU Speed Detected**

This item displays the CPU speed information detected by the system.

### **CPU Clock Ratio**

Before you adjust the option, please make sure that your CPU ratio can be adjusted. This item displays the CPU ratio information detected by the system.

Options: 5, 5.5, 6, 6.5, 7, 7.5, 8, 8.5, 9, 9.5, 10, 10.5, 11, 11.5, 12, 12.5, 13, 13.5, 14, 15, 16, 16.5, 17, 18, 19, 20, 21, 22, 23, 24

\* It is possible that some systems with CPUs will have limitation about the options range is 5 to 12.5.

\* It is possible that some systems with Duron CPUs will shut down automatically after adjusting the CPU clock ratio. After 5 seconds, the systems will boot up by the value adjusted if the systems accept the value.

### **Spread Spectrum**

The Spread Spectrum function can reduce the EMI (Electromagnetic Interference) generated. Options: +/-0.25%, -0.5%, +/-0.5% (default), +/-0.75, Disabled

## **KX600A Series**

### **CPU Host Frequency (MHz)**

This item displays the CPU Host Clock. You can set it from 100 to 248. The default depends on your CPU frequency. If you over-clock the CPU clock ratio and the DDR:CPU ratio items can be adjusted. Default: By CPU speed

### **CPU:AGP:PCI Clock Ratio**

This item allows you to select the CPU:AGP:PCI clock ratio.

Options: 6:2:1、5:2:1、4:2:1、3:2:1

### **AGP/PCI Frequency (MHz)**

This item displays the AGP/PCI Frequency.

### **DDR:CPU Ratio**

This item allows you to adjust the DDR: CPU Clock Ratio. You can adjust this option to match the DDR module you have installed.

If the CPU host frequency is 100 → Options: 2.66X (default)

If the CPU host frequency is 133 → Options: By SPD、2.00X (default)、2.50X、3.00X

If the CPU host frequency is 166 → Options: By SPD、1.60X、2.00X (default)、2.40X

If the CPU host frequency is 200 → Options: By SPD (default)、1.33X、1.66X、2.00X

### **DDR Speed (strobe/sec)**

This item displays the DDR Speed. (CPU Host frequency \* DDR:CPU Ratio)

### **Default CPU Voltage (Volt)**

This item displays the CPU Voltage information which is detected by the system.

### **CPU Voltage (Volt)**

This item allows you to adjust your CPU core voltage. Options range from 1.200V~2.100V

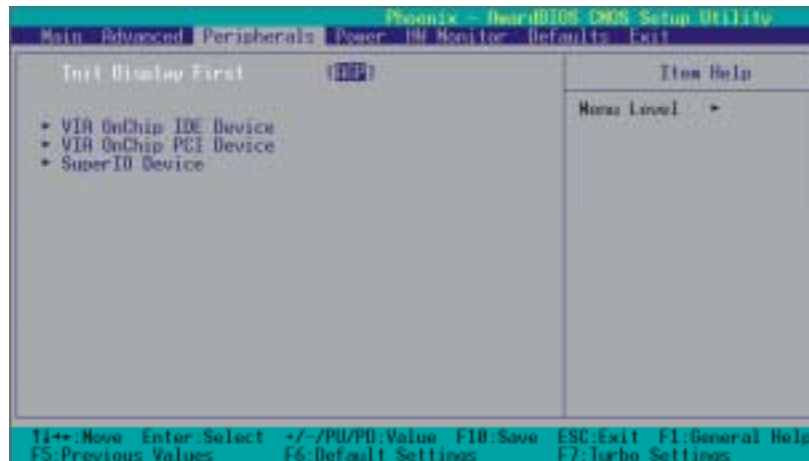
### **AGP Voltage (Volt)**

This item allows you to adjust the AGP Voltage. Options: 1.5 (default)、1.6、1.7、1.8

### **DDR Voltage (Volt)**

This item allows you to adjust the RAM voltage. Options: 2.65 (default)、2.70、2.75、2.80

## Integrated Peripherals



### Init Display First

With systems that have multiple video cards, this option determines whether the primary display uses a PCI slot or an AGP slot. Options: AGP、PCI Slot (default)

### VIA OnChip IDE Device

If you highlight the “VIA OnChip IDE Device” label and then press the enter key, it will take you to a submenu with the following options:

#### OnChip SATA

This item allows you to enable or disable on-chip SATA function.

Options: Enabled (default)、Disabled

#### SATA Mode

This item allows you to select the SATA Mode.

Options: RAID (default)、IDE

#### IDE Channel0/1

The mainboard chipset contains a PCI IDE interface with support for two IDE channels. Select “Enabled” to activate the first and/or second IDE interface. Select “Disabled” to deactivate an interface if you are going to install a primary and/or secondary add-in IDE interface. Options: Enabled (default)、Disabled

### **IDE Prefetch Mode**

The “onboard” IDE drive interfaces supports IDE prefetching for faster drive access. If you install a primary and/or secondary add-in IDE interface, set this option to “Disabled” if the interface does not support prefetching. Options: Enabled (default)、 Disabled

### **Primary/Secondary/Master/Slave PIO**

The IDE PIO (Programmed Input / Output) fields let you set a PIO mode (0-4) for each of the IDE devices that the onboard IDE interface supports. Modes 0 to 4 will increase performance incrementally. In Auto mode, the system automatically determines the best mode for each device. Options: Auto (default)、 Mode0、 Mode1、 Mode2、 Mode3、 Mode4.

### **Primary / Secondary /Master / Slave UDMA**

Ultra DMA/133 functionality can be implemented if it is supported by the IDE hard drives in your system. As well, your operating environment requires a DMA driver (Windows 95 OSR2 or a third party IDE bus master driver). If your hard drive and your system software both support Ultra DMA/133, select “Auto” to enable BIOS support.

Options: Auto (default)、 Disabled

### **IDE HDD Block Mode**

Block mode is otherwise known as block transfer, multiple commands, or multiple sector read/write. Select the “Enabled” option if your IDE hard drive supports block mode (most new drives do). The system will automatically determine the optimal number of blocks to read and write per sector. Options: Enabled (default)、 Disabled

### **VIA OnChip PCI Device**

If you highlight the “VIA OnChip PCI Device” label and then press the enter key, it will take you a submenu with the following options:

#### **AC’97 Audio**

This option allows you to control the onboard AC’97 audio.

Options: Enabled (default)、 Disabled

#### **Onboard LAN Device (only for KX600A PRO/ KX600A-GE)**

This option allows you to control the onboard LAN device.

Options: All Enabled (default)、 All Disabled

### **OnChip EHCI Controller**

This option should be enabled if your system has a USB 2.0 device installed on the system board. You will need to disable this feature if you install a USB 1.1 device.

Options: Enabled (default)、 Disabled

### **USB Device Support**

Enables support for USB attached devices. Options: Disabled (default)、 Enabled

### **USB Ram Allocate**

This item allows you to select the resource memory for USB device.

Options: Shadow、 Base MEM (default)

### **Super IO Device**

If you highlight the literal “Press Enter” next to the “Super IO Device” label and then press the enter key, it will take you a submenu with the following options:

#### **Onboard FDC Controller**

Select Enabled if your system has a floppy disk controller (FDC) installed on the system board and you wish to use it. If you install an add-in FDC or the system has no floppy drive, select “Disabled” in this field. Options: Enabled (default)、 Disabled

#### **Onboard Serial Port 1**

Select an address and corresponding interrupt for the first serial port.

Options: Disabled、 3F8/IRQ4 (default)、 2F8/IRQ3、 3E8/IRQ4、 2E8/IRQ3、 Auto

#### **Onboard Serial Port 2**

Select an address and corresponding interrupt for the second serial port.

Options: Disabled、 2F8/IRQ3 (default)、 3F8/IRQ4、 3E8/IRQ4、 2E8/IRQ3、 Auto.

#### **Onboard Parallel Port**

This item allows you to determine the parallel port interrupt and address.

Options: 378/IRQ7 (default)、 278/IRQ5、 3BC/IRQ7、 Disabled

### **Parallel Port Mode**

This option allows you to select an operating mode for the on board parallel port.

Options: ECP(default)      Extended Capabilities Port.  
          EPP                 Enhanced Parallel Port.  
          SPP                 Standard Printer Port.  
          ECP+EPP          ECP & EPP mode.  
          Normal

### **EPP Mode Select**

Select EPP port type 1.7 or 1.9. Options: EPP 1.7(default), EPP1.9.

### **ECP Mode Use DMA**

Select a DMA Channel for the port. Options: 3 (default), 1

### **Game Port Address**

Game Port I/O Address. Options: 201 (default), 209, Disabled

### **Midi Port Address**

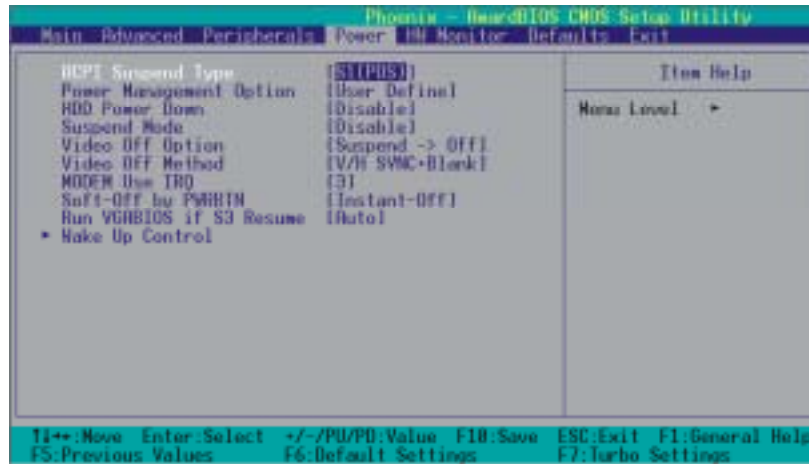
Midi Port Base I/O Address. Options: 330 (default), 300, 290, Disabled

### **Midi Port IRQ**

This determines the IRQ that Midi Port will use. Options: 5 (default), 7



## Power Management



The Power Management Setup Menu allows you to configure your system to utilize energy conservation features as well as power-up/ power-down options.

### ACPI Suspend Type

The item allows you to select the suspend type using the ACPI operating system.

Options: S1 (POS) (default)      Power on Suspend  
           S3 (STR)                      Suspend to RAM  
           S1 & S3                        POS and STR

### Power Management Option

There are three options of Power Management:

1. Min. Saving

Minimum power management

Suspend Mode = 1hour

HDD Power Down = 30 minutes

2. Max. Saving

Maximum power management (only available for s1 CPUs).

Suspend Mode = 1 min.

HDD Power Down = 6 min.

3. User Defined (default)

Allows you to set each mode individually.

When this option is enabled, the “suspend mode” time is configurable from 1 minute to 1 hour. The HDD Power Down, which ranges from 1 min. to 15 min. and includes a “disable” option.

Note: If you select Min. or Max. Power Saving modes, the “HDD Power Down” value and the “Suspend Mode” value are both fixed.

## **HDD Power Down**

When enabled, the hard disk drive will power down after a certain configurable period of system inactivity. All other devices remain active.

Options: Disabled (default), 1 Min, 2 Min, 3 Min, 4 Min, 5 Min, 6 Min, 7 Min, 8 Min, 9 Min, 10 Min, 11 Min, 12 Min, 13 Min, 14 Min, 15Min

## **Suspend Mode**

This item allows you to select the period of inactivity before the system is suspended or put into suspend mode.

Options: Disabled(default), 1Min, 2Min, 4Min, 6Min, 8Min, 10Min, 20Min, 30Min, 40Min, 1Hour

## **Video Off Option**

This field determines when to activate the video off feature for monitor power management.

Options: Suspend→Off (default), Always On.

## **Video Off Method**

This option determines the manner in which the monitor goes blank.

Options:

V/H SYNC+Blank(default) This selection will cause the system to turn off the vertical and horizontal synchronization ports and write blanks to the video buffer.

Blank Screen This option only writes blanks to the video buffer.

DPMS Support Initial display power management signaling.

## **Modem Use IRQ**

This determines the modem’s IRQ. Options: 3 (default), 4, 5, 7, 9, 10, 11, NA.

## **Soft-Off by PWRBTN**

Pressing the power button for more than 4 seconds forces the system to enter the Soft-Off state when the system has “hung.” Options: Delay 4 Sec, Instant-Off (default).

## **Run VGABIOS if S3 Resume**

Select whether you want to run VGABIOS when the system wakes up from the S3 resume function. Options: Auto (default), Yes, No

## **Wake Up Control**

If you highlight the “Wake Up Control” label and then press the enter key, it will display a submenu with the following options:

### **PWRON After PWR-Fail**

This option determines whether you want to restart the system after a power failure. Select “On”, to boot the system whether or not the system was on before power failure. Choose Former-Sts, to restore the system to the status before the power failure.

Options: Off (default), On

### **PS2KB Wake Up Select**

Use this option to configure the PS2 keyboard Wake Up feature.

“Password” Use this selection to force the user to enter a password after the system awakens from PS2 keyboard activity.

“Hot Key” Use PS2KB key to awake the system. See “PS2KB Wake Up from S3-S5” to configure the hotkey.

### **PS2KB Wake Up from S3/S4/S5**

This option is used when “PS2KB Wake Up Select” is configured as “HOT KEY”.

Options: Disable (default), Ctrl+F1(to F12), Power, Wake, Anykey.

### **Power Button Lock**

This item allows you to lock the power button. Options: Enabled, Disabled (default)

### **USB Wake Up**

This item allows you to select USB devices to awaken the system from suspend mode.

Options: Disabled (default), Enabled

## **VGA**

When set to “On”, any event occurring at a VGA Port will awaken a system which had been previously powered down. Options: OFF (default)、On.

## **LPT & COM**

When this option is set to On, any event occurring at a COM(serial)/LPT (printer) port will awaken a system which has been suspended.

Options: LPT/COM (default)、COM、LPT、NONE

## **HDD & FDD**

When set to “On”, any event occurring on a hard drive activity or a floppy drive activity will awaken the system which had been previously suspended. Options: ON、OFF (default)

## **PCI Master**

When set to “On”, you need a LAN add-on card which supports the power on function. It should also support the wake-up on LAN jumper. Options: OFF (default)、ON

## **PCI PME Wake Up**

When you select “Enabled”, a PME signal from any PCI card will awaken the system from suspend mode. Options: Disabled (default)、Enabled

## **Ring Wake Up**

This option allows you to awaken the system upon receiving an incoming call to a modem device. Option: Disabled (default)、Enabled

## **RTC Wake Up**

When “Enabled”, you can set the date and time at which the RTC (real-time clock) alarm awakens the system from Suspend mode. Options: Enabled、Disabled (default)

## **Date (of Month)**

You can choose which month the system will boot up. This field is only configurable when “RTC Wake Up” is set to “Enabled”

## **Resume Time (hh: mm: ss)**

You can choose the hour, minute and second the system will boot up. This field is only configurable when “RTC Wake Up” is set to “Enabled”

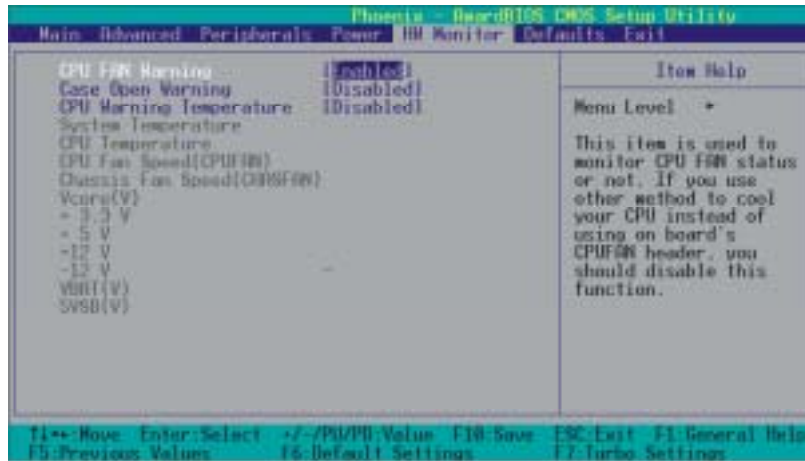
## KX600A Series

### **IRQs Activity Monitoring**

Press Enter to access a sub menu used to configure the different wake up events (i.e. wake on LPT & COMM activity).

Primary INTR	ON
IRQ3 (COM2)	Enabled
IRQ4 (COM1)	Enabled
IRQ5 (LPT2)	Enabled
IRQ6 (Floppy Disk)	Enabled
IRQ7 (LPT1)	Enabled
IRQ8 (RTC Alarm)	Disabled
IRQ9 (IRQ2 Redir)	Disabled
IRQ10 (Reserved)	Disabled
IRQ11 (Reserved)	Disabled
IRQ12 (PS/2 Mouse)	Enabled
IRQ13 (Coprocessor)	Disabled
IRQ14 (Hard Disk)	Enabled
IRQ15 (Reserved)	Disabled

## Hardware Monitor



### CPU FAN Warning

This item is used to monitor the “CPUFAN” header on the mainboard and warn the user (during POST) if the CPU fan is not operational or not plugged in. If you are not using the “CPUFAN” power header to supply power to your CPU fan, you must disable this feature.

Options: Disabled、 Enabled (default)

### Case Open Warning

If this function is set to “Enabled” and the case had been previously opened, the system will automatically display alert messages on the screen when you power on your computer. If this function is set to “Disabled”, the system will not show alert messages when you power on your computer even if the case is opened by others.

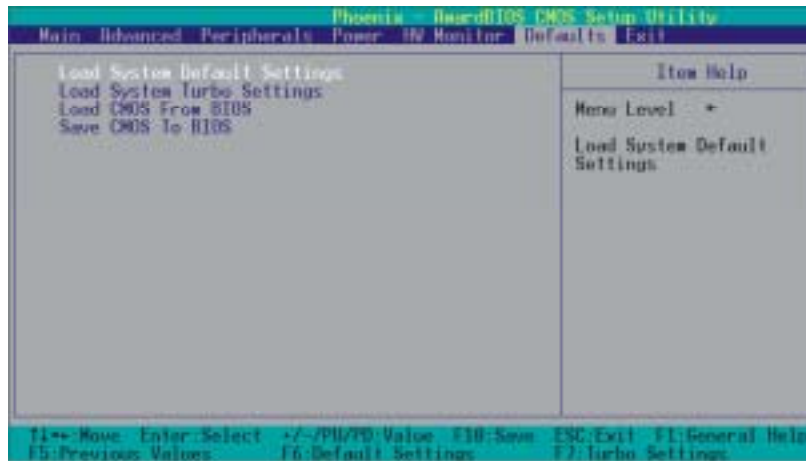
Options: Disabled (default)、 Enabled

### CPU Warning Temperature

When the CPU temperature is higher than this setting, the warning mechanism will be activated.

Options: Disabled (default)、 50°C/120°F、 53°C/127°F、 56°C/133°F、 60°C/140°F、 63°C/145°F、 66°C/151°F、 70°C/158°F。

## Load Defaults



### **Load System Default Settings**

Load System Default Settings.

### **Load System Turbo Settings**

Load System Turbo Settings.

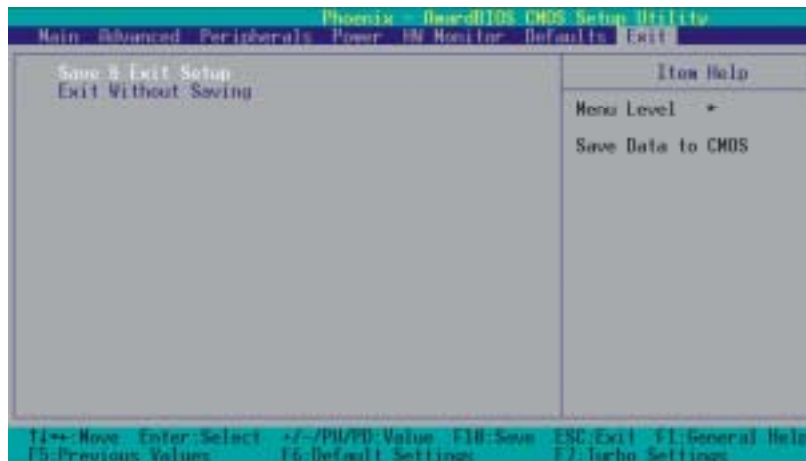
### **Load CMOS From BIOS**

Load defaults from flash ROM for systems without batteries.

### **Save CMOS To BIOS**

Save defaults to flash ROM for systems without batteries.

## Exit Menu



### **Save & Exit Setup**

Save all configuration changes to CMOS (memory) and exit setup. A confirmation message will be displayed before proceeding.

### **Exit Without Saving**

Abandon all changes made during the current session and exit setup. A confirmation message will be displayed before proceeding.





## KX600A Series



2. On the next screen, click the drivers that you want to install.



3. If you click the "VIA USB2.0 Driver" from the screen in step 2, it will display the screen as left.



4. Back to the main screen, click the "Tool Page" button, you can choose the software to install.

5. If you click the "Browse CD" button from the screen in step 1, you can browse all the files in the Driver CD.

6. Click "Exit" button to exit the program.

## **KX600A Series**

### **Installing SATA RAID Driver during Windows® 2000/XP Installation.**

Follow the instructions in this section if you are performing a new installation of Windows® 2000/XP and you wish to boot from a drive attached to the SATA connector.

1. Copy the “VIA Serial ATA Driver” from the bundle CD Driver to a floppy disk. 【CD File Location Path => D: \ Driver \ SATA\ 3.10D\ Driver Disk\ copy the TXSETUP.OEM file and the RAID folder.】
2. Power off the system. Connect the SATA hard disk to one of the SATA connectors. Power up the system.
3. Place your Windows® 2000/XP CD into the CD-ROM/DVD drive. When the “Windows Setup” screen displays, press “F6”.
4. Press 's' when setup asks if you want to specify an additional device. Insert the floppy disk which includes the “VIA Serial ATA Driver” into the floppy drive. Press 'Enter' and select the appropriate OS device driver.
5. Press 'Enter' again to continue the setup process.
6. Follow the setup instructions and select your choice for partition and file system.
7. After setup examines your disks, it will copy files to the Windows® 2000/ XP installation folders and restart the system. After the system is rebooted the setup program will continue with the installation all the way to completion.
8. Wait until Windows® 2000/ XP finishes installing devices, regional settings, networking settings, components, and the final set of tasks. Reboot the system if you are asked to do so.

## Chapter 4: Troubleshooting

### Problem 1:

No power to the system. Power light does not illuminate. Fan inside power supply does not turn on. Indicator lights on keyboard are not lit.

Causes:

1. Power cable is unplugged.
2. Defective power cable.
3. Power supply failure.
4. Faulty wall outlet; circuit breaker or fuse blown.

Solutions:

1. Make sure power cable is securely plugged in.
2. Replace cable.
3. Contact technical support.
4. Use different socket, repair outlet, reset circuit breaker or replace fuse.

### Problem 2:

System inoperative. Keyboard lights are on, power indicator lights are lit, hard drive is active but system seems “hung”

Causes: Memory DIMM is partially dislodged from the slot on the mainboard.

Solutions:

1. Power Down
2. Using even pressure on both ends of the DIMM, press down firmly until the module snaps into place.

### Problem 3:

System does not boot from the hard disk drive but can be booted from the CD-ROM drive.

Causes:

1. Connector between hard drive and system board unplugged.
2. Damaged hard disk or disk controller.
3. Hard disk directory or FAT is corrupted.

Solutions:

1. Check the cable running from the disk to the disk controller board. Make sure both ends are securely attached. Check the drive type in the standard CMOS setup.
2. Contact technical support.
3. Backing up the hard drive is extremely important. Make sure you periodically perform backups to avoid untimely disk crashes.



## KX600A Series

### **Problem 4:**

System only boots from the CD-ROM. The hard disk can be read and applications can be used but booting from the hard disk is impossible.

Causes: Hard Disk boot sector has been corrupted.

Solutions: Back up data and applications files. Reformat the hard drive. Re-install applications and data using backup disks.

### **Problem 5:**

Error message reading “SECTOR NOT FOUND” displays and the system does not allow certain data to be accessed.

Causes: There are many reasons for this such as virus intrusion or disk failure.

Solutions: Back up any salvageable data. Then performs low level format, partition, and then a high level format the hard drive. Re-install all saved data when completed.

### **Problem 6:**

Screen message says “Invalid Configuration” or “CMOS Failure.”

Causes: Incorrect information entered into the BIOS setup program.

Solutions: Review system’s equipment. Reconfigure the system.

### **Problem 7:**

The Screen is blank.

Causes: No power to monitor.

Solutions: Check the power connectors to the monitor and to the system.

### **Problem 8:**

Blank screen.

Causes:

1. Memory problem.
2. Computer virus.

Solutions:

1. Reboot computer. Reinstall memory. Make sure that all memory modules are securely installed.
2. Use anti-virus programs to detect and clean viruses.

### **Problem 9:**

Screen goes blank periodically.

Causes: Screen saver is enabled.

Solutions: Disable screen saver.



## **KX600A Series**

### **Problem 10:**

Keyboard failure.

Causes: Keyboard is disconnected.

Solutions: Reconnect keyboard. Replace keyboard if you continue to experience problems.

### **Problem 11:**

No color on screen.

Causes:

1. Faulty Monitor.
2. CMOS incorrectly set up.

Solutions:

1. If possible, connect monitor to another system. If no color appears, replace monitor.
2. Call technical support.

### **Problem 12:**

The screen displays "C: drive failure."

Causes: Hard drive cable not connected properly.

Solutions: Check hard drive cable.

### **Problem 13:**

Cannot boot the system after installing a second hard drive.

Causes:

1. Master/slave jumpers not set correctly.
2. Hard drives are not compatible / different manufacturers.

Solutions:

1. Set master/slave jumpers correctly.
2. Run SETUP program and select the correct drive types. Call drive manufacturers for possible compatibility problems with other drives.

### **Problem 14:**

Missing operating system on hard drive.

Causes: CMOS setup has been changed.

Solutions: Run setup and select the correct drive type.

### **Problem 15:**

Certain keys do not function.

Causes: Keys jammed or defective.

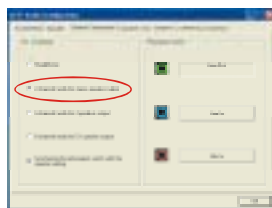
Solutions: Replace keyboard.



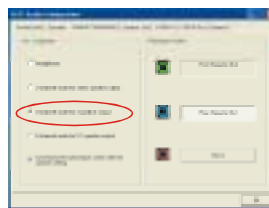
## **Appendix I: Super 5.1 Channel Setup**

1. After into the system, click the audio icon  from the Windows screen.
2. Click Speaker Configuration button, you can see the screen like the picture below.
3. You can choice 2, 4 or 6 channels by your speakers.

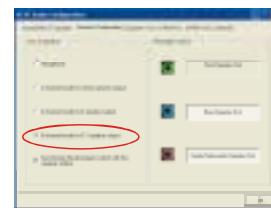
### **2 Channels**



### **4 Channels**



### **6 Channels**




### **Super 5.1 Channel Audio Effect**

This mainboard comes with an ALC655 Codec which supports high quality 5.1 Channel audio effects. With ALC655, you are able to use standard line-jacks for surround audio output without connecting to any auxiliary external modules. To use this function, you have to install the audio driver in the bonus Pack CD as well as an audio application supporting 5.1 Channel audio effects. See the audio Port Connectors in the Hardware Installation section for a description of the output connectors.

### **Speaker Test**

Make sure the cable is firmly into the connector.

1. Click the audio icon  from the Windows screen.
2. Click Speaker Test button, you can see the screen like the pictures below.
3. Select the speaker which you want to test by clicking on it.

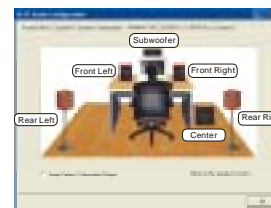
### **2 Channels**



### **4 Channels**



### **6 Channels**



## **Appendix II: SATA RAID 0/1 Setup**

### **Introduction to RAID (Redundant Array of Independent Disks)**

RAID technology is a sophisticated disk management system that manages multiple disk drives, enhancing I/O performance and providing redundancy in order to prevent the loss of data in case any of the individual disks fail. The SATA RAID facility on this board provides RAID 0 (striped), RAID 1 (mirrored) and RAID SPAN.

#### **Disk Striping (RAID 0)**

Striping is a performance-oriented, non-redundant disk storage technology. With RAID striping, multiple disks are used to form a larger virtual disk. Data is then striped or mapped across all the physical disks. In this way modern SATA and ATA bus mastering technology can be used to perform multiple I/O operations in parallel, enhancing performance. While Striping is discussed as a RAID Set type, it actually does not provide fault tolerance.

#### **Disk Mirroring (RAID 1)**

With Disk Mirroring there is a redundant disk that mirrors the main disk. Data that is written to the main disk is also written to the redundant disk. This redundancy provides fault tolerant protection from a single disk failure. If a read/write failure occurs on one drive, the system can still read and write data using the other drive.

#### **RAID SPAN**

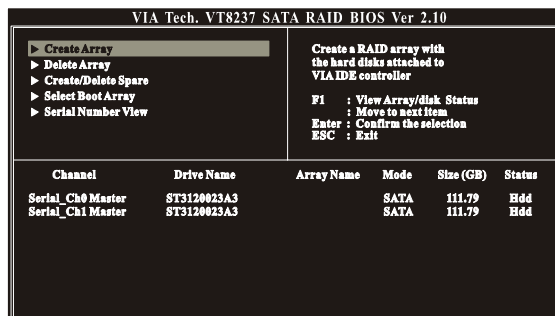
RAID SPAN is not one of the standard RAID levels. It is however considered a JBOD (Just Bundle Of Disks) configuration which simply uses multiple disks to form a larger virtual disk without any other specialized disk management functionality.

### **RAID BIOS Configuration**

When the system boots up during the POST (Power-On Self Test), the user will be given an opportunity to enter the "VIA RAID BIOS Configuration" utility. Wait for the following prompt:

*Press <Tab> Key into User Window*

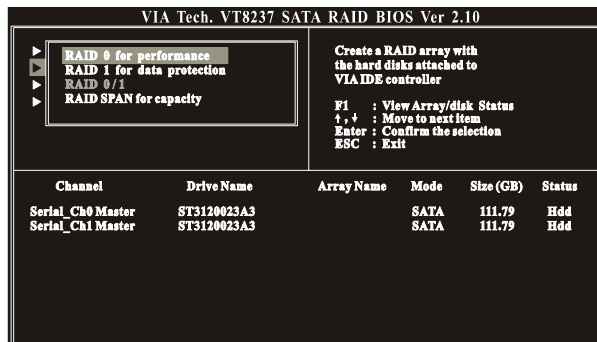
Then press the "Tab" key to enter the VIA RAID BIOS Configuration utility. The VIA RAID BIOS screen will display as shown below.





## Create Array

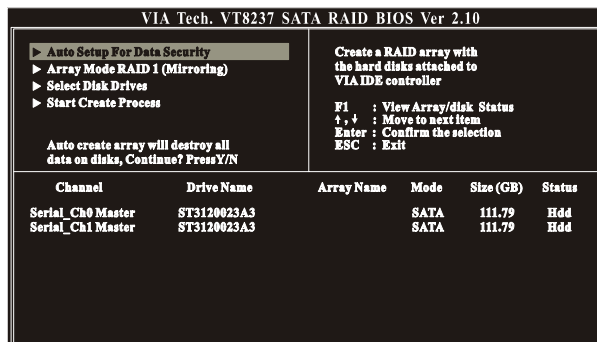
- The “Create Array” option will allow you to initialize a RAID array. Choose the “Create Array” on the main screen and press <Enter>. The screen below will display. According to your needs, select “RAID 0 for performance” (striping), “RAID 1 for data protection” (mirroring) or “RAID SPAN for capacity” (JBOD). Then press <Enter>.



### Attention

The “Channel”, “Drive Name”, “Mode”, “Size (GB)”, located at the bottom portion of the screen above, reflect the devices that are currently installed on the SATA connectors. The example information above may therefore differ with the information that displays on your screen.

- Next, choose the “Auto Setup for Data Security” option and press <Enter>. The screen will display a confirmation message as shown below. Press <Y> to continue with the creation of the new array.



### Attention

For RAID 1 (Mirrored Arrays), you can manually select the “source device” instead of having the system determine it for you. After step 1, select the “Select Disk Drives” to manually select the “source device”. Then choose the “Start Create Process” and press <Enter> to complete the RAID 1 array creation.

## KX600A Series

- After the array has been successfully created, one of the screens will display as shown below according to the type of array you created.

### RAID 1 mode

VIA Tech. VT8237 SATA RAID BIOS Ver 2.10					
<ul style="list-style-type: none"> <li>▶ Auto Setup For Data Security</li> <li>▶ Array Mode RAID 1 (Mirroring)</li> <li>▶ Select Disk Drives</li> <li>▶ Start Create Process</li> </ul>		Create a RAID array with the hard disks attached to VIA IDE controller  F1 : View Array/disk Status ↑, ↓ : Move to next item Enter : Confirm the selection ESC : Exit			
Channel	Drive Name	Array Name	Mode	Size (GB)	Status
Serial_C0 Master	ST3120023A3	ARRAY 0	SATA	111.79	Source
Serial_C1 Master	ST3120023A3	ARRAY 0	SATA	111.79	Mirror

### RAID 0 mode

VIA Tech. VT8237 SATA RAID BIOS Ver 2.10					
<ul style="list-style-type: none"> <li>▶ Auto Setup For Data Security</li> <li>▶ Array Mode RAID 0 (Striping)</li> <li>▶ Select Disk Drives</li> <li>▶ Block Size 64K</li> <li>▶ Start Create Process</li> </ul>		Create a RAID array with the hard disks attached to VIA IDE controller  F1 : View Array/disk Status ↑, ↓ : Move to next item Enter : Confirm the selection ESC : Exit			
Channel	Drive Name	Array Name	Mode	Size (GB)	Status
Serial_C0 Master	ST3120023A3	ARRAY 0	SATA	111.79	Stripe 0
Serial_C1 Master	ST3120023A3	ARRAY 0	SATA	111.79	Stripe 1

### RAID SPAN mode

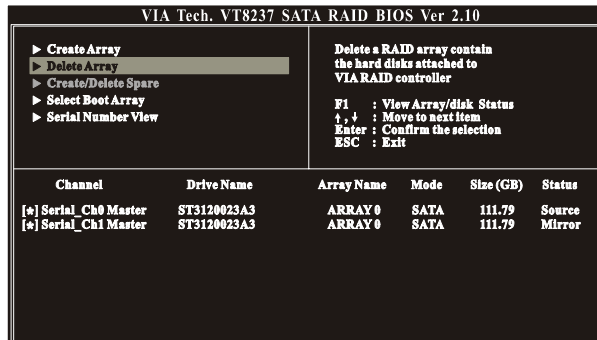
VIA Tech. VT8237 SATA RAID BIOS Ver 2.10					
<ul style="list-style-type: none"> <li>▶ Auto Setup For Data Security</li> <li>▶ Array Mode SPAN (JBOD)</li> <li>▶ Select Disk Drives</li> <li>▶ Start Create Process</li> <li>▶ Expand Span (JBOD) Array</li> </ul>		Create a RAID array with the hard disks attached to VIA IDE controller  F1 : View Array/disk Status ↑, ↓ : Move to next item Enter : Confirm the selection ESC : Exit			
Channel	Drive Name	Array Name	Mode	Size (GB)	Status
Serial_C0 Master	ST3120023A3	ARRAY 0	SATA	111.79	Span 0
Serial_C1 Master	ST3120023A3	ARRAY 0	SATA	111.79	Span 1



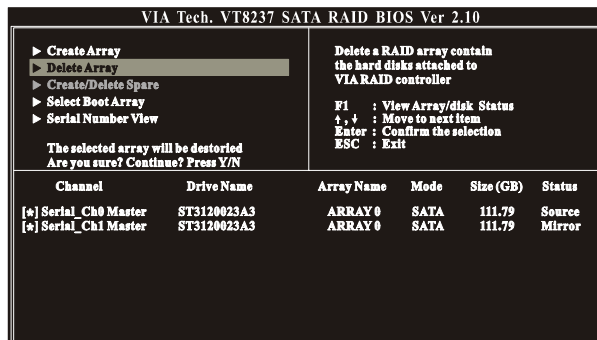
The RAID 0 screen (above) contains the option, “Block Size 64K”. With this option you can manually select the block size for your array. However, we recommend that you to select the “64K” for optimal performance.

**Delete Array**

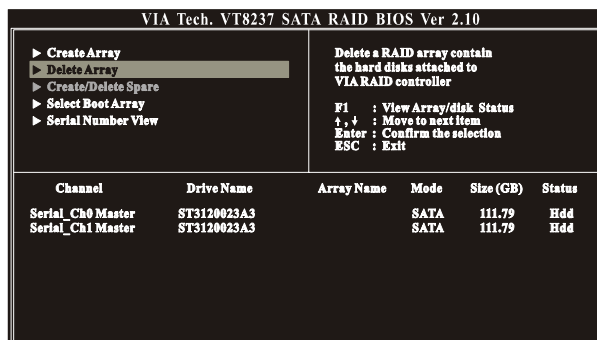
1. You can delete an existing array with the “Delete Array” option on the main screen. Choose the “Delete Array” option and press <Enter>. Then press the <Enter> key once again and the system will mark all the existing SATA devices with an asterisk (as shown below in the bottom section). (Note that the example information below may differ slightly depending on the RAID type you are configuring.)



2. Press <Enter>. A warning/confirmation message will display (as shown below). Press <Y> to confirm.

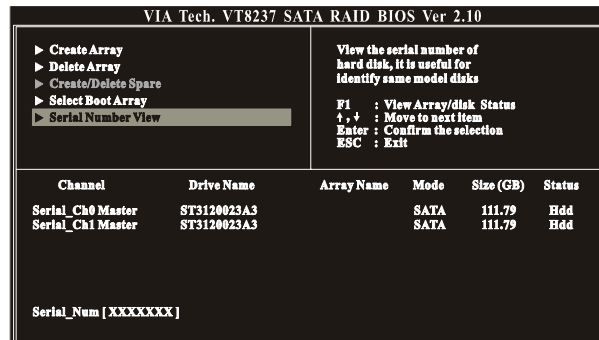


3. After the array is successfully deleted, the screen will display as shown below.



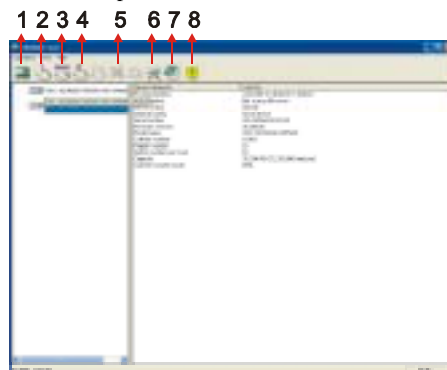
## Serial Number View

You can choose the “Serial Number View” to view the serial number of the serial ATA device. The serial number is assigned to the device by the manufacturer.



## VIA RAID Tool (VIA Raid Tool icon )

The VIA RAID Tool allows the user to configure and monitor RAID arrays from the Windows environment. After booting your operating system, click the “VIA RAID Tool” icon from the Windows desktop. The Screen below will display. You can simply click on one of the toolbar buttons on the menu bar to execute their respective functions.



- Toolbar Button 1: View the controller status.
- Toolbar Button 2: Create a array with RAID 1.
- Toolbar Button 3: Create a array with SPAN.
- Toolbar Button 4: Create a array with RAID 0.
- Toolbar Button 5: Delete the array that you created before.
- Toolbar Button 6: View the devices status.
- Toolbar Button 7: View the event log.
- Toolbar Button 8: Help topics.