

This publication, including all photographs, illustrations and software, is protected under international copyright laws, with all rights reserved. Neither this manual, nor any of the material contained herein, may be reproduced without written consent of the author.

The information in this document is subject to change without notice. The manufacturer makes no representations or warranties with respect to the contents hereof and specifically disclaims any implied warranties of merchantability or fitness for any particular purpose. Further, the manufacturer reserves the right to revise this publication and to make changes from time to time in the content hereof without obligation of the manufacturer to notify any person of such revision or changes.

## Trademarks

IBM, VGA, and PS/2 are registered trademarks of International Business Machines.

Intel, Pentium/II/III, Pentium 4, Celeron and MMX are registered trademarks of Intel Corporation.

Microsoft, MS-DOS and Windows 98/ME/NT/2000/XP are registered trademarks of Microsoft Corporation.

AMI is a registered trademark of American Megatrends Inc.

SiS is a trademark of Silicon Integrated System Corporation.

Other brands or product names in this manual are trademarks or the properties of their respective owners and are acknowledged.

**Copyright © 2005**  
**All Rights Reserved**  
**KVM266PM-U/KVM400M-U Series**  
**V3.0B**  
**January 2005**

## Table of Contents

|   |           |
|---|-----------|
| <b>Trademark .....</b>                              | <b>I</b>  |
| Static Electricity Precautions .....                | III       |
| Pre-Installation Inspection .....                   | III       |
| <b>Chapter 1: Introduction .....</b>                | <b>1</b>  |
| Key Features .....                                  | 2         |
| Package Contents .....                              | 5         |
| <b>Chapter 2: Motherboard Installation .....</b>    | <b>6</b>  |
| Motherboard Components .....                        | 7         |
| I/O Ports .....                                     | 8         |
| Installing the Processor .....                      | 9         |
| Installing Memory Modules .....                     | 10        |
| Jumper Settings .....                               | 11        |
| Install the Motherboard .....                       | 12        |
| Connecting Optional Devices .....                   | 13        |
| Install Other Devices .....                         | 15        |
| Expansion Slots .....                               | 18        |
| <b>Chapter 3: BIOS Setup Utility .....</b>          | <b>20</b> |
| Introduction .....                                  | 20        |
| Running the Setup Utility .....                     | 21        |
| Standard CMOS Setup Page .....                      | 22        |
| Advanced Setup Page .....                           | 23        |
| Power Management Setup Page .....                   | 25        |
| PCI/Plug and Play Setup Page .....                  | 27        |
| Load Optimal Settings .....                         | 28        |
| Load Best Performance Settings .....                | 28        |
| Features Setup Page .....                           | 28        |
| CPU PnP Setup Page .....                            | 30        |
| Hardware Monitor Page .....                         | 31        |
| Change Password .....                               | 31        |
| Exit .....  | 32        |
| <b>Chapter 4: Software &amp; Applications .....</b> | <b>33</b> |
| Introduction .....                                  | 33        |
| Installing Support Software .....                   | 34        |
| Bundled Software Installation .....                 | 36        |

## Static Electricity Precautions

Static electricity could damage components on this motherboard. Take the following precautions while unpacking this motherboard and installing it in a system.

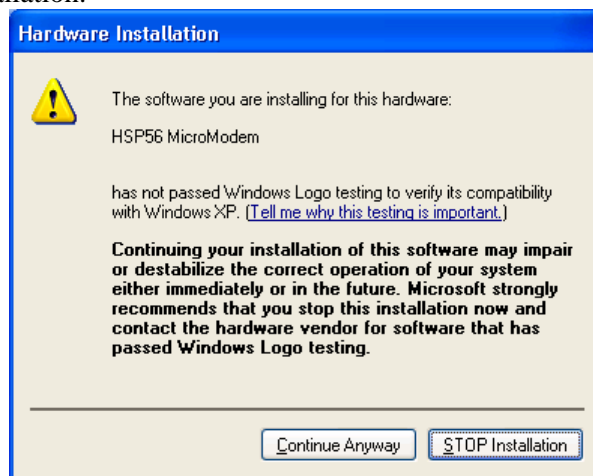
1. Don't take this motherboard and components out of their original static-proof package until you are ready to install them.
2. While installing, please wear a grounded wrist strap if possible. If you don't have a wrist strap, discharge static electricity by touching the bare metal of the system chassis.
3. Carefully hold this motherboard by its edges. Do not touch those components unless it is absolutely necessary. Put this motherboard on the top of static-protection package with component side facing up while installing.

## Pre-Installation Inspection

1. Inspect this motherboard whether there are any damages to components and connectors on the board.
2. If you suspect this motherboard has been damaged, do not connect power to the system. Contact your motherboard vendor about those damages.

## Notice:

1. Owing to Microsoft's certifying schedule is various to every supplier, we might have some drivers not certified yet by Microsoft. Therefore, it might happen under Windows XP that a dialogue box (shown as below) pop out warning you this software has not passed Windows Logo testing to verify its compatibility with Windows XP. Please rest assured that our RD department has already tested and verified these drivers. Just click the "Continue Anyway" button and go ahead the installation.



## 2. USB 2.0 Driver Limitations:

2-1. The USB 2.0 driver only supports Windows XP and Windows 2000.

2-2. If you connect a USB 2.0 hub to the root hub, plugging USB devices into this hub, the system might not successfully execute certain USB devices' connection because it could not recognize these devices.

## Chapter 1

### Introduction

---

This motherboard has a **Socket-462** for the **AMD Athlon XP/ Athlon/Duron** processors. You can install any of these processors on this motherboard. This motherboard supports front-side bus speed of **400(KM400A only)/333/266** MHz.

This motherboard integrates the **VIA KM400A/KM400 and KM266Pro** Northbridge along with **VT8235/8237** Southbridge chipsets that supports built-in **AC'97 Codec**, **2 DDR** modules up to 2GB system memory. This motherboard has one **CNR** (Communications and Networking Riser) slot to support Audio and Modem application, three PCI slots and the built-in **10BaseT/ 100BaseTX Network Interface** (optional).

There is a full set of I/O ports including two PS/2 ports for mouse and keyboard and audio jacks for microphone, line-in, line-out; one serial port, one VGA port, one LAN port (optional) and one parallel port. This motherboard supports four back-panel USB 2.0 ports. There will be one extra USB header USB2 making two extra USB 2.0 ports by connecting the Extended Module to the motherboard.

This motherboard is a **Micro ATX size** motherboard that has power connectors for an ATX power supply.

## Key Features

This motherboard has the following key features:

### Socket-462 Processor Support

- ◆ Supports AMD **Athlon XP/Athlon/Duron** processors
- ◆ Supports **400 MHz** Front-Side Bus (with NB **KM400A**) or 333/266 MHz Front-Side Bus

### Chipset

There are **VIA KM400A/KM400/KM266Pro Northbridge** and **VT8235/8237 Southbridge** in this chipset in accordance with an innovative and scalable architecture with proven reliability and performance.

| Northbridge | Front-Side Bus  | DDR     | AGP |
|-------------|-----------------|---------|-----|
| KM400A      | 400/333/266 MHz | 400 MHz | 8x  |
| KM400       | 333/266 MHz     | 333 MHz | 8x  |
| KM266Pro    | 333/266 MHz     | 333 MHz | 4x  |

### Memory Support

- ◆ Two 184-pin DIMM sockets for DDR memory module
- ◆ Support DDR **400 (KM400A only)**/333/266 memory
- ◆ Maximum installed memory is 2GB

### Expansion Slots

- ◆ One 8xAGP slot for AGP 3.0-compliant interface (**with NB KM400A and KM400**)
- ◆ One CNR (Communications and Networking Riser) slot to insert special riser cards with Audio/Modem functionality
- ◆ Three 32-bit PCI slots for PCI 2.2-compliant bus interface

### Onboard IDE Channels

- ◆ Primary and Secondary PCI IDE channels
- ◆ Support for PIO (programmable input/output) modes
- ◆ Support for Multiword DMA modes
- ◆ Support for Bus Mastering and Ultra DMA ATA **133/100/66** modes

### **AC'97 Audio Codec**

- ◆ 6-channel and compliant with AC'97 2.3 specification
- ◆ Three Audio Jacks – Line-Out, Line-In and Microphone-In
- ◆ Sound Blaster, Sound Blaster Pro Compatible
- ◆ Advanced power management support

### **Onboard I/O Ports**

The motherboard has a full set of I/O ports and connectors:

- ◆ Two PS/2 ports for mouse and keyboard
- ◆ One serial port
- ◆ One parallel port
- ◆ One VGA port
- ◆ One LAN port (optional)
- ◆ Four back-panel USB 2.0 ports and onboard header USB2 making two extra USB 2.0 ports by connecting the Extended Module to the motherboard
- ◆ Audio jacks for microphone, line-in and line-out

### **Built-in Ethernet LAN (optional)**

- ◆ **10Base-TX/100Base-T Physical Layer Solution**
- ◆ Dual Speed – 100/10 Mbps
- ◆ MII Interface to Ethernet Controller/Configuration & Status
- ◆ Auto Negotiation: 10/100, Full/Half Duplex
- ◆ Meet All Applicable IEEE802.3, 10Base-T and 100Base-TX Standards

### **USB 2.0**

- ◆ Compliant with Universal Serial Bus Specification Revision 2.0
- ◆ Compliant with Intel's Enhanced Host Controller Interface Specification Revision 1.0
- ◆ Compliant with Universal Host Controller Interface Specification Revision 1.1
- ◆ PCI multi-function device consists of two **UHCI Host Controller** cores for full-/low-speed signaling and one **EHCI Host Controller** core for high-speed signaling

- ◆ Root hub consists 4 downstream facing ports with integrated physical layer transceivers shared by **UHCI** and **EHCI** Host Controller, up to six functional ports
- ◆ Support PCI-Bus Power Management Interface Specification release 1.1
- ◆ Legacy support for all downstream facing ports

### **BIOS Firmware**

This motherboard uses AMI BIOS that enables users to configure many system features including the following:

- ◆ Power management
- ◆ Wake-up alarms
- ◆ CPU parameters and memory timing
- ◆ CPU and memory timing

The firmware can also be used to set parameters for different processor clock speeds.

### **Dimensions**

- ◆ Micro ATX form factor 244 x 200 mm



## Package Contents

Your motherboard package contains the following items:

- The motherboard
- The User's Manual
- One diskette drive ribbon cable (optional)
- One IDE drive ribbon cable
- Software support CD

### **Optional Accessories**

You can purchase the following optional accessories for this motherboard.

- Extended USB module
- CNR v.90 56K Fax/Modem card
- Card Reader (You can buy your own Card Reader from the third party, but please contact your local Card Reader vendor on any issues of the specification and compatibility.)

## Chapter 2

### Motherboard Installation

---

To install this motherboard in a system, please follow the instructions in this chapter:

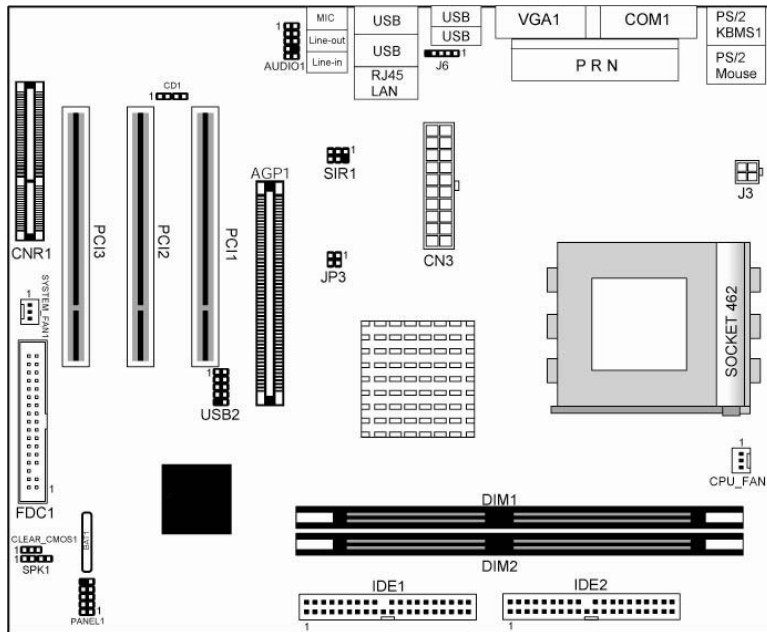
- ❑ Identify the motherboard components
- ❑ Install a CPU
- ❑ Install one or more system memory modules
- ❑ Verify that all jumpers or switches are set correctly
- ❑ Install the motherboard in a system chassis (case)
- ❑ Connect any extension brackets or cables to headers/connectors on the motherboard
- ❑ Install any peripheral devices and make the appropriate connections to headers/connectors on the motherboard

**Note:**

1. Before installing this motherboard, make sure jumper CLEAR\_CMOS1 is under Normal setting. See this chapter for information about locating CLEAR\_CMOS1 and the setting options.
2. Never connect power to the system during installation; otherwise, it may damage the motherboard.

## Motherboard Components

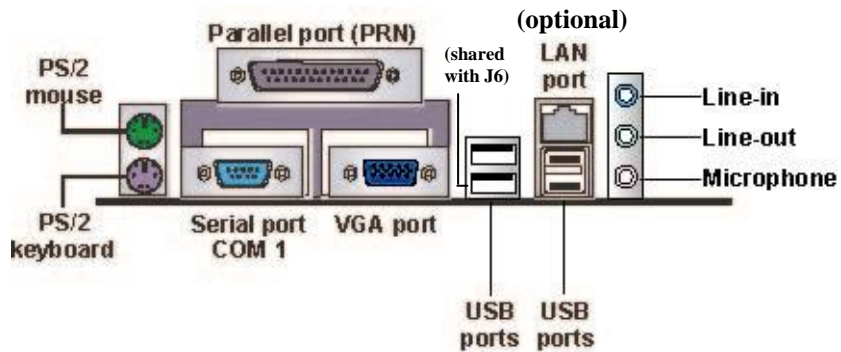
Identify major components on the motherboard via this diagram underneath.



**Note:** Any jumpers on your motherboard not appearing in the illustration above are for testing only.

## I/O Ports

The illustration below shows a side view of the built-in I/O ports on the motherboard.



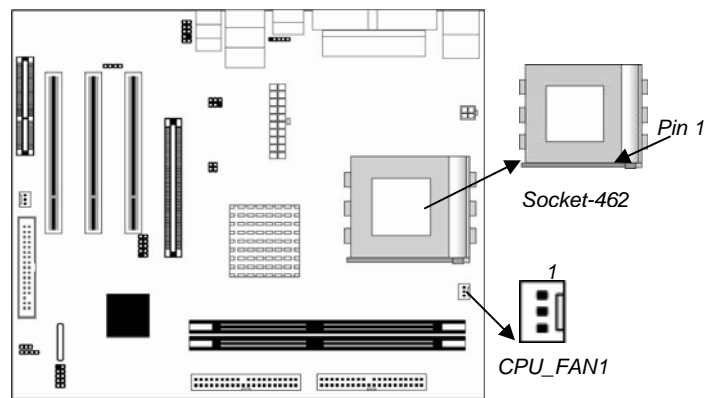
|                            |   |
|----------------------------|---|
| <b>PS/2 Mouse</b>          | Use the upper PS/2 port to connect a PS/2 pointing device.  |
| <b>PS/2 Keyboard</b>       | Use the lower PS/2 port to connect a PS/2 keyboard.   |
| <b>Parallel Port (PRN)</b> | Use the Parallel port (PRN) to connect printers or other parallel communications devices.   |
| <b>Serial Port COM1</b>    | Use the COM port to connect serial devices such as mice or fax/modems. COM1 is identified by the system as COM1.  |
| <b>VGA Port</b>            | Use the VGA port to connect VGA devices.  |
| <b>LAN Port (optional)</b> | Connect an RJ-45 jack to the LAN port to connect your computer to the Network.  |
| <b>USB Ports</b>           | Use the USB ports to connect USB devices.<br><i>Note: The lower USB port located beside the VGA port is shared with the J6 header.</i>  |
| <b>Audio Ports</b>         | Use the three audio ports to connect audio devices. The first jack is for stereo Line-In signal. The second jack is for stereo Line-Out signal. The third jack is for Microphone. |

## Installing the Processor

This motherboard has a Socket 462 processor socket. When choosing a processor, consider the performance requirements of the system. Performance is based on the processor design, the clock speed and system bus frequency of the processor, and the quantity of internal cache memory and external cache memory.

### CPU Installation Procedure

Follow these instructions to install the CPU:

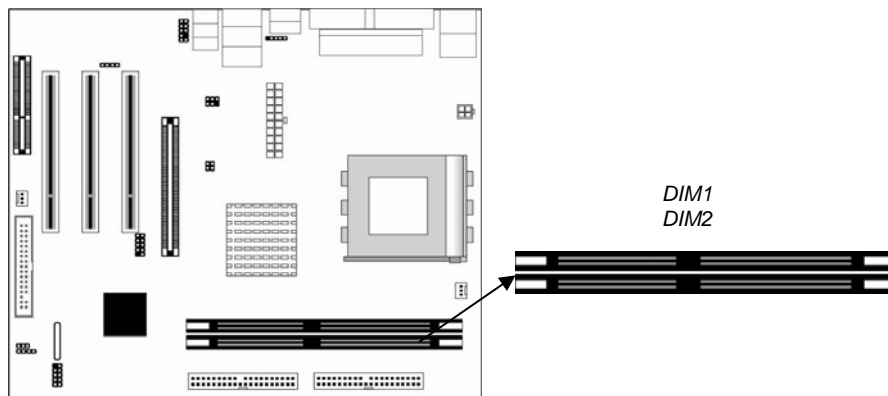


1. Unhook the locking lever of the CPU socket. Pull the locking lever away from the socket and raising it to the upright position.
2. Match the pin1 corner marked as the beveled edge on the CPU with the pin1 corner on the socket. Insert the CPU into the socket. Do not use force.
3. Push the locking lever down and hook it under the latch on the edge of socket.
4. Apply thermal grease to the top of the CPU.
5. Install the cooling fan/heatsink unit onto the CPU, and secure them all onto the socket base.
6. Plug the CPU fan power cable into the CPU fan connector (CPU\_FAN1) on the motherboard.

## Installing Memory Modules

This motherboard accommodates two 184-pin 2.5V unbuffered Double Data Rate SDRAM (DDR SDRAM) Dual Inline Memory Module (DIMM) sockets, and supports up to 2.0 GB.

DDR SDRAM is a type of SDRAM that supports data transfers on both edges of each clock cycle (the rising and falling edges), effectively doubling the memory chip's data throughput. DDR DIMMs can synchronously work with 400/333/266 MHz memory and provide 3.2 GB/s, 2.7 GB/s, and 2.1 GB/s data transfer rate.



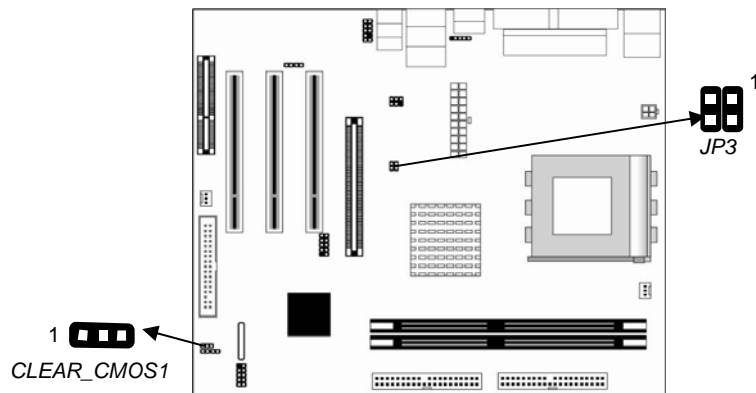
### Installation Procedure

These modules can be installed with up to 2 GB system memory. Follow these steps to install the memory module.

1. Push down the latches on both sides of the DIMM socket.
2. Align the memory module with the socket. There is a notch on the DIMM socket that you can install the DIMM module in the correct direction. Match the cutout on the DIMM module with the notch on the DIMM socket.
3. Install the DIMM module into the socket and press it firmly down until it is seated correctly. The socket latches are levered upwards and latch on to the edges of the DIMM.
4. Install any remaining DIMM modules.

## Jumper Settings

Using a jumper cap to connect two pins is **SHORT**, removing it from these pins, **OPEN**.



### **CLEAR\_CMOS1: Clear CMOS Jumper**

Use this jumper to clear the contents of the CMOS memory. You may need to clear the CMOS memory if the settings in the Setup Utility are incorrect and prevent your motherboard from operating. To clear the CMOS memory, disconnect all the power cables from the motherboard and then move the jumper cap into the **CLEAR** setting for a few seconds.

| Function   | Jumper Setting |
|------------|----------------|
| Clear CMOS | Short Pins 2-3 |
| Normal     | Short Pins 1-2 |

### JP3: CPU Clock Selector

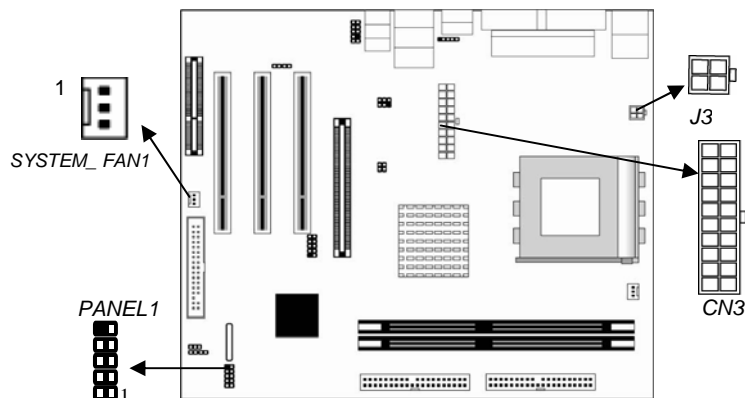
This jumper selects the processor clock frequency.

| CPU Clock            | Pins 1-2 | Pins 3-4 |
|----------------------|----------|----------|
| 133 MHz              | Off      | Off      |
| 166 MHz              | Off      | On       |
| 100 MHz              | On       | Off      |
| 200 MHz(KM400A Only) | On       | On       |

### Install the Motherboard

Install the motherboard in a system chassis (case). The board is a Micro ATX size motherboard. You can install this motherboard in an ATX case. Ensure your case has an I/O cover plate that matches the ports on this motherboard.

Install the motherboard in a case. Follow the instructions of the case manufacturer to use the hardware and internal mounting points on the chassis.



Connect the power connector from the power supply to the **CN3** connector on the motherboard. **J3** is the CPU Vcore power connector.

If there is a cooling fan installed in the system chassis, connect the cable from the cooling fan to the **SYSTEM\_FAN1** fan power connector on the motherboard.

Connect the case switches and indicator LEDs to the **PANEL1** header.

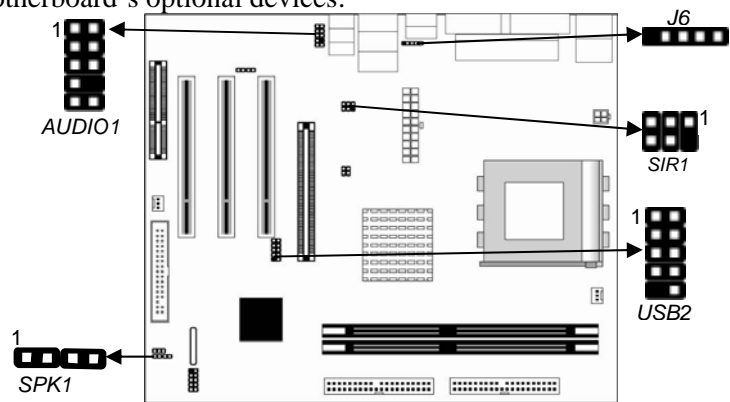


Here is a list of the PANEL1 pin assignments.

| Pin | Signal        | Pin | Signal:       |
|-----|---------------|-----|---------------|
| 1   | HD_LED_P(+)   | 2   | FP PWR/SLP(+) |
| 3   | HD_LED_N(-)   | 4   | FP PWR/SLP(-) |
| 5   | RESET_SW_N(-) | 6   | POWER_SW_P(+) |
| 7   | RESET_SW_P(+) | 8   | POWER_SW_N(-) |
| 9   | RSVD_DNU      | 10  | KEY           |

## Connecting Optional Devices

Refer to the following for information on connecting the motherboard's optional devices:



### SPK1: Speaker Header

Connect the cable from the PC speaker to the **SPK1** header on the motherboard.

| Pin | Signal | Pin | Signal |
|-----|--------|-----|--------|
| 1   | SPKR   | 2   | NC     |
| 3   | GND    | 4   | +5V    |

### AUDIO1: Front Panel Audio Header

This header allows the user to install auxiliary front-oriented microphone and line-out ports for easier access.

Here is a list of AUDIO1 header pin assignment.

| Pin | Signal       | Pin | Signal    |
|-----|--------------|-----|-----------|
| 1   | AUD_MIC      | 2   | AUD_GND   |
| 3   | AUD_MIC_BIAS | 4   | AUD_VCC   |
| 5   | AUD_FPOUT_R  | 6   | AUD_RET_R |
| 7   | HP_ON        | 8   | KEY       |
| 9   | AUD_FPOUT_L  | 10  | AUD_RET_L |

### USB2: Front Panel USB Header

The motherboard has USB ports installed on the rear edge I/O port array. Additionally, some computer cases have USB ports at the front of the case. If you have this kind of case, use auxiliary USB header USB2 to connect the front-mounted ports to the motherboard.

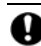
| Pin | Signal          | Pin | Signal          |
|-----|-----------------|-----|-----------------|
| 1   | VERG_FP_USBPWR0 | 2   | VERG_FP_USBPWR0 |
| 3   | USB_FP_P0(-)    | 4   | USB_FP_P1(-)    |
| 5   | USB_FP_P0(+)    | 6   | USB_FP_P1(+)    |
| 7   | GROUND          | 8   | GROUND          |
| 9   | KEY             | 10  | USB_FP_OC0      |

1. Locate the USB2 header on the motherboard.
2. Plug the bracket cable onto the USB2 header.
3. Remove a slot cover from one of the expansion slots on the system chassis. Install an extension bracket in the opening. Secure the extension bracket to the chassis with a screw.

### J6: USB Card Reader Header (optional)

This header is for connecting internal USB card reader. You can use a card reader to read or transfer files and digital images to your computer.

| Pin | Signal | Pin | Signal |
|-----|--------|-----|--------|
| 1   | VCC5   | 2   | USB-   |
| 3   | USB+   | 4   | GND    |
| 5   | KEY    |     |        |

 The J6 is shared with one of the USB ports of the I/O back panel. The USB port is located beside the VGA port headers. See "I/O Ports" for more information.

---

**!** Please check the pin assignment of the cable and the USB header on the motherboard. Make sure the pin assignment will match before plugging in. Any incorrect usage may cause unexpected damage to the system. The vendor won't be responsible for any incidental or consequential damage arising from the usage or misuse of the purchased product.

---

### SIR1: Infrared Header

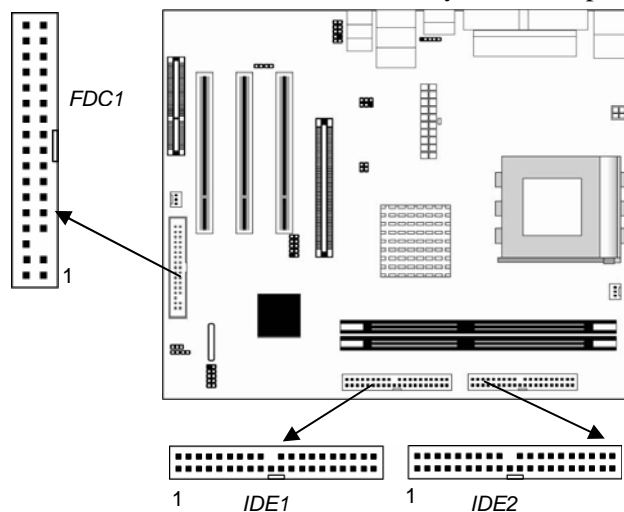
The infrared port allows the wireless exchange of information between your computer and similarly equipped devices such as printers, laptops, Personal Digital Assistants (PDAs), and other computers.

| Pin | Signal | Pin | Signal |
|-----|--------|-----|--------|
| 1   | NC     | 2   | KEY    |
| 3   | +5V    | 4   | GND    |
| 5   | IRTX   | 6   | IRRX   |

1. Locate the infrared port-SIR1 header on the motherboard.
2. If you are adding an infrared port, connect the ribbon cable from the port to the SIR1 header and then secure the port to an appropriate place in your system chassis.

### Install Other Devices

Install and connect other devices in the system as steps below.



### **Floppy Disk Drive**

The motherboard ships with a floppy disk drive cable that can support one or two drives. Drives can be 3.5" or 5.25" wide, with capacities of 360K, 720K, 1.2MB, 1.44MB, or 2.88MB.

Install your drives and connect power from the system power supply. Use the cable provided to connect the drives to the floppy disk drive connector **FDC1**.

### **IDE Devices**

IDE devices include hard disk drives, high-density diskette drives, and CD-ROM or DVD-ROM drives, among others.

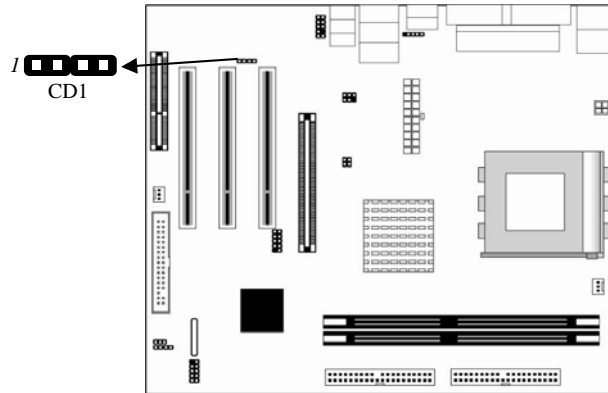
The motherboard ships with an IDE cable that can support one or two IDE devices. If you connect two devices to a single cable, you must configure one of the drives as Master and one of the drives as Slave. The documentation of the IDE device will tell you how to configure the device as a Master or Slave device. The Master device connects to the end of the cable.

Install the device(s) and connect power from the system power supply. Use the cable provided to connect the device(s) to the Primary IDE channel connector **IDE1** on the motherboard.

If you want to install more IDE devices, you can purchase a second IDE cable and connect one or two devices to the Secondary IDE channel connector **IDE2** on the motherboard. If you have two devices on the cable, one must be Master and one must be Slave.

### Analog Audio Input Header

If you have installed a CD-ROM drive or DVD-ROM drive, you can connect the drive audio cable to the onboard sound system.

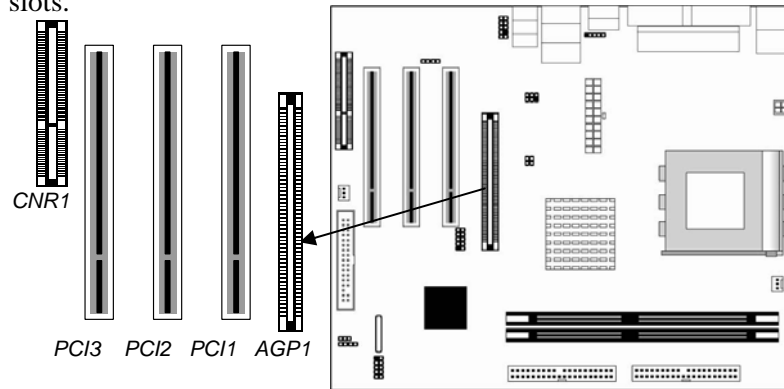


When you first start up your system, the BIOS should automatically detect your CD-ROM/DVD drive. If it doesn't, enter the Setup Utility and configure the CD-ROM/DVD drive that you have installed. On the motherboard, locate the 4-pin header **CD1**.

| Pin | Signal  |
|-----|---------|
| 1   | CD IN L |
| 2   | GND     |
| 3   | GND     |
| 4   | CD IN R |

## Expansion Slots

This motherboard has one AGP, one CNR and three 32-bit PCI slots.



Follow the steps below to install an AGP/CNR/PCI expansion card.

1. Locate the AGP, PCI or CNR slot on the motherboard.
2. Remove the slot cover from the system chassis.
3. Insert the expansion card edge connector into the slot and press it firmly down until fully inserted.
4. Secure the expansion card bracket in the system chassis with a screw.

### **PCI (Peripheral Components Interconnect) Slots**

You can install the 32-bit PCI interface expansion cards in the slots.

### **AGP (Accelerated Graphics Port) Slot**

You can install a graphics adapter supporting 8xAGP specification in the AGP slot. This slot has one 8xAGP edge connector.  
(NB KM266Pro only support AGP 4x slot)

### **CNR (Communications Networking Riser) Slot**

The CNR (Communications Networking Riser) slot is an industry standard slot that allows for the installation of a special audio/modem riser card. Different territories have different regulations

regarding the specifications of a modem card. You can purchase an approved CNR card in your area and install it directly into the CNR slot.

## Chapter 3

# BIOS Setup Utility

---

### Introduction

The BIOS Setup Utility records settings and information about your computer such as the date and time, the kind of hardware installed, and various configuration settings. Your computer uses this information to initialize all the components when booting up and functions as the basis for coordination between system components.

If the Setup Utility configuration is incorrect, it may cause the system to malfunction. It can even stop your computer from booting properly. If this happens, you can use the clear CMOS jumper to clear the CMOS memory used to store the configuration information.

You can run the setup utility and manually make changes to the configuration. You might need to do this to configure some of the hardware that you install on or connect to the motherboard, such as the CPU, system memory, disk drives, etc.



## Running the Setup Utility

Each time your computer starts, before the operating system loads, a message appears on the screen that prompts you to “*Hit <DEL> if you want to run SETUP*”. When you see this message, press the **Delete** key and the Main menu page of the Setup Utility appears on your monitor.

AMIBIOS SIMPLE SETUP UTILITY – VERSION 1.21.13  
(C) 2000 American Megatrends, Inc. All Rights Reserved

|  |                  |
|--|------------------|
| Standard CMOS Setup  | Features Setup   |
| Advanced Setup   | CPU PnP Setup    |
| Power Management Setup   | Hardware Monitor |
| PCI / Plug and Play Setup  | Change Password  |
| Load Optimal Settings  | Exit             |
| Load Best Performance Settings   |                  |
| Esc : Quit    ↑ ↓ ← →: Select Item (Shift)F2 : Change Color    F5 : Old Values<br>F6 : Optimal values                      F7 : Best performance values    F10 : Save&Exit |                  |
| Standard CMOS setup for changing time, date, hard disk type, etc.  |                  |

You can use the cursor arrow keys to highlight any of the options on the main menu page. Press **Enter** to select the highlighted option. To leave the setup utility, press the **Escape** key. To cycle through the Setup Utility’s optional color schemes hold down the **Shift** key and press **F2**.

Some of the options on the main menu page lead to tables of items with installed values. In these pages, use the cursor arrow keys to highlight the items, and then use the **PgUp** and **PgDn** keys to cycle through the alternate values for each of the items. Other options on the main menu page lead to dialog boxes requiring you to answer Yes or No by hitting the **Y** or **N** keys.

If you have already made changes to the setup utility, press **F10** to save those changes and exit the utility. Press **F5** to reset the changes to the original values. Press **F6** to install the setup utility with a set of default values. Press **F7** to install the setup utility with a set of high-performance values.

## Standard CMOS Setup Page

This page sets up basic information such as the date, the time, the IDE devices, and the diskette drives. If you press the F3 key, the system will automatically detect and configure the hard disks on the IDE channels.

| AMIBIOS SETUP – STANDARD CMOS SETUP                    |                   |      |      |      |                     |     |          |          |          |            |
|--|-------------------|------|------|------|---------------------|-----|----------|----------|----------|------------|
| (C) 2000 American Megatrends, Inc. All Rights Reserved |                   |      |      |      |                     |     |          |          |          |            |
| Date (mm/dd/yyyy) : Tue May 25, 2004                   |                   |      |      |      |                     |     |          |          |          |            |
| Time (hh/mm/ss) : 18:27:41                             |                   |      |      |      |                     |     |          |          |          |            |
|  | Type              | Size | Cyln | Head | WPcom               | Sec | LBA Mode | BIk Mode | PIO Mode | 32Bit Mode |
|  | Pri Master : Auto |      |      |      |                     |     |          |          |          | On         |
|  | Pri Slave : Auto  |      |      |      |                     |     |          |          |          | On         |
|  | Sec Master : Auto |      |      |      |                     |     |          |          |          | On         |
|  | Sec Slave : Auto  |      |      |      |                     |     |          |          |          | On         |
| Floppy Drive A : 1.44 MB 3 1/2                         |                   |      |      |      |                     |     |          |          |          |            |
| Floppy Drive B : Not Installed                         |                   |      |      |      |                     |     |          |          |          |            |
| Month : Jan – Dec                                      |                   |      |      |      | ESC : Exit          |     |          |          |          |            |
| Day : 01 – 31  |                   |      |      |      | ↑↓ : Select Item    |     |          |          |          |            |
| Year : 1980 – 2099                                     |                   |      |      |      | PU/PD/+/- : Modify  |     |          |          |          |            |
|  |                   |      |      |      | (Shift)F2 : Color   |     |          |          |          |            |
|  |                   |      |      |      | F3 : Detect All HDD |     |          |          |          |            |

|                        |  |
|------------------------|--|
| <b>Date &amp; Time</b> | Use these items to set the system date and time  |
| <b>Pri Master</b>      | Use these items to configure devices connected to the Primary and Secondary IDE channels. To configure an IDE hard disk drive, choose <i>Auto</i> . If the <i>Auto</i> setting fails to find a hard disk drive, set it to <i>User</i> , and then fill in the hard disk characteristics (Size, Cyls, etc.) manually. If you have a CD-ROM drive, select the setting <i>CDROM</i> . If you have an ATAPI device with removable media (e.g. a ZIP drive or an LS-120) select <i>Floptical</i> . |
| <b>Pri Slave</b>       |  |
| <b>Sec Master</b>      |  |
| <b>Sec Slave</b>       |  |
| <b>Floppy Drive A</b>  | Use these items to set the size and capacity of the floppy diskette drive(s) installed in the system.  |
| <b>Floppy Drive B</b>  |  |

## Advanced Setup Page

This page sets up more advanced information about your system. Take care of this page with more caution. Any changes can affect the operation of your computer.

| AMIBIOS SETUP – ADVANCED SETUP                         |          |                                    |
|--|----------|------------------------------------|
| (C) 2000 American Megatrends, Inc. All Rights Reserved |          |                                    |
| Quick Boot   | Enabled  |                                    |
| 1 <sup>st</sup> Boot Device                            | IDE-0    |                                    |
| 2 <sup>nd</sup> Boot Device                            | Floppy   |                                    |
| 3 <sup>rd</sup> Boot Device                            | CD/DVD-0 |                                    |
| Try Other Boot Devices                                 | Yes      |                                    |
| S.M.A.R.T. for Hard Disks                              | Disabled |                                    |
| BootUp Num-Lock  | On       |                                    |
| Floppy Drive Swap                                      | Disabled |                                    |
| Floppy Drive Seek                                      | Disabled |                                    |
| Password Check   | Setup    |                                    |
| Boot To OS/2 > 64MB                                    | No       | ESC : Quit      ↑↓←→ : Select Item |
| L2 Cache   | Enabled  | F1 : Help      PU/PD/+- : Modify   |
| System BIOS Cacheable                                  | Enabled  | F5 : Old Values (Shift)F2 : Color  |
| Graphic Win Size                                       | 64MB     | F6 : Load Optimal Values           |
| SDRAM Timing by SPD                                    | Enabled  | F7 : Load Best Performance Values  |
| SDRAM CAS# Latency                                     | 2.5      |                                    |
| SDRAM Bank Interleave                                  | Disabled |                                    |
| Auto Detect DIMM/PCI Clk                               | Enabled  |                                    |
| Spread Spectrum  | Disabled |                                    |

|   |   |
|---|---|
| <b>Quick Boot</b>   | If you enable this item, the system starts up more quickly by elimination of some of the power on test routines.                                  |
| <b>1<sup>st</sup> Boot Device</b><br><b>2<sup>nd</sup> Boot Device</b><br><b>3<sup>rd</sup> Boot Device</b> | Use these items to determine the device order the computer uses to look for an operating system to load at start-up time.                         |
| <b>Try Other Boot Device</b>  | If you enable this item, the system will also search for other boot devices if it fails to find an operating system from the first two locations. |
| <b>S.M.A.R.T. for Hard Disks</b>  | Enable this item if any IDE hard disks support the S.M.A.R.T. (Self-Monitoring, Analysis and Reporting Technology) feature.                       |

|                               |   |
|-------------------------------|---|
| <b>BootUp Num-Lock</b>        | This item determines if the Num Lock key is active or inactive at system start-up time.   |
| <b>Floppy Drive Swap</b>      | If you have two diskette drives installed and you enable this item, drive A becomes drive B and drive B becomes drive A.  |
| <b>Floppy Drive Seek</b>      | If you enable this item, your system will check all floppy disk drives at start up. Disable this item unless you are using an old 360KB drive.  |
| <b>Password Check</b>         | If you have entered a password for the system, use this item to determine, if the password is required to enter the Setup Utility ( <i>Setup</i> ) or required both at start-up and to enter the Setup Utility ( <i>Always</i> ). |
| <b>Boot to OS/2 &gt; 64MB</b> | Enable this item if you are booting the OS/2 operating system and you have more than 64MB of system memory installed.   |
| <b>L2 Cache</b>               | Leave these items enabled since all the processors that can be installed on this board have internal L2 cache memory.   |
| <b>System BIOS Cacheable</b>  | If you enable this item, a segment of the system BIOS will be copied to main memory for faster execution.   |
| <b>Graphic Win Size</b>       | This item defines the size of aperture if you use a graphic adapter.  |
| <b>SDRAM Timing by SPD</b>    | This item enables or disables the SDRAM timing defined by the Serial Presence Detect electrical.  |

|                                 |  |
|---------------------------------|--|
| <b>SDRAM CAS# Latency</b>       | This item determines the operation of SDRAM memory CAS (column address strobe). It is recommended that you leave this item at the default value. The 2T setting requires faster memory that specifically supports this mode. |
| <b>SDRAM Bank Interleave</b>    | Enable this item to increase SDRAM memory speed. When enabled, separate memory banks are set for odd and even addresses, and upcoming byte of memory is accessible while refreshing the current byte.                        |
| <b>Auto detect DIMM/PCI Clk</b> | When this item is enabled, BIOS will disable the clock signal of free DIMM/PCI slots.  |
| <b>Spread Spectrum</b>          | If you enable spread spectrum, it can significantly reduce the EMI(Electro-Magnetic Interference) generated by the system.   |

## Power Management Setup Page

This page sets some of the parameters for system power management operation.

| AMIBIOS SETUP - POWER MANAGEMENT SETUP<br>(C) 2000 American Megatrends, Inc. All Rights Reserved |          |                                      |
|--|----------|--------------------------------------|
| ACPI Aware O/S   | Yes      |                                      |
| Power Management   | Enabled  |                                      |
| Suspend Time out   | Disabled |                                      |
| Resume On RTC Alarm  | Disabled |                                      |
| RTC Alarm Date   | 15       |                                      |
| RTC Alarm Hour   | 12       |                                      |
| RTC Alarm Minute   | 30       | ESC : Quit      ↑↓←→ : Select Item   |
| RTC Alarm Second   | 30       | F1 : Help      PU/PD/+/- : Modify    |
| LAN/Ring Power On  | Disabled | F5 : Old Values    (Shift)F2 : Color |
| Keyboard Power On  | Disabled | F6 : Load Optimal Values             |
| Wake-Up Key  | Any Key  | F7 : Load Best Performance Values    |
| Wake-Up Password   | N/A      |                                      |

|  |   |
|--|---|
| <b>ACPI Aware O/S</b>                                    | Enable this item if you are using an O/S that supports ACPI function.   |
| <b>Power Management</b>                                  | Use this item to select a power management scheme. Both APM and ACPI are supported.   |
| <b>Suspend Time Out</b>                                  | This sets the timeout for Suspend mode in minutes. If the time selected passes without any system activity, the computer will enter power-saving Suspend mode.  |
| <b>Resume On RTC Alarm Date / Hour / Minute / Second</b> | The system can be turned off with a software command. If you enable this item, the system can automatically resume at a fixed time based on the system's RTC (realtime clock). Use the items below this one to set the date and time of the wake-up alarm. You must use an ATX power supply in order to use this feature. |
| <b>LAN/Ring Power On</b>                                 | The system can be turned off with a software command. If you enable this item, the system can automatically resume if there is an incoming call on the Modem/Ring, or traffic on the network adapter. You must use an ATX power supply in order to use this feature.  |
| <b>Keyboard Power On Wake-Up Key Wake-Up Password</b>    | If you enable this item, system can automatically resume by pressing any keys, power key on the keyboard or typing in the password. You must use an ATX power supply in order to use this feature.  |

## PCI / Plug and Play Setup Page

This page sets some of the parameters for devices installed on the PCI bus and devices that use the system plug and play capability.

| AMIBIOS SETUP – PCI / PLUG AND PLAY SETUP<br>(C) 2000 American Megatrends, Inc. All Rights Reserved   |          |
|---|----------|
| Share Memory Size   | 32MB     |
| Primary Graphics Adapter  | PCI      |
| Allocate IRQ to PCI VGA   | Yes      |
| PCI IDE BusMaster   | Disabled |
| ESC : Quit      ↑↓←→ : Select Item<br>F1 : Help      PU/PD/+/- : Modify<br>F5 : Old Values (Shift)F2 : Color<br>F6 : Load Optimal Values<br>F7 : Load Best Performance Values |          |

|                                 |  |
|---------------------------------|--|
| <b>Share Memory Size</b>        | This item lets you allocate a portion of the main memory for the onboard VGA display application with 8/16/32/64MB options.  |
| <b>Primary Graphics Adapter</b> | This item indicates if the primary graphics adapter uses the PCI or the AGP bus. The default PCI setting still lets the onboard display work and allows the use of a second display card installed in an AGP slot. |
| <b>Allocate IRQ to PCI VGA</b>  | If this item is enabled, an IRQ will be assigned to the PCI VGA graphics system. You set this value to No to free up an IRQ.   |
| <b>PCI IDE BusMaster</b>        | This item enables or disables the DMA under DOS mode. We recommend you to leave this item at the default value.  |

## Load Optimal Settings

If you select this item and press **Enter** a dialog box appears. If you press **Y**, and then **Enter**, the Setup Utility loads a set of fail-safe default values. These default values are not very demanding and they should allow your system to function with most kinds of hardware and memory chips.

---

**Note:** *It is highly recommended that users enter this option to load optimal values for accessing the best performance.*

---

## Load Best Performance Settings

If you select this item and press **Enter** a dialog box appears. If you press **Y**, and then **Enter**, the Setup Utility loads a set of best-performance default values. These default values are quite demanding and your system might not function properly if you are using slower memory chips or other low-performance components.

## Features Setup Page

This page sets some of the parameters for peripheral devices connected to the system.

| AMIBIOS SETUP – FEATURES SETUP<br>(C) 2000 American Megatrends, Inc. All Rights Reserved |          |                                   |
|--|----------|-----------------------------------|
| OnBoard FDC  | Enabled  |                                   |
| OnBoard Serial PortA   | 3F8/COM1 |                                   |
| OnBoard IR Port  | Disabled |                                   |
| OnBoard Parallel Port  | 378      |                                   |
| Parallel Port Mode   | ECP      |                                   |
| Parallel Port IRQ  | 7        |                                   |
| Parallel Port DMA  | 3        |                                   |
| OnBoard PCI IDE  | Both     |                                   |
| Audio Device   | Enabled  | ESC : Quit    ↑↓←→ : Select Item  |
| Modem Device   | Auto     | F1 : Help    PU/PD/+/- : Modify   |
| Ethernet Device  | Enabled  | F5 : Old Values (Shift)F2 : Color |
| OnBoard USB Function   | Enabled  | F6 : Load Optimal Values          |
| USB Function for DOS   | Disabled | F7 : Load Best Performance Values |
| ThumbDrive for DOS   | Disabled |                                   |

---

**OnBoard FDC**    Use this item to enable or disable the onboard floppy disk drive interface.

---



|                              |   |
|------------------------------|---|
| <b>OnBoard Serial PortA</b>  | Use these items to enable or disable the onboard COM1 serial port, and to assign a port address.  |
| <b>OnBoard IR Port</b>       | Use this item to enable or disable the onboard infrared port, and to assign a port address.   |
| <b>Onboard Parallel Port</b> | Use this item to enable or disable the onboard LPT1 parallel port, and to assign a port address. The Auto setting will detect and available address.                    |
| <b>Parallel Port Mode</b>    | Use this item to set the parallel port mode. You can select SPP (Standard Parallel Port), ECP (Extended Capabilities Port), EPP (Enhanced Parallel Port), or ECP + EPP. |
| <b>Parallel Port IRQ</b>     | Use this item to assign either IRQ 5 or 7 to the parallel port.   |
| <b>Parallel Port DMA</b>     | Use this item to assign a DMA channel to the parallel port. The options are 0, 1 and 3.   |
| <b>OnBoard PCI IDE</b>       | Use this item to enable or disable the onboard PCI IDE channel.   |
| <b>Audio Device</b>          | This item enables or disables the AC'97 audio chip.   |
| <b>Modem Device</b>          | This item enables or disables the onboard AC'97 modem chip.   |
| <b>Ethernet Device</b>       | This item enables or disables the onboard Ethernet LAN.   |
| <b>OnBoard USB Function</b>  | Enable this item if you plan to use the USB ports on this motherboard.  |
| <b>USB Function for DOS</b>  | Enable this item if you plan to use the USB ports on this motherboard in a DOS environment.   |
| <b>ThumbDrive for DOS</b>    | Enable this item to make a small portion of memory storage device for the USB ports.  |

## CPU PnP Setup Page

This page lets you manually configure the motherboard for the CPU. The system will automatically detect the kind of CPU that you have installed and make the appropriate adjustments to the items on this page.

| AMIBIOS SETUP – CPU PnP SETUP   |          |
|---|----------|
| ©2000 American Megatrends, Inc. All Rights Reserved   |          |
| CPU Over-clocking Func.   | Disabled |
| CPU Frequency   | 166 MHz  |
| CPU Over-clocking Freq.   | N/A      |
| DRAM Frequency  | Auto     |
| ESC : Quit      ↑↓←→ : Select Item<br>F1 : Help      PU/PD/+/- : Modify<br>F5 : Old Values (Shift)F2 : Color<br>F6 : Load Optimal Values<br>F7 : Load Best Performance Values |          |

|                                    |   |
|------------------------------------|---|
| <b>CPU Over-clocking Func.</b>     | This item enables or disables the CPU over-clocking function installed in your system.  |
| <b>CPU/DRAM Frequency Ratio</b>    | This item adjusts the CPU/DRAM frequency installed in your system.  |
| <b>CPU Over-clocking Frequency</b> | This item decides CPU over-clocking frequency installed in your system. If the over-clocking fails, please turn off the system power. And then, hold the PageUp key (similar to the Clear CMOS function) and turn on the power, the BIOS will recover the safe default. |

## Hardware Monitor Page

This page sets some of the parameters for the hardware monitoring function of this motherboard.

| AMIBIOS SETUP - HARDWARE MONITOR                       |            |
|--|------------|
| (C) 2000 American Megatrends, Inc. All Rights Reserved |            |
| *** System Hardware ***                                |            |
| Vcore  | 1.728V     |
| Vdimm  | 2.592V     |
| Vivdd  | 2.592V     |
| Vcc5V  | 4.865V     |
| SB3V   | 3.360V     |
| SYSTEM Fan Speed                                       | 0 RPM      |
| CPU Fan Speed  | 3668RPM    |
| SYSTEM Temperature                                     | 38°C/100°F |
| CPU Temperature  | 52°C/125°F |
| ESC : Quit      ↑↓←→ : Select Item                     |            |
| F1 : Help      PU/PD/+/- : Modify                      |            |
| F5 : Old Values (Shift)F2 : Color                      |            |
| F6 : Load Optimal Values                               |            |
| F7 : Load Best Performance Values                      |            |

---

|  |   |
|--|---|
| <b>CPU/System Temperature</b>          | These items display CPU and system temperature measurement.                                 |
| <b>FANS &amp; Voltage Measurements</b> | These items indicate cooling fan speeds in RPM and the various system voltage measurements. |

---

## Change Password

If you highlight this item and press **Enter**, a dialog box appears which lets you enter a Supervisor password. You can enter no more than six letters or numbers. Press **Enter** after you have typed in the password. A second dialog box asks you to retype the password for confirmation. Press **Enter** after you have retyped it correctly. The password is then required to access the Setup Utility or for that and at start-up, depending on the setting of the Password Check item in Advanced Setup.

### **Change or Remove the Password**

Highlight this item, press Enter and type in the current password.  
At the next dialog box, type in the new password, or just press  
Enter to disable password protection.

### **Exit**

Highlight this item and press **Enter** to save the changes that you  
have made in the Setup Utility configuration and exit the program.  
When the Save and Exit dialog box appears, press **Y** to save and  
exit, or press **N** to exit without saving.

## Chapter 4

# Software & Applications

---

### Introduction

This chapter describes the contents of the support CD-ROM that comes with the motherboard package.

The support CD-ROM contains all useful software, necessary drivers and utility programs to properly run our products. More program information is available in a README file, located in the same directory as the software.

To run the support CD, simply insert the CD into your CD-ROM drive. An Auto Setup screen automatically pops out, and then you can go on the auto-installing or manual installation depending on your operating system.

If your operating system is Windows 2000/XP, it will automatically install all the drivers and utilities for your motherboard; if Windows NT or manual installation, please follow the instructions described as the Installing under Windows NT or Manual Installation section.

## Installing Support Software

1. Insert the support CD-ROM disc in the CD-ROM drive.
2. When you insert the CD-ROM disc in the system CD-ROM drive, the CD automatically displays an Auto Setup screen.
3. The screen displays three buttons of **Setup**, **Browse CD** and **Exit** on the right side, and three others **Setup**, **Application** and **ReadMe** at the bottom. Please see the following illustration.



The **Setup** button runs the software auto-installing program as explained in next section.

The **Browse CD** button is a standard Windows command that you can check the contents of the disc with the Windows 98 file browsing interface.

The **Exit** button closes the Auto Setup window. To run the program again, reinsert the CD-ROM disc in the drive; or click the CD-ROM driver from the Windows Explorer, and click the Setup icon.

The **Application** button brings up a software menu. It shows the bundled software that this motherboard supports.

The **ReadMe** brings you to the Install Path where you can find out path names of software driver.

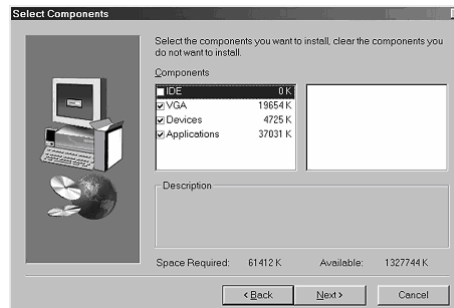
## Auto-Installing under Windows 2000/XP

If you are under Windows 2000/XP, please click the **Setup** button to run the software auto-installing program while the Auto Setup screen pops out after inserting the support CD-ROM:

1. The installation program loads and displays the following screen. Click the **Next** button.



2. Select the items that you want to setup by clicking on it (the default options are recommended). Click the **Next** button to proceed.



3. The support software will automatically install.

Once any of the installation procedures start, software is automatically installed in sequence. You need to follow the onscreen instructions, confirm commands and allow the computer to restart as few times as needed to complete installing whatever software you selected. When the process is finished, all the support software will be installed and start working.

### **Installing under Windows NT or Manual Installation**

If you are under Windows NT, the auto-installing program doesn't work out; or you have to do the manual installation, please follow this procedure while the Auto Setup screen pops out after inserting the support CD-ROM:

1. Click the **ReadMe** to bring up a screen, and then click the Install Path at the bottom of the screen.
2. Find out your motherboard model name and click on it to obtain its correct driver directory.
3. Install each software in accordance with the corresponding driver path.

### **Bundled Software Installation**

All bundled software available on the CD-ROM is for users' convenience. You can install bundled software as follows:

1. Click the **Application** button while the Auto Setup screen pops out after inserting the support CD-ROM.
2. A software menu appears. Click the software you want to install.
3. Follow onscreen instructions to install the software program step by step until finished.