



# CERTIFICATE

The TÜV CERT Certification Body  
for QM Systems of RWTÜV Systems GmbH

hereby certifies in accordance with TÜV CERT  
procedure that

**ELITEGROUP COMPUTER SYSTEMS CO., LTD.  
ECS MANUFACTURING (SHENZHEN) CO., LTD.  
ELITE TECHNOLOGY (SHENZHEN) CO., LTD.**

2F, No. 240, Sec. 1, Nei Hu Road, Taipei, Taiwan 114  
No. 22, Alley 38, Lane 91, Sec. 1, Nei Hu Road, Taipei, Taiwan 114  
No. 20 & No. 26, Free Trade Zone, ShaTouJiao, Shenzhen City, Guangdong Province, China

has established and applies a quality system for

**Design, Manufacturing and Sales of Mainboards,  
Personal Computers, Notebooks and Peripheral Cards**

An audit was performed, Report No. **2.5-1585/2000**

Proof has been furnished that the requirements according to  
**ISO 9001 : 2000 / EN ISO 9001 : 2000 / JIS Q 9001 : 2000 / ANSI/ASQC Q9001 : 2000**

are fulfilled. The certificate is valid until **27 January 2007**

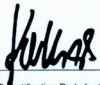
Certificate Registration No. **04100 2000 1325**

The company has been certified since **2000**



Essen, 04.03.2004



  
The TÜV CERT Certification Body for QM Systems  
of RWTÜV Systems GmbH



# ISO14001 CERTIFICATE

Certificate NO.: 05-2001-065

We hereby certify that  
**ECS Manufacturing(Shenzhen) Co.,Ltd**

by reason of its

**Environmental Management System**

has been awarded this certificate for  
compliance with the standard

**ISO14001:1996**

The Environmental Management System  
applies in the following area:

The manufacture of Mother Board and Peripheral Card and interrelated  
management activities of ECS Manufacturing(Shenzhen) Co.,Ltd.  
which is located in No.20,Free Trade Zone,Shatuojiiao,Shenzhen, P. R.China.

Date of issue: 30th Dec 2001

Date of expiry: 29th Dec 2004

Signed by:



SHENZHEN ENVIRONMENTAL MANAGEMENT SYSTEM CERTIFICATION CENTER

## Preface

### Copyright

This publication, including all photographs, illustrations and software, is protected under international copyright laws, with all rights reserved. Neither this manual, nor any of the material contained herein, may be reproduced without written consent of the author.

Version 1.0

### Disclaimer

The information in this document is subject to change without notice. The manufacturer makes no representations or warranties with respect to the contents hereof and specifically disclaims any implied warranties of merchantability or fitness for any particular purpose. The manufacturer reserves the right to revise this publication and to make changes from time to time in the content hereof without obligation of the manufacturer to notify any person of such revision or changes.

### Trademark Recognition

Microsoft, MS-DOS and Windows are registered trademarks of Microsoft Corp.

AMD, Athlon, Sempron, and Duron are registered trademarks of AMD Corporation.

Other product names used in this manual are the properties of their respective owners and are acknowledged.

### Federal Communications Commission (FCC)

This equipment has been tested and found to comply with the limits for a Class B digital device, pursuant to Part 15 of the FCC Rules. These limits are designed to provide reasonable protection against harmful interference in a residential installation. This equipment generates, uses, and can radiate radio frequency energy and, if not installed and used in accordance with the instructions, may cause harmful interference to radio communications. However, there is no guarantee that interference will not occur in a particular installation. If this equipment does cause harmful interference to radio or television reception, which can be determined by turning the equipment off and on, the user is encouraged to try to correct the interference by one or more of the following measures:

- Reorient or relocate the receiving antenna.
- Increase the separation between the equipment and the receiver.
- Connect the equipment onto an outlet on a circuit different from that to which the receiver is connected.
- Consult the dealer or an experienced radio/TV technician for help.

Shielded interconnect cables and a shielded AC power cable must be employed with this equipment to ensure compliance with the pertinent RF emission limits governing this device. Changes or modifications not expressly approved by the system's manufacturer could void the user's authority to operate the equipment.

## Preface

## Declaration of Conformity

This device complies with part 15 of the FCC rules. Operation is subject to the following conditions:

- This device may not cause harmful interference, and
- This device must accept any interference received, including interference that may cause undesired operation.

## Canadian Department of Communications

This class B digital apparatus meets all requirements of the Canadian Interference-causing Equipment Regulations.

Cet appareil numérique de la classe B respecte toutes les exigences du Règlement sur le matériel brouilleur du Canada.

## About the Manual

The manual consists of the following:

### Chapter 1

#### Introducing the Motherboard

Describes features of the motherboard.

Go to  page 1

### Chapter 2

#### Installing the Motherboard

Describes installation of motherboard components.

Go to  page 7

### Chapter 3

#### Using BIOS

Provides information on using the BIOS Setup Utility.

Go to  page 27

### Chapter 4

#### Using the Motherboard Software

Describes the motherboard software

Go to  page 41

### Chapter 5

#### VIA VT8237 SATA RAID Setup Guide

Provides information about SATA RAID Setup

Go to  page 45

## Preface

## **TABLE OF CONTENTS**

---



---

Preface	i
<b>Chapter 1</b>	<b>1</b>
<b>Introducing the Motherboard</b>	<b>1</b>
Introduction.....	1
Features.....	2
Motherboard Components.....	4
<b>Chapter 2</b>	<b>7</b>
<b>Installing the Motherboard</b>	<b>7</b>
Safety Precautions.....	7
Choosing a Computer Case.....	7
Installing the Motherboard in a Case.....	7
Checking Jumper Settings.....	8
<i>Setting Jumpers.....</i>	<i>8</i>
<i>Checking Jumper Settings.....</i>	<i>9</i>
<i>Jumper Settings.....</i>	<i>9</i>
Connecting Case Components.....	10
<i>Front Panel Header.....</i>	<i>12</i>
Installing Hardware.....	13
<i>Installing the Processor.....</i>	<i>13</i>
<i>Installing Memory Modules.....</i>	<i>14</i>
<i>Installing a Hard Disk Drive/CD-ROM/SATA Hard Drive.....</i>	<i>18</i>
<i>Installing a Floppy Diskette Drive.....</i>	<i>20</i>
<i>Installing Add-on Cards.....</i>	<i>21</i>
<i>Connecting Optional Devices.....</i>	<i>24</i>
Connecting I/O Devices.....	26
<b>Chapter 3</b>	<b>27</b>
<b>Using BIOS</b>	<b>27</b>
About the Setup Utility.....	27
<i>The Standard Configuration.....</i>	<i>27</i>
<i>Entering the Setup Utility.....</i>	<i>27</i>
<i>Updating the BIOS.....</i>	<i>29</i>
Using BIOS.....	29
<i>Standard CMOS Setup.....</i>	<i>30</i>
<i>Advanced Setup.....</i>	<i>31</i>
<i>Features Setup.....</i>	<i>33</i>

<i>Power Management Setup</i> .....	34
<i>PCI/Plug and Play Setup</i> .....	36
<i>BIOS Security Features</i> .....	37
<i>CPU PnP Setup</i> .....	38
<i>Hardware Monitor</i> .....	39
<i>Load Optimal Defaults</i> .....	40
<i>Save Changes and Exit</i> .....	40
<i>Discard Changes and Exit</i> .....	40
<b>Chapter 4</b>	<b>41</b>
<b>Using the Motherboard Software</b>	<b>41</b>
About the Software CD-ROM.....	41
Auto-installing under Windows 98/ME/2000/XP.....	41
<i>Running Setup</i> .....	42
Manual Installation.....	44
Utility Software Reference.....	44
<b>Chapter 5</b>	<b>45</b>
<b>VIA VT8237 SATA RAID Setup Guide</b>	
	<b>45</b>
VIA RAID Configurations.....	45
Installing RAID Software & Drives.....	52
Using VIARAID Tool.....	54
<b>Multi-Language Translation</b>	

## Chapter 1

### *Introducing the Motherboard*

---

#### **Introduction**

Thank you for choosing K8T890-A motherboard of great performance and with enhanced function. The K8T890-A is designed to fit the AMD K8 processors in the 939-pin package. Based on the ATX form factor, measuring 305 mm x 211 mm, this motherboard incorporates the following chipsets: K8T890 Northbridge and VT8237 Southbridge chipsets.

The K8T890 Northbridge features the HyperTransport Technology to transfer of 2000MT/s, 1600 MT/s, 1200 MT/s, 800 MT/s or 400 MT/s each direction simultaneously, providing a total maximum data transfer bandwidth of 8 GB/sec. Two 184 pin unbuffered DDR SDRAM DIMM sockets support up to 2 GB in total memory. Aside from the onboard AGP Express slot, one PCI Express x16 slot, intended for Graphics interface, is fully compliant to the PCI Express Base Specification revision 1.0a. The K8T890 Northbridge interconnects to the South Bridge through the high speed 8x 66 MHz (533 MB/sec) V-Link interface.

The VT8237 Southbridge is a highly integrated peripheral controller, it includes an integrated keyboard controller with PS2 mouse support, two-channel Serial ATA/RAID hard disk controller, master mode enhanced Parallel IDE controller with full scatter/gather capability and extension to UltraDMA-133/100/66 for 133/100/66 MB/sec transfer rate, integrated USB 2.0 interface supporting up to 8 USB 2.0 ports. The VT8237 features outstanding expansion capability such as, five PCI slots with PCI v2.2 compliant. The VT8237 integrated Fast Ethernet controller with standard MII interface to an external PHY for 10/100Mb Base-T Ethernet, as well as AC'97 audio codec compliant.

There is an advanced full set of I/O ports in the rear panel, including PS/2 mouse and keyboard connectors, COM1, LPT1, four USB ports at the rear I/O, one LAN port (optional), and audio jacks for microphone, line-in, and line-out.

## Feature

### Processor

K8T890-A uses a 939-pin socket that carries the following features:

- Supports AMD K8 processors with HyperTransport Technology
- Transfer rate of 2000/1600/1200/800/400 MT/s

HyperTransport Technology is a point-to-point link between two devices, it enables integrated circuits to exchange information at much higher speeds than currently available interconnect technologies.

### Chipset

The VIA K8T890 Northbridge (NB) and VIA VT8237 Southbridge (SB) chipset is based on an innovative and scalable architecture with proven reliability and performance.

- |                        |   |
|------------------------|---|
| <b>K8T890<br/>(NB)</b> | <ul style="list-style-type: none"> <li>• 1000/800/600/400/200 MHz clock rates with Double Data Rate-style operation for 2000/1600/1200/800/400 MT/s in both directions simultaneously</li> <li>• Supports 66 MHz, 8x/4x transfer modes, Ultra V-Link Host interface with 1 GB/s total bandwidth</li> <li>• Supports asynchronous interface between HyperTransport and PCI Express</li> <li>• Compliant with advanced high bandwidth PCI Express 1.0a</li> </ul> |
| <b>VT8237<br/>(SB)</b> | <ul style="list-style-type: none"> <li>• Supports 16-bit 66 MHz V-Link Host interface with total bandwidth of 1066 MB/s</li> <li>• Compliant with PCI 2.2 specification at 33 MHz, supporting up to 6 PCI masters</li> <li>• Integrated Dual channel UltraDMA 133/100/66 Master Mode EIDE Controller</li> <li>• USB 2.0 Controller, supporting for 8 USB 2.0 ports</li> <li>• Integrated keyboard Controller with PS2 mouse support</li> </ul>                  |

### Memory

- Supports DDR400/333/266 memory types with Dual-channel architecture
- Accommodates two unbuffered 2.5V 184-pin DDR SDRAM DIMM sockets
- A total maximum capacity 2 GB

### Audio CODEC

- Meets Microsoft WHQL/WLP 2.0 audio requirements
- Compliant with AC'97 v2.3 specification
- High quality differential CD input
- Supports double sampling rate (96KHz) of DVD audio playback
- Direct Sound 3D™ compatible

## Introducing the Motherboard



## Onboard LAN (optional)

The onboard LAN provides the following features:

- Dual speed -- 100/10 Mbps
- MII interface to ethernet controller
- Auto negotiation: 10/100, Full/Half Duplex
- Meet all applicable IEEE 802.3, 10Base-T and 100Base-Tx standards

## Expansion Options

The motherboard comes with the following expansion options:

- One PCI Express x16 slot
- Two PCI Express x1 slots
- Two 32-bit PCI slots
- One AGP Express slot
- Two IDE connectors which support four IDE devices
- One floppy disk drive interface
- Two 7-pin SATA connectors
- One Communications Networking Riser (CNR) slot

This motherboard supports Ultra DMA bus mastering with transfer rates of 133/100/66 MB/s.

## Integrated I/O

The motherboard has a full set of I/O ports and connectors:

- Two PS/2 ports for mouse and keyboard
- One serial port
- One parallel port
- Eight USB ports (rear panel x 4, header x 4)
- One LAN port (optional)
- Audio jacks for microphone, line-in and line-out

## BIOS Firmware

The motherboard uses AMI BIOS that enables users to configure many system features including the following:

- Power management
- Wake-up alarms
- CPU parameters
- CPU and memory timing

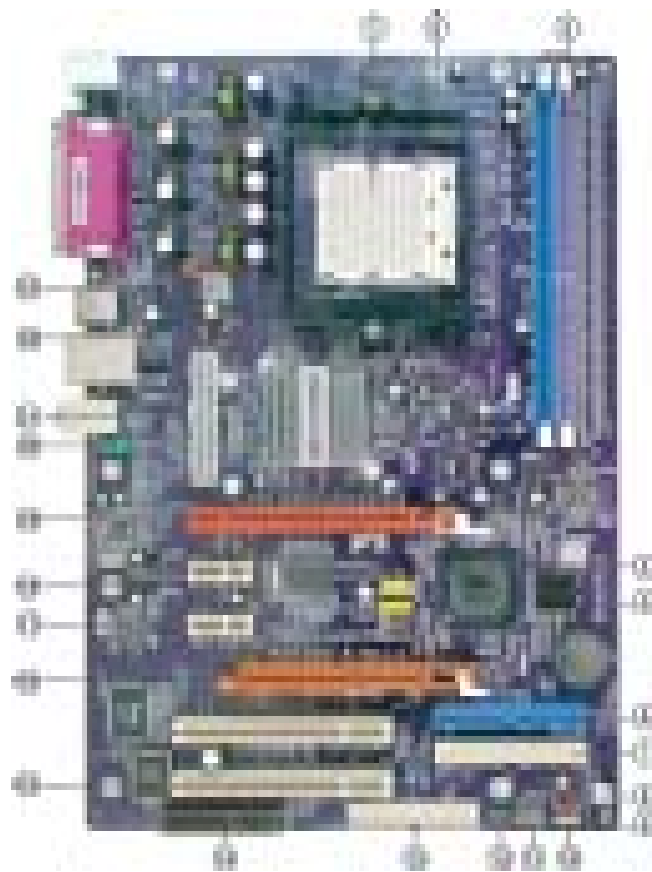
The firmware can also be used to set parameters for different processor clock speeds.



*Some hardware specifications and software items are subject to change without prior notice.*

## Introducing the Motherboard

## Motherboard Components



## Introducing the Motherboard

**Table of Motherboard Components**

<b>LABEL</b>	<b>COMPONENT</b>
1 CPU Socket	Socket 939 for AMD K8 processor
2 CPU_FAN1	CPU cooling fan connector
3 DIMM1~2	184-pin DDR SDRAM slots
4 USB2~3	Front Panel USB headers
5 SATA1~SATA2	Serial ATA connectors
6 IDE1	Primary IDE connector
7 IDE2	Secondary IDE connector
8 SYS_FAN1	System cooling fan connector
9 JCMOS1	Clear CMOS jumper
10 SPK1	Speaker header
11 PANEL1	Front panel switch/LED header
12 SIR1	Infrared header
13 FDD1	Floppy disk drive connector
14 CNR1	Communications Networking Riser slot
15 PCI1~2	32-bit add-on card slots
16 AGPRO1	AGP Express graphics card slot
17 PCI-E2~3	PCI Express x1 Slots
18 CD1	CD-in header
19 PCI-E1	PCI Express x16 Slot
20 AUDIO2	Front panel audio header
21 PWR1	Standard 24-pin ATX power connector
22 NB_FAN*	Northbridge cooling fan connector
23 PWR2	4-pin +12V power connector

“\*” stands for optional components and may not exist onboard.

This concludes Chapter 1. The next chapter explains how to install the motherboard.

## Introducing the Motherboard

*Memo*

Introducing the Motherboard

## Chapter 2

### ***Installing the Motherboard***

---

#### **Safety Precautions**

- Follow these safety precautions when installing the motherboard
- Wear a grounding strap attached to a grounded device to avoid damage from static electricity
- Discharge static electricity by touching the metal case of a safely grounded object before working on the motherboard
- Leave components in the static-proof bags they came in
- Hold all circuit boards by the edges. Do not bend circuit boards

#### **Choosing a Computer Case**

There are many types of computer cases on the market. The motherboard complies with the specifications for the ATX system case. First, some features on the motherboard are implemented by cabling connectors on the motherboard to indicators and switches on the system case. Make sure that your case supports all the features required. Secondly, K8T890-A supports one or two floppy diskette drives and four enhanced IDE drives. Make sure that your case has sufficient power and space for all drives that you intend to install.

Most cases have a choice of I/O templates in the rear panel. Make sure that the I/O template in the case matches the I/O ports installed on the rear edge of the motherboard.

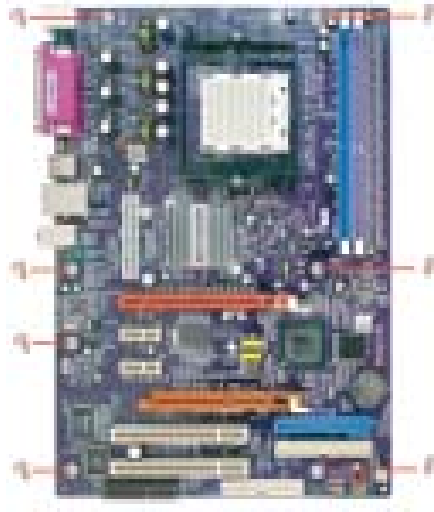
This motherboard carries an ATX form factor of 305 X 211 mm. Choose a case that accommodates this form factor.

#### **Installing the Motherboard in a Case**

Refer to the following illustration and instructions for installing the motherboard in a case.

Most system cases have mounting brackets installed in the case, which correspond the holes in the motherboard. Place the motherboard over the mounting brackets and secure the motherboard onto the mounting brackets with screws.

Ensure that your case has an I/O template that supports the I/O ports and expansion slots on your motherboard.



*Do not over-tighten the screws as this can stress the motherboard.*

## Checking Jumper Settings

This section explains how to set jumpers for correct configuration of the motherboard.

### *Setting Jumpers*

Use the motherboard jumpers to set system configuration options. Jumpers with more than one pin are numbered. When setting the jumpers, ensure that the jumper caps are placed on the correct pins.

The illustrations show a 2-pin jumper. When the jumper cap is placed on both pins, the jumper is **SHORT**. If you remove the jumper cap, or place the jumper cap on just one pin, the jumper is **OPEN**.



**SHORT**



**OPEN**

This illustration shows a 3-pin jumper. Pins 1 and 2 are **SHORT**.




## Installing the Motherboard

### *Checking Jumper Settings*

The following illustration shows the location of the motherboard jumpers. Pin 1 is labeled.



### *Jumper Settings*

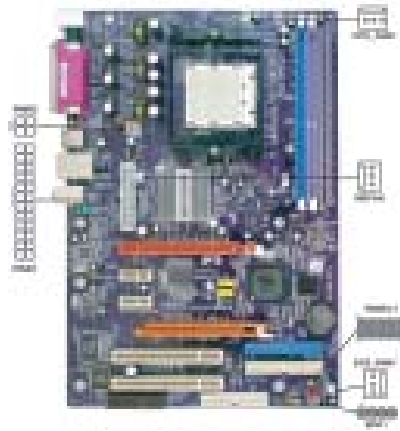
Jumper	Type	Description	Setting (default)	
JCMOS1	3-pin	CLEAR CMOS	1-2: NORMAL 2-3: CLEAR  Before clearing the CMOS, make sure to turn the system off.	JCMOS1  1

## Installing the Motherboard

## Connecting Case Components

After you have installed the motherboard into a case, you can begin connecting the motherboard components. Refer to the following:

- 1 Connect the CPU cooling fan cable to **CPU\_FAN1**.
- 2 Connect the Northbridge cooling fan cable **NB\_FAN**.
- 3 Connect the system cooling fan connector to **SYS\_FAN1**.
- 4 Connect the case speaker cable to **SPK1**.
- 5 Connect the case switches and indicator LEDs to the **PANEL1**.
- 6 Connect the standard power supply connector to **PWR1**.
- 7 Connect the auxiliary case power supply connector to **PWR2**.



### Connecting 20/24-pin power cable



Users please note that the 20-pin and 24-pin power cables can both be connected to the ATX1 connector. With the 20-pin power cable, just align the 20-pin power cable with the pin 1 of the ATX1 connector. However, using 20-pin power cable may cause the system to become unbootable or unstable because of insufficient electricity. A minimum power of 300W is recommended for a fully-configured system.



*20-pin power cable*

Users please note that when installing 20-pin power cable, the latch of power cable falls on the left side of the PWR1 connector latch, just as the picture shows.



*24-pin power cable*

Users please note that when installing 24-pin power cable, the latches of power cable falls on the right side of PWR1 connector latch.

## Installing the Motherboard



**CPU\_FAN1/SYS\_FAN1/NB\_FAN: FAN Power Connectors**

Pin	Signal Name	Function
1	GND	System Ground
2	+12V	Power +12V
3	Sense	Sensor

**PWR1: ATX 24-pin Power Connector**

Pin	Signal Name	Pin	Signal Name
1	+3.3V	13	+3.3V
2	+3.3V	14	-12V
3	Ground	15	COM
4	+5V	16	PS_ON
5	Ground	17	COM
6	+5V	18	COM
7	Ground	19	COM
8	PWRGD	20	-5V
9	+5VSB	21	+5V
10	+12V	22	+5V
11	+12V	23	+5V
12	+3.3V	24	COM

**PWR2: ATX 12V Power Connector**

Pin	Signal Name
1	Ground
2	Ground
3	+12V
4	+12V

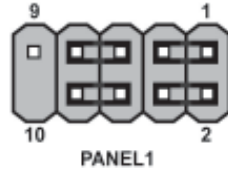
**SPK1: Internal speaker**

Pin	Signal Name
1	VCC
2	Key
3	GND
4	Signal

**Installing the Motherboard**

### Front Panel Header

The front panel connector (PANEL1) provides a standard set of switch and LED header commonly found on ATX or micro-ATX cases. Refer to the table below for information:



Pin	Signal Name	Function	Pin	Signal Name	Function
1	HD_LED_P	Hard disk LED(+)	2	FPPWR/SLP	*MSG LED(+)
3	HD_LED_N	Hard disk LED(-)	4	FP PWR/SLP	*MSG LED(-)
5	RST_SW_N	Reset Switch(-)	6	PWR_SW_P	Power Switch(+)
7	RST_SW_P	Reset Switch(+)	8	PWR_SW_N	Power Switch(-)
9	RSVD	Reserved	10	Key	No pin

\* MSG LED (dual color or single color)

#### Hard Drive Activity LED

Connecting pins 1 and 3 to a front panel mounted LED provides visual indication that data is being read from or written to the hard drive. For the LED to function properly, an IDE drive should be connected to the onboard IDE interface. The LED will also show activity for devices connected to the SCSI (hard drive activity LED) connector.

#### Power/Sleep/Message waiting LED

Connecting pins 2 and 4 to a single or dual-color, front panel mounted LED provides power on/off, sleep, and message waiting indication.

#### Reset Switch

Supporting the reset function requires connecting pin 5 and 7 to a momentary-contact switch that is normally open. When the switch is closed, the board resets and runs POST.

#### Power Switch

Supporting the power on/off function requires connecting pins 6 and 8 to a momentary-contact switch that is normally open. The switch should maintain contact for at least 50 ms to signal the power supply to switch on or off. The time requirement is due to internal debounce circuitry. After receiving a power on/off signal, at least two seconds elapses before the power supply recognizes another on/off signal.

## Installing the Motherboard

## Installing Hardware

### *Installing the Processor*



*Caution: When installing a CPU heatsink and cooling fan make sure that you DO NOT scratch the motherboard or any of the surface-mount resistors with the clip of the cooling fan. If the clip of the cooling fan scrapes across the motherboard, you may cause serious damage to the motherboard or its components.*

*On most motherboards, there are small surface-mount resistors near the processor socket, which may be damaged if the cooling fan is carelessly installed.*

*Avoid using cooling fans with sharp edges on the fan casing and the clips. Also, install the cooling fan in a well-lit work area so that you can clearly see the motherboard and processor socket.*

### **Before installing the Processor**

This motherboard automatically determines the CPU clock frequency and system bus frequency for the processor. You may be able to change these settings by changing the settings in the system Setup Utility. We strongly recommend that you do not over-clock processors or other components to run faster than their rated speed.



*Warning: Over-clocking components can adversely affect the reliability of the system and introduce errors into your system. Over-clocking can permanently damage the motherboard by generating excess heat in components that are run beyond the rated limits.*

This motherboard has a Socket 939 processor socket. When choosing a processor, consider the performance requirements of the system. Performance is based on the processor design, the clock speed and system bus frequency of the processor, and the quantity of internal cache memory and external cache memory.

## Installing the Motherboard

## CPU Installation Procedure

The following illustration shows CPU installation components.

- 1 Install your CPU. Pull up the lever away from the socket and lift up to 90-degree angle.
- 2 Locate the CPU cut edge (the corner with the pin hold noticeably missing). Align and insert the CPU correctly.
- 3 Press the lever down and apply thermal grease on top of the CPU.
- 4 Put the CPU Fan down on the retention module and snap the four retention legs of the cooling fan into place.
- 5 Flip the levers over to lock the heat sink in place and connect the CPU cooling Fan power cable to the CPUFAN connector. This completes the installation.



*To achieve better airflow rates and heat dissipation, we suggest that you use a high quality fan with 4800 rpm at least. CPU fan and heatsink installation procedures may vary with the type of CPU fan/heatsink supplied. The form and size of fan/heatsink may also vary.*

## Installing Memory Modules

K8T890-A accommodates two 184-pin 2.5V unbuffered Double Data Rate (DDR) SDRAM (Synchronous Dynamic Random Access Memory) memory modules. K8T890-A can support DDR400/333/266 memory types and its total maximum memory size is 2 GB.

### DDR SDRAM memory module table

Memory module	Memory Bus
DDR266	133MHz
DDR333	166MHz
DDR400	200MHz



*Do not remove any memory module from its antistatic packaging until you are ready to install it on the motherboard. Handle the modules only by their edges. Do not touch the components or metal parts. Always wear a grounding strap when you handle the modules.*

- Notes:**
1. When running dual channel mode, install only same (same density, DRAM technology and DRAM bus width) module for each deal channel.
  2. Please note that those types not in the **Table B (p.16)** will not boot up.

## Installing the Motherboard

## Installation Procedure

Refer to the following to install the memory modules.

- 1 This motherboard supports unbuffered DDR SDRAM only.
- 2 Push the latches on each side of the DIMM slot down.
- 3 Align the memory module with the slot. The DIMM slots are keyed with notches and the DIMMs are keyed with cutouts so that they can only be installed correctly.
- 4 Check that the cutouts on the DIMM module edge connector match the notches in the DIMM slot.
- 5 Install the DIMM module into the slot and press it firmly down until it seats correctly. The slot latches are levered upwards and latch on to the edges of the DIMM.



## Installing the Motherboard

**Table A: DDR (memory module) QVL (Qualified Vendor List)**

The following DDR400 memory modules have been tested and qualified for use with this motherboard.

Size	Vendor	Model Name
256MB	A-DATA	ADD8608A8A-4.5B
	A-DATA	ADD8608A8A-5B
	Apacer	AM3A568ACT-5A
	GEIL	G208L364D1TG5NKT3C
	GEIL	GE08L3264D1WL5NKT3H71
	GEIL	GE08L3264DIWL5NKT3H710902
	Hynix	HY5DU5656822BT-D43
	Hynix	HY5DU56822BT-D43
	KingMax	KDL388P4EA-50A
	Kingston	D3208DL2T-5 0323PT01
	Ramaxel	MT-46V32M8 TG-5BC
	SAMSUNG	K4H560838D-TCC4
	SAMSUNG	K4H560838D-TCCC
	TwinMOS	TMD7608F8E50D
	Winbond	W942508BH-5
512MB	CORSAIR	CMX512-3200C2PT
	CORSAIR	CMX512-3500C2PT
	CORSAIR	CMX512-4400PT
	Hynix	HY5DU56822DT-D5
	Infineon	HYB25D256800BT-5
	Kingston	D3208DL1T-5
	Kingston	KHX3500AK2
	Mushkin	PC3500 level ONE
	PSC	A2S56D30BTP
	SAMSUNG	K4H560838E-TCCC
	SAMSUNG	K4H560838D-TCC4
	Transcend	V58C2256804SAT5B
	UNIFOSA	USI 64M8B8-WB200-0431
	ValueSelect	VS32MB-5 2B0402
	1GB	CORSAIR

## Installing the Motherboard

**Table B: Unbuffered DIMM Support for 939-pin**

Data Bus	Chip Selects				Maximum DRAM Speed	
	MEMCS_1L_L*	MEMCS_2H_L*	MEMCS_2L_L*	MEMCS_2H_L*	1T	2T
64-bits	Single rank	N/A	N/A	N/A	DDR400	DDR400
	Double rank	N/A	N/A	N/A	DDR400	DDR400
	N/A	N/A	Single rank	N/A	DDR400	DDR400
	N/A	N/A	Double rank	N/A	DDR400	DDR400
	Single rank	N/A	Single rank	N/A	DDR333	DDR400
	Single rank	N/A	Double rank	N/A	DDR200	DDR400
	Double rank	N/A	Single rank	N/A	DDR200	DDR400
	Double rank	N/A	Double rank	N/A	DDR200	DDR333
128-bits	Single rank	Single rank	N/A	N/A	DDR400	DDR400
	Double rank	Double rank	N/A	N/A	DDR400	DDR400
	N/A	N/A	Single rank	Single rank	DDR400	DDR400
	N/A	N/A	Double rank	Double rank	DDR400	DDR400
	Single rank	Single rank	Single rank	Single rank	DDR333	DDR400
	Single rank	Single rank	Double rank	Double rank	DDR200	DDR400
	Double rank	Double rank	Single rank	Single rank	DDR200	DDR400
	Double rank	Double rank	Double rank	Double rank	DDR200	DDR333

**Note for “\*”:** Memory types must be set to values consistent with system hardware.

## Installing the Motherboard

### ***Installing a Hard Disk Drive/CD-ROM/SATA Hard Drive***

This section describes how to install IDE devices such as a hard disk drive and a CD-ROM drive.

#### **About IDE Devices**

Your motherboard has a primary and secondary IDE channel interface (IDE1 and IDE2). An IDE ribbon cable supporting two IDE devices is bundled with the motherboard.



*You must orient the cable connector so that the pin1 (color) edge of the cable corresponds to the pin 1 of the I/O port connector.*

#### **IDE1: Primary IDE Connector**

The first hard drive should always be connected to IDE1.



#### **IDE2: Secondary IDE Connector**

The second drive on this controller must be set to slave mode. The configuration is the same as IDE1.



IDE devices enclose jumpers or switches used to set the IDE device as MASTER or SLAVE. Refer to the IDE device user's manual. Installing two IDE devices on one cable, ensure that one device is set to MASTER and the other device is set to SLAVE. The documentation of your IDE device explains how to do this.

#### **About UltraDMA**

This motherboard supports UltraDMA 133/100/66. UDMA is a technology that accelerates the performance of devices in the IDE channel. To maximize performance, install IDE devices that support UDMA and use 80-pin IDE cables that support UDMA 133/100/66.

## **Installing the Motherboard**



### About SATA Connectors

Your motherboard features two SATA connectors supporting a total of two drives. SATA refers to Serial ATA (Advanced Technology Attachment) is the standard interface for the IDE hard drives which are currently used in most PCs. These connectors are well designed and will only fit in one orientation. Locate the SATA connectors on the motherboard (see page 21) and follow the illustration below to install the SATA hard drives.

### Installing Serial ATA Hard Drives

To install the Serial ATA (SATA) hard drives, use the SATA cable that supports the Serial ATA protocol. This SATA cable comes with an SATA power cable. You can connect either end of the SATA cable to the SATA hard drive or the connector on the motherboard.



SATA cable (optional)



SATA power cable (optional)

Refer to the illustration below for proper installation:

- 1 Attach either cable end to the connector on the motherboard.
- 2 Attach the other cable end to the SATA hard drive.
- 3 Attach the SATA power cable to the SATA hard drive and connect the other end to the power supply.



*This motherboard does not support the "Hot-Plug" function.*

## Installing the Motherboard

### ***Installing a Floppy Diskette Drive***

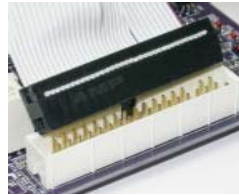
The motherboard has a floppy diskette drive (FDD) interface and ships with a diskette drive ribbon cable that supports one or two floppy diskette drives. You can install a 5.25-inch drive and a 3.5-inch drive with various capacities. The floppy diskette drive cable has one type of connector for a 5.25-inch drive and another type of connector for a 3.5-inch drive.



*You must orient the cable connector so that the pin 1 (color) edge of the cable corresponds to the pin 1 of the I/O port connector.*

#### **FDD1: Floppy Disk Connector**

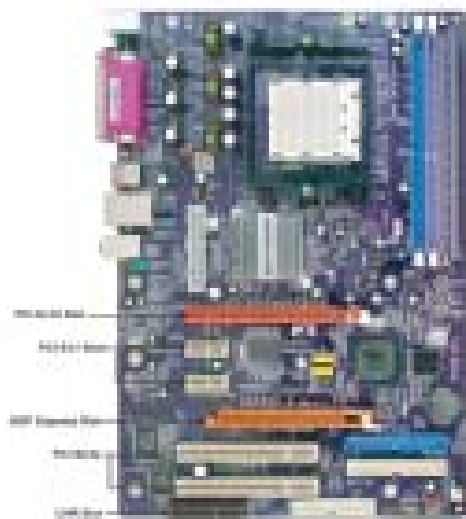
This connector supports the provided floppy drive ribbon cable. After connecting the single end to the onboard floppy connector, connect the remaining plugs on the other end to the floppy drives correspondingly.



## **Installing the Motherboard**

### ***Installing Add-on Cards***

The slots on this motherboard are designed to hold expansion cards and connect them to the system bus. Expansion slots are a means of adding or enhancing the motherboard's features and capabilities. With these efficient facilities, you can increase the motherboard's capabilities by adding hardware that performs tasks that are not part of the basic system.



**PCI-E1 Slot** The PCI Express x16 slot is fully compliant to the PCI Express Base Specification revision 1.0a.

**PCI-E2-3 Slots** The two PCI Express x1 slots are fully compliant to the PCI Express Base Specification revision 1.0a.

**AGPRO1 Slot** The AGP Express slot is used to install an AGP graphics card that emulates the AGP function. To get better performance and compatibility on our special designed AGPRO slot, we recommend users use one of the AGP graphics cards that have been tested by our company. See the "**AGP Express Graphics Cards Support List**" or visit our website at "<http://www.ecs.com.tw>" for the updated support list.

**PCI Slots** This motherboard is equipped with two standard PCI slots. PCI stands for Peripheral Component Interconnect and is a bus standard for expansion cards, which for the most part, is a supplement of the older ISA bus standard. The PCI slots on this board are PCI v2.2 compliant.

**CNR Slots** This slot is used to insert CNR card with Modem and Audio functionality.



*Before installing an add-on card, check the documentation for the card carefully. If the card is not Plug and Play, you may have to manually configure the card before installation.*

## **Installing the Motherboard**

Follow these instructions to install an add-on card:

- 1 Remove a blanking plate from the system case corresponding to the slot you are going to use.
- 2 Install the edge connector of the add-on card into the expansion slot. Ensure that the edge connector is correctly seated in the slot.
- 3 Secure the metal bracket of the card to the system case with a screw.



*For some add-on cards, for example graphics adapters and network adapters, you have to install drivers and software before you can begin using the add-on card.*

## Installing the Motherboard

Table A: AGP Express Graphics Cards Support List

VGA Chip	Model name	AGP
nVIDIA	ASUS AGP-V7100	4X
	ASUS V8200	
	ASUS V8170DDR	
	ELSA GLADIAC GTS DDR PRO/64M	
	ELSA GLADIAC MX	
	ELSA GLADIAC 725DVI	
	ELSA GLADIAC 925ViVo	
	GIGABYTE GV-GF2010D	
	WINFAST S325 TNT M64	
	WINFAST GeForce 2 Ultra	
	WINFAST A250TD/64M	
	ASUS V9280TD	8X
	ELSA GLADIAC FX935	
	ELSA GLADIAC FX938Ultra	
	ELSA GLADIAC FX 736	
	MSI Geforce4 Titanium4200	
MSI FX5900U-VTD256		
WINFAST A350TDH	4X	
ATI RADEON 8500 DDR		
ATI	ECS R9200LE- 64M	8X
	ECS R9200LE- 128M	
	ECS R9250-128T	
	GIGABYTE GV-R9000PRO	
	Power Color Radeon9500	
SIS	ECS AG200E4-D32	8X
	ECS AG200T8_D64	
	ECS AG400T8_D64	
	ECS-MM AG400T8_D64	



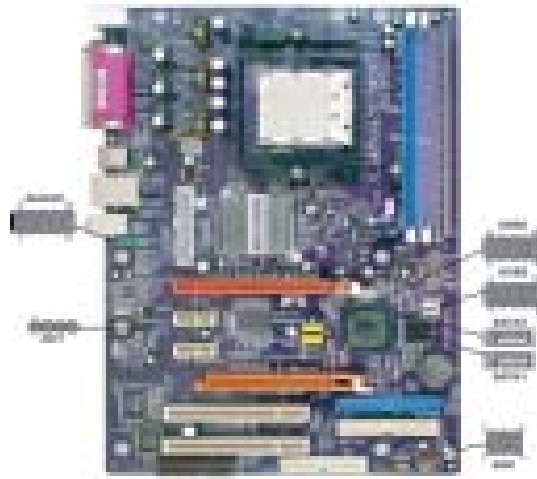
For the latest updates of the supported AGP VGA cards list, please visit ECS ELITEGROUP website for details.

ECS ELITEGROUP website: <http://www.ecs.com.tw>

## Installing the Motherboard

### Connecting Optional Devices

Refer to the following for information on connecting the motherboard's optional devices:



#### AUDIO2: Front Panel Audio header

This header allows the user to install auxiliary front-oriented microphone and line-out ports for easier access.

Pin	Signal Name	Function
1	AUD_MIC	Front Panel Microphone input signal
2	AUD_GND	Ground used by Analog Audio Circuits
3	AUD_MIC_BIAS	Microphone Power
4	AUD_VCC	Filtered +5V used by Analog Audio Circuits
5	AUD_F_R	Right Channel audio signal to Front Panel
6	AUD_RET_R	Right Channel Audio signal to Return from Front Panel
7	REVD	Reserved
8	Key	No Pin
9	AUD_F_L	Left Channel Audio signal to Front Panel
10	AUD_RET_L	Left Channel Audio signal to Return from Front Panel

#### CD1: CD Audio Input header

Pin	Signal Name	Function
1	CD in_L	CD In left channel
2	GND	Ground
3	GND	Ground
4	CD in_R	CD In right channel

## Installing the Motherboard

### USB2~3: Front Panel USB headers

The motherboard has four USB ports installed on the rear edge I/O port array. Additionally, some computer cases have USB ports at the front of the case. If you have this kind of case, use auxiliary USB connector to connect the front-mounted ports to the motherboard.

Pin	Signal Name	Function
1	USBPWR	Front Panel USB Power
2	USBPWR	Front Panel USB Power
3	USB_FP_P0-	USB Port 0 Negative Signal
4	USB_FP_P1-	USB Port 1 Negative Signal
5	USB_FP_P0+	USB Port 0 Positive Signal
6	USB_FP_P1+	USB Port 1 Positive Signal
7	GND	Ground
8	GND	Ground
9	Key	No pin
10	USB_FP_OC0	Overcurrent signal



Please make sure that the USB cable has the same pin assignment as indicated above. A different pin assignment may cause damage or system hang-up.

### SATA1~2: Serial ATA connectors

These connectors are used to support the new Serial ATA devices for the highest data transfer rates (150 MB/s), simpler disk drive cabling and easier PC assembly. It eliminates limitations of the current Parallel ATA interface. But maintains register compatibility and software compatibility with Parallel ATA.

Pin	Signal Name	Pin	Signal Name
1	Ground	2	TX+
3	TX-	4	Ground
5	RX-	6	RX+
7	Ground	-	-

### SIR1: Infrared header

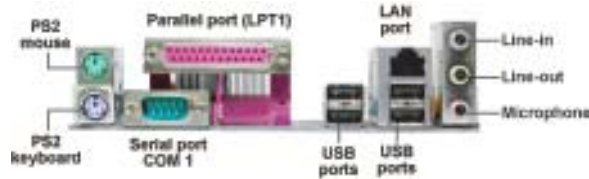
The mainboard supports an Infrared (SIR1) data port. Infrared port allows the wireless exchange of information between your computer and similarly equipped devices such as printers, laptops, Personal Digital Assistants (PDAs), cell phones, and other computers.

Pin	Signal Name	Function
1	Not Assigned	Not assigned
2	Key	No pin
3	+5V	IR Power
4	GND	Ground
5	IRTX	IrDA serial output
6	IRTX	IrDA serial input

## Installing the Motherboard

## Connecting I/O Devices

The backplane of the motherboard has the following I/O ports:



- PS2 Mouse** Use the upper PS/2 port to connect a PS/2 pointing device.
- PS2 Keyboard** Use the lower PS/2 port to connect a PS/2 keyboard.
- Parallel Port (LPT1)** Use LPT1 to connect printers or other parallel communications devices.
- Serial Port (COM1)** Use the COM port to connect serial devices such as mice or fax/modems.
- LAN Port (optional)** Connect an RJ-45 jack to the LAN port to connect your computer to the Network.
- USB Ports** Use the USB ports to connect USB devices.
- Audio Ports** Use the three audio ports to connect audio devices. The first jack is for stereo line-in signal. The second jack is for stereo line-out signal. The third jack is for microphone.

This concludes Chapter 2. The next chapter covers the BIOS.

## Installing the Motherboard



## Chapter 3

### *Using BIOS*

---

#### **About the Setup Utility**

The computer uses the latest American Megatrends BIOS with support for Windows Plug and Play. The CMOS chip on the motherboard contains the ROM setup instructions for configuring the motherboard BIOS.

The BIOS (Basic Input and Output System) Setup Utility displays the system's configuration status and provides you with options to set system parameters. The parameters are stored in battery-backed-up CMOS RAM that saves this information when the power is turned off. When the system is turned back on, the system is configured with the values you stored in CMOS.

The BIOS Setup Utility enables you to configure:

- Hard drives, diskette drives and peripherals
- Video display type and display options
- Password protection from unauthorized use
- Power Management features

The settings made in the Setup Utility affect how the computer performs. Before using the Setup Utility, ensure that you understand the Setup Utility options.

This chapter provides explanations for Setup Utility options.

#### ***The Standard Configuration***

A standard configuration has already been set in the Setup Utility. However, we recommend that you read this chapter in case you need to make any changes in the future.

This Setup Utility should be used:

- when changing the system configuration
- when a configuration error is detected and you are prompted to make changes to the Setup Utility
- when trying to resolve IRQ conflicts
- when making changes to the Power Management configuration
- when changing the password or making other changes to the Security Setup

#### ***Entering the Setup Utility***

When you power on the system, BIOS enters the Power-On Self Test (POST) routines. POST is a series of built-in diagnostics performed by the BIOS. After the POST routines are completed, the following message appears:

**Press DEL/F1 to enter SETUP**

Press the delete key or F1 to access the BIOS Setup Utility.

CMOS Setup Utility -- Copyright (C) 1985-2004, American Megatrends, Inc.

<ul style="list-style-type: none"> <li>▶ Standard CMOS Setup</li> <li>▶ Advanced Setup</li> <li>▶ Features Setup</li> <li>▶ Power Management Setup</li> <li>▶ PCI / Plug and Play Setup</li> <li>▶ BIOS Security Features</li> </ul>	<ul style="list-style-type: none"> <li>▶ CPU PnP Setup</li> <li>▶ Hardware Monitor</li> <li>Load Optimal Defaults</li> <li>Save Changes and Exit</li> <li>Discard Changes and Exit</li> </ul>
↑↓ ← → : Move    +/- : Value    Enter : Select    F1: General Help    ESC: Exit F8: Best Performance Settings    F9: Optimized Defaults    F10: Save	
Standard CMOS setup for changing time, date, hard disk type, etc.	
v02.56 (C)Copyright 1985-2004, American Mega trends, Inc.	

***BIOS Navigation Keys***

The BIOS navigation keys are listed below:

KEY	FUNCTION
<b>ESC</b>	Exits the current menu
<b>←↑↓→</b>	Scrolls through the items on a menu
<b>+/-/PU/PD</b>	Modifies the selected field's values
<b>F1</b>	Displays a screen that describes all key functions
<b>F9</b>	Loads the optimized default setting for better performance
<b>F10</b>	Saves the current configuration and exits setup

## Using BIOS

### ***Updating the BIOS***

You can download and install updated BIOS for this motherboard from the manufacturer's Web site. New BIOS provides support for new peripherals, improvements in performance, or fixes for known bugs. Install new BIOS as follows:

- 1 If your motherboard has a BIOS protection jumper, change the setting to allow BIOS flashing.
- 2 If your motherboard has an item called Firmware Write Protect in Advanced BIOS features, disable it. (Firmware Write Protect prevents BIOS from being overwritten.)
- 3 Create a bootable system disk. (Refer to Windows online help for information on creating a bootable system disk.)
- 4 Download the Flash Utility and new BIOS file from the manufacturer's Web site. Copy these files to the system diskette you created in Step 3.
- 5 Turn off your computer and insert the system diskette in your computer's diskette drive. (You might need to run the Setup Utility and change the boot priority items on the Advanced Setup page, to force your computer to boot from the floppy diskette drive first.)
- 6 At the A:\ prompt, type the Flash Utility program name and the filename of the new bios and then press <Enter>. Example: AMINF340.EXE 040706.ROM
- 7 When the installation is complete, remove the floppy diskette from the diskette drive and restart your computer. If your motherboard has a Flash BIOS jumper, reset the jumper to protect the newly installed BIOS from being overwritten. The computer will restart automatically.

### **Using BIOS**

When you start the Setup Utility, the main menu appears. The main menu of the Setup Utility displays a list of the options that are available. A highlight indicates which option is currently selected. Use the cursor arrow keys to move the highlight to other options. When an option is highlighted, execute the option by pressing <Enter>.

Some options lead to pop-up dialog boxes that prompt you to verify that you wish to execute that option. Other options lead to dialog boxes that prompt you for information.

Some options (marked with a triangle ►) lead to submenus that enable you to change the values for the option. Use the cursor arrow keys to scroll through the items in the submenu.

In this manual, default values are enclosed in parenthesis. Submenu items are denoted by a triangle ►.

## **Using BIOS**

### Standard CMOS Setup

This option displays basic information about your system.

CMOS Setup Utility - Copyright (C) 1985-2004, American Megatrends, Inc.  
Standard CMOS Setup

System Time	14: 02: 44	Help Menu
System Date	Wed 05/05/2004	
▶ Primary IDE Master	Hard Disk	Use [ENTER], [TAB] or [SHIFT-TAB] TO select a field.  Use [+] or [-] to configure system Time.
▶ Primary IDE Slave	Not Detected	
▶ Secondary IDE Master	Not Detected	
▶ Secondary IDE Slave	CD/DVD ROM	
▶ Third IDE Master (SATA1)	Not Detected	
▶ Fourth IDE Master (SATA2)	Not Detected	
Floppy A	1.44 MB 3 1/2"	
Floppy B	Disabled	

↑↓ ← → : Move Enter : Select +/- : Value F10: Save ESC: Exit  
F1: General help F9: Optimized Defaults

### Date and Time

The Date and Time items show the current date and time on the computer. If you are running a Windows OS, these items are automatically updated whenever you make changes to the Windows Date and Time Properties utility.

#### ▶ Primary/Secondary/Third IDE Master/Slave

Your computer has one IDE channel and each channel can be installed with one or two devices (Master and Slave). In addition, this motherboard supports four SATA channels and each channel allows one SATA device to be installed. Use these items to configure each device on the IDE channel.

CMOS Setup Utility - Copyright (C) 1985-2004, American Megatrends, Inc.  
Primary IDE Master

Primary IDE Master		Help Menu
Device: Hard Disk		
Vendor: ST36421A		Select the type of device connected to the system.
Size: 6.4GB		
LBA Mode: Supported		
Block Mode: 16Sectors		
PIO Mode: 4		
Async DMA: MultiWord DMA-2		
Ultra DMA: Ultra DMA-2		
S.M.A.R.T.: Supported		
Type	Auto	
LBA/Large Mode	Auto	
Block (Multi-Sector Transfer)	Auto	
PIO Mode	Auto	
DMA Mode	Auto	
S.M.A.R.T.	Auto	
32Bit Data Transfer	Enabled	

↑↓ ← → : Move Enter : Select +/- : Value F10: Save ESC: Exit  
F1: General help F9: Optimized Defaults

## Using BIOS

**Type (Auto)**

This item enables users to select the type of device connected to the system.

**LBA/Large Mode (Auto)**

Use this item to select the LBA/Large mode for a hard disk > 512 MB under DOS and Windows. For Netware and UNIX users, select [Disabled] to disable the LBA/Large Mode.

**Block (Multi-Sector Transfer) (Auto)**

Enable this item to enhance hard disk performance by reading or writing more data during each transfer. This default setting is Auto.

**PIO/DMA Mode (Auto)**

This item enables users to select PIO/DMA Mode.

**S.M.A.R.T. (Auto)**

The S.M.A.R.T (Self-Monitoring, Analysis, and Reporting Technology) system is a diagnostics technology that monitors and predicts device performance. S.M.A.R.T. software resides on both the disk drive and the host computer.

**32Bit Data Transfer (Enabled)**

Use this item to enable 32-bit access to maximize the IDE hard disk data transfer rate. Press <Esc> to return to the IDE Configuration page.

**Floppy A/B**

These items set up size and capacity of the floppy diskette drive(s) installed in the system.

Press <Esc> to return to the main menu setting page.

**Advanced Setup**

This page sets up more advanced information about your system. Handle this page with caution. Any changes can affect the operation of your computer.

CMOS Setup Utility - Copyright (C) 1985-2004, American Megatrends, Inc.  
Advanced Setup

Quick Boot	Enabled	Help Menu  Allows BIOS to skip certain tests while booting. This will decrease the time needed to boot the system.
1st Boot Device	ST36421A	
2nd Boot Device	CD-540E	
3rd Boot Device	1st Floppy Drive	
Try Other Boot Device	Yes	
Bootup num-Luck	On	
Boot To OS/2 > 64MB	No	
DRAM CAS# Latency	SPD	
AGP Aperture Size	64MB	
Auto Detect DIMM/PCI Clk	Enabled	
Spread Spectrum	Disabled	
Cool 'N' Quiet	Enabled	

↑↓ ← → : Move Enter : Select +/- : Value F10: Save ESC: Exit  
F1: General help F9: Optimized Defaults

**Quick Boot (Enabled)**

If you enable this item, the system starts up more quickly because of the elimination of some of the power-on test routines.

**Using BIOS**

**1st/2nd/3rd Boot Device**

Use this item to determine the device order the computer used to look for an operating system to load at start-up time. The devices showed here will be different depending on the exact devices installed on your motherboard.

**Try Other Boot Device (Yes)**

If you enable this item, the system will also search for other boot devices if it fails to find an operating system from the first boot device.

**BootUp Num-Lock (On)**

This item determines if the Num Lock key is active or inactive at system start-up time.

**Boot To OS/2 > 64MB (No)**

This BIOS feature determines how systems with more than 64MB of memory are managed. If you are using an older version of the IBM OS/2 operating system, you should select Yes.

**DRAM CAS# Latency (SPD)**

This item allows you to set the DRAM timing defined by the Serial Presence Detect electrical.

**AGP Aperture Size (64MB)**

This item defines the size of aperture if you use an AGP graphics adapter. The AGP aperture refers to a section of the PCI memory address range used for graphics memory. We recommend that you leave this item at the default value.

**Auto Detect DIMM/PCI Clk (Enabled)**

When this item is enabled, BIOS will disable the clock signal of free DIMM/PCI slots.

**Spread Spectrum (Disabled)**

If you enable spread spectrum, it can significantly reduce the EMI (Electro-Magnetic interface) generated by the system.

**Cool N'Quiet (Enabled)**

This item helps the system lower the frequency when CPU idles. When the frequency decreases, the temperature will drop automatically as well.

Press <Esc> to return to the main menu setting page.

## Features Setup

This page sets up some parameters for peripheral devices connected to the system.

CMOS Setup Utility - Copyright (C) 1985-2004, American Megatrends, Inc.  
Features Setup

OnBoard Floppy Controller	Enabled	Help Menu
Serial Port1 Address	3F8/IRQ4	
Onboard IR Port	Disabled	Allow BIOS to Enable or Disable Floppy Controller.
Parallel Port Address	378	
Parallel Port Mode	ECP	
ECP Mode DMA Channel	DMA3	
Parallel Port IRQ	IRQ7	
OnBoard PCI IDE Controller	Both	
Onboard SATA-IDE	RAID	
Audio Device	Enabled	
Modem Device	Auto	
Ethernet Device	Enabled	
Onboard USB Function	Enabled	
USB Function For DOS	Disabled	

↑↓ ← → : Move    Enter : Select    +/-: Value    F10: Save    ESC: Exit  
 F1: General help    F9: Optimized Defaults

### OnBoard Floppy Controller (Enabled)

Use this item to enable or disable the onboard floppy disk drive interface.

### Serial Port1 Address (3F8/IRQ4)

Use this item to enable or disable the onboard COM1 serial port, and to assign a port address.

### Onboard IR Port (Disabled)

Use this item to enable or disable the onboard IR port function.

### Parallel Port Address (378)

Use this item to enable or disable the onboard Parallel port, and to assign a port address.

### Parallel Port Mode (ECP)

Use this item to select the parallel port mode. You can select Normal (Standard Parallel Port), ECP (Extended Capabilities Port), EPP (Enhanced Parallel Port), or EPP & ECP.

### ECP Mode DMA Channel (DMA3)

Use this item to assign the DMA Channel under ECP Mode function.

### Parallel Port IRQ (IRQ7)

Use this item to assign IRQ to the parallel port.

### OnBoard PCI IDE Controller (Both)

Use this item to enable or disable either or both of the onboard Primary and Secondary IDE channels.

## Using BIOS

**OnBoard SATA-IDE (RAID)**

Use this item to set the SATA-IDE function mode.

**Audio Device (Enabled)**

Use this item to enable or disable the onboard audio device.

**Modem Device (Enabled)**

Use this item to enable or disable the onboard modem device.

**Ethernet Device (Enabled)**

Use this item to enable or disable the onboard Ethernet.

**Onboard USB Function (Enabled)**

Enable this item if you plan to use the USB ports on this motherboard.

**USB Function For DOS (Disabled)**

Enable this item if you plan to use the USB ports on this motherboard in a DOS environment.

Press <Esc> to return to the main menu setting page.

**Power Management Setup**

This page sets up some parameters for system power management operation.

CMOS Setup Utility - Copyright (C) 1985-2004, American Megatrends, Inc.  
Power Management Setup

ACPI Aware O/S	Yes	Help Menu  Yes / No ACPI support for Operating System.  YES: If OS supports ACPI.  NO: If OS does not support ACPI.
Power Management	Enabled	
Suspend mode	S1	
Suspend Time Out	Disabled	
Resume on RTC Alarm	Disabled	
LAN/Ring Power On	Disabled	
Keyboard Power On	Disabled	
Wake-Up Key	Any Key	
S3 USB Device Wakeup Function	Disabled	

↑↓←→ : Move    Enter : Select    +/-: Value    F10: Save    ESC: Exit  
F1: General help    F9: Optimized Defaults

**ACPI Aware O/S (Yes)**

This item supports ACPI (Advanced Configuration and Power Management Interface). Use this item to enable or disable the ACPI feature.

**Power Management (Enabled)**

Use this item to enable or disable a power management scheme. If you enable power management, you can use this item below to set the power management operation. Both APM and ACPI are supported.

**Using BIOS**



**Suspend Mode (S1)**

Use this item to define how your system suspends. In the default, S1, the suspend mode is equivalent to a software power down. If you select S3, the suspend mode is a suspend to RAM, i.e., the system shuts down with the exception of a refresh current to the system memory.

**Suspend Time Out (Disabled)**

This item sets up the timeout for Suspend mode in minutes. If the time selected passes without any system activity, the computer will enter power-saving Suspend mode.

**Resume on RTC Alarm (Disabled)**

The system can be turned off with a software command. If you enable this item, the system can automatically resume at a fixed time based on the system's RTC (realtime clock). Use the items below this one to set the date and time of the wake-up alarm. You must use an ATX power supply in order to use this feature.

**LAN/Ring Power On (Disabled)**

The system can be turned off with a software command. If you enable this item, the system can automatically resume if there is an incoming call on the Modem/Ring, or traffic on the network adapter. You must use an ATX power supply in order to use this feature.

**Keyboard Power On (Disabled)**

If you enable this item, system can automatically resume by pressing any keys or power key or typing in the password on the keyboard. You must use an ATX power supply in order to use this feature.

**Wake-Up Key (Any Key)**

This item set the wake-up key to wake up the system.

**S3 USB Device Wakeup Function (Disabled)**

This item enables or disables the wake-up function of USB device.

Press <Esc> to return to the main menu setting page.

**PCI / Plug and Play Setup**

This page sets up some parameters for devices installed on the PCI bus and those utilizing the system plug and play capability.

CMOS Setup Utility - Copyright (C) 1985-2004, American Megatrends, Inc.  
PCI / Plug and Play Setup

Primary Graphics Adapter	PCI-E VGA	Help Menu
Allocate IRQ to PCI VGA	Yes	
PCI IDE BusMaster	Disabled	
		Options
		PCI VGA
		PCI-E VGA
		AGP Express

↑↓ ← → : Move Enter : Select +/-: Value F10: Save ESC: Exit  
F1: General help F9: Optimized Defaults

**Primary Graphics Adapter (PCI-E VGA)**

This item indicates if the primary graphics adapter uses the PCI-E VGA, PCI VGA, or AGP Express.

**Allocate IRQ to PCI VGA (Yes)**

If this item is enabled, an IRQ will be assigned to the PCI VGA graphics system. You set this value to No to free up an IRQ.

**PCI IDE BusMaster (Disabled)**

This item enables or disabled the DMA under DOS mode. We recommend you to leave this item at the default value.

Press <Esc> to return to the main menu setting page.

### ***BIOS Security Features***

This page helps you install or change a password.

CMOS Setup Utility - Copyright (C) 1985-2004, American Megatrends, Inc.  
BIOS Security Features

Security Settings	Help Menu
Supervisor Password : Not Installed	Install or Change the password.
Change Supervisor Password <b>Press Enter</b>	

↑↓←→ : Move    Enter : Select    +/- : Value    F10: Save    ESC: Exit  
F1: General help    F9: Optimized Defaults

#### **Supervisor Password (Not Installed)**

This item indicates whether a supervisor password has been set. If the password has been installed, *Installed* displays. If not, *Not Installed* displays.

#### **Change Supervisor Password (Press Enter)**

You can select this option and press <Enter> to access the sub menu. You can use the sub menu to change the supervisor password.

Press <Esc> to return to the main menu setting page.

### CPU PnP Setup

This page helps you manually configure the CPU of this motherboard. The system will automatically detect the type of installed CPU and make the appropriate adjustments to these items on this page.

CMOS Setup Utility - Copyright (C) 1985-2004, American Megatrends, Inc.  
CPU PnP Setup

CPU Type : AMD Athlon (tm) 64 Processor 3000+ CPU Over-clocking Func. : Disabled CPU Frequency : 200MHz DRAM Frequency : SPD Memory Voltage : Auto	Help Menu <hr/> Options Disabled Enabled
--	---

↑↓ ← → : Move Enter : Select +/- : Value F10: Save ESC: Exit  
F1: General help F9: Optimized Defaults

#### CPU Type

This item indicates the information of the CPU installed in your system. The information varies according to the CPU installed onboard.

#### CPU Over-clocking Func. (Disabled)

This item decides the CPU over-clocking function/frequency installed in your system. If the over-clocking fails, please turn off the system power. And then, hold the PageUp key (similar to the Clear CMOS function) and turn on the power, the BIOS will recover the safe default.

#### CPU Frequency

This item indicates the current CPU frequency. Users can not make any change to this item. Please noted that the frequency will be varied with different CPU.

#### DRAM Frequency (SPD)

This item enables users to adjust the DRAM frequency. The default setting is SPD and we recommend users leave the setting unchanged. Modify it at will may cause the system to be unstable.

#### Memory Voltage (Auto)

This item enables users to adjust the DRAM voltage. The default setting is Auto and we recommend users leave the setting unchanged. Modify it at will may cause the system to be unstable.

Press <Esc> to return to the main menu setting page.

## Using BIOS

### Hardware Monitor

This page helps you set up some parameters for the hardware monitoring function of this motherboard.

CMOS Setup Utility - Copyright (C) 1985-2004, American Megatrends, Inc.  
Hardware Monitor

-- System Hardware Monitor --		Help Menu
Vcore	: 1.392 V	Enables hardware health monitoring Device.
Vlidd	: 1.472 V	
Vdimm	: 2.512V	
Vcc5V	: 5.053V	
SB3V	: 3.216V	
CPU FAN1 Speed	: 2463 RPM	
SYSTEM FAN1 Speed	: 0 RPM	
CPU Temperature	: 36°C/96°F	
System Temperature	: 37°C/98°F	

↑↓ ← → : Move    Enter : Select    +/- : Value    F10: Save    ESC: Exit  
F1: General help    F9: Optimized Defaults

### System Hardware Monitor

These items display the monitoring of the overall onboard hardware health events, such as CPU voltage, DRAM voltage, CPU temperature, system temperature, CPU fan, and system fan,...etc.

Press <Esc> to return to the main menu setting page.

***Load Optimal Defaults***

This option opens a dialog box that lets you install stability-oriented defaults for all appropriate items in the Setup Utility. Select [OK] and then press <Enter> to install the defaults. Select [Cancel] and then press <Enter> to not install the defaults.



*Users are highly recommended to “Load Optimal Defaults” after clearing CMOS is done.*

***Save Changes and Exit***

Highlight this item and press <Enter> to save the changes that you have made in the Setup Utility and exit the Setup Utility. When the Save and Exit dialog box appears, select [OK] to save and exit, or select [Cancel] to return to the main menu.

***Discard Changes and Exit***

Highlight this item and press <Enter> to discard any changes that you have made in the Setup Utility and exit the Setup Utility. When the Exit Without Saving dialog box appears, select [OK] to discard changes and exit, or select [Cancel] to return to the main menu.



*If you have made settings that you do not want to save, use the “Discard Changes and Exit” item and select [OK] to discard any changes you have made.*

## Chapter 4

### ***Using the Motherboard Software***

---

#### **About the Software CD-ROM**

The support software CD-ROM that is included in the motherboard package contains all the drivers and utility programs needed to properly run the bundled products. Below you can find a brief description of each software program, and the location for your motherboard version. More information on some programs is available in a README file, located in the same directory as the software.



*Never try to install all software from folder that is not specified for use with your motherboard.*

Before installing any software, always inspect the folder for files named README.TXT, INSTALL.TXT, or something similar. These files may contain important information that is not included in this manual.

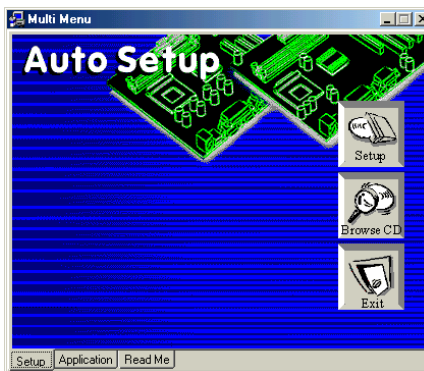
#### **Auto-installing under Windows 98/ME/2000/XP**

The Auto-install CD-ROM makes it easy for you to install the drivers and software for your motherboard.



*If the Auto-install CD-ROM does not work on your system, you can still install drivers through the file manager for your OS (for example, Windows Explorer). Refer to the Utility Folder Installation Notes later in this chapter.*

The support software CD-ROM disc loads automatically under Windows 98/ME/2000/XP. When you insert the CD-ROM disc in the CD-ROM drive, the autorun feature will automatically bring up the install screen. The screen has three buttons on it, Setup, Browse CD and Exit.



*If the opening screen does not appear; double-click the file "setup.exe" in the root directory.*

### **Using the Motherboard Software**

### Setup Tab

<b>Setup</b>	Click the <b>Setup</b> button to run the software installation program. Select from the menu which software you want to install.
<b>Browse CD</b>	<p>The <b>Browse CD</b> button is the standard Windows command that allows you to open Windows Explorer and show the contents of the support CD.</p> <p>Before installing the software from Windows Explorer, look for a file named README.TXT, INSTALL.TXT or something similar. This file may contain important information to help you install the software correctly.</p> <p>Some software is installed in separate folders for different operating systems, such as DOS, WIN NT, or WIN98/95. Always go to the correct folder for the kind of OS you are using.</p> <p>In install the software, execute a file named SETUP.EXE or INSTALL.EXE by double-clicking the file and then following the instructions on the screen.</p>
<b>Exit</b>	The <b>EXIT</b> button closes the Auto Setup window.

### Application Tab

Lists the software utilities that are available on the CD.

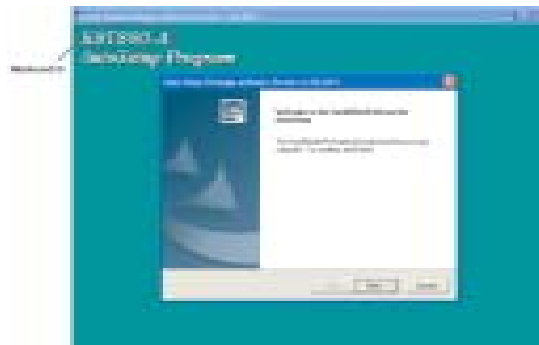
### Read Me Tab

Displays the path for all software and drivers available on the CD.

### Running Setup

Follow these instructions to install device drivers and software for the motherboard:

1. Click **Setup**. The installation program begins:



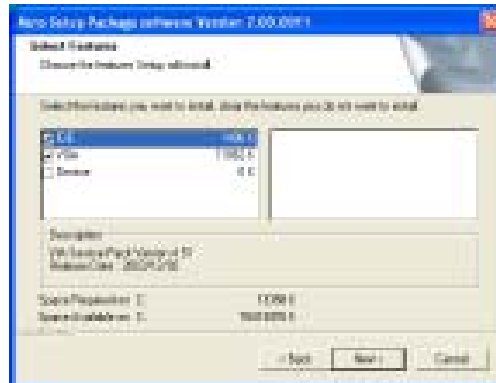
The following screens are examples only. The screens and driver lists will be different according to the motherboard you are installing.

The motherboard identification is located in the upper left-hand corner.

## Using the Motherboard Software



2. Click **Next**. The following screen appears:



3. Check the box next to the items you want to install. The default options are recommended.  
4. Click **Next** run the Installation Wizard. An item installation screen appears:



5. Follow the instructions on the screen to install the items.

Drivers and software are automatically installed in sequence. Follow the onscreen instructions, confirm commands and allow the computer to restart a few times to complete the installation.

## Using the Motherboard Software

## Manual Installation

Insert the CD in the CD-ROM drive and locate the PATH.DOC file in the root directory. This file contains the information needed to locate the drivers for your motherboard.

Look for the chipset and motherboard model; then browse to the directory and path to begin installing the drivers. Most drivers have a setup program (SETUP.EXE) that automatically detects your operating system before installation. Other drivers have the setup program located in the operating system subfolder.

If the driver you want to install does not have a setup program, browse to the operating system subfolder and locate the readme text file (README.TXT or README.DOC) for information on installing the driver or software for your operating system.

## Utility Software Reference

All the utility software available from this page is Windows compliant. They are provided only for the convenience of the customer. The following software is furnished under license and may only be used or copied in accordance with the terms of the license.



*These software(s) are subject to change at anytime without prior notice. Please refer to the support CD for available software.*

### **AMI/AWARD Flash Memory Utility**

*This utility lets you erase the system BIOS stored on a Flash Memory chip on the motherboard, and lets you copy an updated version of the BIOS to the chip. Proceed with caution when using this program. If you erase the current BIOS and fail to write a new BIOS, or write a new BIOS that is incorrect, your system will malfunction. Refer to Chapter 3, Using BIOS for more information.*

### **WinFlash Utility**

The Award WinFlash utility is a Windows version of the DOS Award BIOS flash writer utility. The utility enables you to flash the system BIOS stored on a Flash Memory chip on the motherboard while in a Windows environment. This utility is currently available for WINXP\ME\2000\98SE. To install the WinFlash utility, run WINFLASH.EXE from the following directory: \UTILITY\WINFLASH 1.51

This concludes Chapter 4. Refer to the next chapter for information about SATA RAID Setup.

## Chapter 5

### ***VIA VT8237 SATA RAID Setup Guide***

---

#### **VIA RAID Configurations**

The motherboard includes a high performance Serial ATA RAID controller integrated in the VIA VT8237 Southbridge chipset. It supports RAID 0, RAID 1 and JBOD with two independent Serial ATA channels.

**RAID:** (Redundant Array of Independent Disk Drives) use jointly several hard drives to increase data transfer rates and data security. It depends on the number of drives present and RAID function you select to fulfill the security or performance purposes or both.

**RAID 0** (called data striping) optimizes two identical hard disk drives to read and write data in parallel, interleaved stacks. Two hard disks perform the same work as a single drive but at a sustained data transfer rate, double that of a single disk alone, thus improving data access and storage.

**RAID 1** (called data mirroring) copies and maintains an identical image of data from one drive to a second drive. If one drive fails, the disk array management software directs all applications to the surviving drive as it contains a complete copy of the data in the other drive. This RAID configuration provides data protection and increases fault tolerance to the entire system.

**JBOD:** (Just a Bunch of Drives) Also known as “Spanning”. Two or more hard drives are required. Several hard disk types configured as a single hard disk. The hard drives are simply hooked up in series. This expands the capacity of your drive and results in a useable total capacity. However, JBOD will not increase any performance or data security.

#### ***Install the Serial ATA (SATA) hard disks***

The VIA VT8237 Southbridge chipset supports Serial ATA hard disk drives. For optimal performance, install identical drives of the same model and capacity when creating a RAID set.

- If you are creating a RAID 0 (striping) array of performance, use two new drives.
- If you are creating a RAID 1 (mirroring) array for protection, you can use two new drives or use an existing drive and a new drive (the new drive must be of the same size or larger than the existing drive). If you use two drives of different sizes, the smaller capacity hard disk will be the base storage size. For example, one hard disk has an 80GB storage capacity and the other hard disk has 60GB storage capacity, the maximum storage capacity for the RAID 1 set is 60GB.

Follow these steps to install the SATA hard disks for RAID configuration.

- i Before setting up your new RAID array, verify the status of your hard disks. Make sure the Master/Slave jumpers are configured properly.
- ii Both the data and power SATA cables are new cables. You cannot use older 40-pin 80-conductor IDE or regular IDE power cables with Serial ATA drives. Installing Serial ATA (SATA) hard disks require the use of new Serial ATA cable (4-conductor) which supports the Serial ATA protocol and a Serial ATA power cable.
- iii Either end of the Serial ATA data cable can be connected to the SATA hard disk or the SATA connector on the motherboard.

### **VIA VT8237 SATA RAID Setup Guide**

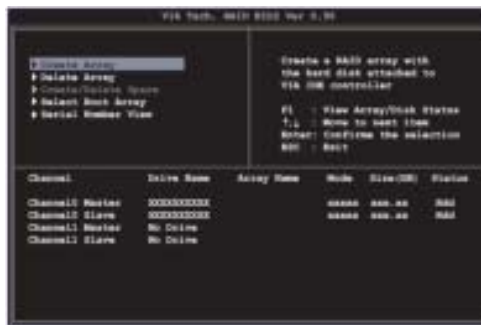
- 1 Install the Serial ATA hard disks into the drive bays.
- 2 Connect one end of the Serial ATA cable to the motherboard's primary Serial ATA connector (SATA1).
- 3 Connect the other end of Serial ATA cable to the master Serial ATA hard disk.
- 4 Connect one end of the second Serial ATA cable to the motherboard's secondary Serial ATA connector (SATA2).
- 5 Connect the other end of Serial ATA cable to the secondary Serial ATA hard disk.
- 6 Connect the Serial ATA power cable to the power connector on each drive.
- 7 Proceed to section "Entering VIA Tech RAID BIOS Utility" for the next procedure.

### Entering VIA Tech RAID BIOS Utility

- 1 Boot-up your computer.
- 2 During POST, press <TAB> to enter VIA RAID configuration utility. The following menu options will appear.



*The RAID BIOS information on the setup screen shown is for reference only. What you see on your screen may not be exactly the same as shown.*

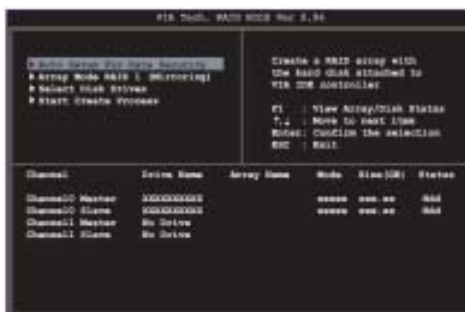


On the upper-right side of the screen is the message and legend box. The keys on the legend box allow you to navigate through the setup menu options. The message describes the function of each menu item. The following lists the keys found in the legend box with their corresponding functions.

F1	View Array
↑↓	Move to the next item
Enter	Confirm the selection
ESC	Exit

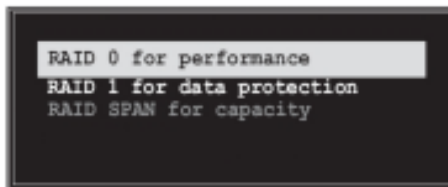
### Create Array

- 1 In the VIA RAID BIOS utility main menu, select **Create Array** then press the <Enter> key. The main menu items on the upper-left corner of the screen are replaced with create array menu options.



### RAID 0 for performance

- 1 Select the second option item **Array Mode**, then press the <Enter> key. The RAID system setting pop-up menu appears.



- 2 Select **RAID 0 for performance** from the menu and press <Enter>. From this point, you may choose to auto-configure the RAID array by selecting Auto Setup for Performance or manually configure the RAID array for striped sets. If you want to manually configure the RAID array continue with next step, otherwise, proceed to step #5.
- 3 Select **Select Disk Drives**, then press <Enter>. Use arrow keys to select disk drive/s, then press <Enter> to mark selected drive. An asterisk is placed before the selected drive.
- 4 Select **Block Size**, then press <Enter> to set array block size. Lists of valid array block sizes are displayed on a pop-up menu.



**Tip** For server systems, it is recommended to use a lower array block size. For multimedia computer systems used mainly for audio and video editing, a higher array block size is recommended for optimum performance.

Use arrow keys to move selection bar on items and press <Enter> to select.

## VIA VT8237 SATA RAID Setup Guide

- 5 Select Start Create Process and press <Enter> to setup hard disk for RAID system. The following confirmation appears:

**The same confirmation message appears when the  
Auto Setup for Performance option is selected.**

```
The data on the selected disks will
be destroyed. Continue? Press Y/N
```

Press “Y” to confirm or “N” to return to the configuration options.

### ***RAID 1 for data protection***

- 1 Select the second option item Array Mode, then press the <Enter> key. The RAID system setting pop-up menu appears.

```
RAID 0 for performance
RAID 1 for data protection
RAID SPAN for capacity
```

- 2 Select RAID 1 for data protection from the menu and press <Enter>. Select next task from pop-up menu. The task Create only creates the mirrored set without creating a backup. Create and duplicate creates both mirrored set and backup.

```
Create only
Create and duplicate
```

- 3 Select task and press <Enter>. The screen returns to Create Array menu items. From this point, you may choose to auto-configure the RAID array by selecting Auto Setup for Data Security or manually configure the RAID array for mirrored sets. If you want to manually configure the RAID array continue with next step, otherwise, proceed to step #5.
- 4 Select Select Disk Drives, then press <Enter>. Use arrow keys to select disk drive/s, then press <Enter> to mark selected drive. (An asterisk is placed before a selected drive.)
- 5 Select Start Create Process and press <Enter> to setup hard disk for RAID system. The following confirmation message appears:

**The same confirmation message appears when the  
Auto Setup for Performance option is selected.**

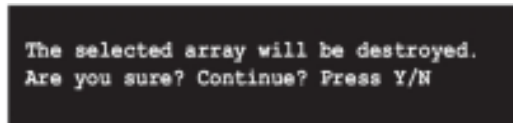
```
The data on the selected disks will
be destroyed. Continue? Press Y/N
```

Press “Y” to confirm or “N” to return to the configuration options.

## **VIA VT8237 SATA RAID Setup Guide**

### Delete Array

- 1 In the VIA RAID BIOS utility main menu, select **Delete Array** then press the <Enter> key. The focus is directed to the list of channel used for IDE RAID arrays.
- 2 Press the <Enter> key to select a RAID array to delete. The following confirmation message appears.



Press “Y” to confirm or “N” to return to the configuration options.

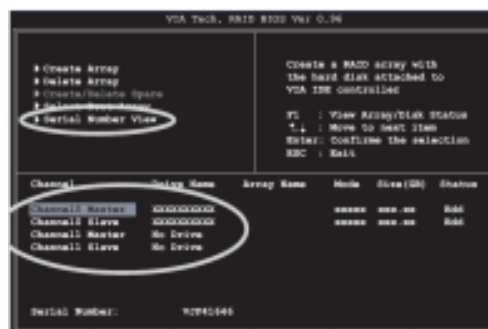
### Select Boot Array

- 1 In the VIA RAID BIOS utility main menu, select Select Boot Array then press the <Enter> key. The focus is directed to the list of channel used for IDE RAID arrays.
- 2 Press the <Enter> key to select a RAID array for boot. The Status of the selected array will change to Boot. Press <ESC> key to go return to menu items. Follow the same procedure to deselect the boot array.



### Serial Number View

- 1 In the VIA RAID BIOS utility main menu, select Serial Number View then press the <Enter> key. The focus is directed to the list of channel used for IDE RAID arrays. Move the selection bar on each item and the serial number is displayed at the bottom of the screen. This option is useful for identifying same model disks.



### Duplicate Critical RAID 1 Array

When booting up the system, BIOS will detect if the RAID 1 array has any inconsistencies between user data and backup data. If BIOS detects any inconsistencies, the status of the disk array will be marked as critical, and BIOS will prompt the user to duplicate the RAID 1 in order to ensure the backup data consistency with the user data.

```

Critical RAID 1                                     Critical Status
-----
Continue to boot                                  The RAID 1 array needs to
                                                  be duplicated to ensure
                                                  data consistency.
                                                  Fault Not Found:
                                                  Channel 1 Device 0 Fault

Remaining members of the failed array
-----
Channel Device      Drive Name      Array Name      Mode      Size(Gb)  Status
-----
Channel0 Device0    ACS100RW000000  Array0          RAID 100  38.34     Mirror
Channel0 Device0    ACS100RW000000  Array0          RAID 100  38.34     Source

Note:
1)Press <ESC> to Exit.
2)After Execute,Press <TAB> immediately can into Utility Window!

```

If user selects **Continue to boot**, it will enable duplicating the array after booting into OS.

### Rebuild Broken RAID 1 Array

When booting up the system, BIOS will detect if any member disk drives of RAID has failed or is absent. If BIOS detects any disk drive failures or missing disk drives, the status of the array will be marked as broken.

If BIOS detects a broken RAID 1 array but there is a spare hard drive available for rebuilding the broken array, the spare hard drive will automatically become the mirroring drive. BIOS will show a main interface just like a duplicated RAID 1. Selecting **Continue to boot** enables the user to duplicate the array after booting into operating system.

If BIOS detects a broken RAID 1 array but there is no spare hard drive available for rebuilding the array, BIOS will provide several operations to solve such problems.

```

Broken RAID 1                                     Critical Status
-----
Power off and check the failed drive
Destroy the Mirroring Relationship
Choose replacement drive and rebuild
Continue to boot                                  A disk member of a mirroring
                                                  array has failed or is not
                                                  responding. The array is
                                                  stilling functional but fault
                                                  tolerance is disabled.

Remaining members of the failed array
-----
Channel Device      Drive Name      Array Name      Mode      Size(Gb)  Status
-----
Channel0 Device0    IC35L040RW007-0  Array0          RAID 100  38.34     Broken

Note:
1)Press <ESC> to Exit.
2)After Execute,Press <TAB> immediately can into Utility Window!

```



### 1. Power off and Check the Failed Drive:

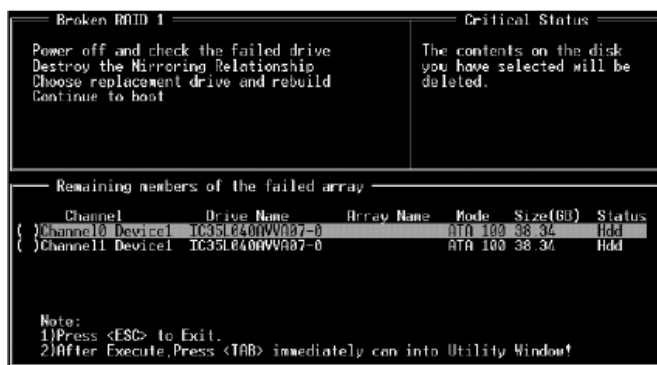
This item turns off the computer and replaces the failed hard drive with a good one. If your computer does not support APM, you must turn off your computer manually. After replacing the hard drive, boot into BIOS and select **Choose replacement drive and rebuild** to rebuild the broken array.

### 2. Destroy the Mirroring Relationship:

This item cancels the data mirroring relationship of the broken array. For broken RAID 1 arrays, the data on the surviving disk will remain after the destroy operation. However, **Destroy the Mirroring Relationship** is not recommended because the data on the remaining disk will be lost when the hard drive is used to create another RAID 1 array.

### 3. Choose Replacement Drive and Rebuild:

This item enables users to select an already-connected hard drive to rebuild the broken array. After choosing a hard drive, the channel column will be activated.



Highlight the target hard drive and press <Enter>, a warning message will appear. Press **Y** to use that hard drive to rebuild, or press **N** to cancel. Please note selecting option **Y** will destroy all the data on the selected hard drive.

### 4. Continue to boot:

This item enables BIOS to skip the problem and continue booting into OS.

## Installing RAID Software & Drivers

### *Install Driver in Windows OS*

#### **New Windows OS (2000/XP/NT4) Installation**

The following details the installation of the drivers while installing Windows XP.

- 1 Start the installation:  
Boot from the CD-ROM. Press **F6** when the message "Press F6 if you need to install third party SCSI or RAID driver" appears.
- 2 When the Windows Setup window is generated, press **S** to specify an Additional Device(s).
- 3 Insert the driver diskette **VIA VT8237 Disk Driver** into drive A: and press <Enter>.
- 4 Depending on your operation system, choose **VIA Serial ATA RAID Controller (Windows XP)**, **VIA Serial ATA RAID Controller (Windows 2000)** or **VIA Serial ATA RAID Controller (Windows NT4)** from the list that appears on Windows XP Setup screen, press the <Enter> key.
- 5 Press <Enter> to continue with installation or if you need to specify any additional devices to be installed, do so at this time. Once all devices are specified, press <Enter> to continue with installation.
- 6 From the Windows XP Setup screen press the <Enter> key. Setup will now load all device files and the continue the Windows XP installation.

#### **Existing Windows XP Driver Installation**

- 1 Insert the ECS CD into the CD-ROM drive.
- 2 The CD will auto-run and the setup screen will appear.
- 3 Under the Driver tab, click on **VIA SATA RAID Utility**.
- 4 The drivers will be automatically installed.

#### **Confirming Windows XP Driver Installation**

- 1 From Windows XP, open the **Control Panel** from **My Computer** followed by the System icon.
- 2 Choose the **Hardware** tab, then click the **Device manager** tab.
- 3 Click the "+" in front of the **SCSI and RAID Controllers** hardware type. The driver **VIA IDE RAID Host Controller** should appear.

### ***Installation of VIA SATA RAID Utility***

The VIA SATA RAID Utility is the software package that enables high-performance RAID 0 arrays in the Windows\*XP operating system. This version of VIA SATA RAID Utility contains the following key features:

- Serial ATA RAID driver for Windows XP
- VIA SATA RAID utility
- RAID0 and RAID1 functions

Insert the ECS CD and click on the **Setup** to install the software.

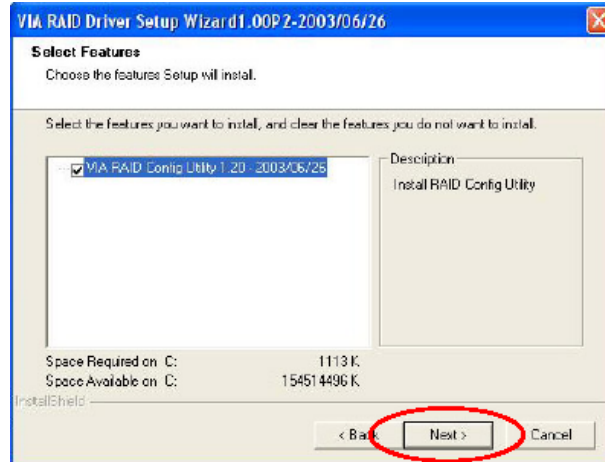


The **InstallShield Wizard** will begin automatically for installation. Click on the **Next** button to proceed the installation in the welcoming window.



## VIA VT8237 SATA RAID Setup Guide


Put a check mark in the check box to install the feature you want. Then click **Next** button to proceed the installation.



## Using VIA RAID Tool

Once the installation is complete, go to Start---> Programs---> VIA---> raid\_tool.exe to enable VIA RAID Tool.



After the software is finished installation, it will automatically started every time Windows is initiated. You may double-click on the  icon shown in the system tray of the tool bar to launch the **VIA RAID Tool** utility.



The main interface is divided into two windows and the toolbar above contain the main functions. Click on these toolbar buttons to execute their specific functions. The left windowpane displays the controller and disk drives and the right windowpane displays the details of the controller or disk drives. The available features are as following:



View by Controller



View by Devices





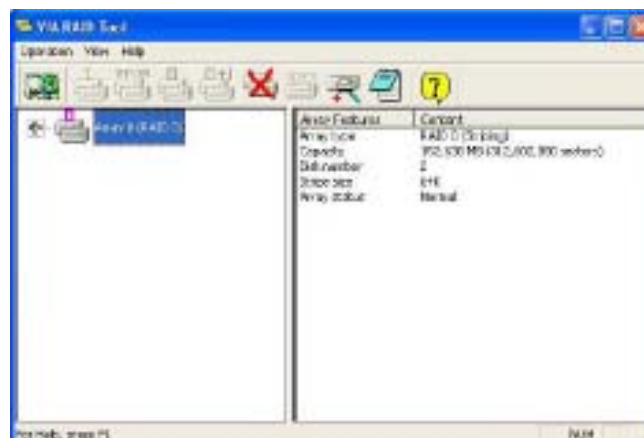
View Event log



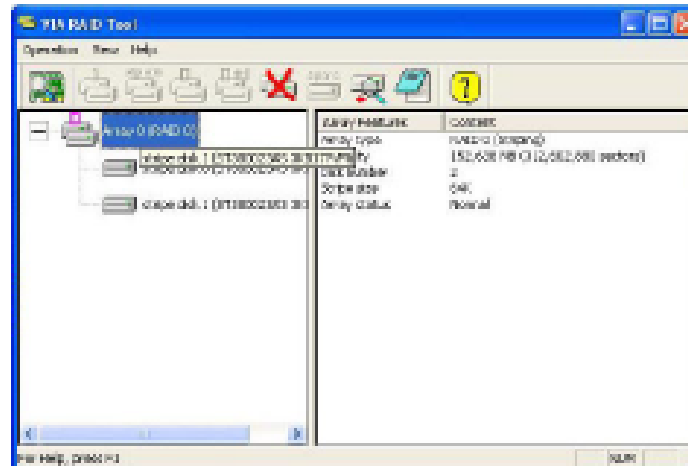
Help Topics

It means that VT8237 SATA RAID only has the feature of monitoring the statuses of RAID 0 and RAID 1.

Click on  or  button to determine the viewing type of left windowpane. There are two viewing types: By controllers and by device. Click on the object in the left windowpane to display the status of the object in the right windowpane. The following screen shows the status of Array 0-RAID 0.



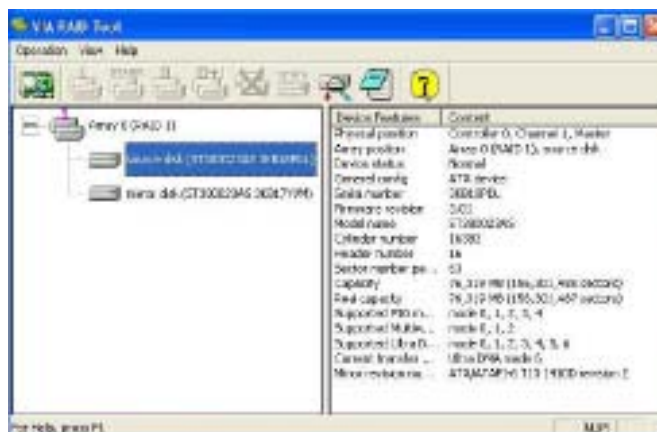
Click on the plus (+) symbol next to Array 0--RAID 0 to see the details of each disk.



You may also use the same  or  button to view the statuses of Array 0--RAID 1.



Click on the plus (+) symbol next to Array 0; RAID 1 to see the details of each disk.



## Caractéristiques

### Processeur

K8T890-A utilise un socket 939broches présentant les caractéristiques suivantes:

- Prend en charge les processeurs AMD K8 avec la Technologie Hyper Transport
- Vitesse de transfert de 2000/1600/1200/800/400 MT/s

La Technologie HyperTransport est une liaison point à point entre deux matériels, elle permet à des circuits intégrés d'échanger des informations à des vitesses bien plus élevées que ne le permettent les technologies à interconnexions actuellement disponibles.

### Chipset

Le chipset VIA K8T890 Northbridge (NB) Chipset et VIA VT8237 Southbridge (SB) se base sur une architecture innovante et évolutive avec des performances et une fiabilité éprouvées.

- |                        |   |
|------------------------|---|
| <b>K8T890<br/>(NB)</b> | <ul style="list-style-type: none"> <li>• Vitesses d'horloge de 1000/800/600/400/200 MHz avec opération de style «Double Débit de Données» pour 2000/1600/1200/800/400 MT/s dans les deux directions simultanément</li> <li>• Prend en charge les modes de transfert 66 MHz, 8x/4x, interface d'hôte Ultra V-Link avec bande passante totale de 1Go/s</li> <li>• Prend en charge l'interface asynchrone entre HyperTransport et PCI Express</li> <li>• Conforme à la bande passante élevée avancée PCI Express 1.0a</li> </ul> |
| <b>VT8237<br/>(SB)</b> | <ul style="list-style-type: none"> <li>• Supporte une interface Hôte V-Link 66 MHz 16 bits avec une bande passante totale de 1066 Mo/sec.</li> <li>• Conforme aux spécifications PCI 2.2 en 33 MHz, supportant jusqu'à 6 maîtres PCI</li> <li>• Contrôleur EIDE de Mode Maître UltraDMA 133/100/66 à Canaldouble intégré</li> <li>• Contrôleur USB 2.0, supportant 8 ports USB 2.0</li> <li>• Contrôleur clavier intégré avec support de souris PS2</li> </ul>  |

### Mémoire

- Prend en charge les types de mémoire DDR400/333/266 avec architecture à double canal
- Reçoit deux sockets DIMM SDRAM DDR de 184 broches 2,5V sans mémoire tampon
- Capacité maximum totale de 2 Go

### CODEC audio

- Conforme aux exigences audio de Microsoft WHQL/WLP 2.0
- Conforme aux spécifications AC'97 v2.3
- Entrée CD différentielle de haute qualité
- Prend en charge la vitesse d'échantillonnage double (96KHz) de la lecture audio DVD
- Compatible Direct Sound 3D™



## LAN sur carte (optionnel)

Le LAN sur carte possède les caractéristiques suivantes :

- Double Vitesse – 100/10 Mbps
- Interface MII vers Contrôleur Ethernet
- Négociation automatique : 10/100, Full/Half Duplex
- Conforme à tous les Standards IEEE802.3, 10Base-T et 100Base-TX Applicables

## Options d'extension

La carte mère comporte les options d'extension suivantes :

- Un PCI Express x16
- Deux PCI Express x1
- Deux emplacements PCI 32-bits
- Un logement AGP Express
- Deux en-têtes demi-hauteur supportant quatre canaux IDE
- Une interface lecteur de disquettes
- Deux connecteurs SATA à 7 broches
- Un logement Communications Network Riser (CNR)

La carte mère prend en charge la maîtrise de bus Ultra DMA avec des débits de 133/100/66Mo/s.

## E/S intégrées

La carte mère comporte un ensemble complet de connecteurs et de ports E/S :

- Deux ports PS/2 pour souris et clavier
- Un port série
- Un port parallèle
- Huit ports USB (panneau arrière x 4, embase x 4)
- Un port LAN (optionnel)
- Prise audio pour micro, entrée de ligne et sortie de ligne

## Microprogramme BIOS

La carte mère utilise AMI BIOS qui permet à l'utilisateur de configurer bon nombre de fonctions du système, dont :

- Gestion d'alimentation
- Alertes de réveil
- Paramètres de CPU
- Synchronisation de CPU et de mémoire

Le micro-programme peut également être utilisé pour définir les paramètres pour différentes vitesses d'horloge de processeur.



*Certaines spécifications matérielles et certains éléments logiciels sont susceptibles de modification sans préavis.*

## Feature

### Prozessor

K8T890-A verwendet einen 939-Pin Sockel mit den folgenden Eigenschaften:

- Unterstützt AMD K8-Prozessoren mit HyperTransport-Technologie
- Transferraten von 2000/1600/1200/800/400 MT/s

HyperTransport Technologie ist ein Punkt-zu-Punkt Link zwischen zwei Geräten. Es ermöglicht integrierten Schaltkreisen einen Informationsaustausch mit wesentlich höherer Geschwindigkeit als bei gängigen Interconnect-Technologien.

### Chipsatz

Der VIA K8T890 Northbridge (NB)- sowie VIA VT8237 Southbridge (SB)-Chipsatz basiert sich auf eine innovative und skalierbare Architektur mit bewiesener Zuverlässigkeit und Leistung.

#### **K8T890 (NB)**

- 1000 /800/600/400/200 MHz Taktraten mit Betrieb im doppelten Datendurchsatz bei 2000/1600/1200/800/400 MT/s in beide Richtungen gleichzeitig
- Unterstützt 66 MHz, 8x/4x Transfermodi, Ultra V-Link Host-Interface mit einer totalen Bandbreite von 1 GB/s
- Unterstützt asynchrones Interface zwischen HyperTransport und PCI Express
- Entspricht der fortschrittlichen hohen Bandbreite PCI Express 1.0a

#### **VT8237 (SB)**

- Unterstützt 16-Bit 66 MHz V-Link Host-Interface mit einer totalen Bandbreite von 1066 MB/Sek.
- Entspricht den Richtlinien der PCI 2.2- spezifikation von 33 MHz, mit einer Unterstützung von bis zu 6 PCI Master
- Eingebauter Doppel-Kanal UltraDMA 133/100/66 Master Modus EIDE-Controller
- USB 2.0 Controller, mit einer Unterstützung für 8 USB 2.0 Steckvorrichtungen
- Eingebauter Tastatur-Controller mit einer PS2-Maus-Unterstützung

### Arbeitsspeicher

- Unterstützt DDR400/333/266 Speichertypen mit Dualkanal-Architektur
- Nimmt zwei ungepufferte 2.5V 184-Pin DDR SDRAM DIMM-Sockel
- Unterstützt eine Gesamtkapazität von bis zu 2 GB

### Audio CODEC

- Entspricht den Anforderungen von Microsoft WHQL/WLP 2.0
- Entspricht AC'97 v2.3 Spezifikation
- Qualitativ hochwertiger Differential-CD-Eingang
- Unterstützt bei der DVD-Audiowiedergabe die doppelte Samplingrate (96KHz)
- Kompatibel mit Direct Sound 3D™

**Multi-Language Translation**

## Onboard LAN (optional)

Das Onboard-LAN hat die folgenden Leistungsmerkmale:

- Duale Geschwindigkeit – 100/10 Mbps.
- MII Interface-zu-Ethernet Controller
- Auto-Negotiation: 10/100 , Voll/Halfduplex
- Entspricht allen anwendbaren Standards: IEEE802.3, 10Base-T und 100Base-TX

## Erweiterungsmöglichkeiten

Das Motherboard ist mit den folgenden Erweiterungsmöglichkeiten ausgestattet:

- Ein PCI-Express x16
- Zwei PCI Express x1
- Zwei 32-bit PCI -Steckplätze
- Ein AGP-Express-Schlitz
- Zwei IDE-Stecker, die vier IDE-Kanäle unterstützen
- Ein Diskettenlaufwerkanschluss
- Zwei 7-Pin SATA Anschlüsse
- Ein Communications Networking Riser (CNR)-Steckplatz

Das Motherboard unterstützt Ultra DMA-Busmaster mit Transferraten von 133/100/66 MB/s.

## Integrierte I/O

Das Motherboard hat einen vollständigen Satz von E/A-Schnittstellen bzw. -Anschlüssen:

- Zwei PS/2-Anschlüsse für Maus und Tastatur
- Eine serielle Schnittstelle
- Eine parallele Schnittstelle
- Acht USB-Anschlüsse (Rückseite x 4, Header x 4)
- Ein LAN-Anschluss (optional)
- Audiobuchse für Mikrofon, Line-In und Line-Out

## BIOS-Firmware

Das Motherboard verwendet AMI BIOS, das es Benutzern gestattet, viele Systemfunktionen inkl. der Folgenden zu konfigurieren:

- Energieverwaltung
- Aufweckfunktionen
- CPU-Parameter
- CPU- und Arbeitsspeicherfrequenz

Die Firmware kann auch zur Einstellung von Parametern für verschiedene Prozessortaktgeschwindigkeiten verwendet werden.



*Manche Hardwarespezifikationen und Softwareelemente können ohne Ankündigung geändert werden.*

## Caratteristiche

### Processore

K8T890-A utilizza un Socket a 939 pin che supporta le seguenti caratteristiche:

- Supporto processore AMD K8 con tecnologia di HyperTransport
- Velocità di trasferimento di 2000/1600/1200/800/400 MT/s

La tecnologia HyperTransport rappresenta un collegamento Point-to-point tra due periferiche tramite l'utilizzo di circuiti integrati ad una velocità di molto superiore a quelle delle tecnologie attuali.

### Chipset

I Chipset VIA K8T890 Northbridge (NB) e VIA VT8237 Southbridge (SB) si basano su di una architettura innovativa e scalabile con affidabilità e prestazioni provate.

#### **K8T890**

##### **(NB)**

- Velocità di clock di 1000/800/600/400/200 MHz con funzionamento di tipo DDR (Double Data Rate) a 2000/1600/1200/800/400 MT/s in entrambe le direzioni simultaneamente
- Supporto di interfaccia per Host Ultra V-Link a 66 MHz, modalità di trasferimento 8x/4x, con larghezza di banda totale di 1 GB/s
- Supporto di interfaccia asincrona tra HyperTransport e PCI Express
- Conforme a PCI Express 1.0a a elevata larghezza di banda avanzata

#### **VT8237**

##### **(SB)**

- Supporto Dell'interfaccia Client V-Link a 16bit 66 MHz con larghezza di banda totale pari a 1066 MB/sec.
- Conforme alle specifiche PCI 2.2 a 33 MHz, in grado di supportare fino a 6 master PCI.
- Controller Master integrato UltraDMA a due canali 133/100/66 Master Mode EIDE Controller
- Controller USB 2.0, in grado di supportare sino a 8 porte USB 2.0.
- Controller integrato per la Tastiera e supporto mouse PS2

### Memoria

- Supporto di memorie DDR 400/333/266 con architettura Dual-channel
- Compatibile con due prese DIMM per DDR SDRAM da 2,5 V a 184 pin prive di buffer
- Una capacità massima totale di 2 GB

### Audio CODEC

- Compatibile con i requisiti per audio WHQL/WLP 2. di Microsoft
- Conforme alla specifica AC'97 v2.3
- Ingresso CD differenziale di qualità superiore
- Supporto di velocità di campionamento doppia (96 KHz) per la riproduzione audio di DVD
- Compatibile con Direct Sound 3D™

## LAN su scheda (opzionale)

La LAN su scheda fornisce le seguenti caratteristiche:

- Doppia velocità – 100/10 Mbps
- Interfaccia MII su Ethernet Controller
- Negoziazione Automatica: 10/100, Full/Half Duplex
- Supporto di tutti gli standard esistenti IEEE802.3, 10Base-T e 100Base-Tx

## Opzioni d'espansione

La scheda madre è dotata delle seguenti opzioni d'espansione:

- Un slot PCI Express x16
- Due slot PCI Express x1
- Due alloggiamenti PCI 32 bit
- Uno slot AGP Express
- Due collettori IDE che supportano quattro dispositivi IDE
- Una interfaccia unità dischetti floppy
- Due connettori SATA a 7 pin.
- Una slot Communications e Network Riser (CNR)

Questa scheda madre supporta masterizzazione bus Ultra DMA con velocità di trasferimento di 133/100/66 MB/s.

## I/O integrato

La scheda madre ha una serie completa di porte e connettori I/O:

- Due porte PS/2 per mouse e tastiera
- Una porta seriale
- Una porta parallela
- Otto porte USB (posteriorex4, intestazione x4)
- Una porta LAN (opzionale)
- Connettori audio per microfono, ingresso linea ed uscita linea

## Firmware BIOS

La scheda madre impiega il software AMI BIOS che abilita gli utenti a configurare molte caratteristiche de sistema, tra cui sono incluse le seguenti:

- Risparmio energetico
- Allarmi di riattivazione
- Parametri CPU
- Temporizzazione di CPU e memoria

Il Firmware può anche essere utilizzato per impostare i parametri di diverse velocità di temporizzazione del processore.



*Alcune specifiche hardware ed elementi software sono soggetti a modifica senza preavviso.*

# Características

## Procesador

K8T890-A utiliza un receptáculo de 939 pins que tiene las características siguientes:

- Soporta procesadores AMD K8 con HyperTransport Technology
- Índice de transferencia de 2000/1600/1200/800/400 MT/s

La Tecnología HyperTransport es un vínculo punto a punto entre dos dispositivos, habilita circuitos integrados para intercambiar la información en velocidades más rápidas que las tecnologías de interconexión disponibles actualmente.

## Chipset

El chipset VIA K8T890 Northbridge (NB) y VIA VT8237 Southbridge (SB) se basan de una arquitectura innovadora y escalable con fiabilidad y rendimiento comprobados.

### **K8T890 (NB)**

- Índices de reloj 1000/800/600/400/200 MHz con operación a estilo de Índice de Datos Dobles para 2000/1600/1200/800/400 MT/s en ambas direcciones simultáneamente
- Soporta los modos de transferencia 8x/4x de 66 MHz, interfaz de Anfitrión Ultra V-Link con anchura de banda total de 1 GB/s
- Soporta interfaz asincrónica entre HyperTransport y PCI Express
- Conformidad con anchura de banda alta PCI Express 1.0a avanzada

### **VT8237 (SB)**

- Soporta la interfaz 16-bit 66 MHz V-Link Host con anchura de banda total de 1066 MB/seg.
- Conforme con la especificación PCI 2.2 en 33 MHz, que soporta hasta 6 másters de PCI
- Controlador EIDE del Modo Máster UltraDMA 133/100/66 de Canal Dual integrado
- Controlador USB 2.0, con soporte para 8 puertos USB 2.0
- Controlador de teclado integrado con soporte de ratón PS2

## Memoria

- Soporta tipos de memoria DDR400/333/266 con arquitectura Canal Dual
- Acomoda dos zócalos DIMM SDRAM DDR de 184-pin de 2.5V sin buffer
- Una capacidad máxima total de 2 GB

## CODEC de audio

- Satisface los requisitos de audio de Microsoft WHQL/WLP 2.0
- Conformidad con la especificación AC'97 v2.3
- Entrada CD diferencial de alta calidad
- Soporta índice de muestreo doble (96KHz) de la reproducción de audio DVD
- Compatible con Direct Sound 3D™

## LAN Abordo (optativo)

La LAN en placa proporciona las características siguientes:

- Velocidad Dual – 100/10 Mbps
- Interfaz MII para el Controlador de Ethernet
- Autonegociación: 10/100, Duplex Completo/Medio
- Satisface Todas las Normas Aplicables IEEE802.3, 10Base-T y 100Base-TX

## Opciones de expansión

La placa principal viene con las sigtes. opciones de expansión:

- Un PCI Express x16
- Dos PCI Express x1
- Dos ranuras PCI de 32-bit
- Una ranura AGP Express
- Dos conectores IDE que soporta hasta cuatro dispositivos IDE
- Una interfaz de la unidad de disco floppy
- Dos conectores SATA de 7-pin
- Una ranura de Communications Network Riser (CNR)

Esta placa base admite ultra DMA bus mastering con velocidades de transferencia de 133/100/66 MB/s.

## I/O integrado

La placa base tiene un conjunto completo de puertos I/O y conectores:

- Dos puertos PS/2 para ratón y de teclado
- Un puerto serie
- Un puerto paralelo
- Ocho puertos USB (panel trasero x 4, cabecera x 4)
- Un puerto LAN (optativo)
- Clavijas de audio para micrófono, entrada de línea y salida de línea

## BIOS Firmware

La placa principal usa Award BIOS que habilita usuarios para configurar muchas características de sistema que incluyen las sigtes:

- Administración de Alimentación
- Alarmas para despertar
- Parámetros de CPU
- Cronometraje de CPU y de memoria

También se lo puede usar el firmware para configurar los parámetros para diferentes velocidades de reloj de procesador.



*Algunas especificaciones de hardware y elementos de software están sujetos a cambios sin previo aviso.*

## Características

### Processador

K8T890-A usa uma ficha de 939 pin que possui as seguintes características:

- Suporta processador AMD K8 com tecnologia de HyperTransport
- Taxa de transferência de 2000/1600/1200/800/400 MT/s

Tecnologia de HyperTransport Té um link ponto-a-ponto entre dois dispositivos, permite circuitos integrados para trocar informação a velocidades muito mais elevadas que as disponíveis actualmente em tecnologias de interconexão.

### Conjunto de Chips

O conjunto de chips VIA K8T890 Northbridge (NB) e VIA VT8237 Southbridge (SB) é baseado numa arquitectura inovadora e escalável com fiabilidade e performance provadas.

#### **K8T890**

##### **(NB)**

- 1000/800/600/400/200 MHz taxas de temporização com Taxa de Dados Dupla-operação de estilo para 2000/1600/1200/800/400 MT/s em ambas as direcções simultaneamente
- Suporta modos de transferência 8x/4x, 66 MHz, interface Host V-Link Ultra com um total de largura de banda de 1 GB/seg.
- Suporta interface assíncrono entre Hiper-Transporte e PCI Express
- Compatível com PCI Express 1.0 a de largura de banda elevada e avançada

#### **VT8237**

##### **(SB)**

- Suporta interface Host V-Link de 16bit 66 MHz com largura de banda de pico de 1066 MB/s
- Compatível com especificação PCI 2.2 a 33 MHz, suportando mais de 6 PCI mestres
- Canal Duplo Integrado UltraDMA 133/100/66 Modo Mestre EIDE Controlador
- Controlador USB 2.0, suportando portes para 8 USB 2.0
- Controlador de teclado integrado com suporte para mouse PS2

### Memória

- Suporta tipos de memória DDR400/333/266 com arquitectura bicanal
- Acomoda duas fichas DDR SDRAM DIMM de 184 pinos de 2.5V sem buffers
- Capacidade total máxima de 2 GB

### Codec áudio

- Cumpre com os requisitos áudio WHQL/WLP 2.0 da Microsoft
- Cumpre com especificação AC'97 v2.3
- Entrada para CD com diferencial de alta qualidade
- Suporta taxa de amostragem dupla (96KHz) de reprodução áudio de DVD
- Compatível com Direct Sound 3D™



## Onboard LAN (opcional)

O onboard LAN fornece as seguintes características:

- Velocidade Dupla – 100/10 Mbps
- Suporta interface MII para controlador Ethernet
- Auto Negociação: 10/100, Full/Half Duplex
- Satisfaz todos os Padrões IEEE802.3, 10Base-T e 100Base-TX Aplicáveis

## Opções de Expansão

A motherboard é fornecida com as seguintes opções de expansão:

- Um PCI Express x16
- Dois PCI Express x1
- Dois ranhuras PCI de 32 bit
- Uma abertura AGP Express
- Dois conectores IDE que suportam até quatro dispositivos IDE
- Um interface com drive de disco flexível
- Dois conectores SATA de 7 pin
- Uma ranhura de Aumento da Rede de Comunicações (CNR)

Esta motherboard suporta mastering bus Ultra DMA com taxas de transferência de 133/100/66MB/s.

## I/O Integrado

A motherboard possui um conjunto completo de portas I/O e conectores:

- Duas portas PS/2 para o rato e o teclado
- Uma porta de série
- Uma porta paralela
- Oito portas USB (Painel traseiro x4, header x4)
- Uma porta LAN (opcional)
- Fichas áudio para microfone, entrada de linha e saída de linha

## Microprogramação BIOS

Esta motherboard usa AMI BIOS que permitem aos utilizadores configurar muitas características do sistema incluindo as seguintes:

- Gestão de corrente
- Alarmes de despertar
- Parâmetros CPU
- Temporização de memória e CPU

A microprogramação poderá ser também usada para estabelecer parâmetros para diferentes velocidades de relógio do processador.



*Algumas especificações de hardware e itens de software poderão ser sujeitos a alteraçõessem aviso prévio.*

## 機能

### プロセッサ

K8T890-A には、次の特徴を持つ939ピンソケットが搭載されています：

- HyperTransport技術を導入したAMD K8プロセッサに対応します。
- 転送率が2000/1600/1200/800/400 MT/秒

HyperTransport技術とは、二つのデバイスを1対1 ( point-to-point) で接続する技術であり、従来のインターコネクト技術に比較して、集積回路同士の情報交換を高速化します。

### チップセット

VIA K8T890 Northbridge (NB)とVIA VT8237 Southbridge (SB)チップセットは、実証された信頼性と性能を持つ革新的で拡張性のあるアーキテクチャに基づいています。

- |                        |   |
|------------------------|---|
| <b>K8T890<br/>(NB)</b> | <ul style="list-style-type: none"> <li>• 1000/800/600/400/200 MHz のクロック率でのダブルテータレート動作が可能で、双方向の 2000/1600/1200/800/400 MT/秒の転送率を実現</li> <li>• 66 MHz 8x/4x 転送モード可能のUltra V-Link Hostインターフェースを 1 GB/秒の帯域幅でサポート</li> <li>• HyperTransport とPCI Expressとの間の非同期インターフェースをサポート</li> <li>• 先進型高帯域幅のPCI Express 1.0aに準拠</li> </ul>       |
| <b>VT8237<br/>(SB)</b> | <ul style="list-style-type: none"> <li>• 16ビットの 66 MHz V-Link クライアントインターフェースをサポートし、トータル帯域幅 1066 MB/秒まで可能。</li> <li>• 33MHzでのPCI2.2規格に準拠することで、最大6つまでのPCIマスター設備の取り付けを可能。</li> <li>• テュアルチャネルUltraDMA133/100/66マスターモードEIDEコントローラを内蔵。</li> <li>• USB2.0仕様コントローラ (8つのUSB2.0ポートに対応可能)。</li> <li>• PS2マウス対応のキーボードコントローラを内蔵。</li> </ul> |

## メモリ

- テュアルチャネル構成のDDR400/333/266メモリタイプに対応
- 2つの非バッファード2.5V 184ピンDDR SDRAM DIMM ソケットを搭載
- 合計で最大2GBまでの容量に対応可能

## Audio CODEC

- Microsoft WHQL/WLP 2.0 オーディオ基準に準拠
- AC'97 v2.3仕様に準拠
- 高品質の差動式CD入力をサポート
- DVDオーディオ信号再生のダブルサンプリングレート(96KHz) をサポート
- Direct Sound 3D™ に対応

## オンボードLAN (オプション)

オンボードLANは、次の機能を提供します。

- 2速対応 -- 100/10 Mbps
- イーサネットコントローラのMII インターフェース対応
- 自動折衝: 10/100, 全/半二重
- 適用可能なIEEE 802.3、10Base-T、および100Base-Tx 基準にすべて対応済み

## 拡張オプション

本マザーボードでは、次の拡張機能が利用できます。

- PCI Express x16 インターフェースが1つ
- PCI Express x1が2つ
- 32ビットPCIスロット が2つ
- AGP Expressスロットが1つ
- IDEコネクタ が2つ (計4つのIDEチャンネルをサポート)
- フロッピーディスク ドライブ インターフェイス が1つ
- 7ピンSATAコネクタ が2つ
- CNR (Communication Networking Riser) スロット が1つ

このマザーボードは、133/100/66 MB/秒の転送速度でのUltra DMA/バスマスタリングをサポートします。

## 統合I/O

マザーボードには、次のI/Oポートやコネクタを揃えています。

- マウスとキーボード用のPS/2ポート が2つ
- シリアルポート が1つ
- パラレルポート が1つ
- USBポート が8つ (背面パネルに4つ、ヘッダーが4つ)
- LANポート が1つ (オプション)
- マイク、ラインイン、ラインアウト用オーディオジャック

## BIOSファームウェア

本マザーボードはAMI BIOSを採用し、次の機能を含めた多様なシステム構成を行えます。

- 電源管理
- ウェークアップアラーム
- CPUパラメータ
- CPUおよびメモリのタイミング

さらに、所定のパラメータを設定することによって、プロセッサのクロック速度を変更することもできます。



一部のハードウェア仕様とソフトウェアアイテムは、予告なしに変更することがあります。

## 특징

### 프로세서

K8T890-A 는 다음과 같은 특징을 지닌 939 핀 소켓을 사용한다:

- HyperTransport 기술의 AMD K8 프로세서 지원
- 전송 속도 2000/1600/1200/800/400 MT/s

HyperTransport 기술은 두 장치 사이의 point-to-point 링크로, 집적 회로가 기존의 인터커넥트 기술보다 훨씬 빠른 속도로 정보를 교환할 수 있게 한다.

### 칩셋

VIA K8T890 칩셋 패밀리의 노스브리지(NB)와 VIA VT8237 사우스브리지(SB) 칩셋은 증명된 신뢰도와 성능을 지닌 혁신적이고 확장가능한 아키텍처에 기반합니다.

#### **K8T890 (NB)**

- 동시 양방향 2000/1600/1200/800/400 MT/s을 위한 Double Data Rate-style 작동의 1000/800/600/400/200 MHz 클럭 속도
- 66 MHz, 8x/4x 전송 모드 및 총 대역폭 1GB/s의 Ultra V-Link 호스트 인터페이스 지원
- HyperTransport 와 PCI Express 간에 비동기 인터페이스 지원
- 고급의 고 대역폭 PCI Express 1.0a 부합

#### **VT8237 (SB)**

- 총 대역폭 1066 MB/sec의 16 비트 66 MHz V-Link 클라이언트 인터페이스 지원
- 33 MHz에서 PCI 2.2 사양 호환, 최대 6 PCI 마스터 지원
- 통합 듀얼 채널 UltraDMA 133/100/66 마스터 모드 EIDE 컨트롤러
- USB 2.0 컨트롤러, 8 USB 2.0 포트 지원
- PS2 마우스 지원 통합 키보드 컨트롤러

### 메모리

- 듀얼 채널 아키텍처와 함께 DDR400/333/266 메모리 타입 지원
- 2 개의 unbuffered 2.5V 184 핀 DDR SDRAM DIMM 소켓 사용
- 최대 용량 2 GB

### 오디오 코덱

- Microsoft WHQL/WLP 2.0 오디오 요구 조건에 부합
- AC'97 v2.3 사양 부합
- 고품질 차동 CD 입력
- DVD 오디오 재생에 더블 샘플링 속도 (96KHz) 지원
- Direct Sound 3D™ 호환

## 온보드 LAN(선택 품목)

온보드 LAN에는 다음과 같은 특징이 있습니다.

- 듀얼 스피드 -- 100/10 Mbps
- 이더넷 컨트롤러를 위한 MII 인터페이스
- 자동 선택: 10/100, Full/Half 듀플렉스
- IEEE 802.3, 10Base-T 및 100Base-Tx 표준 모두 부합

## 확장 옵션

마더보드에는 다음과 같은 확장 옵션이 있습니다.

- PCI 익스프레스 x16 1 개
- PCI 익스프레스 x1 2 개
- 32비트 PCI 슬롯 2개
- AGP 익스프레스 슬롯 1 개
- 최대 4개의 IDE 장치를 지원하는 IDE 커넥터 2 개
- 플로피 디스크 드라이브 인터페이스 1개
- 7 핀 SATA 커넥터 2 개
- Communications Network Riser (CNR) 슬롯 1 개

본 마더보드는 전송 속도 133/100/66MB/s 로 Ultra DMA 버스 마스터링을 지원한다.

## 통합 I/O

마더보드에는 충분한 수의 I/O 포트 및 커넥터가 있습니다.

- 마우스 및 키보드용 PS/2 포트 2개
- 시리얼 포트 1개
- 병렬 포트 1개
- USB 포트 8개(뒷 패널 x 4, 헤더 x 4)
- LAN 포트 1개(선택 품목)
- 마이크, 라인 인 및 라인 아웃용 오디오 단자

## BIOS 펌웨어

본 마더보드는 다음과 같은 시스템 특성을 구성할 수 있는 AMI BIOS 를 사용한다:

- 전원 관리
- Wake-up 알람
- CPU 파라미터
- CPU 및 메모리 타이밍

펌웨어로 다른 프로세서 클럭 속도의 파라미터를 설정할 수도 있다.



일부 하드웨어 사양 및 소프트웨어 항목은 사전 통보 없이 변경될 수 있습니다.

## 功能

### 處理器

K8T890-A設置有一個939針插座，該插座具有如下功能：

- 支援採用HyperTransport 技術之AMD K8處理器
- 傳輸速度2000/1600/1200/800/400 MT/秒

HyperTransport技術為以點對點方式連接兩台設備的技術，藉此，積體電路間能夠以後高於現有各種內部連接技術(interconnect technology)技術的速度來交換資訊。

### 晶片組

VIA K8T890 北橋(NB)及VIA VT8237南橋(SB)晶片組在研發設計上採用了創新且具擴充性之架構，具備優良的可靠性及性能。

#### **K8T890 (NB)**

- 1000/800/600/400/200 MHz 時脈速度加上雙倍資料速率型作業，實現同步雙向的2000/1600/1200/800/400 MT/秒之速率
- 以高達1 GB/秒的總頻寬來支援 66 MHz 8x/4x 傳輸模式的Ultra V-Link Host 介面
- 支援HyperTransport 及PCI Express間的非同步介面
- 相容於先進型高頻寬 PCI Express 1.0a

#### **VT8237 (SB)**

- 支援16bit 66 MHz V-Link主控介面，最高頻寬 1066 MB/秒
- 相容於 PCI 2.2規格(33 MHz)，支援6個PCI主控器
- 內建有雙通道Ultra 133/100/66主控模式EIDE控制器
- USB2.0控制器(支援8個USB2.0埠)
- 內建有支援PS2滑鼠之鍵盤控制器

### 記憶體

- 支援雙通道架構之DDR400/333/266 記憶體
- 配備有2個非緩衝2.5V 184針DDR SDRAM DIMM 插槽
- 最大容量 2 GB

### 音頻編碼器

- 符合Microsoft WHQL/WLP 2.0 音訊規格
- 相容於AC'97 v2.3規格
- 高品質差動CD輸入
- 支援DVD音訊播放時的雙採樣率 (96KHz)
- Direct Sound 3D™ 相容

## 機載區域網路 (選購)

機載區域網路提供下列功能：

- 雙速率 — 100/10 Mbps
- 乙太網路控制器之MII介面
- 自動協商：10/100 全/半雙工
- 符合所有適用之IEEE 802.3, 10Base-T 及100Base-Tx 規格

## 擴充選項

本主機板包括下列擴充選項：

- 1 個 PCI Express x16 插槽
- 2 個 PCI Express x1 插槽
- 2 個 32-bit PCI 插槽
- 1 個 AGP Express 槽
- 2 個 IDE 接頭，支援 4 個 IDE 裝置
- 1 個軟碟機介面
- 2 個 7 針 SATA 接頭
- 1 個通訊網路附加卡 (Communications Network Riser, CNR) 插槽

本主機板支援傳輸率 133/100/66 MB/秒下的 Ultra DMA 匯流排主控功能。

## 整合 I/O

主機板具有一組齊全的 I/O 連接埠及連接頭：

- 2 個 PS/2 埠，供滑鼠與鍵盤使用
- 1 個串列埠
- 1 個平行埠
- 8 個 USB 埠 (背面面板 x 4，接頭 x 4)
- 1 個區域網路埠 (選購)
- 麥克風音頻插座、線級輸入及線級輸出

## BIOS 韌體

本主機板使用 AMI BIOS，使用者可以組態設定許多系統功能，包括如下：

- 電源管理
- 喚醒警鈴
- CPU 參數
- CPU 及記憶體時脈定時

此外，也可藉由參數的設定，調整處理器的時脈速度。



部份硬體規格和軟體內容可能會在未經通知的情況下更動，敬請見諒。

## 功能

### 处理器

K8T890-A使用一个 939-pin 插座，此插座具有以下特点：

- 支持AMD K8 处理器以HyperTransport 技术
- 传输速率 2000/1600/1200/800/400 MT/s

HyperTransport 技术是一种在两台设备间进行点到点连接的技术，它可以让集成电路使用比当前互连技术更高的速度进行信息交换。

### 芯片组

VIA K8T890 北桥 (NB) 和 VIA VT8237 南桥 (SB) 芯片组是基于一种新型的、可扩展的架构，能提供已经证明的可靠性和高性能。

#### **K8T890 (NB)**

- 1000/800/600/400/200 MHz 时钟频率，双数据速率工作，双向并发传输速率可达 2000/1600/1200/800/400 MT/s
- 支持 66 MHz，8x/4x 传输模式、Ultra V-Link 主机接口，1 GB/s 总带宽
- 支持 HyperTransport 和 PCI Express 之间的同步接口
- 符合增强高带宽 PCI Express 1.0a 规格

#### **VT8237 (SB)**

- 支持总带宽为1066MB/sec的16位66MHz V-Link 主机接口
- 符合33 MHz下的PCI 2.2规格，最大支持6个PCI主控
- 集成双通道 UltraDMA 133/100/66 主控模式 EIDE 控制器
- USB 2.0 控制器，支持 8 个 USB 2.0 端口
- 集成支持 PS2 鼠标的键盘控制器

### 内存

- 支持双通道架构 DDR400/333/266 内存类型
- 支持 2 个非缓冲 2.5V 184-pin DDR SDRAM DIMM 插槽
- 总共最大可支持 2 GB

### 音频编解码器

- 符合 Microsoft WHQL/WLP 2.0 音频要求
- 兼容 AC '97 v2.3 规格
- 高质量差分 CD 输入
- 支持 DVD 音频播放的双采样速率 (96KHz)
- 符合 Direct Sound 3D™ 规格



## Onboard LAN (可选)

板上集成的 LAN 提供以下功能：

- 双速-100/10 Mbps
- 以太网控制器的 MII 接口
- 自动协商：10/100，全双工/半双工
- 符合所有相应的 IEEE 802.3、10Base-T 和 100Base-Tx 标准

## 扩展选项

此主板提供如下扩展选项：

- 1 个 PCI Express x16 插槽
- 2 个 PCI Express x1 插槽
- 2 个 32 位 PCI 扩展插槽
- 1 个 AGP Express 插槽
- 2 个 IDE 接口，可支持 4 个 IDE 设备
- 1 个软驱接口
- 2 个 7-pin SATA 接口
- 1 个通信网络转接 (CNR) 插槽

主板支持 Ultra DMA 总线控制，传输速率可达 133/100/66 MB/sec。

## 集成 I/O

此主板具有完整的 I/O 端口和插孔：

- 2 个用于连接鼠标和键盘的 PS/2 端口
- 1 个串口
- 1 个并口
- 8 个 USB 端口 (后面板x4, 接头x4)
- 1 个 LAN 端口(可选)
- 麦克风、线入和线出声音插孔

## BIOS

此主板使用 AMI BIOS，可以让用户自己配置以下系统功能：

- 电源管理
- 唤醒报警
- CPU 参数
- CPU 和记忆定时

还可用于设置不同处理器时钟速度的参数。



某些硬件规格和软件项目若有更改恕不另行通知。

## Характеристики

### Процессор

K8T890-A обладает 939-штырьковым сокетом со следующими характеристиками:

- Поддерживает процессоры AMD K8 с технологией HyperTransport Technology
- Скорость передачи данных 2000/1600/1200/800/400 МТ/с

Технология HyperTransport обеспечивает связь двух устройств по протоколу point-to-point, позволяя гораздо более быстрый обмен информацией между интегральными микросхемами, чем тот, который обеспечивается существующими технологиями.

### Чипсет

Чипсеты VIA K8T890 «Северный мост» (Northbridge, NB) и VIA VT8237 «Южный мост» (Southbridge, SB) построены с использованием инновационной масштабируемой архитектуры, обеспечивающей высокую надежность и производительность.

- |                        |  |
|------------------------|--|
| <b>K8T890<br/>(NB)</b> | <ul style="list-style-type: none"><li>• 1000/800/600/400/200 МГц; в режиме Double Data Rate - 2000/1600/1200/800/400 МТ/с одновременно в двух направлениях</li><li>• Поддерживает режимы передачи 66 МГц, 8x/4x, интерфейс хоста Ultra V-Link с общей скоростью трансфера 1 ГБ/с</li><li>• Поддерживает асинхронный интерфейс между HyperTransport и PCI Express</li><li>• Совместима с технологией PCI Express 1.0a</li></ul>   |
| <b>VT8237<br/>(SB)</b> | <ul style="list-style-type: none"><li>• Поддерживает интерфейс хоста 16-бит 66 МГц V-Link с общей скоростью передачи 1066 МБ/с</li><li>• Совместима со спецификацией PCI 2.2 33 МГц, поддерживает до 6 PCI устройств типа master</li><li>• Интегрированная технология двухканального UltraDMA 133/100/66 в режиме master и контроллер EIDE</li><li>• Контроллер USB 2.0, поддержка до портов 8 USB 2.0</li><li>• Интегрированный контроллер клавиатуры с поддержкой мыши PS2</li></ul> |

### Память

- Поддерживает типы памяти DDR400/333/266 с двухканальной архитектурой
- Размещает два 184-пиновых сокета небуферируемой памяти 2.5V DDR SDRAM DI
- Общий объем памяти 2 GB

### Аудио CODEC

- Соответствует требованиям Microsoft WHQL/WLP 2.0 аудио
- Совместим со спецификацией AC'97 v2.3
- Высококачественный дифференциальный вход с CD
- Поддержка режима двойного сэмплирования (96KHz) при прослушивании аудио-DVD
- Совместимость с Direct Sound 3D™

## Встроенный сетевой адаптер LAN (опционально)

Встроенный сетевой адаптер LAN обладает следующими характеристиками:

- Две скорости-- 100/10 Mbps
- Интерфейс MII для Ethernet-контроллера
- Автопереговоры: 10/100, полный/половинный дуплекс
- Соответствует всем требованиям стандартов IEEE 802.3, 10Base-T и 100Base-Tx

## Возможности расширения

Существуют следующие опции расширения данной материнской платы:

- Один разъем PCI Express x16
- Два разъема PCI Express x1
- Два 32-битовых слота PCI
- Один слот AGP Express
- Два разъема IDE с поддержкой до четырех устройств IDE
- Один разъем для накопителя на гибких дисках
- Два разъема 7-pin SATA
- Один слот CNR

Плата поддерживает захват управления шиной Ultra DMA со скоростью передачи 133/100/66МБ/с.

## Интегрированный вход/выход

Плата снабжена полным набором портов входа/выхода и разъемов:

- Два порта PS/2 для подключения мыши и клавиатуры
- Один серийный порт
- Один параллельный порт
- Восемь портов USB (4 на задней панели, 4 в корпусе)
- Один порт LAN (опционально)
- Гнездо для подключения микрофона, гнезда аудио-входа и выхода

## BIOS

Плата работает под AMI BIOS, который позволяет пользователю конфигурировать различные характеристики системы:

- Управление питанием
- Сигналы пробуждения системы
- Параметры CPU
- Время доступа для CPU и памяти

BIOS допускает также установку параметров для различных частот процессора.



*Некоторые параметры платы и характеристики ее программного обеспечения могут быть изменены без предварительного уведомления.*

## Cechy

### Procesor

Na płycie głównej K8T890-A użyto 939-nóżkowe gniazdo procesora dzięki czemu posiada ona następujące właściwości:

- Obsługuje procesory K8 firmy AMD oparte na technologii HT
- Zapewnia szybkości transmisji 2000/1600/1200/800/400 MT/s

Technologia HiperTransportu jest protokołem komunikacji między dwoma urządzeniami, który umożliwia układom zcalonym wymieniać informację z dużo większymi szybkościami niż dotychczas stosowane technologie wzajemnych połączeń.

### Chipset

Mostek północny (NB) VIA K8T890 i mostek południowy (SB) VIA VT8237 chipsetu oparty jest na nowatorskiej i skalowalnej architekturze o sprawdzonej niezawodności i funkcjonalności.

#### **K8T890 (NB)**

- Dwukierunkowe jednoczesne operacje przesyłu danych z szybkościami 2000/1600/1200/800/400 MT/s przy zastosowaniu szybkości zegara 1000/800/600/400/200 MHz.
- Obsługuje szybkość transferu danych 66 MHz, 8x/4x, złącze hosta Ultra V-Link 1 GB/s
- Obsługuje asynchroniczne złącze pomiędzy HyperTransport i PCI Express
- Zgodna z technologią PCI Express 1.0a

#### **VT8237 (SB)**

- Obsługuje złącze 16 bitowy 66 MHz V-Link Host z całkowitą szybkością 1066 MB/s.
- Zgodny ze standardem PCI w wersji 2.2 o częstotliwości 33 MHz, obsługuje do 6 urządzeń PCI typu master.
- Zintegrowany dwukanałowy Master Mode EIDE kontroler UltraDMA 133/100/66.
- Kontroler USB 2.0, obsługujący do 8 gniazd USB 2.0
- Zintegrowany kontroler klawiatury z obsługą myszy PS2

### Pamięć

- Obsługuje dwukanałowe pamięci typu DDR400/333/266
- Zaopatrzona w dwa 184-nóżkowe złącza niebuforowanej pamięci 2.5V DDR SDRAM DIMM
- Maksymalnie obsługuje 2GB pamięci

### Audio CODEC

- Zgodna ze specyfikacją Microsoft WHQL/WLP 2.0 audio
- Zgodny z AC'97 w wersji 2.3
- Wysokiej jakości różniczkowe wejście CD
- Obsługuje podwójne próbkowanie (96KHz) DVD audio playback
- Zgodny z Direct Sound 3D™

## Zintegrowana obsługa sieci LAN (opcjonalnie)

Zintegrowana obsługa sieci LAN posiada następujące właściwości:

- Dwa zakresy prędkości -- 100/10 Mbps
- Interfejs MII w kontrolerze ethernetu
- Wybierana automatycznie podwójna szybkość przesyłu – 10/100 Mbps w trybach Full/Half Duplex
- Zgodność ze wszystkimi standardami IEEE 802.3, 10Base-T i 100Base-Tx

## Możliwości rozbudowy

Płyta główna wyposażona jest w następujące gniazda:

- Jedno gniazdo PCI Express x16
- Dwa gniazda PCI Express x1
- Dwa 32-bitowe gniazda PCI
- Jedno gniazdo AGP Express
- Dwa złącza IDE mogące obsłużyć do czterech urządzeń IDE
- Jedno złącze obsługujące stacje dyskiety
- Dwa 7-nóżkowe złącza SATA
- Jedno gniazdo CNR opcjonalnie

Płyta główna obsługuje magistralę Ultra DMA o szybkościach przesyłu 133/100/66MB/s.

## Zintegrowane We/Wy

Płyta główna wyposażona jest w pełny zestaw gniazd i złączy We/Wy:

- Dwa gniazda PS/2 dla myszy i klawiatury
- Jedno gniazdo szeregowo
- Jedno gniazdo równoległe
- Osiem portów USB (4 na panelu tylnym, 4 w obudowie)
- Jedno gniazdo LAN (opcjonalnie)
- Gniazdo wejściowe mikrofonowe, gniazdo wejściowe i wyjściowe dźwięku (audio)

## Firmowy BIOS

Płyta główna wyposażona jest w BIOS firmy AMI, który pozwala użytkownikowi konfigurować wiele cech systemu włączając w to następujące właściwości:

- Zarządzanie poborem mocy
- Alarmy typu Wake-up
- Parametry pracy procesora
- Ustalenia szybkości pracy procesora i pamięci

BIOS może być używany do ustalania parametrów wpływających na szybkości pracy zegara procesora.



*Niektóre parametry dotyczące płyty i jej oprogramowania mogą ulec zmianie bez uprzedniego powiadomienia.*

# Vlastnosti

## Procesor

K8T890-A využívá 939kolíkovou patici, která se vyznačuje následujícími vlastnostmi:

- Podporuje procesory AMD K8 s technologií HyperTransport
- Přenosové rychlosti 2000/1600/1200/800/400 MT/s

Technologie HyperTransport je přímým spojením mezi dvěma zařízeními, umožňující integrovaným obvodům výměnu informací vyššími rychlostmi, než jaké nabízejí současné technologie.

## Čipová sada

Čipy northbridge (NB) VIA K8T890 a southbridge (SB) VIA VT8237 jsou založeny na inovativní a škálovatelné architektuře s ověřenou spolehlivostí a výkonností.

### **K8T890 (NB)**

- Taktovací frekvence 1000/800/600/400/200 MHz s provozem s dvojnásobnou rychlostí přenosu znamená dosažení 2000 /1600/1200/800/400 MT/s v obou směrech současně
- Podpora hostitelského rozhraní 66 MHz, přenosové režimy 8x/4x, Ultra V-Link s celkovou šířkou pásma 1 GB/s
- Podpora asynchronního rozhraní mezi HyperTransport a PCI Express
- Splňuje požadavky s rozšířenou šířkou pásma PCI Express 1.0a

### **VT8237 (SB)**

- Podporuje 16bitové 66 MHz hostitelské rozhraní V-Link Host interface s celkovou šířkou pásma 1066 MB/s
- Splňuje specifikace standardu PCI 2.2 s frekvencí 33 MHz, podporující až 6 hlavních kanálů PCI
- Integrovaný dvoukanalový řadič UltraDMA 133/100/66 Master Mode EIDE
- Řadič USB 2.0, podporující 8 portů USB 2.0
- Integrovaný řadič klávesnice s podporou myši PS2

## Paměť

- Podpora typů paměti DDR400/333/266 s dvoukanalovou architekturou
- K dispozici jsou dvě patice 2,5 V, 184 kolíků DDR SDRAM DIMM bez vyrovnávací paměti
- Celková maximální kapacita paměti 2 GB

## Zvukový kodek

- Splňuje požadavky na audio zařízení Microsoft WHQL/WLP 2.0
- Splňuje požadavky standardu AC'97 v2.3
- Vysoce kvalitní diferencní vstup CD
- Podpora dvojnásobné vzorkovací frekvence (96 kHz) pro přehrávání DVD audio
- Kompatibilita s Direct Sound 3D™

## Vestavění síťové rozhraní LAN (volitelně)

Vestavěné síťové rozhraní LAN nabízí následující možnosti:

- Dvounásobná přenosová rychlost -- 100/10 Mbps
- Rozhraní MII s řadičem Ethernet
- Automatické vyjednávání: 10/100, poloviční/plný duplex
- Splňuje všechny příslušné standardy IEEE 802.3, 10BASE-T a 100BASE-Tx

## Možnosti rozšíření

Základní deska je dodávána s následujícími možnostmi rozšíření

- Jedna patice PCI Express x16
- Dvě patice PCI Express x1
- Dvě 32bitové patice PCI
- Jedna patice AGP Express
- Dva konektory IDE podporující až čtyři zařízení IDE
- Jedno rozhraní pro disketovou mechaniku
- Dva 7kolíkové konektory SATA
- Jedna patice CNR

Tato základní deska podporuje řízení sběrnice Ultra DMA s přenosovými rychlostmi 133/100/66 MB/s.

## Integrovaný vstup/výstup

Základní deska je vybavena kompletní sadou vstupních portů a konektorů I/O:

- Dva porty PS/2 pro myš a klávesnici
- Jeden sériový port
- Jeden paralelní port
- Osm USB portů (4x zadní panel, 4x přední panel)
- Jeden port LAN (volitelně)
- Zvukové konektory pro mikrofon, zvukový vstup a výstup

## Firmware BIOS

Základní deska využívá BIOS formy AMI, který uživateli umožňuje nakonfigurovat mnoho systémových parametrů, včetně následujících:

- Řízení spotřeby
- Alarmy při spuštění systému
- Parametry CPU
- Časování CPU a paměti

Firmware může být rovněž použit k nastavení parametrů pro různé taktovací frekvence procesoru.



*Některé technické parametry hardware a software se mohou měnit bez předchozího upozornění.*

# Caracteristici

## Procesorul

K8T890-A utilizează un soclu cu 939 ace, având următoarele proprietăți:

- Suportă procesoare AMD K8 care utilizează tehnologia HyperTransport
- Viteză de transfer de 2000/1600/1200/800/400 MT/s

Tehnologia HyperTransport este o legătură punct-la-punct între două aparate, care permite viteze mult mai mari de schimb al informațiilor între circuitele integrate, decât cel asigurat de tehnologiile de interconectare actuale.

## Setul de chipuri

Seturile de chipuri VIA K8T890 Northbridge (NB) și VIA VT8237 Southbridge (SB) se bazează pe o arhitectură inovatoare și scalabilă, care s-a impus deja prin fiabilitate și performanță.

### **K8T890 (NB)**

- Clock rate de 1000/800/600/400/200 MHz cu funcționare Double Data Rate (viteză dublă de transfer date) pentru 2000/1600/1200/800/400 MT/s, simultan în ambele direcții
- Suportă modurile de transfer la 66 MHz, 8x/4x, interfață Ultra V-Link Host cu lățime totală de bandă de 1 GB/s
- Suportă interfață asincronă între HyperTransport și PCI Express
- Compatibilă cu PCI Express 1.0a evoluată cu lățime de bandă mare

### **VT8237 (SB)**

- Suportă interfață V-Link Host de 16 biți și 66 MHz, având o lățime de bandă totală de 1066 MB/s
- Compatibilă cu specificația PCI, versiunea 2.2, care suportă cel mult 6 module PCI master
- Controler EIDE integrat, cu canal dual UltraDMA 133/100/66 Master Mode
- Controler USB 2.0 care suportă 8 porturi USB 2.0
- Controler de tastatură cu suport pentru mouse PS/2

## Memoria

- Suportă tipuri de memorie DDR400/333/266 cu arhitectură cu canal dual
- Dispune de două socluri pentru module fără zonă tampon DDR SDRAM DIMM de 2,5 V, cu 184 ace
- Capacitatea maximă este de 2 GB

## Audio CODEC

- Compatibilă cu specificațiile audio Microsoft WHQL/WLP 2.0
- Compatibil cu specificația AC'97, versiunea 2.3
- Intrare CD diferențială de înaltă calitate
- Suportă frecvență de comutare dublă (96 kHz) pentru redarea audio de pe DVD
- Compatibil cu Direct Sound 3D™



## Onboard LAN (opțional)

Onboard LAN are următoarele caracteristici:

- Viteză duală -- 100/10 Mbps
- Interfață MII pentru controler ethernet
- Autonegociere: 10/100, semi-duplex și duplex complet
- Corespunde tuturor standardelor IEEE 802.3, 10Base-T and 100Base-Tx

## Opțiuni de extindere

Placa de bază este dotată următoarele posibilități de extindere:

- Un PCI Express de 16x
- Două PCI Express de 1x
- Două sloturi PCI de 32 biți
- Un slot AGP Express
- Două conecitoare IDE care suport cel mult 4 instrumente IDE
- O interfață pentru unitate floppy
- Două conecitoare SATA 7
- Un slot CNR

Această placă de bază suportă Ultra DMA bus mastering cu viteza de transfer de 133/100/66MB/s.

## I/O integrată

Placa de bază este dotată cu un set complet de porturi și conecitoare I/O:

- Două porturi PS/2, pentru mouse și tastatură
- Un port serial
- Un port paralel
- Opt porturi USB (4 în spate, 4 în față)
- Un port LAN (opțional)
- Mufe audio pentru microfon, intrare și ieșire audio

## Firmware BIOS

Placa de bază utilizează AMI BIOS, care permite utilizatorului să configureze mai mulți parametri ai sistemului, cum ar fi:

- Gestionarea energiei
- Alarmer de trezire
- Parametri CPU
- Temporizare CPU și memorie

Acest firmware poate fi utilizat și pentru a seta parametrii diferitelor frecvențe de comandă ale procesorului.



*Anumite specificații hardware și elemente de software pot fi modificate fără înștiințare prealabilă.*

# Спецификация

## Процесор

K8T890-A използва 939-pin сокет със следните спецификации:

- Поддръжка на процесори AMD K8 с технологията HyperTransport
- Скорост на трансфер 2000/1600/1200/800/400 MT/s

Технологията HyperTransport е връзка точка-до-точка (point-to-point) между две устройства, която предоставя възможност интегрираните вериги да обменят информация на много по-висока скорост от досегашно съществуващите технологии.

## Чипсет

Чипсетът със северен мост VIA K8T890 (NB) и южен мост VIA VT8237 (SB) е изграден на базата на оригинална архитектура с възможност за надстройка с доказана надеждност и производителност.

### **K8T890 (NB)**

- Основни честоти 1000/800/600/400/200 MHz с действие като при Double Data Rate за постигане на скорост 2000/1600/1200/800/400 MT/s в двете посоки едновременно
- поддръжка на скорости на трансфер 66 MHz, 8x/4x, Ultra V-Link Host интерфейс с обща честотна лента 1 GB/s
- поддръжка на асинхронен интерфейс между HyperTransport и PCI Express
- съвместимост със спецификацията PCI Express 1.0a

### **VT8237 (SB)**

- Поддръжка на 16-bit 66 MHz V-Link Host интерфейс с обща скорост 1066 MB/s
- Съвместимост със спецификацията PCI 2.2 при 33 MHz, с поддръжка на до 6 PCI master устройства
- Интегриран дву-канален EIDE контролер UltraDMA 133/100/66 Master Mode
- Контролер USB 2.0 с поддръжка на 8 порта USB 2.0
- Интегриран контролер за клавиатура с поддръжка на PS2 за мишка

## Памет

- двуканална архитектура на паметта с поддръжка на модули DDR400/333/266
- два небуферирани 184-pin слота DDR SDRAM DIMM с напрежение 2.5V
- общ максимален капацитет 2 GB

## Audio CODEC

- аудио - съвместимо с спецификацията Microsoft WHQL/WLP 2.0
- съвместимост със спецификацията AC'97 v2.3
- висококачествен диференциален CD вход
- едновременно възпроизвеждане на 2 звукови потока (96KHz) на DVD аудио
- съвместимост с Direct Sound 3D™

**Multi-Language Translation**

## Интегриран мрежов контролер (опция)

Спецификация на интегрирания мрежов контролер:

- две скорости -- 100/10 Mbps
- Интерфейс MII към ethernet контролера
- Автоматично разпознаване: 10/100, Full/Half Duplex
- Съвместимост с всички приложими стандарти IEEE 802.3, 10Base-T и 100Base-Tx

## Възможности за разширяване

Дънната платка има следните разширителни възможности:

- един слот PCI Express x16
- два слота PCI Express x1
- два слота 32-bit PCI
- един AGP Express слот
- два IDE конектора с поддръжка до четири IDE устройства
- един конектор за флопидисково устройство
- два 7-щифтови SATA конекторас
- един слот CNR

Дънната платка поддържа шина Ultra DMA 133/100/66MB/s.

## Интегриран Вход/Изход контролер

Дънната платка има пълен набор от I/O портове и конектори:

- два PS/2 порта за мишка и клавиатура
- един сериен порт
- един паралелен порт
- Осем USB порта (4 на задния панел и 4 колектора)
- един LAN порт (опция)
- Аудио жакове за микрофон, линеен вход и линеен изход

## BIOS Firmware

Дънната платка използва AMI BIOS с възможност за различни системни настройки, включително

- управление на захранването
- Wake-up аларми
- параметри на процесора
- синхронизиране на процесора и паметта

настройка на скоростта на часовника на процесора



*Хардуерните и софтуерни спецификации и параметри могат да бъдат изменени без предупреждение.*

## Jellemző

### Processzor

A K8T890-A 939 tús foglalattal rendelkezik, amelynek jellemzői:

- HyperTransport technológiával rendelkező AMD K8 processzorokkal működik
- Átviteli sebessége 2000/1600/1200/800/400 MT/s

A HyperTransport technológia egy ponttól pontig való kapcsolat két készülék között, és segítségével az integrált áramkörök közötti információcsere sebessége sokkal nagyobb, mint a jelenleg rendelkezésre álló összekapcsolási technológiák esetében.

### Lapkakészlet

A VIA K8T890 Northbridge (NB) és VIA VT8237 Southbridge (SB) lapkakészletek egy új és méretezhető, nagy megbízhatóságú és teljesítőképességű architektúrára épülnek.

#### **K8T890 (NB)**

- 1000/800/600/400/200 MHz ütemfrekvencia, Double Data Rate (dupla adatsebesség) üzemmóddal 2000/1600/1200 /800/400 MT/s esetén, mindkét irányban, egyidőben
- 66 MHz-es, 8-szoros/4-szeres átviteli üzemmódot támogat, 1 GB/s-os össz-sávszélességű Ultra V-Link Host interfésszel
- Aszinkron interfészt támogat a HyperTransport és PCI Express között
- Kompatibilis a fejlett nagy sávszélességű PCI Express 1.0a verziójával

#### **VT8237 (SB)**

- 16 bites, 66 MHz-es, 1066 MB/s össz-sávszélességű V-Link Host interfészt támogat
- A PCI 2.2 specifikációval kompatibilis 33 MHz-en, maximum 6 PCI mestert támogat
- Beépített duál csatornás UltraDMA 133/100/66 Master módú EIDE vezérlő
- USB 2.0 vezérlő, 8 USB 2.0 portot támogat
- Beépített billentyűzet-vezérlő, PS/2 egér támogatása

### Memória

- Duál csatornás architektúrájú DDR400/333/266 memóriamodulokat támogat
- Két puffervermentes, 2,5 V-os, 184 tús DDR SDRAM DIMM foglalattal rendelkezik
- Maximális kapacitása 2 GB

### Audio CODEC

- Megfelel a Microsoft WHQL/WLP 2.0 audio követelményeinek
- Kompatibilis az AC'97 2.3-as változatának szabványával
- kiváló minőségű differenciált Cd bemenet
- DVD audio lejátszás dupla mintavételezési arányú (96 kHz)
- kompatibilis a Direct Sound 3D™ technológiával

## Alaplapon levő LAN (választható)

Az alaplapon levő LAN jellemzői:

- Duál sebesség -- 100/10 Mbps
- MII interfész ethernet vezérlőnek
- Automatikus beállítás: 10/100, Teljes/fél duplex
- Megfelel az összes vonatkozó IEEE 802.3, 10Base-T és 100Base-Tx szabványnak

## Bővítési lehetőségek

Az alaplap a következő bővítési lehetőségekkel rendelkezik:

- Egy 16-szoros PCI Express
- Két 1-szeres PCI Express
- Két 32 bites PCI foglalat
- Egy AGP Express foglalat
- Két IDE csatlakozó, amely összesen négy IDE eszközt támogat
- Egy hajlékonylemez meghajtó interfész
- Két 7 tűs SATA csatlakozó
- Egy CNR foglalat

Ez az alaplap a 133/100/66MB/s átviteli sebességű Ultra DMA 'bus mastering' megoldást is támogatja.

## Beépített I/O

Az alaplapot az I/O portok és csatlakozók teljes készletével szerelték fel:

- Két PS/2 port az egér és a billentyűzet számára
- Egy soros port
- Egy párhuzamos port
- Nyolc USB port (4 a hátsó panelen, 4 elől)
- Egy LAN port (választható)
- Audio csatlakozók mikrofon, bemenet és kimenet számára

## BIOS Firmware

Az alaplapon levő AMI BIOS segítségével a felhasználó a rendszer sok paraméterét állíthatja be, például:

- Energiagazdálkodás
- Ébresztési riasztások
- CPU paraméterek
- CPU és memória időzítés

A firmware segítségével a processzor órajel-frekvenciáinak paramétereit is beállíthatják.



*Bizonyos hardverjellemzők és szoftverelemek előzetes bejelentés nélkül módosulhatnak.*