

Preface

Copyright

This publication, including all photographs, illustrations and software, is protected under international copyright laws, with all rights reserved. Neither this manual, nor any of the material contained herein, may be reproduced without written consent of the author.

Version 7.5c

Disclaimer

The information in this document is subject to change without notice. The manufacturer makes no representations or warranties with respect to the contents hereof and specifically disclaims any implied warranties of merchantability or fitness for any particular purpose. The manufacturer reserves the right to revise this publication and to make changes from time to time in the content hereof without obligation of the manufacturer to notify any person of such revision or changes.

Trademark Recognition

Microsoft, MS-DOS and Windows are registered trademarks of Microsoft Corp.

MMX, Pentium, Pentium-II, Pentium-III, Celeron are registered trademarks of Intel Corporation.

Other product names used in this manual are the properties of their respective owners and are acknowledged.

Federal Communications Commission (FCC)

This equipment has been tested and found to comply with the limits for a Class B digital device, pursuant to Part 15 of the FCC Rules. These limits are designed to provide reasonable protection against harmful interference in a residential installation. This equipment generates, uses, and can radiate radio frequency energy and, if not installed and used in accordance with the instructions, may cause harmful interference to radio communications. However, there is no guarantee that interference will not occur in a particular installation. If this equipment does cause harmful interference to radio or television reception, which can be determined by turning the equipment off and on, the user is encouraged to try to correct the interference by one or more of the following measures:

- Reorient or relocate the receiving antenna.
- Increase the separation between the equipment and the receiver.
- Connect the equipment onto an outlet on a circuit different from that to which the receiver is connected.
- Consult the dealer or an experienced radio/TV technician for help.

Shielded interconnect cables and a shielded AC power cable must be employed with this equipment to ensure compliance with the pertinent RF emission limits governing this device. Changes or modifications not expressly approved by the system's manufacturer could void the user's authority to operate the equipment.

Declaration of Conformity

This device complies with part 15 of the FCC rules. Operation is subject to the following conditions:

- This device may not cause harmful interference, and
- This device must accept any interference received, including interference that may cause undesired operation.

Canadian Department of Communications

This class B digital apparatus meets all requirements of the Canadian Interference-causing Equipment Regulations.

Cet appareil numérique de la classe B respecte toutes les exigences du Règlement sur le matériel brouilleur du Canada.

About the Manual

The manual consists of the following:

Chapter 1 Introducing the Mainboard	Describes features of the mainboard, and provides a shipping checklist. Go to ⇒ page 1
Chapter 2 Installing the Mainboard	Describes installation of mainboard components. Go to ⇒ page 7
Chapter 3 Using BIOS	Provides information on using the BIOS Setup Utility. Go to ⇒ page 21
Chapter 4 Using the Mainboard Software	Describes the mainboard software. Go to ⇒ page 33

TABLE OF CONTENTS

Preface	i
CHAPTER 1	1
Introducing the Mainboard	1
<i>Introduction</i>	1
<i>Checklist</i>	1
Standard Items	1
<i>Features</i>	2
<i>Choosing a Computer Case</i>	4
<i>Mainboard Components</i>	5
CHAPTER 2	7
Installing the Mainboard	7
<i>Safety Precautions</i>	7
<i>Quick Guide</i>	7
<i>Installing the Mainboard in a Case</i>	8
<i>Checking Jumper Settings</i>	8
Setting Jumpers	8
Checking Jumper Settings	9
Jumper Settings	9
<i>Connecting Case Components</i>	10
The SW1 Connector	11
<i>Installing Hardware</i>	12
Installing Memory Modules	12
Installing a Hard Disk Drive/CD-ROM	13
Installing a Floppy Diskette Drive	15
Installing Add-on Cards	16
Connecting Optional Devices	17
<i>Connecting I/O Devices</i>	19
CHAPTER 3	21
Using BIOS	21
<i>About the Setup Utility</i>	21
The Standard Configuration	21
Running the Setup Utility	22
<i>Using BIOS</i>	22
Standard CMOS Features	23
Advanced Setup Page	24
Power Management Setup Page	26
PCI / Plug and Play Setup	27
Load Optimal Settings	28
Load Best Performance Settings	28
Features Setup Page	28

CPU PnP Setup Page	30
Hardware Monitor Page.....	31
Change Password.....	32
Change or Remove the Password	32
Exit	32

CHAPTER 4 **33**

Using the Mainboard Software	33
<i>About the Software CD-ROM</i>	33
<i>Auto-installing under Windows 98/ME/2000/XP</i>	33
Running Setup	34
<i>Manual Installation</i>	36
<i>Utility Software Reference</i>	36

Chapter 1

Introducing the Mainboard

Introduction

Thank you choosing the K7SOM+ mainboard. This mainboard has an AMD Duron processor. This mainboard supports front-side bus speed of 266 MHz.

This mainboard integrates the SiS740 Northbridge and SiS962L Southbridge chipsets that support DDR 266MHz, Ultra DMA 33/66/100/133 function and remarkably high system performance under all types of system operations.

The mainboard supports the built-in AC97 Codec, two 32-bit PCI slots, one CNR (Communications and Networking Riser) slot, and a built-in 10BaseT/100BaseTX Network Interface (optional).

This mainboard has the embedded 256-bit 3D AGP Graphics Accelerator with 64MB frame buffer, supporting AGP 4X 266MHz mode up to 1GB/s bandwidth, which provides a direct connection between the graphics sub-system and memory so that the graphics do not have to compete for processor time with other devices on the PCI bus. The mainboard supports built-in USB 2.0 providing higher bandwidth implements Universal Serial Bus Specification Revision 2.0 and is compliant with UHCI 1.1 and EHCI 0.95.

There is a full set of I/O ports including two PS/2 ports for mouse and keyboard, one serial port, one parallel port, one VGA port and maximum six USB2.0 ports— four back-panel ports and onboard USB header USB2 providing two extra ports by connecting the Extended USB Module to the mainboard.

The board is Micro ATX size and has power connectors for an ATX power supply.

Checklist

Compare the mainboard's package contents with the following checklist:

Standard Items

- One mainboard
- One diskette drive ribbon cable (optional)
- One IDE drive ribbon cable
- Software support CD
- The User's Manual

Features

Processor	<ul style="list-style-type: none"> • Supports onboard AMD Duron processor • Supports 266 MHz Front-Side Bus
Chipset	<p>The SiS740 Northbridge and SiS962L Southbridge in this chipset in accordance with an innovative and scalable architecture with proven reliability and performance. A few of the chipset's advanced features are:</p> <ul style="list-style-type: none"> • Integrate a high performance and high quality 3D/2D Graphical Accelerator, Video Accelerator and Motion Compensation MPEG1/MPRII Video Decoder • Integrate a high performance 2.1GB/s DDR266 Memory controller to sustain the bandwidth demand from the integrated GUI, host processor, as well as the multi I/O masters • Integrate one Universal Serial Bus 2.0 Host Controllers, the Audio Controller with AC97 Interface, the Ethernet MAC Controller w/ standard MII interface, three Universal Serial Bus 1.1 Host Controllers, the IDE Master/Slave controllers, and SiS MuTIOL technology
Memory	<ul style="list-style-type: none"> • Two 184-pin DIMM sockets for DDR memory modules • Support DDR 266MHz memory bus • Maximum installed memory is 1GB
VGA	<ul style="list-style-type: none"> • Embedded 256-bit 3D AGP Graphics Accelerator with 64MB frame buffer • Supports AGP 4X 266 MHz mode up to 1GB/s bandwidth • Supports 333MHz true-color RAMDAC, resolution up to 2048 x 1536 x 16 bpp NI • Supports AGP Rev. 2.0 Spec. Compliant
Expansion Slots	<ul style="list-style-type: none"> • One CNR (Communications and Networking Riser) slot • Two 32-bit PCI slots for PCI 2.2-compliant bus interface
Onboard IDE channels	<ul style="list-style-type: none"> • Primary and Secondary PCI IDE channels • Support for PIO (programmable input/output) modes • Support for Multiword DMA modes • Support for Bus Mastering and Ultra DMA ATA 33/66/100/133 modes
Power Supply and Power Management	<ul style="list-style-type: none"> • ATX power supply connector • Meets ACPI 1.0b and APM 1.2 requirements, keyboard power on/off
AC'97 Audio Codec	<ul style="list-style-type: none"> • Compliant with AC'97 2.2 specification • Full-duplex Codec with independent and variable sampling rate • Earphone Buffer Built-In, SNR up to 90db • 4Ch DAC, support 4-channel speak-out • Advanced power management support

Onboard I/O Ports	<p>The mainboard has a full set of I/O ports and connectors:</p> <ul style="list-style-type: none"> • Two PS/2 ports for mouse and keyboard • One serial port • One VGA port • One parallel port • Six USB2.0 ports (four back-panel ports, onboard USB header providing two extra ports) • Audio jacks for microphone, line-in and line-out
Built-in Ethernet LAN (optional)	<ul style="list-style-type: none"> • 10Base-T/100Base-TX Physical Layer Solution • Dual Speed – 100/10 Mbps • MII Interface to Ethernet Controller/Configuration & Status • Auto Negotiation: 10/100, Full/Half Duplex • Meet All Applicable IEEE802.3, 10Base-T and 100Base-TX Standards
USB 2.0	<ul style="list-style-type: none"> • Compliant with Universal Serial Bus Specification Revision 2.0 • Compliant with Intel's Enhanced Host Controller Interface Specification Revision 0.95 • Compliant with Universal Host Controller Interface Specification Revision 1.1 • PCI multi-function device consists of two UHCI Host Controller cores for full-/low-speed signaling and one EHCI Host Controller core for high-speed signaling • Root hub consists 4 downstream facing ports with integrated physical layer transceivers shared by UHCI and EHCI Host Controller • Support PCI-Bus Power Management Interface Specification release 1.1 • Legacy support for all downstream facing ports
BIOS Firmware	<p>This mainboard uses AMI BIOS that enables users to configure many system features including the following:</p> <ul style="list-style-type: none"> • Hard drives, diskette drives, and peripherals • Power management • CPU parameters and memory timing • Hardware monitoring parameters <p>The firmware can also be used to set parameters for different processor clock speeds.</p>



Some hardware specifications and software items are subject to change without prior notice.

Choosing a Computer Case

There are many types of computer cases on the market. The mainboard complies with the specifications for the micro-ATX system case. Some features on the mainboard are implemented by cabling connectors on the mainboard to indicators and switches on the system case. Ensure that your case supports all the features required. The mainboard can support one floppy diskette drive and four enhanced IDE drives. Ensure that your case has sufficient power and space for all the drives that you intend to install.

Most cases have a choice of I/O templates in the rear panel. Make sure that the I/O template in the case matches the I/O ports installed on the rear edge of the mainboard.

This mainboard has a micro-ATX form factor of 24.4 x 19 cm. Choose a case that accommodates this form factor.

This concludes Chapter 1. The next chapter explains how to install the mainboard.

Mainboard Components

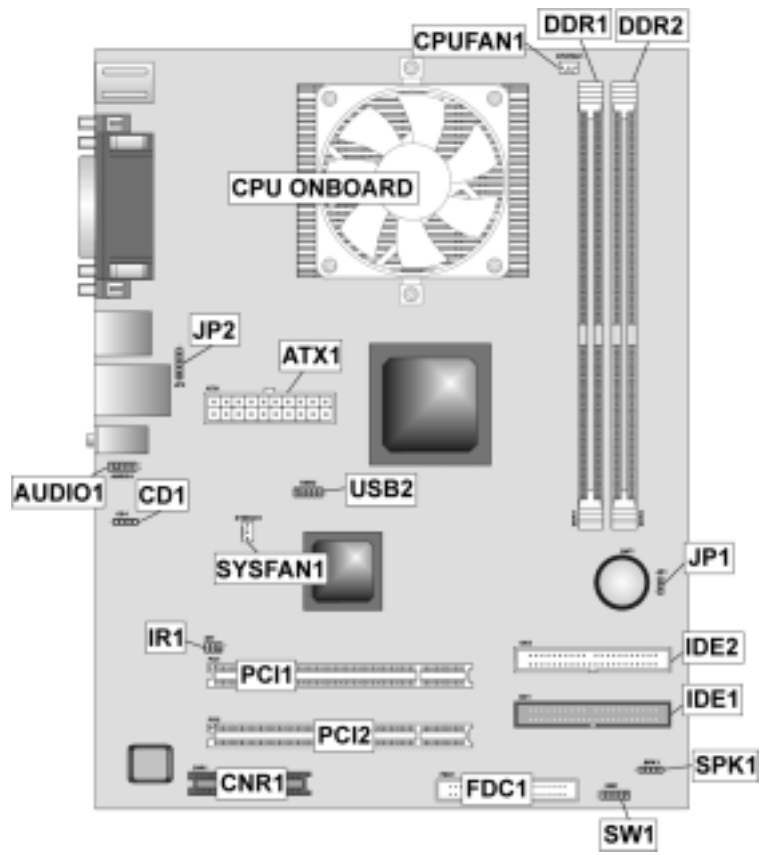


Table of Mainboard Components

Label	Component
ATX1	Standard 20-pin ATX power connector
AUDIO1	Front panel MIC/Speaker Out header
BAT1	Three volt realtime clock battery
CD1	CD-in connector
CNR1	Communications Networking Riser slot
CPUFAN1	CPU cooling fan
CPU ONBOARD	Onboard AMD Duron processor
DDR1 ~ DDR2	Two 184-pin DDR DIMM sockets
FDC1	Floppy disk drive connector
IDE1	Primary IDE channel
IDE2	Secondary IDE channel
IR1	Infrared cable header
JP1	Clear CMOS jumper
JP2	USB card reader connector
PCI1 ~ PCI2	Two 32-bit add-on card slots
PWRFAN1	Power fan connector
SPK1	Speaker connector
SW1	Panel connector for case switches and LEDs
SYSFAN1	System cooling fan
USB2	Connector for front panel USB ports

This concludes Chapter 1. The next chapter explains how to install the mainboard.

Chapter 2

Installing the Mainboard

Safety Precautions

Follow these safety precautions when installing the mainboard:

- Wear a grounding strap attached to a grounded device to avoid damage from static electricity.
- Discharge static electricity by touching the metal case of a safely grounded object before working on the mainboard.
- Leave components in the static-proof bags they came in.
- Hold all circuit boards by the edges. Do not bend circuit boards.

Quick Guide

This Quick Guide suggests the steps you can take to assemble your system with the mainboards.

The following table provides a reference for installing specific components:

Locating Mainboard Components	Go to page 5
Installing the Mainboard in a Case	Go to page 8
Setting Jumpers	Go to page 8
Installing Case Components	Go to page 8
Installing Memory	Go to page 12
Installing an HDD and CD-ROM Drive	Go to page 13
Installing an FDD	Go to page 15
Installing Add-on Cards	Go to page 16
Connecting Options	Go to page 17
Connecting Peripheral (I/O) Devices	Go to page 19

Installing the Mainboard in a Case

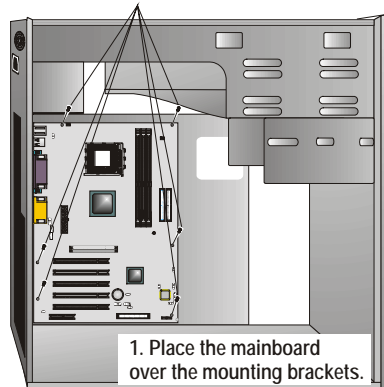
Refer to the following illustration and instructions for installing the mainboard in a case:

This illustration shows an example of a mainboard being installed in a tower-type case:

Note: Do not overtighten the screws as this can stress the mainboard.

Most system cases have mounting brackets installed in the case, which correspond to the holes in the mainboard. Place the mainboard over the mounting brackets and secure the mainboard onto the mounting brackets with screws.

2. Secure the mainboard with screws where appropriate.



Ensure that your case has an I/O template that supports the I/O ports and expansion slots on your mainboard.

Checking Jumper Settings

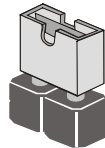
This section explains how to set jumpers for correct configuration of the mainboard.

Setting Jumpers

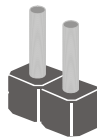
Use the mainboard jumpers to set system configuration options. Jumpers with more than one pin are numbered. When setting the jumpers, ensure that the jumper caps are placed on the correct pins.

The illustrations below show a 2-pin jumper. When the jumper cap is placed on both pins, the jumper is **SHORT**. If you remove the jumper cap, or place the jumper cap on just one pin, the jumper is **OPEN**.

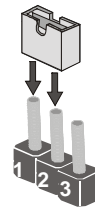
This illustration shows a 3-pin jumper. Pins 1 and 2 are **SHORT**.



Short

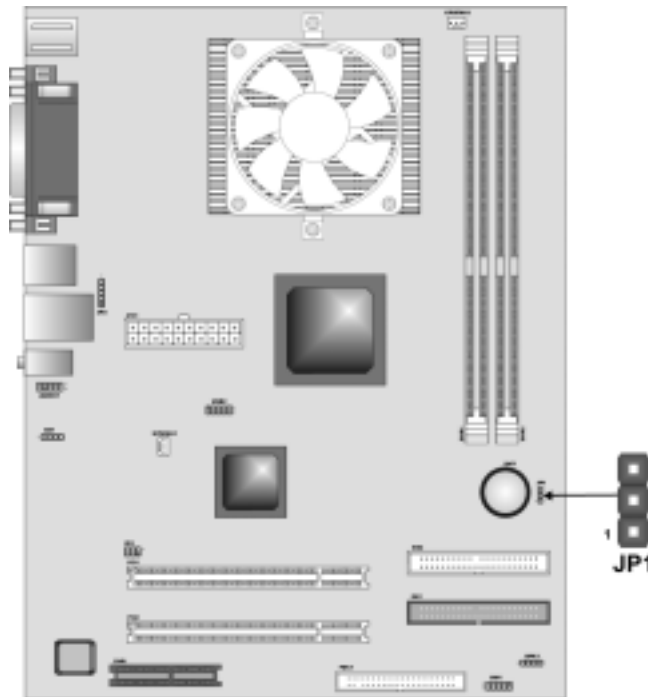


Open




Checking Jumper Settings

The following illustration shows the location of the mainboard jumpers. Pin 1 is labeled.



Jumper Settings

Jumper	Type	Description	Setting (default)
JP1	3-pin	Clear CMOS jumper	1-2: Clear CMOS 2-3: Normal



JP1: Clear CMOS Jumper

Use this jumper to clear the contents of the CMOS memory. You may need to clear the CMOS memory if the settings in the Setup Utility are incorrect and prevent your mainboard from operating. To clear the CMOS memory, disconnect all the power cables from the mainboard and then move the jumper cap into the CLEAR setting for a few seconds.

Connecting Case Components

After you have installed the mainboard into a case, you can begin connecting the mainboard components. Refer to the following:

<ol style="list-style-type: none"> 1. Connect the power connector from the power supply to the ATX1 connector on the mainboard. 2. Connect the CPU cooling fan cable to CPUFAN1. 3. If there is a cooling fan installed in the system chassis, connect the cable from the cooling fan to the SYSFAN1 fan power connector on the mainboard. 4. Connect the case switches and indicator LEDs to the SW1 header. 5. Connect the case speaker cable to SPK1. 	
--	--

ATX1: ATX 20-pin Power Connector

Pin	Signal Name	Pin	Signal Name
1	+3.3V	11	+3.3V
2	+3.3V	12	-12V
3	Ground	13	Ground
4	+5V	14	PS ON#
5	Ground	15	Ground
6	+5V	16	Ground
7	Ground	17	Ground
8	PWRGD	18	+5V
9	+5VSB	19	+5V
10	+12V	20	+5V

CPUFAN1/SYSFAN1: FAN Power Connectors

Pin	Signal Name	Function
1	GND	System Ground
2	+12V	Power +12V
3	Sense	Sensor

SPK1: Internal speaker

Pin	Signal Name
1	+5V
2	NC
3	GND
4	SPKR

The SW1 Connector

This panel connector provides a set of switch and LED connectors found on ATX case. Refer to the table below for information.



Pin	Signal	Pin	Signal
1	HD_LED_P	2	FP PWR/SLP
3	HD_LED_N	4	FP PWR/SLP
5	RESET_SW_N	6	POWER_SW_P
7	RESET_SW_P	8	POWER_SW_N
9	RSVD_DNU	10	KEY

Installing Hardware

Installing Memory Modules

This mainboard accommodates two 184-pin 2.5V unbuffered Double Data Rate SDRAM (DDR SDRAM) Dual Inline Memory Module (DIMM) sockets, and supports up to 1.0 GB of 266 MHz DDR SDRAM.

DDR SDRAM is a type of SDRAM that supports data transfers on both edges of each clock cycle (the rising and falling edges), effectively doubling the memory chip's data throughput. DDR DIMMs can synchronously work with 100 MHz or 133 MHz memory bus.

DDR SDRAM provides 1.6 GB/s or 2.1 GB/s data transfer rate depending on whether the bus is 100 MHz or 133 MHz. DDR SDRAM uses additional power and ground lines and requires 184-pin 2.5V unbuffered DIMM module.



Do not remove any memory module from its antistatic packaging until you are ready to install it on the mainboard. Handle the modules only by their edges. Do not touch the components or metal parts. Always wear a grounding strap when you handle the modules.

Installation Procedure

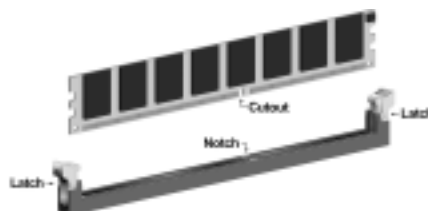
Refer to the following to install the memory modules.

1. This mainboard supports unbuffered DDR SDRAM only. Do not attempt to insert any other type of DDR SDRAM into the slots.

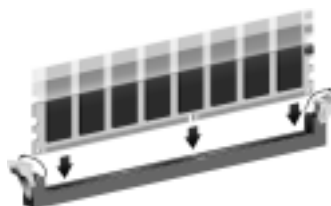


2. Push the latches on each side of the DIMM slot down.

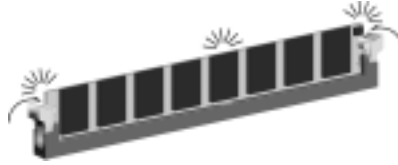
3. Align the memory module with the slot. The DIMM slots are keyed with notches and the DIMMs are keyed with cutouts so that they can only be installed correctly.



4. Check that the cutouts on the DIMM module edge connector match the notches in the DIMM slot.



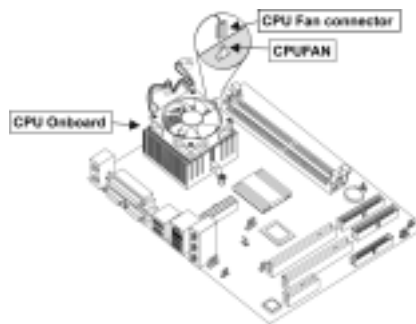
5. Install the DIMM module into the slot and press it firmly down until it seats correctly. The slot latches are levered upwards and latch on to the edges of the DIMM.



6. Install any remaining DIMM modules.

Connecting CPU Fan Connector

Plug the CPU fan power cable into the CPU cooling fan power supply on the mainboard (CPUFAN).



Installing a Hard Disk Drive/CD-ROM

This section describes how to install IDE devices such as a hard disk drive and a CD-ROM drive.

About IDE Devices

Your mainboard has a primary and secondary IDE channel interface (IDE1 and IDE2). An IDE ribbon cable supporting two IDE devices is bundled with the mainboard.

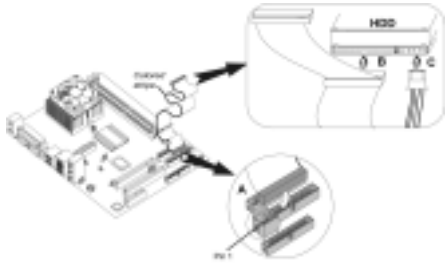
If you want to install more than two IDE devices, get a second IDE cable and you can add two more devices to the secondary IDE channel.

IDE devices have jumpers or switches that are used to set the IDE device as MASTER or SLAVE. Refer to the IDE device user's manual. When installing two IDE devices on one cable, ensure that one device is set to MASTER and the other device is set to SLAVE. The documentation of your IDE device explains how to do this.

About UltraDMA

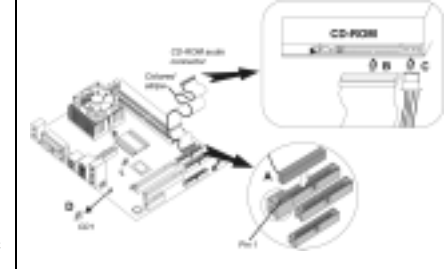
This mainboard supports UltraDMA 66/100/133. UDMA is a technology that accelerates the performance of devices in the IDE channel. To maximize performance, install IDE devices that support UDMA and use 80-pin IDE cables that support UDMA 66/100/133.

Installing a Hard Disk Drive

1. Install the hard disk drive into the drive cage in your system case.	
<p>2. Plug the IDE cable into IDE1 (A):</p> <p>Note: Ribbon cable connectors are usually keyed so that they can only be installed correctly on the device connector. If the connector is not keyed, make sure that you match the pin-1 side of the cable connector with the pin-1 side of the device connector. Each connector has the pin-1 side clearly marked. The pin-1 side of each ribbon cable is always marked with a colored stripe on the cable.</p>	
3. Plug an IDE cable connector into the hard disk drive IDE connector (B). It doesn't matter which connector on the cable you use.	
4. Plug a power cable from the case power supply into the power connector on the hard disk drive (C).	

When you first start up your system, the BIOS should automatically detect your hard disk drive. If it doesn't, enter the Setup Utility and use the IDE Hard Disk Auto Detect feature to configure the hard disk drive that you have installed.

Installing a CD-ROM/DVD Drive

1. Install the CD-ROM/DVD drive into the drive cage in your system case.	
<p>2. Plug the IDE cable into IDE1 (A). If you have already installed an HDD, use the other connector on the IDE cable.</p> <p>Note: Ribbon cable connectors are usually keyed so that they can only be installed correctly on the device connector. If the connector is not keyed, make sure that you match the pin-1 side of the cable connector with the pin-1 side of the device connector. Each connector has the pin-1 side clearly marked. The pin-1 side of each ribbon cable is always marked with a colored stripe on the cable.</p>	
3. Plug an IDE cable connector into the CD-ROM/DVD drive IDE connector (B). It doesn't matter which connector on the cable you use.	
4. Plug a power cable from the case power supply into the power connector on the CD-ROM/DVD drive (C).	
5. Use the audio cable provided with the CD-ROM/DVD drive to connect to the mainboard CD-in connector CD1 (D).	

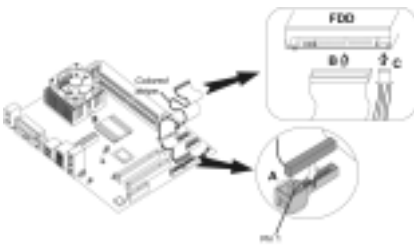
When you first start up your system, the BIOS should automatically detect your CD-ROM/DVD drive. If it doesn't, enter the Setup Utility and configure the CD-ROM/DVD drive that you have installed.

CD1

Pin	Signal Name
1	CD IN L
2	GND
3	GND
4	CD IN R

Installing a Floppy Diskette Drive

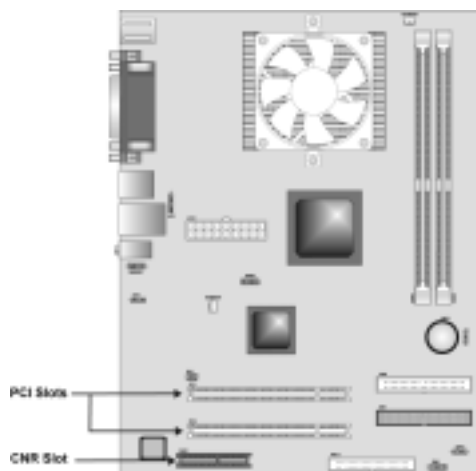
The mainboard has a floppy diskette drive (FDD) interface and ships with a diskette drive ribbon cable that supports one or two floppy diskette drives. You can install a 5.25-inch drive and a 3.5-inch drive with various capacities. The floppy diskette drive cable has one type of connector for a 5.25-inch drive and another type of connector for a 3.5-inch drive.

<p>1. Install the FDD into the drive cage in your system case.</p> <p>2. Plug the FDD cable into FDC (A):</p> <p>Note: Ribbon cable connectors are usually keyed so that they can only be installed correctly on the device connector. If the connector is not keyed, make sure that you match the pin-1 side of the cable connector with the pin-1 side of the device connector. Each connector has the pin-1 side clearly marked. The pin-1 side of each ribbon cable is always marked with a colored stripe on the cable.</p>	
<p>3. Plug the correct connector on the FDD cable for the 5.25-inch or 3.5-inch drive into the FDD connector (B).</p>	
<p>4. Plug a power cable from the case power supply into the power connector on the FDD (C).</p>	

When you first start up your system, go immediately to the Setup Utility to configure the floppy diskette drives that you have installed.

Installing Add-on Cards

The slots in this mainboard are designed to hold expansion cards and connect them to the system bus. Expansion slots are a means of adding or enhancing the mainboard's features and capabilities. With these efficient facilities, you can increase the mainboard's capabilities by adding hardware which performs tasks that are not part of the basic system.



PCI Slots PCI slots are used to install expansion cards that have the 32-bit PCI interface.

CNR Slot This slot is used to insert CNR cards with Modem and Audio functionality.

Note: Before installing an add-on card, check the documentation for the card carefully. If the card is not Plug and Play, you may have to manually configure the card before installation.

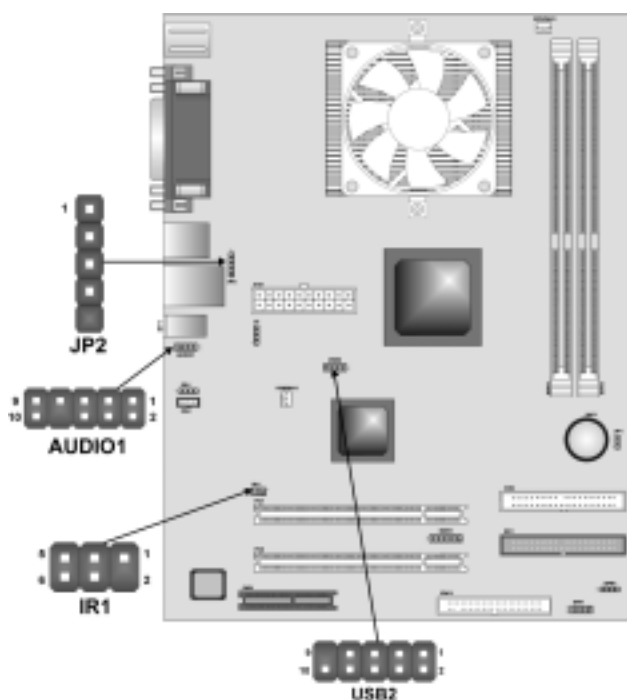
Follow these instructions to install an add-on card:

1. Remove a blanking plate from the system case corresponding to the slot you are going to use.	
2. Install the edge connector of the add-on card into the expansion slot. Ensure that the edge connector is correctly seated in the slot.	A 3D perspective diagram showing an add-on card being inserted into a slot on the mainboard. The card is shown partially inserted, with its edge connector fitting into the slot. Labels with arrows point to the 'Add-on card' and the 'Edge connector'.
3. Secure the metal bracket of the card to the system case with a screw.	

Note: For some add-on cards, for example graphics adapters and network adapters, you have to install drivers and software before you can begin using the add-on card.

Connecting Optional Devices

Refer to the following for information on connecting the mainboard's optional devices:



AUDIO1: Front Panel Audio header

This header allows the user to install auxiliary front-oriented microphone and line-out ports for easier access.

Pin	Signal Name	Function
1	AUD_MIC	Front Panel Microphone input signal
2	AUD_GND	Ground used by Analog Audio Circuits
3	AUD_MIC_BIAS	Microphone Power
4	AUD_VCC	Filtered +5 V used by Analog Audio Circuits
5	AUD_FPOUT_R	Right Channel Audio signal to Front Panel
6	AUD_RET_R	Right Channel Audio signal to Return from Front Panel
7	HP_ON	Reserved for future use to control Head-phone Amplifier
8	KEY	No Pin
9	AUD_FPOUT_L	Left Channel Audio signal to Front Panel
10	AUD_RET_L	Left Channel Audio signal Return from Front Panel

USB2: Extended USB header

The mainboard has USB ports installed on the rear edge I/O port array. Some computer cases have a special module that mounts USB ports at the front of the case. If you have this kind of case, use auxiliary USB connectors USB2 to connect the front-mounted ports to the mainboard.

Pin	Signal Name	Function
1	VREG_FP_USBPWR0	Front Panel USB Power
2	VREG_FP_USBPWR0	Front Panel USB Power
3	USB_FP_P0-	USB Port 0 Negative Signal
4	USB_FP_P1-	USB Port 1 Negative Signal
5	USB_FP_P0+	USB Port 0 Positive Signal
6	USB_FP_P1+	USB Port 1 Positive Signal
7	GND	Ground
8	GND	Ground
9	KEY	No pin
10	USB_FP_OC0	Overcurrent signal

Note: Please make sure that the USB cable has the same pin assignment as indicated above. A different pin assignment may cause damage or system hang-up.

JP2: USB Card Reader connector

This connector is for connecting internal USB card reader. You can use a card reader to read or transfer files and digital images to your computer.

Pin	Signal Name	Function
1	USBVCC	+5V
2	USB1-	Data signal port 1-
3	USB1+	Data signal port 1+
4	GND	Ground
5	Key	No pin

Note: The JP2 is shared with one of the USB ports of the I/O back panel. The USB port is located beside the serial port connectors. See "Connecting I/O Devices" for more information.



Please check the pin assignment of the cable and the USB header on the mainboard. Make sure the pin assignment will match before plugging in. Any incorrect usage may cause unexpected damage to the system.

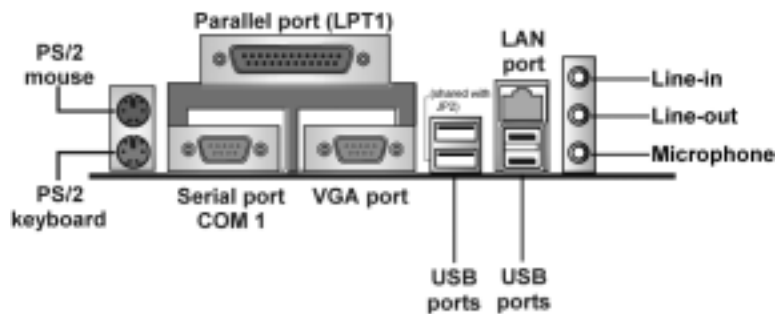
IR1: Serial infrared port

The mainboard supports an Infrared (IR1) data port. Infrared ports allow the wireless exchange of information between your computer and similarly equipped devices such as printers, laptops, Personal Digital Assistants (PDAs), and other computers.

Pin	Signal Name	Function
1	NC	Not connected
2	KEY	No pin
3	+5V	IR Power
4	GND	Ground
5	IRTX	IrDA serial output
6	IRRX	IrDA serial input

Connecting I/O Devices

The backplane of the mainboard has the following I/O ports:



- PS/2 Mouse** Use the upper PS/2 port to connect a PS/2 pointing device.
- PS/2 Keyboard** Use the lower PS/2 port to connect a PS/2 keyboard.
- LPT1** Use LPT1 to connect printers or other parallel communications devices.
- COM1** Use the COM ports to connect serial devices such as mice or fax/modems. COM1 is identified by the system as COM1/3.
- VGA** Use the VGA port to connect VGA devices.
- Audio Ports** Use the three audio ports to connect audio devices. The first jack is for stereo line-in signal. The second jack is for stereo line-out signal. The third jack is for microphone.
- LAN Port (optional)** Connect an RJ-45 jack to the LAN port to connect your computer to the Network.
- USB Ports** Use the USB ports to connect USB devices.

Note: One of the USB port is shared with the JP2 connector.

External Connector Color Coding

Many connectors now use standard colors as shown in the table below.

Connector	Color
Audio line-in	Light blue
Audio line-out	Lime
Digital monitor/flat panel	White
IEEE 1394	Grey
Microphone	Pink
MIDI/game	Gold
Parallel	Burgundy
PS/2-compatible keyboard	Purple
PS/2-compatible mouse	Green
Serial	Teal or Turquoise
Speaker out/subwoofer	Orange
Right-to-left speaker	Brown
USB	Black
Video out	Yellow
SCSI, network, telephone, modem	None

This concludes Chapter 2. The next chapter covers the BIOS.

Chapter 3

Using BIOS

About the Setup Utility

The computer uses the latest AMI BIOS with support for Windows Plug and Play. The CMOS chip on the mainboard contains the ROM setup instructions for configuring the mainboard BIOS.

The BIOS (Basic Input and Output System) Setup Utility displays the system's configuration status and provides you with options to set system parameters. The parameters are stored in battery-backed-up CMOS RAM that saves this information when the power is turned off. When the system is turned back on, the system is configured with the values you stored in CMOS.

The BIOS Setup Utility enables you to configure:

- Hard drives, diskette drives, and peripherals
- Video display type and display options
- Password protection from unauthorized use
- Power management features

The settings made in the Setup Utility affect how the computer performs. Before using the Setup Utility, ensure that you understand the Setup Utility options.

This chapter provides explanations for Setup Utility options.

The Standard Configuration

A standard configuration has already been set in the Setup Utility. However, we recommend that you read this chapter in case you need to make any changes in the future.

This Setup Utility should be used:

- when changing the system configuration
- when a configuration error is detected and you are prompted to make changes to the Setup Utility
- when trying to resolve IRQ conflicts
- when making changes to the Power Management configuration
- when changing the password or making other changes to the Security Setup

Running the Setup Utility

Each time your computer starts, before the operating system loads, a message appears on the screen that prompts you to "Hit if you want to run *SETUP*". When you see this message, press the **Delete** key and the Main menu page of the Setup Utility appears on your monitor.

AMIBIOS SIMPLE SETUP UTILITY – VERSION 1.21.09
(C) 2000 American Megatrends, Inc. All Rights Reserved

Standard CMOS Setup	Features Setup
Advanced Setup	CPU PnP Setup
Power Management Setup	Hardware Monitor
PCI / Plug and Play Setup	Change Password
Load Optimal Settings	Exit
Load Best Performance Settings	
Esc : Quit ↑ ↓ ← → : Select Item (Shift)F2 : Change Color F5 : Old Values F6 : Optimal values F7 : Best performance values F10 : Save&Exit	
Standard CMOS setup for changing time, date, hard disk type, etc.	

BIOS Navigation Keys

The BIOS navigation keys are listed below:

Key	Function
Esc	Exits the current menu
←↑↓→	Scrolls through the items on a menu
+/-/PU/PD	Modifies the selected field's values
F10	Saves the current configuration and exits setup
F1	Displays a screen that describes all key functions
F5	Loads previously saved values to CMOS
F6	Loads a minimum configuration for troubleshooting.
F7	Loads an optimum set of values for peak performance

Using BIOS

When you start the Setup Utility, the main menu appears. The main menu of the Setup Utility displays a list of the options that are available. A highlight indicates which option is currently selected. Use the cursor arrow keys to move the highlight to other options. When an option is highlighted, execute the option by pressing <Enter>.

Some options lead to pop-up dialog boxes that prompt you to verify that you wish to execute that option. Other options lead to dialog boxes that prompt you for information.

Some options (marked with a triangle ►) lead to submenus that enable you

to change the values for the option. Use the cursor arrow keys to scroll through the items in the submenu.

In this manual, default values are enclosed in parenthesis. Submenu items are denoted by a triangle ►.

Standard CMOS Features

Use this page to set basic information such as the date, the time, the IDE devices, and the diskette drives. If you press the F3 key, the system will automatically detect and configure the hard disks on the IDE channels.

AMBIOS SETUP – STANDARD CMOS SETUP										
(C) 2000 American Megatrends, Inc. All Rights Reserved										
Date (mm/dd/yy): Thu Apr 10, 2003										
Time (hh/mm/ss): 18:06:57										
	Type	Size	Cyln	Head	WPcom	Sec	LBA Mode	Blk Mode	PIO Mode	32Bit Mode
Pri Master	: Auto									On
Pri Slave	: Auto									On
Sec Master	: Auto									On
Sec Slave	: Auto									On
Floppy Drive A: 1.44 MB 31/2										
Floppy Drive B : Not Installed										
Month : Jan – Dec					ESC : Exit					
Day : 01 – 31					↑↓ : Select Item					
Year : 1901 – 2099					PU/PD/+/- : Modify					
					(Shift)F2 : Color					
					F3 : Detect All HDD					

Date & Time

Use these items to set the system date and time

Pri Master/Pri Slave/Sec Master/Sec Slave

Use these items to configure devices connected to the Primary and Secondary IDE channels. To configure an IDE hard disk drive, choose *Auto*. If the *Auto* setting fails to find a hard disk drive, set it to *User*, and then fill in the hard disk characteristics (Size, Cyls, etc.) manually. If you have a CD-ROM drive, select the setting *CDROM*. If you have an ATAPI device with removable media (e.g. a ZIP drive or an LS-120) select *Floptical*.

Floppy Drive A/Floppy Drive B

Use these items to set the size and capacity of the floppy diskette drive(s) installed in the system.

Advanced Setup Page

Use this page to set more advanced information about your system. Take some care with this page. Making changes can affect the operation of your computer.

AMBIOS SETUP – ADVANCED SETUP (C) 2000 American Megatrends, Inc. All Rights Reserved		
Shared Memory Size	32 MB	
Quick Boot	Enabled	
1 st Boot Device	IDE-0	
2 nd Boot Device	Floppy	
3 rd Boot Device	CDROM	
Try Other Boot Devices	Yes	
S.M.A.R.T. for Hard Disks	Disabled	
BootUp Num-Lock	On	
Floppy Drive Swap	Disabled	
Floppy Drive Seek	Disabled	
Password Check	Setup	ESC : Quit ↑↓←→ : Select Item
Boot To OS/2 > 64MB	No	F1 : Help PU/PD/+/- : Modify
L2 Cache	WriteBack	F5 : Old Values (Shift)F2 : Color
System BIOS Cacheable	Enabled	F6 : Load BIOS Defaults
Graphic Win Size	64MB	F7 : Load Setup Defaults
DRAM CAS# Latency	3T	
Timing Setting Mode	Normal	
Auto Detect DIMM/PCI Clk	Enabled	
Spread Spectrum	Disabled	

Share Memory Size

This item lets you allocate a portion of the main memory for the onboard VGA display application with 16/32/64MB options.

Quick Boot

If you enable this item, the system starts up more quickly by elimination of some of the power on test routines.

1st Boot Device/2nd Boot Device/3rd Boot Device

Use these items to determine the device order the computer uses to look for an operating system to load at start-up time.

Try Other Boot Devices

If you enable this item, the system will also search for other boot devices if it fails to find an operating system from the first two locations.

S.M.A.R.T. for Hard Disks

Enable this item if any IDE hard disks support the S.M.A.R.T. (Self-Monitoring, Analysis and Reporting Technology) feature.

BootUp Num-Lock

This item determines if the Num Lock key is active or inactive at system start-up time.

Floppy Drive Swap

If you have two diskette drives installed and you enable this item, drive A becomes drive B and drive B becomes drive A.

Floppy Drive Seek

If you enable this item, your system will check all floppy disk drives at start up. Disable this item unless you are using an old 360KB drive.

Password Check

If you have entered a password for the system, use this item to determine if the password is required to enter the Setup Utility (*Setup*) or required both at start-up and to enter the Setup Utility (*Always*).

Boot to OS/2 > 64MB

Enable this item if you are booting the OS/2 operating system and you have more than 64MB of system memory installed.

L2 Cache

Leave these items enabled since all the processors that can be installed on this board have internal L2 cache memory.

System BIOS Cacheable

If you enable this item, a segment of the system BIOS will be cached to main memory for faster execution.

Graphic Win Size

This item defines the size of aperture if you use a graphic adapter.

DRAM CAS# Latency

This item determines the operation of the DRAM memory CAS (column address strobe). We recommend that you leave this item at the default value. The 2T setting requires faster memory that specifically supports this mode.

Timing Setting Mode

This item determines the timing setting mode of the memory. We recommend you leave this item at the default value.

Auto Detect DIMM/PCI Clk

Use this item to enable the DIMMs or PCI slots to detect automatically device then generating clock.

Spread Spectrum

If you enable spread spectrum, it can significantly reduce the EMI (Electro-Magnetic Interference) generated by the system.

Power Management Setup Page

This page sets some of the parameters for system power management operation.

AMIBIOS SETUP – POWER MANAGEMENT SETUP (C) 2000 American Megatrends, Inc. All Rights Reserved		
ACPI Aware O/S	Yes	
Power Management	Enabled	
Suspend Time Out	Disabled	
Hard Disk Time Out	Disabled	
Resume On RTC Alarm	Disabled	
RTC Alarm Date	15	ESC : Quit ↑↓←→ : Select Item
RTC Alarm Hour	12	F1 : Help PU/PD/+/- : Modify
RTC Alarm Minute	30	F5 : Old Values (Shift)F2 : Color
RTC Alarm Second	00	F6 : Load Optimal values
LAN/Ring Power On	Disabled	F7 : Load Best performance values
Keyboard Power On	Disabled	

ACPI Aware O/S

Enable this item if you are using an O/S that supports ACPI function such as Windows 98/ME /2000.

Power Management

Use this item to select a power management scheme. Both APM and ACPI are supported.

Suspend Time Out

This sets the timeout for Suspend mode in minutes. If the time selected passes without any system activity, the computer will enter power-saving Suspend mode.

Hard Disk Time Out

This sets the timeout to power down the hard disk drive, if the time selected passes without any hard disk activity.

Resume On RTC Alarm / Date / Hour / Minute / Second

The system can be turned off with a software command. If you enable this item, the system can automatically resume at a fixed time based on the system's RTC (realtime clock). Use the items below this one to set the date and time of the wake-up alarm. You must use an ATX power supply in order to use this feature.

LAN/Ring Power On

Your system can enter a software power down. If you enable this item, the system can automatically resume if there is traffic on the network adapter.

Keyboard Power On

If you enable this item, you can turn the system on and off by pressing hot keys on the keyboard. You must enable the Keyboard Power On jumper and use an ATX power supply in order to use this feature.

PCI / Plug and Play Setup

This page sets some of the parameters for devices installed on the PCI bus and devices that use the system plug and play capability.

AMIBIOS SETUP - PCI / PLUG AND PLAY SETUP (C) 2000 American Megatrends, Inc. All Rights Reserved	
Plug and Play Aware O/S	Yes
Primary Graphics Adapter	PCI
Allocate IRQ to PCI VGA	Yes
PCI IDE BusMaster	Disabled
ESC : Quit ↑↓←→ : Select Item	
F1 : Help PU/PD/+/- : Modify	
F5 : Old Values (Shift)F2 : Color	
F6 : Load BIOS Defaults	
F7 : Load Setup Defaults	

Plug and Play Aware O/S

Enable this item if you are using an O/S that supports Plug and Play such as Windows 95/98/ME.

Primary Graphics Adapter

This item indicates if the primary graphics adapter uses the PCI or the AGP bus. The default PCI setting still lets the onboard display work and allows the use of a second display card installed in a PCI slot.

Allocate IRQ to PCI VGA

If this item is enabled, an IRQ will be assigned to the PCI VGA graphics system. You set this value to No to free up an IRQ.

PCI IDE BusMaster

This item enables or disables the DMA under DOS mode. We recommend you to leave this item at the default value.

Load Optimal Settings

If you select this item and press **Enter** a dialog box appears. If you press **Y**, and then **Enter**, the Setup Utility loads a set of fail-safe default values. These default values are not very demanding and they should allow your system to function with most kinds of hardware and memory chips.

Note: It is highly recommended that users enter this option to load optimal values for accessing the best performance.

Load Best Performance Settings

If you select this item and press **Enter** a dialog box appears. If you press **Y**, and then **Enter**, the Setup Utility loads a set of best-performance default values. These default values are quite demanding and your system might not function properly if you are using slower memory chips or other low-performance components.

Features Setup Page

This page sets some of the parameters for peripheral devices connected to the system.

AMIBIOS SETUP – FEATURES SETUP (C) 2000 American Megatrends, Inc. All Rights Reserved		
OnBoard FDC	Enabled	
OnBoard Serial PortA	3F8h/COM1	
OnBoard IR Port	Disabled	
OnBoard Parallel Port	378h	
Parallel Port Mode	ECP	
Parallel Port IRQ	7	
Parallel Port DMA	3	
OnBoard PCI IDE	Both	ESC : Quit ↑↓←→ : Select Item
Audio Device	Enabled	F1 : Help PU/PD/+/- : Modify
Modem Device	Enabled	F5 : Old Values (Shift)F2 : Color
Ethernet Device	Enabled	F6 : Load BIOS Defaults
USB Function Support	Enabled	F7 : Load Setup Defaults
USB Function for DOS	Disabled	
ThumbDrive for DOS	Disabled	

OnBoard FDC

Use this item to enable or disable the onboard floppy disk drive interface.

OnBoard Serial PortA

Use these items to enable or disable the onboard COM1/2 serial port, and to assign a port address.

OnBoard Ir Port

Use this item to define the protocol for an infrared port if you have installed an optional IR port. The options are IrDA and ASKIR.

Onboard Parallel Port

Use this item to enable or disable the onboard LPT1 parallel port, and to assign a port address. The Auto setting will detect and available address.

Parallel Port Mode

Use this item to set the parallel port mode. You can select SPP (Standard Parallel Port), ECP (Extended Capabilities Port), EPP (Enhanced Parallel Port), or ECP + EPP.

Parallel Port IRQ

Use this item to assign either IRQ 5 or 7 to the parallel port.

Parallel Port DMA

Use this item to assign a DMA channel to the parallel port. The options are 0, 1 and 3.

Onboard PCI IDE

Use this item to enable or disable either or both of the onboard Primary and Secondary IDE channels.

Audio Device

This item enables or disables the onboard AC'97 audio chip.

Modem Device

This item enables or disables the onboard AC'97 modem chip.

Ethernet Device

This item enables or disables the LAN chip.

USB Function Support

Enable this item if you plan to use the USB ports on this mainboard.

USB Function for DOS

Enable this item if you plan to use the USB ports on this mainboard in a DOS environment.

ThumbDrive for DOS

Enable this item to make a small portion of memory storage device for the USB ports.

CPU PnP Setup Page

This page lets you manually configure the mainboard for the CPU. The system will automatically detect the kind of CPU that you have installed and make the appropriate adjustments to the items on this page.

AMIBIOS SETUP - CPU PnP SETUP	
(C) 2000 American Megatrends, Inc. All Rights Reserved	
CPU Type	Duron
CPU Core Voltage	1.648V
ESC : Quit ↑↓←→ : Select Item	
F1 : Help PU/PD/+/- : Modify	
F5 : Old Values (Shift) F2 : Color	
F6 : Load Optimal values	
F7 : Load Best performance values	

CPU Type

This item shows the type of the CPU installed in your system.

CPU Core Voltage

This item shows the core voltage of the CPU installed in your system.

Note: If you manually set the wrong speed and the system won't run properly, press the **Page Up** key while the system is booting and a default setting will replace the incorrect CPU setting.

Hardware Monitor Page

This page sets some of the parameters for the hardware monitoring function of this mainboard.

AMIBIOS SETUP - HARDWARE MONITOR (C) 2000 American Megatrends, Inc. All Rights Reserved		
** System Hardware ***		
Vcore	1.616V	
Vcc 2.5V	2.496V	
Vcc 3.3V	3.392V	
Vcc	4.945V	
+12V	12.032V	
SB3V	3.472V	
SB5V	5.026V	
VBAT	3.472V	
SYSTEM Fan Speed	0 RPM	ESC : Quit ↑↓←→ : Select Item
CPU Fan Speed	1308 RPM	F1 : Help PU/PD/+/- : Modify
SYSTEM Temperature	31°C/87°F	F5 : Old Values (Shift)F2 : Color
CPU Temperature	39°C/102°F	F6 : Load Optimal values
		F7 : Load Best Performance Values

Voltage Measurements & FAN Speeds

These items indicate cooling fan speeds in RPM and the various system voltage measurements.

System / CPU Temperature

These items display CPU and system temperature measurement.

Change Password

If you highlight this item and press **Enter**, a dialog box appears which lets you enter a Supervisor password. You can enter no more than six letters or numbers. Press **Enter** after you have typed in the password. A second dialog box asks you to retype the password for confirmation. Press **Enter** after you have retyped it correctly. The password is then required to access the Setup Utility or for that and at start-up, depending on the setting of the Password Check item in Advanced Setup.

Change or Remove the Password

Highlight this item, press Enter and type in the current password. At the next dialog box, type in the new password, or just press Enter to disable password protection.

Exit

Highlight this item and press **Enter** to save the changes that you have made in the Setup Utility configuration and exit the program. When the Save and Exit dialog box appears, press **Y** to save and exit, or press **N** to exit without

Chapter 4

Using the Mainboard Software

About the Software CD-ROM

The support software CD-ROM that is included in the mainboard package contains all the drivers and utility programs needed to properly run the bundled products. Below you can find a brief description of each software program, and the location for your mainboard version. More information on some programs is available in a README file, located in the same directory as the software.

Note: Never try to install software from a folder that is not specified for use with your mainboard.

Before installing any software, always inspect the folder for files named README.TXT, INSTALL.TXT, or something similar. These files may contain important information that is not included in this manual.

Auto-installing under Windows 98/ME/2000/XP

The Auto-install CD-ROM makes it easy for you to install the drivers and software for your mainboard.

Note: If the Auto-install CD-ROM does not work on your system, you can still install drivers through the file manager for your OS (for example, Windows Explorer). Refer to Utility Folder Installation Notes later in this chapter.

The support software CD-ROM disc loads automatically under Windows 98/ME/2000/XP. When you insert the CD-ROM disc in the CD-ROM drive, the autorun feature will automatically bring up the install screen. The screen has three buttons on it, Setup, Browse CD and Exit.



Note: If the opening screen doesn't appear, double-click the file "setup.exe" in the root directory.

Setup Tab

Setup	Click the Setup button to run the software installation program. Select from the menu which software you want to install.
Browse CD	<p>The Browse CD button is the standard Windows command that allows you to open Windows Explorer and show the contents of the support CD.</p> <p>Before installing the software from Windows Explorer, look for a file named README.TXT, INSTALL.TXT or something similar. This file may contain important information to help you install the software correctly.</p> <p>Some software is installed in separate folders for different operating systems, such as DOS, WIN NT, or WIN98/95. Always go to the correct folder for the kind of OS you are using.</p> <p>To install the software, execute a file named SETUP.EXE or INSTALL.EXE by double-clicking the file and then following the instructions on the screen.</p>
Exit	The Exit button closes the Auto Setup window.

Application Tab

Lists the software utilities that are available on the CD.

Read Me Tab

Displays the path for all software and drivers available on the CD.

Running Setup

Follow these instructions to install device drivers and software for the mainboard:

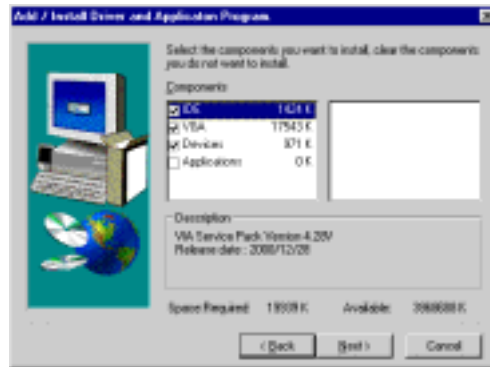
1. Click **Setup**. The installation program begins:



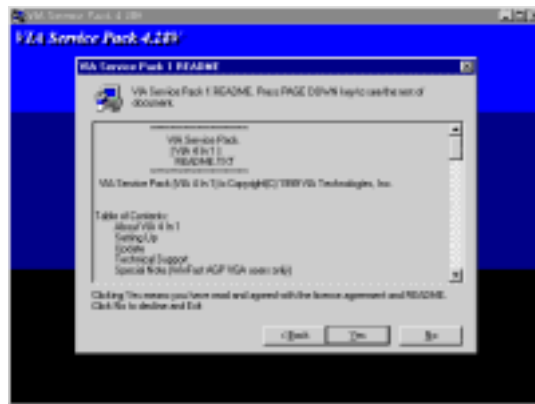
Note: The following screens are examples only. The screens and driver lists will be different according to the mainboard you are installing.

The mainboard identification is located in the upper left-hand corner.

2. Click **Next**. The following screen appears:



3. Check the box next to the items you want to install. The default options are recommended.
4. Click **Next** run the Installation Wizard. An item installation screen appears:



5. Follow the instructions on the screen to install the items.

Drivers and software are automatically installed in sequence. Follow the on-screen instructions, confirm commands and allow the computer to restart a few times to complete the installation.

Manual Installation

Insert the CD in the CD-ROM drive and locate the PATH.DOC file in the root directory. This file contains the information needed to locate the drivers for your mainboard.

Look for the chipset and mainboard model; then browse to the directory and path to begin installing the drivers. Most drivers have a setup program (SETUP.EXE) that automatically detects your operating system before installation. Other drivers have the setup program located in the operating system subfolder.

If the driver you want to install does not have a setup program, browse to the operating system subfolder and locate the readme text file (README.TXT or README.DOC) for information on installing the driver or software for your operating system.

Utility Software Reference

All the utility software available from this page is Windows compliant. They are provided only for the convenience of the customer. The following software is furnished under license and may only be used or copied in accordance with the terms of the license.

Note: These software(s) are subject to change at anytime without prior notice.
Please refer to the support CD for available software.

AWARD Flash Memory Utility

This utility lets you erase the system BIOS stored on a Flash Memory chip on the mainboard, and lets you copy an updated version of the BIOS to the chip. Proceed with caution when using this program. If you erase the current BIOS and fail to write a new BIOS, or write a new BIOS that is incorrect, your system will malfunction. Refer to Chapter 3, *Using BIOS* for more information.

WinFlash Utility

The Award WinFlash utility is a Windows version of the DOS Award BIOS flash writer utility. The utility enables you to flash the system BIOS stored on a Flash Memory chip on the mainboard while in a Windows environment. This utility is currently available for WINXP\ME\2000\98SE. To install the WinFlash utility, run WINFLASH.EXE from the following directory:

UTILITY\WINFLASH 1.51

PC-CILLIN 2002

The PC-CILLIN 2002 software program provides anti-virus protection for your system. This program is available for Windows 2000/ME/98SE/XP and Windows NT. Be sure to check the readme.txt and install the appropriate anti-virus software for your operating system.

We strongly recommend users to install this free anti-virus software to help protect your system against viruses.

MediaRing Talk – Telephony Software

To install the MediaRing Talk voice modem software for the built-in modem, go to the directory \UTILITY\MEDIARING TALK, then run MRTALK-SETUP72.EXE to install the application software.

Super Voice – Fax/Modem Software

To install the Super Voice voice, fax, data communication application for use with the built-in fax/modem, go the directory \UTILITY\SUPER_VOICE, then run PICSHELL.EXE to install the application software.

PageABC

The PageABC application software enables you to create your very own home page. To install the PageABC, go to the directory \UTILITYPageABC, and then run SETUP.EXE to install the application software.

This concludes Chapter 4.