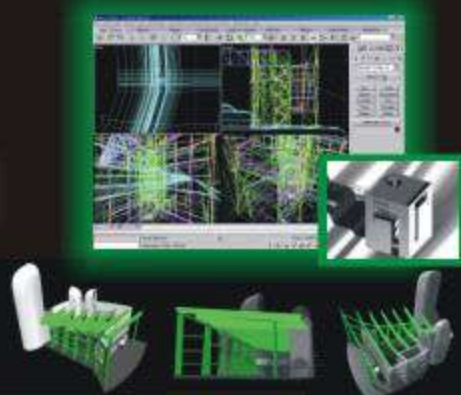
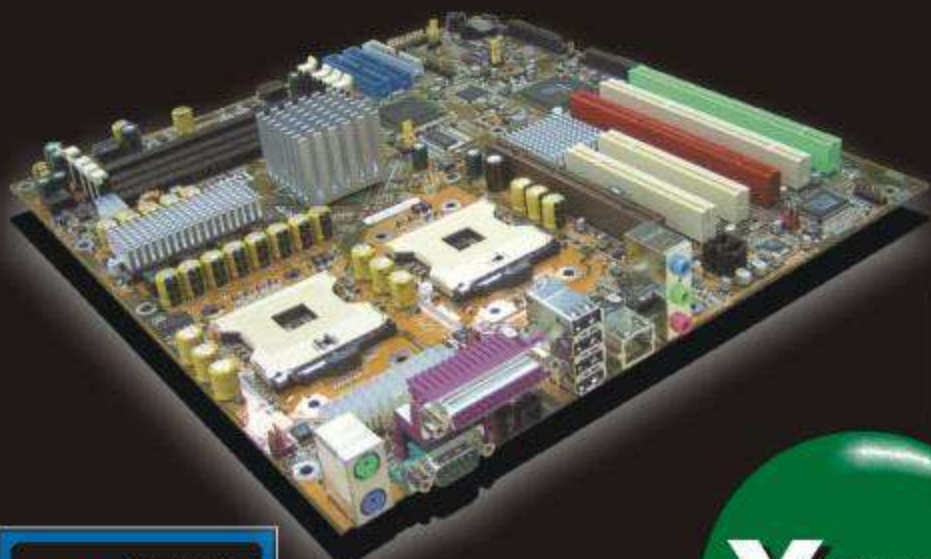


# Dual XEON FSB 533 ? Dual Channel DDR ? PCI-X & Gigabit LAN ?

**IWILL DP533™ - Your Dream Workstation board**



**Yes, Iwill**

## DP533 series



- ✓ Dual Xeon CPU @ FSB 533MHz
- ✓ Intel E7505 chipset
- ✓ Dual channel DDR 333 memory
- ✓ Support PCI-X 133MHz/100MHz
- ✓ Gigabit Ethernet
- ✓ Dual channel Ultra 320 SCSI

Direct from the IWILL DP400 - IWILL introduces the world's best Xeon platform DP533 - Now with Dual channel DDR, FSB 533MHz, and PCI-X Support.



**Headquarters**  
IWILL Corporation  
<http://www.iwill.net>  
tel: 886-2-2299-9897  
fax: 886-2-2299-9838

**Branches**  
IWILL USA Corporation  
<http://www.iwillusa.com>  
tel: 949-753-5488  
fax: 949-753-5499

IWILL Korea Corporation  
<http://www.iwill.co.kr>  
tel: 82-2-712-8866  
fax: 82-2-795-8999

IWILL Beijing Office  
<http://www.iwill.com.cn>  
tel: 8610-62161930/31/32  
fax: 8610-62161929

IWILL Japan Corporation  
<http://www.iwill-japan.co.jp>  
tel: 81-3-5651-7600  
fax: 81-3-5651-7641