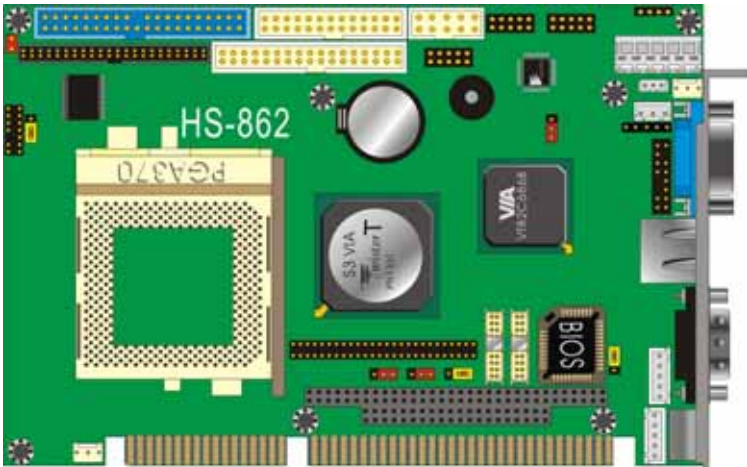


# HS-862 Test Report Edition: 1.0



Chipset	BIOS	CPU
VIA VT8606 VIA VT82C686B	AWARD 6.00PG 02/13/2003-V8606-686B-6A6LLTPHC-00	Socket 370

On Board Compact Flash, VIA Twister LCD LVDS Interfaces  
On Board Single-Chip Realtek RTL8100 10/100M Fast Ethernet  
Controller

# Index

1. Reliability Test .....	4
1.1 CPU test .....	4
1.2 DIMM Module Test .....	6
1.3 DIMM Test Procedure.....	6
2. Software Compatibility Test.....	7
2.1 Operating System .....	7
2.2 Windows Application .....	10
2.3 Game Software .....	15
3. Fundamental Function Test.....	17
3.1 Power Management Test .....	17
3.2 Interface Function Test.....	17
3.3 LED or Control Panel Test.....	18
3.4 System BIOS Function Test .....	18
3.5 Onboard Graphic Driver Test .....	19
4. Simple Performance Test.....	21
4.1 Content Creation Winstone2001 V1.0 .....	21
4.2 Business Winstone2001 V1.0 .....	21
4.3 Content Creation Winstone2000 V1.0 .....	21
4.4 Winstone99V1.3.....	21
4.5 3D Mark99 Max Build.200.....	22
4.6 3D Mark2000 V1.1 .....	22
4.7 3D Mark2001 V1.0 .....	22
4.8 Win Bench 99 V1.1 .....	22
4.9 Content Creation Winstone2001 V1.0 .....	23
5. Hardware Compatibility Test .....	24
5.1 Graphic Card (ISA).....	24
5.2 LAN Card (ISA) .....	25
5.3 Sound Card (ISA)(Disable onboard sound codec).....	25
5.4 Other ISA Device.....	27
5.5 Keyboard .....	27
5.6 Mouse.....	27
5.7 HDD(EIDE).....	28
5.8 CD-ROM(IDE) .....	30
5.9 DVD-ROM .....	31
6. Power Consumption Test .....	32

## Test Information:

**Product Name** : *HS-862*

**BIOS File Name** : *AWARD V6.00PG*

**BIOS Revision** : *1.0*

**Released on** : *04/17/2025*

**PCB Board** : *Rev. A*

**Testing Engineer** : *Jay-Hom Chien*

**Prepared by** : *Anthony , InIn , Rex*

**Checker by** : *Morgan*

# 1. Reliability Test

## 1.1 CPU test

Model	Windows 98SE	Windows NT 4.0	Windows 2000 Professional	Windows 2000 Server
Socket 370 CyrixIII -700AMHz ( 100 X 7 )	PASS	--	PASS	--
Socket 370 C3-800MHz ( 133 X 6 )	PASS	--	PASS	--
Socket 370 C3-1.0AGHz ( 133 X 7.5 )	PASS	PASS	PASS	PASS
Socket 370 Celeron-566MHz ( 66 X 8.5 )	PASS	--	PASS	--
Socket 370 Celeron-850MHz ( 100 X 8.5 )	PASS	--	PASS	--
Socket 370 PentiumIII -667MHz ( 133 X 5 )	PASS	--	PASS	--
Socket 370 PentiumIII -866MHz ( 133 X 6.5 )	PASS	PASS	PASS	PASS
Socket 370 PentiumIII-1.0BGHz ( 133 X 7.5 )	PASS	PASS	PASS	PASS
Socket 370 PentiumIII-1.2GHz ( 133 X 9 )	PASS	PASS	PASS	PASS

Model	Windows ME	Windows NT 4.0	Windows 2000 Professional	Windows 2000 Server
Socket 370 CyrilIII -700AMHz ( 100 X 7 )	PASS	--	PASS	--
Socket 370 C3-800MHz ( 133 X 6 )	PASS	--	PASS	--
Socket 370 C3-1.0AGHz ( 133 X 7.5 )	PASS	PASS	PASS	PASS
Socket 370 Celeron-566MHz ( 66 X 8.5 )	PASS	--	PASS	--
Socket 370 Celeron-850MHz ( 100 X 8.5 )	PASS	--	PASS	--
Socket 370 PentiumIII -667MHz ( 133 X 5 )	PASS	--	PASS	--
Socket 370 PentiumIII -866MHz ( 133 X 6.5 )	PASS	PASS	PASS	PASS
Socket 370 PentiumIII-1.0BGHz ( 133 X 7.5 )	PASS	PASS	PASS	PASS
Socket 370 PentiumIII-1.2GHz ( 133 X 9 )	PASS	PASS	PASS	PASS

## 1.2 DIMM Module Test

No.	Model Size	Model	Chip Model No	Result
1	SO-DIMM 128MB	PC-133	D45128841G5-A75-9JF	PASS
2	SO-DIMM 256MB	PC-133	K4S560832C-TC75	PASS
BIOS : Version 1.0 Load Setup				

## 1.3 DIMM Test Procedure

No	DIM Model	Operating System	Procedure	Result
1	NEC 128MB SDRAM (PC-133)	1. Windows 98 SE 2. Windows XP	1. Install OS 2. RUN C.C.Winstone2001	PASS
2	Samsung 256MB SDRAM (PC-133)	1. Windows 98 SE 2. Windows 2000	1. Install OS 2. RUN C.C.Winstone2001	PASS
BIOS : Version 1.0 Load Setup				

# 2. Software Compatibility Test

## 2.1 Operating System

No	Operating System	Test Key point	Test Environment	Result
1	Windows NT4.0 Workstation (English)	<ol style="list-style-type: none"><li>1. Client Server test</li><li>2. C.C.Winstone2001</li><li>3. WinBench99</li></ol>	CPU : Intel Pentium III Socket370 1.0B GHz DIMM : Samsung 144 pin 256MB SDRAM Display adapter-On board VGA HDD : Maxtor 6L040J2 40GB CD-ROM : Actima 52XS 172G 52X	PASS
2	Windows 98 SE (English)	<ol style="list-style-type: none"><li>1. C.C.Winstone2001</li><li>2. 3DMARK2000</li><li>2. WinBench99</li><li>2. 3DMARK2001</li><li>3. B.Winstome2001</li></ol>	CPU : Intel Pentium III Socket370 1.0B GHz DIMM : Samsung 144 pin 256MB SDRAM Display adapter-On board VGA HDD : Maxtor 6L040J2 40GB CD-ROM : Actima 52XS 172G 52X	PASS
3	Windows 98 SE (Chinese)	<ol style="list-style-type: none"><li>1. C.C.Winstone2001</li><li>2. 3DMARK2000</li><li>3. 3DMARK2001</li></ol>	CPU : Intel Pentium III Socket370 1.0B GHz DIMM : Samsung 144 pin 256MB SDRAM Display adapter-On board VGA HDD : Maxtor 6L040J2 40GB CD-ROM : Actima 52XS 172G 52X	PASS
4	Windows ME (English)	<ol style="list-style-type: none"><li>1 C.C.Winstone2001</li><li>2 B.Winstone2001</li><li>3 3DMARK2000</li><li>4 3DMARK2001</li></ol>	CPU : Intel Pentium III Socket370 1.0B GHz DIMM : Samsung 144 pin 256MB SDRAM Display adapter-On board VGA HDD : Maxtor 6L040J2 40GB CD-ROM : Actima 52XS 172G 52X	PASS

5	Windows 2000 Professional (English)	<ol style="list-style-type: none"> <li>1. Client Server test</li> <li>2. C.C.Winstone2001</li> <li>3. WinBench99</li> <li>4. B.Winstone2001</li> </ol>	CPU : Intel Pentium III Socket370 1.0B GHz DIMM : Samsung 144 pin 256MB SDRAM Display adapter-On board VGA HDD : Maxtor 6L040J2 40GB CD-ROM : Actima 52XS 172G 52X	PASS
No	Operating System	Test Key point	Test Environment	Result
6	Windows 2000 Server (Chinese)	<ol style="list-style-type: none"> <li>1. Client Server test</li> <li>2. C.C.Winstone2001</li> <li>3. WinBench99</li> </ol>	CPU : Intel Pentium III Socket370 1.0B GHz DIMM : Samsung 144 pin 256MB SDRAM Display adapter-On board VGA HDD : Maxtor 6L040J2 40GB CD-ROM : Actima 52XS 172G 52X	PASS
7	Windows XP Professional (English)	<ol style="list-style-type: none"> <li>1. Client Server test</li> <li>2. 3DMARK 2001</li> <li>3. C.C.Winstone2001</li> </ol>	CPU : Intel Pentium III Socket370 1.0B GHz DIMM : Samsung 144 pin 256MB SDRAM Display adapter-On board VGA HDD : Maxtor 6L040J2 40GB CD-ROM : Actima 52XS 172G 52X	PASS
8	Windows XP Home Edition (English)	<ol style="list-style-type: none"> <li>1. Client Server test</li> <li>2. 3DMARK 2001</li> <li>3. C.C.Winstone2001</li> <li>4. B.Winstone2001</li> </ol>	CPU : Intel Pentium III Socket370 1.0B GHz DIMM : Samsung 144 pin 256MB SDRAM Display adapter-On board VGA HDD : Maxtor 6L040J2 40GB CD-ROM : Actima 52XS 172G 52X	PASS



9	Linux Red Hat 7.3 (Chinese)	<ol style="list-style-type: none"> <li>1. Network Test</li> <li>2. Play O.S. Game</li> </ol>	CPU : Intel Pentium III Socket370 1.0B GHz DIMM : Samsung 144 pin 256MB SDRAM Display adapter-On board VGA HDD : Maxtor 6L040J2 40GB CD-ROM : Actima 52XS 172G 52X	PASS
10	Linux Red Hat 8.0 (Chinese)	<ol style="list-style-type: none"> <li>1. Network Test</li> <li>2. Play O.S. Game</li> </ol>	CPU : Intel Pentium III Socket370 1.0B GHz DIMM : Samsung 144 pin 256MB SDRAM Display adapter-On board VGA HDD : Maxtor 6L040J2 40GB CD-ROM : Actima 52XS 172G 52X	PASS
BIOS : Version 1.0 Load Setup				

## 2.2 Windows Application

No	Software	Test Key point	Test Environment	Result
1	Adobe PageMaker 7.0	1. Installation 2. Run Program	CPU : Intel Pentium III Socket370 1.0B GHz DIMM : Samsung 144 pin 256MB SDRAM Display adapter-On board VGA HDD : Maxtor 6L040J2 40GB CD-ROM : Actima 52XS 172G 52X	PASS
2	Adobe Acrobat 5.0	1. Installation 2. Run Program	CPU : Intel Pentium III Socket370 1.0B GHz DIMM : Samsung 144 pin 256MB SDRAM Display adapter-On board VGA HDD : Maxtor 6L040J2 40GB CD-ROM : Actima 52XS 172G 52X	PASS
3	Cadence Design Systems Allegro Free Viewer 14.0	1. Installation 2. Run Program	CPU : Intel Pentium III Socket370 1.0B GHz DIMM : Samsung 144 pin 256MB SDRAM Display adapter-On board VGA HDD : Maxtor 6L040J2 40GB CD-ROM : Actima 52XS 172G 52X	PASS
4	Adobe Photoshop 6.01	1. Installation 2. Run Program	CPU : Intel Pentium III Socket370 1.0B GHz DIMM : Samsung 144 pin 256MB SDRAM Display adapter-On board VGA HDD : Maxtor 6L040J2 40GB CD-ROM : Actima 52XS 172G 52X	PASS

5	WinZip 8.1 SR-1	<ol style="list-style-type: none"> <li>1. Installation</li> <li>2. Run Program</li> </ol>	<p>CPU : Intel Pentium III Socket370 1.0B GHz  DIMM : Samsung 144 pin 256MB SDRAM  Display adapter-On board VGA  HDD : Maxtor 6L040J2 40GB  CD-ROM : Actima 52XS 172G 52X</p>	PASS
No	Software	Test Key point	Test Environment	Result
6	WinRAR 3.10 beta 2	<ol style="list-style-type: none"> <li>1. Installation</li> <li>2. Run Program</li> </ol>	<p>CPU : Intel Pentium III Socket370 1.0B GHz  DIMM : Samsung 144 pin 256MB SDRAM  Display adapter-On board VGA  HDD : Maxtor 6L040J2 40GB  CD-ROM : Actima 52XS 172G 52X</p>	PASS
7	Adobe Acrobat Reader 4.0	<ol style="list-style-type: none"> <li>1. Installation</li> <li>2. Run Program</li> </ol>	<p>CPU : Intel Pentium III Socket370 1.0B GHz  DIMM : Samsung 144 pin 256MB SDRAM  Display adapter-On board VGA  HDD : Maxtor 6L040J2 40GB  CD-ROM : Actima 52XS 172G 52X</p>	PASS
8	Symantec Norton Utilities 2002	<ol style="list-style-type: none"> <li>1. Installation</li> <li>2. Run Program</li> </ol>	<p>CPU : Intel Pentium III Socket370 1.0B GHz  DIMM : Samsung 144 pin 256MB SDRAM  Display adapter-On board VGA  HDD : Maxtor 6L040J2 40GB  CD-ROM : Actima 52XS 172G 52X</p>	PASS

9	Symantec Norton AntiVirus 2003	1. Installation 2. Run Program	CPU : Intel Pentium III Socket370 1.0B GHz DIMM : Samsung 144 pin 256MB SDRAM Display adapter-On board VGA HDD : Maxtor 6L040J2 40GB CD-ROM : Actima 52XS 172G 52X	PASS
10	Symantec Norton GHOST 2002	1. Installation 2. Run Program	CPU : Intel Pentium III Socket370 1.0B GHz DIMM : Samsung 144 pin 256MB SDRAM Display adapter-On board VGA HDD : Maxtor 6L040J2 40GB CD-ROM : Actima 52XS 172G 52X	PASS
11	DR.EYE 2002 V4.7.1100	1. Installation 2. Run Program	CPU : Intel Pentium III Socket370 1.0B GHz DIMM : Samsung 144 pin 256MB SDRAM Display adapter-On board VGA HDD : Maxtor 6L040J2 40GB CD-ROM : Actima 52XS 172G 52X	PASS
No	Software	Test Key point	Test Environment	Result
12	Ahead Nero 5 BURNING ROM 5.5.7.2	1. Installation 2. Run Program	CPU : Intel Pentium III Socket370 1.0B GHz DIMM : Samsung 144 pin 256MB SDRAM Display adapter-On board VGA HDD : Maxtor 6L040J2 40GB CD-ROM : Actima 52XS 172G 52X	PASS

13	BlindWrite Suite 4	<ol style="list-style-type: none"> <li>1. Installation</li> <li>2. Run Program</li> </ol>	<p>CPU : Intel Pentium III Socket370 1.0B GHz  DIMM : Samsung 144 pin 256MB SDRAM  Display adapter-On board VGA  HDD : Maxtor 6L040J2 40GB  CD-ROM : Actima 52XS 172G 52X</p>	PASS
14	A2 Media Player V2.21	<ol style="list-style-type: none"> <li>1. Installation</li> <li>2. Run Program</li> </ol>	<p>CPU : Intel Pentium III Socket370 1.0B GHz  DIMM : Samsung 144 pin 256MB SDRAM  Display adapter-On board VGA  HDD : Maxtor 6L040J2 40GB  CD-ROM : Actima 52XS 172G 52X</p>	PASS
15	Media Jukebox 8.0.393	<ol style="list-style-type: none"> <li>1. Installation</li> <li>2. Run Program</li> </ol>	<p>CPU : Intel Pentium III Socket370 1.0B GHz  DIMM : Samsung 144 pin 256MB SDRAM  Display adapter-On board VGA  HDD : Maxtor 6L040J2 40GB  CD-ROM : Actima 52XS 172G 52X</p>	PASS
16	MusicMatch Jukebox 7.50	<ol style="list-style-type: none"> <li>1. Installation</li> <li>2. Run Program</li> </ol>	<p>CPU : Intel Pentium III Socket370 1.0B GHz  DIMM : Samsung 144 pin 256MB SDRAM  Display adapter-On board VGA  HDD : Maxtor 6L040J2 40GB  CD-ROM : Actima 52XS 172G 52X</p>	PASS

17	PowerQuest PartitionMagic 7.0	1. Installation 2. Run Program	CPU : Intel Pentium III Socket370 1.0B GHz DIMM : Samsung 144 pin 256MB SDRAM Display adapter-On board VGA HDD : Maxtor 6L040J2 40GB CD-ROM : Actima 52XS 172G 52X	PASS
BIOS : Version 1.0 Load Setup				

## 2.3 Game Software

No	Software	Test Key point	Test Environment	Result
1	Daytona USA	1. Installation 2. Play Game	CPU : Intel Pentium III Socket370 1.0B GHz DIMM : Samsung 144 pin 256MB SDRAM Display adapter-On board VGA HDD : Maxtor 6L040J2 40GB CD-ROM : Actima 52XS 172G 52X	PASS
2	Quake III Arena	1. Installation 2. Play game	CPU : Intel Pentium III Socket370 1.0B GHz DIMM : Samsung 144 pin 256MB SDRAM Display adapter-On board VGA HDD : Maxtor 6L040J2 40GB CD-ROM : Actima 52XS 172G 52X	PASS
3	Age of Empires II	1. Installation 2. Play game	CPU : Intel Pentium III Socket370 1.0B GHz DIMM : Samsung 144 pin 256MB SDRAM Display adapter-On board VGA HDD : Maxtor 6L040J2 40GB CD-ROM : Actima 52XS 172G 52X	PASS
4	NBA Live 2001	1. Installation 2. Play game	CPU : Intel Pentium III Socket370 1.0B GHz DIMM : Samsung 144 pin 256MB SDRAM Display adapter-On board VGA HDD : Maxtor 6L040J2 40GB CD-ROM : Actima 52XS 172G 52X	PASS

5	H LF-LIFE	1. Installation 2. Play game	CPU : Intel Pentium III Socket370 1.0B GHz DIMM : Samsung 144 pin 256MB SDRAM Display adapter-On board VGA HDD : Maxtor 6L040J2 40GB CD-ROM : Actima 52XS 172G 52X	<b>PASS</b>
BIOS : Version 1.0 Load Setup				



# 3. Fundamental Function Test

## 3.1 Power Management Test

No	Type	Test Item	Result	Memo
1	Power Management	Mini Saving	PASS	
		Max Saving	PASS	
		User Defined	PASS	
2	PM Timer	HDD Power Down	PASS	
		Suspend Mode	PASS	
3	PWR Switch	Instant-off	PASS	
		Delay 4 sec	PASS	
4	Power On by Ring		PASS	
5	Resume by Alarm		PASS	

## 3.2 Interface Function Test

No	Function on board	Result
1	SO-DIMM (144 pin SDRAM)	PASS
2	USB1 (USB Keyboard) 、 USB2 (USB Mouse)	PASS
3	USB3 (USB Modem) 、 USB4 (USB Mass Storage)	PASS
4	Com 1(Serial Mouse)、 Com 2(Modem)	PASS
5	PRINTER Connect	PASS
6	IDE 1 (Hard Disk)	PASS
7	IDE 2 (CD-ROM)	PASS
8	FDD1	PASS
9	SIR Connect	PASS
10	AUDIO、 CDIN Connect	PASS
11	VGA Connect	PASS
12	CF Connect	PASS
13	LCD、 LVDS	PASS
14	JVOLT1、 JVOLT2	PASS
15	JLAN	PASS
16	JCFSEL	PASS
17	JRTC	PASS
18	JWDT	PASS
19	DOM	PASS

### 3.3 LED or Control Panel Test

No	Panel Connector	Result	Memo
1	Power LED	PASS	
2	Power Button	PASS	
3	Reset	PASS	
4	IDE LED	PASS	
5	Speaker	PASS	
6	LAN LED	PASS	

### 3.4 System BIOS Function Test

No	Function on System BIOS	Result	Memo
1	CPU L1 Cache	PASS	
2	CPU L2 Cache	PASS	
3	Quick Power on Self Test	PASS	
4	On Chip Primary PCI IDE	PASS	
5	On Chip Secondary PCI IDE	PASS	
6	First Boot Device	PASS	
7	USB Controller	PASS	
8	USB Keyboard Support	PASS	
9	Init Display Fist	PASS	
10	ACPI Function	PASS	
11	CPU Warning Temperature	PASS	
12	CPU Frequency Control	PASS	
13	UART2 Mode Select	PASS	
14	Pwron After PWR-Fail	PASS	
15	On board FDC Controller	PASS	
16	On board Serial Port 1	PASS	
17	On board Serial Port 2	PASS	
18	On board Parallel Port	PASS	
19	Current CPU FAN Speed	PASS	
20	Current System FAN Speed	PASS	
21	Set Supervisor Password	PASS	
22	Set User Password	PASS	

### 3.5 Onboard Graphic Driver Test

No	Resolution	Test Key point	Operating System	Test Environment	Result
1	800 x 600 16 bit 60Hz	1.3DMARK2001 2.Winbench99	Windows98 SE	CPU : Intel Pentium III Socket370 1.0B GHz DIMM : Samsung 144 pin 256MB SDRAM Display adapter-On board VGA HDD : Maxtor 6L040J2 40GB CD-ROM : Actima 52XS 172G 52X	PASS
2	1024 x 768 16 bit 60Hz	1.3DMARK2001 2.Winbench99	Windows98 SE	CPU : Intel Pentium III Socket370 1.0B GHz DIMM : Samsung 144 pin 256MB SDRAM Display adapter-On board VGA HDD : Maxtor 6L040J2 40GB CD-ROM : Actima 52XS 172G 52X	PASS
3	800 x 600 32 bit 60Hz	1.3DMARK2001 2.Winbench99	Windows98 SE	CPU : Intel Pentium III Socket370 1.0B GHz DIMM : Samsung 144 pin 256MB SDRAM Display adapter-On board VGA HDD : Maxtor 6L040J2 40GB CD-ROM : Actima 52XS 172G 52X	PASS
4	1024 x 768 32 bit 60Hz	1.3DMARK2001 2.Winbench99	Windows98 SE	CPU : Intel Pentium III Socket370 1.0B GHz DIMM : Samsung 144 pin 256MB SDRAM Display adapter-On board VGA HDD : Maxtor 6L040J2 40GB CD-ROM : Actima 52XS 172G 52X	PASS

5	1280 x 1024 32 bit 60Hz	1.3DMARK2001 2.Winbench99	Windows98 SE	CPU : Intel Pentium III Socket370 1.0B GHz DIMM : Samsung 144 pin 256MB SDRAM Display adapter-On board VGA HDD : Maxtor 6L040J2 40GB CD-ROM : Actima 52XS 172G 52X	PASS
BIOS : Version 1.0 Load Setup					

## 4. Simple Performance Test

System Configuration:

- DIMM: Type\_SAMSUNG 144pin SDRAM Model K4S280832C-TC75 Size: 256\_MB
- Display adapter- On board VGA
- CD-ROM: Actima 52XS 172G 52X
- HDD: Maxtor 6L040J2 AR1.0500 40.0GB
- BIOS Version 1.0 Load Setup Default
- OS : Windows 98 SE (English)

### 4.1 Content Creation Winstone2001 V1.0

(Resolution: 1024X768, 16bit colors60Hz refresh rate with small font)

<i>CPU Type</i>	<i>Intel Pentium III 1.2 GHz</i>	<i>Intel Pentium III 1.0B GHz</i>	<i>Intel Pentium III 866 MHz</i>
<b>Content Creation Winstone2001</b>	49.3	43.8	39.1

Run 5 times select the Best Score

### 4.2 Business Winstone2001 V1.0

(Resolution: 1024X768, 16bit colors60Hz refresh rate with small font)

<i>CPU Type</i>	<i>Intel Pentium III 1.2 GHz</i>	<i>Intel Pentium III 1.0B GHz</i>	<i>Intel Pentium III 866 MHz</i>
<b>Business Winstone2001</b>	47.1	41.5	38

Run 5 times select the Best Score

### 4.3 Content Creation Winstone2000 V1.0

(Resolution: 1024X768, 16bit colors 60Hz refresh rate with small font)

<i>CPU Type</i>	<i>Intel Pentium III 1.2 GHz</i>	<i>Intel Pentium III 1.0B GHz</i>	<i>Intel Pentium III 866 MHz</i>
<b>Content Creation Winstone2000</b>	41.2	36.4	34.1

### 4.4 Winstone99V1.3

(Resolution: 1024X768, 16bit colors 60Hz refresh rate with small font)

<i>CPU Type</i>	<i>Intel Pentium III 1.2 GHz</i>	<i>Intel Pentium III 1.0B GHz</i>	<i>Intel Pentium III 866 MHz</i>
<b>Winstone99</b>	34.1	29	27.9

BIOS select 16MB Frame Buffer

## 4.5 3D Mark99 Max Build.200

(Resolution: 800X600, 16bit colors 60Hz refresh rate with small font)

<b>CPU Type</b>	<b>Intel Pentium III 1.2 GHz</b>	<b>Intel Pentium III 1.0B GHz</b>	<b>Intel Pentium III 866 MHz</b>
<b>3D Marks 99</b>	3303	3439	3467
<b>Synthetic CPU 3D Speed</b>	17237	14020	12628

BIOS select 16MB Frame Buffer

## 4.6 3D Mark2000 V1.1

(Resolution: 1024X768, 16bit colors 60Hz refresh rate with small font)

<b>CPU Type</b>	<b>Intel Pentium III 1.2 GHz</b>	<b>Intel Pentium III 1.0B GHz</b>	<b>Intel Pentium III 866 MHz</b>
<b>On Board VGA</b>	1160	1175	1185

BIOS select 16MB Frame Buffer

## 4.7 3D Mark2001 V1.0

(Resolution: 1024X768, 16bit colors 60Hz refresh rate with small font)

<b>CPU Type</b>	<b>Intel Pentium III 1.2 GHz</b>	<b>Intel Pentium III 1.0B GHz</b>	<b>Intel Pentium III 866 MHz</b>
<b>On Board VGA</b>	428	429	425

BIOS select 16MB Frame Buffer

## 4.8 Win Bench 99 V1.1

(Resolution: 1024x768, 16bit colors 60Hz refresh rate with small font)

<b>CPU Type</b>	<b>Intel Pentium III 1.2 GHz</b>	<b>Intel Pentium III 1.0B GHz</b>	<b>Intel Pentium III 866 MHz</b>
<b>CPUMark99</b>	96.9	82.7	74.9
<b>FPU WinMark</b>	6580	5330	4620
<b>Business Disk WinMark99</b>	11000	10100	9880
<b>High-End Disk WinMark99</b>	23300	23200	22200
<b>Business Graphics WinMark99</b>	447	378	350
<b>High-EndGraphicsWinMark99</b>	1200	995	888

System Configuration:

- DIMM: Type,SAMSUNG 144pin SDRAM Model K4S280832C-TC75 Size: 256\_MB
- Display adapter- On board VGA
- CD-ROM: Actima 52XS 172G 52X
- HDD: Maxtor 6L040J2 AR1.0500 40.0GB
- BIOS Version 1.0 Load Setup Default
- OS : Windows XP Home Edition (English)

## 4.9 Content Creation Winstone2001 V1.0

(Resolution: 1024X768, 16bit colors 60Hz refresh rate with small font)

<i>CPU Type</i>	<i>Intel Pentium III 1.2 GHz</i>	<i>Intel Pentium III 1.0B GHz</i>	<i>Intel Pentium III 866 MHz</i>
<b>Content Creation Winstone2001</b>	63.6	56.4	50.6

# 5. Hardware Compatibility Test

## 5.1 Graphic Card (ISA)

No	Graphic Card	Test Key point	Operating System	Test Environment	Result
1	Tseng Labs ET4000 (ISA)	1. Install O.S 2. WinBench 99	Windows 98 SE	CPU : Intel Pentium III Socket370 1.0B GHz DIMM : Samsung 144 pin 256MB SDRAM HDD : Maxtor 6L040J2 40GB CD-ROM : Actima 52XS 172G 52X	PASS
2	Cirrus Logic GD5429 (ISA)	1. Install O.S 2. WinBench 99	Windows 98 SE	CPU : Intel Pentium III Socket370 1.0B GHz DIMM : Samsung 144 pin 256MB SDRAM HDD : Maxtor 6L040J2 40GB CD-ROM : Actima 52XS 172G 52X	PASS
BIOS : Version 1.0 Load Setup					



## 5.2 LAN Card (ISA)

No	LAN Card	Test Key point	Operating System	Test Environment	Result
1	Realtek RTL8019 (ISA)	1. Client/server test	1. Windows98 2. Windows Nt4.0	CPU : Intel Pentium III Socket370 1.0B GHz DIMM : Samsung 144 pin 256MB SDRAM Display adapter-On board VGA HDD : Maxtor 6L040J2 40GB CD-ROM : Actima 52XS 172G 52X	PASS
BIOS : Version 1.0 Load Setup					

## 5.3 Sound Card (ISA)(Disable onboard sound codec)

No	Sound card	Test Key point	Operating System	Test Environment	Result
1	ESS ES1869 (ISA)	Play media function: MIDI,WAV,CD-A UDIO,MPEG,etc ...	1 Windows 98 SE 2 Windows NT4.0	CPU : Intel Pentium III Socket370 1.0B GHz DIMM : Samsung 144 pin 256MB SDRAM Display adapter-On board VGA HDD : Maxtor 6L040J2 40GB CD-ROM : Actima 52XS 172G 52X	PASS
2	ESS ES1868F (ISA)	Play media function: MIDI,WAV,CD-A UDIO,MPEG,etc ...	1 Windows 98 SE 2 Windows NT4.0	CPU : Intel Pentium III Socket370 1.0B GHz DIMM : Samsung 144 pin 256MB SDRAM Display adapter-On board VGA HDD : Maxtor 6L040J2 40GB CD-ROM : Actima 52XS 172G 52X	PASS

3	OPTi 82C931 (ISA)	Play media function: MIDI,WAV,CD-A UDIO,MPEG,etc ...	1 Windows 98 SE 2 Windows NT4.0	CPU : Intel Pentium III Socket370 1.0B GHz DIMM : Samsung 144 pin 256MB SDRAM Display adapter-On board VGA HDD : Maxtor 6L040J2 40GB CD-ROM : Actima 52XS 172G 52X	PASS
4	Avance Logic ALS120 (ISA)	Play media function: MIDI,WAV,CD-A UDIO, MPEG,etc...	1 Windows 98 SE 2 Windows NT4.0	CPU : Intel Pentium III Socket370 1.0B GHz DIMM : Samsung 144 pin 256MB SDRAM Display adapter-On board VGA HDD : Maxtor 6L040J2 40GB CD-ROM : Actima 52XS 172G 52X	PASS
5	Rock Well RWA010 (ISA)	Play media function: MIDI,WAV,CD-A UDIO, MPEG,etc...	1 Windows 98 SE 2 Windows NT4.0	CPU : Intel Pentium III Socket370 1.0B GHz DIMM : Samsung 144 pin 256MB SDRAM Display adapter-On board VGA HDD : Maxtor 6L040J2 40GB CD-ROM : Actima 52XS 172G 52X	PASS
BIOS : Version 1.0 Load Setup					

## 5.4 Other ISA Device

No	Device	Test Key point	Operating System	Test Environment	Result
1	PCTel PCT388P (ISA)	Install O.S. test Dial-UP Networking	Windows98 SE	CPU : Intel Pentium III Socket370 1.0B GHz DIMM : Samsung 144 pin 256MB SDRAM Display adapter-On board VGA HDD : Maxtor 6L040J2 40GB CD-ROM : Actima 52XS 172G 52X	PASS

## 5.5 Keyboard

No	Key Board	Brand/Type	Result
1	104-key keyboard-Philips KWD-601	Philips	PASS
2	104-key keyboard-BTC-8110M	BTC	PASS
3	104-key keyboard-RT6855TW	NMB	PASS
4	USB 104-key keyboard	Forward	PASS
5	USB 104-key keyboard	Chicory	PASS
6	101-key keyboard CHAMPKING	Champ king	PASS
7	SCORPIUS 98A-DCS	DCS	PASS

## 5.6 Mouse

No	Mouse	Brand/Type	Result
1	PS/2 mouse –M-S34	Philips	PASS
2	Serial mouse	Microsoft	PASS
3	PS/2 mouse	Microsoft	PASS
4	USB mouse-DCS	DCS	PASS
5	PS/2 mouse-LYNX 3D MOUSE	DCS	PASS

## 5.7 HDD(EIDE)

No	IDE HDD	Test Key point	Operating System	Test Environment	Result
1	Maxtor 6L040J2 AR1.0500 40.0GB	1 Hard disk delete 2 Install O.S	Windows98 SE Windows XP	CPU : Intel Celeron Socket370 850Hz DIMM : Samsung 144 pin 256MB SDRAM Display adapter-On board VGA CD-ROM : Sony CDU4811 PY09	PASS
2	Western Digital WDC WD400EB-00CPF0 06.04G06 40.0GB	1 Hard disk delete 2 Install O.S	Windows2000	CPU : Intel Celeron Socket370 850Hz DIMM : Samsung 144 pin 256MB SDRAM Display adapter-On board VGA CD-ROM : Sony CDU4811 PY09	PASS
3	Seagate ST340016A 3.19 40GB	1 Hard disk delete 2 Install O.S	Windows98 SE	CPU : Intel Celeron Socket370 850Hz DIMM : Samsung 144 pin 256MB SDRAM Display adapter-On board VGA CD-ROM : Sony CDU4811 PY09	PASS
4	Maxtor 6E040L0 NAR61590 40.0GB	1 Hard disk delete 2 Install O.S	Windows NT4.0	CPU : Intel Celeron Socket370 850Hz DIMM : Samsung 144 pin 256MB SDRAM Display adapter-On board VGA CD-ROM : Sony CDU4811 PY09	PASS

5	Seagate ST330620A 30GB	1 Hard disk delete 2 Install O.S	Windows XP	CPU : Intel Celeron Socket370 850Hz DIMM : Samsung 144 pin 256MB SDRAM Display adapter-On board VGA CD-ROM : Sony CDU4811 PY09	<b>PASS</b>
BIOS : Version 1.0 Load Setup					

## 5.8 CD-ROM(IDE)

No	CD-ROM Device	Test Key point	Operating System	Test Environment	Result
1	Actima 52XS 172G 52X	1 Install O.S 2 Media function test audio CD,VCD,etc	Windows98 SE Windows 2000	CPU : Intel Celeron Socket370 850Hz DIMM : Samsung 144 pin 256MB SDRAM Display adapter-On board VGA HDD : Maxtor 6L040J2 40GB CD-ROM : Actima 52XS 172G 52X	PASS
2	SONY CDU4811 PY09 48X	1 Install O.S 2 Media function test audio CD,VCD,etc	Windows98 SE Windows 2000	CPU : Intel Celeron Socket370 850Hz DIMM : Samsung 144 pin 256MB SDRAM Display adapter-On board VGA HDD : Maxtor 6L040J2 40GB CD-ROM : Sony CDU4811 PY09 48X	PASS
3	TEAC CD 532E 1.0A 32X	1 Install O.S 2 Media function test audio CD,VCD,etc	Windows98 SE Windows 2000	CPU : Intel Celeron Socket370 850Hz DIMM : Samsung 144 pin 256MB SDRAM Display adapter-On board VGA HDD : Maxtor 6L040J2 40GB CD-ROM : TEAC CD 532E 1.0A 32X	PASS
4	ASUS CD-S520/A	1 Install O.S 2 Media function test audio CD,VCD,etc	Windows98 SE Windows 2000	CPU : Intel Celeron Socket370 850Hz DIMM : Samsung 144 pin 256MB SDRAM Display adapter-On board VGA HDD : Maxtor 6L040J2 40GB CD-ROM : ASUS CD-S520/A 52X	PASS
BIOS : Version 1.0 Load Setup					

## 5.9 DVD-ROM

No	DVD-ROM Device	Test Key point	Operating System	Test Environment	Result
1	Pioneer A open DVD1648	1 Install O.S 2 Play DVD movie 3 Play VCD movie 4 Play audio CD	Windows98 SE	CPU : Intel Celeron Socket370 850Hz DIMM : Samsung 144 pin 256MB SDRAM Display adapter-On board VGA HDD : Maxtor 6L040J2 40GB	PASS
2	Pioneer DVD-020	1 Install O.S 2 Play DVD movie 3 Play VCD movie 4 Play audio CD	Windows98 SE	CPU : Intel Celeron Socket370 850Hz DIMM : Samsung 144 pin 256MB SDRAM Display adapter-On board VGA HDD : Maxtor 6L040J2 40GB	PASS
3	HITACHI GD-2500	1 Install O.S 2 Play DVD movie 3 Play VCD movie 4 Play audio CD	Windows98 SE	CPU : Intel Celeron Socket370 850Hz DIMM : Samsung 144 pin 256MB SDRAM Display adapter-On board VGA HDD : Maxtor 6L040J2 40GB	PASS
BIOS : Version 1.0 Load Setup					

## 6. Power Consumption Test

### System Configuration

- DIMM1: Type\_SAMSUNG 144pin SDRAM Model K4S280832C-TC75 Size: 256\_MB

<i>CPU Type</i>	<i>12 V</i>	<i>-12 V</i>	<i>5 V</i>	<i>-5 V</i>
PentiumIII-1.2GHz ( 133 X 9 ) 0.13 micron	0.3 A	< 0.1 A	4.3 A	< 0.1 A
PentiumIII-1.0BGHz ( 133 X 7.5 ) 0.18 micron	0.2 A	< 0.1 A	5.8 A	< 0.1 A
VIA C3-1.0AGHz ( 133 X 7.5 ) 0.13 micron	0.3 A	< 0.1 A	4.1 A	< 0.1 A
VIA CyrixIII-700AMHz (100 X 7 ) 0.18 micron	0.2 A	< 0.1 A	3.6 A	< 0.1 A