

HP Vectra XU 6/xxx PC

Models and Accessories

Product Number	Hard Drive	Disk Controller	Video Controller	Std. RAM	Multi-media	LAN	OS ¹
Vectra XU 6/xxx PC							
HP Vectra XU 6/150 PC (CPL: 12/95 ▶)							
D3528A	None	Integrated SCSI and IDE controller	Matrox MGA Millennium board, (2 MB, upgradeable to 4 MB or 8 MB)	16 MB	4X SCSI CD-ROM (D2992B) and Sound Blaster16	10 / 100 VG	None
D3529N	1 GB (D2920A)						NT 3.51
D3530N	2 GB (D2926A)						WS
HP Vectra XU 6/150 PC (CPL: 06/96 ▶)							
D3528B	None	Integrated SCSI and IDE controller	Matrox MGA Millennium board, (2 MB, upgradeable to 4 MB or 8 MB)	32 MB	4X SCSI CD-ROM (D2992B) and Sound Blaster16	10 / 100 VG	None
D3529B	1 GB (D2920A)						NT 3.51
D3530B	2 GB (D2926A)						WS
HP Vectra XU 6/180 PC (CPL: 04/96 ▶)							
D4340A	None	Integrated SCSI and IDE controller	Matrox MGA Millennium board, (2 MB, upgradeable to 4 MB or 8 MB)	16 MB	4X SCSI CD-ROM (D2992B) and Sound Blaster16	10 / 100 VG	None
D4340B²				32 MB			
D4341N	1 GB (D2920A)			NT 3.51			
D4342N	2 GB (D2926A)			WS			

1. Windows NT 3.51 WS is supplied on CD-ROM (not preloaded).
2. D4340B has CPL: 05/96



HP Vectra XU 6/xxx PC Series

Product Number	Hard Drive	Disk Controller	Video Controller	Std. RAM	Multi-media	LAN	OS ¹
HP Vectra XU 6/180 PC (CPL: 11/96 ▶)							
D4342B	2 GB (D2926A)	Integrated SCSI and IDE controller	Matrox MGA Millennium board, (2 MB, upgradeable to 4 MB or 8 MB)	32 MB	8X IDE CD-ROM (D4381A) and Sound Blaster16	10 / 100 VG	NT 3.51 WS
D4343A	None					None	
D4344N	2 GB (D2926A)					10 / 100 BT	
HP Vectra XU 6/200 PC (CPL: 04/96 ▶)							
D4345A	None	Integrated SCSI and IDE controller	Matrox MGA Millennium board, (2 MB, upgradeable to 4 MB or 8 MB)	16 MB	4X SCSI CD-ROM (D2992B) and Sound Blaster16	10 / 100 VG	None
D4345B²				32 MB			
D4346N	1 GB (D2920A)			NT 3.51 WS			
D4347N	2 GB (D2926A)						
HP Vectra XU 6/200 PC (CPL: 11/96 ▶)							
D4347B	2 GB (D2926A)	Integrated SCSI and IDE controller	Matrox MGA Millennium board, (2 MB, upgradeable to 4 MB or 8 MB)	32 MB	8X IDE CD-ROM (D4381A) and Sound Blaster16	10 / 100 VG	NT 3.51 WS
D4348A	None					None	
D4349N	2 GB (D2926A)					10 / 100 BT	NT 3.51 WS
D4350N	4 GB (D2797A)						
D4352N X2 Proc			64 MB				
D4353N	2 GB (D2926A)		32 MB			NT 4.0 WS	
D4354N	4 GB (D2797A)						

- Windows NT 3.51 WS is supplied on CD-ROM (not preloaded); Windows NT 4.0 WS is preloaded.
- D4345B has CPL: 05/96

Note

The IntelTM Pentium Pro processor has 256 KB of integrated level-two cache memory.

All models are supplied with a 1.44 MB (D2035B) Flexible Disk Drive.



Supported Accessories

16-MB (2 × 8-MB), ECC 60-ns main memory upgrade kit (72-bit), Interleave 8	D3556A
32-MB (2 × 16-MB), ECC 60-ns main memory upgrade kit (72-bit), Interleave 8	D3555B
32-MB (2 × 16-MB), ECC 60-ns main memory upgrade kit (72-bit), Interleave 16	D3555A
64-MB (2 × 32-MB), ECC 60-ns main memory upgrade kit (72-bit), Interleave 16	D3554B
128-MB (2 × 64-MB), ECC 60-ns main memory upgrade kit (72-bit), Interleave 64	D3540A
Note: To order the appropriate main memory upgrade kit, check the PC memory configuration using the “HP Vectra XU 6/xxx & VT 6/xxx Memory Configuration Utility”. This utility will indicate the supported accessories.	
2-MB video memory (WRAM) upgrade kit	D3557A
<i>User’s Guide</i> Manual Kit	D3538B

Dual Processor Kits¹

150 MHz models	D3559A
180 MHz and 200 MHz models	D4351A

Input Devices

HP mouse	C3751B
HP keyboard for Windows® 95	C4725A

Video Displays

All current HP Displays (see the *HP Vectra Accessory Service Handbook*)

Mass Storage

1-GB Fast SCSI-2 hard disk	D2920A
2-GB Fast SCSI-2 hard disk	D2926A
4-GB Fast SCSI-2 hard disk	D2797A
540 MB IDE hard disk	D2918A
1-GB IDE hard disk	D2919A
Flexible disk 3.5-inch 1.44-MB (1-inch high)	D2035B
SCSI 4× CD-ROM drive	D2992B
IDE 8× CD-ROM drive	D4381A
Rail kit (3.5-inch)	D3566A
Rail kit (5.25-inch)	D2880A

1. Dual Processor Kits include: processor, voltage regulator module and heatsink.

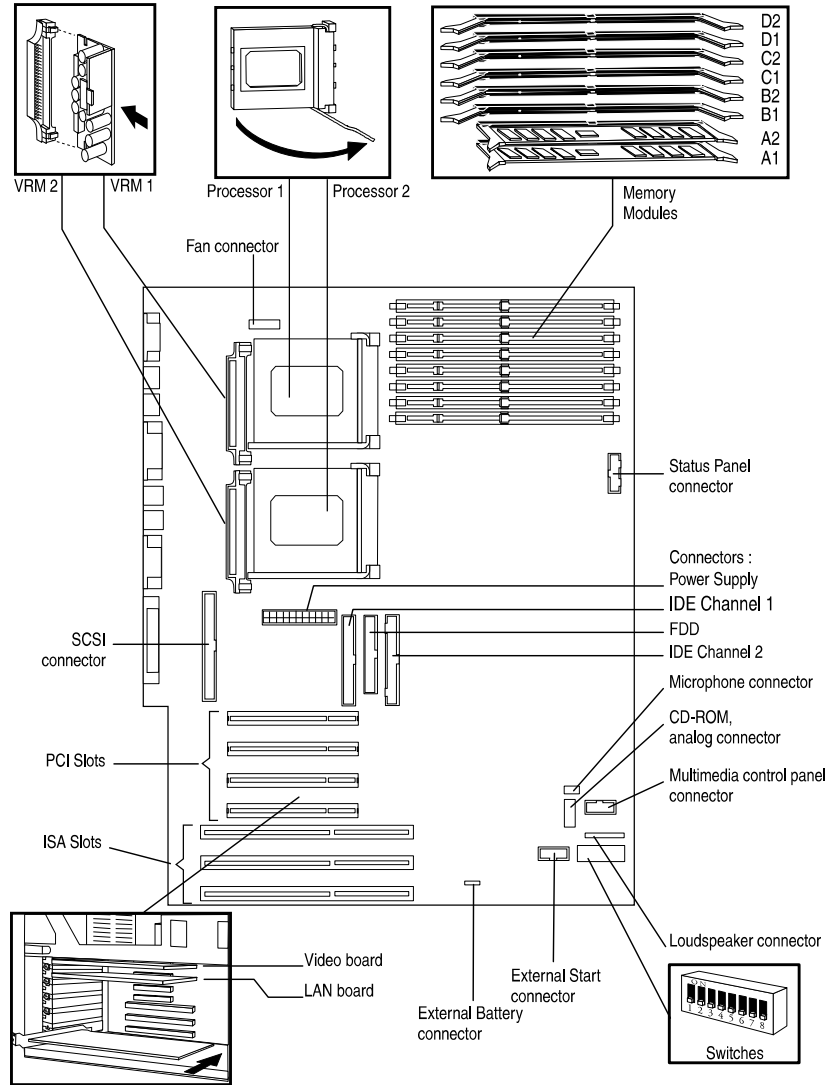
Mini-Tower Vectras



1

HP Vectra XU 6/xxx PC Series

System Board, BIOS, and Memory



System Board Switches

Switch		Function	Default
1	OFF	Retain configuration in EEPROM, normal position	OFF
	ON	Clears EEPROM	
2	OFF	Enables User and Administrator passwords	OFF
	ON	Clears User and Administrator passwords	
3	OFF	Disables secure switch (off position)	OFF
	ON	Enables secure switch (on position) - prevents modification of SETUP values and flashing of BIOS	
4		Local bus frequency, see following table	ON
5			OFF
6		Processor : local bus frequency ratio, see following table	ON
7			OFF
8			OFF

Switch		Local Bus Frequency	Switch			Frequency Ratio Processor : Local Bus	Processor Frequency
4	5		6	7	8		
ON	OFF	60 MHz	ON	OFF	OFF	2.5 : 1	150 MHz
OFF	OFF	66 MHz	ON	OFF	OFF	2.5 : 1	166 MHz
ON	OFF	60 MHz	OFF	ON	OFF	3 : 1	180 MHz
OFF	OFF	66 MHz	OFF	ON	OFF	3 : 1	200 MHz

BIOS History

The latest BIOS, the flasher utility program, and the BIOS history can each be obtained from the HP Electronic Services.



1

HP Vectra XU 6/xxx PC Series

Main Memory

The PC has four banks on the system board for installing main memory; banks A, B, C and D. Each bank consists of two sockets. The PC is supplied with 16, 32 or 64 MB of main memory (two memory modules installed in one bank). The PC uses 60-ns ECC DRAM.

Memory modules must be installed in identical pairs, so that each bank with memory installed contains two memory modules of the same size and type.

The PC is supplied with one bank of memory modules. This can be a pair of modules of type “interleave 8” or a pair of type “interleave 16”. These can be replaced or extended with memory modules of the same type.

Main memory on an “interleave 8” type of PC can be extended to a maximum of 128 MB by replacing the 16 MB base memory with four D3555B kits (32 MB each kit). Main memory can be extended to a maximum of 112 MB without replacing the base memory.

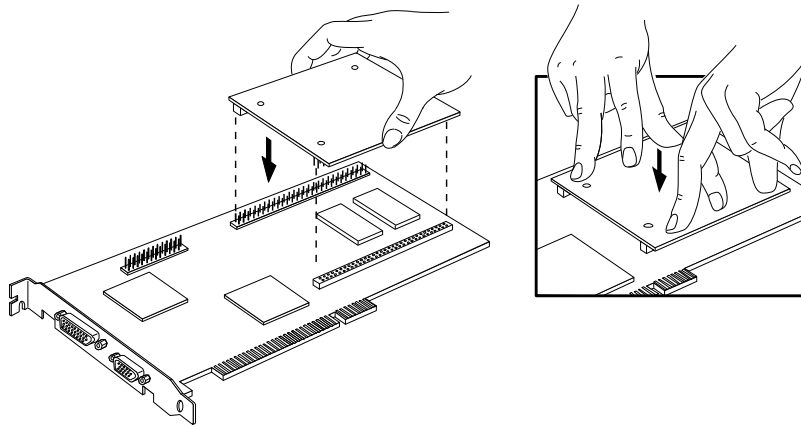
Main memory on an “interleave 16” type of PC can be extended to a maximum of 512 MB by replacing the 32 MB base memory with four D3540A kits (128 MB, “interleave 64” each kit). Main memory can be extended to a maximum of 416 MB without replacing the base memory.

To order the appropriate main memory upgrade kit, check the PC memory configuration using the “HP Vectra XU 6/xxx & VT 6/xxx Memory Configuration Utility”. This utility will indicate the supported accessories.



Video Memory

The PC is supplied with 2 MB of video memory for 1600×1200 in 256 colors. An additional 2 MB of video memory can be installed by adding a D3557A module in the video memory socket; this will make a total of 4 MB for 1600×1200 in 64 K colors. Alternatively, an additional 6 MB of video memory can be installed by adding an MGA-MIL/MOD6 module in the video memory socket (ordered from Matrox); this will make a total of 8 MB for 1600×1200 in 16.7 M colors.



Matrox Video Board Switches

Switch	Function
1	<ul style="list-style-type: none"> • OFF to prevent Video BIOS upgrades - DEFAULT • ON to allow Video BIOS upgrades
2	<ul style="list-style-type: none"> • OFF for single-screen operation - DEFAULT • ON for dual-screen operation (with second VGA controller)

Installing a Dual Processor

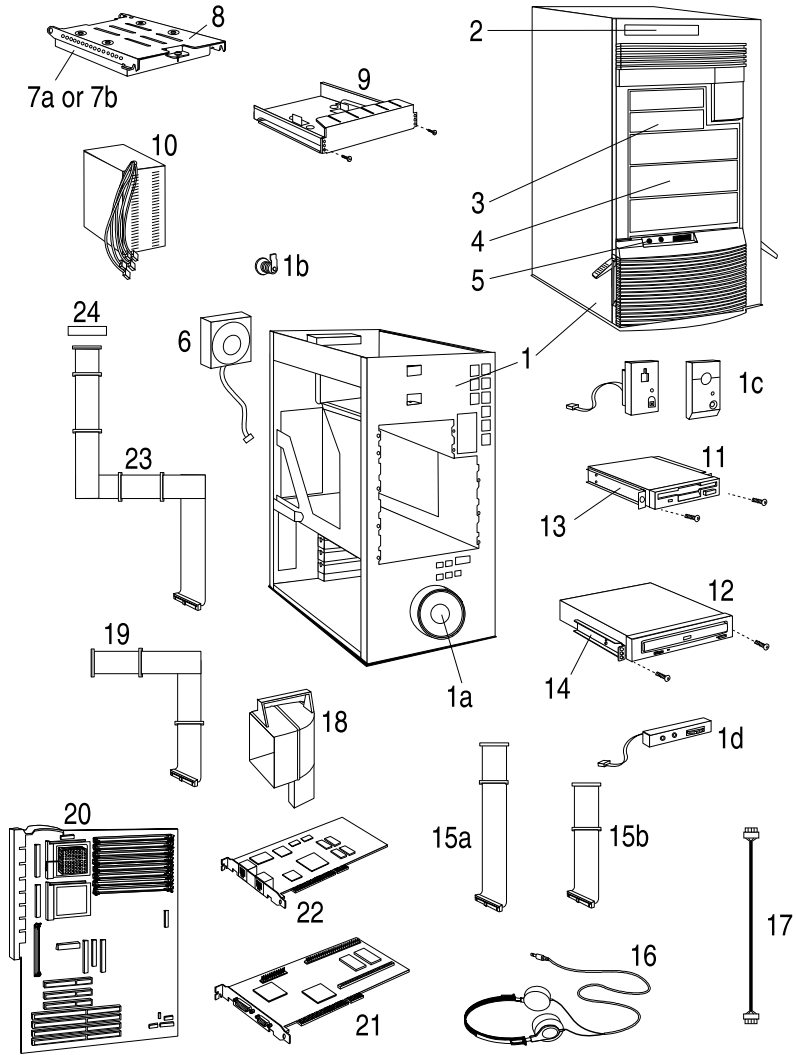
No jumper changes are involved when installing a second Pentium Pro (P6 or P6S) processor.



1

HP Vectra XU 6/xxx PC Series

Part Numbers



1-8 HP Vectra XU 6/xxx PC

Mini-Tower Vectras



HP Vectra XU 6/xxx PC Series

1

Parts List for HP Vectra XU 6/xxx PC

Item	Description	Repl. Part Number	Exchange Part Number
1	Box assembly: a Speaker assembly b Cover lock assembly c Status panel kit d Multimedia control panel e Bumper foot	5063-9010 5063-4559 5062-5590 5063-9008 5063-9003 02225-00010	—
2	HP Vectra XU 6/150 logo HP Vectra XU 6/180 logo HP Vectra XU 6/200 logo	5042-1447 5042-1805 5042-1806	— — —
3	Filler panel 3.5 inch	5042-1405	—
4	Filler panel 5.25 inch	5042-1178	—
5	Multimedia bezel	5042-1421	—
6	Fan	5063-9004	—
7	Hard disk drive (standard) ¹ : 1-GB Fast SCSI-2 2-GB Fast SCSI-2 4-GB Fast SCSI-2	D2920-63001 D2926-63001 D2797-63001	D2920-69001 D2926-69001 D2797-69001
8	HDD 3.5-inch bracket	5001-6864	—
9	HDD tray	5002-1935	—
10	Power supply assembly	5063-8799	—
11	Flexible disk drive	D2035-63121	—
12	CD-ROM drive (standard) : 4X SCSI 8X IDE	D2992-63032 D4381-63001	— D4381-69001
13	Rail kit (3.5-inch)	D3566A	—
14	Rail kit (5.25-inch)	D2880A	—
15	Ultra Fast IDE cable (for HDD) Ultra Fast IDE cable (for CD-ROM)	5064-0284 5182-3544	—
16	Headphones	5063-8800	—
17	SCSI CD-ROM to audio cable IDE CD-ROM to audio cable	5182-5412 5182-1857	—
18	Airflow guide	5063-9005	—
19	Flexible disk cable	5182-3567	—
20	System board	See PC's system board parts list	
21	Matrox MGA Millennium board	5063-8798	—
22	HP 10/100 VG LAN board (J2585B ²) HP 10/100 BT LAN board	J2585-61011 J3171-61001	—
23	SCSI cable	5182-3540	—
24	SCSI terminator	0960-0888	—

- For optional disk drive information, see the *Accessory Service Handbook*.
- If a J2585A is being replaced (in all models whose CPL is before 11/96) by a J2585B, new drivers must be installed.

Mini-Tower Vectras



HP Vectra XU 6/xxx PC 1-9

HP Vectra XU 6/xxx PC Series

System Board Parts List for HP Vectra XU 6/xxx PC

Description	Repl. Part Number	Exchange Part Number
System board:		
Vectra XU 6/150 models D3528A, D3529N, D3530N with serial number less than SG610xxxxx	D3528-63002	D3528-69002
Vectra XU 6/150 models D3528A, D3529N, D3530N with serial number \geq SG10xxxxx	D4340-63001	D4340-69001
D3528B, D3529B, D3530B (all serial numbers)		
Vectra XU 6/180 and 6/200, CPL before 11/96: models D4340A/B, D4341N, D4342N, D4345A/B, D4346N, D4347N)	D4340-63001	D4340-69001
Vectra XU 6/180 and 6/200, CPL at 11/96: models D4342B, D4343A, D4344N, D4347B, D4348A, D4349N, D4350N, D4352N)	D4340-63002	D4340-69002
Processors:		
Intel Pentium Pro (P6) 150 MHz	5063-8791	—
Intel Pentium Pro (P6) 180 MHz	5063-8755	—
Intel Pentium Pro (P6) 200 MHz	5063-8756	—
Heat-sink and clip	5063-8793	—
Voltage regulator module (VRM)	5063-8794	—
Main memory modules:		
1 \times 8-MB, 60-ns ECC RAM, interleave 8	5063-8795	—
1 \times 16-MB, 60-ns ECC RAM, interleave 8	1818-6660	—
1 \times 16-MB, 60-ns ECC RAM, interleave 16	5063-8796	—
1 \times 32-MB, 60-ns ECC RAM, interleave 16	1818-6661	—
Video memory module:		
2 MB video memory module	D3557-63001	—

Support Manuals for HP Vectra XU 6/xxx PC

<i>Familiarization Guide</i>	D3538-90901
<i>Technical Reference Manual: hardware and BIOS</i>	D3538-90911 ¹

1. Electronic file only.

Software for HP Vectra XU 6/xxx PC

XU/VT 6/xx Installation Boot Diskette	5064-0242
XU/VT Drivers and documentation CD-ROM	5011-3805
XU 6/xx & VT 6/xx Memory Configuration Utility	Available via HP Electronic Services

