



Osta Tugi



HP and Compaq Desktop PCs - Motherboard Specifications, A7N8X-LA (Escape)

[Motherboard specifications table](#)

[Motherboard layout and photos](#)

[Clearing the CMOS settings](#)

Motherboard specifications table

Part/Feature	Specification/Support
Motherboard Description	<ul style="list-style-type: none">• Manufacturer's name - A7N8X-LA• HP/Compaq name - Escape
Motherboard Supplier	ASUS
System BIOS Supplier	Award
Form Factor	Micro ATX



Part/Feature	Specification/Support
Processor Brand	Athlon XP
Processor Socket Type	Socket A
Processor Family	AMD Duron, Athlon, and Athlon XP
Maximum approved processor	Athlon XP 3000+ Processor (2.16GHz, 333MHz)
Proc. Front Side Bus Freq.	266/333 MHz
Chipset Name	NVIDIA nForce2 SPP
Chipset "North Bridge"	NVIDIA IGP-64
Chipset "South Bridge"	NVIDIA MCP2-T
Memory Type	DDR
Memory Speed	PC 2700
Memory Sockets	2 DDR DIMM (184-pin)





Part/Feature	Specification/Support
Ethernet Configuration	integrated, Down
IE 1394 Front/Back Options	1F + 1B
IDE UDMA Modes	1F + 1BUltraDMA 133/100/66/33
Expansion Slots (AGP/PCI/Exten)	1 AGP, 3 PCI
USB Ports	6 (2.0)
USB Front/Back Options	2F+4B
Serial, Parallel, Floppy, PS2 Kbd & Mouse	1S,1P,1F,PS2 K+M
Serial Port Front Chassis Option	NO
Available Mfg Options (Legend Below)	LAE

LEGENDS

A	Audio down on motherboard
---	---------------------------



C	External L2 cache on motherboard
E	1394 on motherboard
G	Graphics down (on motherboard or in chipset)
L	LAN on motherboard (ethernet)P - PCMCIA slot
LI	Line In
LO	Line out
M	Microphone
M/G	Midi/Game
S	S3 power management support
S/O	Speaker
T	TV-out on motherboard



U	Graphics card (up, not on motherboard)
W	Microsoft Windows XP hardware compliant

Motherboard layout and photos

Figure 1: Photo of motherboard

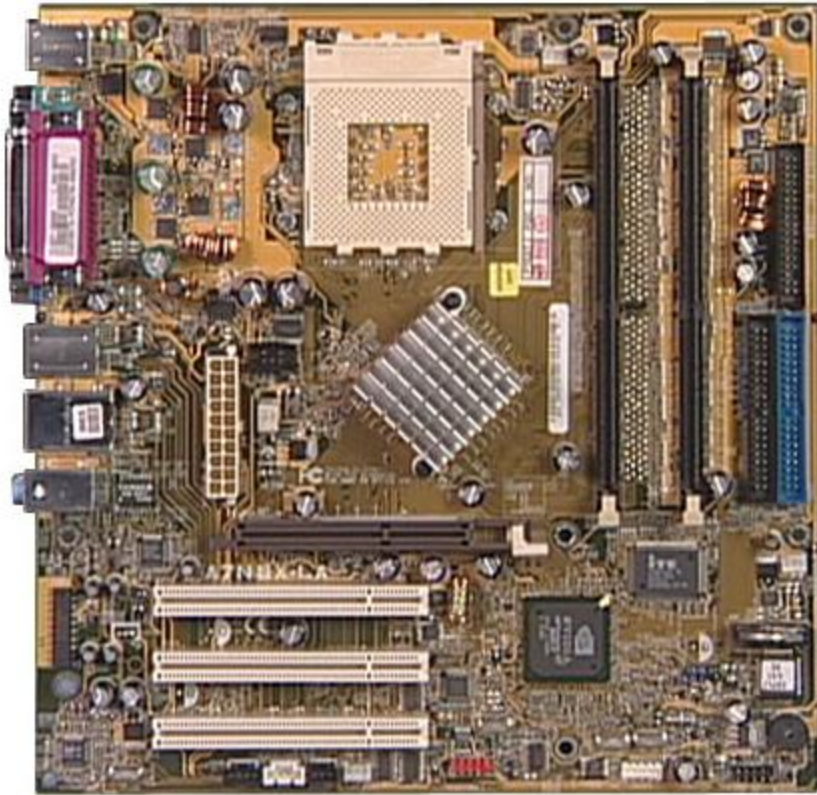


Figure 2: Layout of motherboard



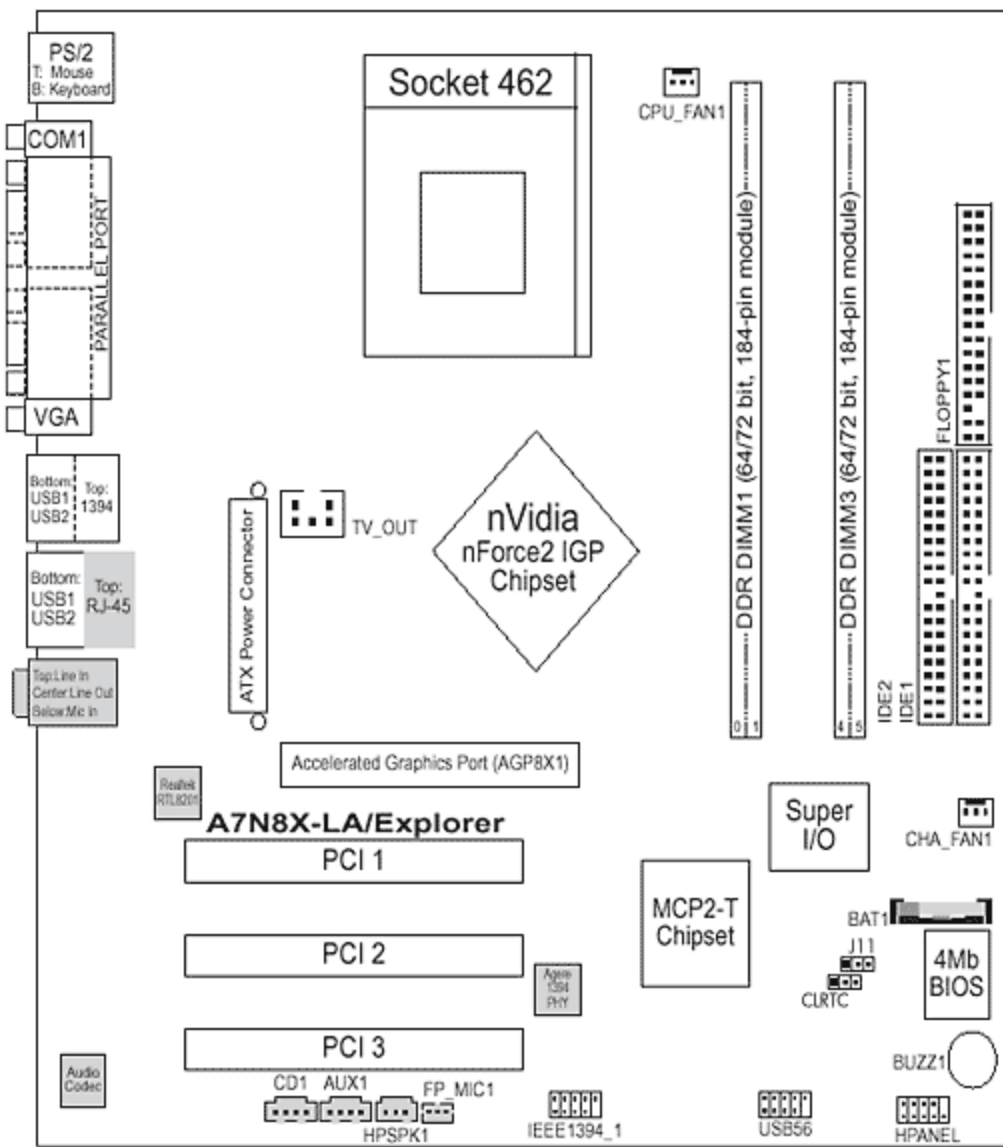
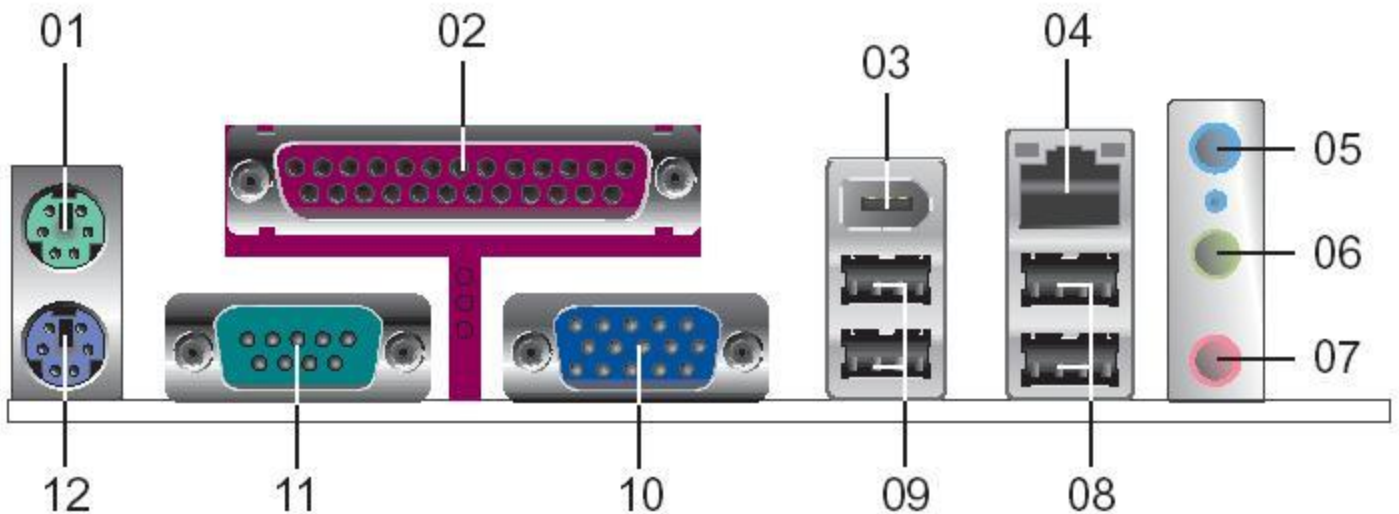


Figure 3: View of back panel connectors



1. PS/2 mouse
2. Parallel port
3. IEEE 1394 connector



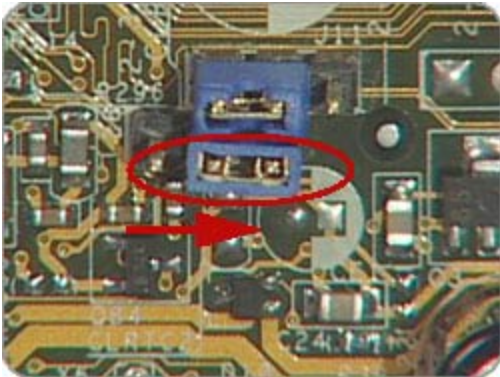
4. RJ-45 connector
5. Line in jack
6. Line out jack
7. Microphone jack
8. USB 2.0 connectors
9. USB 2.0 connectors
10. VGA connector
11. Serial connector
12. PS/2 Keyboard

Clearing the CMOS settings

The Clear RTC RAM (3-pin CLRRTC) jumper allows you to clear the Real Time Clock (RTC) RAM in CMOS. It also allows clearing of date, time, and system setup parameter memories in CMOS by erasing the RTC RAM data. The onboard button cell battery powers the RAM data in CMOS, including system setup information.

⚠ CAUTION: Do not change any jumper setting while the computer is on. Damage to the motherboard can result.

1. Turn off the PC and unplug the power cord.
2. Move the CLRRTC jumper cap from pins 1-2 (normal) to pins 2-3 (clear CMOS).



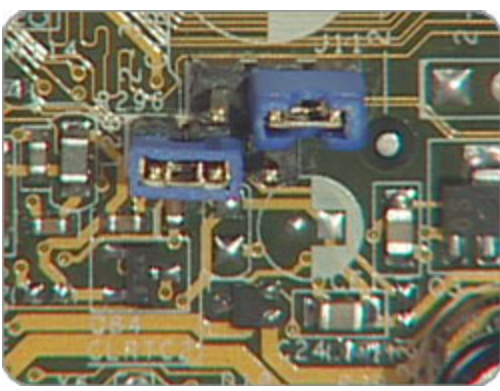
3. Keep the CLRRTC jumper cap on pins 2-3 for 5 to 10 seconds, then move it back to pins 1-2.
4. Plug in the power cord and turn on the PC.
5. Start the PC and press F1 to enter the **BIOS setup** and change BIOS settings.

Clearing the BIOS password

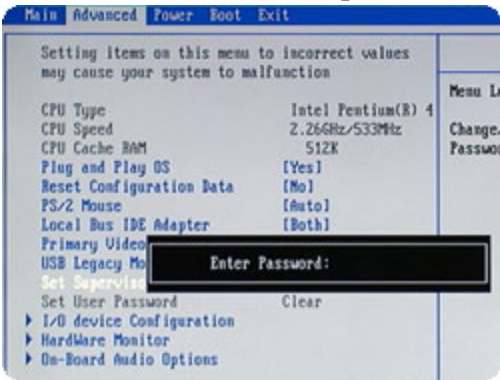
The BIOS password protects the BIOS from undesired changes (Escape password checking is disabled by default). If password checking is enabled, and you need to disable it, use the following steps:

1. Turn off the PC and unplug the power cord.
2. Move the J11 jumper cap from pins 1-2 to pins 2-3 to enter BIOS setup without a password.

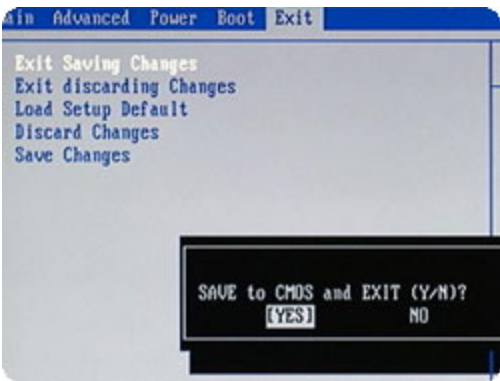




3. To enter BIOS setup, start the PC and press the F1 key as the PC starts.
4. Clear or reset the BIOS password.



5. Save the BIOS settings and turn off the PC.



6. If desired, reactivate BIOS password checking by returning the J11 jumper cap to pins 1-2.

Country/Region:  Estonia ^

Meiega tutvustus

Kuidas osta



HP partnerid

Püsi ühenduses

Toodete kokku kogumine | Toote taaskäitlemine | Hõlbustusvahendid | Privaatsus | Küpsised ja reklaami valikud |
Isikuandmete õigused | Kasutustingimused | Tarbijaõigusel põhinev tagatis

© Copyright 2022 HP Development Company, L.P.

