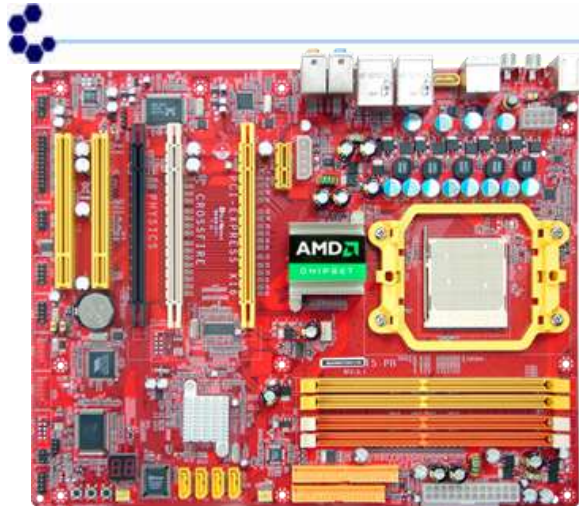




Mainboard Diagram



HA02-KE

- AMD™ 580X CrossFire Chipset and AMD™ SB600 Chipset
- Support Socket AM2 64-bit dual core AMD Athlon™64 X2 Processor
- Support HTT 1000MHz
- Dual Channel DDR2 800 Memory DIMMs Supported
- Support 4 Serial ATA Devices with RAID 0, 1, 5, 10
- Ready for Windows® Vista™
- Dual Gigabit LAN Supported
- HD 8-Channel Audio CODEC
- CPU Vcore 7-Shift
- ATX Form Factor



Features and Benefits

Socket AM2 64-bit AMD Athlon™ 64 Processor with HyperTransport™ Technology

AMD64, a revolutionary technology allowing the processor to run 32-bit applications at full speed while enabling a new generation of powerful 64-bit software applications. HyperTransport™ technology can increase overall system performance by removing I/O bottlenecks, increasing system bandwidth, and reducing system latency.

AMD™ 580X CrossFire Chipset: Backbone of the Performance Platform

AMD 580X CrossFire™ Platform Chipset is a defining milestone for the PC industry, as it is the only true, unrestricted 2x16 PCI Express® platform. Designed from the ground up for performance, this advanced CrossFire chipset pumps an unparalleled bandwidth of up to 8 GB/s to each GPU. The result is astonishing performance with brilliant and intense 3D graphics. This architecture increases bandwidth and dataflow and reduces the bottleneck that occurs in other pseudo x16 solutions.

AMD™ SB600 Southbridge Chipset

AMD SB600 Series offers advanced technologies and superior performance to any chipset platform solution for AMD desktop and mobile applications. With superior performance and broad-based connectivity, SB600 is rich in all the latest advanced features such as 10 USB 2.0 ports and audio. Designed for full data access for the fastest Windows Vista experience, it features new disk controller technologies that ensure fast file access while providing encryption for data security. AMD SB600 is designed with advanced power management for low power consumption and energy efficient platforms.

Pro Magic Plus System Recovery Software Embedded

Restore important data back right away, allowing your system to be operated under a safe environment. This amazing software not only provides convenient instant restoration, but also brings data back to the preferred state at any specific time point as you wish. Moreover, it combines several other functions such as anti-virus, backup software, uninstall software, multi-booting etc. to satisfy your needs of all sorts of system protections. No more worries on new virus or system failure!

CPU Vcore 7-Shift / Shift_to the scalabilities and flexibilities

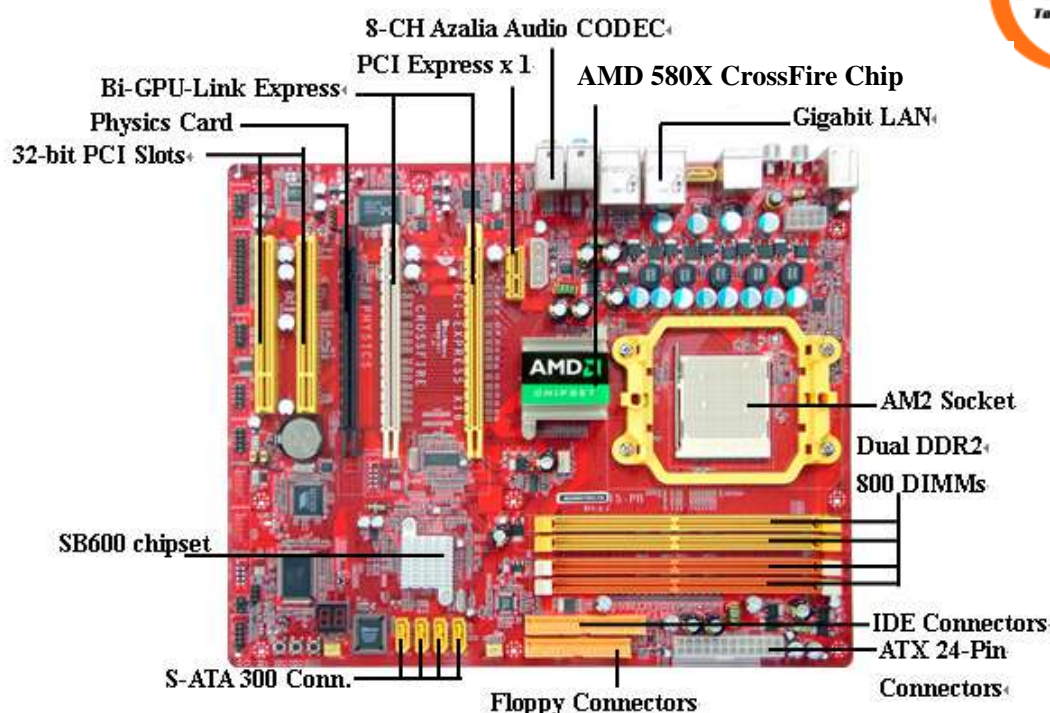
The adjustable voltage for CPU Vcore can be upgraded in seven stages for the precisely hardware dynamic over-clocking of demanding computing performance.

CPU Smart Fan / The Noise Restrained System

It's never been a good idea to sacrifice the sound effects for gaining the performance you need. CPU Smart Fan Noise Restrained System is the answer to all the noise restrained needed high performance computing system, the system will automatically increase the fan speed when CPU operating loading is high, after the CPU is in normal operating condition, the system will low down the fan speed for the silent operating environment. The system can provide the much longer life cycle for both CPU and the system fans for game use and business requirements..

Rear I / O





Mainboard Specifications

■ CPU	<ul style="list-style-type: none"> Socket AM2 HTT 1000 MHz AMD® Athlon™64 With HyperTransport Technology Compatible with 64-bit Dual Core AMD® Athlon™64 X2 Processor
■ Chipset	<ul style="list-style-type: none"> AMD™ 580X CrossFire Chipset + AMD™ SB600 Chipset
■ Memory	<ul style="list-style-type: none"> 4 * 240-pin DIMM Sockets for unbuffered Dual DDR2 800 SDRAM up to 8 GB
■ Expansion Slots	<ul style="list-style-type: none"> 2 * 32-bit PCI Slots / 1 * PCI EXPRESS x1 3 * PCI EXPRESS x16 (2 * PCI-EXPRESS x16 for CrossFire Technology)
■ Storage	<ul style="list-style-type: none"> 2 * Ultra DMA 133 / 100 / 66 IDE Devices Support Embedded AMD™ SB600 Southbridge Chipset Supports 4 Serial ATA2 HDDs with RAID 0, 1, 5, 10 Functions.
■ Audio	<ul style="list-style-type: none"> Realtek ALC883 8-Channel High Definition Audio CODEC
■ Ethernet LAN	<ul style="list-style-type: none"> Dual Realtek RT8111B-GR and RT8110SC PCI-E Gigabit LAN
■ USB	<ul style="list-style-type: none"> Embedded 10 * High Speed USB @ 480 Mbit / s
■ Special Features	<ul style="list-style-type: none"> Advanced Power Design that supports the latest Socket-AM2 K8 CPU "IMAGE IT!" System Backup Software and "ProMagicPLUS!" System Recovery System
■ Rear Panel I / O	<ul style="list-style-type: none"> 6 * High Speed USB Connectors @ 480 Mbit / s 1 * PS / 2 Mouse & 1 * PS/2 Keyboard 2 * RJ45 Over USB2.0 Connector 1 * SPDIF In/Out Port of 9-pin Block 1 * Audio I / O 1 * ESATA Connector
■ Internal I / O	<ul style="list-style-type: none"> 2 * High Speed USB Connectors @ 480 Mbit / s for 4 USB 2.0 Ports CPU / Chassis Fan Connectors 1 * 12V 8-pin ATX Power Connector and 1 * 24-pin ATX Power Connector 1 * Serial header of 9-pin Block 1 * Parallel header of 25-Pin Block CD / AUX Audio in 1 * Floppy Connector
■ BIOS	<ul style="list-style-type: none"> Award 4 MB Flash ROM
■ Form Factor	<ul style="list-style-type: none"> ATX Form Factor