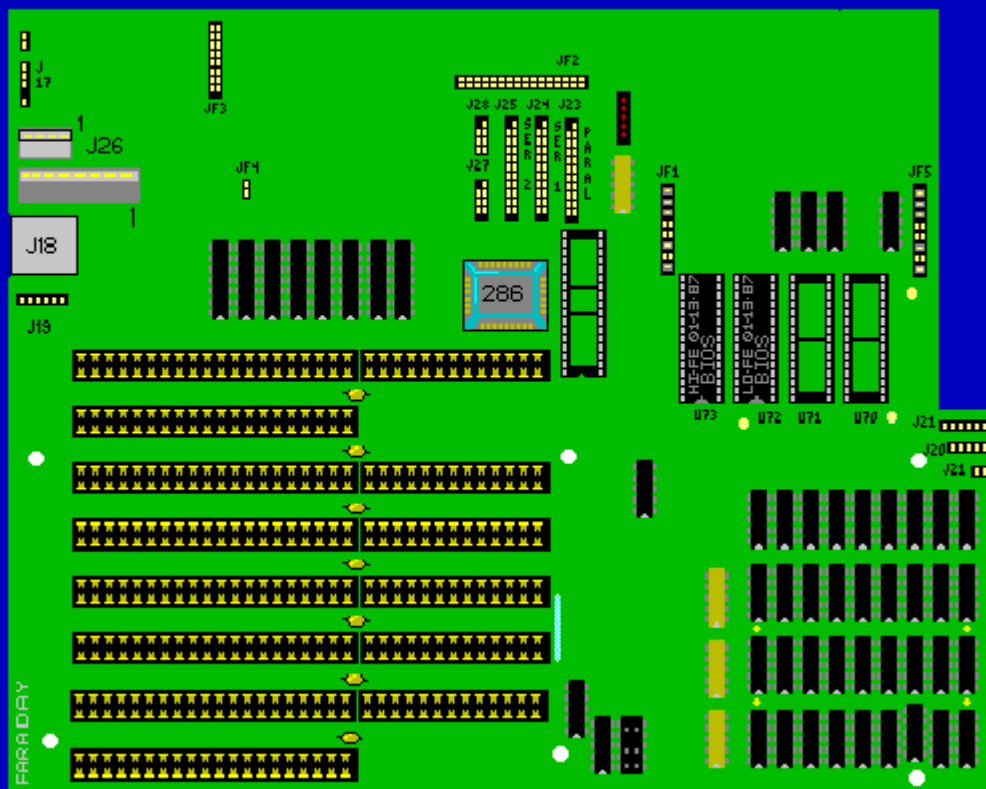


FARADAY



BY
TLG

FARADAY

Specifications

[Microprocessor](#)

[Memory](#)

[Drive Bays](#)

[Expansion Slots](#)

[Electrical](#)

[Diskette Support](#)

Microprocessor

Microprocessor	80286
Microprocessor speeds	6 MHz
Math coprocessor	80287
Math coprocessor speed	6 MHz
CMOS clock/calendar chip	146818

Memory

Installed RAM	1024 KB
RAM division options (Jumpers)	512 KB
	640 KB
	1024 KB

Drive Bays

Visible	2 half-height
Hidden	1 half-height,
	1 full-height

Expansion Slots

16-bit	6
8-bit	2

Electrical

Voltage (user-selectable) 110 V/220 V, 50/60 Hz

Power supply 190 W

Diskette Support

1.2-MB diskette-disk drive

1.2-MB, 360-KB diskette drives



[Copyright](#) 1997 Dell Computer Corporation. All rights reserved.
([Terms of Use](#))

Jumpers/Switches/Controls

[Display Jumpers](#)

[Keyboard Jumpers](#)

[Test Jumpers](#)

[Memory Jumpers](#)

[User EPROM Jumpers](#)

[User EPROM](#)

[BIOS EPROM Jumpers](#)

[Port Jumpers](#)

[Serial Transmitter Jumpers](#)

[Board Layout](#)

Display Jumpers

JF4-1 Out — monochrome adapter

 In — color graphics adapter

JF3-5 User defined*

JF3-6 User defined*

JF3-7 User defined*

* May be read by software.

Keyboard Jumpers

JF3-8 Out AT keyboard

 In PC keyboard

Test Jumpers

JF3-4 In Maintanance mode

 Out Normal mode

Memory Jumpers

JF1-1 In 512-KB or 640-KB on board RAM
Out 1024-KB on board RAM

User EPROM Jumpers

JF1-2 Out

JF1-3 In

JF1-4 Out (2716 USER EPROM (2 KB x8))

JF1-5 In

JF5-1 Out

JF5-2 In

JF1-2 In

JF1-3 Out

JF1-4 Out (2732 USER EPROM (4 KB x 8))

JF1-5 In

JF5-1 Out

JF5-2 In

JF1-2 In

JF1-3 Out

JF1-4 In (2764 USER EPROM (8 KB x 8))

JF1-5 Out or

JF5-1 Out (27128 USER EPROM (16 KB x8))

JF5-2 In

User EPROM

JF1-2 In
JF1-3 Out
JF1-4 In (27256 USER EPROM (32 KB x 8))
JF1-5 Out
JF5-1 In
JF5-2 Out

BIOS EPROM Jumpers

JF5-3 Out (27128 BIOS EPROM (16 KB x 8))

JF5-4 In

JF5-3 In (27256 BIOS EPROM (32 KB x 8))

JF5-4 Out

Port Jumpers

JF1-6 In Disable COM1

Out Enable COM1

JF1-7 In Disable COM2

Out Enable COM2

JF1-8 In Enable parallel port

Out Disable parallel port

Serial Transmitter Jumpers

JF2-1 In Enable COM1 RS422 transmitter

 Out Enable software control of transmitter

COM1 RS232 Receiver:

JF2-2 In

JF2-3 Out

COM1 RS422 Receiver:

JF2-2 Out

JF2-3 In

JF2-4 In COM1 RS422 terminator in

 Out COM1 RS422 terminator out

JF2-5 In Enable COM1 RS422 xmitter

 Out Enable software control of xmitter

JF2-6 In COM2 RS422 receiver

JF2-7 Out

JF2-6 Out COM2 RS232 receiver

JF2-7 In

JF2-8 In COM2 RS422 terminator in

 Out COM2 RS422 terminator out



Drive Type Table

For: Faraday 286 with BIOS revision A00

Type	Size (MB)	Cylinders	Heads	Sectors
1	10	306	4	17
2	20	615	4	17
3	31	615	6	17
4	62	940	8	17
5	47	940	6	17
6	20	615	4	17
7	31	462	8	17
8	30	733	5	17
9	112	900	15	17
10	20	820	3	17
11	35	855	5	17
12	50	855	7	17
13	20	306	8	17
14	43	733	7	17
15	0	0	0	0

[Copyright](#) 1997 Dell Computer Corporation. All rights Reserved
(Dell.com [Terms of Use](#))



[Copyright](#) 1997 Dell Computer Corporation. All rights reserved.
([Terms of Use](#))