

**Optimize
CPU-Core Loading**



Turbo Unlocker

On Demand Real-time System Tuning

Turbo Unlocker is the next evolution of an exclusive ASUS performance boost feature. All it takes is one click in the TurboV EVO interface and Turbo Unlocker automatically and dynamically adjusts each CPU core frequency to speed up performance based on actual system load. Turbo Unclocker gets you in touch with more performance exactly when you need it.

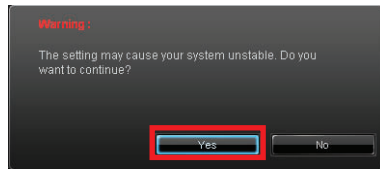
Turbo Unlocker instruction

Specially-designed for AMD® 6-core and Black Edition processors, the ASUS exclusive Turbo Unlocker allows dynamic and automatic CPU core adjustments based on system load. Follow the instructions below to enable Turbo Unlocker and unleash the full power of your system.

1. Install ASUS TurboV EVO from the support DVD that came with the motherboard package.
2. In the ASUS TurboV EVO window, click **More Settings**, and then click **CPU Ratio**.
3. Turbo Unlocker is set to OFF by default, allowing to you adjust the ratio of individual CPU core. Click **ON** to enable Turbo Unlocker.



4. Read through the warning message and click **Yes** to continue.



5. Turbo Unlocker is now enabled and will dynamically and automatically adjust CPU core ratios based on system load.



6. The Turbo Unlocker monitor on the bottom-right corner of the Windows desktop shows current CPU ratio in real-time. You can click Turbo Unlocker on the bottom of the monitor to enable or disable Turbo Unlocker at any time.

