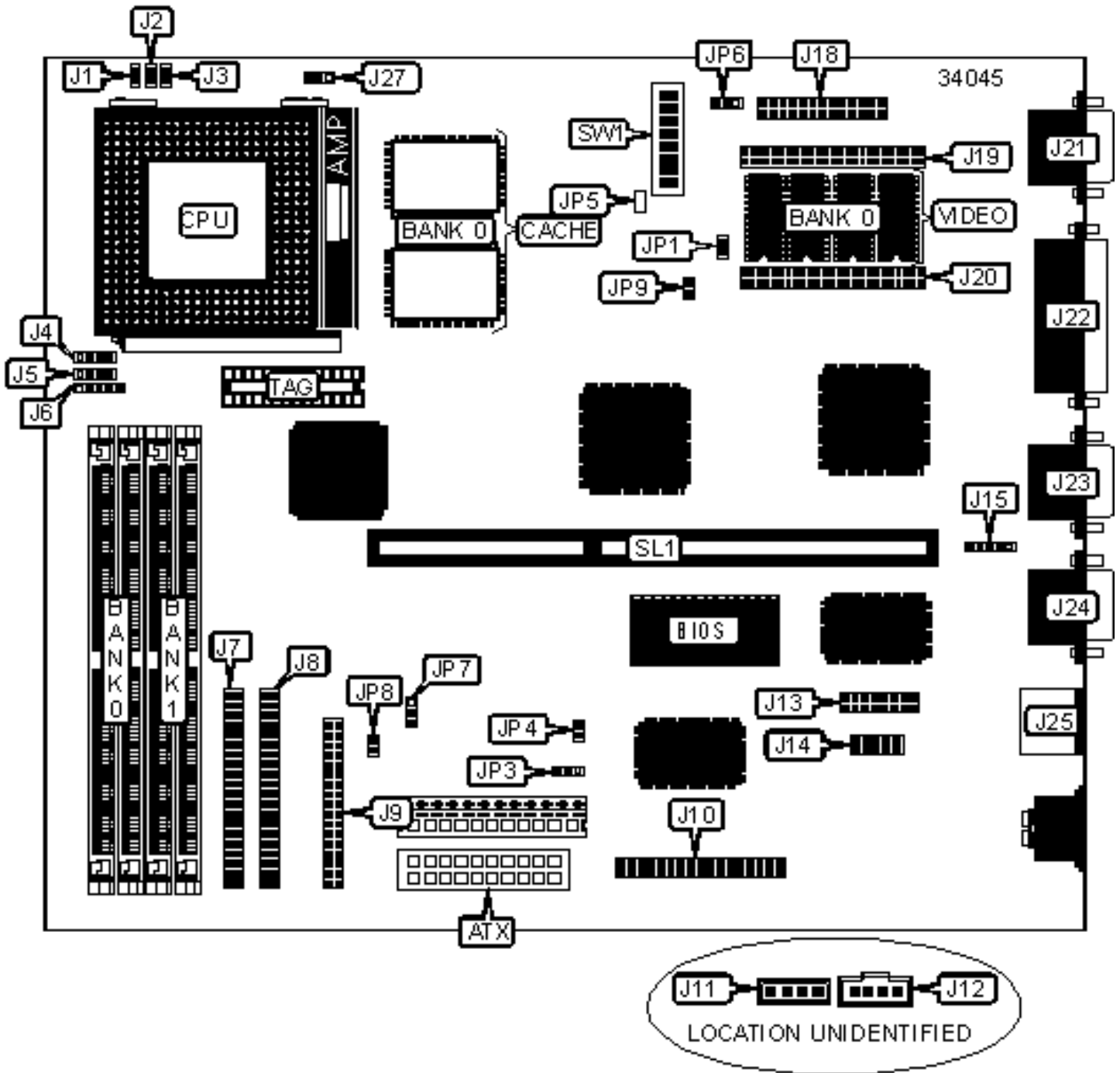


DTK COMPUTER, INC.

PAM-006I (VER. 1.10)

Configuration



CONNECTIONS

Purpose	Location	Purpose	Location
ATX power connector	ATX	Audio in CD-ROM (Mitsumi/Panasonic)	J12
Reset switch	J1	Audio extension connector	J13
Green PC connector	J2	Audio extension connector	J14
Green PC LED	J3	IR connector	J15
Speaker	J4	VGA feature connector	J18
IDE interface LED	J5	VGA port	J21
Power LED & keylock	J6	Parallel port	J22
IDE interface 1	J7	Serial port 1	J23
IDE interface 2	J8	Serial port 2	J24
Floppy drive interface	J9	PS/2 mouse port	J25
Wavetable interface	J10	Chassis fan power	J27
Audio in - CD-ROM (Sony)	J11	EISA extension slot	SL1

USER CONFIGURABLE SETTINGS

Function	Label	Position
On board video enabled	JP1	Closed
On board video disabled	JP1	Open
Flash BIOS voltage select 12v	JP3	Pins 1 & 2 closed
Flash BIOS voltage select 5v	JP3	Pins 2 & 3 closed
On board audio enabled	JP4	Closed
On board audio disabled	JP4	Open
» Factory configured - do not alter	JP5	Open
» Factory configured - do not alter	JP6	Pins 2 & 3 closed
» CMOS memory normal operation	JP7	Pins 1 & 2 closed

	CMOS memory clear	JP7	Pins 2 & 3 closed
»	Factory configured - do not alter	SW1/1	Off
»	Factory configured - do not alter	SW1/2	Off

SIMM CONFIGURATION		
Size	Bank 0	Bank 1
8MB	(2) 1M x 32	None
16MB	(2) 2M x 32	None
16MB	(2) 1M x 32	(2) 1M x 32
24MB	(2) 2M x 32	(2) 1M x 32
32MB	(2) 4M x 32	None
32MB	(2) 2M x 32	(2) 2M x 32
40MB	(2) 4M x 32	(2) 1M x 32
48MB	(2) 4M x 32	(2) 2M x 32
64MB	(2) 8M x 32	None
64MB	(2) 4M x 32	(2) 4M x 32
72MB	(2) 8M x 32	(2) 1M x 32
80MB	(2) 8M x 32	(2) 2M x 32

SIMM CONFIGURATION (CON'T)		
Size	Bank 0	Bank 1
96MB	(2) 8M x 32	(2) 4M x 32
128MB	(2) 8M x 32	(2) 8M x 32
128MB	(2) 16M x 32	None
136MB	(2) 16M x 32	(2) 1M x 32
144MB	(2) 16M x 32	(2) 2M x 32

160MB	(2) 16M x 32	(2) 4M x 32
192MB	(2) 16M x 32	(2) 8M x 32
256MB	(2) 16M x 32	(2) 16M x 32
Note: Board accepts EDO memory..		

CACHE CONFIGURATION		
Size	Bank 0	TAG
512KB	(2) 64K x 32	Unidentified

VIDEO MEMORY CONFIGURATION		
Size	Bank 0	J19/20
2MB	2MB	Not installed
4MB	2MB	2MB memory module installed

CPU SPEED SELECTION (CX 6X86L)								
CPU speed	Clock speed	Multiplier	SW1/3	SW1/4	SW1/5	SW1/6	SW1/7	SW1/8
150MHz	60MHz	2x	On	Off	Off	On	Off	Off
166MHz	66MHz	2x	On	Off	Off	Off	On	Off
200MHz	75MHz	2x	On	Off	Off	Off	Off	On

CPU SPEED SELECTION (CX 6X86MX)								
CPU speed	Clock speed	Multiplier	SW1/3	SW1/4	SW1/5	SW1/6	SW1/7	SW1/8
166MHz	60MHz	2.5x	On	Off	Off	On	Off	Off
200MHz	75MHz	2x	On	Off	Off	Off	Off	On

CPU SPEED SELECTION (AM K5)

CPU speed	Clock speed	Multiplier	SW1/3	SW1/4	SW1/5	SW1/6	SW1/7	SW1/8
120MHz	60MHz	2x	On	Off	Off	On	Off	Off
133MHz	66MHz	2x	On	Off	Off	Off	On	Off
166MHz	66MHz	2.5x	On	On	Off	Off	On	Off

CPU SPEED SELECTION (AM K6)

CPU speed	Clock speed	Multiplier	SW1/3	SW1/4	SW1/5	SW1/6	SW1/7	SW1/8
166MHz	66MHz	2.5x	On	On	Off	Off	On	Off
200MHz	66MHz	3x	Off	On	Off	Off	On	Off
233MHz	66MHz	3.5x	Off	Off	Off	Off	On	Off
266MHz	66MHz	4x	On	On	On	Off	On	Off

CPU SPEED SELECTION (INTEL)

CPU speed	Clock speed	Multiplier	SW1/3	SW1/4	SW1/5	SW1/6	SW1/7	SW1/8
90MHz	60MHz	1.5x	Off	Off	Off	On	Off	Off
100MHz	66MHz	1.5x	Off	Off	Off	Off	On	Off
120MHz	60MHz	2x	On	Off	Off	On	Off	Off
133MHz	66MHz	2x	On	Off	Off	Off	On	Off
166MHz	66MHz	2.5x	On	On	Off	Off	On	Off
200MHz	66MHz	3x	Off	On	Off	Off	On	Off
233MHz	66MHz	3.5x	Off	Off	Off	Off	On	Off

POWER SUPPLY SELECTION

Setting	JP8	JP9
AT	Closed	Open
ATX	Open	Closed

