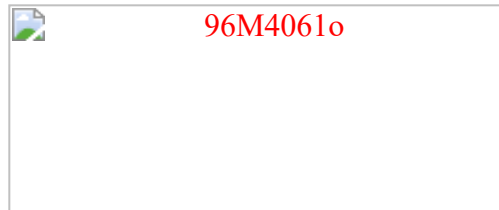


# SBC PCI / ISA

## with VGA, LAN, Gigabit LAN for Pentium 4

---



### 96M4061o

- ➔ [Technical Specifications](#)
- ➔ [Layout and Jumper Settings](#)
- ➔ [Datasheet as PDF-File](#)
- ➔ [BIOS and Flash programm](#)



### Technical Specifications

---

- **CPU**  
Intel Pentium 4 up to 2.8 GHz, Socket 478
- **Memory**  
2 DDR sockets for 32 - 1024 MB modules  
maximum memory 2 GB
- **Chipset**  
Intel 845G Chipset, 400/533 MHz system bus
- **BIOS**  
Award System BIOS in Flash ROM with VGA BIOS
- **Clock/Calendar**  
Realtime clock and calendar with battery backup
- **Bus Support**  
PICMG (16 bit ISA / 32 bit PCI),  
internal PCI for LAN, IDE, AGP for VGA
- **VGA**  
Intel 82845G (GMCH) AGP VGA with 64 MB shared memory
- **LAN Controller**  
Intel 82551QM single Ethernet controller,  
10 Base T / 100 Base TX support, full duplex, RJ45 port
- **Gigabit LAN Controller**  
Intel 82540EM single Ethernet controller,  
10 Base T / 100 Base TX / 1000 Base T support, full duplex, RJ45 port
- **IDE Controller**  
Supports 4 enhanced IDE drives,  
PIO Mode 4, Ultra DMA/33/66/100
- **FDD Controller**  
Supports 2 drives for  
360 KB / 720 KB / 1.44 MB / 1.2 MB / 2.88 MB
- **Serial Port**  
Two serial ports (RS232, 16C550 FIFO compatible)
- **Parallel Port**  
One Centronics compatible parallel port  
(SPP, ECP/EPP bidirectional)
- **Watch-Dog Timer**  
1 to 128-second timeout interval
- **USB Port (2x)**
- **Keyboard / Mouse Connector**  
5-pin internal connector,  
6-pin external Mini-DIN connector (PS/2)  
for keyboard and mouse per Y-Cabel
- **ISA MAX**  
Maximize ISA signals to support ISA cards up to 20

- **System control**  
Voltage control for the values Vcore, Vcc5V, +1.5V, +3.3V, +5V, -5V, +12V, -12V  
1 x cooler turn around, 2 x temperature sensor
- **Standards**  
PICMG 2.0 (PCI / ISA), PCI 2.2
- **Power Management**  
Software controlled by BIOS
- **Power Supply**  
+5V / 12A (max.)  
+12V / 12A (max.)  
-12V / 500mA (max.)
- **Dimensions**  
Card full-length, 338 x 122 mm
- **Environment**  
Storage Temperatures: -20° ~ 80°C  
Operating Temperatures: 0° ~ 55°C (cooler fan required for CPU)  
Relative Humidity: 10% ~ 90%, non-condensing

[Back](#)[Print](#)

Copyright © 2001 DSM Computer AG