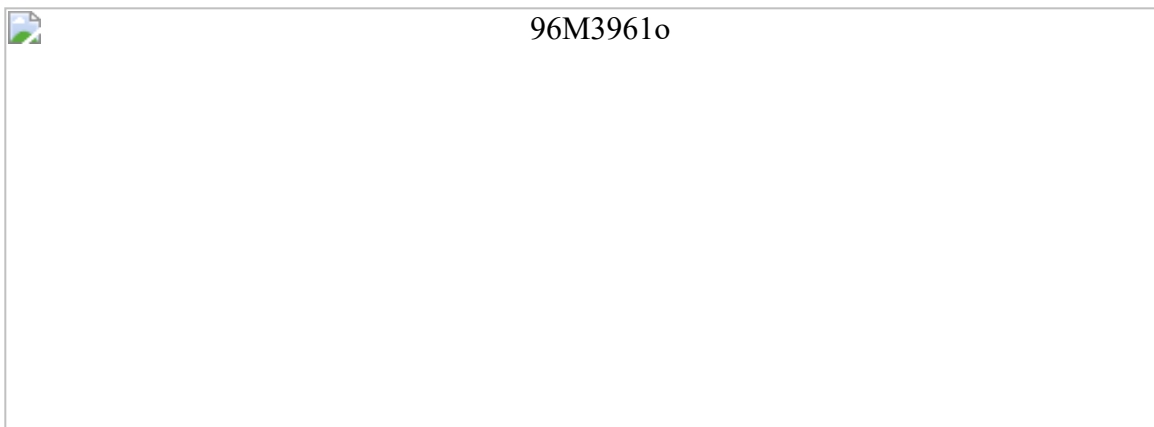


96M3961o

Layout und Jumperbelegung



VCORE Voltage								SW1-1	SW1-2	SW1-3	SW1-4	SW1-5	
1.9V (P-266/P-166)								ON	ON	ON	OFF	OFF	
2.2V (K6-266/300/333)								OFF	OFF	OFF	ON	OFF	
2.8V (P55C)								OFF	ON	OFF	OFF	OFF	
2.9V (K6-166/200)								OFF	ON	OFF	OFF	ON	
3.2V (K6-233)								OFF	ON	ON	OFF	OFF	
3.3V (P54C)								OFF	ON	ON	OFF	ON	
3.5V (WINCHIP)								OFF	ON	ON	ON	ON	
Sensor SMI											SW1-6		
Enable											ON		
Disable											OFF		
für Intel Prozessoren	SW2-1	SW2-2	SW2-3	SW2-4	SW2-5	SW2-6	SW2-7	SW2-8					
1.5x	ON	OFF	ON	OFF	-	-	-	-					
2.0x	OFF	ON	ON	OFF	OFF	ON	-	-					
2.5x	OFF	ON	OFF	ON	OFF	ON	-	-					
3.0x	ON	OFF	OFF	ON	OFF	ON	-	-					
3.5x	ON	OFF	ON	OFF	OFF	ON	-	-					
4.0x	OFF	ON	OFF	ON	ON	OFF	-	-					
für AMD Prozessoren	SW2-1	SW2-2	SW2-3	SW2-4	SW2-5	SW2-6	SW2-7	SW2-8					
2.0x	OFF	ON	ON	OFF	-	-	ON	OFF					
2.5x	OFF	ON	OFF	ON	-	-	ON	OFF					
3.0x	ON	OFF	OFF	ON	-	-	ON	OFF					
3.5x	ON	OFF	ON	OFF	-	-	ON	OFF					
4.0x	OFF	ON	ON	OFF	-	-	OFF	ON					
4.5x	OFF	ON	OFF	ON	-	-	OFF	ON					
5.0x	ON	OFF	OFF	ON	-	-	OFF	ON					
5.5x	ON	OFF	ON	OFF	-	-	OFF	ON					
VCC3 Voltage											SW3-1	SW3-2	
3.3V											ON	OFF	
3.45V											OFF	ON	
CPUVIO Voltage								SW3-3	SW3-4	SW3-5	SW3-6	SW4-4	SW4-5
2.5V								ON	OFF	OFF	ON	OFF	ON

3.3V	OFF	ON	OFF	OFF	ON	OFF
3.45V	OFF	OFF	ON	OFF	ON	OFF
CPU CLK	PCI CLK			SW4-1	SW4-2	SW4-3
50.0 MHz	25.00 MHz			ON	ON	ON
60.0 MHz	30.00 MHz			OFF	OFF	ON
66.8 MHz	33.40 MHz			OFF	OFF	OFF
68.5 MHz	34.25 MHz			ON	OFF	OFF
75.0 MHz	32.00 MHz			ON	ON	OFF
75.0 MHz	37.50 MHz			OFF	ON	OFF
83.3 MHz	33.30 MHz			OFF	ON	ON
83.3 MHz	41.65 MHz			ON	OFF	ON
SDRAM Refresh Rate						SW4-6
66 MHz						ON
60 MHz						OFF
About Panel			SW5-1	SW5-2	SW5-3	SW5-4
Default			OFF	ON	-	-
Reserved			ON	OFF	-	-
Panel Typ			SW5-5	SW5-6	SW5-7	SW5-8
1024x768 Dual Scan STN Color			ON	ON	ON	ON
1280x1024 TFT Color			OFF	ON	ON	ON
640x480 Dual Scan STN Color			ON	OFF	ON	ON
800x600 Dual Scan STN Color			OFF	OFF	ON	ON
640x480 Sharp TFT Color			ON	ON	OFF	ON
640x480 18-Bit TFT Color			OFF	ON	OFF	ON
1024x768 TFT Color			ON	OFF	OFF	ON
800x600 TFT Color			OFF	OFF	OFF	ON
800x600 TFT Color (Large BIOS only)			ON	ON	ON	OFF
800x600 TFT Color (Large BIOS only)			OFF	ON	ON	OFF
800x600 Dual Scan STN Color (Large BIOS only)			ON	OFF	ON	OFF
800x600 Dual Scan STN Color (Large BIOS only)			OFF	OFF	ON	OFF
1024x768 TFT Color (Large BIOS only)			ON	ON	OFF	OFF
1280x1024 Dual Scan STN Color (Large BIOS only)			OFF	ON	OFF	OFF
1024x600 Dual Scan STN Color (Large BIOS only)			ON	OFF	OFF	OFF
1024x600 TFT Color (Large BIOS only)			OFF	OFF	OFF	OFF
M-System Adresse				SW6-1	SW6-2	SW6-3
Disable				OFF	-	-
C0000				ON	ON	ON
C8000				ON	ON	OFF
D0000				ON	OFF	ON
D8000				ON	OFF	OFF
BIOS Refresh						SW6-4
Enable						ON
Disable						OFF
CMOS RAM						SW6-7
Löschen						ON
Normal						OFF

ATX Power	SW6-8	JP9
Disable	ON	offen
Enable	OFF	1-2
Panel Voltage		JP2
3.3V		2-3
5V		1-2

[Zurück](#)