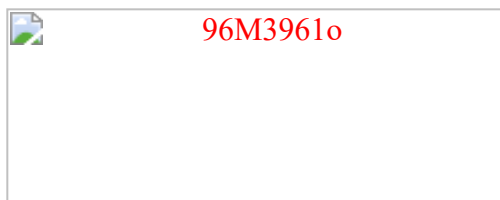


SBC 586 PCI / ISA with VGA/LCD



96M3961o

- ➔ [Technical Specifications](#)
- ➔ [Layout and Jumper Settings](#)
- ➔ [User's Manual as PDF-File](#)
- ➔ [BIOS and Flash programm](#)



Technical Specifications

- **CPU**
Intel Pentium up to 233 MHz (P54C and P55C/MMX),
AMD K6-2 up to 400 MHz
- **Memory**
2 DIMM sockets for 32 - 128 MB SDRAM modules
maximum memory 256 MB
- **Cache**
512 KB Pipeline Burst cache
- **Chipset**
Intel 82430TX Chipset
- **BIOS**
Award System BIOS in Flash ROM with VGA BIOS
- **Clock/Calendar**
Realtime clock and calendar with battery backup
- **Bus Support**
PICMG (16 bit ISA / 32 bit PCI), internal PCI for VGA, IDE
- **VGA**
Chips 69000 AGP VGA/LCD with 2 MB
max. resolution/color/refresh rate
800x600, true color, 85Hz
1024x768, 64K, 85Hz
1280x1024, 256, 60 Hz
VGA driver for Windows95 / 98 / NT4.0/5.0
- **Supported TFT Displays**
[Sharp 10.4" TFT Display \(96M9820\)](#)
[Sharp 12.1" TFT Display \(96M9830\)](#)
[Sharp 15.0" TFT Display \(96M9840\)](#)
- **IDE Controller**
For 4 Enhanced IDE drives,
PIO Mode 4, DMA Mode 2 and Ultra DMA/33, can be switched off
- **FDD Controller**
Up to 2 drives for
360 KB / 720 KB / 1.44 MB / 1.2 MB / 2.88 MB / LS-120, can be switched off
- **DiskOnChip Socket**
From 2 to 288 MB single-chip
- **Serial Port**
Two serial ports (RS232, 16C550 FIFO compatible)
can be switched off individually
- **Parallel Port**
One centronics compatible parallel port
(SPP, ECP/EPP bidirectional), can be switched off
- **Watch-Dog Timer**
1 to 64-second timeout interval,

NMI or RESET, can be switched off

- **USB Port (2x)**
6-pin internal connector
- **IrDA Port**
5-pin internal IRCON connector
- **Keyboard Connector**
5-pin internal connector and 6-pin external Mini-DIN connector (PS/2)
- **Mouse**
6-pin external Mini-DIN connector (PS/2)
- **Standards**
PICMG 2.0 (PCI / ISA), PCI 2.1
- **ISA MAX**
Maximize ISA signals to support ISA cards up to 20
- **Power Management**
Software controlled by BIOS
- **Power Supply**
+5V / 10A (max.)
±12V / 50mA
- **Dimensions**
Card full-length, 338 x 122 mm
- **Environment**
Storage Temperatures: -20° ~ 80°C
Operating Temperatures: 0° ~ 55°C (cooler fan required for CPU)
Relative Humidity: 10% ~ 90%, non-condensing



Back



Print

Copyright © 2001 DSM Computer AG