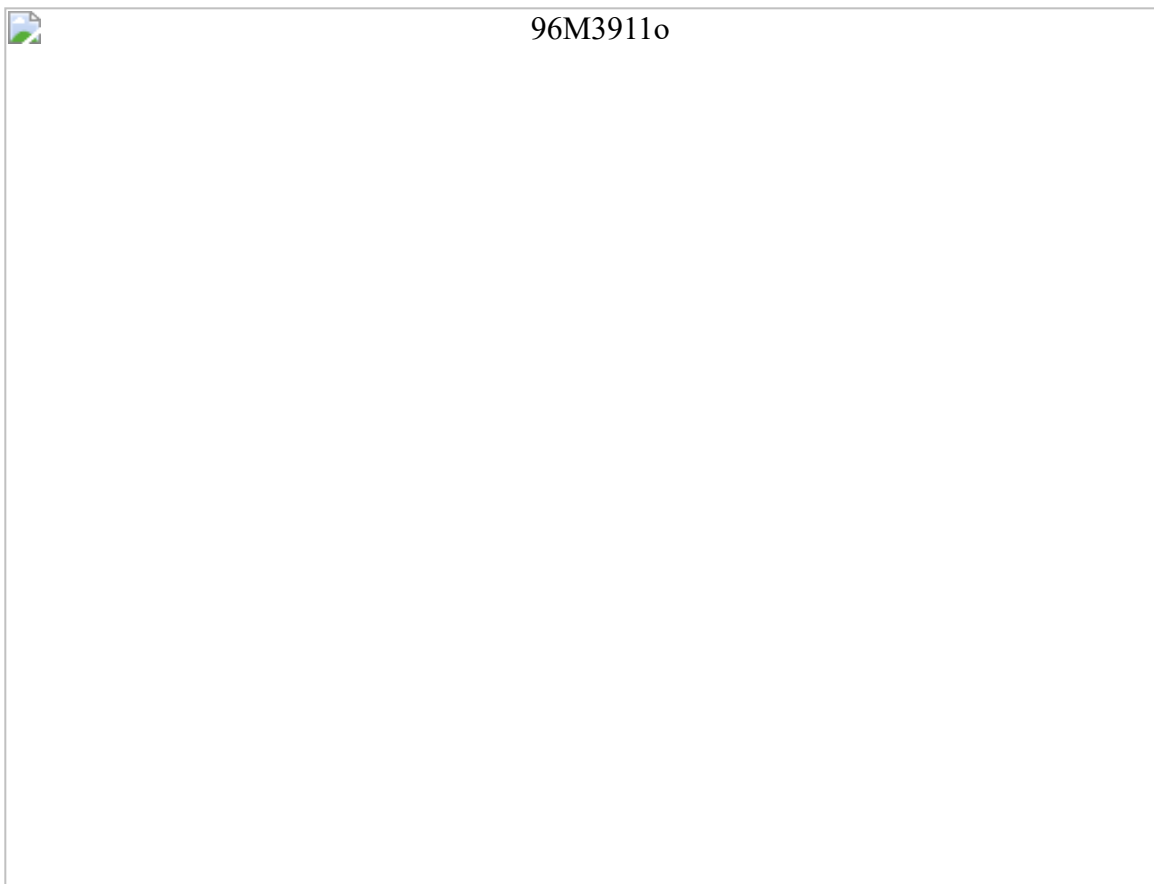


96M3911o

Layout und Jumperbelegung



VGA Control	JP1	JP2	JP29
Enable	1-2	2-3	1-2
Disable	2-3	1-2	2-3
CPU Typ	JP3	JP4	JP30
P54C (3.3V)	offen	offen	offen
P55C (2.8V)	1-2	1-2	1-2
K6-233/266/300 (2.2V)	1-2	1-2	offen
Core/Bus Ratio	JP5	JP6	JP8
x1.5	1-2	1-2	2-3
x2	2-3	1-2	2-3
x2.5	2-3	2-3	2-3
x3	1-2	2-3	2-3
x3.5	1-2	1-2	1-2 (K6) 2-3 (P55)
x4	2-3	1-2	2-3
x4.5	2-3	2-3	2-3
PS/2 Maus	JP7	JP24	
Disable		2-3	1-2
Enable		1-2	offen
L1 Cache			JP11
W/T			1-2

W/B						offen
Pipeline						JP12
Enable						1-2
Disable						offen
CPU-Typ für Cache						JP15
Cyrix						1-2
Intel/AMD						offen
Cache RAM						JP17
256KB						offen
512KB						1-2
RS232/422/485	JP9	JP14	JP18	JP20	JP26	
RS232	1-2	1-2	1-2	1-2	1-2	
RS422	3-4	2-3	2-3	2-3	2-3	
RS485	5-6	2-3	2-3	2-3	2-3	
Multi I/O						JP21
Disable						1-2
Enable						offen
CPU Frequenz					JP19	JP22
50MHz					1-2	1-2
60MHz					offen	1-2
66MHz					1-2	offen
CMOS RAM						JP21
Normal						offen
Löschen						1-2
M-Systems Adresse						JP25
C0000						1-2
C8000						3-4
D0000						5-6
D8000						7-8
BIOS Typ						JP27
Eprom						offen
Flash						1-2
Lüfter Kontrolle						JP28
Disable						offen
Enable						1-2

